

---

# FLIGHT PLAN & SITE SURVEY

---

C 230-4242 PENTICTON MODEL AVIATION CLUB- KEOGAN  
SPORTS FIELD PENMAC

May 22, 2026



**IMPORTANT NOTICE**

Please ensure you have received all required authorizations prior to flight. This Site Survey was created using RPAS Wilco. The user accepts all responsibility for the accuracy of the information.

Terms & Conditions: [rpaswilco.com/#tnc](https://rpaswilco.com/#tnc)

# Mission Information

C 230-4242 PENTICTON MODEL AVIATION CLUB- KEOGAN SPORTS FIELD PENMAC

## FLIGHT DETAILS

Reference No:	<b>MAAC-230-4242</b>
Project Name:	<b>PENTICTON MODEL AVIATION CLUB</b>
Pilot Name:	<b>MAAC</b>
Pilot Certificate:	
Mission Type:	<b>VLOS</b>
Flight Start:	<b>May 22, 2026 07:32 PM</b>
Flight End:	<b>May 22, 2026 08:32 PM</b>

## LOCATION DETAILS

Flight Address:	<b>KEOGAN SPORTS FIELD PENMAC</b>
Latitude:	<b>49° 20' 10.60" N ( 49.336 )</b>
Longitude:	<b>119° 34' 31.71" W ( -119.575 )</b>
Field Elevation:	<b>1099 ft MSL</b>
Altitude / Radius:	<b>400 ft / 926 m ( 0.5 nm )</b>
Classification:	<b>UNCONTROLLED</b>
FIR / Contact:	<b>CZVR / 604-586-4500</b>

## REPORT CONTENTS

Site Survey • Obstacles (if available) • Nearby Aerodromes • Canadian Aviation Regulations • GFA • Aerodrome Supplements • METAR & TAF • NOTAMs • CFS





# Flight Map & MODEL Details

MISSION LOCATION SURVEY

## FLIGHT AREA MAP



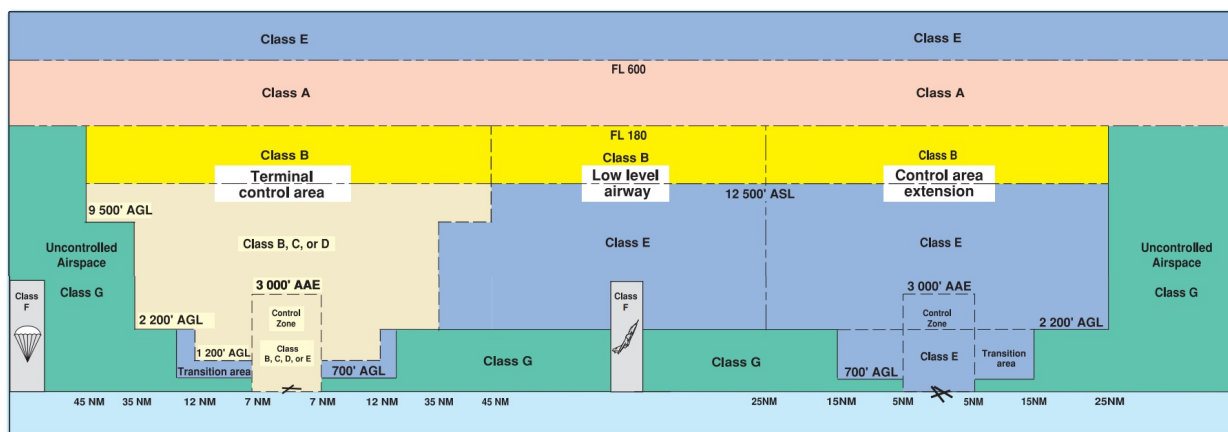
## MISSION LOCATION DETAILS

ROLE	LATITUDE	LONGITUDE
 MODEL	49° 20' 10.60" N 49.336	119° 34' 31.71" W -119.575
 Pilot		
 Payload Op.		
 Observer		

# Airspace Classification

MISSION LOCATION SURVEY

## AIRSPACE MAP



## OVERLYING AIRSPACES

Class	Name	Floor	Ceiling
E	3.1.2-47 [CAE]	8000AGL	18000MSL
E	3.1.2-48 [CAE]	9000AGL	18000MSL
E	T703 Fixed RNAV Route	2200AGL	18000MSL
E	Penticton, BC [CAE]	2200AGL	18000MSL
E	T800 Fixed RNAV Route	2200AGL	18000MSL
E	Kelowna/Penticton, BC [TA]	700AGL	18000MSL
E	Kelowna/Penticton, BC [TSP]	6500MSL	12500MSL
E	T701-2 Fixed RNAV Route	2200AGL	18000MSL
E	Penticton, BC [CZ]	SFC	3000GND
E	T261 Fixed RNAV Route	2200AGL	18000MSL
F	CYA120 (A) PENTICTON, BC	SFC	4000MSL
F	CYA117 (H) OLIVER, BC	SFC	5000MSL
F	CYR 6.1.0-9 OKANAGAN CORRECTIONAL CENTRE, BC	SFC	2100MSL
F	CYR115 WHITE LAKE, BC (Near Penticton)	SFC	2700MSL

## NEAREST AERODROMES & DISTANCE FROM OPERATION

PENTICTON (CYYF - AERODROME - Cert)	Lat: 49.463	Long: -119.602	14.168KM	7.65NM	N
OLIVER (CAU3 - AERODROME - Reg)	Lat: 49.173	Long: -119.551	18.205KM	9.83NM	S
PENTICTON REGIONAL HOSPITAL (CPH6 - HELIPORT - Cert)	Lat: 49.482	Long: -119.576	16.167KM	8.729NM	N

## BRITISH COLUMBIA

## AERODROME / FACILITY DIRECTORY

## PENTICTON BC

CYFF

<b>REF</b>	N49 27 45 W119 36 08 1.8SW 16°E (2015) UTC-8(7) Elev 1130' A5004 A5005 LO2 HI3 CAP RCAP	
<b>OPR</b>	TC APM 250-809-4596 Admin 250-770-4422 1600-0030Z† Mon-Fri exc hols H24 Cert	
<b>PF</b>	A-2,3,6,7,8 B-5 C-4	
<b>CUST</b>	AOE/30 (120 with staged off-loading) CANPASS 1-888-226-7277 1630-0030Z† Mon-Fri	
<b>FLT PLN</b>	<p><b>FIC</b> Kamloops 866-WXBRIEF (Toll free within Canada) or 866-541-4101 (Toll free within Canada &amp; USA)</p> <p><b>WX</b> METAR H24. TAF H24, issue times: 01, 07, 13, 19Z.</p>	
<b>SERVICES</b>	<p><b>FUEL</b> 100LL, JA-1 14-05Z† Mon-Fri 15-04Z† Sat-Sun</p> <p><b>OIL</b> 80, 100, 120, 15W50</p> <p><b>S</b> 1,2</p> <p><b>JASU</b> CE15 Executive Aviation 250-715-5345</p> <p><b>MILCON</b> Executive Flight Centre Fuel 250-493-5323</p>	
<b>RWY DATA</b>	Rwy 16(165°)/34(345°) 6000x149 ASPH Thld 34 displ 300'.	
<b>RWY CERT</b>	Rwy 16/34 AGN IIIB	
<b>APRON</b>	GA prkg on apron N of tml only. Park on N and NE edges. Non-wheeled heli prkg avbl on grass N of main apron. Itinerant pilot and pax access via Gate 88. Lgt acft prkg avbl off Twy A, S end. PPR required for all prkg - request via <a href="http://yyf.vortexcms.com/ppr">yyf.vortexcms.com/ppr</a> . Prkg fees. Wildfire Heli Ops: Staging and extended prkg on grass N of tml and maint fac, and S of Air Tanker Base along W fence. Apron II: Pvt	
<b>RCR</b>	Opr Ltd win maint 15-01Z† Mon-Fri, 17Z† & 23Z† Sat-Sun & hols Nov 1-Mar 31, O/T 2 hr PN call out chg may be levied. CRFI, PCN	
<b>LIGHTING</b>	16-AO(TE ME) P2, 34-AS(TE ME) P2 PAPI limitation/restriction. PAPI Rwy 34 to be used only within 2NM of thld. ARCAL-118.5 type K avbl when FSS clsd.	
<b>COMM</b>	<p><b>RADIO</b> 118.5 PTC avbl (V) (emerg only 250-492-3001)</p> <p><b>GND ADV</b> 121.9 (emerg only 250-492-3001)</p> <p><b>MF</b> rdo 118.5 5NM 4100 ASL (CAR 602.98)</p>	
<b>NAV</b>	<p><b>DME</b> IYF 110.3 Ch 40 N49 27 09 W119 36 14 (1134')</p> <p><b>LOC</b> IYF 110.3 (Rwy 16)</p>	

## BRITISH COLUMBIA

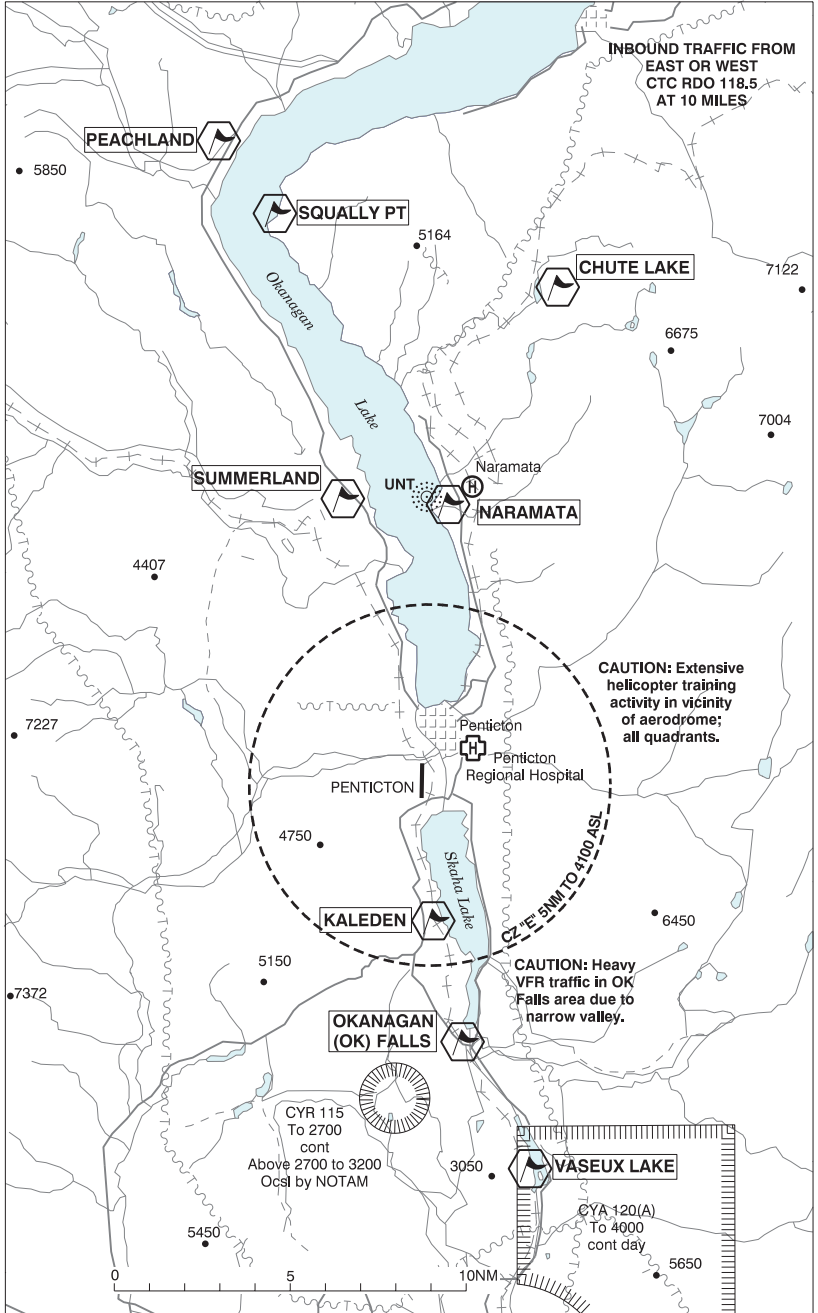
## AERODROME / FACILITY DIRECTORY

## PENTICTON BC (Cont'd)

CYYF

<b>PRO</b>	<p>Inbd tfc see VTPC; for night circuit pro see Night Circuit VTPC. Circuit hgt 2300 ASL. Rgt hand circuits Rwy 34 (CAR 602.96). Heli tng all quadrants, circuits E &amp; W of A/D at 2300 ASL.</p> <p><b>GROUND ADVISORY:</b> The Minister has authorized specific operating restrictions regarding communications intended for the MF, as well as the introduction of a Ground Advisory frequency (GND ADV) pursuant to CARs 602.97(2), 602.98(1) and 602.99.</p> <p><b>Departure procedure:</b> Prior to taxi for departure; contact GND ADV on 121.9 for clearance and initial advisory information. After receiving initial advisory information, GND ADV will initiate communication transfer to RADIO on 118.5 prior to entering the runway/departure surface. Pilots are required to ascertain that there is no likelihood of collision with another aircraft or a vehicle prior to departure as stated in CAR 602.96 2a) and b).</p> <p><b>Arrival procedure:</b> After exiting the runway/arrival surface and reporting clear on the radio frequency, pilots will be directed to contact GND ADV on 121.9 for ground traffic and taxiing information before entering the taxiway.</p>
<b>CAUTION</b>	<p>Only pilots familiar with local terrain should use this aprt dur hrs of darkness. Ngt ops not recommended unless all 7 hazard beacons oprg. Extv heli activity at A/D dur daylight hrs all quads. Due to high terrain, it is recommended pilots proceeding E or W under VFR, attain an alt of 5,000' (ASL) min before leaving the Okanagan Valley. Hi terrain reduces operational length of Rwy 34 PAPI. Extv bird activity in vic.</p>

**PENTICTON VFR TERMINAL PROCEDURES CHART**



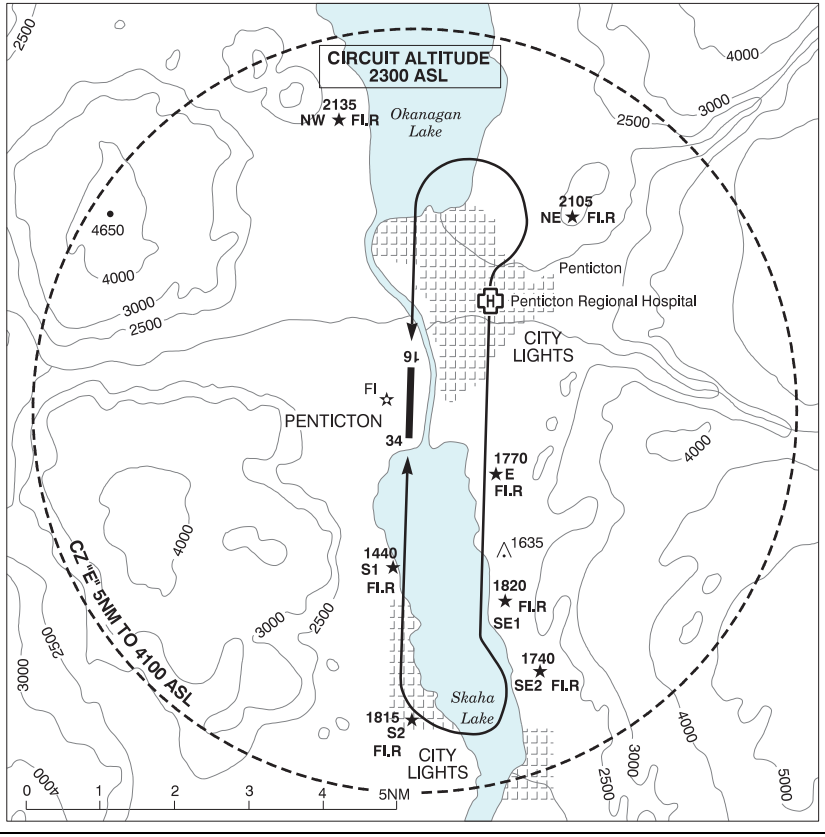
## BRITISH COLUMBIA

AERODROME / FACILITY DIRECTORY

**PENTICTON VFR TERMINAL PROCEDURES CHART (Cont'd)**

<b>NAME</b>	<b>IDENT</b>	<b>LAT/LONG</b>
KALEDEN	VCKLE	N49° 24' 00" W119° 36' 00"
NARAMATA	VCNAR	N49° 35' 50" W119° 36' 11"
OKANAGAN (OK) FALLS	VCOKN	N49° 20' 33" W119° 34' 08"
PEACHLAND	VCPCH	N49° 46' 00" W119° 43' 59"
SQUALLY PT	VCSQL	N49° 44' 00" W119° 43' 01"
SUMMERLAND	VCSML	N49° 36' 00" W119° 40' 01"
VASEUX LAKE	VCVAS	N49° 17' 00" W119° 31' 59"
CHUTE LAKE	VCCHL	N49° 41' 38" W119° 31' 52"

**PENTICTON VFR TERMINAL PROCEDURES CHART - NIGHT CIRCUIT PROCEDURE**



## BRITISH COLUMBIA

## AERODROME / FACILITY DIRECTORY

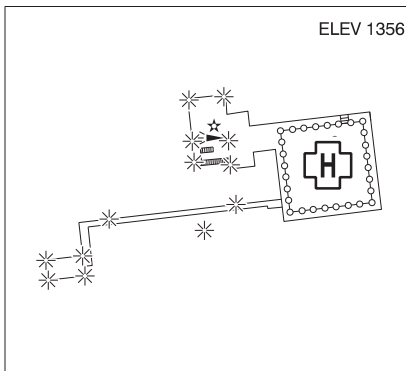
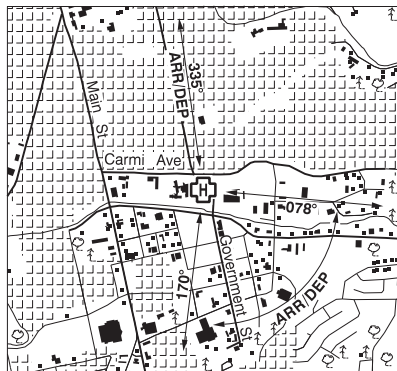
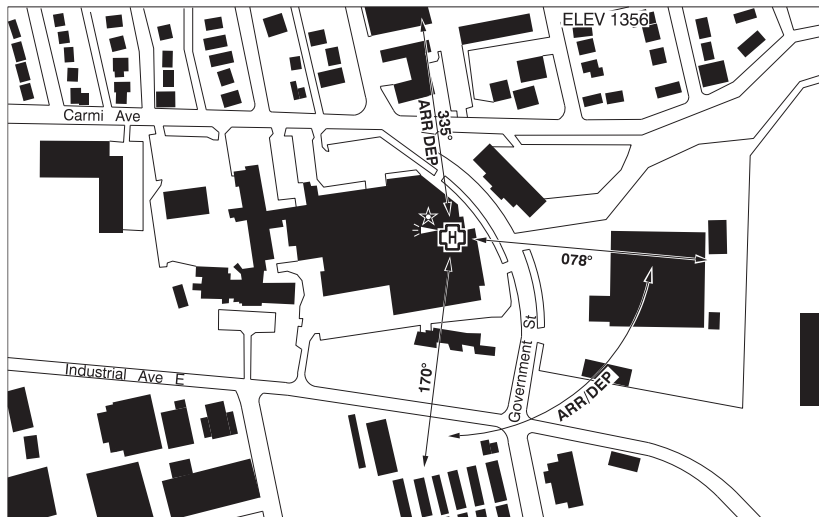
## OLIVER BC

CAU3

<b>REF</b>	N49 10 24 W119 33 04 Adj S 16°E (2015) UTC-8(7) Elev 1015' A5005 LO2	
<b>OPR</b>	Town 250-485-6200 APM 250-535-0395 Reg	
<b>PF</b>	A-1 B-2,5 C-3,4,6	
<b>FLT PLN</b>	<b>FIG</b> Kamloops 866-WXBRIEF (Toll free within Canada) or 866-541-4101 (Toll free within Canada & USA) <b>WX</b> WxCam	
<b>SERVICES</b>	<b>FUEL</b> 100LL (APM), JA-1 (FSII avbl) Aurora Helicopters Ltd. 866-743-5588. Full/Self-serve, Visa/Mastercard. <b>OIL</b> All <b>S</b> 2,4,5	
<b>RWY DATA</b>	Rwy 01/19 3355x50 asphalt Thld 01 displ 744' Rwy 19 up 0.75% first 1600'	
<b>RCR</b>	APM 17-01Z† Ltd win maint	
<b>LIGHTING</b>	01-(TE LO) AP 4°, 19-(TE LO) APAPI limitation/restriction. APAPI Rwy 01 to be used only within 3NM of thld ARCAL-122.8 type J.	
<b>COMM</b>	<b>RCO</b> Pacific rdo 125.85 (FISE) 126.7 (bcst) <b>ATF</b> UNICOM 122.8 2NM 2500 ASL	
<b>PRO</b>	Rgt hand circuits Rwy 01 (CAR 602.96).	
<b>CAUTION</b>	Only pilots familiar with lcl terrain should use this A/D at ngt. A/D lctd in narrow mtn valley with unlgtd high terrain E & W of aprt. Migratory bird act in vic of A/D. Due to high terrain, it is recommended pilots proceeding E or W under VFR, attain an alt of 5,000' (ASL) min before leaving the Okanagan Valley. Hi terrain reduces operational length of Rwy 01 APAPI. Grass tkof/lgd area 2000' x 40' adj E Rwy 01/19 no win maint, use at own risk. Extv glider ops within 3NM on wknds Apr-Oct.	

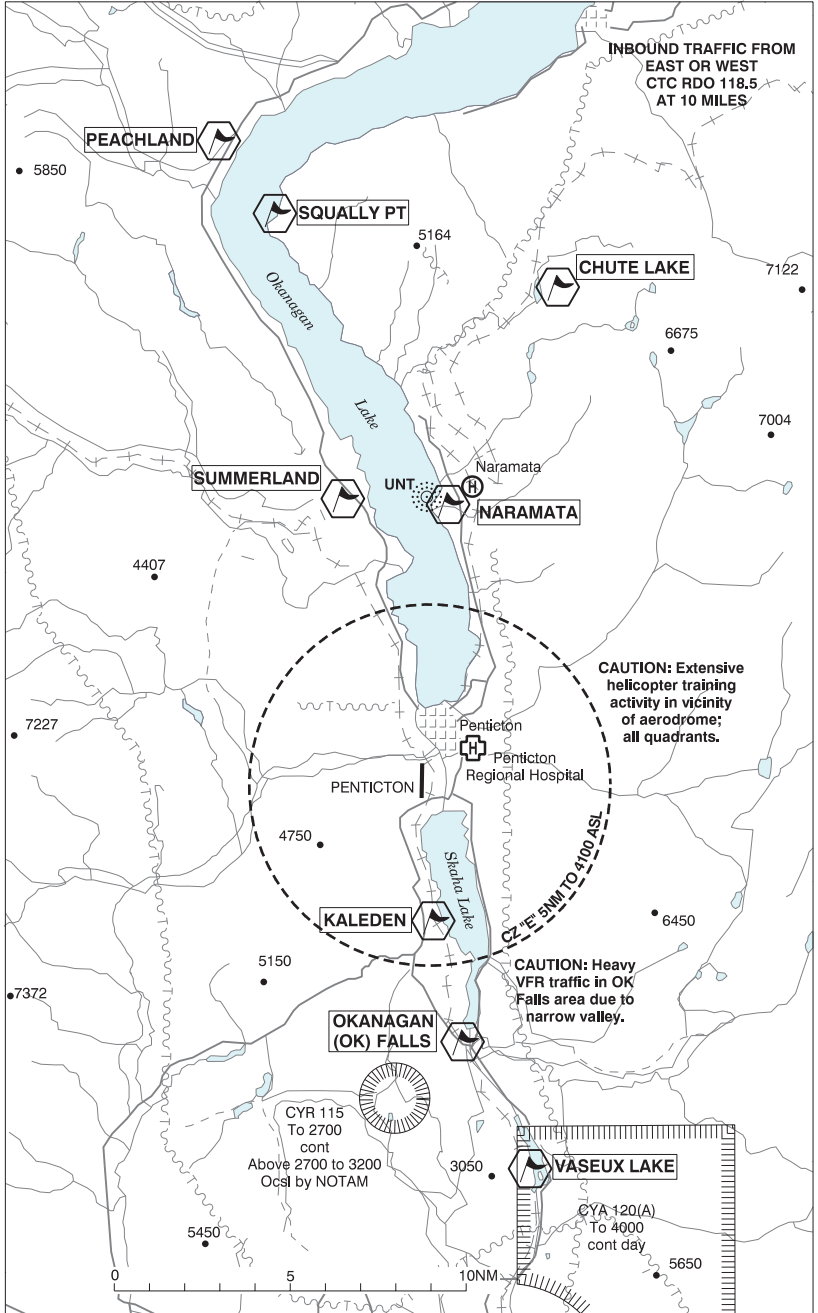
**PENTICTON REGIONAL HOSPITAL BC (Heli)**

**CPH6**



<b>REF</b>	N49 28 54 W119 34 34 Adj 17°E (2018) UTC-8(7) Elev 1356' A5004 A5005
<b>OPR</b>	Interior Health Authority 250-462-3785 Cert PPR
<b>PF</b>	B-1
<b>FLT PLN</b>	
<b>FIG</b>	Kamloops 866-WXBRIEF (Toll free within Canada) or 866-541-4101 (Toll free within Canada & USA)
<b>HELI DATA</b>	FATO 86' x 86' non-supporting TLOF 60' x 60' CONC Safety Area 115' x 115' 17,000 lbs Max heli overall length 57.4' (CAR 602.96). Elevated/rooftop heli.
<b>RCR</b>	Opr
<b>LIGHTING</b>	RY(ME) green LED ARCAL-123.2 type K
<b>COMM</b>	
<b>MF</b>	Penticton rdo 118.5 5NM 4100 ASL (CAR 602.98)
<b>PRO</b>	Arr/dep 335° fr heli (H1), day/night use (CAR 602.96) Arr/dep 078° to 170° fr heli (H1), day/night use (CAR 602.96)

**PENTICTON VFR TERMINAL PROCEDURES CHART**



## BRITISH COLUMBIA

AERODROME / FACILITY DIRECTORY

**PENTICTON VFR TERMINAL PROCEDURES CHART (Cont'd)**

<b>NAME</b>	<b>IDENT</b>	<b>LAT/LONG</b>
KALEDEN	VCKLE	N49° 24' 00" W119° 36' 00"
NARAMATA	VCNAR	N49° 35' 50" W119° 36' 11"
OKANAGAN (OK) FALLS	VCOKN	N49° 20' 33" W119° 34' 08"
PEACHLAND	VCPCH	N49° 46' 00" W119° 43' 59"
SQUALLY PT	VCSQL	N49° 44' 00" W119° 43' 01"
SUMMERLAND	VCSML	N49° 36' 00" W119° 40' 01"
VASEUX LAKE	VCVAS	N49° 17' 00" W119° 31' 59"
CHUTE LAKE	VCCHL	N49° 41' 38" W119° 31' 52"

**PENTICTON VFR TERMINAL PROCEDURES CHART - NIGHT CIRCUIT PROCEDURE**

