
FLIGHT PLAN & SITE SURVEY

H 275-4259 VICTORIA RADIO CONTROL MODELERS-
Michell Airpark

May 22, 2026



IMPORTANT NOTICE

Please ensure you have received all required authorizations prior to flight. This Site Survey was created using RPAS Wilco. The user accepts all responsibility for the accuracy of the information.

Terms & Conditions: rpaswilco.com/#tnc

Mission Information

H 275-4259 VICTORIA RADIO CONTROL MODELERS- MICHELL AIRPARK

FLIGHT DETAILS

Reference No:	MAAC-275-4259
Project Name:	VICTORIA RADIO CONTROL MODELERS
Pilot Name:	MAAC
Pilot Certificate:	
Mission Type:	VLOS
Flight Start:	May 22, 2026 07:32 PM
Flight End:	May 22, 2026 08:32 PM

LOCATION DETAILS

Flight Address:	Michell Airpark
Latitude:	48° 33' 57.20" N (48.566)
Longitude:	123° 23' 29.04" W (-123.391)
Field Elevation:	62 ft MSL
Altitude / Radius:	400 ft / 926 m (0.5 nm)
Classification:	UNCONTROLLED
FIR / Contact:	CZVR / 604-586-4500

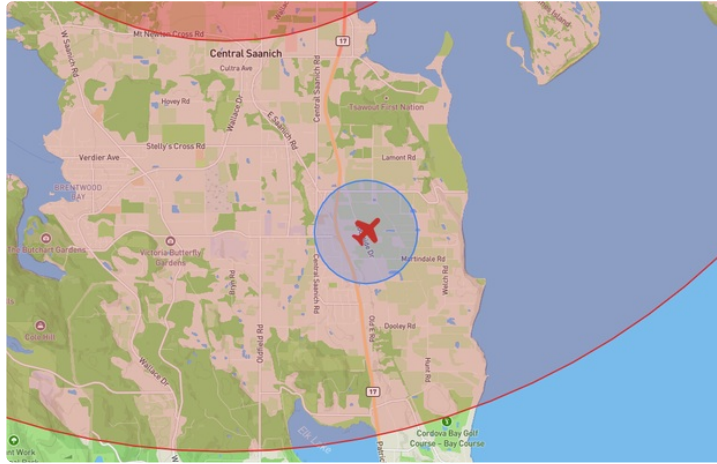
REPORT CONTENTS

Site Survey • Obstacles (if available) • Nearby Aerodromes • Canadian Aviation Regulations • GFA • Aerodrome Supplements • METAR & TAF • NOTAMs • CFS





Flight Map & MODEL Details

MISSION LOCATION SURVEY

FLIGHT AREA MAP



MISSION LOCATION DETAILS

ROLE	LATITUDE	LONGITUDE
 MODEL	48° 33' 57.20" N 48.566	123° 23' 29.04" W -123.391
 Pilot		
 Payload Op.		
 Observer		

Airspace Classification

MISSION LOCATION SURVEY

AIRSPACE MAP



OVERLYING AIRSPACES

Class	Name	Floor	Ceiling
E	Victoria Harbour, BC [TA]	700AGL	18000MSL
E	Victoria Harbour, BC [CZ]	SFC	2500MSL
E	Victoria Harbour, BC [TSP]	700AGL	12500MSL
F	CYA102 (M) BLACK ROCK, BC	SFC	10000MSL
F	CYR156 ALBERT HEAD, BC (Near Victoria, BC)	SFC	3000MSL
E	South Vancouver Island, BC b) [CAE]	700AGL	18000MSL
C	Vancouver, BC d) [TCA]	2500MSL	4500MSL
C	Vancouver, BC l) [TCA]	4500MSL	6500MSL
F	CYA755 (M) GOOSE BAY, NL	5000MSL	17000MSL
F	CYR 6.1.0-1 CFB ESQUIMALT, BC	SFC	1100MSL
F	CYR 6.1.0-2 CFB ESQUIMALT, BC	SFC	1100MSL
F	CYR104 ESQUIMALT, BC	SFC	2000MSL
E	Vancouver, BC f) [TA]	700AGL	18000MSL
C	Vancouver, BC n) [TCA]	3000MSL	6500MSL
C	Vancouver, BC s) [TCA]	6500MSL	8500MSL
C	Vancouver, BC t) [TCA]	8500MSL	9500MSL
E	Vancouver, BC g) [TA]	700AGL	18000MSL
C	Vancouver, BC u) [TCA]	9500MSL	12500MSL
B	Vancouver, BC v) [TCA]	12500MSL	18000MSL
E	T719 Fixed RNAV Route	2200AGL	18000MSL
E	T800 Fixed RNAV Route	2200AGL	18000MSL
C	Vancouver, BC m) [TCA]	700AGL	6500MSL
C	Victoria, BC [CZ]	SFC	2500MSL
D	Vancouver, BC a) [TCA]	1200MSL	2500MSL
D	Vancouver, BC [TSP]	1200MSL	2500MSL
E	Vancouver, BC [TSP]	1200MSL	12500MSL
E	V338 VHF/UHF Airway	2200AGL	18000MSL
F	CYA110 (H) VICTORIA, BC	SFC	2500MSL

NEAREST AERODROMES & DISTANCE FROM OPERATION

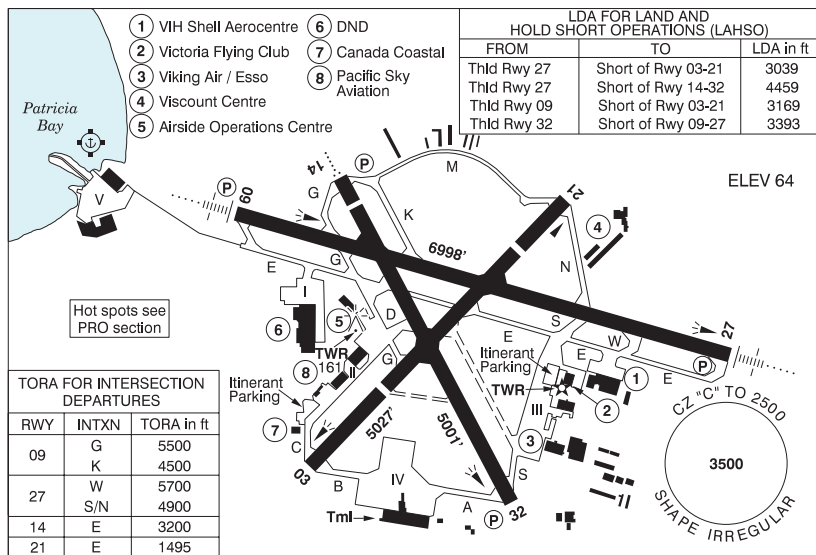
VICTORIA INTL (CYYJ) - AERODROME - Cert)	Lat: 48.647	Long: -123.426	9.356KM	5.052NM	N
VICTORIA AIRPORT (CAP5 - WATERDROME - Reg)	Lat: 48.654	Long: -123.449	10.631KM	5.74NM	NW
VICTORIA (GEN HOSPITAL) (CBW7 - HELIPORT - Cert)	Lat: 48.468	Long: -123.432	11.286KM	6.094NM	S

BRITISH COLUMBIA

AERODROME / FACILITY DIRECTORY

VICTORIA INTL BC

CYYJ



REF	N48 38 50 W123 25 33 12NNW 17°E (2011) UTC-8(7) Elev 64' VTA A5004 LO2 HI3 T1 CAP
OPR	Victoria Intl Aprt Authority 250-953-7536 Ext 4 H24 Cert Ldg fees
PF	A-1,2,3,6 C-4,5
CUST	AOE/120 (450 with staged off loading) 888-226-7277
FLT PLN	<p>FIG Kamloops 866-WXBRIEF (Toll free within Canada) or 866-541-4101 (Toll free within Canada & USA)</p> <p>ACC Vancouver IFR 604-586-4590/4591, 800-668-1333; IFR tng fits, IFR maintenance fits, IFR test fits, and IFR planned missed approach flts PPR ctc 604-586-4592, 800-668-1333.</p> <p>WX METAR H24. AUTO (See COMM) TAF H24, issue times: 00, 06, 12, 18Z.</p>
SERVICES	Call out chg may be levied for one or more svcs
FUEL	100LL, JB, F-34, JA-1 (FSII avbl), HPR
OIL	All
S	1,3
ARFF	DESIGNATED CAT 7 1330-0800Z± O/T call out chg
SUP FL	D & A-ICE CANWEST 250-883-6864 15-03Z±, 250-882-4271 1200-2030Z± or AC OPS 250-656-0764
JASU	CE16
MIL ADV	24hrs PN 443 Sqn ramp, ctc ops 250-363-5443 ext 51164. No svc avbl 443 Sqn. Call AC Gnd Handling for tran svcg 250-656-1171/0764
PVT ADV	World Fuel/Viking Air 122.95 250-656-3231; Shell 122.85 250-655-5346 13-02Z± O/T call out chg; Victoria Flying Club 129.05 250-656-2833
MIL CON	Viking Air Ltd 250-656-3231 1300-0200Z±

BRITISH COLUMBIA

AERODROME / FACILITY DIRECTORY

VICTORIA INTL BC (Cont'd)

CYYJ

RWY DATA	Rwy 09(089°)/27(269°) 6998x200 grooved ASPH Rwy 03(027°)/21(207°) 5027x200 ASPH Thld 03 displ 1405' Thld 21 displ 886' Rwy 14(135°)/32(315°) 5001x200 grooved ASPH Thld 14 displ 427' Rwy 32 up 0.39%
RWY CERT	Rwy 09 RVR 1200(1/4sm)/Rwy 27 RVR 1200(1/4sm) AGN V Rwy 03/21 AGN IIIA Rwy 14/32 AGN IIIA
TWY CERT	Twy: C, N AGN IIIB Twy K AGN II Twy M AGN I
TWY APRON	Twy M rstd to 12,500 lbs; Twy C rstd to 50,000 lbs. Apron II rstd to 50,000 lbs. Apron IV restricted to scheduled commercial tfc only. Exceptions require prior approval of aprt operator. Acft engine runs abv idle power prohibited, PPR fr OPR for idle power engine runs.
RCR	Twr 250-655-2866 1330-0730Z† Apr 1-Oct 31, 1230-0730Z† Nov 1-Mar 31 CRFI, Rwy 03/21 restricted to max 65,000 lbs for tkof and ldg. No weight restriction for taxiing acft Rwy 03/21 S of Rwy 14/32. PCN
LIGHTING	03-(TE ME), 21-(TE ME), 09-AN(TE HI) P2, 27-AN(TE HI) P2, 14-AO(TE ME) P2 3.37°, 32-(TE ME) P2 3.37° PAPI limitation/restriction. PAPI Rwy 14 to be used only within 2NM of thld, PAPI Rwy 14 & PAPI Rwy 32 on all rwy lgt settings. ARCAL-119.7 type K 08-14Z† Dur hrs of twr closure, one ILS will remain on.
COMM	<p>RCO Kamloops rdo 119.7 (RAAS) 08-14Z† Pacific rdo 122.375 (FISE) 126.7 (bcst)</p> <p>ATIS 118.8 14-08Z†</p> <p>CLNC DEL 126.4 14-08Z†</p> <p>GND 121.9 361.4 14-08Z† O/T IFR clnc prior to tkof ctc Kamloops rdo 119.7</p> <p>TWR 119.7 inner 119.1 outer 239.6 (E) 14-08Z† (emerg only 250-655-2866)</p> <p>MF Kamloops rdo 119.7 08-14Z† 7NM 2500 ASL (CAR 602.98)</p> <p>TML 127.8</p> <p>ARR 125.45</p> <p>DEP 125.95</p> <p>MIL 443 Sqn-call Stinger ops 349.3</p> <p>AUTO 118.8 08-14Z†</p>
NAV	<p>DME IKH 108.7 Ch 24 N48 39 10 W123 26 08 (80') YVH 117.0 Ch 117 N48 35 42 W123 32 38 (1880')</p> <p>ILS IKH 108.7 (Rwy 09) RVR IYJ 109.95 (Rwy 27) RVR</p>

VICTORIA INTL BC (Cont'd)

CYYJ

PRO

Pilots should refer to Canadian Airport Charts (CAC) to obtain details on established hot spots, prior to operating on maneuvering areas. CAC are available for free on the NAV CANADA website.

VFR DEP/ARR ROUTES**DEPARTURES:**

Beaver Point, Brentwood, Cordova, Cowichan, D'arcy Island, Moresby Island, Shawnigan Lake, Stuart Island

ALL ROUTES - Obtain Transponder code (see below);
Ctc Clearance Delivery (126.4);
Fly direct to assigned departure point;
Ctc Outer Twr (119.1) leaving 1000'.
Maintain 1500' until cleared higher by Outer Twr;

ARRIVALS:

Beaver Point, Brentwood, Cordova, Cowichan, D'arcy Island, Shawnigan Lake, Stuart Island

ALL ROUTES - Obtain Transponder code (see below);
Ctc Outer Twr 119.1;
Fly assigned route;
Maintain 2000' until cleared lower by Inner Twr (or turning final);
Ctc Inner Twr (119.7) at arrival point for landing instructions.

ARR NOTES:

High performance VFR turboprop and jet t/c (in Victoria tml airspace) ldg CYYJ can expect radar vectors to 8NM final at or above 3000'; Beaver Point arrival restricted to 160kt or less in Victoria Twr airspace (2500' or blw).

OBTAINING A TRANSPONDER CODE:

All VFR aircraft arriving/departing/overflying Victoria Class C or D airspace require a transponder code, obtained by:

- Filing a VFR flight plan;
- Contacting Kamloops FIC at 866-541-4101;
- Contacting Pacific rdo on 122.375; or
- Contacting one of the following ATS units enroute: CYHC, CYCD, CYWH, CZBB, CYXX, CYNJ or CYPK.

PPR for non-transponder ops within Victoria Class C or D airspace, ctc 250-655-2869.

TAXI ROUTES FOR WIDEBODY ACFT:

Rwy 09 Dep: Twy B, Rwy 03/21, Twy G, Twy E.

Rwy 09 Arr: Twy E westbound, Twy S, Twy A.

Rwy 27 Dep: Twy A, Twy S, Twy E eastbound.

Rwy 27 Arr: Twy E, Twy G, Rwy 03/21, Twy B.

VICTORIA INTL BC (Cont'd)

CYYJ

PRO (Cont'd)	<p>DE-ICING GENERAL:</p> <ol style="list-style-type: none"> 1. De-icing at gates is not permitted without authorization from airport operator. 2. North de-icing pad access is controlled by DE-ICE CONTROL. ALL Aircraft must have an approved assignment time prior to pushback or taxi. 3. Assignment times will be provided to de-icing providers only and are provided at 20-minute intervals. De-icing provider contact information and times are detailed in the Services section. 4. ATC does not have oversight of de-icing assignments; all inquires must be directed to de-icing providers or Snow Desk when open (250-953-7595). If the Snow Desk is not open, all inquiries should be directed to de-icing providers or Airport Operations, Manager, Integrated Operations Centre. <p>SCHEDULED COMMERCIAL AIRCRAFT:</p> <ol style="list-style-type: none"> 1. De-icing assignments will be communicated to commercial aircraft via de-icing providers and individual company processes. 2. NO de-icing will occur until an assignment has been issued. <p>NON-SCHEDULED AIRCRAFT:</p> <ol style="list-style-type: none"> 1. Aircraft requiring an assignment shall contact a de-icing provider, who will request the assignment. 2. De-ice control will issue the assignment between scheduled commercial movements and notify the de-icing provider. The de-icing provider will provide the assignment to the aircraft. 3. If the non-scheduled aircraft misses their assignment, a new assignment must be obtained. 4. NO de-icing will occur until an assignment has been issued.
NOISE	<p>NOISE OPERATING RESTRICTIONS: All night circuit and VFR dep climb rwy hdg to 1100' prior to turning crosswind or to dep pt, unless otherwise directed by ATC. Consistent with limiting factors, all acft shall use Rwy 09/27 fr 04-15Z±. Limiting Factors: -Physical cond of sfc (dry, wet, icy); -Max effective crosswind component of 15kt; -Max effective tailwind component of 5kt; -Visual restrictions due to position of the sun. Local turbo-jet tng not permitted fr 06-15Z±.</p> <p>GENERAL: Night ops Rwy 03/21 not auth, except tkof Rwy 03. Rgt hand circuits Rwy 09, 21 & 32 (CAR 602.96)</p> <p>AIRSPACE: CAR Part VII opr must ensure routes flown at night meet minimum alt requirements for commercial ops.</p>
MIL	<p>Apron 1 DND - PPR req via 443 MH Sqn Ops: (250) 363-5443 ext. 51081. Transient aircraft to park on SW portion of apron. NW section of apron has max loading of 51/R/A. No taxiing permitted E of hangar.</p>
CAUTION	<p>Hwy crosses apch to Rwy 14. Aprx 750' fr thld mobile obst to 30' above thld elev. Only pilots familiar with local terrain should use this apch dur hrs of darkness. Hi terrain reduces operational length of Rwy 14 PAPI. Resident Canada Goose population significant hazard at or blw 400 AGL west of thld Rwy 09 out to 1.5 NM. Migratory birds in vic of aprt Oct-Apr.</p>

VICTORIA INTL VFR TERMINAL PROCEDURES CHARTS



VICTORIA ARRIVALS

TML	ATIS	TWR		GND
		OUTER	INNER	
127.8	O/T AUTO 118.8	119.1	119.7	121.9
		O/T Kamloops rdo 119.7 (7NM)		

PROCEDURES:

- Initial contact 119.1.
- Fly the assigned arrival route.
- **Maintain 2000' until cleared lower or turning final.**
- Contact 119.7 at the arrival point for landing instructions.
- If unable contact on 119.7 at the arrival point, maintain 2000' and proceed to final approach.

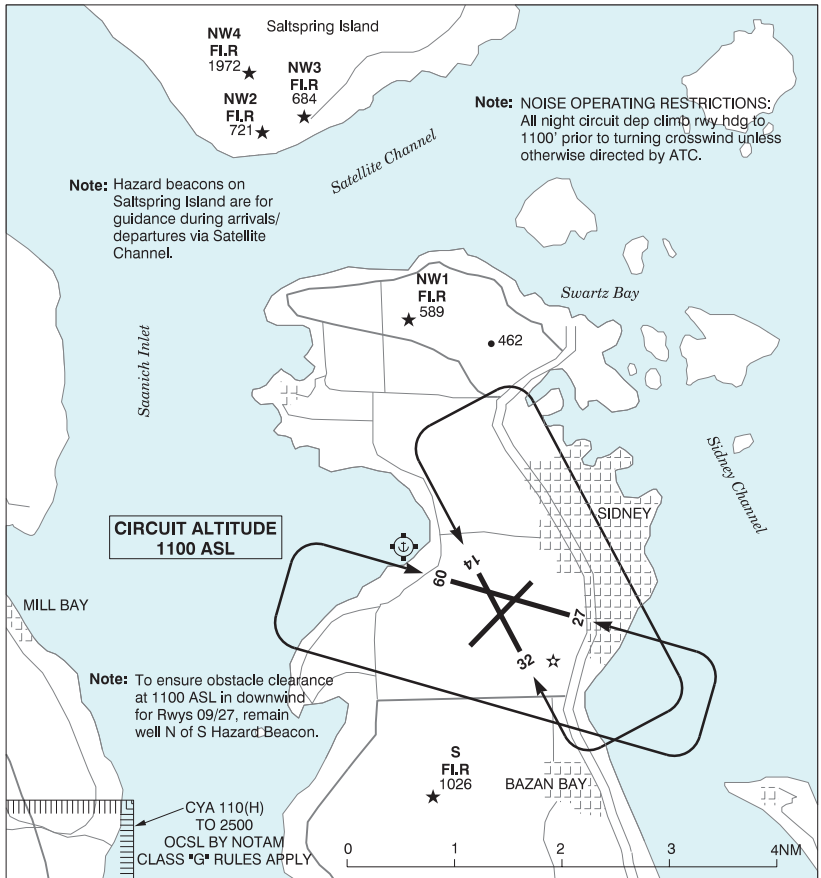
BRITISH COLUMBIA

AERODROME / FACILITY DIRECTORY

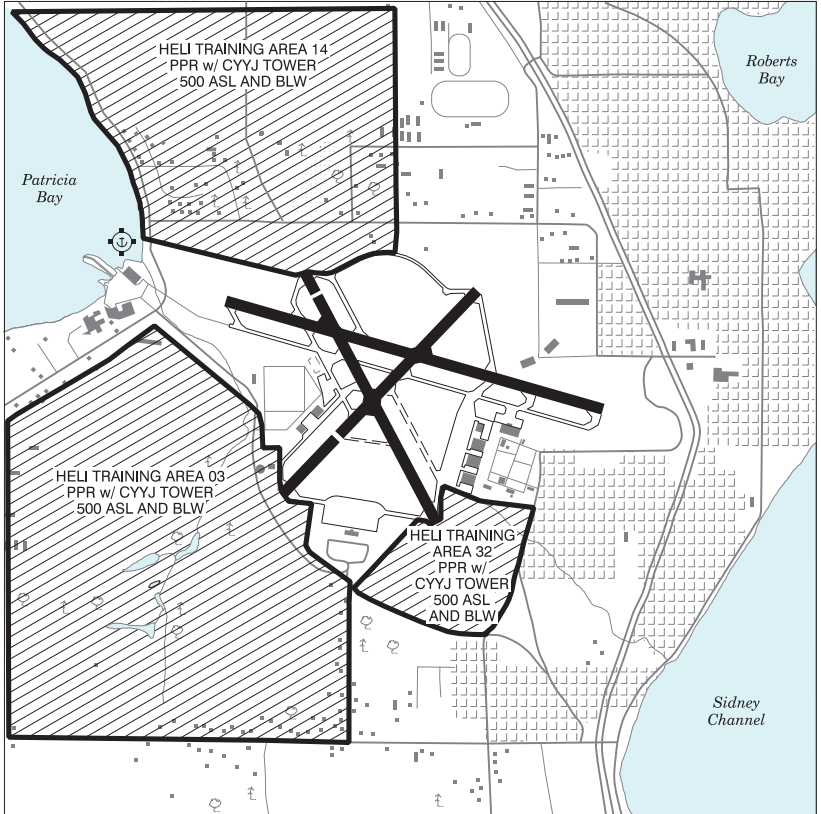
VICTORIA INTL VFR TERMINAL PROCEDURES CHARTS (Cont'd)

NAME	IDENT	LAT/LONG
ACTIVE PASS	VCACT	N48° 52' 24" W123° 18' 18"
BEAVER POINT	VCBVR	N48° 46' 18" W123° 22' 18"
BRENTWOOD BAY	VCBWB	N48° 34' 48" W123° 29' 12"
CORDOVA BAY	VCCOR	N48° 31' 12" W123° 20' 36"
COWICHAN BAY	VCCOW	N48° 44' 30" W123° 36' 18"
D'ARCY ISLAND	VCDRC	N48° 34' 00" W123° 16' 42"
EAST POINT	VCEST	N48° 47' 00" W123° 02' 48"
FINLAYSON	VCFNL	N48° 30' 24" W123° 31' 54"
GANGES	VCGAN	N48° 50' 30" W123° 27' 54"
MORESBY ISLAND	VCMOR	N48° 42' 42" W123° 18' 00"
SAMUEL ISLAND	VCSAM	N48° 49' 30" W123° 12' 54"
SHAWNIGAN LAKE	VCSHW	N48° 38' 30" W123° 38' 30"
SOMENOS LAKE	VCSOM	N48° 48' 12" W123° 42' 18"
SOOKE LAKE	VCSOO	N48° 34' 24" W123° 40' 54"
STUART ISLAND	VCSRT	N48° 41' 12" W123° 13' 54"
VESUVIUS BAY	VCVES	N48° 52' 00" W123° 33' 24"

VICTORIA INTL VFR TERMINAL PROCEDURES CHART - NIGHT CIRCUIT PROCEDURES



VICTORIA INTL VFR TERMINAL PROCEDURES CHART - TRAINING AREAS



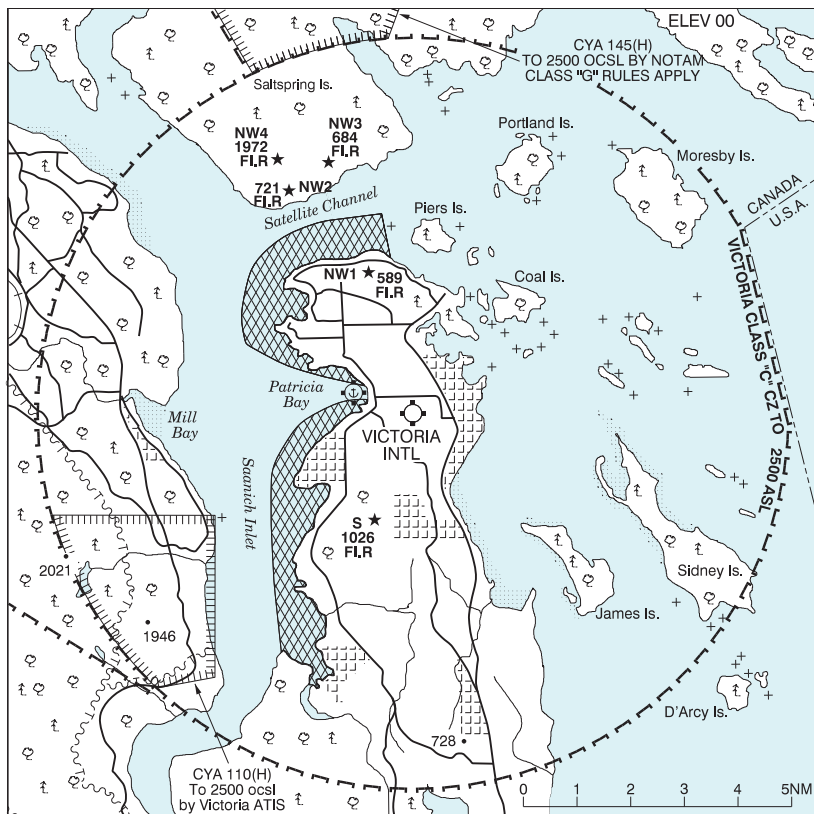
CANADA WATER AERODROME SUPPLEMENT

Effective 0901Z 19 March 2026 to 0901Z 18 February 2027

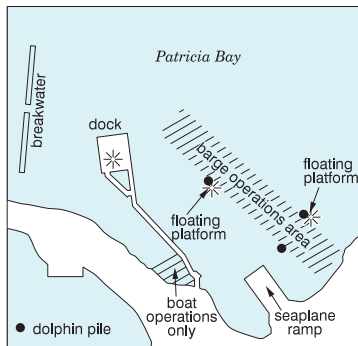
AERODROME/FACILITY DIRECTORY B281

VICTORIA AIRPORT BC

CAP5



REF	N48 39 13 W123 26 57 12NNW 17°E (2013) UTC-8(7) Elev 00' VTA A5004 LO2 T1
OPR	Victoria Intl Aprt Authority 250-953-7500/7511 Reg
PF	A-1,2,3,6 at adj land A/D C-4,5
CUST	AOE/15/SEAPL 888-226-7277 1630-0030Z†
FLT PLN	
FIC	Kamloops 866-WXBRIEF (Toll free within Canada) or 866-541-4101 (Toll free within Canada & USA)
WX	METAR H24 (CYYJ) AUTO (See COMM) TAF H24, issue times: 00, 06, 12, 18Z



SERVICES	
FUEL	100LL 866-654-0646 PN
OIL	20W50
S	1,3 at adj land A/D, 5

CANADA WATER AERODROME SUPPLEMENT

Effective 0901Z 19 March 2026 to 0901Z 18 February 2027

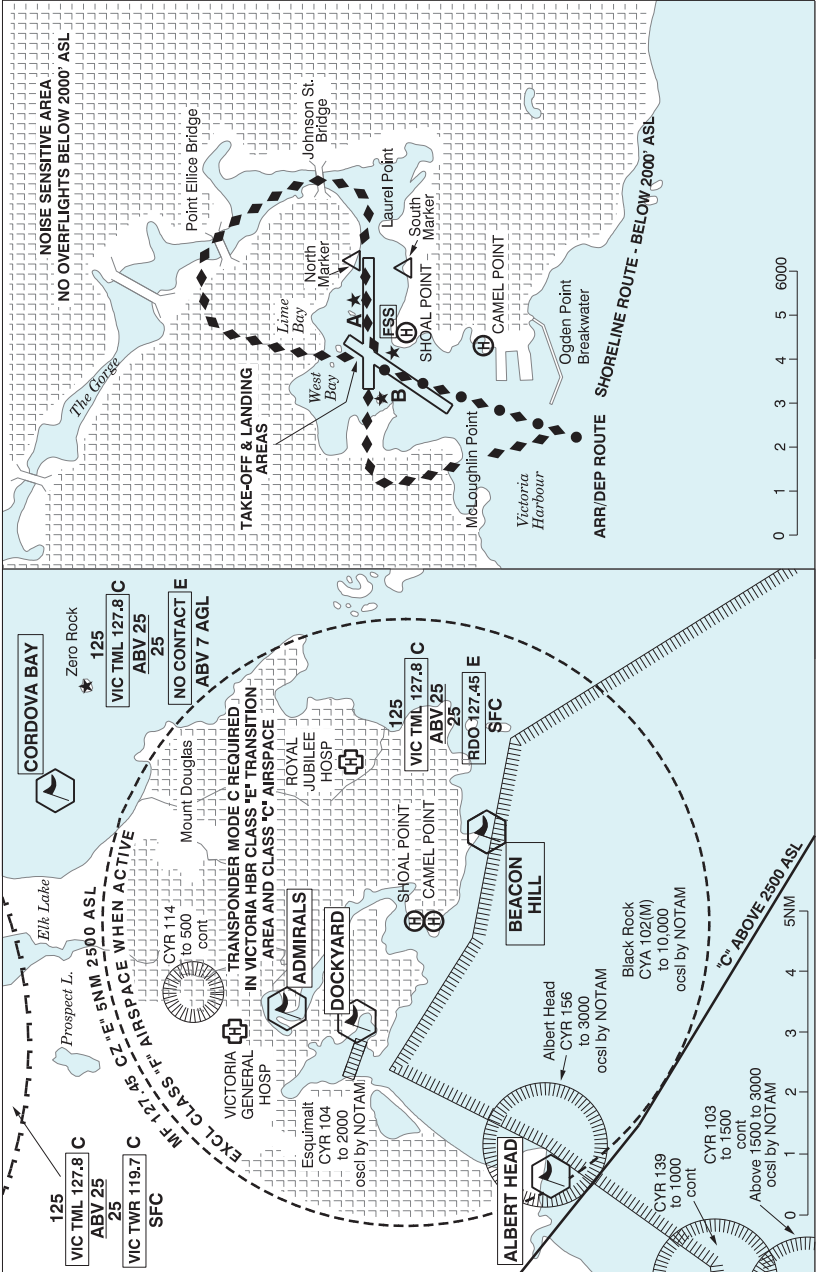
B282 AERODROME/FACILITY DIRECTORY

VICTORIA AIRPORT BC (Cont'd)

CAP5

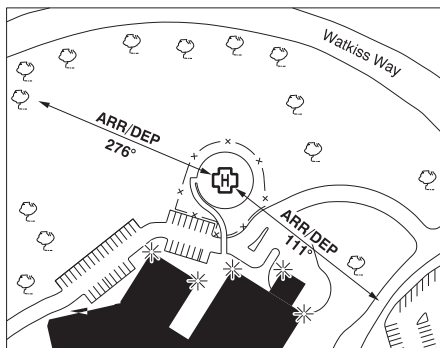
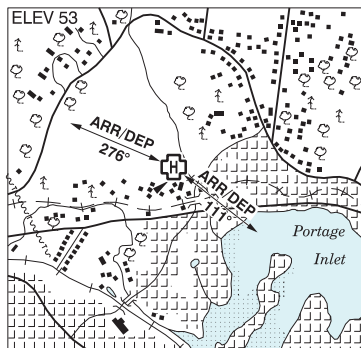
A/D DATA	Tidal range 10', current 1-2 kt. Military buoys in bay. Ramp.
DOCKS	Single and Twin Otter acft prkg only auth on E side of dock.
COMM	
RCO	Kamloops rdo 119.7 (RAAS) 08-14Z† Pacific rdo 122.375 (FISE) 126.7 (bcst)
ATIS	118.8 14-08Z†
CLNC DEL	126.4 14-08Z†
GND	121.9 361.4 14-08Z†
TWR	119.7 inner 119.1 outer 239.6 (E) 14-08Z† (emerg only 250-655-2866)
MF	Kamloops rdo 119.7 08-14Z† 7NM centred on adj land A/D 2500 ASL (CAR 602.98)
AUTO	118.8 08-14Z†
PRO	Land A/D Adj E; alighting area within class "C" CZ. Water cond permitting, avoid ops closer than 0.5NM from shoreline due Noise Sensitive Area.
CAUTION	Rough water in W winds.

VICTORIA HARBOUR VFR TERMINAL PROCEDURES CHART



VICTORIA (GEN HOSP) BC (Heli)

CBW7



REF	N48 28 05 W123 25 56 17°E (2012) UTC-8(7) Elev 53' VTA A5004
OPR	Island Health 250-370-8555 Cert NVIS OPS AUTH PPR
PF	A-1,2,4 C-3,5,6
FLT PLN	
FIC	Kamloops 866-WXBRIEF (Toll free within Canada) or 866-541-4101 (Toll free within Canada & USA)
HELI DATA	FATO/TLOF 86' dia CONC Safety Area 115' dia Max heli overall length 57.4' (CAR 602.96)
RCR	Opr
LIGHTING	RW(ME) PN
COMM	
RADIO	Harbour rdo 127.45 (V) 1345-0530Z‡
RCO	Pacific rdo 125.85 (FISE) 126.7 (bcst)
ATIS	Victoria Harbour 120.0 14-05Z‡
MF/ATF	Harbour rdo 1345-0530Z‡ O/T Harbour tfc 127.45 5NM 2500 ASL within Victoria Harbour CZ (CAR 602.98)
PRO	Arr/dep 111° fr heli, slope 12% (H2), day/night use (CAR 602.96). Arr/dep 276° fr heli, slope 16% (H2), NVIS rqrd for night use (CAR 602.96).