
FLIGHT PLAN & SITE SURVEY

H 398-4365 NORTH VANCOUVER RADIO CONTROL CLUB-
INTER RIVER PARK, NORTH VANCOUVER

May 22, 2026



IMPORTANT NOTICE

Please ensure you have received all required authorizations prior to flight. This Site Survey was created using RPAS Wilco. The user accepts all responsibility for the accuracy of the information.

Terms & Conditions: rpaswilco.com/#tnc

Mission Information

H 398-4365 NORTH VANCOUVER RADIO CONTROL CLUB- INTER RIVER PARK, NORTH VANCOUVER

FLIGHT DETAILS

Reference No:	MAAC-398-4365
Project Name:	NORTH VANCOUVER RADIO CONTROL CLUB
Pilot Name:	MAAC
Pilot Certificate:	
Mission Type:	VLOS
Flight Start:	May 22, 2026 07:34 PM
Flight End:	May 22, 2026 08:34 PM

LOCATION DETAILS

Flight Address:	INTER RIVER PARK, NORTH VANCOUVER
Latitude:	49° 19' 20.60" N (49.322)
Longitude:	123° 1' 30.50" W (-123.025)
Field Elevation:	203 ft MSL
Altitude / Radius:	400 ft / 926 m (0.5 nm)
Classification:	UNCONTROLLED
FIR / Contact:	CZVR / 604-586-4500

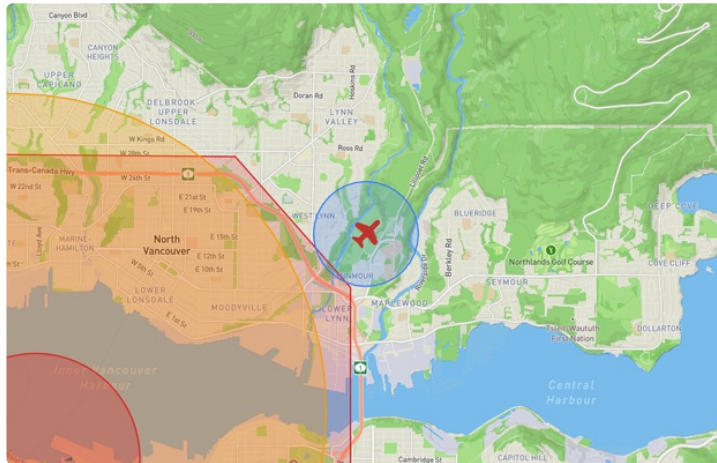
REPORT CONTENTS

Site Survey • Obstacles (if available) • Nearby Aerodromes • Canadian Aviation Regulations • GFA • Aerodrome Supplements • METAR & TAF • NOTAMs • CFS




Flight Map & MODEL Details

MISSION LOCATION SURVEY

FLIGHT AREA MAP



MISSION LOCATION DETAILS

ROLE	LATITUDE	LONGITUDE
 MODEL	49° 19' 20.60" N 49.322	123° 1' 30.50" W -123.025
 Pilot		
 Payload Op.		
 Observer		

Airspace Classification

MISSION LOCATION SURVEY

AIRSPACE MAP



OVERLYING AIRSPACES

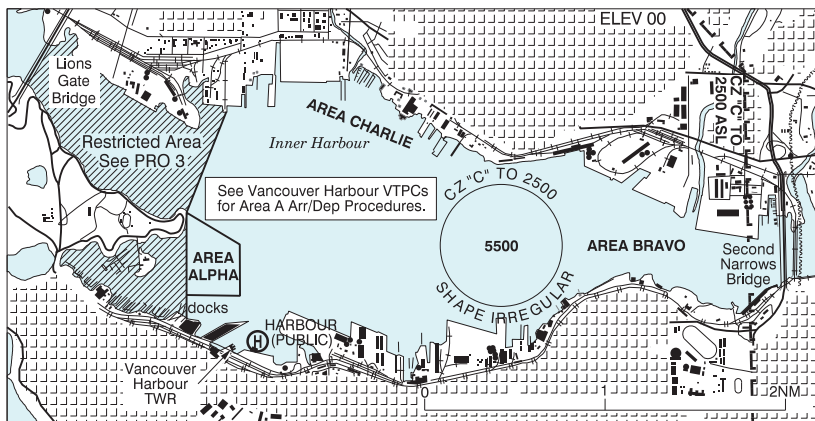
Class	Name	Floor	Ceiling
C	Vancouver, BC l) [TCA]	4500MSL	6500MSL
C	Vancouver, BC s) [TCA]	6500MSL	8500MSL
C	Vancouver, BC t) [TCA]	8500MSL	9500MSL
C	Vancouver, BC u) [TCA]	9500MSL	12500MSL
B	Vancouver, BC v) [TCA]	12500MSL	18000MSL
C	Vancouver, BC d) [TCA]	2500MSL	4500MSL
E	V342-1 VHF/UHF Airway	2200AGL	18000MSL
E	T800 Fixed RNAV Route	2200AGL	18000MSL
E	V304 VHF/UHF Airway	2200AGL	18000MSL
E	T775 Fixed RNAV Route	2200AGL	18000MSL
E	Pitt Meadows, BC a) [CAE]	1500MSL	18000MSL
E	Pitt Meadows, BC b) [CAE]	2000MSL	18000MSL
C	Vancouver, BC c) [TCA]	1200MSL	2500MSL
E	V347 VHF/UHF Airway	2200AGL	18000MSL
C	Vancouver, BC [CZ]	SFC	2500MSL
E	V330 VHF/UHF Airway	2200AGL	18000MSL
C	Vancouver, BC q) [TCA]	3200MSL	6500MSL
C	Vancouver Outer Control Zone, BC [CZ]	800MSL	2500MSL
D	Vancouver Outer Control Zone, BC [CZ]	SFC	800MSL
E	T618 Fixed RNAV Route	2200AGL	18000MSL
F	CYA133 (H) VANCOUVER, BC	SFC	5000MSL
C	Vancouver Harbour, BC [CZ]	SFC	2500MSL
F	CYA185 (A,T,H) ALOUETTE LAKE, BC	SFC	4000MSL

NEAREST AERODROMES & DISTANCE FROM OPERATION

VANCOUVER HARBOUR (CYHC - WATERDROME - Reg)	Lat: 49.294	Long: -123.111	6.982KM	3.77NM	SW
HARBOUR (PUBLIC) (CBC7 - HELIPORT - Cert)	Lat: 49.287	Long: -123.106	7.072KM	3.819NM	SW
VANCOUVER (GEN HOSPITAL) (CBK4 - HELIPORT - Cert)	Lat: 49.262	Long: -123.124	9.851KM	5.319NM	SW

VANCOUVER HARBOUR BC (water aerodrome)

CYHC



REF	N49 17 40 W123 06 41 Adj N 17°E (2013) UTC-8(7) Elev 00' VTA A5004 LO1 T1
OPR	Harbour Air 1-800-665-0212 Reg PN Vancouver Harbour Flight Centre (VHFC) 604-647-7570 or 604-328-4340 PN
PF	B-1,2 C-3,4,5,6
CUST	AOE/15 888-226-7277
FLT PLN	<p>FIG Kamloops 866-WXBRIEF (Toll free within Canada) or 866-541-4101 (Toll free within Canada & USA)</p> <p>ACC 604-775-9601/9606/9674</p> <p>WX LWIS H24 LAWO 15-02Z± or til 1/2 hr after SS, whichever is later.</p>
SERVICES	<p>FUEL 100, JB, (100LL, JA, JA-1 avbl thru VHFC) PN</p> <p>OIL 100</p> <p>S 5</p>
COMM	<p>RCO Pacific rdo 123.15 (FISE)</p> <p>ATIS Vancouver Harbour 126.8 dur twr hrs of ops.</p> <p>CLNC DEL Vancouver Harbour 125.35 all dep acct ctc clnc del only if instructed to do so on ATIS</p> <p>TWR Vancouver Harbour 118.4 (V) 15-02Z± or til half hour after SS, whichever is later. (emerg only 604-688-9254)</p> <p>ATF tfc 118.4 when twr clsd within Vancouver Harbour CZ shape irregular 2500 ASL</p> <p>TML 125.2</p>

BRITISH COLUMBIA

AERODROME / FACILITY DIRECTORY

VANCOUVER HARBOUR BC (water aerodrome) (Cont'd)

CYHC

NAV

VOR/DME YVR 115.9 Ch 106 N49 04 38 W123 08 57 (37')

PRO

General Aviation: Refer to Vancouver Harbour VTPCs.

Commercial Aviation:

1. Listen to ATIS for direction of arr/dep and refer to the VTPCs for typical configurations (westbound, eastbound, southeastbound) and arr/dep pro for Area A as well as scenic tours over downtown Vancouver. ATC instructions override depicted procedures.
2. Arr/dep after 0700 hrs incl. Noise sensitive areas adj to Area A.
3. Acft ops normally ltd to Area A. SW corner of Area A marked by orange buoy. No acft shall land, tkof or step taxi within rstd areas including First Narrows (Lions Gate) and False Creek. Coordinate with ATC before proceeding into Area A. Report ready for tkof when ready to apply power.
4. Pilots are requested, while observing safe oprg procedures, to maintain arr/dep profiles that avoid low flt and high power settings over Stanley Park.
5. See Vancouver VTA for VFR low lvl transit routes beyond CYHC CZ.
6. Commercial scenic tours in Howe Sound: avoid turning back towards YHC CZ South of Eagle Harbour and plan to return to YHC CZ 2,000' or ctc ATC early for conflicts with outbound tfc.

ATS REQUIREMENTS:

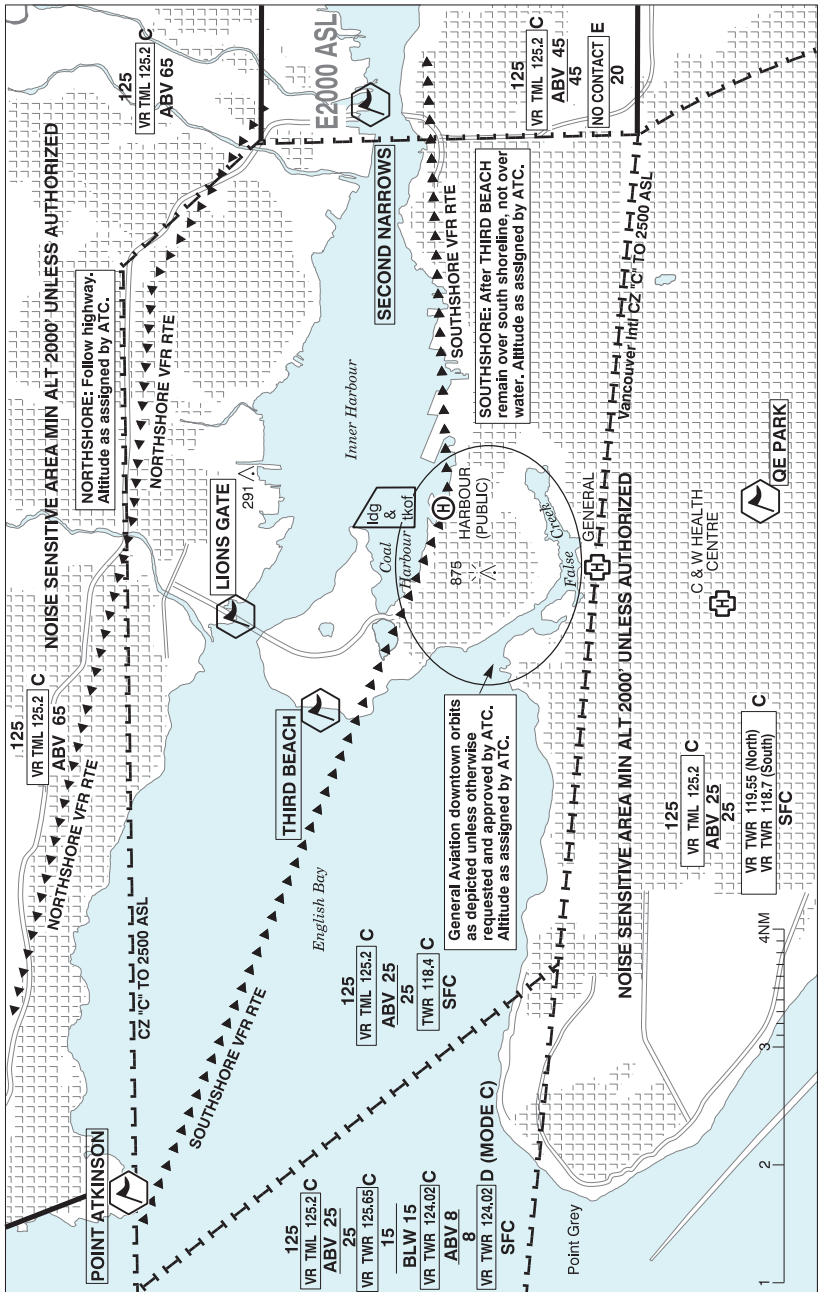
All VFR acft arriving, departing or transiting the Vancouver or Victoria Tower Class C or D airspace require a transponder code.

- All acft departing Vancouver or Victoria Intl (including Water Aerodrome) call Kamloops FIC at 866-541-4101 for code assignment at least 30 min prior to flight or file a VFR Flight Plan/Flight Itinerary.

- All acft arriving Vancouver, Victoria Intl (including Water Aerodrome) or transiting Vancouver or Victoria Control Zones obtain a code from one of the following ATS units: Vancouver Harbour, Nanaimo, Victoria Harbour, Boundary Bay, Langley, Abbotsford or Pitt Meadows or call Kamloops FIC at 866-541-4101.

-All acft arriving Victoria Intl from a non NAV CANADA site call Kamloops FIC at 866-541-4101 for code assignment at least 30 minutes prior to flight or file a VFR Flight Plan/ Flight Itinerary.

VANCOUVER HARBOUR VFR TERMINAL PROCEDURES CHART



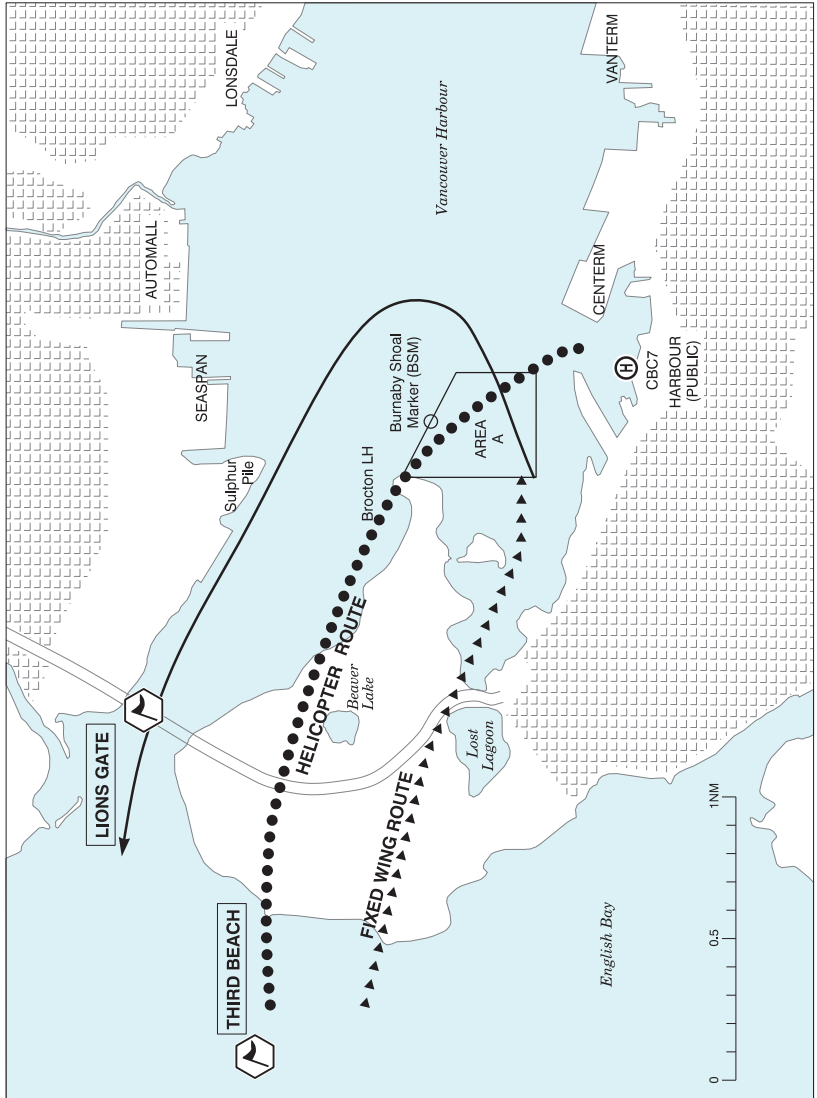
BRITISH COLUMBIA

AERODROME / FACILITY DIRECTORY

VANCOUVER HARBOUR VFR TERMINAL PROCEDURES CHART (Cont'd)

NAME	IDENT	LAT/LONG
LIONS GATE	VCLSG	N49° 18' 54" W123° 08' 18"
POINT ATKINSON	VCATK	N49° 19' 48" W123° 15' 54"
QE PARK	VCQEP	N49° 14' 18" W123° 07' 24"
SECOND NARROWS	VCSEC	N49° 17' 42" W123° 01' 36"
THIRD BEACH	VCIII	N49° 18' 30" W123° 10' 12"

VANCOUVER HARBOUR VFR TERMINAL PROCEDURES CHART - EASTBOUNDS



NAME	IDENT	LAT/LONG
LIONS GATE	VCLSG	N49° 18' 54" W123° 08' 18"
THIRD BEACH	VCIII	N49° 18' 30" W123° 10' 12"

VANCOUVER HARBOUR VFR TERMINAL PROCEDURES CHART - EASTBOUNDS

ARRIVALS

From Third Beach, remain S or over Stanley Park Causeway until past Lost Lagoon.
CAUTION: See NOTAMs regarding long-term crane between Lost Lagoon and Beaver Lake.

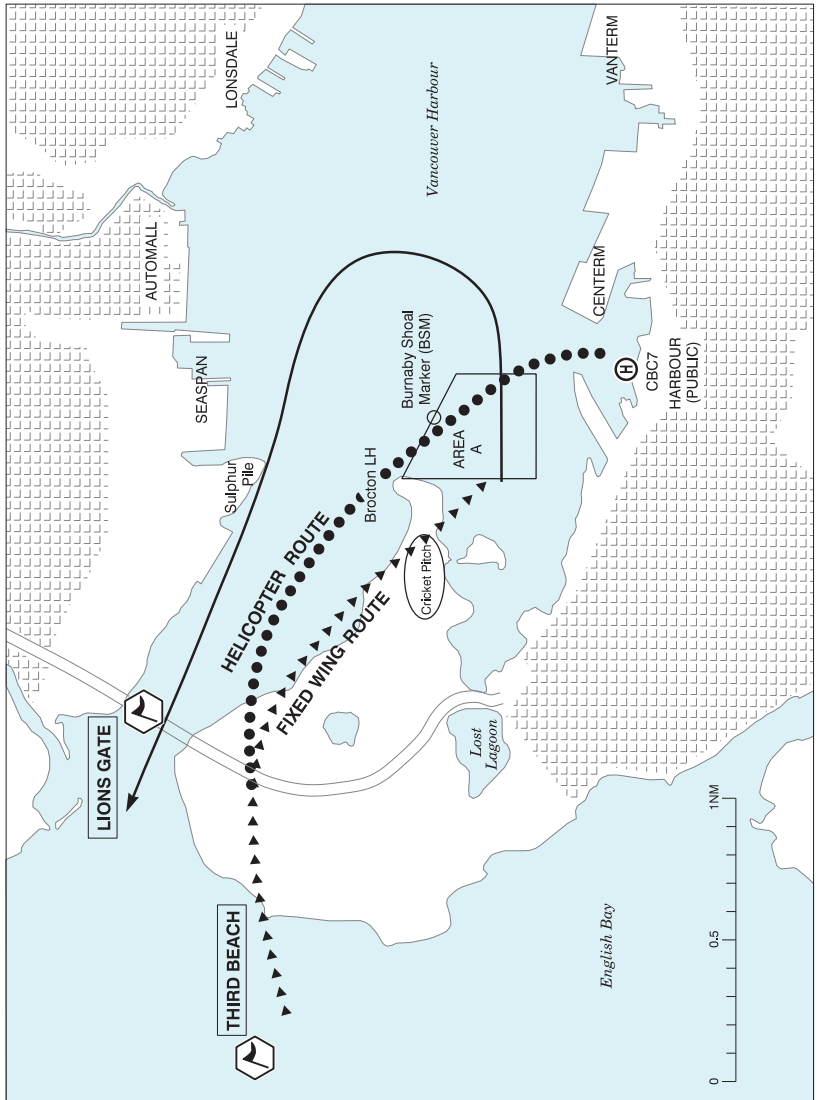
CBC7: Apch via N end of Third Beach and Brocton, expect instructions to remain N and behind tfc ldg on water.

DEPARTURES

Dep NE and turn for Lions Gate Bridge, turn may be controlled by ATC. Join published outbound rte at Lions Gate at 1000 unless otherwise cleared by ATC.

CBC7: Dep CBC7 NNE and join dep path. Then join published outbound rte at Lions Gate unless otherwise cleared by ATC.

VANCOUVER HARBOUR VFR TERMINAL PROCEDURES CHART - SOUTHEASTBOUNDS



NAME	IDENT	LAT/LONG
LIONS GATE	VCLSG	N49° 18' 54" W123° 08' 18"
THIRD BEACH	VCIII	N49° 18' 30" W123° 10' 12"

**VANCOUVER HARBOUR VFR TERMINAL PROCEDURES CHART -
SOUTHEASTBOUNDS (Cont'd)**

ARRIVALS

From Third Beach fly base and final to apch over Cricket Pitch.

CBC7: Apch via Brocton/BSM.

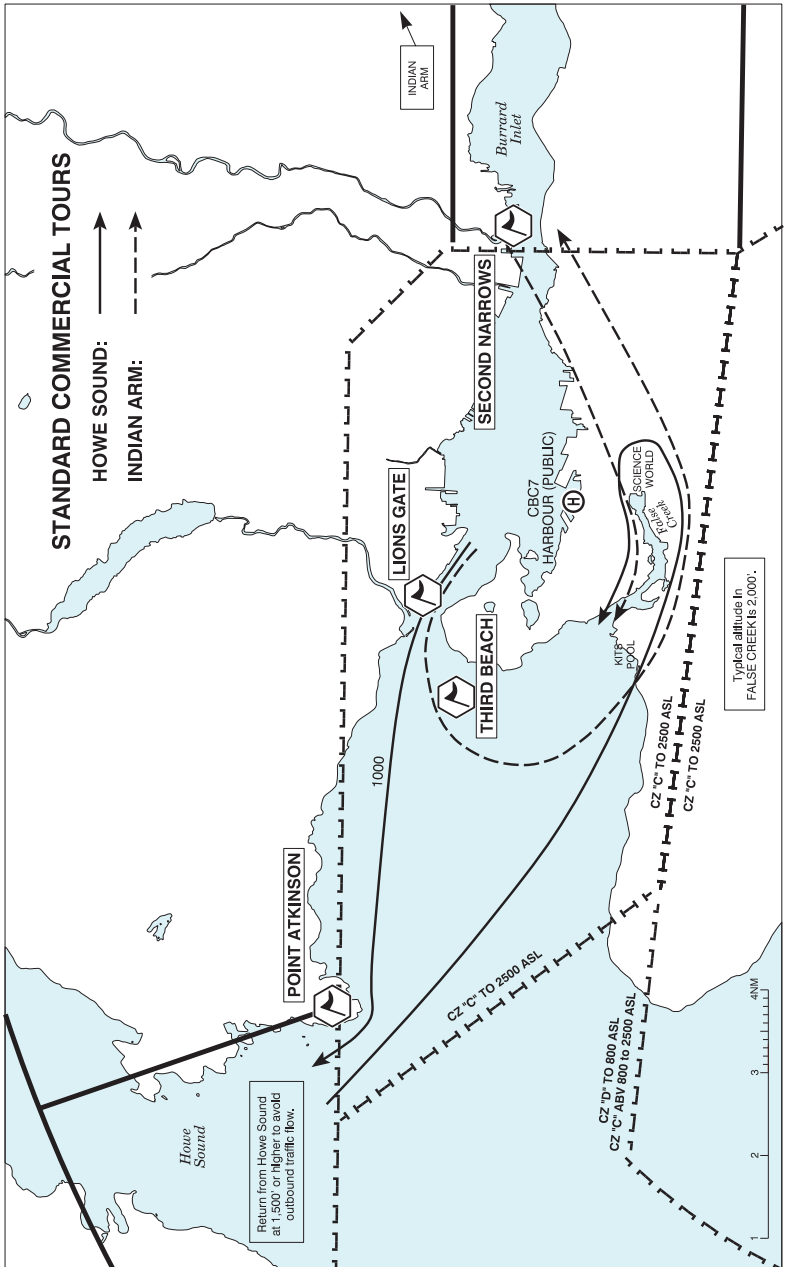
DEPARTURES

Inquire with ATC before taxiing N of "the ball". Remain S of Chevron Barge unless otherwise coordinated with ATC.

Dep E and turn for Lions Gate Bridge, turn may be controlled by ATC. Join published outbound rte at Lions Gate at 1000 ASL unless otherwise cleared by ATC.

CBC7: Dep CBC7 NNE and join dep path then join published outbound rte at Lions Gate at 1000 ASL unless otherwise cleared by ATC.

VANCOUVER HARBOUR VFR TERMINAL PROCEDURES CHART - STANDARD COMMERCIAL TOURS



BRITISH COLUMBIA

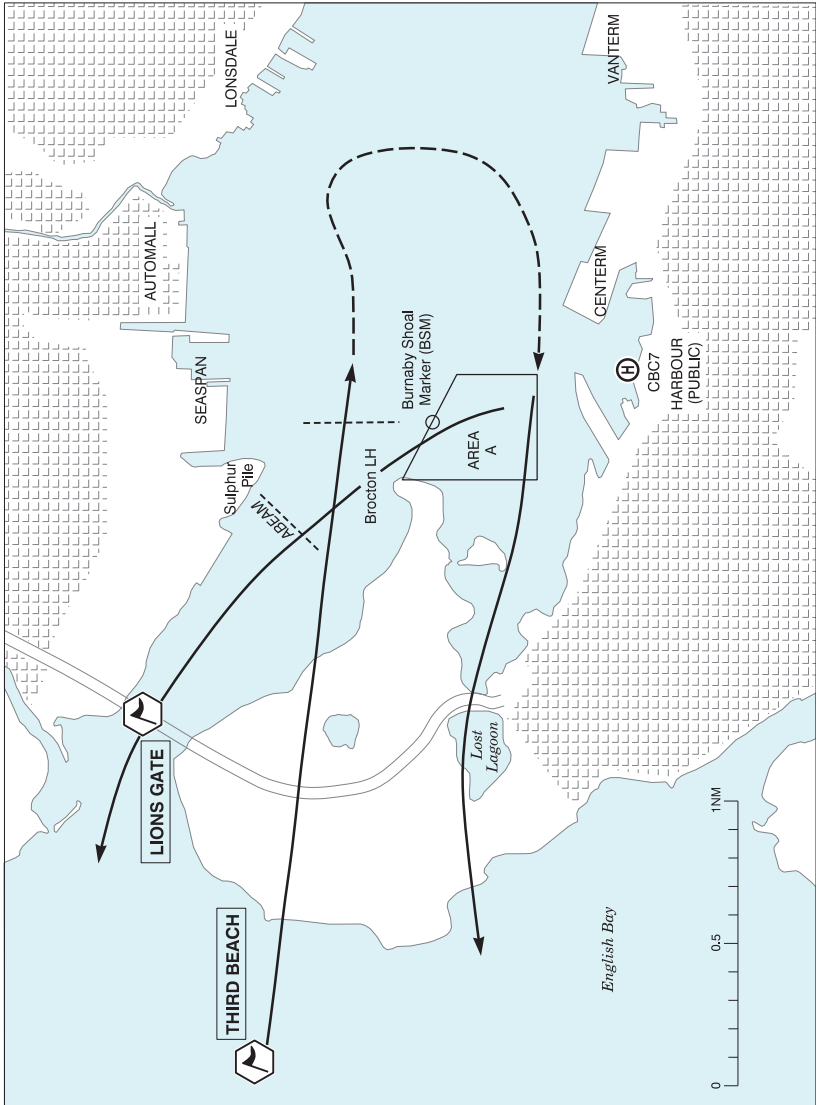
AERODROME / FACILITY DIRECTORY

**VANCOUVER HARBOUR VFR TERMINAL PROCEDURES CHART - STANDARD
COMMERCIAL TOURS (Cont'd)**

NAME	IDENT	LAT/LONG
LIONS GATE	VCLSG	N49° 18' 54" W123° 08' 18"
POINT ATKINSON	VCATK	N49° 19' 48" W123° 15' 54"
SECOND NARROWS	VCSEC	N49° 17' 42" W123° 01' 36"
THIRD BEACH	VCIII	N49° 18' 30" W123° 10' 12"

1. Listen to ATIS for assigned standard tour rte:
HOWE SOUND:
INDIAN ARM:
2. Default tour rte is HOWE SOUND. Fly assigned standard tour. Rte modifications for wx or special requests provided on workload, tfc and conditions permitting basis.
3. On initial ctc, inform ATC of intentions to fly standard tour.
4. Follow rte as depicted. ATC will provide additional instructions when required.

VANCOUVER HARBOUR VFR TERMINAL PROCEDURES CHART - WESTBOUNDS



NAME	IDENT	LAT/LONG
LIONS GATE	VCLSG	N49° 18' 54" W123° 08' 18"
THIRD BEACH	VCIII	N49° 18' 30" W123° 10' 12"

VANCOUVER HARBOUR VFR TERMINAL PROCEDURES CHART - WESTBOUNDS**ARRIVALS**

Fly downwind as depicted, 1000 ASL or BLW or as assigned. Expect alt restriction E/W of BSM. E of BSM may widen out for base turn or as instructed by ATC.

CBC7: Follow ARRIVALS pro.

DEPARTURES

NW: Pass W of BSM, expect alt restriction passing abeam Sulphur Pile. Join published outbound rte at Lions Gate at 1000 ASL unless otherwise cleared by ATC.

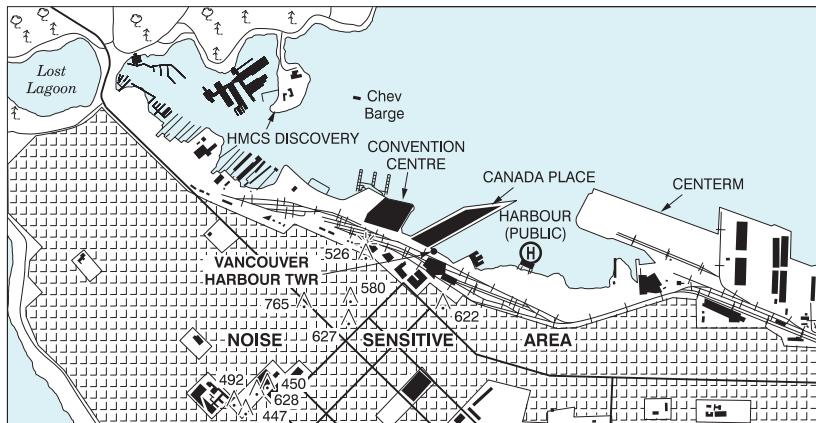
W: Inform ATC of intentions to dep W, expect ATC instructions for joining outbound rte.

Caution: Strong turbulence over Stanley Park.

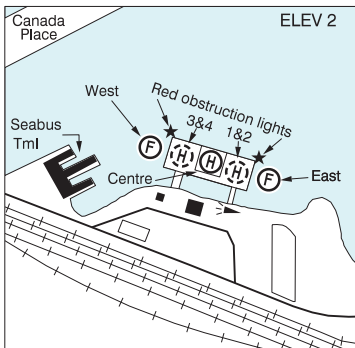
CBC7: Follow **NW** pro in all conditions ensuring fit path W of BSM.

VANCOUVER / HARBOUR (PUBLIC) BC (Heli)

CBC7



REF	N49 17 13 W123 06 22 Adj N 17°E (2014) UTC-8(7) Elev 2' VTA A5004 CAP RCAP
OPR	Pacific Heliport Services 604-688-4646 Fax 604-682-1478 Cert Ldg fees PN
PF	B-1 C-1,2,3,4,5,6
FLT PLN	
FIG	Kamloops 866-WXBRIEF (Toll free within Canada) or 866-541-4101 (Toll free within Canada & USA)
ACC	IFR 604-586-4590/4591 or 800-668-1333; IFR tng flts PPR ctc 604-586-4592 or 800-668-1333.
WX	LWIS H24 LAWO 15-02Z± or til 1/2 hr after SS, whichever is later.



SERVICES	1430-0330Z± Mon-Fri, 15-03Z± Sat-Sun & hol(s) exc clsd Dec 25
FUEL	JA-1 (FSII avbl)
S	1,6
HELI DATA	FATO/TLOF CENTRE 90' x 90' CONC Safety Area 120' x 120' 30,000 lbs FATO WEST 149' x 149' non-supporting Safety Area 198' x 198' FATO EAST 149' x 149' non-supporting Safety Area 198' x 198' PAD-1 52' dia CONC 50,000 lbs PAD-2 52' dia CONC 50,000 lbs PAD-3 52' dia CONC 30,000 lbs PAD-4 44' dia CONC 30,000 lbs Heli in excess of 60' overall length PPR. (CAR 602.96)
APRON	Prkg fees; ctc opr
RCR	Opr
LIGHTING	RW(LO) green LED ARCAL-118.4 type J, RR around deck.

BRITISH COLUMBIA

AERODROME / FACILITY DIRECTORY

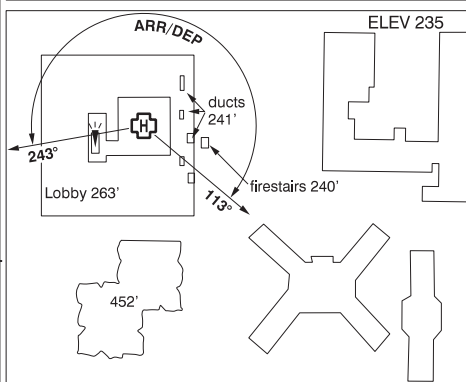
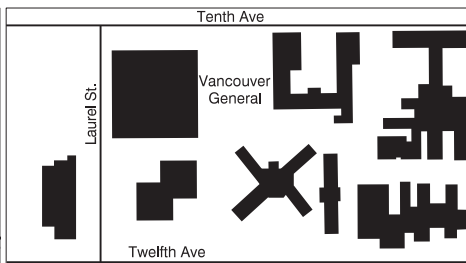
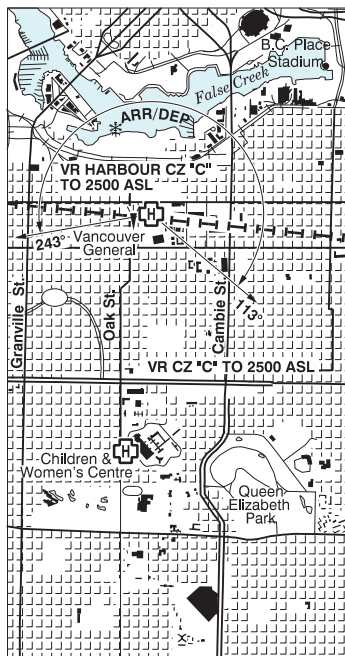
VANCOUVER / HARBOUR (PUBLIC) BC (Heli) (Cont'd)

CBC7

COMM	<p>RCO Pacific rdo 123.15 (FISE)</p> <p>ATIS Vancouver Harbour 126.8 dur twr hrs of ops</p> <p>CLNC DEL Vancouver Harbour 125.35 all dep acft ctc clnc del only if instructed to do so on ATIS</p> <p>TWR Vancouver Harbour 118.4 (V) 15-02Z± or til 1/2 hr after SS, whichever is later. (emerg only 604-688-9254)</p> <p>ATF tfc 118.4 when TWR clsd within Vancouver Harbour CZ shape irregular 2500 ASL.</p> <p>TML 125.2</p> <p>ARR 128.6</p> <p>DEP 126.125</p> <p>UNICOM 122.35 1430-0330Z± Mon-Fri, 15-03Z± Sat-Sun</p>
PRO	<p>During TWR hrs of operation, see VANCOUVER HARBOUR BC (water aerodrome) entry in CFS for detailed arr/dep procedures.</p> <p>5 min prior to ldg and prior to CZ entry ctc Opr on 122.35 for prkg instructions and advise acft type and number of persons on board.</p> <p>Arr/dep over water.</p> <p>DAY: Wind & tfc permitting arr/dep via FATO (marked triangle) arr/dep 351° to 017° fr heli, slope 8% (H3). O/T via unmarked hover areas over water immediately E & W of helipad.</p> <p>NIGHT: Arr/dep via FATO (marked triangle) arr/dep 351° to 017° fr heli, slope 8 (H3).</p> <p>No stopping on FATO unless no pad available. Pedestrians must remain clear of FATO/TLOF unless escorted by Pacific Heliport Services staff.</p> <p>No maneuvering to/from or on heliport when paramedics attending helicopters.</p> <p>Procedures for crossing the southern Strait of Georgia within Tml Class C airspace refer to Vancouver Intl, VTPC for Crossing the Southern Strait of Georgia. See Vancouver VTA for VFR low level routes.</p> <p>ATS REQUIREMENTS:</p> <p>All VFR acft arriving, departing or transiting the Vancouver or Victoria Tower Class C or D airspace require a transponder code.</p> <ul style="list-style-type: none"> - All acft departing Vancouver or Victoria Intl (including Water Aerodrome) call Kamloops FIC at 866-541-4101 or PAC RDO 125.85 for code assignment at least 30 min prior to flight or file a VFR Flight Plan/Flight Itinerary. - All acft arriving Vancouver, Victoria Intl (including Water Aerodrome) or transiting Vancouver or Victoria Control Zones obtain a code from one of the following ATS units: Vancouver Harbour, Nanaimo, Victoria Harbour, Boundary Bay, Langley, Abbotsford or Pitt Meadows or call Kamloops FIC at 866-541-4101 or PAC RDO 125.85. - All acft arriving Victoria Intl from a non NAV CANADA site call Kamloops FIC at 866-541-4101 or PAC RDO 125.85 for code assignment at least 30 minutes prior to flight or file a VFR Flight Plan / Flight Itinerary.
CAUTION	Remain clear of seabus tfc.

VANCOUVER (GEN HOSP) BC (Heli)

CBK4



REF	N49 15 43 W123 07 28 17°E (2014) UTC-8(7) Elev 235' VTA A5004
OPR	Vancouver Coastal Health 604-214-7337 Cert PPR
PF	B-1,2,4 C-3,5,6
FLT PLN	FIG Kamloops 866-WXBRIEF (Toll free within Canada) or 866-541-4101 (Toll free within Canada & USA)
HELI DATA	FATO 86' x 86' CONC TLOF 73' x 73' CONC elevated Safety Area 115' dia 18,000 lbs Max heli overall length 57.4' (CAR 602.96)
RCR	Opr
LIGHTING	RY(ME) green LED ARCAL-123.2 type K
COMM	ATIS Vancouver Harbour 126.8 dur twr hrs of ops CLNC DEL Vancouver Harbour 125.35 all dep acct ctc clnc del only if instructed to do so on ATIS TWR Vancouver Harbour 118.4 (V) 15-02Z† or til 1/2 hr after SS, whichever is later, O/T t/c Vancouver Harbour CZ shape irregular 2500 ASL. A/G Hosp Security 158.76 FM 3 min PN
PRO	Arr/dep 243° to 113° fr heli (H1) (CAR 602.96).

