

---

# FLIGHT PLAN & SITE SURVEY

---

A 612-4624 CALGARY RADIO CONTROL SOARING  
SOCIETY- DEWINTON

May 22, 2026



## IMPORTANT NOTICE

Please ensure you have received all required authorizations prior to flight. This Site Survey was created using RPAS Wilco. The user accepts all responsibility for the accuracy of the information.

Terms & Conditions: [rpaswilco.com/#tnc](https://rpaswilco.com/#tnc)

# Mission Information

A 612-4624 CALGARY RADIO CONTROL SOARING SOCIETY- DEWINTON

## FLIGHT DETAILS

Reference No:	<b>MAAC-612-4624</b>
Project Name:	<b>CALGARY RADIO CONTROL SOARING SOCIETY</b>
Pilot Name:	<b>MAAC</b>
Pilot Certificate:	
Mission Type:	<b>VLOS</b>
Flight Start:	<b>May 22, 2026 08:37 PM</b>
Flight End:	<b>May 22, 2026 09:37 PM</b>

## LOCATION DETAILS

Flight Address:	<b>DEWINTON</b>
Latitude:	<b>50° 49' 10.60" N ( 50.82 )</b>
Longitude:	<b>113° 49' 7.40" W ( -113.819 )</b>
Field Elevation:	<b>3350 ft MSL</b>
Altitude / Radius:	<b>400 ft / 926 m ( 0.5 nm )</b>
Classification:	<b>UNCONTROLLED</b>
FIR / Contact:	<b>CZEG / 780-890-8397</b>

## REPORT CONTENTS

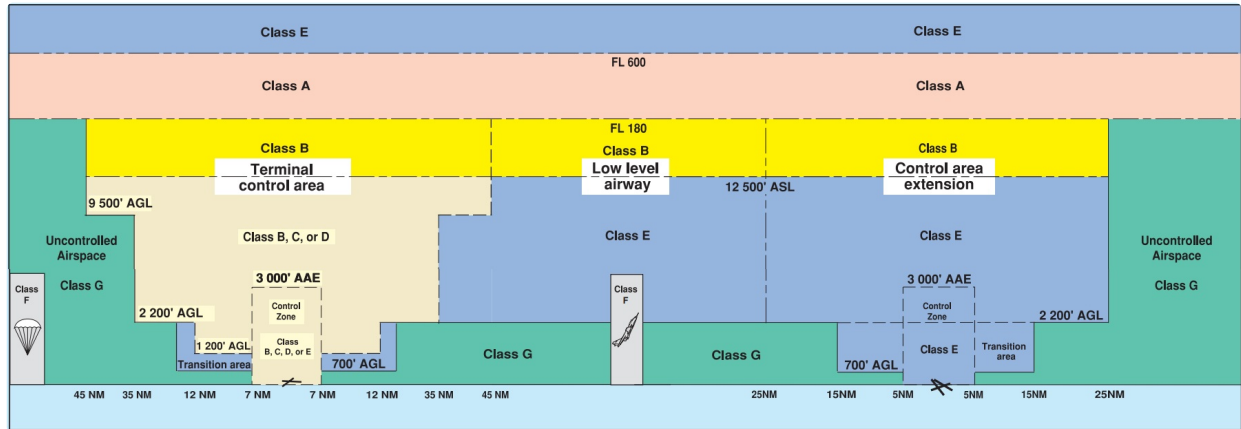
Site Survey • Obstacles (if available) • Nearby Aerodromes • Canadian Aviation Regulations • GFA • Aerodrome Supplements • METAR & TAF • NOTAMs • CFS



# Airspace Classification

MISSION LOCATION SURVEY

## AIRSPACE MAP



## OVERLYING AIRSPACES

Class	Name	Floor	Ceiling
E	Calgary, AB a) [CAE]	5800MSL	18000MSL
B	Calgary, AB a) [TCA]	12500MSL	18000MSL
C	Calgary, AB b) [TCA]	8000MSL	12500MSL
C	Calgary, AB c) [TCA]	5500AGL	8000MSL
C	Calgary, AB d) [TCA]	4800AGL	18000MSL
E	V112 VHF/UHF Airway	2200AGL	18000MSL
E	T727 Fixed RNAV Route	2200AGL	18000MSL
F	CYA263 (S) BLACK DIAMOND, AB	SFC	8000MSL

## NEAREST AERODROMES & DISTANCE FROM OPERATION

SOUTH CALGARY (CEH4 - AERODROME - Reg)	Lat: 50.822	Long: -113.824	0.462KM	0.249NM	NW
DE WINTON (HIGHWOOD) (CED6 - HELIPORT - Reg)	Lat: 50.803	Long: -113.893	5.519KM	2.98NM	W
WINTERS AIRE PARK (CFY4 - AERODROME - Reg)	Lat: 50.9	Long: -113.784	9.262KM	5.001NM	N

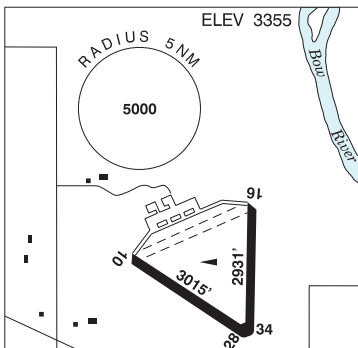
**ALBERTA**

**AERODROME / FACILITY DIRECTORY**

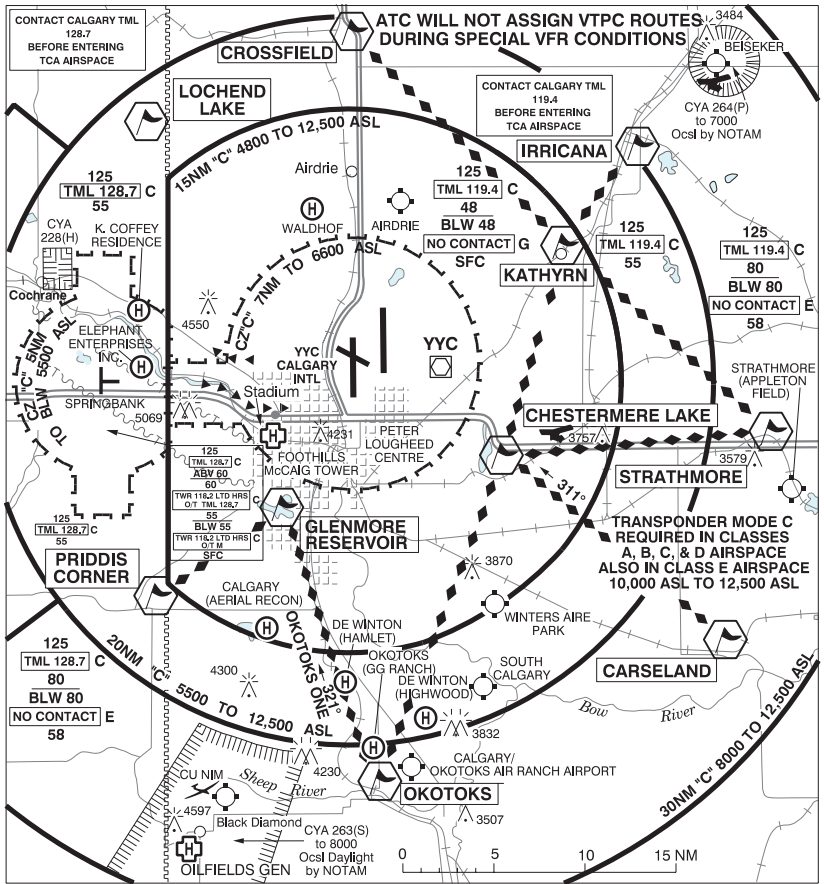
**DE WINTON / SOUTH CALGARY AB**

**CEH4**

<b>REF</b>	N50 49 19 W113 49 28 7E 15°E (2012) UTC-7(6) Elev 3355' VTA A5005
<b>OPR</b>	Cordillera Petroleum of Canada Ltd 403-243-5326 Reg PPR
<b>PF</b>	D-1,2,3,4,5,6
<b>FLT PLN</b>	
<b>FIC</b>	Edmonton 866-WXBRIEF (Toll free within Canada) or 866-541-4102 (Toll free within Canada & USA)
<b>ACC</b>	Edmonton IFR 888-358-7526
<b>RWY DATA</b>	Rwy 10/28 3015x150 asphalt Rwy 16/34 2931x150 asphalt
<b>RCR</b>	Opr No win maint
<b>COMM</b>	
<b>ATF</b>	UNICOM ltd hrs O/T tfc 122.8 5NM 6400 ASL
<b>CAUTION</b>	Rwy 10/28 and 16/34 sfcs deteriorating.



**CALGARY VFR TERMINAL PROCEDURES CHART**



## ALBERTA

## AERODROME / FACILITY DIRECTORY

**DE WINTON (HIGHWOOD) AB (Heli)**

CED6

<b>REF</b>	N50 48 11 W113 53 34 5ESE 14°E (2014) UTC-7(6) Elev 3435' VTA A5005	
<b>OPR</b>	2124068 Alberta Ltd 403-938-1855 Reg PPR	
<b>PF</b>	B-1 C-2,3,4,5,6	
<b>FLT PLN</b>		
<b>FIC</b>	Edmonton 866-WXBRIEF (Toll free within Canada) or 866-541-4102 (Toll free within Canada & USA)	
<b>ACC</b>	Edmonton IFR 888-358-7526	
<b>HELI DATA</b>	100'X125' CONC/GRASS	
<b>RCR</b>	Opr	
<b>COMM</b>		
<b>ATF</b>	UNICOM ltd hrs O/T tfc 122.8 5NM 6500 ASL	
<b>PRO</b>	Arr/Dep btwn 075°-115° fr heli	

**ALBERTA**

**AERODROME / FACILITY DIRECTORY**

**INDUS / WINTERS AIRE PARK AB**

**CFY4**

<b>REF</b>	N50 54 W113 47 1SW 15°E (2012) UTC-7(6) Elev 3370' VTA A5005
<b>OPR</b>	Blue Yonder Avn 403-936-5767 Reg PPR
<b>PF</b>	B-1 D-2,3,4,5,6
<b>FLT PLN</b>	
<b>FIC</b>	Edmonton 866-WXBRIEF (Toll free within Canada) or 866-541-4102 (Toll free within Canada & USA)
<b>ACC</b>	Edmonton IFR 888-358-7526
<b>SERVICES</b>	
<b>FUEL</b>	MG-1
<b>S</b>	1,2
<b>RWY DATA</b>	Rwy 09(096°)/27(276°) 2600x75 GRASS Rwy 16(165°)/34(345°) 2600x75 GRASS
<b>RCR</b>	Opr Ltd maint, sfc ruf.
<b>COMM</b>	
<b>ATF</b>	tfc 123.2 5NM 4800 ASL

ELEV 3370

