
FLIGHT PLAN & SITE SURVEY

C 630-4656 PRINCETON R/C JET FLIERS- PRINCETON Jet
Modellers Field

May 22, 2026



IMPORTANT NOTICE

Please ensure you have received all required authorizations prior to flight. This Site Survey was created using RPAS Wilco. The user accepts all responsibility for the accuracy of the information.

Terms & Conditions: rpaswilco.com/#tnc

Mission Information

C 630-4656 PRINCETON R/C JET FLIERS- PRINCETON JET MODELLERS FIELD

FLIGHT DETAILS

Reference No:	MAAC-630-4656
Project Name:	PRINCETON R/C JET FLIERS
Pilot Name:	MAAC
Pilot Certificate:	
Mission Type:	VLOS
Flight Start:	May 22, 2026 07:37 PM
Flight End:	May 22, 2026 08:37 PM

LOCATION DETAILS

Flight Address:	PRINCETON Jet Modellers Field
Latitude:	49° 28' 5.84" N (49.468)
Longitude:	120° 30' 28.84" W (-120.508)
Field Elevation:	2270 ft MSL
Altitude / Radius:	400 ft / 926 m (0.5 nm)
Classification:	UNCONTROLLED
FIR / Contact:	CZVR / 604-586-4500

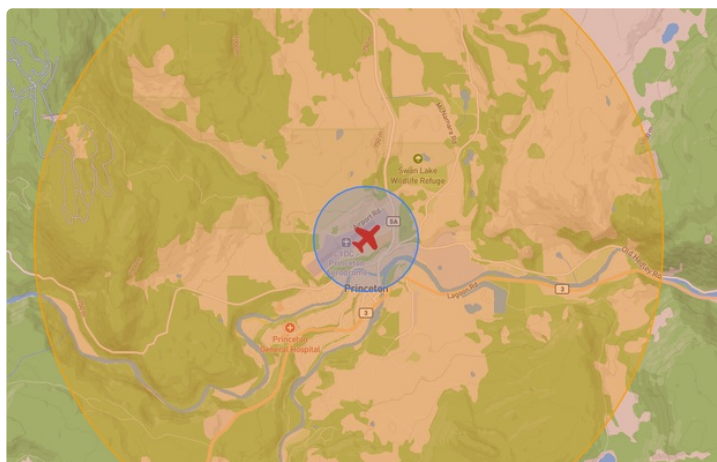
REPORT CONTENTS

Site Survey • Obstacles (if available) • Nearby Aerodromes • Canadian Aviation Regulations • GFA • Aerodrome Supplements • METAR & TAF • NOTAMs • CFS




Flight Map & MODEL Details

MISSION LOCATION SURVEY

FLIGHT AREA MAP



MISSION LOCATION DETAILS

ROLE	LATITUDE	LONGITUDE
 MODEL	49° 28' 5.84" N 49.468	120° 30' 28.84" W -120.508
 Pilot		
 Payload Op.		
 Observer		

Airspace Classification

MISSION LOCATION SURVEY

AIRSPACE MAP



OVERLYING AIRSPACES

Class	Name	Floor	Ceiling
E	Princeton, BC [CAE]	2200AGL	18000MSL
E	T695 Fixed RNAV Route	2200AGL	18000MSL
E	T801 Fixed RNAV Route	2200AGL	18000MSL
E	Princeton, BC [TA]	700AGL	18000MSL
E	3.1.2-48 [CAE]	9000AGL	18000MSL
E	T646 Fixed RNAV Route	2200AGL	18000MSL
E	T703 Fixed RNAV Route	2200AGL	18000MSL
E	Princeton, BC [CZ]	SFC	3000GND
E	T701-2 Fixed RNAV Route	2200AGL	18000MSL
E	Penticton, BC [CAE]	2200AGL	18000MSL
E	T800 Fixed RNAV Route	2200AGL	18000MSL
E	V369 VHF/UHF Airway	2200AGL	18000MSL
E	V342-1 VHF/UHF Airway	2200AGL	18000MSL

NEAREST AERODROMES & DISTANCE FROM OPERATION

PRINCETON (CYDC - AERODROME - Reg)	Lat: 49.468	Long: -120.512	0.31KM	0.167NM	W
PENTICTON (CYYF - AERODROME - Cert)	Lat: 49.463	Long: -119.602	65.461KM	35.346NM	E
PENTICTON REGIONAL HOSPITAL (CPH6 - HELIPORT - Cert)	Lat: 49.482	Long: -119.576	67.348KM	36.365NM	E

BRITISH COLUMBIA

AERODROME / FACILITY DIRECTORY

PRINCETON BC

CYDC

REF	N49 28 04 W120 30 45 Adj N 16°E (2019) UTC-8(7) Elev 2302' A5004 LO2 HI3 CAP	
OPR	Town 250-295-3135 or 250-273-0095 Reg	
PF	A-1 C-2,3,4,5	
FLT PLN	FIG Kamloops 866-WXBRIEF (Toll free within Canada) or 866-541-4101 (Toll free within Canada & USA) WX METAR 15-01Z (DT 13-01Z) O/T LWIS Tml Advsy fcst incl in VFR rte fcst (dur DT only), issue times: 14, 17, 20, 23Z.	
SERVICES		
FUEL S	100LL, JA 5	
RWY DATA RCR	Rwy 04(038°)/22(218°) 3932x75 ASPH AGN II Opr Ltd win maint. PCN	
LIGHTING	04-AS(TE ME) P1, 22-AS(TE ME) P1 3.5° ARCAL-123.2 type K	
COMM	RCO Pacific rdo 125.85 (FISE) 126.7 (bcst) ATF tfc 123.2 5NM 5300 ASL PAL Vancouver Ctr 135.0 351.3	
NAV	NDB DC 326 (M) N49 28 10 W120 31 00 VOR/DME YDC 113.9 Ch 86 N49 22 54 W120 22 26 (5335')	
PRO	Rgt hand circuits Rwy 04.	
CAUTION	5' ditch 300' W Thld 04.	

BRITISH COLUMBIA

AERODROME / FACILITY DIRECTORY

PENTICTON BC

CYFF

REF	N49 27 45 W119 36 08 1.8SW 16°E (2015) UTC-8(7) Elev 1130' A5004 A5005 LO2 HI3 CAP RCAP	
OPR	TC APM 250-809-4596 Admin 250-770-4422 1600-0030Z† Mon-Fri exc hols H24 Cert	
PF	A-2,3,6,7,8 B-5 C-4	
CUST	AOE/30 (120 with staged off-loading) CANPASS 1-888-226-7277 1630-0030Z† Mon-Fri	
FLT PLN	<p>FIC Kamloops 866-WXBRIEF (Toll free within Canada) or 866-541-4101 (Toll free within Canada & USA)</p> <p>WX METAR H24. TAF H24, issue times: 01, 07, 13, 19Z.</p>	
SERVICES	<p>FUEL 100LL, JA-1 14-05Z† Mon-Fri 15-04Z† Sat-Sun</p> <p>OIL 80, 100, 120, 15W50</p> <p>S 1,2</p> <p>JASU CE15 Executive Aviation 250-715-5345</p> <p>MILCON Executive Flight Centre Fuel 250-493-5323</p>	
RWY DATA	Rwy 16(165°)/34(345°) 6000x149 ASPH Thld 34 displ 300'.	
RWY CERT	Rwy 16/34 AGN IIIB	
APRON	GA prkg on apron N of tml only. Park on N and NE edges. Non-wheeled heli prkg avbl on grass N of main apron. Itinerant pilot and pax access via Gate 88. Lgt acct prkg avbl off Twy A, S end. PPR required for all prkg - request via yyf.vortexcms.com/ppr . Prkg fees. Wildfire Heli Ops: Staging and extended prkg on grass N of tml and maint fac, and S of Air Tanker Base along W fence. Apron II: Pvt	
RCR	Opr Ltd win maint 15-01Z† Mon-Fri, 17Z† & 23Z† Sat-Sun & hols Nov 1-Mar 31, O/T 2 hr PN call out chg may be levied. CRFI, PCN	
LIGHTING	16-AO(TE ME) P2, 34-AS(TE ME) P2 PAPI limitation/restriction. PAPI Rwy 34 to be used only within 2NM of thld. ARCAL-118.5 type K avbl when FSS clsd.	
COMM	<p>RADIO 118.5 PTC avbl (V) (emerg only 250-492-3001)</p> <p>GND ADV 121.9 (emerg only 250-492-3001)</p> <p>MF rdo 118.5 5NM 4100 ASL (CAR 602.98)</p>	
NAV	<p>DME IYF 110.3 Ch 40 N49 27 09 W119 36 14 (1134')</p> <p>LOC IYF 110.3 (Rwy 16)</p>	

BRITISH COLUMBIA

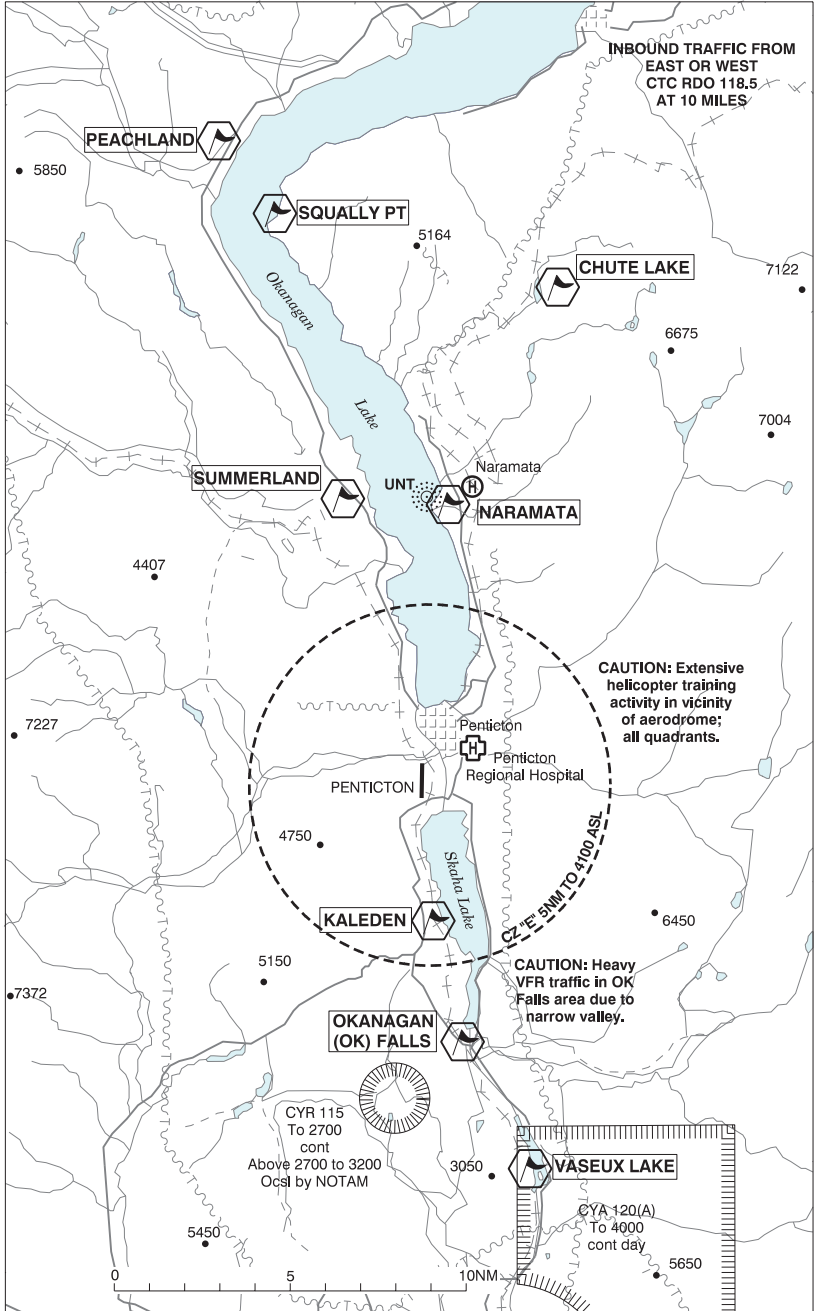
AERODROME / FACILITY DIRECTORY

PENTICTON BC (Cont'd)

CYYF

PRO	<p>Inbd tfc see VTPC; for night circuit pro see Night Circuit VTPC. Circuit hgt 2300 ASL. Rgt hand circuits Rwy 34 (CAR 602.96). Heli tng all quadrants, circuits E & W of A/D at 2300 ASL.</p> <p>GROUND ADVISORY: The Minister has authorized specific operating restrictions regarding communications intended for the MF, as well as the introduction of a Ground Advisory frequency (GND ADV) pursuant to CARs 602.97(2), 602.98(1) and 602.99.</p> <p>Departure procedure: Prior to taxi for departure; contact GND ADV on 121.9 for clearance and initial advisory information. After receiving initial advisory information, GND ADV will initiate communication transfer to RADIO on 118.5 prior to entering the runway/departure surface. Pilots are required to ascertain that there is no likelihood of collision with another aircraft or a vehicle prior to departure as stated in CAR 602.96 2a) and b).</p> <p>Arrival procedure: After exiting the runway/arrival surface and reporting clear on the radio frequency, pilots will be directed to contact GND ADV on 121.9 for ground traffic and taxiing information before entering the taxiway.</p>
CAUTION	<p>Only pilots familiar with local terrain should use this aprt dur hrs of darkness. Ngt ops not recommended unless all 7 hazard beacons oprg. Extv heli activity at A/D dur daylight hrs all quads. Due to high terrain, it is recommended pilots proceeding E or W under VFR, attain an alt of 5,000' (ASL) min before leaving the Okanagan Valley. Hi terrain reduces operational length of Rwy 34 PAPI. Extv bird activity in vic.</p>

PENTICTON VFR TERMINAL PROCEDURES CHART



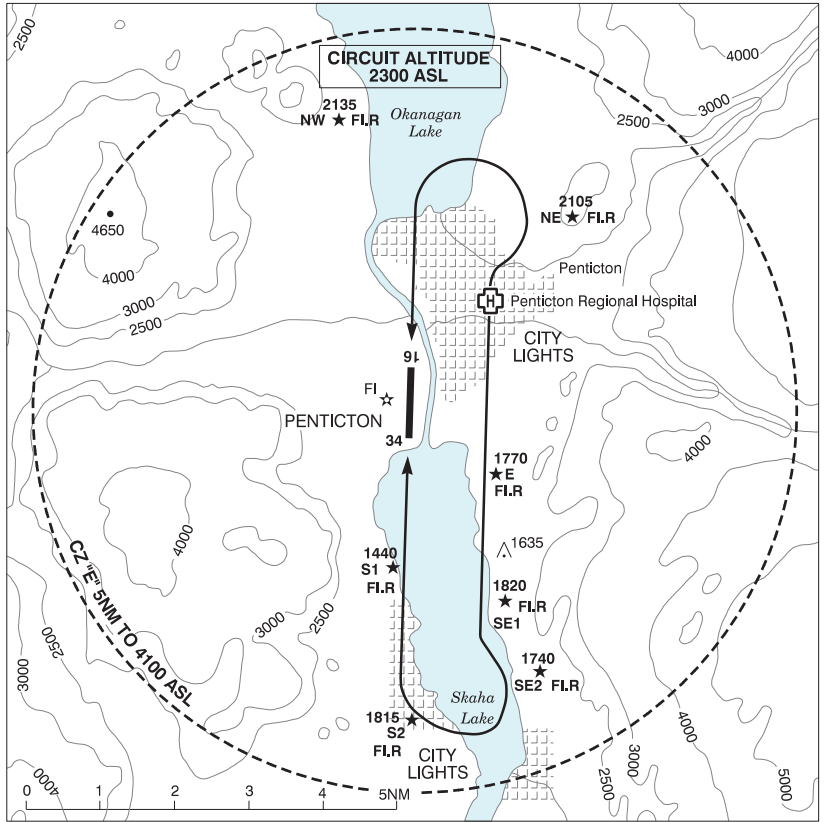
BRITISH COLUMBIA

AERODROME / FACILITY DIRECTORY

PENTICTON VFR TERMINAL PROCEDURES CHART (Cont'd)

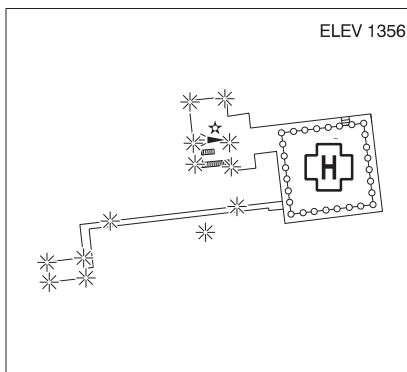
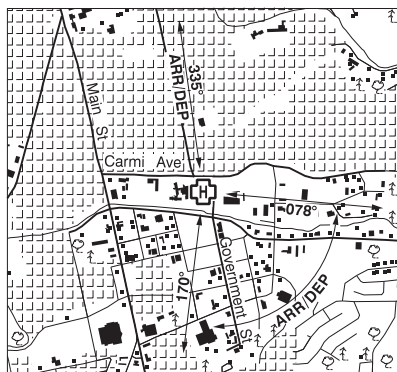
NAME	IDENT	LAT/LONG
KALEDEN	VCKLE	N49° 24' 00" W119° 36' 00"
NARAMATA	VCNAR	N49° 35' 50" W119° 36' 11"
OKANAGAN (OK) FALLS	VCOKN	N49° 20' 33" W119° 34' 08"
PEACHLAND	VCPCH	N49° 46' 00" W119° 43' 59"
SQUALLY PT	VCSQL	N49° 44' 00" W119° 43' 01"
SUMMERLAND	VCSML	N49° 36' 00" W119° 40' 01"
VASEUX LAKE	VCVAS	N49° 17' 00" W119° 31' 59"
CHUTE LAKE	VCCHL	N49° 41' 38" W119° 31' 52"

PENTICTON VFR TERMINAL PROCEDURES CHART - NIGHT CIRCUIT PROCEDURE



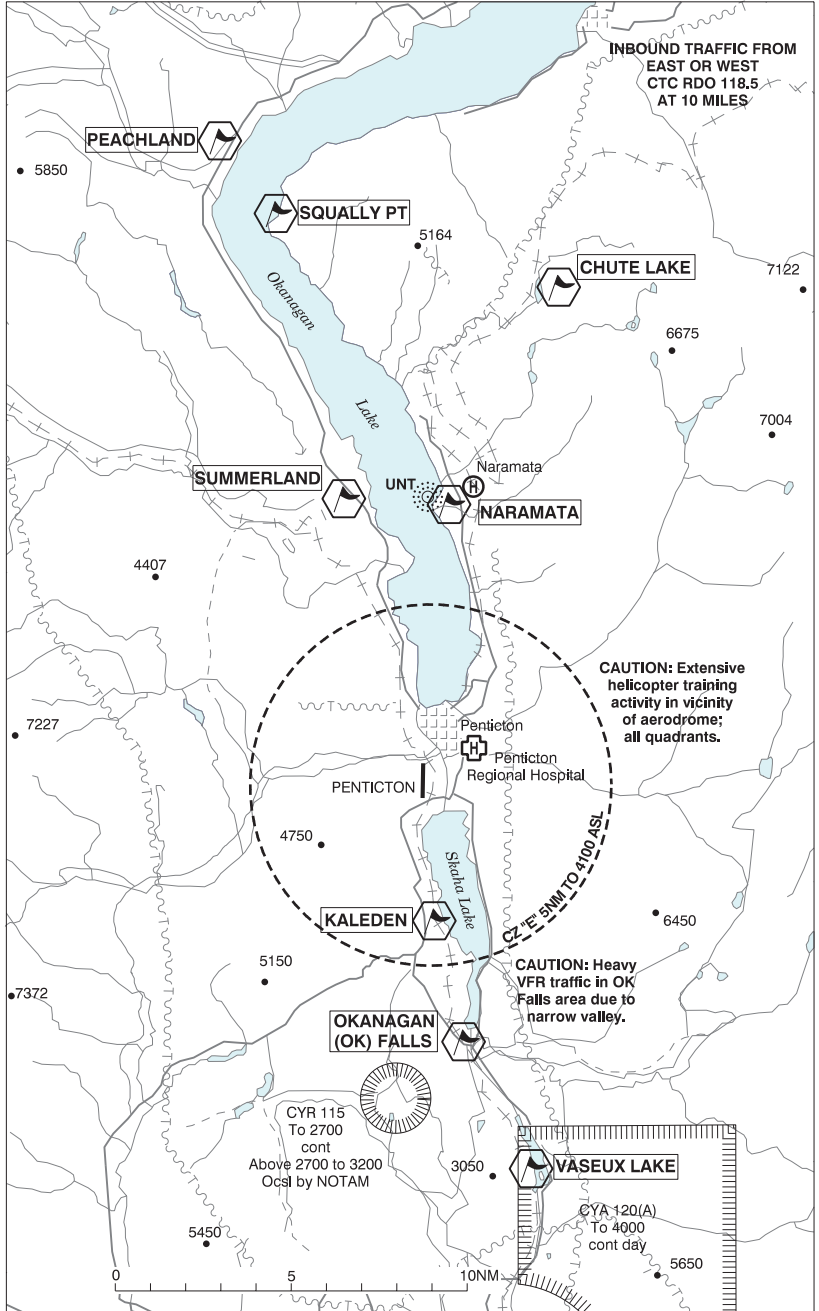
PENTICTON REGIONAL HOSPITAL BC (Heli)

CPH6



REF	N49 28 54 W119 34 34 Adj 17°E (2018) UTC-8(7) Elev 1356' A5004 A5005
OPR	Interior Health Authority 250-462-3785 Cert PPR
PF	B-1
FLT PLN	
FIG	Kamloops 866-WXBRIEF (Toll free within Canada) or 866-541-4101 (Toll free within Canada & USA)
HELI DATA	FATO 86' x 86' non-supporting TLOF 60' x 60' CONC Safety Area 115' x 115' 17,000 lbs Max heli overall length 57.4' (CAR 602.96). Elevated/rooftop heli.
RCR	Opr
LIGHTING	RY(ME) green LED ARCAL-123.2 type K
COMM	
MF	Penticton rdo 118.5 5NM 4100 ASL (CAR 602.98)
PRO	Arr/dep 335° fr heli (H1), day/night use (CAR 602.96) Arr/dep 078° to 170° fr heli (H1), day/night use (CAR 602.96)

PENTICTON VFR TERMINAL PROCEDURES CHART



BRITISH COLUMBIA

AERODROME / FACILITY DIRECTORY

PENTICTON VFR TERMINAL PROCEDURES CHART (Cont'd)

NAME	IDENT	LAT/LONG
KALEDEN	VCKLE	N49° 24' 00" W119° 36' 00"
NARAMATA	VCNAR	N49° 35' 50" W119° 36' 11"
OKANAGAN (OK) FALLS	VCOKN	N49° 20' 33" W119° 34' 08"
PEACHLAND	VCPCH	N49° 46' 00" W119° 43' 59"
SQUALLY PT	VCSQL	N49° 44' 00" W119° 43' 01"
SUMMERLAND	VCSML	N49° 36' 00" W119° 40' 01"
VASEUX LAKE	VCVAS	N49° 17' 00" W119° 31' 59"
CHUTE LAKE	VCCHL	N49° 41' 38" W119° 31' 52"

PENTICTON VFR TERMINAL PROCEDURES CHART - NIGHT CIRCUIT PROCEDURE

