

---

# FLIGHT PLAN & SITE SURVEY

---

N 633-4959 CLUB D'AVION TELEGUIDE D'ALMA- TERRAIN -  
2635 ROUTE DU LAC O ALMA

May 22, 2026



## IMPORTANT NOTICE

Please ensure you have received all required authorizations prior to flight. This Site Survey was created using RPAS Wilco. The user accepts all responsibility for the accuracy of the information.

Terms & Conditions: [rpswilco.com/#tnc](https://rpswilco.com/#tnc)

# Mission Information

N 633-4959 CLUB D'AVION TELEGUIDE D'ALMA- TERRAIN - 2635 ROUTE DU LAC O ALMA

## FLIGHT DETAILS

Reference No:	<b>MAAC-633-4959</b>
Project Name:	<b>CLUB D'AVION TELEGUIDE D'ALMA</b>
Pilot Name:	<b>MAAC</b>
Pilot Certificate:	
Mission Type:	<b>VLOS</b>
Flight Start:	<b>May 22, 2026 10:40 PM</b>
Flight End:	<b>May 22, 2026 11:40 PM</b>

## LOCATION DETAILS

Flight Address:	<b>TERRAIN - 2635 ROUTE DU LAC O ALMA</b>
Latitude:	<b>48° 31' 53.62" N ( 48.532 )</b>
Longitude:	<b>71° 42' 20.95" W ( -71.706 )</b>
Field Elevation:	<b>371 ft MSL</b>
Altitude / Radius:	<b>400 ft / 926 m ( 0.5 nm )</b>
Classification:	<b>UNCONTROLLED</b>
FIR / Contact:	<b>CZUL / 514-633-3365</b>

## REPORT CONTENTS

Site Survey • Obstacles (if available) • Nearby Aerodromes • Canadian Aviation Regulations • GFA • Aerodrome Supplements • METAR & TAF • NOTAMs • CFS



# Airspace Classification

MISSION LOCATION SURVEY

## AIRSPACE MAP



## OVERLYING AIRSPACES

Class	Name	Floor	Ceiling
E	Bagotville, QC e) [TCA]	700AGL	18000MSL
E	Roberval, QC [CAE]	2200AGL	18000MSL
E	T699 Fixed RNAV Route	2200AGL	18000MSL
F	CYR653 ALMA, QC	2000MSL	8000MSL
F	CYR652 ALMA, QC	3500MSL	12500MSL
F	CYR651 ALMA, QC	SFC	6000MSL
F	CYR656 ALMA, QC	SFC	2000MSL
F	CYR655 ALMA, QC	SFC	2000MSL
F	CYR654 ALMA, QC	SFC	2000MSL
E	Roberval, QC [TA]	700AGL	18000MSL

## NEAREST AERODROMES & DISTANCE FROM OPERATION

ALMA (CYTF - AERODROME - Cert)	Lat: 48.508	Long: -71.641	5.421KM	2.927NM	SE
ALMA (RIVIERE LA GRANDE DECHARGE) (CGD2 - WATERDROME - Reg)	Lat: 48.563	Long: -71.616	7.507KM	4.053NM	NE
ST-CHARLES-DE-BOURGET (CSA5 - WATERDROME - Reg)	Lat: 48.509	Long: -71.464	17.987KM	9.712NM	E

## QUEBEC

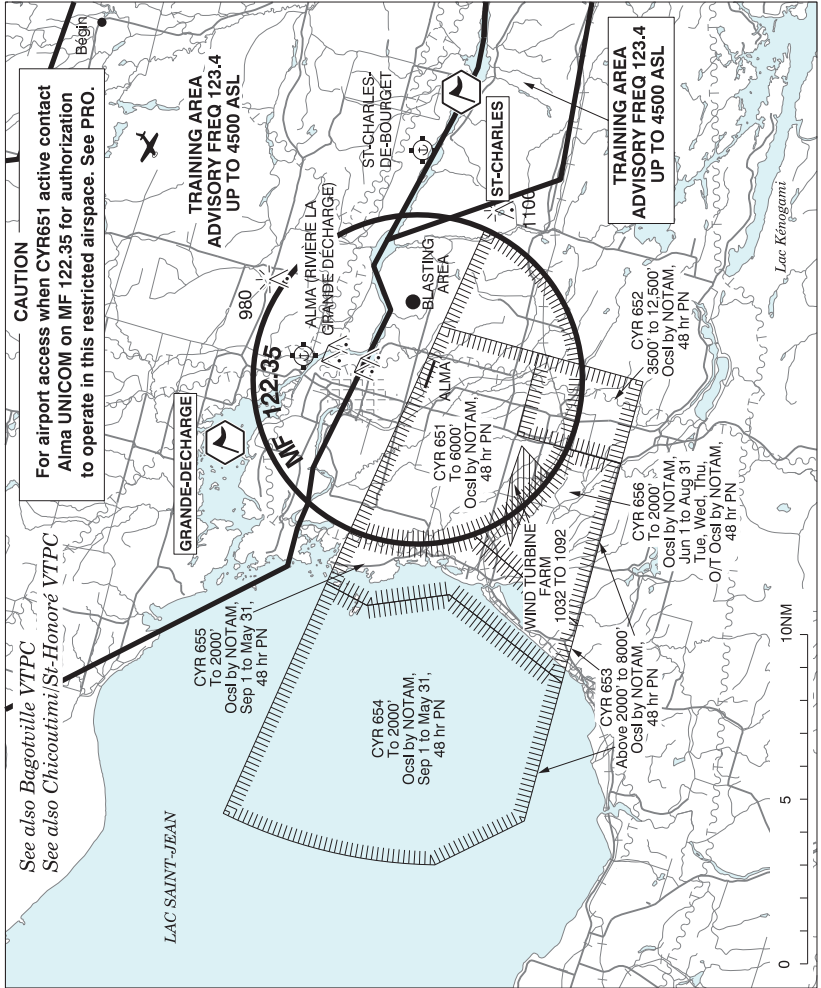
## AERODROME / FACILITY DIRECTORY

## ALMA QC

CYTF

<b>REF</b>	N48 30 31 W71 38 29 2.2S 17°W (2014) UTC-5(4) Elev 448' A5010 LO6 LO7 HI5 HI6 CAP	
<b>OPR</b>	Développement Économique Alma Lac Saint-Jean 418-669-5104 13-21Z‡ Mon-Fri Cert Ldg fees, tml fees	
<b>PF</b>	A-1,2,7 C-3,4,5,6	
<b>FLT PLN</b>	(bil)	
<b>FIC</b>	Québec 866-GOMÉTÉO or 866-WXBRIEF (Toll free within Canada) or 866-541-4105 (Toll free within Canada & USA)	
<b>ACC</b>	Montréal 800-633-1353	
<b>WX</b>	AUTO 418-669-5406 (see COMM)	
<b>SERVICES</b>	1230-2130Z‡ Mon-Fri exc hols, O/T 1 hr PN 418-480-8686. Call out chg may be levied for one or more svcs.	
<b>FUEL</b>	100LL (fuel management tml avbl, ctc opr to receive code), JA-1 (FSII avbl), SP	
<b>S</b>	1(Ltd),2,3,4,5,6	
<b>JASU</b>	Electric start 10/15	
<b>RWY DATA</b>	Rwy 13(131°)/31(311°) 5000x100 ASPH Rwy 31 down 0.37%	
<b>RWY CERT</b>	Rwy 13/31 AGN IIIA	
<b>TWY CERT</b>	Twy A AGN II	
<b>RCR</b>	Opr CRFI Win maint O/R 1530-2130Z‡ Mon-Fri exc hols, O/T 3 hrs PN 418-480-8686, call out chg may be levied. PCN	
<b>LIGHTING</b>	13-AO(TE ME), 31-AO(TE ME) ARCAL-122.35 type K	
<b>COMM</b>	(bil)	
<b>CLNC DEL</b>	Prior dep pilots must ctc Bagotville Tml for IFR clnc at 888-813-8508.	
<b>MF/ATF</b>	UNICOM 1330-2030Z‡ Mon-Fri, exc hols (CAR 602.98) O/T tfc 122.35 5NM 3500 ASL	
<b>TML</b>	Bagotville 127.2 227.6	
<b>VFR ADV</b>	Bagotville Tml 121.2	
<b>AUTO</b>	123.175	
<b>NAV</b>		
<b>DME</b>	ITF 110.7 Ch 44 N48 30 14 W71 37 47 (458')	
<b>LOC</b>	ITF 110.7 (Rwy 13)	
<b>PRO</b>	Several areas of Class F of restricted airspace (CYRs) have been established in the Alma area for flight testing of Remotely Piloted Aircraft (RPA). These CYRs are activated occasionally by NOTAM with 48 hours prior notice. No person shall operate an aircraft within an active CYR unless the flight has been authorized by the User Agency as stated in the Designated Airspace Handbook (DAH). When CYR651 is active and access to the Alma airport is required, to avoid delays pilots should make prior arrangements with the User Agency for authorization to operate within the CYR. Pilots can contact Alma UNICOM MF 122.35 for authorization but unless the flight is essential such as MEDEVAC, police, emergency, etc., access may be delayed. Once authorized, pilots must enter and exit CYR651 from the northeast and operations are restricted to circuit procedures for arrivals and departures from the airport only. See Alma VTTC for a depiction of the CYRs.	
<b>CAUTION</b>	Parachute jumps over apt to 12,500 ASL, (DT 12-24Z) May-Sep. Possible win maint eqpt on rwy outside ops hrs. Migratory bird activity Apr-Nov.	

**ALMA VFR TERMINAL PROCEDURES CHART**



NAME	IDENT	LAT/LONG
GRANDE-DECHARGE	VCGRD	N48° 36' 48" W071° 41' 00"
ST-CHARLES	VCSTC	N48° 29' 30" W071° 24' 30"

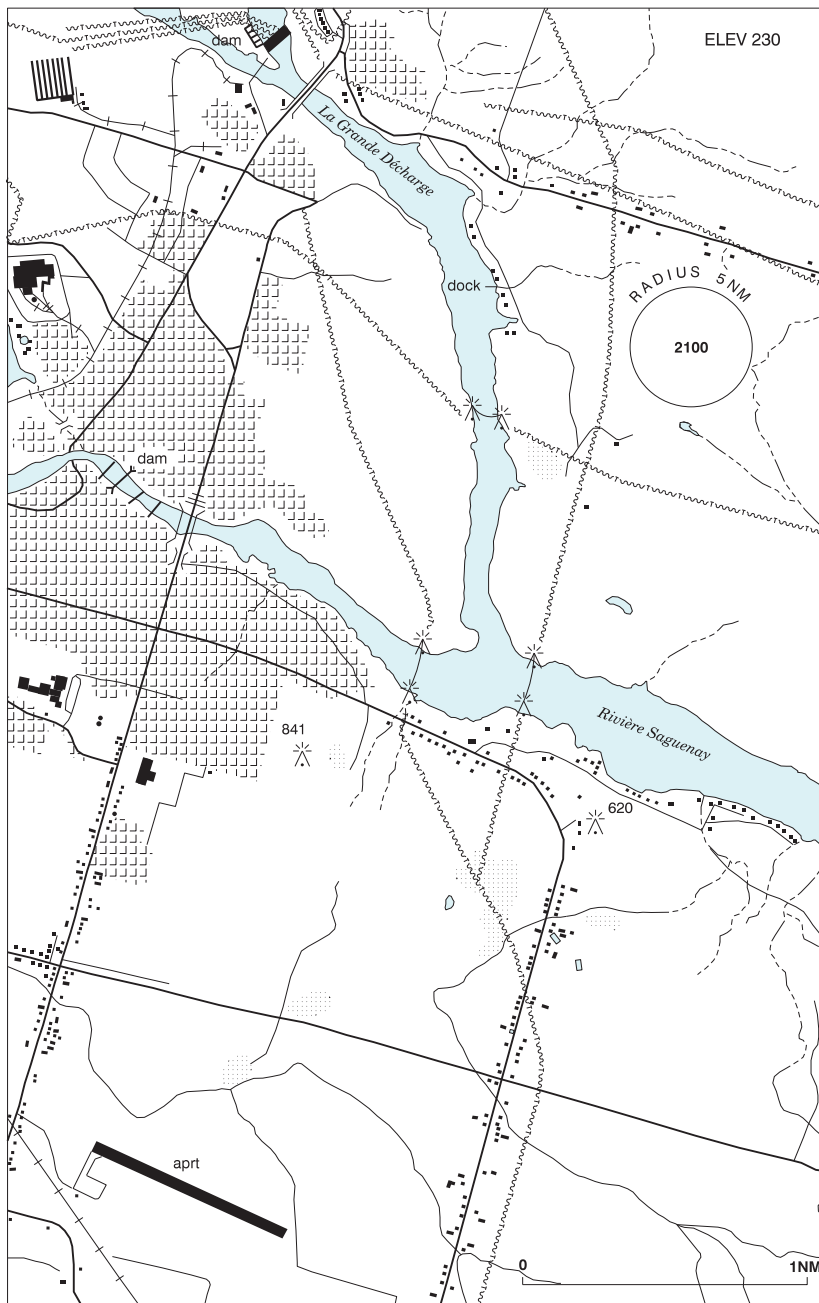
# CANADA WATER AERODROME SUPPLEMENT

Effective 0901Z 19 March 2026 to 0901Z 18 February 2027

AERODROME/FACILITY DIRECTORY B3

## ALMA (RIVIÈRE LA GRANDE DÉCHARGE) QC

CGD2



REF

N48 33 48 W71 36 57 1NE 17°W (2014) UTC-5(4) Elev 230' A5010

# CANADA WATER AERODROME SUPPLEMENT

Effective 0901Z 19 March 2026 to 0901Z 18 February 2027

## B4 AERODROME/FACILITY DIRECTORY

### ALMA (RIVIÈRE LA GRANDE DÉCHARGE) QC (Cont'd)

CGD2

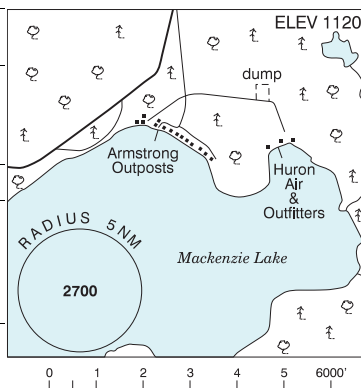
<b>OPR</b>	Air Maintenance/Martin Bouchard 418-668-9522/8745 Reg
<b>PF</b>	B-1 C-2,3,4,5
<b>FLT PLN</b>	(bil)
<b>FIC</b>	Québec 866-GOMÉTÉO or 866-WXBRIEF (Toll free within Canada) or 866-541-4105 (Toll free within Canada & USA)
<b>SERVICES</b>	
<b>OIL</b>	All
<b>S</b>	2,3
<b>A/D DATA</b>	Open water mid-Apr to mid-Nov. Bottom sand and mud.
<b>COMM</b>	
<b>MF/ATF</b>	UNICOM at land A/D 3.5NM SSW 1330-2030Z± Mon-Fri, exc hols (CAR 602.98) O/T tfc 122.35 5NM centred on land A/D 3.5NM SSW 3500 ASL
<b>VFR ADV</b>	(bil) Bagotville Tml 121.2
<b>CAUTION</b>	Ocsl small fishing boats.

### ALPORT BAY ON — See LAKE MUSKOKA / ALPORT BAY

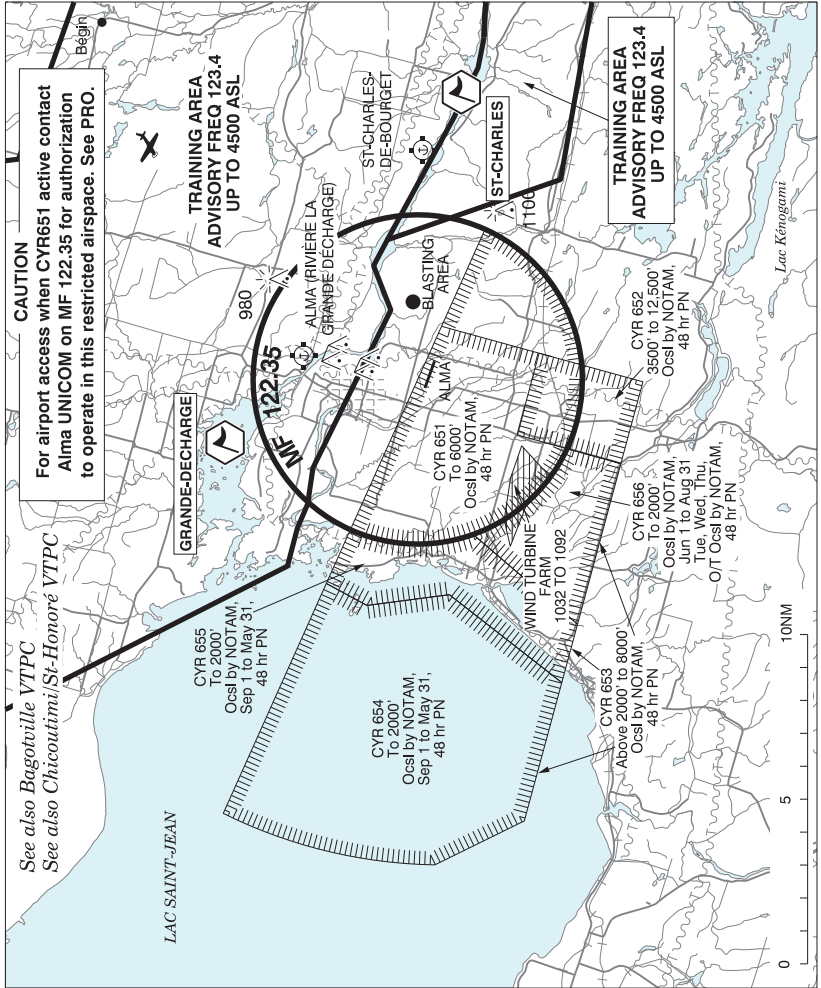
### ARMSTRONG ON

CJF6

<b>REF</b>	N50 15 W89 03 2S 4°W UTC-5(4) Elev 1120' A5008
<b>OPR</b>	Armstrong Outposts 807-583-2180 (sum), 807-767-0519 (win) Reg Huron Air & Outfitters 807-583-2051 Reg
<b>PF</b>	B-1 D-2,4,5
<b>FLT PLN</b>	Pilots to open/close VFR flt plan with London rdo, FISE or by phone
<b>FIC</b>	London 866-WXBRIEF (Toll free within Canada) or 866-541-4104 (Toll free within Canada & USA)
<b>SERVICES</b>	
<b>FUEL</b>	100LL
<b>OIL</b>	100, 15/50
<b>S</b>	5
<b>A/D DATA</b>	Open water mid May-Oct. Ski planes in win.
<b>COMM</b>	
<b>ATF</b>	tfc 122.8 5NM 4100 ASL



**ALMA VFR TERMINAL PROCEDURES CHART**



NAME	IDENT	LAT/LONG
GRANDE-DECHARGE	VCGRD	N48° 36' 48" W071° 41' 00"
ST-CHARLES	VCSTC	N48° 29' 30" W071° 24' 30"

# CANADA WATER AERODROME SUPPLEMENT

Effective 0901Z 19 March 2026 to 0901Z 18 February 2027

## B226 AERODROME/FACILITY DIRECTORY

### SAGUENAY (HARVEY) QC (Cont'd)

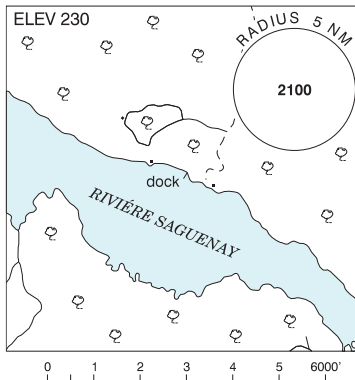
CSA8

<b>PRO</b>	<p>Refer to Bagotville VTPC</p> <p><b>Circuits:</b> Right hand circuits when ldg and tkof to E (CAR 602.96)</p> <p><b>Depart:</b> Obtain appr fr Bagotville TWR (418-677-4000 Ext 7507) at least 5 min before tkof. Broadcast intentions on 126.2 - Bagotville TWR before tkof.</p> <p>Remain at 1000 ASL or BLW until comm with Bagotville TWR is established; ctc TWR even if you leave the CZ at 1000 ASL or below.</p> <p>Avoid CYRC CZ north of the Saguenay River.</p>
<b>CAUTION</b>	<p>Marked P-lines aprx 250 ASL (110 AGL) 1.5NM E</p> <p>Frequent low alt heli activity E of Dubuc bridge</p>

### SAGUENAY / ST-CHARLES-DE-BOURGET QC

CSA5

<b>REF</b>	<p>N48 30 34 W71 27 50 5.8WNW</p> <p>St-Charles-de-Bourget 17°W (2014)</p> <p>UTC-5(4) Elev 230' A5010</p>
<b>OPR</b>	<p>Michel Guay 418-487-4071 Reg PN</p>
<b>PF</b>	<p>D-1,2,3,4,5,6</p>
<b>FLT PLN</b>	<p>(bil)</p>
<b>FIG</b>	<p>Québec 866-GOMÉTÉO or</p> <p>866-WXBRIEF (Toll free within Canada)</p> <p>or 866-541-4105 (Toll free within Canada &amp; USA)</p>
<b>SERVICES</b>	<p><b>S</b> 1,5,7</p>
<b>A/D DATA</b>	<p>Open water May-Nov. Sand and rock bottom. Dock depth 5'.</p>
<b>DOCKS</b>	<p>Ramp</p>
<b>COMM</b>	<p><b>ATF</b> tfc 123.4 5NM outside Alma MF area 3300 ASL</p> <p><b>VFR ADV</b> Bagotville Tml 121.2</p>
<b>CAUTION</b>	<p>Hvy tng zone N of river freq 123.4. Refer to Chicoutimi/St-Honoré VTPC.</p>



### SAKINAW LAKE SOUTH BC — See GARDEN BAY / SAKINAW LAKE SOUTH

### SALMON LAKE ON — See PARRY SOUND / SALMON LAKE