
FLIGHT PLAN & SITE SURVEY

A 642-5110 BLACK WIDOW SQUADRON FLYERS- BLACK
WIDOW SQUADRON FLYERS

May 22, 2026



IMPORTANT NOTICE

Please ensure you have received all required authorizations prior to flight. This Site Survey was created using RPAS Wilco. The user accepts all responsibility for the accuracy of the information.

Terms & Conditions: rpswilco.com/#tnc

Mission Information

A 642-5110 BLACK WIDOW SQUADRON FLYERS- BLACK WIDOW SQUADRON FLYERS

FLIGHT DETAILS

Reference No:	MAAC-642-5110
Project Name:	BLACK WIDOW SQUADRON FLYERS
Pilot Name:	MAAC
Pilot Certificate:	
Mission Type:	VLOS
Flight Start:	May 22, 2026 08:41 PM
Flight End:	May 22, 2026 09:41 PM

LOCATION DETAILS

Flight Address:	BLACK WIDOW SQUADRON FLYERS
Latitude:	53° 41' 43.40" N (53.695)
Longitude:	113° 42' 22.30" W (-113.706)
Field Elevation:	2267 ft MSL
Altitude / Radius:	400 ft / 926 m (0.5 nm)
Classification:	UNCONTROLLED
FIR / Contact:	CZEG / 780-890-8397

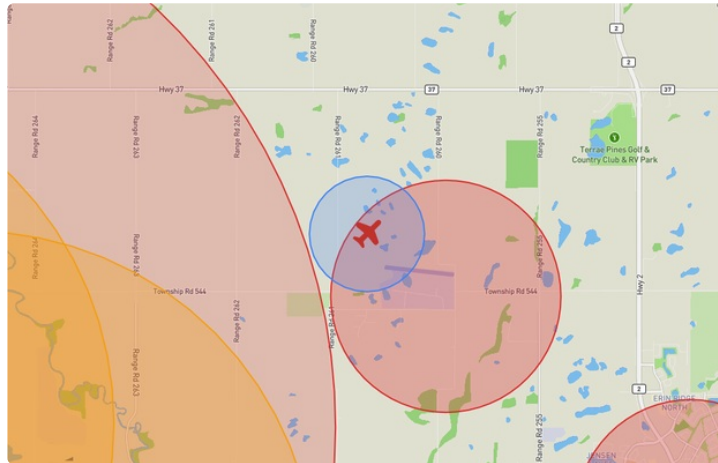
REPORT CONTENTS

Site Survey • Obstacles (if available) • Nearby Aerodromes • Canadian Aviation Regulations • GFA • Aerodrome Supplements • METAR & TAF • NOTAMs • CFS





Flight Map & MODEL Details

MISSION LOCATION SURVEY

FLIGHT AREA MAP



MISSION LOCATION DETAILS

ROLE	LATITUDE	LONGITUDE
 MODEL	53° 41' 43.40" N 53.695	113° 42' 22.30" W -113.706
 Pilot		
 Payload Op.		
 Observer		

Airspace Classification

MISSION LOCATION SURVEY

AIRSPACE MAP



OVERLYING AIRSPACES

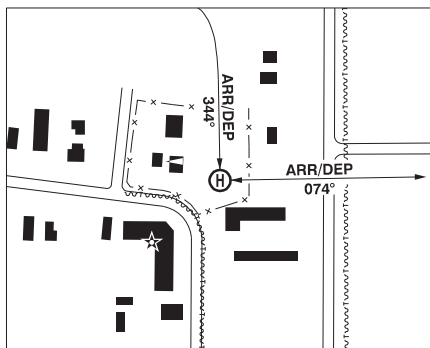
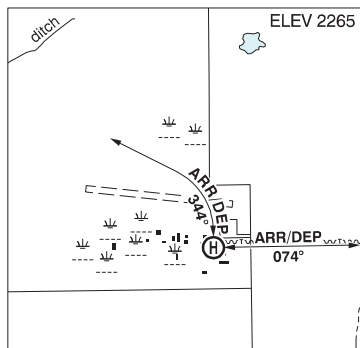
Class	Name	Floor	Ceiling
B	Edmonton, AB a) [CAE]	12500MSL	18000MSL
E	T682 Fixed RNAV Route	2200AGL	18000MSL
B	Edmonton, AB a) [TCA]	12500MSL	18000MSL
C	Edmonton, AB b) [TCA]	9500MSL	12500MSL
C	Edmonton, AB c) [TCA]	7000AGL	9500MSL
C	Edmonton, AB d) [TCA]	4600AGL	7000MSL
D	Villeneuve, AB [CZ]	SFC	4600MSL
E	Edmonton, AB c) [TA]	3000AGL	4100MSL
C	Edmonton, AB e) [TCA]	4100AGL	18000MSL
C	Edmonton, AB f) [TCA]	3400AGL	18000MSL
C	Edmonton, AB h) [TCA]	4100AGL	18000MSL
E	Edmonton, AB a) [TA]	3000AGL	18000MSL
C	Edmonton, AB g) [TCA]	3400AGL	4600MSL
E	Namao, AB (Heliport) [CZ]	SFC	4100MSL
F	CYR232 NAMAQ, AB	SFC	3000MSL
E	T639 Fixed RNAV Route	2200AGL	18000MSL
E	T812 Fixed RNAV Route	2200AGL	18000MSL
F	CYR233 NAMAQ, AB	SFC	3400MSL
E	Edmonton, AB e) [TA]	4600AGL	7000MSL
E	T747 Fixed RNAV Route	2200AGL	18000MSL

NEAREST AERODROMES & DISTANCE FROM OPERATION

ST. ALBERT (DELTA HELICOPTERS) (CES3 - HELIPORT - Cert)	Lat: 53.686	Long: -113.687	1.615KM	0.872NM	SE
VILLENEUVE (ROSE FIELD) (CRF3 - AERODROME - Reg)	Lat: 53.646	Long: -113.803	8.437KM	4.556NM	SW
VILLENEUVE (CZVL - AERODROME - Reg)	Lat: 53.668	Long: -113.852	10.086KM	5.446NM	W

EDMONTON / ST. ALBERT (DELTA HELICOPTERS) AB (Heli)

CES3



REF	N53 41 12 W113 41 14 3.5NW 15°E (2014) UTC-7(6) Elev 2265' VTA A5015
OPR	Delta Helicopters Ltd 780-458-3564 Cert PPR
PF	A-1 C-2,3,4,5,6
FLT PLN	<p>FIC Edmonton 866-WXBRIEF (Toll free within Canada) or 866-541-4102 (Toll free within Canada & USA)</p> <p>ACC Edmonton IFR 888-358-7526</p>
HELI DATA	FATO/TLOF 86' dia GRAVEL Safety Area 115' dia Max heli overall length 57'
RCR	Opr Daylight hrs
COMM	<p>ATF tfc 123.2 2NM 3400 ASL</p>
PRO	Arr/dep 074° & 344° curved fr heli, slope 8% (H3). Edmonton Intl Class C airspace 4600 ASL and above overlies A/D. TRANSPONDER MANDATORY - Acft operating in Edmonton Class C require a discrete transponder code which may be obtained by filing a flt pln or ctc 888-358-7526 at least 30 min prior to entering.
CAUTION	Power lines 131' SW & 492' E fr heli marked with ball markers.

ALBERTA

AERODROME / FACILITY DIRECTORY

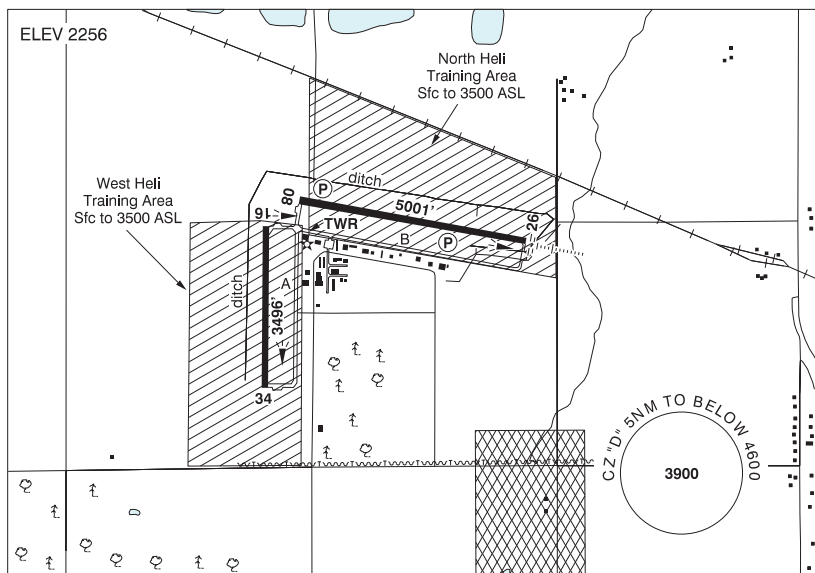
EDMONTON / VILLENEUVE (ROSE FIELD) AB

CRF3

REF	N53 38 44 W113 48 10 2SE 15°E (2012) UTC-7(6) Elev 2190' VTA A5015	
OPR	Simon A. Rose 587-879-3242 Reg PPR	
FLT PLN	FIC Edmonton 866-WXBRIEF (Toll free within Canada) or 866-541-4102 (Toll free within Canada & USA) ACC Edmonton IFR 888-358-7526	
RWY DATA	Rwy 07(072°)/25(252°) 2400X60 GRASS RCR Opr No wint maint Conditions subject to seasonal and/or climatic variations. Soft in spring.	
COMM	MF Villeneuve Tower 118.8 (V) 15-04Z† (emerg only 780-458-5828) ATF tfc 118.8 04-15Z† 5NM centred on Villeneuve A/D to below 4600 ASL	
PRO	Ctc Villeneuve Twr 118.8 5 miles and prior to tkof No tng fts or apchs.	
CAUTION	Watch for tfc on hwy 44 when landing Rwy 07 and dep Rwy 25. Note: Airport close to Edmonton/Villeneuve CZVL with similar rwy designations.	

EDMONTON / VILLENEUVE AB

CZVL



REF	N53 40 06 W113 51 08 1W 14°E (2020) UTC-7(6) Elev 2256' VTA A5015 LO1 LO2 HI3 T1 CAP
OPR	Edmonton Regional Airports Authority 780-890-8327 H24 Cert
PF	A-1 avbl 1430-2300Z† D-2,3,4,5,6
CUST	AOE/15 (Cost Recovery) 888-226-7277 14-22Z†
FLT PLN	
FIC	Edmonton 866-WXBRIEF (Toll free within Canada) or 866-541-4102 (Toll free within Canada & USA)
ACC	Edmonton IFR 888-358-7526
WX	METAR AUTO H24 (see COMM) TAF H24, issue times: 00, 06, 12, 18Z WxCam
SERVICES	
FUEL	100LL, JA-1 (FSII avbl), SP Villeneuve Aviation Centre Inc. 780-460-0470 Mon-Fri 14-01Z†, Sat 15-23Z†, Sun 17-21Z† O/T call out chgs apply. Fuel truck avbl. Automated credit card processing cardlock. Cardinal Aviation Centre FBO 780-459-0952/780-446-5949 Mon-Sat 15-23Z† Sun 20-23Z† O/T 780-446-5949. HQ Fuels Ltd. Automated credit card processing. Fuel truck avbl 888-451-4621
OIL	All
S	1,2,3,4,5,6

ALBERTA

AERODROME / FACILITY DIRECTORY

EDMONTON / VILLENEUVE AB (Cont'd)

CZVL

RWY DATA	Rwy 08(086°)/26(266°) 5001x100 ASPH Rwy 08 down 0.42% Rwy 16(166°)/34(346°) 3496x100 ASPH RESA: 08/26 295'
RWY CERT	Rwy 08/26 AGN IIIB Rwy 16/34 AGN II
TWY CERT	Twy: A,B AGN II
APRON	Apron II PPR fr tenant or opr for access. Bcst intentions on 123.45. Apron II rstd to acft with wingspans less than 59.1'.
RCR	Opr Ltd hrs, 3 hrs PN. Call out fee may be levied. CRFI, PCN.
LIGHTING	08-(TE HI) P2, 26-AN(TE HI) P2, 16-(TE ME), 34-(TE ME) ARCAL-118.8 type K
COMM	<p>ATIS 128.35 15-04Z‡</p> <p>GND Villeneuve 120.8 15-04Z‡</p> <p>TWR Villeneuve 118.8 (V) 15-04Z‡ (emerg only 780-458-5828)</p> <p>ATF tfc 118.8 04-15Z‡ 5NM to below 4600 ASL</p> <p>ARR Edmonton Tml 119.5</p> <p>DEP Edmonton Tml 119.5</p> <p>VFR ADV Edmonton Tml 127.4 in Class C</p> <p>AWOS 128.35 04-15Z‡</p>
NAV	<p>DME IVL 111.95 Ch 56(Y) N53 40 23 W113 50 36 (2251')</p> <p>ILS IVL 111.95 (Rwy 26) RVR</p>
PRO	<p>Rgt hand circuits Rwy 16 & 26 (CAR 602.96). Pilots to close VFR flt plans with Edmonton FIC (phone) when practicable or request closure fr ATC. For VFR routes see Edmonton VTPC or as directed by ATC. Edmonton Class C Airspace overlies CZ. TRANSPONDER MANDATORY - Acft operating in Edmonton Class C require a discrete transponder code which may be obtained by filing a flt plan or ctc 888-358-7526 at least 30 min prior to entering. IFR Training Restriction: PPR for IFR tng flights. Ctc ATC 888-358-7526 no more than 24 hrs prior to ETD.</p> <p>HELI OPS: Use Heli Training Area "NORTH" or "WEST" sfc to 3500 ASL. Remain North of Taxiway Bravo while using North Heli training area. Remain West of Taxiway Alpha while using West Heli training area.</p>
CAUTION	Deer in vic of rwys. Aerobatics may be in progress over aprt 5800 ASL & below. Rising terrain immediately S of thld Rwy 34. Avoid flt over noise sensitive areas.