

---

# FLIGHT PLAN & SITE SURVEY

---

C 52-5320 BOUNDARY BARNSTORMERS RADIO  
CONTROLLED MODEL FLYING CLUB- GRAND FORKS  
AIRPORT

May 22, 2026



## IMPORTANT NOTICE

Please ensure you have received all required authorizations prior to flight. This Site Survey was created using RPAS Wilco. The user accepts all responsibility for the accuracy of the information.

Terms & Conditions: [rpaswilco.com/#tnc](https://rpaswilco.com/#tnc)

# Mission Information

C 52-5320 BOUNDARY BARNSTORMERS RADIO CONTROLLED MODEL FLYING CLUB- GRAND FORKS AIRPORT

## FLIGHT DETAILS

Reference No:	<b>MAAC-52-5320</b>
Project Name:	<b>BOUNDARY BARNSTORMERS RADIO CONTROLLED MODEL FLYING CLUB</b>
Pilot Name:	<b>MAAC</b>
Pilot Certificate:	
Mission Type:	<b>VLOS</b>
Flight Start:	<b>May 22, 2026 07:42 PM</b>
Flight End:	<b>May 22, 2026 08:42 PM</b>

## LOCATION DETAILS

Flight Address:	<b>GRAND FORKS AIRPORT</b>
Latitude:	<b>49° 0' 57.94" N ( 49.016 )</b>
Longitude:	<b>118° 25' 41.89" W ( -118.428 )</b>
Field Elevation:	<b>1713 ft MSL</b>
Altitude / Radius:	<b>400 ft / 926 m ( 0.5 nm )</b>
Classification:	<b>UNCONTROLLED</b>
FIR / Contact:	<b>CZVR / 604-586-4500</b>

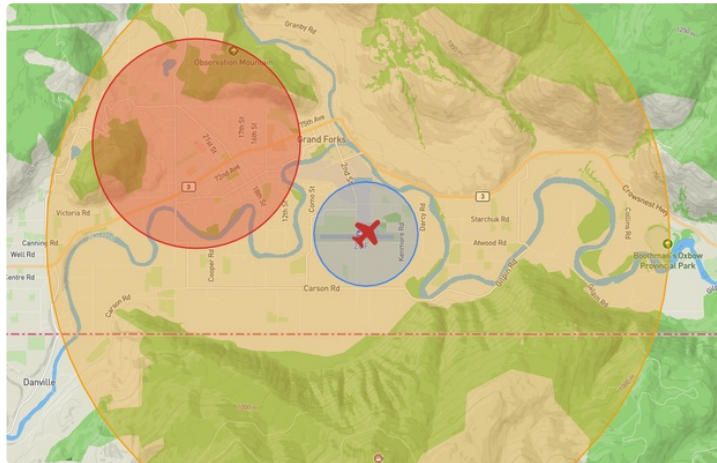
## REPORT CONTENTS

Site Survey • Obstacles (if available) • Nearby Aerodromes • Canadian Aviation Regulations • GFA • Aerodrome Supplements • METAR & TAF • NOTAMs • CFS





# Flight Map & MODEL Details

MISSION LOCATION SURVEY

## FLIGHT AREA MAP



## MISSION LOCATION DETAILS

ROLE	LATITUDE	LONGITUDE
 MODEL	49° 0' 57.94" N 49.016	118° 25' 41.89" W -118.428
 Pilot		
 Payload Op.		
 Observer		

# Airspace Classification

MISSION LOCATION SURVEY

## AIRSPACE MAP



## OVERLYING AIRSPACES

Class	Name	Floor	Ceiling
E	3.1.2-48 [CAE]	9000AGL	18000MSL
B	3.1.2-49 [CAE]	12500MSL	18000MSL

## NEAREST AERODROMES & DISTANCE FROM OPERATION

GRAND FORKS (CZGF - AERODROME - Reg)	Lat: 49.016	Long: -118.43	0.156KM	0.084NM	SW
GRAND FORKS (BOUNDARY HOSPITAL) (CGF4 - HELIPORT - Cert)	Lat: 49.031	Long: -118.47	3.421KM	1.847NM	NW
MIDWAY (CBM6 - AERODROME - Reg)	Lat: 49.01	Long: -118.79	26.367KM	14.237NM	W

## BRITISH COLUMBIA

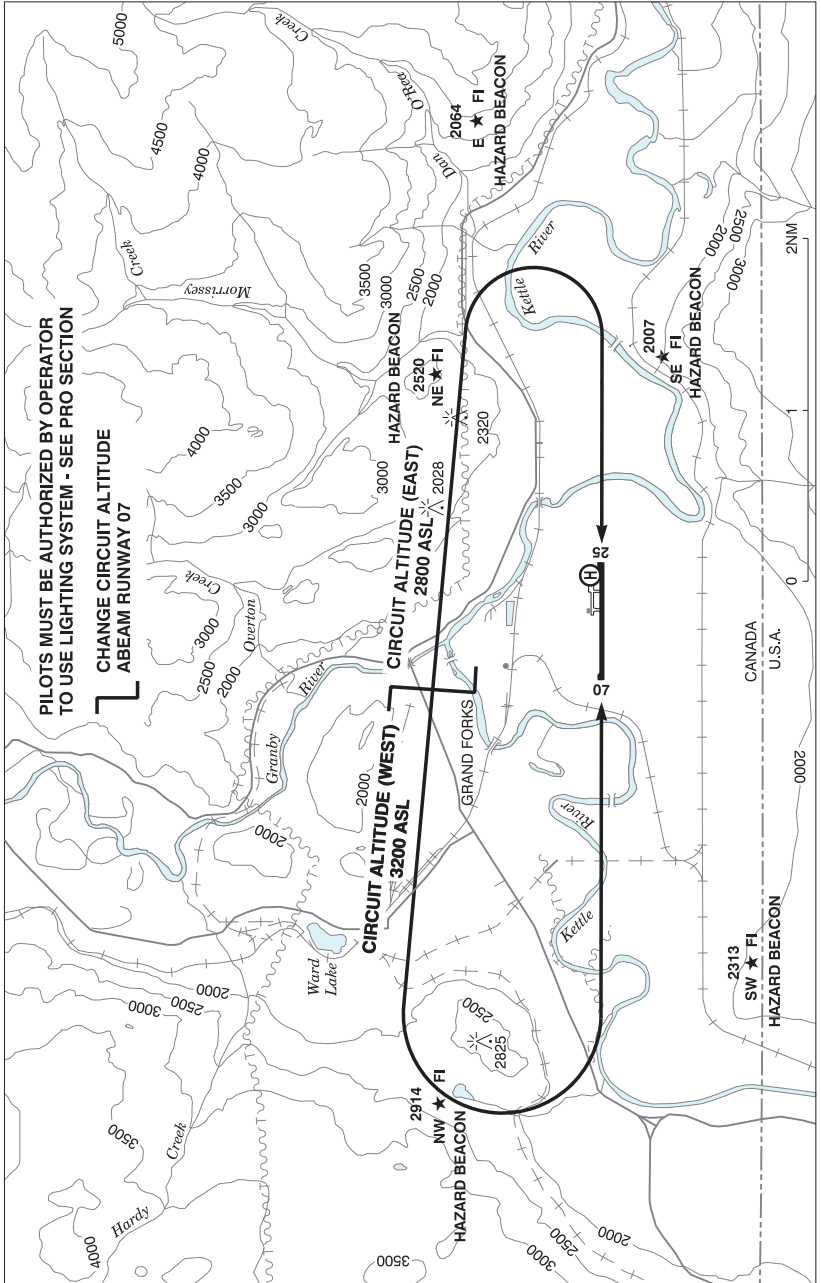
## AERODROME / FACILITY DIRECTORY

## GRAND FORKS BC

CZGF

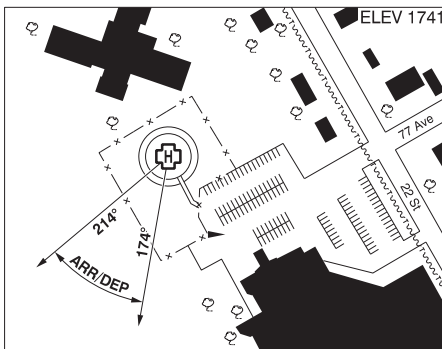
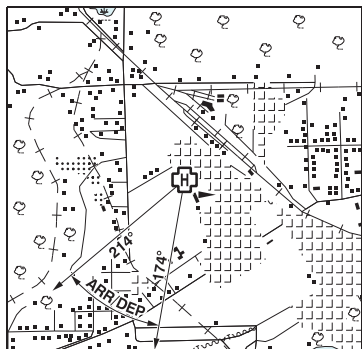
<b>REF</b>	N49 00 56 W118 25 50 1SSE 16°E (2013) UTC-8(7) Elev 1724' A5005 LO2 CAP	
<b>OPR</b>	City 250-442-8266 Reg	
<b>PF</b>	A-1 C-2,3,4,5,6	
<b>CUST</b>	AOE/CAN	
<b>FLT PLN</b>	<b>FIC</b> Kamloops 866-WXBRIEF (Toll free within Canada) or 866-541-4101 (Toll free within Canada & USA) <b>WX</b> AUTO 250-442-0043 (see COMM) WxCam	
<b>SERVICES</b>	<b>FUEL</b> 100LL, JA 250-443-4183 <b>OIL</b> 80, 100, 15W-50 <b>S</b> 1,3,4,5	
<b>RWY DATA</b>	Rwy 07(074°)/25(254°) 4311x100 ASPH Rwy 25 up 0.78% AGN IIIA <b>RCR</b> Opr Ltd win maint 1500-2330‡ Mon-Fri exc hols. O/T 2 hrs PN. Call out chg may be levied.	
<b>LIGHTING</b>	07-(TE ME) P1 4°, 25-(TE ME) P1 4° ARCAL-123.2 type K key mic 5 times to activate. Ngt use only. See PRO.	
<b>COMM</b>	<b>RCO</b> Pacific rdo 125.85 (FISE) 126.7 (bcst) <b>ATF</b> tfc 123.2 5NM 4700 ASL <b>AUTO</b> 122.55	
<b>PRO</b>	Only pilots auth by the Aprt Opr in accordance with the Aprt Ops Manual can use the aprt dur hrs of darkness. Ngt circuit alt W 3200 ASL, E 2800 ASL. See VTPC ngt circuit pro. Rgt hand circuits Rwy 25 (CAR 602.96).	
<b>CAUTION</b>	Remotely Piloted Aircraft (RPA) ops in vic, N of rwy and radio ctl acft flying, monitoring ATF.	

**GRAND FORKS VFR TERMINAL PROCEDURES CHART - NIGHT CIRCUIT PROCEDURE**



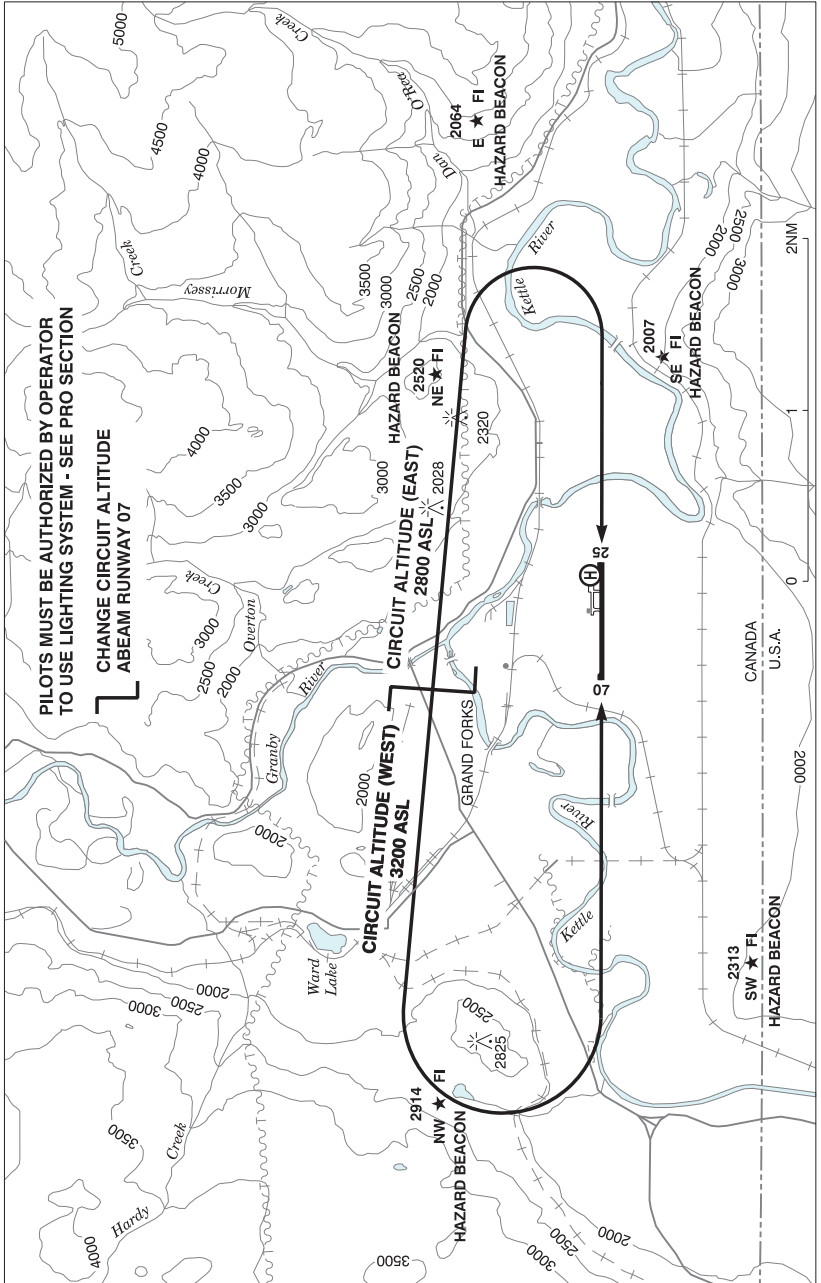
**GRAND FORKS (BOUNDARY HOSPITAL) BC (Heli)**

**CGF4**



<b>REF</b>	N49 01 50 W118 28 12 Adj 16°E (2014) UTC-8(7) Elev 1741' A5005
<b>OPR</b>	Boundary Hospital 250-443-1678 Cert PPR
<b>PF</b>	A-1,4 C-2,3,5,6
<b>FLT PLN</b>	<b>FIG</b> Kamloops 866-WXBRIEF (Toll free within Canada) or 866-541-4101 (Toll free within Canada & USA)
<b>HELI DATA</b>	FATO/TLOF 86' dia ASPH Safety Area 115' dia Max heli overall length 57.4'
<b>RCR</b>	Opr
<b>COMM</b>	<b>RCO</b> Pacific rdo 125.85 (FISE) 126.7(bcst) <b>ATF</b> Grand Forks tfc 123.2 5NM centred on Grand Forks A/D 1.8NM ESE 4700 ASL
<b>PRO</b>	Arr/dep btwn 174° - 214° fr heli, Slope 8% (H3), day only (CAR 602.96).
<b>CAUTION</b>	Marked P-Line 345' NE to SW of heli 41 AGL, 2 prkg lgts and windsock 160' SE of heli.

**GRAND FORKS VFR TERMINAL PROCEDURES CHART - NIGHT CIRCUIT PROCEDURE**



## BRITISH COLUMBIA

## AERODROME / FACILITY DIRECTORY

## MIDWAY BC

CBM6

<b>REF</b>	N49 00 36 W118 47 23 Adj W 16°E (2013) UTC-8(7) Elev 1896' A5005	
<b>OPR</b>	Village of Midway 250-449-2222 Reg	
<b>PF</b>	C-1,2,4,5	
<b>FLT PLN</b>	<b>FIC</b> Kamloops 866-WXBRIEF (Toll free within Canada) or 866-541-4101 (Toll free within Canada & USA)	
<b>RWY DATA</b>	Rwy 08/26 3500x125 GRASS <b>RCR</b> Opr No win maint	
<b>COMM</b>	<b>ATF</b> tfc 123.2 2NM 3400 ASL	
<b>CAUTION</b>	Rdo-ctl acft oprg fr A/D. Model acft activity next to rwy.	