

---

# FLIGHT PLAN & SITE SURVEY

---

H 540-5342 PROPNUTS R/C FLYING CLUB- VERN WRIGHT  
MEMORIAL FIELD

May 22, 2026



**IMPORTANT NOTICE**

Please ensure you have received all required authorizations prior to flight. This Site Survey was created using RPAS Wilco. The user accepts all responsibility for the accuracy of the information.

Terms & Conditions: [rpswilco.com/#tnc](https://rpswilco.com/#tnc)

# Mission Information

H 540-5342 PROPNUITS R/C FLYING CLUB- VERN WRIGHT MEMORIAL FIELD

## FLIGHT DETAILS

Reference No:	<b>MAAC-540-5342</b>
Project Name:	<b>PROPNUITS R/C FLYING CLUB</b>
Pilot Name:	<b>MAAC</b>
Pilot Certificate:	
Mission Type:	<b>VLOS</b>
Flight Start:	<b>May 22, 2026 07:42 PM</b>
Flight End:	<b>May 22, 2026 08:42 PM</b>

## LOCATION DETAILS

Flight Address:	<b>VERN WRIGHT MEMORIAL FIELD</b>
Latitude:	<b>49° 5' 15.75" N ( 49.088 )</b>
Longitude:	<b>122° 16' 1.46" W ( -122.267 )</b>
Field Elevation:	<b>13 ft MSL</b>
Altitude / Radius:	<b>400 ft / 926 m ( 0.5 nm )</b>
Classification:	<b>UNCONTROLLED</b>
FIR / Contact:	<b>CZVR / 604-586-4500</b>

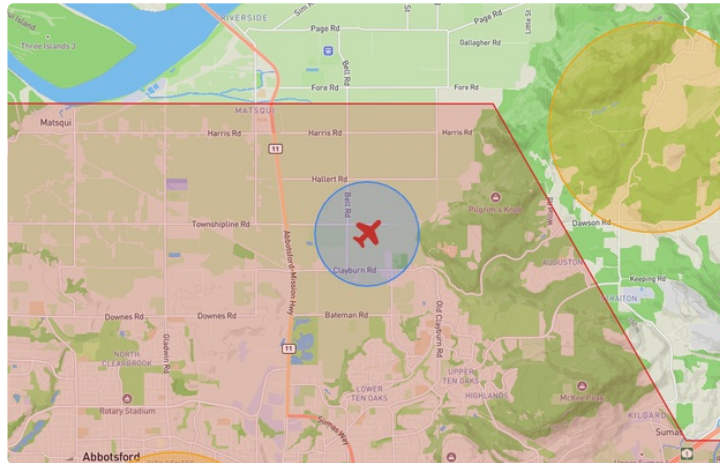
## REPORT CONTENTS

Site Survey • Obstacles (if available) • Nearby Aerodromes • Canadian Aviation Regulations • GFA • Aerodrome Supplements • METAR & TAF • NOTAMs • CFS





# Flight Map & MODEL Details

MISSION LOCATION SURVEY

## FLIGHT AREA MAP



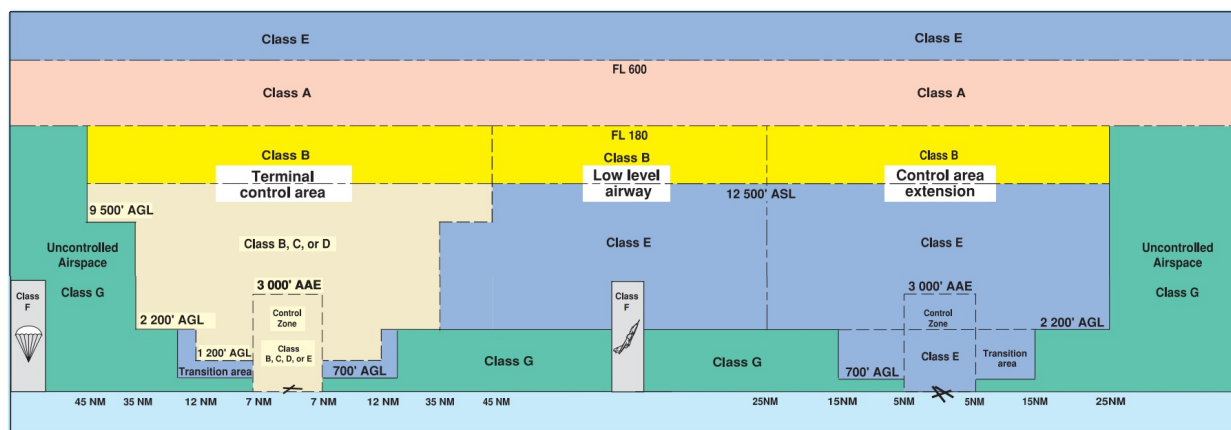
## MISSION LOCATION DETAILS

ROLE	LATITUDE	LONGITUDE
 MODEL	49° 5' 15.75" N 49.088	122° 16' 1.46" W -122.267
 Pilot		
 Payload Op.		
 Observer		

# Airspace Classification

MISSION LOCATION SURVEY

## AIRSPACE MAP



## OVERLYING AIRSPACES

Class	Name	Floor	Ceiling
F	CYA186 (A,T,H) DICKSON LAKE, BC	SFC	6000MSL
C	Vancouver, BC l) [TCA]	4500MSL	6500MSL
F	CYA185 (A,T,H) ALOUETTE LAKE, BC	SFC	4000MSL
E	Pitt Meadows, BC b) [CAE]	2000MSL	18000MSL
F	CYA188 (A,T) GLEN VALLEY, BC	SFC	5500MSL
C	Vancouver, BC s) [TCA]	6500MSL	8500MSL
C	Vancouver, BC t) [TCA]	8500MSL	9500MSL
C	Vancouver, BC u) [TCA]	9500MSL	12500MSL
B	Vancouver, BC v) [TCA]	12500MSL	18000MSL
E	T629 Fixed RNAV Route	2200AGL	18000MSL
E	T800 Fixed RNAV Route	2200AGL	18000MSL
E	Abbotsford, BC [TA]	1500AGL	18000MSL
C	Vancouver, BC h) [TCA]	5500MSL	6500MSL
F	CYR140 MISSION, BC	SFC	1500MSL
E	V342-1 VHF/UHF Airway	2200AGL	18000MSL
C	Abbotsford, BC [CZ]	SFC	4500MSL
E	T645-1 Fixed RNAV Route	2200AGL	18000MSL
C	Vancouver, BC i) [TCA]	4000MSL	6500MSL
E	East Vancouver, BC [CAE]	9000MSL	12500MSL
C	Vancouver, BC j) [TCA]	3500MSL	6500MSL
E	3.1.1-9 [TA]	700AGL	18000MSL
C	Vancouver, BC k) [TCA]	2700MSL	6500MSL
F	CYR141 MATSQUI, BC (Abbotsford, BC)	SFC	300MSL

## NEAREST AERODROMES & DISTANCE FROM OPERATION

ABBOTSFORD (SUMAS MOUNTAIN) (CSM7 - HELIPORT - Reg)	Lat: 49.105	Long: -122.197	5.426KM	2.93NM	E
ABBOTSFORD (HOSP AND CANCER CENTRE) (CAB5 - HELIPORT - Reg)	Lat: 49.036	Long: -122.314	6.685KM	3.61NM	SW



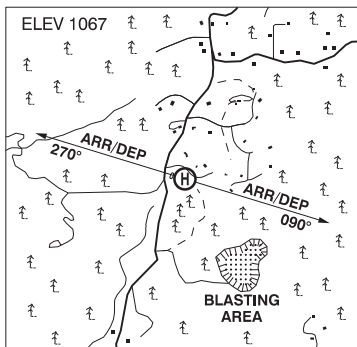
## BRITISH COLUMBIA

## AERODROME / FACILITY DIRECTORY

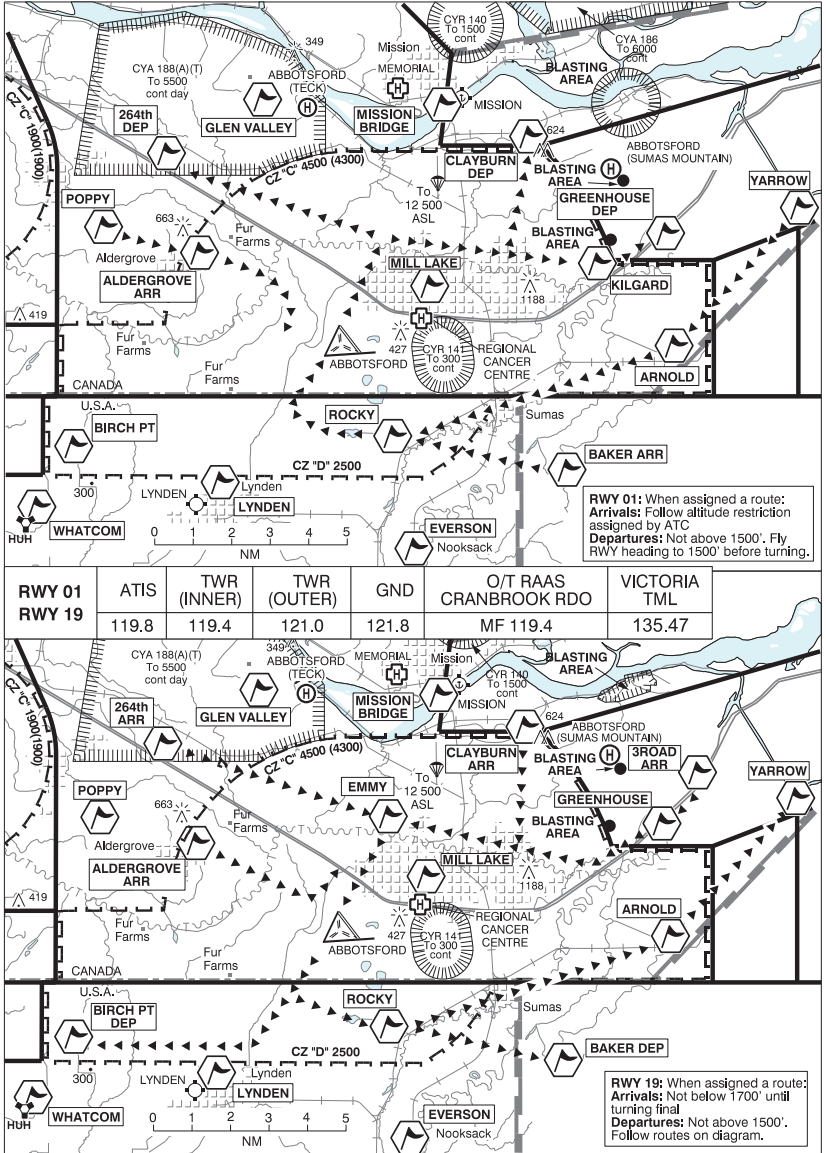
## ABBOTSFORD (SUMAS MOUNTAIN) BC (Heli)

CSM7

<b>REF</b>	N49 06 18 W122 11 51 4.5NE 17°E (2011) UTC-8(7) Elev 1067' VTA A5004
<b>OPR</b>	Hydra Helicopters Inc. 604-309-8393 Reg PPR
<b>PF</b>	B-1 D-2,3,4,5,6
<b>FLT PLN</b>	
<b>FIC</b>	Kamloops 866-WXBRIEF (Toll free within Canada) or 866-541-4101 (Toll free within Canada & USA)
<b>HELI DATA</b>	FATO 60' x 60' CONC TLOF 60' x 60' CONC Safety Area 60' x 60'
<b>RCR</b>	Opr Day only
<b>COMM</b>	
<b>ATF</b>	tfc 123.2 1NM 2100 ASL
<b>PRO</b>	Arr/dep 090° or 270° fr heli to avoid overflight of built-up area and steep terrain
<b>CAUTION</b>	Extv tfc transiting E and W over the Fraser River. High trees S, W and N. Blasting area 2NM S. Acft tng area (CYA 182) 4NM E. CYXX CZ 1NM W.



**ABBOTSFORD VFR TERMINAL PROCEDURES CHART RWY 01 & 19**



## ABBOTSFORD VFR TERMINAL PROCEDURES CHART RWY 01 &amp; 19 (Cont'd)

NAME	IDENT	LAT/LONG
264th	VCXYZ	N49° 06' 06" W122° 29' 36"
3ROAD	VCTRD	N49° 05' 23" W122° 07' 29"
ALDERGROVE	VCGRV	N49° 03' 30" W122° 28' 12"
ARNOLD	VCARN	N49° 01' 00" W122° 09' 00"
BAKER	VCBKR	N48° 57' 42" W122° 13' 24"
BIRCH POINT	VCBPT	N48° 56' 36" W122° 49' 06"
CLAYBURN	VCCYB	N49° 06' 36" W122° 14' 54"
EMMY	VCEMY	N49° 04' 12" W122° 20' 26"
EVERSON	VCEVR	N48° 55' 48" W122° 19' 24"
GLEN VALLEY	VCGLN	N49° 07' 36" W122° 25' 42"
GREENHOUSE	VCGRE	N49° 04' 00" W122° 09' 18"
KILGARD	VCKLH	N49° 03' 12" W122° 12' 06"
LYNDEN	VCLDN	N48° 57' 24" W122° 27' 24"
MILL LAKE	VCMLK	N49° 02' 36" W122° 18' 54"
MISSION BRIDGE	VCMSB	N49° 07' 24" W122° 18' 24"
POPPY	VCPPY	N49° 04' 12" W122° 32' 12"
ROCKY	VCRKY	N48° 58' 36" W122° 20' 24"
WHATCOM	VCWCM	N48° 56' 43" W122° 34' 45"
YARROW	VCYAR	N49° 04' 50" W122° 03' 53"

**ARRIVALS**

Obtain ATIS on 119.8 – contact tower on 121.0 when advertised.

**RWY 01** - No altitude restriction unless assigned by ATC

ALDERGROVE - Fly direct the airport, join left downwind RWY 01.

BAKER - Fly direct ROCKY. Join right base RWY 01.

YARROW - Fly direct ARNOLD, then ROCKY. Join right base RWY 01.

**RWY 19** – All Arrival Routes: Not Below 1700 until turning final.

3ROAD - Fly to GREENHOUSE, follow powerlines westbound. Turn final at EMMY.

Caution: Terrain at KILGARD.

CLAYBURN - Fly southbound to powerlines. Follow powerlines westbound. Turn final at EMMY.

264th - Fly direct EMMY, then turn final. \*Do not follow HWY1.

ALDERGROVE - Fly direct airport. Join mid-right downwind RWY 19.

**DEPARTURES**

All Routes: Not Above 1500 until cleared higher.

**RWY 01:**

264th - Fly RWY heading to 1500, then turn direct 264th.

CLAYBURN - Fly RWY heading to 1500, then turn eastbound to the Mission Hwy, then direct CLAYBURN.

GREENHOUSE - Fly RWY heading to 1500, then turn direct KILGARD, then GREENHOUSE.

**RWY 19:**

BIRCH PT - Fly RWY heading until South of US Border. Then direct BIRCH PT.

BAKER - Fly RWY heading until South of US Border. Then direct BAKER.

YARROW - Fly RWY heading until South of US Border, then direct ROCKY, ARNOLD then YARROW.

**ABBOTSFORD VFR TERMINAL PROCEDURES CHART RWY 01 & 19 (Cont'd)**

**OBTAINING A TRANSPONDER CODE:**

All VFR aircraft arriving/departing/overflying Abbotsford Class C or D airspace require a transponder code. Recommended methods of obtaining transponder code:

- Filing a VFR flight plan
- Contacting Kamloops FIC at 1-866-541-4101
- Contacting Pacific Radio on frequency 122.5 or 126.7
- Via text message through the NAV CANADA Transponder Code Retrieval (TCR) system.

Medium and High-performance aircraft call YXX Tower in advance of requesting VFR training in the area.

## BRITISH COLUMBIA

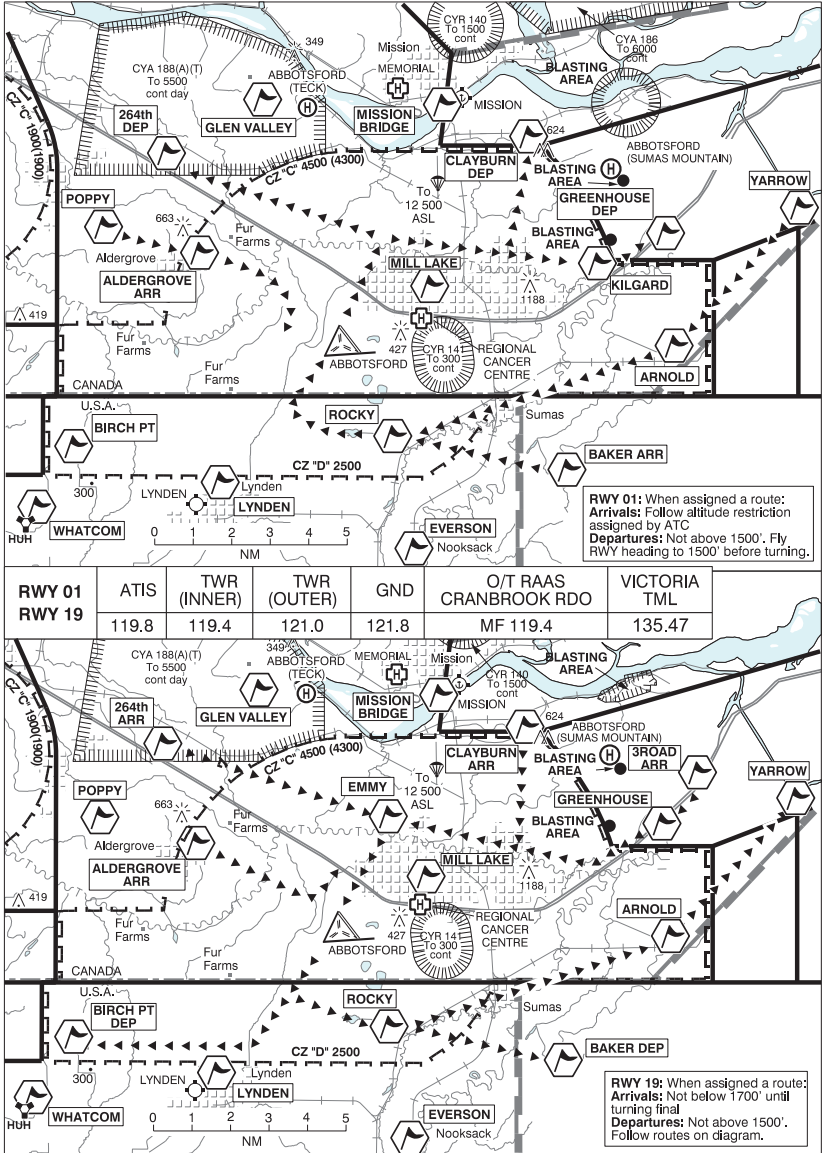
## AERODROME / FACILITY DIRECTORY

## ABBOTSFORD (REGIONAL HOSP &amp; CANCER CENTRE) BC (Heli)

CAB5

<b>REF</b>	N49 02 10 W122 18 51 17°E (2012) UTC-8(7) Elev 287' VTA A5004	
<b>OPR</b>	Abbotsford Regional Hosp & Cancer Centre 833-900-1516 Cert PPR	
<b>FLT PLN</b>	<b>FIC</b> Kamloops 866-WXBRIEF (Toll free within Canada) or 866-541-4101 (Toll free within Canada & USA)	
<b>HELI DATA</b>	FATO/TLOF 86' dia CONC Safety Area 115' dia Max heli overall length 57.4'	
<b>RCR</b>	Opr	
<b>LIGHTING</b>	RY(LO) DR	
<b>COMM</b>		
<b>RCO</b>	Cranbrook rdo 119.4 (RAAS) 07-15Z‡ Pacific rdo 122.5 (FISE) 126.7 (bcst)	
<b>ATIS</b>	119.8 15-07Z‡	
<b>TWR</b>	Abbotsford 119.4 (inner) 121.0 (outer) 15-07Z‡	
<b>MF</b>	Cranbrook rdo 119.4 07-15Z‡ CZ shape irregular 2500 ASL (CAR 602.98)	
<b>A/G</b>	Hosp Security 158.76 FM 3 min PN	
<b>PRO</b>	Heli lctd in CYR141. PPR fr Warden Pacific Institute. Ops rstd to acft auth by British Columbia Ambulance Service. Arr/dep 116° fr heli, slope 6% (H2) & 263° fr heli slope 16% (H1).	
<b>CAUTION</b>	Trees along edge of flt paths.	

**ABBOTSFORD VFR TERMINAL PROCEDURES CHART RWY 01 & 19**



## ABBOTSFORD VFR TERMINAL PROCEDURES CHART RWY 01 &amp; 19 (Cont'd)

NAME	IDENT	LAT/LONG
264th	VCXYZ	N49° 06' 06" W122° 29' 36"
3ROAD	VCTRD	N49° 05' 23" W122° 07' 29"
ALDERGROVE	VCGRV	N49° 03' 30" W122° 28' 12"
ARNOLD	VCARN	N49° 01' 00" W122° 09' 00"
BAKER	VCBKR	N48° 57' 42" W122° 13' 24"
BIRCH POINT	VCBPT	N48° 56' 36" W122° 49' 06"
CLAYBURN	VCCYB	N49° 06' 36" W122° 14' 54"
EMMY	VCEMY	N49° 04' 12" W122° 20' 26"
EVERSON	VCEVR	N48° 55' 48" W122° 19' 24"
GLEN VALLEY	VCGLN	N49° 07' 36" W122° 25' 42"
GREENHOUSE	VCGRE	N49° 04' 00" W122° 09' 18"
KILGARD	VCKLH	N49° 03' 12" W122° 12' 06"
LYNDEN	VCLDN	N48° 57' 24" W122° 27' 24"
MILL LAKE	VCMLK	N49° 02' 36" W122° 18' 54"
MISSION BRIDGE	VCMSB	N49° 07' 24" W122° 18' 24"
POPPY	VCPPY	N49° 04' 12" W122° 32' 12"
ROCKY	VCRKY	N48° 58' 36" W122° 20' 24"
WHATCOM	VCWCM	N48° 56' 43" W122° 34' 45"
YARROW	VCYAR	N49° 04' 50" W122° 03' 53"

**ARRIVALS**

Obtain ATIS on 119.8 – contact tower on 121.0 when advertised.

**RWY 01** - No altitude restriction unless assigned by ATC

ALDERGROVE - Fly direct the airport, join left downwind RWY 01.

BAKER - Fly direct ROCKY. Join right base RWY 01.

YARROW - Fly direct ARNOLD, then ROCKY. Join right base RWY 01.

**RWY 19** – All Arrival Routes: Not Below 1700 until turning final.

3ROAD - Fly to GREENHOUSE, follow powerlines westbound. Turn final at EMMY.

Caution: Terrain at KILGARD.

CLAYBURN - Fly southbound to powerlines. Follow powerlines westbound. Turn final at EMMY.

264th - Fly direct EMMY, then turn final. \*Do not follow HWY1.

ALDERGROVE - Fly direct airport. Join mid-right downwind RWY 19.

**DEPARTURES**

All Routes: Not Above 1500 until cleared higher.

**RWY 01:**

264th - Fly RWY heading to 1500, then turn direct 264th.

CLAYBURN - Fly RWY heading to 1500, then turn eastbound to the Mission Hwy, then direct CLAYBURN.

GREENHOUSE - Fly RWY heading to 1500, then turn direct KILGARD, then GREENHOUSE.

**RWY 19:**

BIRCH PT - Fly RWY heading until South of US Border. Then direct BIRCH PT.

BAKER - Fly RWY heading until South of US Border. Then direct BAKER.

YARROW - Fly RWY heading until South of US Border, then direct ROCKY, ARNOLD then YARROW.

**ABBOTSFORD VFR TERMINAL PROCEDURES CHART RWY 01 & 19 (Cont'd)**

**OBTAINING A TRANSPONDER CODE:**

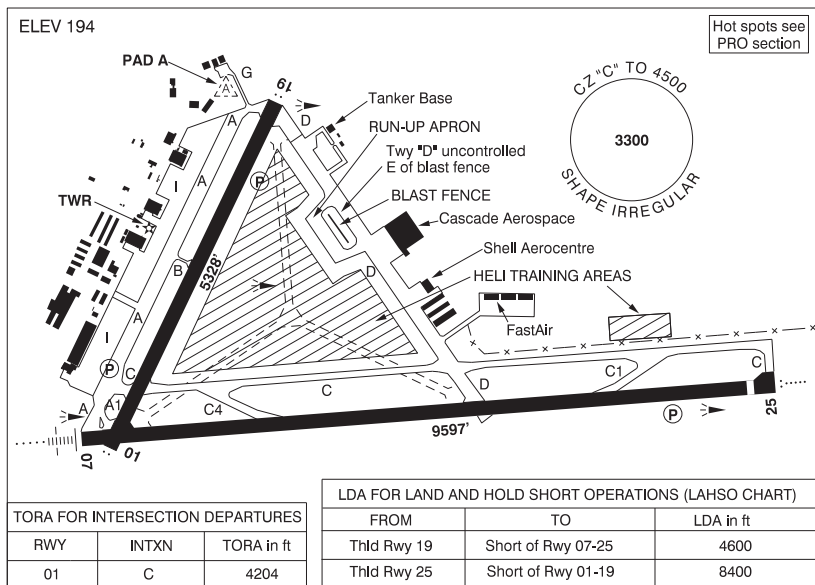
All VFR aircraft arriving/departing/overflying Abbotsford Class C or D airspace require a transponder code. Recommended methods of obtaining transponder code:

- Filing a VFR flight plan
- Contacting Kamloops FIC at 1-866-541-4101
- Contacting Pacific Radio on frequency 122.5 or 126.7
- Via text message through the NAV CANADA Transponder Code Retrieval (TCR) system.

Medium and High-performance aircraft call YXX Tower in advance of requesting VFR training in the area.

**ABBOTSFORD BC**

**CYXX**



<b>REF</b>	N49 01 31 W122 21 36 2.2SW 17°E (2014) UTC-8(7) Elev 194' VTA A5004 L02 HI3 T1 CAP RCAP
<b>OPR</b>	City of Abbotsford 604-855-1001 1230-0830Z† Cert
<b>PF</b>	A-1,2,3,6,7 C-4,5
<b>CUST</b>	AOE/15 888-226-7277 16-08Z†
<b>FLT PLN</b>	Pilots are to open/close VFR Flt Pln with Kamloops FIC via phone or Pacific rdo 122.5 when practicable.
<b>FIC</b>	Kamloops 866-WXBRIEF (Toll free within Canada) or 866-541-4101 (Toll free within Canada & USA)
<b>ACC</b>	Vancouver IFR 604-586-4590/4591 or 800-668-1333; IFR tng fits, IFR maintenance fits, IFR test fits and IFR planned missed approach fits PPR ctc 604-586-4592 or 800-668-1333.
<b>WX</b>	METAR H24. TAF H24, issue times: 00, 06, 12, 18Z.
<b>SERVICES</b>	Call out chg may be levied for one or more services.
<b>FUEL</b>	MG-1, 100LL, JA (CON S IP JA-1, FSII) 604-854-1964 by truck, JA-1 (FSII avbl) 604-425-4380 by truck self-serve VISA & Mastercard only 778-800-0132.
<b>OIL</b>	All
<b>S</b>	1,2,3,4,5
<b>ARFF</b>	DESIGNATED CAT 7 1230-0830Z† O/T 2 hr PN 604-864-5544.
<b>JASU</b>	AC/DC 28V 400 amp min
<b>PVT ADV</b>	Abbotsford Shell Aerocentre 122.95 604-854-1964 or 877-270-2010; FastAir 122.875 604-425-4380
<b>MIL CON</b>	Carson Air 604-854-1964

## BRITISH COLUMBIA

## AERODROME / FACILITY DIRECTORY

## ABBOTSFORD BC (Cont'd)

CYXX

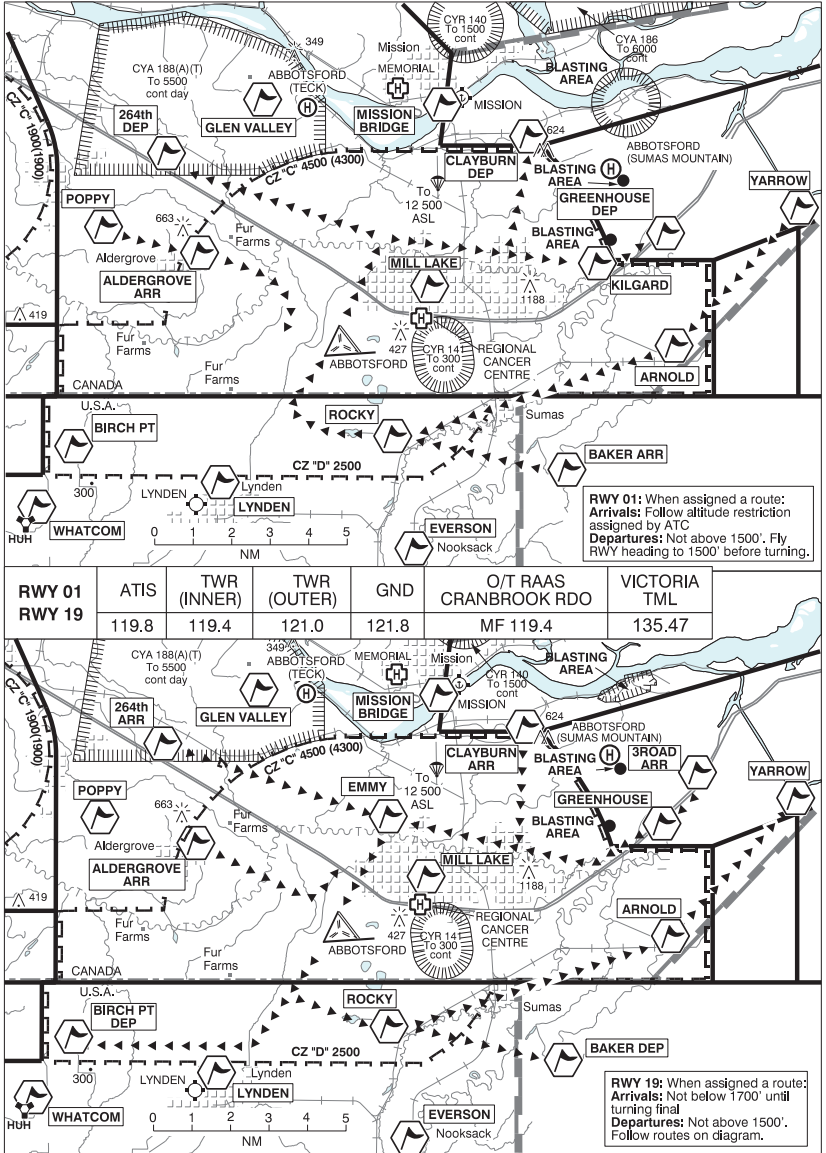
<b>RWY DATA</b>	Rwy 07(069°)/25(249°) 9597x200 ASPH Thld 25 disp1 295'. Rwy 01(009°)/19(189°) 5328x200 ASPH
<b>RWY CERT</b>	Rwy 07 RVR 1200(1/4sm)/Rwy 25 RVR 1200(1/4sm) AGN V Rwy 01/19 AGN IIIB
<b>TWY CERT</b>	Twy: B, G AGN II Twy D AGN IV
<b>TWY</b>	Twy D uncontrolled E of blast fence. Twy B rstd to acft with wingspans 78' or less. Reverse turns to exit Rwy 07 onto Twy C4 rstd to acft with wingspans 50' or less. Turns onto Twy A from Twy C rstd to acft with wingspans 171' or less. Turns from Twy A onto Twy C rstd to C-130 & smaller (blast issue). Turns west onto Twy C4 and east onto Twy C1 from Twy C rstd to acft with wingspans 133' or less. Twy G uncontrolled.
<b>APRON</b>	Ltd prkg and de-icing dur win ops, all wide body acft 2hr PN ctc ops 604-864-5544. Corporate itinerant prkg ctc Shell Aerocentre.
<b>RCR</b>	Opr Ltd win maint 1400-0730Z†, O/T 2 hrs PN call out chg. PPR dur win maint exc sked ops, altn or emerg. CRFI, PCN.
<b>LIGHTING</b>	01-AS(TE ME) P2, 19-AS(TE ME) P2, 07-AN(TE HI), 25-AO(TE HI) P3
<b>COMM</b>	
<b>RCO</b>	Cranbrook rdo 119.4 (RAAS) 07-15Z† Pacific rdo 122.5 (FISE) 126.7 (bcst)
<b>ATIS</b>	119.8 15-07Z†
<b>GND</b>	121.8 15-07Z†
<b>TWR</b>	119.4 (inner) 121.0 (outer) 295.0 (V) 15-07Z† (emerg only 604-855-1199)
<b>MF</b>	MF and advsy svcs only provided over Canadian territory. Cranbrook rdo 119.4 295.0 07-15Z† CZ shape irregular 4500 ASL (CAR 602.98) (emerg only 250-426-6312)
<b>TML</b>	Victoria 135.47
<b>ARR</b>	Victoria Tml 132.7 (avail on gnd)
<b>DEP</b>	Victoria Tml 132.7 (avail on gnd)
<b>NAV</b>	
<b>DME</b>	YAI 116.1 Ch 108 N49 01 04 W122 22 34 (200')
<b>ILS</b>	IXX 109.7 (Rwy 07) RVR

## ABBOTSFORD BC (Cont'd)

CYXX

<b>PRO</b>	<p>Rgt hand circuit Rwy 07 &amp; 01 (CAR 602.96). Rwy 01/19, Twy B, C, C1 and C4 not avbl for acft taxiing when visibility below 1/2sm (CAR 602.96)</p> <p>NIGHT RESTRICTIONS: Turbo-jet, turbo-fan and turbo-prop tng not permitted fr 06-15Z±. All other night tng as authorized by the APM.</p> <p>Procedures for crossing the southern Strait of Georgia within Tml Class C airspace refer to Vancouver Intl, VTPC for Crossing the Southern Strait of Georgia.</p> <p>Pilots should refer to Canadian Airport Charts (CAC) to obtain details on established hot spots, prior to operating on maneuvering areas. CAC are available for free on the NAV CANADA website.</p> <p><b>ATS REQUIREMENTS:</b> All VFR acft arriving, departing or transiting the Vancouver or Victoria Tower Class C or D airspace require a transponder code.</p> <ul style="list-style-type: none"> <li>- All acft departing Vancouver or Victoria Intl (including Water Aerodrome) call Kamloops FIC at 866-541-4101 or PAC RDO 122.5 for code assignment at least 30 min prior to flight or file a VFR Flight Plan/Flight Itinerary.</li> <li>- All acft arriving Vancouver Intl (including Water Aerodrome) or transiting Vancouver or Victoria Control Zones obtain a code from one of the following ATS units: Vancouver Harbour, Nanaimo, Victoria Harbour, Boundary Bay, Langley, Abbotsford or Pitt Meadows, or call Kamloops FIC at 866-541-4101 or PAC RDO 122.5.</li> <li>- All acft arriving Victoria Intl from a non NAV CANADA site call Kamloops FIC at 866-541-4101 or PAC RDO 122.5 for code assignment at least 30 minutes prior to flight or file a VFR Flight Plan/ Flight Itinerary.</li> </ul> <p><b>VFR ARR/DEP ROUTES:</b> See VTPC</p>
<b>HELI</b>	<p>When assigned, follow heli routes as depicted on the Heli VTPC.</p> <ul style="list-style-type: none"> <li>- EAST, MCCALLUM and MARSHALL Routes: not above 700 ASL between airport and McCallum Rd.</li> <li>- MCCALLUM Route: Follow Marshall Rd. for East/West portion. *Do not follow HWY1.</li> <li>- MARSHALL Route: follow Marshall Rd. to FUNPARK then direct GREENHOUSE (reverse for inbound).</li> </ul> <p>Dep/Arr S &amp; SW as cleared by ATC.</p> <p>Heli tng areas day use only. Infield heli training area remain at least 200' from all rwys and twys. Infield circuit remain at least 400' from all rwys and north of Twy C, 700 ASL &amp; below, ctc ATC for heli circuit procedures or refer to VTPC Infield Circuit diagram.</p>
<b>CAUTION</b>	<p>Numerous obsts in heli tng areas. Parachute area aprx 5NM NNE of aprt. Tall vehicles on road S Thld 01; Ngt ops must use PAPI.</p>

**ABBOTSFORD VFR TERMINAL PROCEDURES CHART RWY 01 & 19**



## ABBOTSFORD VFR TERMINAL PROCEDURES CHART RWY 01 &amp; 19 (Cont'd)

NAME	IDENT	LAT/LONG
264th	VCXYZ	N49° 06' 06" W122° 29' 36"
3ROAD	VCTRD	N49° 05' 23" W122° 07' 29"
ALDERGROVE	VCGRV	N49° 03' 30" W122° 28' 12"
ARNOLD	VCARN	N49° 01' 00" W122° 09' 00"
BAKER	VCBKR	N48° 57' 42" W122° 13' 24"
BIRCH POINT	VCBPT	N48° 56' 36" W122° 49' 06"
CLAYBURN	VCCYB	N49° 06' 36" W122° 14' 54"
EMMY	VCEMY	N49° 04' 12" W122° 20' 26"
EVERSON	VCEVR	N48° 55' 48" W122° 19' 24"
GLEN VALLEY	VCGLN	N49° 07' 36" W122° 25' 42"
GREENHOUSE	VCGRE	N49° 04' 00" W122° 09' 18"
KILGARD	VCKLH	N49° 03' 12" W122° 12' 06"
LYNDEN	VCLDN	N48° 57' 24" W122° 27' 24"
MILL LAKE	VCMLK	N49° 02' 36" W122° 18' 54"
MISSION BRIDGE	VCMSB	N49° 07' 24" W122° 18' 24"
POPPY	VCPPY	N49° 04' 12" W122° 32' 12"
ROCKY	VCRKY	N48° 58' 36" W122° 20' 24"
WHATCOM	VCWCM	N48° 56' 43" W122° 34' 45"
YARROW	VCYAR	N49° 04' 50" W122° 03' 53"

**ARRIVALS**

Obtain ATIS on 119.8 – contact tower on 121.0 when advertised.

**RWY 01** - No altitude restriction unless assigned by ATC

ALDERGROVE - Fly direct the airport, join left downwind RWY 01.

BAKER - Fly direct ROCKY. Join right base RWY 01.

YARROW - Fly direct ARNOLD, then ROCKY. Join right base RWY 01.

**RWY 19** – All Arrival Routes: Not Below 1700 until turning final.

3ROAD - Fly to GREENHOUSE, follow powerlines westbound. Turn final at EMMY.

Caution: Terrain at KILGARD.

CLAYBURN - Fly southbound to powerlines. Follow powerlines westbound. Turn final at EMMY.

264th - Fly direct EMMY, then turn final. \*Do not follow HWY1.

ALDERGROVE - Fly direct airport. Join mid-right downwind RWY 19.

**DEPARTURES**

All Routes: Not Above 1500 until cleared higher.

**RWY 01:**

264th - Fly RWY heading to 1500, then turn direct 264th.

CLAYBURN - Fly RWY heading to 1500, then turn eastbound to the Mission Hwy, then direct CLAYBURN.

GREENHOUSE - Fly RWY heading to 1500, then turn direct KILGARD, then GREENHOUSE.

**RWY 19:**

BIRCH PT - Fly RWY heading until South of US Border. Then direct BIRCH PT.

BAKER - Fly RWY heading until South of US Border. Then direct BAKER.

YARROW - Fly RWY heading until South of US Border, then direct ROCKY, ARNOLD then YARROW.

**ABBOTSFORD VFR TERMINAL PROCEDURES CHART RWY 01 & 19 (Cont'd)**

**OBTAINING A TRANSPONDER CODE:**

All VFR aircraft arriving/departing/overflying Abbotsford Class C or D airspace require a transponder code. Recommended methods of obtaining transponder code:

- Filing a VFR flight plan
- Contacting Kamloops FIC at 1-866-541-4101
- Contacting Pacific Radio on frequency 122.5 or 126.7
- Via text message through the NAV CANADA Transponder Code Retrieval (TCR) system.

Medium and High-performance aircraft call YXX Tower in advance of requesting VFR training in the area.