
FLIGHT PLAN & SITE SURVEY

E 171-5355 KITCHENER WATERLOO FLYING DUTCHMEN
R/C CLUB- RIM PARK INDOOR FIELD

May 22, 2026



IMPORTANT NOTICE

Please ensure you have received all required authorizations prior to flight. This Site Survey was created using RPAS Wilco. The user accepts all responsibility for the accuracy of the information.

Terms & Conditions: rpswilco.com/#tnc

Mission Information

E 171-5355 KITCHENER WATERLOO FLYING DUTCHMEN R/C CLUB- RIM PARK INDOOR FIELD

FLIGHT DETAILS

Reference No:	MAAC-171-5355
Project Name:	KITCHENER WATERLOO FLYING DUTCHMEN R/C CLUB
Pilot Name:	MAAC
Pilot Certificate:	
Mission Type:	VLOS
Flight Start:	May 22, 2026 10:42 PM
Flight End:	May 22, 2026 11:42 PM

LOCATION DETAILS

Flight Address:	RIM PARK INDOOR FIELD
Latitude:	43° 31' 7.62" N (43.519)
Longitude:	80° 30' 8.33" W (-80.502)
Field Elevation:	1063 ft MSL
Altitude / Radius:	400 ft / 926 m (0.5 nm)
Classification:	UNCONTROLLED
FIR / Contact:	CZYZ / 905-676-4509

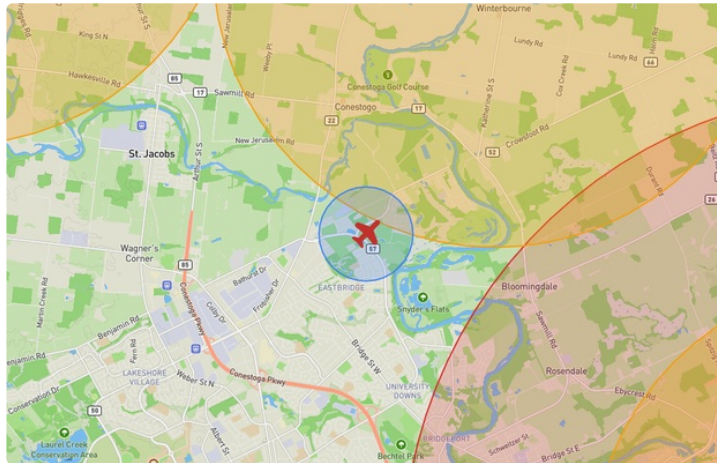
REPORT CONTENTS

Site Survey • Obstacles (if available) • Nearby Aerodromes • Canadian Aviation Regulations • GFA • Aerodrome Supplements • METAR & TAF • NOTAMs • CFS





Flight Map & MODEL Details

MISSION LOCATION SURVEY

FLIGHT AREA MAP



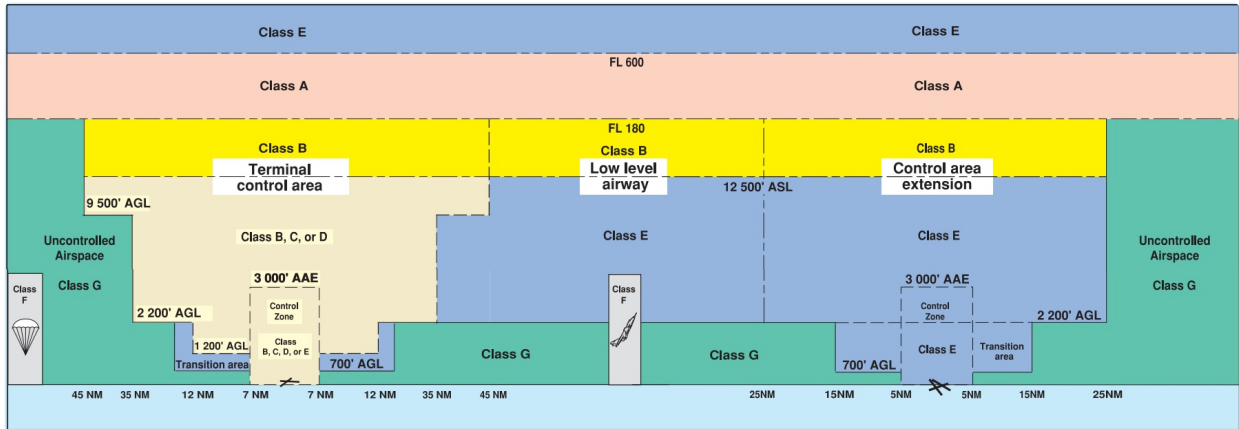
MISSION LOCATION DETAILS

ROLE	LATITUDE	LONGITUDE
 MODEL	43° 31' 7.62" N 43.519	80° 30' 8.33" W -80.502
 Pilot		
 Payload Op.		
 Observer		

Airspace Classification

MISSION LOCATION SURVEY

AIRSPACE MAP



OVERLYING AIRSPACES

Class	Name	Floor	Ceiling
E	Southern Ontario Low Level Control Area c) [CAE]	6500MSL	18000MSL
E	Toronto, ON [TSP]	6500MSL	12500MSL
C	Kitchener/Waterloo, ON [CZ]	SFC	4000MSL
F	CYR533 KITCHENER, ON	SFC	1500MSL
E	3.4.1-43 [TA]	700AGL	18000MSL
E	Southern Ontario Low Level Control Area a) [CAE]	2500MSL	6500MSL
E	T614 Fixed RNAV Route	2200AGL	18000MSL

NEAREST AERODROMES & DISTANCE FROM OPERATION

LARGO WOODS FIELD (CLW6 - AERODROME - Reg)	Lat: 43.567	Long: -80.471	5.898KM	3.185NM	NE
ELMIRA (CNT6 - AERODROME - Reg)	Lat: 43.585	Long: -80.603	10.939KM	5.907NM	NW
WATERLOO (CYKF - AERODROME - Reg)	Lat: 43.461	Long: -80.379	11.896KM	6.423NM	SE

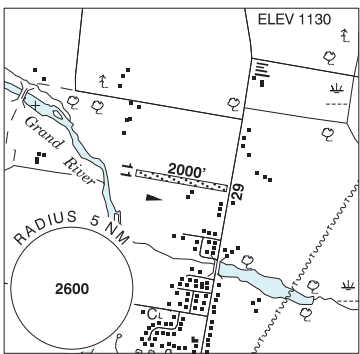
ONTARIO

AERODROME / FACILITY DIRECTORY

CONESTOGO / LARGO WOODS FIELD ON

CLW6

REF	N43 34 00 W80 28 15 2.1SW 10°W (2022) UTC-5(4) Elev 1130' A1900 A5000
OPR	David Wood 519-500-8629 Reg PPR
PF	B-1 C-2,3 D-4,5,6
FLT PLN	
FIC	London 866-WXBRIEF (Toll free within Canada) or 866-541-4104 (Toll free within Canada & USA)
RWY DATA	Rwy 11/29 2000x35 GRASS
RCR	Opr No win maint. Rwy soft in spring.
COMM	
ATF	tfc 123.2 5NM 4200 ASL



CAUTION Marked P-lines aprx 45 AGL on apch to Rwy 29. Trees aprx 25 AGL at Thld 11. Cultivated field both sides of rwy.

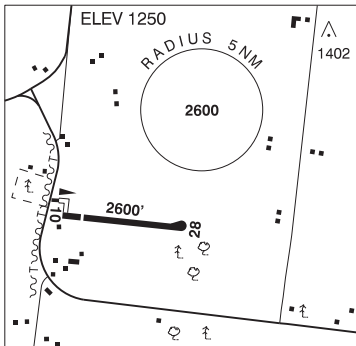
ONTARIO

AERODROME / FACILITY DIRECTORY

ELMIRA ON

CNT6

REF	N43 35 05 W80 36 11 2SW 10°W UTC-5(4) Elev 1250' VTA A5000
OPR	N. Kennedy 519-501-2904 Reg PPR
PF	C-2 D-3,4,5,6
FLT PLN	FIG London 866-WXBRIEF (Toll free within Canada) or 866-541-4104 (Toll free within Canada & USA)
SERVICES	S 7
RWY DATA	Rwy 10/28 2600x25 ASPH Thld 10 displ 400'. RCR Opr No win maint.
COMM	ATF tfc 123.2 5NM 4300 ASL
CAUTION	P-line aprx 35 AGL 350' fr Thld 10 (poles red/white striped and orange balls on wires). Beyond asphalt paved sfc, a sharp slope to the adj grass area may be present.

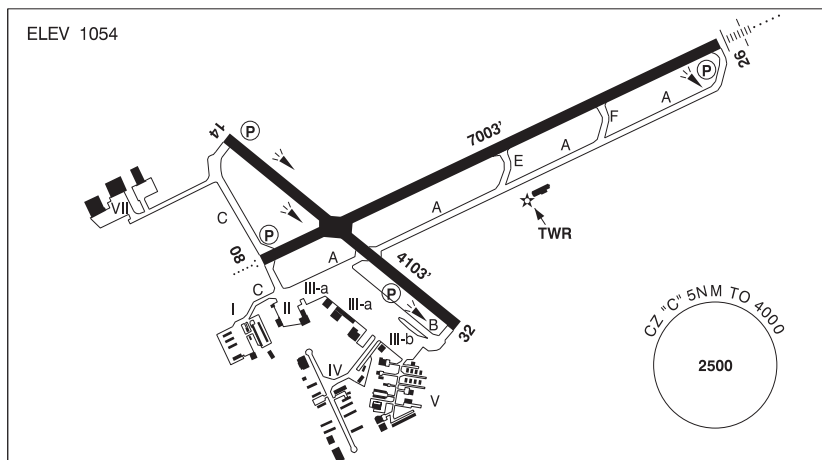


ONTARIO

AERODROME / FACILITY DIRECTORY

KITCHENER / WATERLOO ON

CYKF



REF	N43 27 39 W80 22 43 1E 10°W UTC-5(4) Elev 1054' VTA A5000 LO6 HI5 CAP OC
OPR	Regional Muni of Waterloo 519-648-2256 H24 Cert Ldg fees are applied to all acft above 2500 Kg max tkof wt
PF	A-1,3,6,7,8 B-2 avbl 13-20Z† Mon-Sat C-4,5
CUST	AOE/15 888-226-7277 Gen Avn only AOE/180 12-04Z† 519-648-3858 2hrs PN
FLT PLN	
FIC	London 866-WXBRIEF (Toll free within Canada) or 866-541-4104 (Toll free within Canada & USA)
WX	METAR AUTO H24 (see COMM) WxCam TAF H24, issue times: 0140, 0740, 1340, 1940Z.
SERVICES	
FUEL	100LL, JA (FSII avbl), JA-1 (FSII avbl)
OIL	80, 100
S	1,2,3,4,5,6
ARFF	DESIGNATED CAT 7 for sked pax flt. CAT 7 for non-sked 45 min PN 519-648-3370. PPR for acft 20 seats and abv, exc for diversions or as an altn.
JASU	Air Start
PVT ADV	Chartright 129.475 905-671-4674 ext 125 1100-0130Z† O/T call out chg. Flite Line svc 130.5 519-514-0530 11-01Z† O/T call out chg. Summit Fuel Services 123.5 519-497-8091 12-02Z† O/T call out chg.
MIL CON	Chartright FBO 800-595-9395

ONTARIO

AERODROME / FACILITY DIRECTORY

KITCHENER / WATERLOO ON (Cont'd)

CYKF

RWY DATA	Rwy 14(138°)/32(318°) 4103x148 ASPH Rwy 08(075°)/26(255°) 7003x148 ASPH Rwy 26 down 0.44% RESA: 08 197'; 26 295'
RWY CERT	Rwy 14/32 AGN IIIA Rwy 08 RVR 1200(1/4sm)/Rwy 26 RVR 1200(1/4sm) AGN IIIB
TWY CERT	Twy B AGN IIIA
APRON	Apron I max wingspan 50'. Apron II max wingspan 55'. Turbine acft PPR. Apron IIIA tml apron for air carriers only. Max wingspan 118', larger acft PPR. Apron IIIB GA freight max wingspan 118', larger acft PPR. Apron IV max wingspan 118'. Apron V max wingspan 79'. Apron VII max wingspan 170'.
RCR	Aprt Ops 519-648-3370 CRFI/RSC avbl H24. PCN
LIGHTING	08-AO(TE HI) P2, 14-(TE HI) P1, 26-AN(TE HI) P2, 32-(TE HI) P1 ARCAL-126.0 type K when twr clsd. PAPI Rwy 14, 32 and 26 not avbl on ARCAL, on continuously: low ints at SS minus 30 min to SR minus 30 min, high ints at SR minus 30 min to SS minus 30 min.
COMM	<p>ATIS 125.1 12-04Z‡</p> <p>GND Waterloo 121.8 12-04Z‡</p> <p>TWR Waterloo 126.0 118.55 (V) 12-04Z‡ (emerg only 519-648-3055)</p> <p>MF 126.0 04-12Z‡ 5NM 4000 ASL (CAR 602.98)</p> <p>ARR Toronto Tml 128.275</p> <p>DEP Toronto Tml 128.275</p> <p>PAL Toronto Ctr 128.275</p> <p>AWOS 125.1 04-12Z‡</p>
NAV	<p>DME WATERLOO YWT 115.0 Ch 97 N43 27 31 W80 22 46 (1047')</p> <p>ILS IKF 110.7 (Rwy 26)</p>
PRO	<p>Pursuant to CAR 602.105, the following procedures are in effect. Noise Abatement pro in effect for all acft. See CAP or VTPC. Pilots flying an inst apch pro to Rwy 26 take note: The pro turn overflies Guelph Aprt (circuit hgt 2100 ASL). Pilots flying an inst apch pro to Rwy 26 can anticipate delays and/or restrictions when Rwy 05 & 06R are in use at Toronto/Lester B. Pearson. IFR tng flts are to ctc National Traffic Management Unit (FLOW CTL) 800-268-4831 2 hrs prior to ETD or possible delays. VFR tfc outside CZ watch for apch acft oprg in vic of extended Rwy 26 centreline. VFR dep avoid noise sensitive areas at an operationally safe alt.</p> <p>Pursuant to CAR 602.105, the following procedures are in effect. Rgt hand circuits Rwy 32 (CAR 602.96).</p> <p>No VFR or IFR tng on Rwy 08 btwn 02-12Z‡</p> <p>REDUCED VISIBILITY OPERATING PROCEDURES (RVOP): One acft permitted on manoeuvring area at a time dur RVOP. RVOP avbl 12-04Z‡ only. For VFR ARR/DEP rtes see Kitchener/Waterloo VTPC.</p>
CAUTION	Winch-launched hang gliders, cable to 2000 AGL N43 33 18 W080 31 31 near St. Jacobs aprx 8.5NM NW of A/D.