
FLIGHT PLAN & SITE SURVEY

G 896-5456 OTTAWA GLIDER GUIDERS- PETERSEN'S
TURF FARMS

May 22, 2026



IMPORTANT NOTICE

Please ensure you have received all required authorizations prior to flight. This Site Survey was created using RPAS Wilco. The user accepts all responsibility for the accuracy of the information.

Terms & Conditions: rpaswilco.com/#tnc

Mission Information

G 896-5456 OTTAWA GLIDER GUIDERS- PETERSEN'S TURF FARMS

FLIGHT DETAILS

Reference No:	MAAC-896-5456
Project Name:	OTTAWA GLIDER GUIDERS
Pilot Name:	MAAC
Pilot Certificate:	
Mission Type:	VLOS
Flight Start:	May 22, 2026 10:42 PM
Flight End:	May 22, 2026 11:42 PM

LOCATION DETAILS

Flight Address:	PETERSEN'S TURF FARMS
Latitude:	45° 11' 56.10" N (45.199)
Longitude:	75° 34' 59.40" W (-75.583)
Field Elevation:	289 ft MSL
Altitude / Radius:	400 ft / 926 m (0.5 nm)
Classification:	UNCONTROLLED
FIR / Contact:	CZUL / 514-633-3365

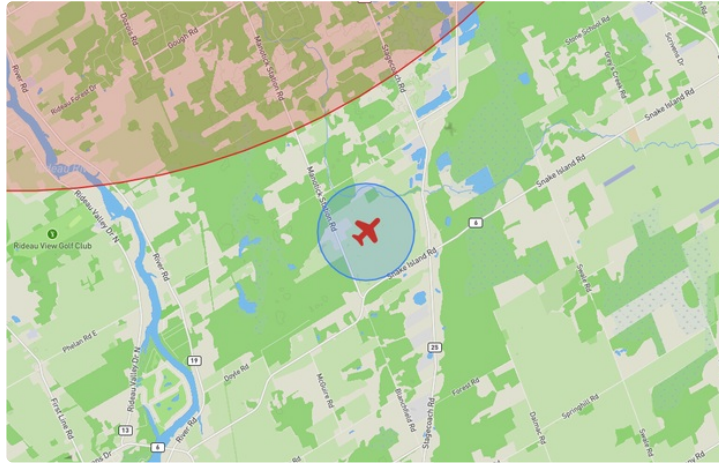
REPORT CONTENTS

Site Survey • Obstacles (if available) • Nearby Aerodromes • Canadian Aviation Regulations • GFA • Aerodrome Supplements • METAR & TAF • NOTAMs • CFS





Flight Map & MODEL Details

MISSION LOCATION SURVEY

FLIGHT AREA MAP



MISSION LOCATION DETAILS

ROLE	LATITUDE	LONGITUDE
 MODEL	45° 11' 56.10" N 45.199	75° 34' 59.40" W -75.583
 Pilot		
 Payload Op.		
 Observer		

Airspace Classification

MISSION LOCATION SURVEY

AIRSPACE MAP



OVERLYING AIRSPACES

Class	Name	Floor	Ceiling
E	3.5.2-5 [CAE]	6000AGL	18000MSL
E	Ottawa, ON b) [CAE]	2500AGL	18000MSL
E	Ottawa, ON e) [TSP]	6500MSL	12500MSL
E	T781 Fixed RNAV Route	2200AGL	18000MSL
E	T634 Fixed RNAV Route	2200AGL	18000MSL
E	Ottawa, ON b) [TSP]	2500MSL	4000MSL
F	CYA528 (S,T) KEMPTVILLE, ON	SFC	4000MSL
F	CYA534 (S) KARS, ON	SFC	2500MSL
C	Ottawa, ON g) [TCA]	1500MSL	2500MSL
B	Ottawa, ON a) [TCA]	12500MSL	18000MSL
C	Ottawa, ON b) [TCA]	5000MSL	12500MSL
C	Ottawa, ON c) [TCA]	4000MSL	5000MSL
C	Ottawa, ON d) [TCA]	3000MSL	4000MSL
C	Ottawa, ON e) [TCA]	2500MSL	3000MSL
E	T636 Fixed RNAV Route	2200AGL	18000MSL
C	Ottawa/Macdonald-Cartier Intl, ON a) [CZ]	SFC	2000MSL
C	Ottawa/Macdonald-Cartier Intl, ON b) [CZ]	2000MSL	3000MSL
E	T614 Fixed RNAV Route	2200AGL	18000MSL
E	T749 Fixed RNAV Route	2200AGL	18000MSL

NEAREST AERODROMES & DISTANCE FROM OPERATION

RIDEAU VALLEY AIR PARK (CPL3 - AERODROME - Reg)	Lat: 45.1	Long: -75.633	11.681KM	6.307NM	S
MACDONALD-CARTIER INTL (CYOW - AERODROME - Cert)	Lat: 45.323	Long: -75.667	15.235KM	8.226NM	NW
EMBRUN (CPR2 - AERODROME - Reg)	Lat: 45.241	Long: -75.299	22.776KM	12.298NM	E

ONTARIO

AERODROME / FACILITY DIRECTORY

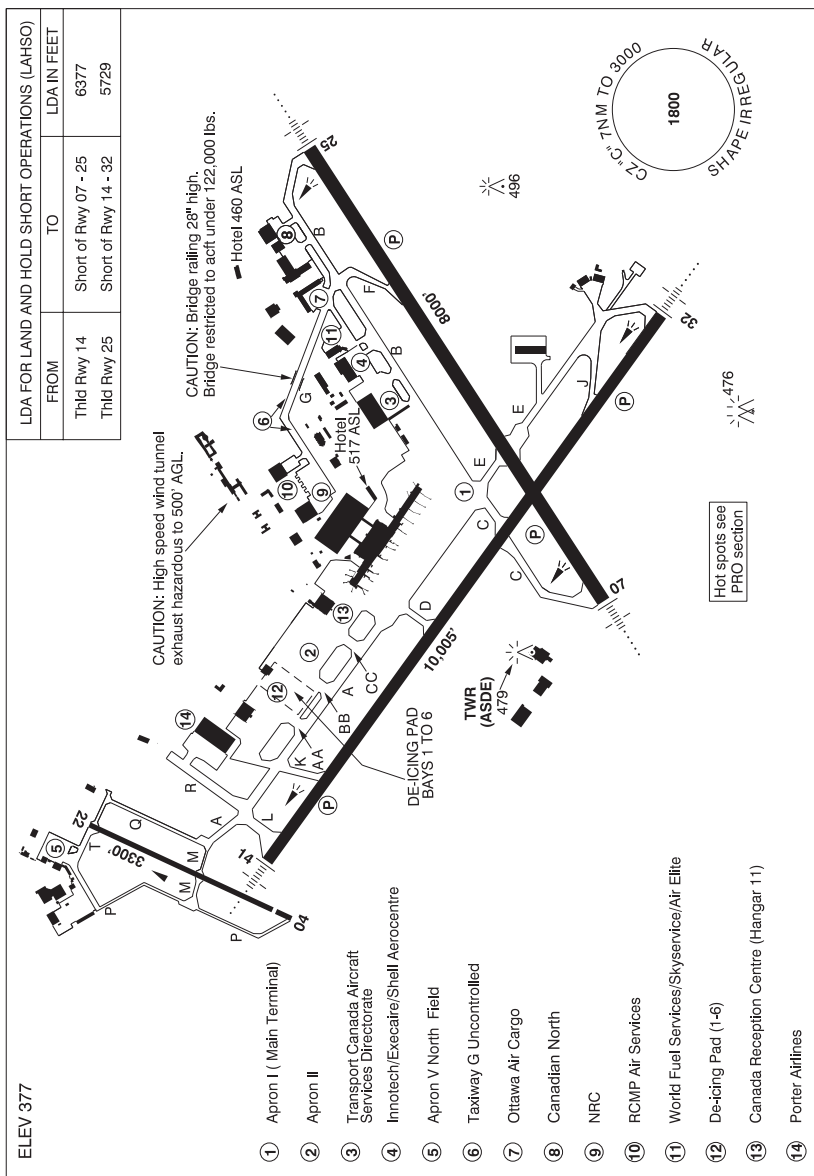
KARS / RIDEAU VALLEY AIR PARK ON

CPL3

REF	N45 06 W75 38 3S 14°W UTC-5(4) Elev 286' A1905 A5000 A5002	
OPR	Chris Williams 613-296-3391 Reg PPR	
PF	C-1,2,4,5 D-3,6	
FLT PLN	(bil) FIC Québec 866-GOMÉTÉO or 866-WXBRIEF (Toll free within Canada) or 866-541-4105 (Toll free within Canada & USA)	
RWY DATA	Rwy 08/26 1800x100 GRASS RCR Opr No win maint. May be soft in spring.	
COMM	ATF tfc 123.4 5NM 3300 ASL excluding the airspace that lies within Ottawa TCA class C airspace	
PRO	Glider activity in area.	

OTTAWA / MACDONALD-CARTIER INTL ON

CYW



REF	N45 19 21 W75 40 02 Adj S 14°W UTC-5(4) Elev 377' A1905 A5000 A5002 LO6 LO7 HI5 T2 CAP OC
OPR	Ottawa Macdonald-Cartier Intl Apt Authority 613-248-2200 H24 Cert
PF	A-1,2,3,6,7 C-4,5

ONTARIO

AERODROME / FACILITY DIRECTORY

OTTAWA / MACDONALD-CARTIER INTL ON (Cont'd)

CYOW

CUST	AOE 888-226-7277 Pilots to call appropriate fixed base opr (FBO) prior to ldg on pvt adv freq & request cust be advised of intended location for clnc. Cust clnc at Apron II 12-05Z† 1 hr PN.
FLT PLN	
 FIC	(bil) Québec 866-GOMÉTÉO or 866-WXBRIEF (Toll free within Canada) or 866-541-4105 (Toll free within Canada & USA)
 ACC	Montreal 514-633-3211 or 800-633-1353, all Flt Plns, IFR tng PPR
 WX	METAR H24
 DUAT	TAF H24, issue times: 00, 03, 06, 09, 12, 15, 18 & 21Z. Ottawa Flying Club; World Fuel Services/Skyservice/Air Elite; Innotech/Execaire/Shell Aerocentre
SERVICES	
 FUEL	100LL, JA-1
 OIL	All
 S	1(ltd), 2,3,4(ltd)
 ARFF	DESIGNATED CAT 8
 SUP FL	LHOX PN, D & A-ice
 PVT ADV	Ottawa Flying Club (North Field) 123.35 12-02Z†; Innotech/Execaire/Shell Aerocentre (South Field) 123.0 11-03Z†; World Fuel Services/Skyservice/Air Elite 129.85 10-05Z†, O/T 613-739-3776
 MIL CON	Sky Service FBO Inc. 613-739-3776
RWY DATA	Rwy 14(140°)/32(320°) 10,005x197 grooved ASPH Rwy 07(071°)/25(251°) 8000x197 grooved ASPH Rwy 04(039°)/22(219°) 3300x75 ASPH Thld 04 displ 250'. Rwy 04 down 0.36%. Rstd to acft not exceeding 60,000 lbs. Sked pax svc not auth. RESA: 07/25 984'; 14/32 1000' Abv 15°C, no acft with more than 100 pax or over 85,000 lbs is auth to perform 180° turns on any rwy without perms 613-248-2013
RWY CERT	Rwy 14 RVR 1200(1/4sm)/Rwy 32 RVR 1200(1/4sm) AGN V Rwy 07 RVR 1200(1/4sm)/Rwy 25 RVR 1200(1/4sm) AGN V Rwy 04/22 AGN II
TWY CERT	Twy A: AGN V fr Apron I to Twy L & AGN II fr Twy L to Twy M Twy G AGN IIIB Twy: M, P, Q, T AGN II
TWY	Twy G: Uncontrolled. Bridge max weight 122,000 lbs. Twy M, P, Q and T rstd to acft not exceeding 60,000 lbs Twy R: Uncontrolled.
APRON	De-icing Bays Bay 1, 3, 4, 6 - May be used by acft with wingspans 36m (118') or less Bay 2 - May be used by acft with the wingspans 65m (213') or less. If CC used, the Taxi must be on the East taxi line only to/from Bay 2. If K used, the taxi must be on the West taxi line only to/from Bay 2. Bay 5 - May be used by acft with the wingspan 65m (213') or less. If CC used, taxi must be on the East taxi line only to/from Bay 5. If K used, the taxi must be on the West taxi line only to/from Bay 5.
RCR	Opr CRFI. PCN
LIGHTING	07-AN(TE HI) P3, 25-AN(TE HI) P3, 14-AN(TE HI) P3, 32-AN(TE HI) P3

ONTARIO

AERODROME / FACILITY DIRECTORY

OTTAWA / MACDONALD-CARTIER INTL ON (Cont'd)

CYOW

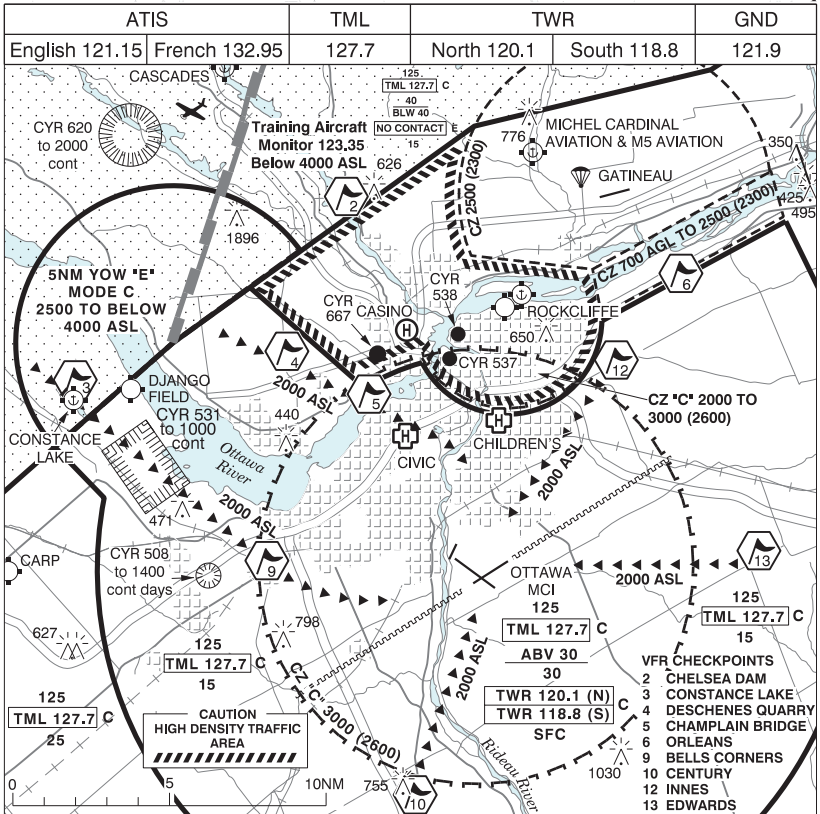
COMM	(bil)
RCO	Québec rdo 123.15 (FISE) 126.7 (bcst)
ATIS	(English) 121.15 (French) 132.95
CLNC DEL	Ottawa 119.4 all dep acft to ctc clnc del
GND	Ottawa 121.9
TWR	Ottawa 118.8 (VFR South) 120.1 (VFR North) 118.8 341.3 (V) (emerg only 613-248-3814)
TML	Ottawa 127.7
ARR	Ottawa ARR 135.15
DEP	Ottawa DEP 128.175
NAV	
DME	YOW 114.6 Ch 93 N45 26 30 W75 53 49 (482')
DME	IOW 109.5 Ch 32 N45 18 50 W75 40 01 (398')
ILS	IOW 109.5 (Rwy 07) RVR IRP 110.3 (Rwy 32) RVR
PRO	<p>Pilots should refer to Canadian Airport Charts (CAC) to obtain details on established hot spots, prior to operating on maneuvering areas. CAC are available for free on the NAV CANADA website.</p> <p>ATC: IFR CLNC ACKNOWLEDGEMENT: IFR clnc read back with Ottawa twr clnc del shall include acft call sign, assigned SID name and transponder code. CIRCUITS: Rgt hand circuits Rwy 07, 14 & 22 (CAR 602.96). FOD: The grade of sand which is used extensively on the aprt dur win may pose a FOD hazard to some acft. Formations and other line astern flt ops should adopt pro to avoid ingestion. NOISE ABATEMENT PROCEDURES: Turbojet and turbopan acft; refer to CAP; propeller acft: dep Rwy 32 to 1500 ASL before proceeding on crs. Circuit hgt 1500 ASL Rwy 04-14 to maintain 1500 ASL, wx permitting, until established on final apch. Tng flt permitted 0815-2359 lcl time, no VFR tng circuits on Rwy 14/32 below 1500 ASL, no practice rwy pro to Rwy 14. For practice IFR apchs to active IFR rwy dur peak hrs 1315-1400Z± & 1930-2400Z± Mon-Fri, ctc Montreal Flight Planning 514-633-3211 or 800-633-1353, for possible delays & rwy info. Turbo-jet take-off and landing not permitted Rwy 04/22.</p> <p>VFR ARR/DEP ROUTES: All VFR acft should follow arr/dep routes, unless otherwise specified by ATC. See OTTAWA M.-C.I. VFR DEPARTURE PROCEDURES CHART and OTTAWA M.-C.I. VFR ARRIVAL PROCEDURES CHART for additional details.</p> <p>DE-ICING OPERATIONS</p> <ol style="list-style-type: none"> 1. Ctc PAD CONTROL on 122.925 30 min prior to dep if de-icing is rqrd. Notify of any special treatments prior to taxi to CDF. 2. Ctc Ottawa GND after pushback for taxi to CDF. 3. Hold short of the CDF on K, AA, BB or CC and ctc PAD CONTROL for further taxi. 4. Follow instructions and electronic sign boards to de-icing bays. 5. Stop on the 2nd (illuminated) yellow stop bar, immediately set brakes and advise PAD CONTROL. DO NOT MOVE ACFT. This will allow positioning of trucks while you configure your aircraft. 6. Once instructed switch to ICEMAN on 122.350, confirm brakes are set, confirm treatment and that acft is configured for treatment (engines at idle/props feathered/pacs off). If you can't reduce engines to idle ICEMAN must know, de-icing may not be possible with running engines. 7. After de-icing, configure acft for taxi, however, DO NOT MOVE ACFT. 8. Once instructed, ctc PAD CONTROL for taxi. 9. Follow instructions to designated exit point. Holding short of Twy A, ctc GND 121.9

OTTAWA / MACDONALD-CARTIER INTL ON (Cont'd)

CYOW

PRO (Cont'd)	<p>VFR FLIGHTS IN OTTAWA MACDONALD-CARTIER CLASS C CZ AND TCA TERMINAL.</p> <p>In order to minimize delays, ATC frequency congestion and for better airspace management, as well as to improve safety, a procedure is available allowing VFR aircraft to obtain a transponder code prior to take off. This mandatory procedure applies to VFR aircraft that did not file a flight plan or flight itinerary with Nav Canada and wishing to penetrate or operate in the Ottawa/MacDonald-Cartier Class C and terminal Class C airspace. All acft not respecting mandatory transponder code procedure will not be accepted in Ottawa/MacDonald-Cartier Class C CZ and TCA C airspace.</p> <p>To obtain a transponder code: A discrete transponder code shall be obtained at least 30 minutes prior to the flight taking off toward Ottawa/MacDonald-Cartier Class C CZ and TCA airspace, by contacting the Montreal ACC at 866-VFR-CODE (866-837-2633), or the FIC at 1-866-GOMETEO or 1-866-WX BRIEF, and providing ATC with flight information. Aircraft departing CYUL, CYJN, CYHU, CYOW, CYMX or CYND will obtain their transponder code from the Control Tower or FSS.</p> <p>Flight procedure:</p> <ol style="list-style-type: none"> 1. Set your transponder to the assigned code prior to your first communication with ATC. 2. To the extent possible, ctc ATC at least 5NM prior to entering Ottawa/MacDonald-Cartier Class C and terminal Class C airspace. <p>OTTAWA CZ AIRSPACE SPLIT FOR VFR FLIGHTS</p> <p>YOW CZ is divided into two sectors with separate frequencies. Contact OTTAWA TWR on 120.1 when North of Rwy 07/25 extended centreline and OTTAWA TWR on 118.8 when South of Rwy 07/25 extended centreline or on final for Rwy 07/25. Holding short of Rwy 04/22, contact OTTAWA TWR on 120.1 when ready for take-off.</p>
CAUTION	Migratory birds in vic of aprt Mar-Apr, Sep-Oct.

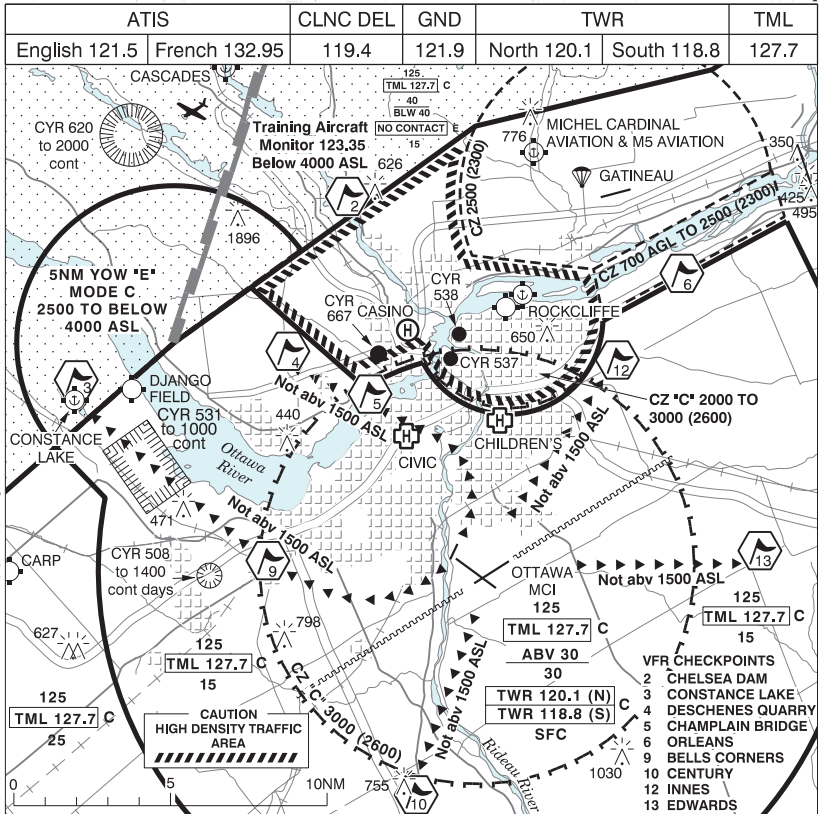
OTTAWA M.-C.I. VFR ARRIVAL PROCEDURES CHARTS



PROCEDURES:

- Bells Corners Arrival:** Proceed via W side of Ottawa River to CONSTANCE LAKE, then direct BELLS CORNERS at 2000 ASL.
- Champlain Bridge Arrival:** Proceed via E side of Ottawa River to DESCHENES QUARRY & then direct CHAMPLAIN BRIDGE at 2000 ASL.
- Century Arrival:** Proceed towards CENTURY at 2000 ASL.
- Edwards Arrival:** Proceed towards EDWARDS at 2000 ASL.
- Innes Arrival:** Proceed towards INNES at 2000 ASL.

OTTAWA M.-C.I. VFR DEPARTURE PROCEDURES CHARTS

**PROCEDURES:**

Unless otherwise instructed by ATC contact North Tower on 120.1 when ready for take-off.

Bells Corners Departure: Climb rwy hdg to Rideau River remaining N of Rwy 25 centerline at all times. At Rideau River, turn rgt hdg 250, climb to 1300 ASL. At 1300 ASL, continue climb not abv 1500 ASL direct BELLS CORNERS and then to CONSTANCE LAKE. Contact Ottawa Terminal on 127.7 at BELLS CORNERS.

Champlain Bridge Departure: Proceed direct CHAMPLAIN BRIDGE then to DESCHENES QUARRY. Climb not abv 1500 ASL. Contact Ottawa Terminal on 127.7 at CHAMPLAIN BRIDGE.

Century Departure: Proceed direct CENTURY. Climb not abv 1500 ASL.

Edwards Departure: Proceed direct EDWARDS. Climb not abv 1500 ASL.

Innes Departure: Proceed direct INNES. Climb not abv 1500 ASL.

ONTARIO

AERODROME / FACILITY DIRECTORY

OTTAWA M.-C.I. VFR TERMINAL PROCEDURES CHART (Cont'd)

NAME	IDENT	LAT/LONG
BELLS CORNERS	VCBCR	N45° 19' 12" W075° 50' 00"
CENTURY	VCNTY	N45° 11' 22" W075° 43' 16"
CHAMPLAIN BRIDGE	VCCHB	N45° 24' 30" W075° 45' 30"
CHELSEA DAM	VCHL	N45° 30' 48" W075° 46' 32"
CONSTANCE LAKE	VCCON	N45° 25' 00" W075° 59' 00"
CUMBERLAND	VCMBL	N45° 31' 00" W075° 24' 36"
DESCHENES QUARRY	VCQRY	N45° 25' 48" W075° 49' 12"
EDWARDS	VCEDW	N45° 19' 23" W075° 27' 58"
INNES	VCINS	N45° 25' 25" W075° 34' 47"
LAC MCGREGOR	VCPOU	N45° 38' 37" W075° 38' 52"
ORLEANS	VCORL	N45° 28' 34" W075° 31' 27"
RUSSELL	VCRSL	N45° 15' 27" W075° 22' 00"
THURSO	VCGUY	N45° 35' 55" W075° 14' 43"

VFR FLIGHTS IN OTTAWA MACDONALD-CARTIER CLASS C CZ AND TCA TERMINAL

In order to minimize delays, ATC frequency congestion and for better airspace management, as well as to improve safety, a procedure is available allowing VFR aircraft to obtain a transponder code prior to take off. This mandatory procedure applies to VFR aircraft that did not file a flight plan or flight itinerary with Nav Canada and wishing to penetrate or operate in the Ottawa/MacDonald-Cartier Class C and terminal Class C airspace. All acft not respecting mandatory transponder code procedure will not be accepted in Ottawa/MacDonald-Cartier Class C CZ and TCA C airspace.

To obtain a transponder code:

A discrete transponder code shall be obtained at least 30 minutes prior to the flight taking off toward Ottawa/MacDonald-Cartier Class C CZ and TCA airspace, by contacting the Montreal ACC at 866-VFR-CODE (866-837-2633), or the FIC at 1-866-GOMETEO or 1-866-WX BRIEF, and providing ATC with flight information. Aircraft departing CYUL, CYJN, CYHU, CYOW, CYMX or CYND will obtain their transponder code from the Control Tower or FSS.

Flight procedure:

1. Set your transponder to the assigned code prior to your first communication with ATC.
2. To the extent possible, ctc ATC at least 5NM prior to entering Ottawa/MacDonald-Cartier Class C and terminal Class C airspace.

ONTARIO

AERODROME / FACILITY DIRECTORY

OTTAWA / EMBRUN ON

CPR2

REF	N45 14 28 W75 17 55 2SW 14°W UTC-5(4) Elev 230' A1905 A5000 A5002	
OPR	Embrun Airpark Inc. / Serge Boucher 613-443-1469 Reg Ltd hrs	
PF	B-1 C-2,3,4,5,6	
FLT PLN	(bil) FIC Québec 866-WXBRIEF or (French) 866-GOMÉTÉO (Toll free within Canada) or 866-541-4105 (Toll free within Canada & USA)	
RWY DATA	Rwy 08/26 2260x50 GRASS	
RCR	Opr No win maint	
COMM	ATF Embrun tfc 123.2 5NM 3200 ASL excluding the airspace that lies within Ottawa TCA class C airspace.	
PRO	VFR Codes: In order to minimize delays, ATC freq congestion and for better airspace management, as well as to improve safety, ctc the Montreal ACC at 866-VFR-CODE (866-837-2633), or the FIC at 1-866-GOMETEO or 1-866-WX BRIEF, to provide ATC with info pertaining to your flt to obtain your transponder code at least 30 min prior to a flight into Ottawa Class C airspace.	
CAUTION	Three twrs: 547 ASL aprx 2.5NM NNW, 560 ASL aprx 1.5NM NNW & 580 ASL aprx 5NM NNW of aprt. P-line 35', aprx 700' fr thld Rwy 26. P-line 30', aprx 600' fr thld Rwy 08. Lgtd wind turbines to 948 ASL (657 AGL) aprx 2.5NM SE of A/D.	