
FLIGHT PLAN & SITE SURVEY

N 278-5696 CLUB AIR MODELISTE- École secondaire Les
Etchemins - Charny

May 22, 2026



IMPORTANT NOTICE

Please ensure you have received all required authorizations prior to flight. This Site Survey was created using RPAS Wilco. The user accepts all responsibility for the accuracy of the information.

Terms & Conditions: rpswilco.com/#tnc

Mission Information

N 278-5696 CLUB AIR MODELISTE- ÉCOLE SECONDAIRE LES ETCHEMINS - CHARNY

FLIGHT DETAILS

Reference No:	MAAC-278-5696
Project Name:	CLUB AIR MODELISTE
Pilot Name:	MAAC
Pilot Certificate:	
Mission Type:	VLOS
Flight Start:	May 22, 2026 10:44 PM
Flight End:	May 22, 2026 11:44 PM

LOCATION DETAILS

Flight Address:	École secondaire Les Etchemins - Charny
Latitude:	46° 43' 9.42" N (46.719)
Longitude:	71° 16' 10.10" W (-71.269)
Field Elevation:	210 ft MSL
Altitude / Radius:	400 ft / 926 m (0.5 nm)
Classification:	UNCONTROLLED
FIR / Contact:	CZUL / 514-633-3365

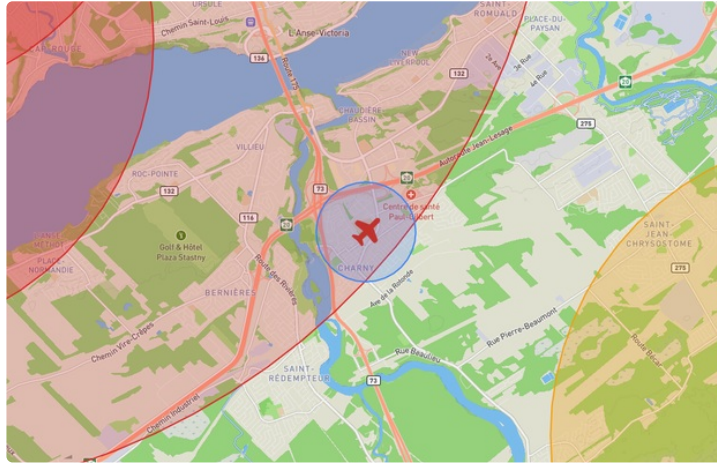
REPORT CONTENTS

Site Survey • Obstacles (if available) • Nearby Aerodromes • Canadian Aviation Regulations • GFA • Aerodrome Supplements • METAR & TAF • NOTAMs • CFS





Flight Map & MODEL Details

MISSION LOCATION SURVEY

FLIGHT AREA MAP



MISSION LOCATION DETAILS

ROLE	LATITUDE	LONGITUDE
 MODEL	46° 43' 9.42" N 46.719	71° 16' 10.10" W -71.269
 Pilot		
 Payload Op.		
 Observer		

Airspace Classification

MISSION LOCATION SURVEY

AIRSPACE MAP



OVERLYING AIRSPACES

Class	Name	Floor	Ceiling
C	Québec, QC a) [TCA]	3500MSL	12500MSL
C	Québec/Jean Lesage Intl, QC [CZ]	SFC	3500MSL
C	Québec, QC b) [TCA]	1500MSL	12500MSL
C	Québec, QC d) [TCA]	3500MSL	12500MSL
E	T914 Fixed RNAV Route	2200AGL	18000MSL
F	CYA616 (T) QUÉBEC, QC	SFC	4000MSL
E	T603 Fixed RNAV Route	2200AGL	18000MSL
F	CYR 6.3.0-6 NATIONAL ASSEMBLY OF QUEBEC, QC	SFC	1300MSL
E	T699 Fixed RNAV Route	2200AGL	18000MSL
C	Québec, QC c) [TCA]	2500MSL	12500MSL
F	CYR672 ORSAINVILLE, QC	SFC	1200MSL
E	T660 Fixed RNAV Route	2200AGL	18000MSL
E	T677 Fixed RNAV Route	2200AGL	18000MSL
E	T781 Fixed RNAV Route	2200AGL	18000MSL
E	Québec/Jean Lesage Intl, QC [TA]	2200AGL	18000MSL
E	3.5.2-5 [CAE]	6000AGL	18000MSL

NEAREST AERODROMES & DISTANCE FROM OPERATION

ST-JEAN CHRYSOSTOME (CSG5 - AERODROME - Reg)	Lat: 46.685	Long: -71.152	9.747KM	5.263NM	SE
LAC ST-AUGUSTIN (CSN8 - WATERDROME - Cert)	Lat: 46.751	Long: -71.394	10.151KM	5.481NM	W
JEAN LESAGE INTL (CYQB - AERODROME - Cert)	Lat: 46.791	Long: -71.393	12.346KM	6.666NM	NW

QUEBEC

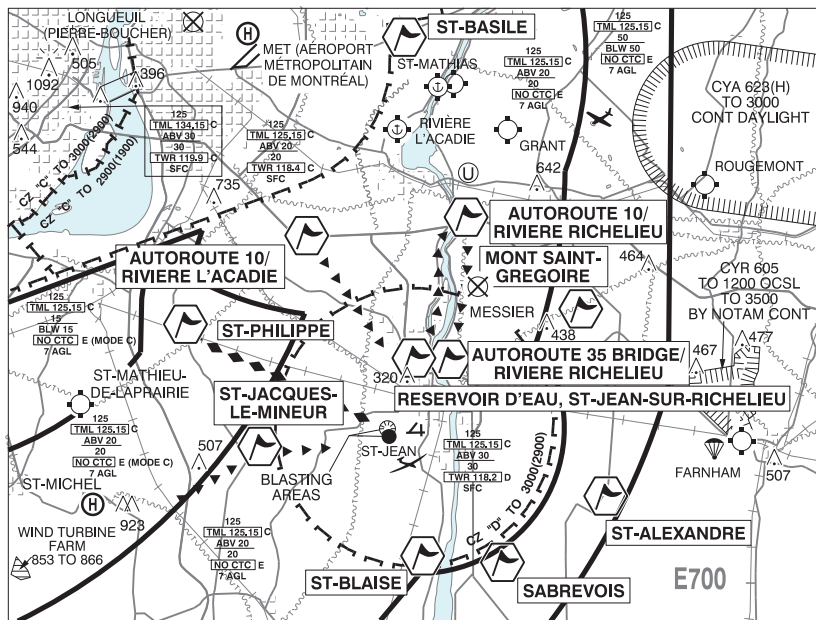
AERODROME / FACILITY DIRECTORY

ST-JEAN CHRYSOSTOME QC

CSG5

REF	N46 41 07 W71 09 06 2.6SE 17°W UTC-5(4) Elev 325' A5002	
OPR	Aérodrome de St-Jean Chrysostome 418-834-6508 Reg 48 hr PPR	
PF	A-1,2 C-3,4,5 D-6	
FLT PLN	(bil)	
FIC	Québec 866-GOMÉTÉO or 866-WXBRIEF (Toll free within Canada) or 866-541-4105 (Toll free within Canada & USA)	
SERVICES		
FUEL	100LL, JA	
S	1,2,4,5	
RWY DATA	Rwy 02/20 3300x40 ASPH/GRVL, centre 30' ASPH Thld 02 displ 300'. Rwy 06/24 2700x50 GRVL/ASPH 500' ASPH Thld 06 displ 500'.	
RCR	Opr No win maint.	
LIGHTING	02-AS(TE ME), 20-AS(TE ME) first 300' Rwy 02 not lgtd	
COMM		
ATF	tfc 123.2 5NM 1500 ASL excluding CYQB CZ and Québec TCA	
PRO	Rgt hand circuits Rwy 24 (CAR 602.96) VFR Codes: In order to minimize delays, ATC freq congestion and for better airspace management, as well as to improve safety, ctc the Montreal ACC at 877-YUL-CODE (877-985-2633), or the FIC at 1-866-GOMETEO or 1-866-WX BRIEF, to provide ATC with info pertaining to your flt to obtain your transponder code at least 30 min prior to a flight into Quebec Class C airspace.	
CAUTION	P-line on apch Rwy 02. A/D status unkn aprx 1.6NM S of A/D. RPAS 1NM SW of A/D.	

ST-JEAN VFR TERMINAL PROCEDURES CHART



NAME	IDENT	LAT/LONG
AUTOROUTE 10 / RIVIERE L'ACADIE	VCACD	N45° 24' 28" W073° 22' 06"
AUTOROUTE 10 / RIVIERE RICHELIEU	VCRIC	N45° 24' 55" W073° 14' 34"
AUTOROUTE 35 BRIDGE / RIVIERE RICHELIEU	VCRLU	N45° 19' 37" W073° 15' 36"
MONT SAINT-GREGOIRE	VCGGR	N45° 21' 24" W073° 08' 55"
RESERVOIR D'EAU, ST-JEAN-SUR-RICHELIEU	VCRSV	N45° 19' 39" W073° 17' 23"
SABREVOIS	VCSBR	N45° 12' 24" W073° 13' 44"
ST-ALEXANDRE	VCALX	N45° 14' 23" W073° 06' 59"
ST-BASILE	VCSTB	N45° 31' 36" W073° 17' 20"
ST-BLAISE	VCBLA	N45° 13' 14" W073° 18' 04"
ST-JACQUES-LE-MINEUR	VCSJM	N45° 16' 29" W073° 25' 11"
ST-PHILIPPE	VCLPR	N45° 21' 10" W073° 28' 29"

CANADA WATER AERODROME SUPPLEMENT

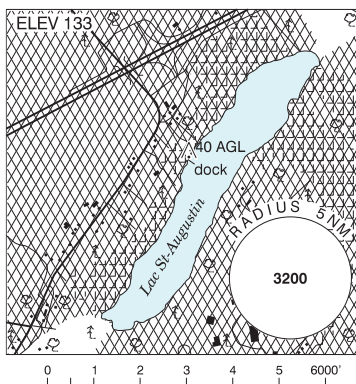
Effective 0901Z 19 March 2026 to 0901Z 18 February 2027

AERODROME/FACILITY DIRECTORY B205

QUÉBEC/LAC ST-AUGUSTIN QC

CSN8

REF	N46 45 05 W71 23 39 6SW 17°W UTC-5(4) Elev 133' A5002
OPR	Luc Forgues 418-955-4455 Cert PPR
PF	B-1,2,3,7 C-4,5,6
FLT PLN	(bil) FIG Québec 866-GOMÉTÉO or 866-WXBRIEF (Toll free within Canada) or 866-541-4105 (Toll free within Canada & USA)
SERVICES	
FUEL	100LL 24 hrs PN
S	4,5,6

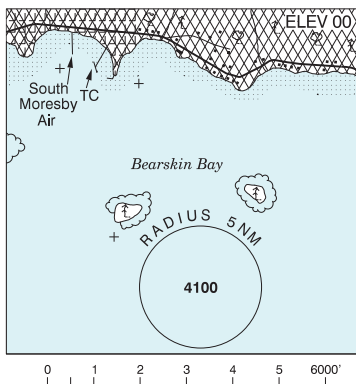


A/D DATA	Open water May-Oct.
COMM	(bil)
RADIO	Québec 123.55 (Above 12,500 ASL) 126.7
ATIS	134.6 128.3
GND	Québec 121.9
TWR	Québec 118.65 236.6 (E) at land A/D 2NM N
PRO	Touch & go forbidden. See Québec/Lac St-Augustin VTPC for effective Noise Operating Restrictions & Noise Abatement Procedures. Ctc Québec gnd prior tkof. If unable, call Québec twr at 418-871-7814.
CAUTION	Land A/D 2NM N.

QUEEN CHARLOTTE CITY BC

CAQ6

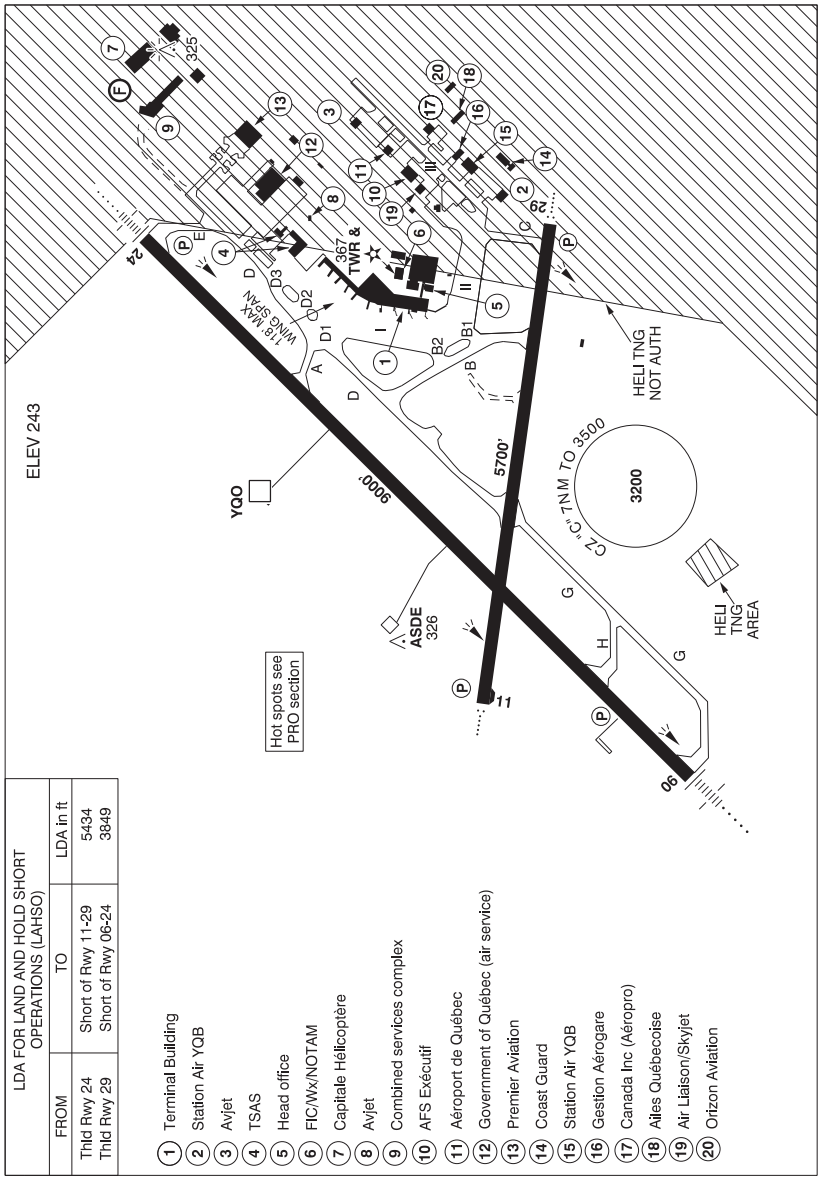
REF	N53 15 W132 04 Adj E 19°E (2012) UTC-8(7) Elev 00' A5013
OPR	Queen Charlotte City Harbour Authority 250-559-4650 Reg
PF	C-1 D-3,5,6
FLT PLN	FIG Kamloops 866-WXBRIEF (Toll free within Canada) or 866-541-4101 (Toll free within Canada & USA)
SERVICES	
FUEL	100LL 250-559-4222 PN
S	7



A/D DATA	Tidal range 25', depth 6', rock & mud bottom. Ramp aprx 2NM E. Restricted area behind breakwater. Dock fees ctc Opr.
COMM	
ATF	tfc 123.2 5NM 3000 ASL See PRO section
NAV	
VOR/DME	SANDSPIT YZP 114.1 Ch 88 N53 15 08 W131 48 25 (46')
PRO	Noise sensitive area 1.5NM E & W of dock. No overflight below 2000 AGL. Arr/dep over water. Avoid circuits over town. Ctc Terrace rdo 122.3 296.2 prior to entry into Sandspit CZ. Special VFR tfc advsy procedures apply outside ATF zone, see Section C – Areas With Discrete Air-To-Air Frequencies.

QUÉBEC / JEAN LESAGE INTL QC

CYQB



LDA FOR LAND AND HOLD SHORT OPERATIONS (LAHSO)		
FROM	TO	LDA in ft
Thld Rwy 24	Short of Rwy 11-29	5434
Thld Rwy 29	Short of Rwy 06-24	3649

- 1 Terminal Building
- 2 Station Air YQB
- 3 Avjet
- 4 TSAS
- 5 Head office
- 6 FIC/Wx/NOTAM
- 7 Capitale Hélicoptère
- 8 Avjet
- 9 Combined services complex
- 10 AFS Exécutif
- 11 Aéroport de Québec
- 12 Government of Québec (air service)
- 13 Premier Aviation
- 14 Coast Guard
- 15 Station Air YQB
- 16 Gestion Aéroport
- 17 Canada Inc (Aéropro)
- 18 Ailes Québécoise
- 19 Air Liaison/Skyjet
- 20 Orizon Aviation

REF	N46 47 28 W71 23 36 6WSW 16°W (2013) UTC-5(4) Elev 243' A5002 LO6 LO7 LO8 HI5 HI6 T2 CAP OC
OPR	Aéroport de Québec Inc 418-640-0707 H24 Cert Mil (Mil PN 72 hrs)
PF	A-2,3,6 10-05Z‡ A-1 C-4,5

QUEBEC

AERODROME / FACILITY DIRECTORY

QUÉBEC / JEAN LESAGE INTL QC (Cont'd)

CYQB

CUST	AOE 888-226-7277 H24 Dec 1-Apr 30, 13-05Z† May 1-Nov 30
FLT PLN	(bil)
 FIC	Québec 866-GOMÉTÉO or 866-WXBRIEF (Toll free within Canada) or 866-541-4105 (Toll free within Canada & USA)
 ACC	Montreal 514-633-3211 or 800-633-1353, all Flt Plns, IFR tng PPR
 WX	METAR H24. TAF H24, issue times: 00, 06, 12, 18Z.
SERVICES	Call out chg may be levied for one or more svcs
 FUEL	100LL, JA-1
 OIL	All
 S	1,2,4,5,6
 ARFF	DESIGNATED CAT 7
 SUP FL	D & A-ice
 JASU	Elect Start 10/15
 PVT ADV	Avjet 123.0/122.95 10-02Z† 418-871-1958; TSAS 122.9 10-03Z† Mon-Fri, 1000-0230Z† Sat-Sun 418-877-6708, 888-592-3835; Services Aériens du Québec ctc dispatch 129.625 prior to arr and dep 20 min PPR; Air Liaison/Skyjet 129.17 11-15Z† 2030-2300Z† Mon-Fri 418-872-0999; AFS Exécutif 123.525 10-02Z† 418-877-4419; Les Ailes Québécoises Inc. 129.85; Lux FBO 122.825 10-03Z† 418-649-8999
 MIL CON	Avjet Distributions Inc. 418-871-1958
RWY DATA	Rwy 06(061°)/24(241°) 9000x150 ASPH Rwy 24 up 0.3% Rwy 11(114°)/29(294°) 5700x150 ASPH
 RWY CERT	Rwy 06 RVR 1200(1/4sm)/Rwy 24 RVR 1200(1/4sm) AGN V Rwy 11/29 AGN IIIB
 TWY CERT	Twy A AGN IV Twy C AGN IIIB
 APRON	Apron I: Btwn stand 33-37 rstd to taxiing acft with wingspan less than 118'. Apron II and III rstd to taxiing acft with wingspan less than 118'. Acft with wingspan 118' or greater must be towed. No parking on apron III. Parking proh without perms 418-640-0707.
 RCR	Opr 13-21Z† Mon-Fri May 1-Oct 31, H24 Nov 1-Apr 30. CRFI, PCN
LIGHTING	06-AN(TE HI) P3, 24-AN(TE HI) P3, 11-AO(TE ME) P2 offset 12° to the S, 29-AO(TE ME) P2
COMM	(bil)
 RCO	Québec rdo 123.275 (FISE) 126.7 (bcst)
 ATIS	(English) 134.6; (French) 128.3
 GND	Québec 121.9 250.0
 TWR	Québec 118.65 236.6 (E) (emerg only 418-871-7691)
 TML	Québec 124.0 VFR 127.85 IFR 322.8
 PAL	Montréal Ctr 135.025 270.9
NAV	
 DME	YQO 113.2 Ch 79 N46 47 49 W71 23 34 (312°)
 ILS	IQB 109.5 (Rwy 06) RVR
PRO	Certain acft code AGN IIIB, AGN IV and higher, are not auth to perform 180° turns on any rwy without perms 418-640-0707. Trng flts dep to CYA616T, as per VTPC: Dep Rwy 24 and 29: Cross Lac St-Augustin at 2000 ASL & maintain 2000 ASL until ST-GILLES. Dep Rwy 06 and 11: Proceed to PONT DE QUEBEC BRIDGE, maintain 2000 ASL until ST-GILLES.

QUÉBEC / JEAN LESAGE INTL QC (Cont'd)

CYQB

PRO (Cont'd)

Arr: Ctc tml leaving CYA616T & continue SAINT LAMBERT to PONT DE QUEBEC BRIDGE as per VTPC, maintain 2500 ASL.

Pilots should refer to Canadian Airport Charts (CAC) to obtain details on established hot spots, prior to operating on maneuvering areas. CAC are available for free on the NAV CANADA website.

Paragliding: Paragliding activities in the region of Mont-Ste-Anne refer to QUÉBEC VTPC - GLIDER OPERATIONS.

Circuits: Rgt hand circuit Rwy 24 (CAR 602.96).

REDUCED VISIBILITY PROCEDURES (RVR less than 2600 to 1200 ft)

Reduced Visibility operations - 24 hours

Reduced Visibility Operations on Rwy 06-24: these are operations when reported visibility is less than RVR 2600 feet or ½ statute mile and greater than or equal to RVR 1200 feet or ¼ statute mile, per advisory circular CI 302-001.

Low visibility operations (LVOP) (below RVR 1200') are not permitted.

DEPARTURES & ARRIVALS

"Follow-me" car

A Follow-me car will be available at all times, under any circumstances, upon a pilot's request. This service is available for one aircraft at a time based on first come, first served principles; some exceptions may apply.

During RVOP conditions, run-ups and towing will not be authorized on the maneuvering areas. Furthermore, vehicle access to the maneuver area during reduced visibility operations is restricted to essential operational functions only.

Operation Terms

20 minutes prior to a flight's departure or arrival, the pilot shall contact Nav Canada's ground controller to request a "Follow-me" car escort for taxiing on the manoeuvring area.

The pilot shall provide the following information:

- Exact position on the airfield (gate or FBO);
- Type of aircraft and airline;
- Flight departure time (if available);
- Runway used for take-off;

The "Follow-me" car will position itself 30m in front of the aircraft. Hazard lights will be activated when ready for taxiing and for the duration of the escort procedure.

Upon receiving authorization to proceed, the "Follow-me" car will follow the guide lines at no more than 30kph (16 knots) up to the desired destination.

Night Only: When reported visibility is less than RVR 1800 or 3/8 SM, a "Follow-me" car is mandatory per advisory circular AC 302-004.

DEPARTURE: Dep within CZ outside of QUÉBEC / JEAN LESAGE INTL aprt bdry, ctc Québec gnd prior tkof. If unable, call Québec twr at 418-871-7814.

RUNWAY LEVEL OF SERVICE

Rwy 06 RVR 1200

Rwy 24 (1/4 sm)

Preferential rwy: Anticipate Rwy 06/24 in crosswinds up to 25 kt at 090° instead of Rwy 11.

NOISE: Unless otherwise instructed by ATC, all helicopters climbing over populated areas to have best rate of climb and avoid low flying over populated areas.

ATC:

IFR ClnC Acknowledgement:

IFR clnC read back with Québec Twr gnd shall include acft call sign, assigned SID name and transponder code.

QUEBEC

AERODROME / FACILITY DIRECTORY

QUÉBEC / JEAN LESAGE INTL QC (Cont'd)

CYQB

PRO (Cont'd)	MULTILATERATION: Pilots must keep their transponder on at all times when maneuvering on the aprt (turned on prior to brake release and on arrival, on until final engine shutdown).
HELI	<p>All heli must ctc Ground Ctl. Avoid overflying north shore of Lac St-Augustin.</p> <p>ROUTES: (See Québec Heli VTPC)</p> <p>-Église: For arr & dep via Église, proceed to a point 1.5NM E, heading 264°/084°.</p> <p>-Montagne: For arr & dep via Montagne, proceed to a point 1NM NW, heading 150°/330° not above 750 ASL.</p> <p>-Chemin de fer: For dep via Chemin de fer, fly heading 104° to a point 1.7NM SE, then follow the railway to Robert-Bourassa highway.</p> <p>For arr via Chemin de fer, follow the railway from Robert-Bourassa highway to a point 1.7NM SE and then fly heading 284°.</p> <p>-Ste-Foy: Starting at highway Henry IV, follow highway Charest heading west until the intercepting Rwy 29 final at 1000 ft ASL or higher. Then proceed to the airport following the Rwy 29 final approach. Avoid flying over Rwy 29.</p> <p>Capitale Hélicoptère arr/dep proc: refer to QUÉBEC / CAPITALE HÉLICOPTÈRE QC (Heli) PRO.</p> <p>Release and banner towing prohibited PPR Opr 418-640-0707</p> <p>Heli tng area avbl 3hr PPR 418-640-2700 ext 3333</p>
CAUTION	Twin antennas aprx 2035' N of thld of Rwy 24, 140 AGL, 336 ASL, only one antenna painted & lighted.