
FLIGHT PLAN & SITE SURVEY

D 486-5723 PORTAGE PLANES RADIO CONTROL CLUB- Off
The Top Meeting Site

May 22, 2026



IMPORTANT NOTICE

Please ensure you have received all required authorizations prior to flight. This Site Survey was created using RPAS Wilco. The user accepts all responsibility for the accuracy of the information.

Terms & Conditions: rpswilco.com/#tnc

Mission Information

D 486-5723 PORTAGE PLANES RADIO CONTROL CLUB- OFF THE TOP MEETING SITE

FLIGHT DETAILS

| | |
|--------------------|--|
| Reference No: | MAAC-486-5723 |
| Project Name: | PORTAGE PLANES RADIO CONTROL CLUB |
| Pilot Name: | MAAC |
| Pilot Certificate: | |
| Mission Type: | VLOS |
| Flight Start: | May 22, 2026 09:45 PM |
| Flight End: | May 22, 2026 10:45 PM |

LOCATION DETAILS

| | |
|--------------------|-------------------------------------|
| Flight Address: | Off The Top Meeting Site |
| Latitude: | 49° 58' 23.27" N (49.973) |
| Longitude: | 98° 17' 11.98" W (-98.287) |
| Field Elevation: | 863 ft MSL |
| Altitude / Radius: | 400 ft / 926 m (0.5 nm) |
| Classification: | UNCONTROLLED |
| FIR / Contact: | CZWG / 204-983-8338 |

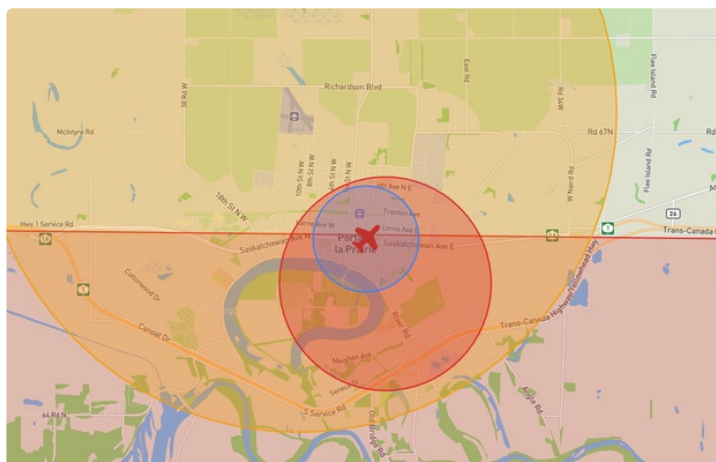
REPORT CONTENTS

Site Survey • Obstacles (if available) • Nearby Aerodromes • Canadian Aviation Regulations • GFA • Aerodrome Supplements • METAR & TAF • NOTAMs • CFS





Flight Map & MODEL Details

MISSION LOCATION SURVEY

FLIGHT AREA MAP



MISSION LOCATION DETAILS

| ROLE | LATITUDE | LONGITUDE |
|---|----------------------------|-----------------------------|
|  MODEL | 49° 58' 23.27" N 49.973 | 98° 17' 11.98" W -98.287 |
|  Pilot | | |
|  Payload Op. | | |
|  Observer | | |

Airspace Classification

MISSION LOCATION SURVEY

AIRSPACE MAP



OVERLYING AIRSPACES

| Class | Name | Floor | Ceiling |
|-------|-----------------------|----------|----------|
| D | Southport, MB [CZ] | SFC | 4000MSL |
| E | Southport, MB [TA] | 700AGL | 18000MSL |
| B | Winnipeg, MB a) [TCA] | 12500MSL | 18000MSL |
| C | Winnipeg, MB c) [TCA] | 3000AGL | 18000MSL |
| C | Winnipeg, MB d) [TCA] | 4000MSL | 12500MSL |
| B | Brandon, MB b) [CAE] | 12500MSL | 18000MSL |
| E | T706 Fixed RNAV Route | 2200AGL | 18000MSL |
| E | Winnipeg, MB a) [CAE] | 6500AGL | 18000MSL |

NEAREST AERODROMES & DISTANCE FROM OPERATION

| | | | | | |
|--|-------------|---------------|---------|---------|----|
| PORTAGE LA PRAIRIE (NORTH) (CJ22 - AERODROME - Reg) | Lat: 49.993 | Long: -98.303 | 2.507KM | 1.354NM | NW |
| PORTAGE (DISTRICT GENERAL HOSP) (CPO2 - HELIPORT - Cert) | Lat: 49.966 | Long: -98.282 | 0.85KM | 0.459NM | SE |
| SOUTHPORT (CYPG - AERODROME/HELIPORT - Cert) | Lat: 49.903 | Long: -98.274 | 7.845KM | 4.236NM | S |

MANITOBA

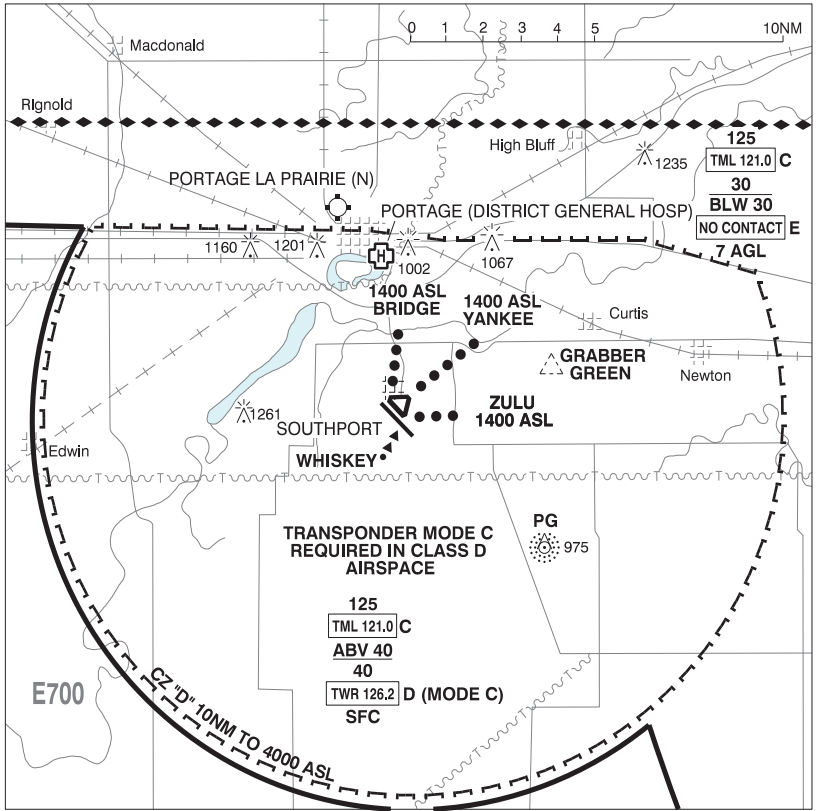
AERODROME / FACILITY DIRECTORY

PORTAGE LA PRAIRIE (NORTH) MB

CJ22

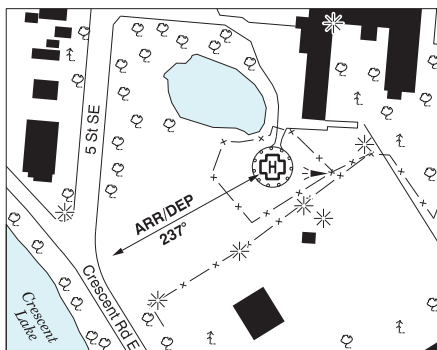
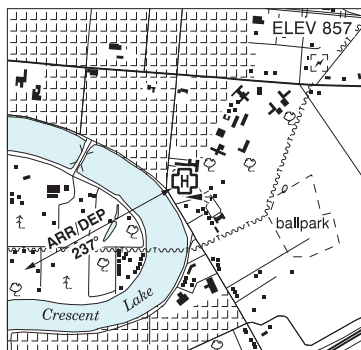
| | | |
|-----------------|---|--|
| REF | N49 59 36 W98 18 12 Adj NW 4°E (2017) UTC-6(5) Elev 860' VTA A5007 | |
| OPR | Portage Flying Club Rick Yaskiw 204-857-4212 Reg | |
| PF | C-1,2,3,4,5,6 A/D clsd in win | |
| FLT PLN | Pilots to open/close VFR flt plan with Edmonton rdo, FISE or by phone. | |
| FIC | Edmonton 866-WXBRIEF (Toll free within Canada) or 866-541-4102 (Toll free within Canada & USA) | |
| SERVICES | | |
| FUEL | 100LL PN | |
| S | 4,5,6 | |
| RWY DATA | Rwy 18(182°)/36(002°) 2048x75 GRASS Rwy 14(144°)/32(324°) 2971x90 GRASS Rwy 09(093°)/27(273°) 1952x75 GRASS | |
| RCR | Opr ltd win maint | |
| COMM | | |
| ATF | tfc 122.8 5NM 3000 ASL excluding the YPG Class "D" CZ. | |
| PRO | Rgt hand circuits Rwy 18, 27 & 32 (CAR 602.96), circuit hgt 1600 ASL. Aprt in close proximity to Southport class "D" CZ, for flt info ctc Southport TWR. | |
| CAUTION | Bldgs and P-lines 1000' N thld Rwy 14 and parallel to E side Rwy 14. | |

PORTAGE VFR TERMINAL PROCEDURES CHART



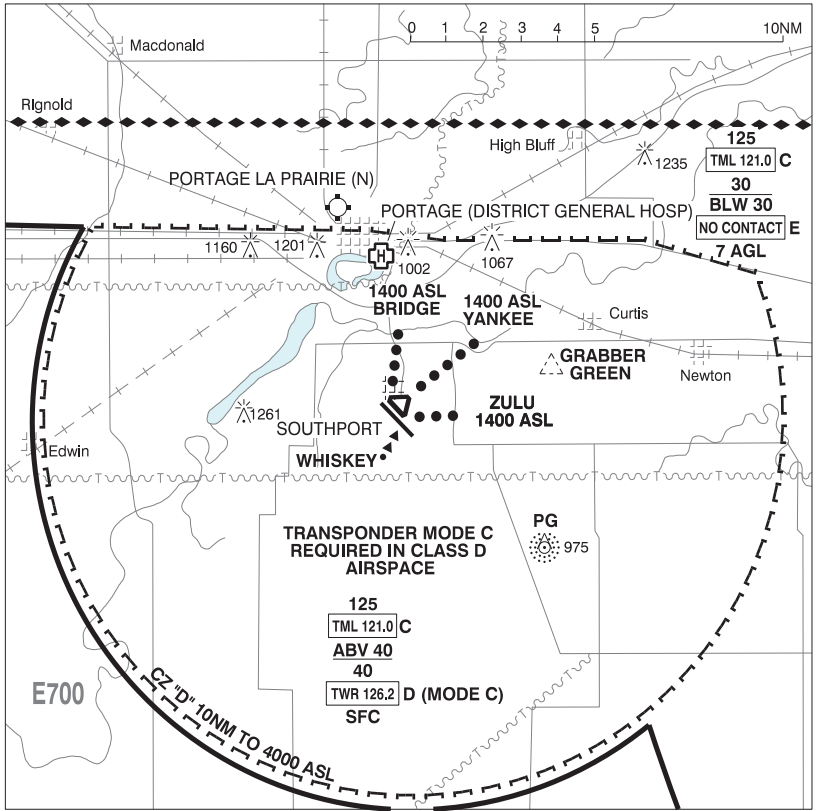
PORTAGE (DISTRICT GENERAL HOSP) MB (HELI)

CPO2



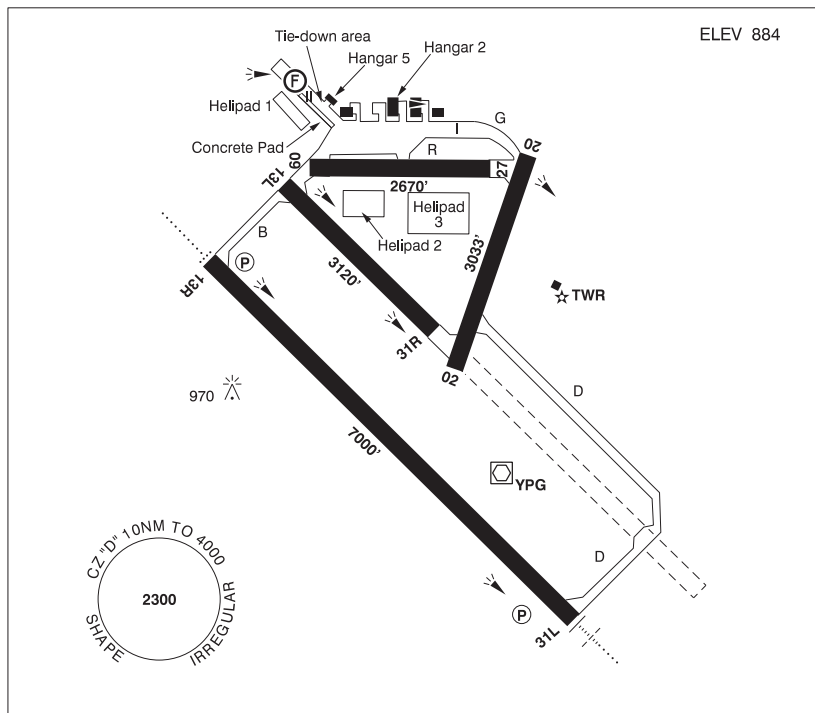
| | |
|------------------|---|
| REF | N49 57 59 W98 16 56 Adj 4°E (2024) UTC-6(5) Elev 857' A1902 A5007 |
| OPR | Southern Health Portage District General Hosp 204-239-2245 Cert NVIS OPS AUTH PPR |
| FLT PLN | |
| FIG | Edmonton 866-WXBRIEF (Toll free within Canada) or 866-541-4102 (Toll free within Canada & USA) |
| HELI DATA | FATO 82' dia CONC/ASPH TLOF 33' dia CONC Safety Area 110 dia' Max heli overall length 54.7' (CAR 602.96) |
| RCR | Opr |
| LIGHTING | RF(FL) |
| COMM | |
| TWR | Southport twr 126.2 (V) 14-24Z† Mon-Fri exc hols |
| ATF | tfc 126.2 00-14Z† Mon-Fri, H24 Sat, Sun and hols 10NM irregular shape centred on Southport A/D 3.8NM S 4000 ASL see PORTAGE VTPC. |
| PRO | Arr/dep 237° fr heli (H1), NVIS reqrd for ngt use (CAR 602.96). |
| CAUTION | P-lines E of heli. 4' fence parallel to flt path. |

PORTAGE VFR TERMINAL PROCEDURES CHART



PORTAGE LA PRAIRIE / SOUTHPORT MB

CYPC



| | |
|-----------------|--|
| REF | N49 54 11 W98 16 26 4S 4°E (2016) UTC-6(5) Elev 884' VTA A5007 LO4 HI4 CAP |
| OPR | Southport Aerospace Centre Inc 204-428-6030 14-24Z‡ exc hols, O/T by NOTAM. Mil fit ops 866-315-2069 Cert |
| PF | B-1,2 (ltd hrs), 5,7 C-2,3,4,6 |
| FLT PLN | Pilots to open/close VFR fit plan with Edmonton rdo, FISE or by phone. |
| FIC | Edmonton 866-WXBRIEF (Toll free within Canada) or 866-541-4102 (Toll free within Canada & USA) |
| WX | 204-428-2444 ltd hrs (see opr). O/T for mil only JMC 1-800-WXMETEO (996-3836). METAR dur fit ops. TAF dur fit ops, issue times depending on mil requirements. AUTO (see COMM). |
| SERVICES | Call out chg may be levied for one or more svcs |
| FUEL | 100LL, JA-1 (FSII avbl), SP 14-04Z‡ Mon-Fri exc hols. Ctc Tran Svcs 204-428-2435 O/T PN 204-872-0570 |
| OIL | 80, 100, Turbo Oil 2380 |
| ARFF | PARTICIPATING CAT 2 14-24Z‡ Mon-Fri exc hols |
| S | 1,4,5,6 |
| PVT ADV | Tran Svcs 123.0 |

MANITOBA

AERODROME / FACILITY DIRECTORY

PORTAGE LA PRAIRIE / SOUTHPORT MB (Cont'd)

CYPG

| | |
|------------------|--|
| RWY DATA | Rwy 13R(130°)/31L(310°) 7000x148 ASPH Rwy 13L(130°)/31R(310°) 3120x98 ASPH Rwy 09(085°)/27(265°) 2670x98 ASPH Rwy 02(015°)/20(195°) 3033x150 ASPH Rwy 20 up 0.3% RESA: 13R/31L 984' |
| RWY CERT | Rwy 13R/31L AGN IIIA Rwy 13L/31R AGN II Rwy 09/27 AGN II Rwy 02/20 AGN IIIA |
| TWY CERT | Twy R AGN II |
| HELI DATA | FATO 87' x 87' CONC Helipad 1: 607' x 148' GRASS/SNOW Helipad 2: 492' x 197' GRASS/SNOW Helipad 3: 656' x 328' GRASS/SNOW |
| APRON | No itinerant acft on Apron I. Itinerant acft prkg S of hg 5 on Apron II. Jet and large acft prkg on concrete pad on S side of Apron II. Heli FATO on S side of Apron II. Light acft use tie-downs on N side of Apron II. Parking Fees. |
| RCR | Opr CRFI, Mil Flt Ops 204-428-2444, 14-24Z† exc hols O/T by NOTAM. PCN ctc Opr. Rwy 09/27 wt rstd to 15,500 lbs. Call out chgs. |
| LIGHTING | 02-(TE ME), 20-(TE ME), 13R-AO(TE HI) P2, 31L-AN(TE HI) P2 ARCAL-126.2 type K |
| COMM | |
| ATIS | 120.85 14-24Z† Mon-Fri exc hols |
| GND | 121.7 14-24Z† Mon-Fri exc hols |
| TWR | 126.2 (V) 14-24Z† Mon-Fri exc hols |
| ATF | tfc 126.2 00-14Z† Mon-Fri, H24 Sat, Sun & hols 10NM 4000 ASL |
| ARR | Winnipeg Tml 121.0 |
| DEP | Winnipeg Tml 121.0 |
| VFR ADV | Winnipeg Tml 121.0 |
| MIL | 3 CFFTS Ops 204-428-4139 |
| AUTO | 123.175 |
| NAV | All Nav aids Unmonitored when Twr clsd. |
| NDB | PORTAGE PG 353 (L) N49 50 30 W98 10 47 Pvt |
| VOR/DME | PORTAGE YPG 114.6 Ch 93 N49 53 59 W98 16 02 (902') Pvt |
| ILS | IPG 109.7 (Rwy 31L) Pvt |
| PRO | Rgt hand circuits Rws 13R, 20, 27 & 31R (CAR 602.96). Circuit alt 02/20, 09/27 & 13L/31R 1900 ASL, 13R/31L 2500 ASL. Arr ctc twr 126.2 prior to "D" CZ. VFR circuits & multiple IFR apch for tng by itinerant acft may be rstd due lcl tfc. Extv heli tng NE quad CZ within 5NM. Avoid satellite fld (Grabber Green) N49 54 52 W98 09 38, 4NM NE (see VTPC) or cross at 2500 ASL or above. |
| HELI | Dep & arr FATO 1 on Apron II as directed by twr depicted rtes (see VTPC). Not above 1400 ASL til clear of circuits. |
| CAUTION | Extv flt tng in the lcl area. Hrs of ops may be extended by NOTAM. Ocsl extv ngt flt tng activity. Attempt ctc with Southport twr 126.2 prior to entering CZ. Lgtd twr 1010 ASL (150 AGL) aprx 0.9NM N of A/D. |