
FLIGHT PLAN & SITE SURVEY

D 9004-5763 Zone D Manitoba - Northwestern Ontario- PFS -
John Noon

May 22, 2026



IMPORTANT NOTICE

Please ensure you have received all required authorizations prior to flight. This Site Survey was created using RPAS Wilco. The user accepts all responsibility for the accuracy of the information.

Terms & Conditions: rpaswilco.com/#tnc

Mission Information

D 9004-5763 ZONE D MANITOBA - NORTHWESTERN ONTARIO- PFS - JOHN NOON

FLIGHT DETAILS

Reference No:	MAAC-9004-5763
Project Name:	Zone D Manitoba - Northwestern Ontario
Pilot Name:	MAAC
Pilot Certificate:	
Mission Type:	VLOS
Flight Start:	May 22, 2026 09:46 PM
Flight End:	May 22, 2026 10:46 PM

LOCATION DETAILS

Flight Address:	PFS - John Noon
Latitude:	50° 0' 0.00" N (50.0)
Longitude:	100° 7' 4.80" W (-100.118)
Field Elevation:	1539 ft MSL
Altitude / Radius:	400 ft / 926 m (0.5 nm)
Classification:	UNCONTROLLED
FIR / Contact:	CZWG / 204-983-8338

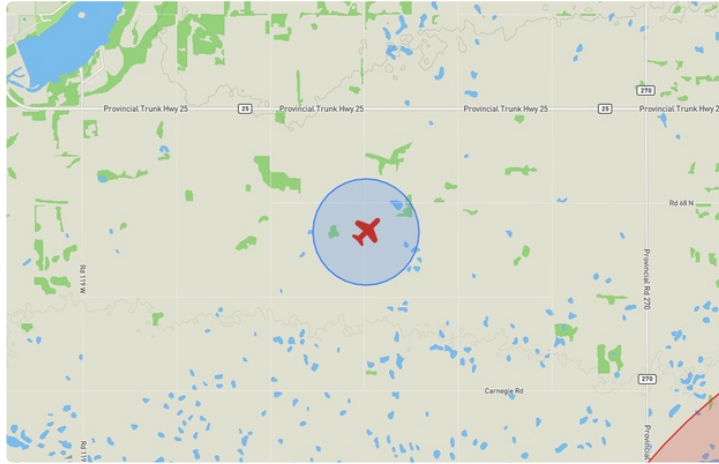
REPORT CONTENTS

Site Survey • Obstacles (if available) • Nearby Aerodromes • Canadian Aviation Regulations • GFA • Aerodrome Supplements • METAR & TAF • NOTAMs • CFS





Flight Map & MODEL Details

MISSION LOCATION SURVEY

FLIGHT AREA MAP



MISSION LOCATION DETAILS

ROLE	LATITUDE	LONGITUDE
 MODEL	50° 0' 0.00" N 50.0	100° 7' 4.80" W -100.118
 Pilot		
 Payload Op.		
 Observer		

Airspace Classification

MISSION LOCATION SURVEY

AIRSPACE MAP



OVERLYING AIRSPACES

Class	Name	Floor	Ceiling
B	Brandon, MB b) [CAE]	12500MSL	18000MSL
E	Brandon Muni, MB [TA]	700AGL	18000MSL
E	Brandon, MB a) [CAE]	2200AGL	18000MSL
B	Dauphin, MB b) [CAE]	12500MSL	18000MSL
E	T691 Fixed RNAV Route	2200AGL	18000MSL
E	T706 Fixed RNAV Route	2200AGL	18000MSL
E	Brandon Muni, MB [CZ]	SFC	4000MSL
E	T728 Fixed RNAV Route	2200AGL	18000MSL

NEAREST AERODROMES & DISTANCE FROM OPERATION

SPUD PLAINS (CRS5 - AERODROME - Reg)	Lat: 49.991	Long: -100.313	14.002KM	7.56NM	W
BRANDON MUNI (CYBR - AERODROME - Cert)	Lat: 49.91	Long: -99.952	15.518KM	8.379NM	SE
MINNEDOSA (CJU5 - AERODROME - Reg)	Lat: 50.272	Long: -99.763	39.425KM	21.288NM	NE

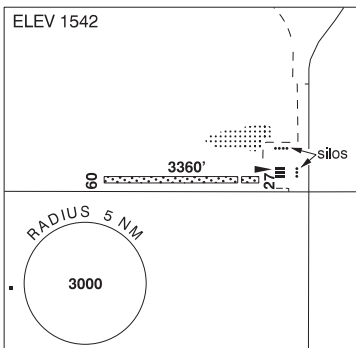
MANITOBA

AERODROME / FACILITY DIRECTORY

WHEATLAND / SPUD PLAINS MB

CRS5

REF	N49 59 26 W100 18 48 1.7SSW 5°E (2021) UTC-6(5) Elev 1542' A5007
OPR	Paul Adriaansen 204-834-3866 Reg PPR
FLT PLN	
FIC	Edmonton 866-WXBRIEF (Toll free within Canada) or 866-541-4102 (Toll free within Canada & USA)
RWY DATA	Rwy 09/27 3360x75 GRASS/CONC Thld 27 displ 374'
RCR	Opr 204-729-7241 No win maint
COMM	
ATF	tfc 123.2 5NM 4600 ASL
CAUTION	Grain leg 85' AGL E of rwy.

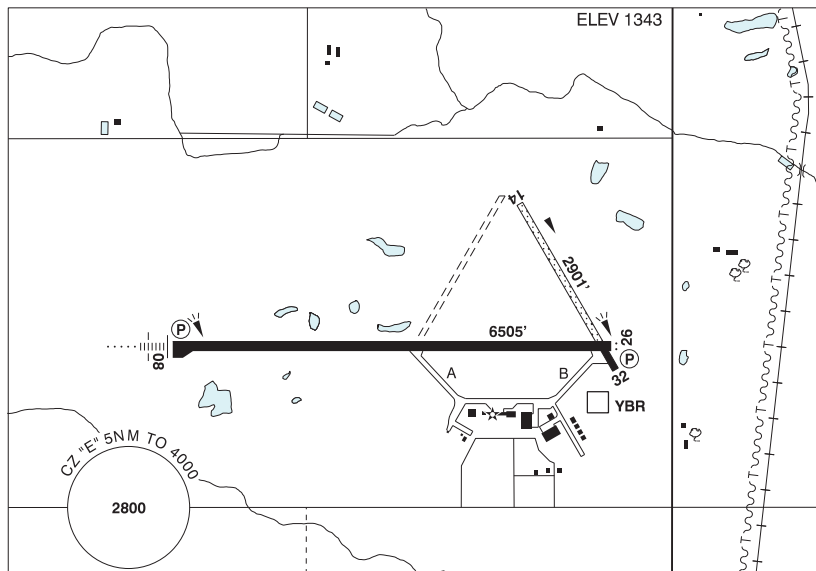


MANITOBA

AERODROME / FACILITY DIRECTORY

BRANDON MUNI MB

CYBR



REF	N49 54 36 W99 57 08 4N 6°E (2013) UTC-6(5) Elev 1343' A5007 LO4 HI4 CAP
OPR	Muni 204-729-2166 12-02Z‡ Mon-Fri, 14-24Z‡ Sat-Sun Cert Ldg fees
PF	A-1 C-2,3,4,5,6
CUST	AOE/15 888-226-7277 15-23Z‡
FLT PLN	Pilots to open/close VFR fit plan with Edmonton rdo, FISE or by phone.
FIC	Edmonton 866-WXBRIEF (Toll free within Canada) or 866-541-4102 (Toll free within Canada & USA)
WX	METAR 13-04Z‡ O/T METAR AUTO (see COMM). TAF H24, issue times: 00, 06, 12, 18Z. WxCam
SERVICES	Call out chg may be levied for one or more svc
FUEL	100LL, JA-1 (FSII avbl), SP, HPR 14-23Z‡ O/T call out chg
OIL	All
S	1,2,3,4 (ltd),5,6
SUP FL	D-ice (avbl by truck)
JASU	CE16
PVT ADV	Brandon Flight Centre 122.95 204-728-7691
RWY DATA	Rwy 08(085°)/26(265°) 6505x150 asphalt Rwy 14(145°)/32(325°) 2901x60 treated gravel/asphalt First 438' Rwy 32 asphalt
RWY CERT	Rwy 08/26 AGN IIIB Rwy 14/32 AGN II
APRON	No power turns permitted on tml apron.
RCR	Opr Ltd win maint Rwy 14/32. Rwy 14/32 rstd to acft under 12,000 lbs. A/D maint 12-02Z‡ Mon-Fri, 14-24Z‡ Sat-Sun O/T 1 hr PN for AMSCR and CRFI. Call out charge may be levied. 204-729-7026.
LIGHTING	08-AN(TE HI) P2, 26-AS(TE HI) P2 ARCAL-122.1 type K avbl when FSS clsd

MANITOBA

AERODROME / FACILITY DIRECTORY

BRANDON MUNI MB (Cont'd)

CYBR

COMM	
RADIO	122.1 (E) 13-04Z† (emerg only 204-728-7169)
RCO	Edmonton 123.275 (FISE) 126.7 (bcst)
MF	rdo 13-04Z† O/T tfc 122.1 5NM 4000 ASL (CAR 602.98)
ARR	Winnipeg Ctr 132.25
DEP	Winnipeg Ctr 132.25
PAL	Winnipeg Ctr 132.25
AWOS	128.175 04-13Z†
NAV	
DME	YBR 113.8 Ch 85 N49 54 18 W99 56 22 (1378')
DME	IBR 110.1 Ch 38 N49 54 31 W99 57 43 Pvt
ILS	IBR 110.1 (Rwy 08) Pvt
PRO	<p>Rgt hand circuits Rwy 26 (CAR 602.96). Periodic extv glider ops to 4000 MSL. Gliders & tow acft opr fr infield S of Rwy 08/26. Glider & tow acft circuits S of Rwy 08/26. Rgt hand circuits Rwy 32 (CAR 602.96). Gliders & tow acft opr fr infield W of Rwy 14/32. Glider & tow acft circuits W of Rwy 14/32. Acft inbd fr the S may be requested to rpt crossing the Trans Canada Hwy.</p> <p>ATS PPR REQUIREMENTS: Ctc Winnipeg ACC 204-984-5979 for IFR tng and photo survey within Brandon Class E Airspace 12,500' and below.</p>
CAUTION	Hydro P-lines 154 AGL unlgtd 9000' E of Thld 26. Ocsl parajump activity within 1.5NM of A/D to 14,000 ASL. Hi ints lgt oprg dusk to dawn fr hotel roof at N49 49 56 W99 57 40 (4.7NM S A/D). Beams projecting upward. Hi ints lgt may create temporary effects to vision.

MANITOBA

AERODROME / FACILITY DIRECTORY

MINNEDOSA MB

CJU5

REF	N50 16 19 W99 45 47 3NE 5°E (2024) UTC-6(5) Elev 1840' aprx A5007
OPR	K. Kane 204-867-4112 Reg PPR
PF	B-1 C-2,3,4,5
FLT PLN	Pilots to open/close VFR fit plan with Edmonton rdo, FISE or by phone. FIC Edmonton 866-WXBRIEF (Toll free within Canada) or 866-541-4102 (Toll free within Canada & USA)
SERVICES	S 5,6
RWY DATA	Rwy 10/28 2750x75 GRASS/SNOW
RCR	Opr Ltd win maint
COMM	ATF tfc 123.2 5NM 4800 ASL

