
FLIGHT PLAN & SITE SURVEY

E 9005-5782 Zone E Middle Ontario- Canadian Warplane
Heritage Museum AZM Meeting

May 22, 2026



IMPORTANT NOTICE

Please ensure you have received all required authorizations prior to flight. This Site Survey was created using RPAS Wilco. The user accepts all responsibility for the accuracy of the information.

Terms & Conditions: rpaswilco.com/#tnc

Mission Information

E 9005-5782 ZONE E MIDDLE ONTARIO- CANADIAN WARPLANE HERITAGE MUSEUM AZM MEETING

FLIGHT DETAILS

Reference No:	MAAC-9005-5782
Project Name:	Zone E Middle Ontario
Pilot Name:	MAAC
Pilot Certificate:	
Mission Type:	VLOS
Flight Start:	May 22, 2026 10:46 PM
Flight End:	May 22, 2026 11:46 PM

LOCATION DETAILS

Flight Address:	Canadian Warplane Heritage Museum AZM Meeting
Latitude:	43° 9' 36.00" N (43.16)
Longitude:	79° 55' 30.00" W (-79.925)
Field Elevation:	787 ft MSL
Altitude / Radius:	400 ft / 926 m (0.5 nm)
Classification:	UNCONTROLLED
FIR / Contact:	CZYZ / 905-676-4509

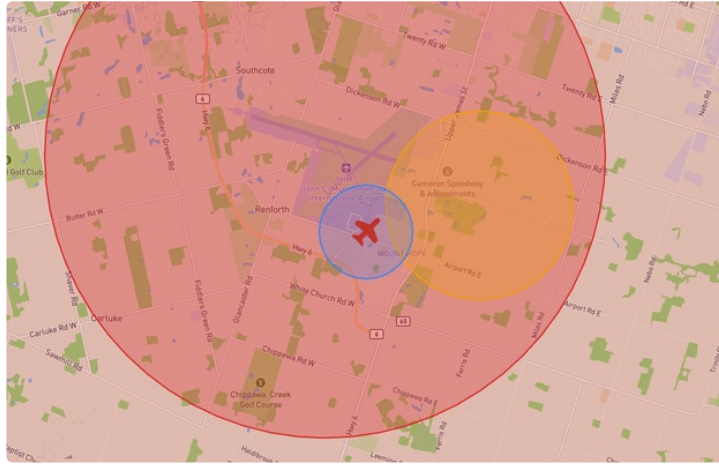
REPORT CONTENTS

Site Survey • Obstacles (if available) • Nearby Aerodromes • Canadian Aviation Regulations • GFA • Aerodrome Supplements • METAR & TAF • NOTAMs • CFS





Flight Map & MODEL Details

MISSION LOCATION SURVEY

FLIGHT AREA MAP



MISSION LOCATION DETAILS

ROLE	LATITUDE	LONGITUDE
 MODEL	43° 9' 36.00" N 43.16	79° 55' 30.00" W -79.925
 Pilot		
 Payload Op.		
 Observer		

Airspace Classification

MISSION LOCATION SURVEY

AIRSPACE MAP



OVERLYING AIRSPACES

Class	Name	Floor	Ceiling
E	Southern Ontario Low Level Control Area c) [CAE]	6500MSL	18000MSL
E	Toronto, ON [TSP]	6500MSL	12500MSL
E	T608 Fixed RNAV Route	2200AGL	18000MSL
E	T781 Fixed RNAV Route	2200AGL	18000MSL
E	3.4.1-43 [TA]	700AGL	18000MSL
D	Hamilton, ON [CZ]	SFC	4500MSL
C	Toronto, ON d) [TCA]	3500MSL	4500MSL
C	Toronto, ON e) [TCA]	4500MSL	12500MSL

NEAREST AERODROMES & DISTANCE FROM OPERATION

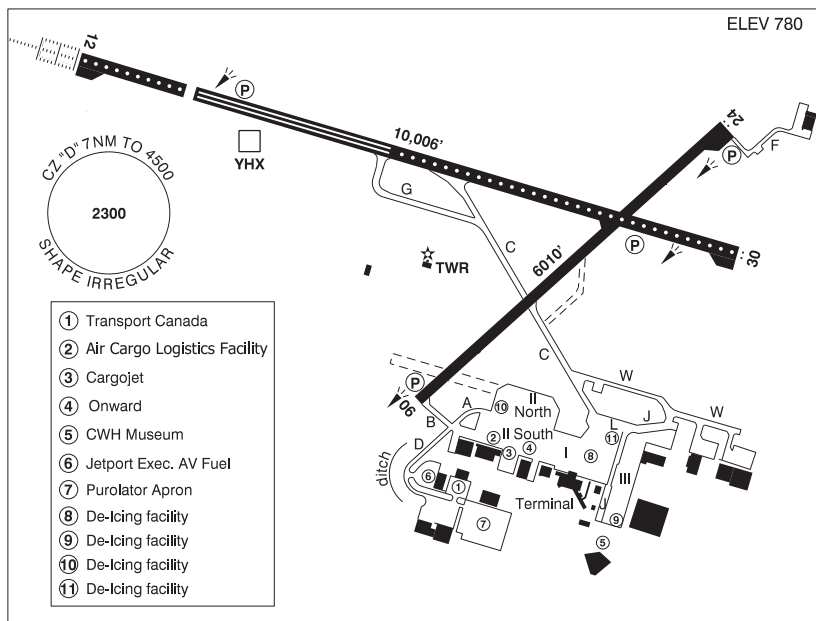
HAMILTON (CYHM - AERODROME - Cert)	Lat: 43.174	Long: -79.935	1.717KM	0.927NM	NW
MOUNT HOPE (WILLOW VALLEY) (CMH8 - HELIPORT - Reg)	Lat: 43.165	Long: -79.897	2.313KM	1.249NM	E
GRAND RIVER EXECUTIVE AIRPORT (CPP6 - AERODROME - Reg)	Lat: 43.038	Long: -79.852	14.839KM	8.012NM	SE

ONTARIO

AERODROME / FACILITY DIRECTORY

HAMILTON ON

CYHM



REF	N43 10 25 W79 56 06 6SW 10°W UTC-5(4) Elev 780' VTA A5000 LO6 HI5 CAP OC
OPR	Aprt Ops Ctr 905-679-4908 / Tradeport Intl Corp 905-679-1999 H24 Cert Ldg fees
PF	A-1,2,3,6,7 C-4,5
CUST	AOE/220 (400 with staged off-loading) 888-226-7277 12-04Z‡ May 1-Oct 31; H24 Nov 1-Apr 30 svc chg PN
FLT PLN	
 FIG	London 866-WXBRIEF (Toll free within Canada) or 866-541-4104 (Toll free within Canada & USA)
 WX	METAR H24. TAF H24, issue times: 00, 06, 12, 18Z.
SERVICES	
 FUEL	JA-1 (FSII avbl)
 OIL	All
 S	1,2,3,4
 ARFF	DESIGNATED CAT 7 for sked pax flt (CAT 5 non-sked). CAT 7 for non-sked 30 min PN ctc 905-679-4908. PPR for acct 20 seats and abv, exc for diversions or as an altn.
 SUP FL	A-ice, D-ice, HPOX
 JASU	CE13, CE15, CA1
 PVT ADV	Cargojet 131.575 905-679-3558; Onward Avn 130.5 905-679-4127; Hamilton Jetport 122.35 905-679-2400; Executive Aviation 289-440-1579
 MIL CON	Onward Aviation 905-679-4127

ONTARIO

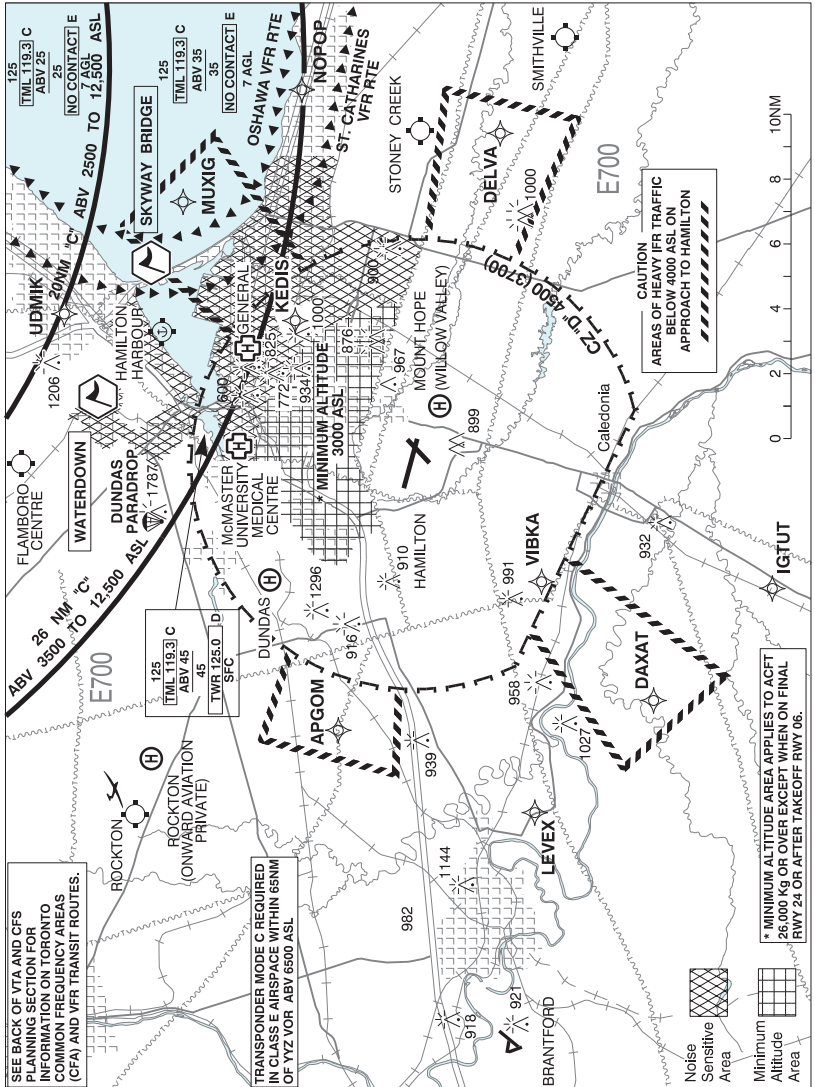
AERODROME / FACILITY DIRECTORY

HAMILTON ON (Cont'd)

CYHM

RWY DATA	Rwy 06(059°)/24(239°) 6010x150 ASPH Rwy 12(117°)/30(297°) 10,006x197 ASPH Thld 12 displ 1608' RESA: 12/30 492'
RWY CERT	Rwy 06/24 AGN IV Rwy 12 RVR 600/Rwy 30 RVR 1200(1/4sm) AGN V
TWY CERT	Twy: D, W AGN IV Twy: F AGN IIIB Twy J: AGN IV & AGN IIIB fr Twy L to Twy W
TWY	Twy: D, J, L, W uncontrolled. Twy C: Right turn fm Rwy 06 to Twy C and left turn fm Twy C to Rwy 24 rstd to acft with wingspans of 52.1m/171' or less. Left turn fm Rwy 30 to Twy C and right turn fm Twy C to Rwy 12 requires a discretionary oversteer for acft with wingspans of 52.1m/171ft or greater. Twy F: Rstd to acft with wingspans of 35.9m/118' or less. Twy J: Btwn Twy L and Twy W rstd to acft with wingspans of 35.9m/118ft or less.
APRON	Aprons I, II & III rstd to power-in/pushback for fixed wing acft only unless otherwise auth by opr. Aprons I, II & III uncontrolled. Taxiing aircraft to remain on taxilane centre lines. Apron II North: Taxiing aircraft to remain on taxilane centre lines. Aircraft shall not taxi between the ATB, Onward or the ACLF and pushed back aircraft.
RCR	Aprt Ops Ctr CRFI/RSC avbl H24 Nov 15 - Apr 15. PCN
LIGHTING	06(TE ME) P2, 24-AS(TE ME) P2, 12-AL(TE HI CL TDZL) P2, 30-AS(TE HI CL) P3
COMM	
ATIS	128.1
GND	121.6
TWR	125.0 (E) (emerg only 905-679-3220)
ARR	Toronto Tml 119.7
DEP	Toronto Tml 119.7
PAL	Toronto Ctr 119.7
NAV	
DME	YHX 113.35 Ch 80(Y) N43 10 38 W79 56 39 (797')
ILS	IAB 110.9 (Rwy 12) RVR
LOC	IER 110.9 (Rwy 30)
PRO	IFR tng flts are to ctc National Traffic Management Unit (FLOW CTL) 800-268-4831 2 hrs prior to ETD for possible delays. VFR tfc outside CZ watch for IFR practice apch acft oprg in vic of all extended rwy ctr lines.
NOISE ABATEMENT	RESTRICTIONS Pursuant to CAR 602.105, the following restrictions are in effect. 1. Tng flts PPR fr APM btwn 23-07 hrs lcl. 2. Dep rwy 06 PPR fr APM btwn 23-07 hrs lcl. 3. Arr & apch rwy 24 PPR fr APM btwn 23-07 hrs lcl. PROCEDURES Pursuant to CAR 602.105, the following procedures are in effect. 1. Circuit alt 2500 ASL for turbo-prop & turbo-jet acft. 2. Rgt hand circuits rwy 12 btwn 23-07 hrs lcl (CAR 602.96). 3. The min alt for the ops of an acft 26,000 Kg & over (max cert gross tkof wt) is 3000 ASL over the Minimum Altitude Area (depicted on VTPC) exc on final apch to Rwy 24, after tkof fr Rwy 6, or circling to land after conducting an inst apch pro. 4. IFR Departures at all times (VFR acft between 04-12Z± wx permitting) Rwy 12-Climb on rwy hdg to 3000 ASL before proceeding on course, (wx permitting). Rwy 30-Climb on rwy hdg to 1300 ASL. Turn left hdg 260°. No rgt turn below 4000 ASL (wx permitting). Rwys 06, 24-Climb on rwy hdg to 3000 ASL (wx permitting) before proceeding on course.
CAUTION	Large ditch 131' fr edge of Twy D along the W side.

HAMILTON VFR TERMINAL PROCEDURES CHART



NAME	IDENT	LAT/LONG
SKYWAY BRIDGE	VCBBR	N43° 18' 00" W079° 47' 45"
WATERDOWN	VCWTD	N43° 19' 45" W079° 53' 15"

ONTARIO

AERODROME / FACILITY DIRECTORY

MOUNT HOPE (WILLOW VALLEY) ON (Heli)**CMH8**

REF	N43 09 53 W79 53 50 Adj ENE 10°W (2024) UTC-5(4) Elev 723' A1900 A5000	
OPR	Willow Valley Golf Course 905-389-1315 Reg PPR	
FLT PLN	FIC London 866-WXBRIEF (Toll free within Canada) or 866-541-4104 (Toll free within Canada & USA)	
HELI DATA	FATO 64' dia GRASS TLOF 17' dia ASPH Safety Area 85' dia Max heli overall length 43'	
RCR	Opr Ltd win maint PN	
COMM	TWR Hamilton 125.0	
PRO	Arr/dep 182° to 206° and 270° to 289° fr heli. Ctc Hamilton twr for specific instructions prior tkof & ldg.	
CAUTION	Hamilton apt adj W of heli. Unmarked p-lines 40 AGL 300' E and along adj road N of heli.	

ONTARIO

AERODROME / FACILITY DIRECTORY

GRAND RIVER EXECUTIVE AIRPORT ON

CPP6

REF	N43 02 15 W79 51 09 1.7ENE York 10°W UTC-5(4) Elev 670' VTA A5000	
OPR	Near North Aviation 905-679-5577 Reg PPR ctc 647-628-5132	
PF	B-1 D-2,3,4,5,6	
FLT PLN		
FIC	London 866-WXBRIEF (Toll free within Canada) or 866-541-4104 (Toll free within Canada & USA)	
RWY DATA	Rwy 16/34 2800x35 ASPH Rwy 07/25 1350x100 GRASS	
RCR	Opr Ltd win maint. Rwy 07/25 may be soft in spring.	
SERVICES		
FUEL	100LL 13-23Z†	
OIL	15W50, W100 plus	
COMM		
ATF	tfc 123.2 5NM 3700 ASL	
CAUTION	P-line 35 AGL along road aprx 230' fr Thld 16. Scrub trees about 40' high aprx 75' fr Thld 07. Ditch at Thld 34. Possible wildlife on rwy.	