
FLIGHT PLAN & SITE SURVEY

N 278-5847 CLUB AIR MODELISTE- St-Apollinaire

May 22, 2026



IMPORTANT NOTICE

Please ensure you have received all required authorizations prior to flight. This Site Survey was created using RPAS Wilco. The user accepts all responsibility for the accuracy of the information.

Terms & Conditions: rpaswilco.com/#tnc

Mission Information

N 278-5847 CLUB AIR MODELISTE- ST-APOLLINAIRE

FLIGHT DETAILS

Reference No:	MAAC-278-5847
Project Name:	CLUB AIR MODELISTE
Pilot Name:	MAAC
Pilot Certificate:	
Mission Type:	VLOS
Flight Start:	May 22, 2026 10:46 PM
Flight End:	May 22, 2026 11:46 PM

LOCATION DETAILS

Flight Address:	St-Apollinaire
Latitude:	46° 37' 53.69" N (46.632)
Longitude:	71° 28' 16.02" W (-71.471)
Field Elevation:	269 ft MSL
Altitude / Radius:	400 ft / 926 m (0.5 nm)
Classification:	UNCONTROLLED
FIR / Contact:	CZUL / 514-633-3365

REPORT CONTENTS

Site Survey • Obstacles (if available) • Nearby Aerodromes • Canadian Aviation Regulations • GFA • Aerodrome Supplements • METAR & TAF • NOTAMs • CFS

Airspace Classification

MISSION LOCATION SURVEY

AIRSPACE MAP



OVERLYING AIRSPACES

Class	Name	Floor	Ceiling
C	Québec, QC d) [TCA]	3500MSL	12500MSL
F	CYA616 (T) QUÉBEC, QC	SFC	4000MSL
E	T914 Fixed RNAV Route	2200AGL	18000MSL
C	Québec, QC b) [TCA]	1500MSL	12500MSL
E	T616 Fixed RNAV Route	2200AGL	18000MSL
E	T677 Fixed RNAV Route	2200AGL	18000MSL
C	Québec, QC a) [TCA]	3500MSL	12500MSL
C	Québec/Jean Lesage Intl, QC [CZ]	SFC	3500MSL
E	T603 Fixed RNAV Route	2200AGL	18000MSL
E	T660 Fixed RNAV Route	2200AGL	18000MSL
E	T781 Fixed RNAV Route	2200AGL	18000MSL
E	Québec/Jean Lesage Intl, QC [TA]	2200AGL	18000MSL
E	3.5.2-5 [CAE]	6000AGL	18000MSL
F	CYR608 DONNACONA, QC	SFC	1200MSL

NEAREST AERODROMES & DISTANCE FROM OPERATION

ST-APOLLINAIRE (AIRPRO) (CAA4 - AERODROME - Reg)	Lat: 46.587	Long: -71.561	8.462KM	4.569NM	SW
NEUVILLE (CNV9 - AERODROME - Reg)	Lat: 46.723	Long: -71.582	13.241KM	7.15NM	NW
LAC ST-AUGUSTIN (CSN8 - WATERDROME - Cert)	Lat: 46.751	Long: -71.394	14.558KM	7.861NM	NE

QUEBEC

AERODROME / FACILITY DIRECTORY

ST-APOLLINAIRE (AIRPRO) QC

CAA4

REF	N46 35 13 W71 33 40 2.6WSW 16°W (2016) UTC-5(4) Elev 380' aprx A5002	
OPR	AirProGyro 418-580-8912/881-1550 Reg PPR	
PF	C-1,2,3,4,5 D-6,7,8	
FLT PLN	(bil)	
FIC	Québec 866-GOMÉTÉO or 866-WXBRIEF (Toll free within Canada) or 866-541-4105 (Toll free within Canada & USA)	
RWY DATA	Rwy 14(143°)/32(323°) 2360x30 GRASS	
RCR	Opr Ltd win maint	
COMM		
ATF	tfc 123.2 4NM 1500 ASL excluding Québec TCA	
CAUTION	Trees aprx 60 AGL mid-field along either side of rwy. Possible paramotor activities SW of A/D (along Marigot side). Class C airspace from 1500 ASL, see Quebec VTPC. P-lines on apch Rwy 14. RPAS ops max 675 ASL (400 AGL) aprx 3NM NNE of A/D May-Dec.	

QUEBEC

AERODROME / FACILITY DIRECTORY

QUÉBEC / NEUVILLE QC

CNV9

REF	N46 43 24 W71 34 57 1.1NE 16°W (2012) UTC-5(4) Elev 314' A5002 LO6 LO7 LO8 T2	
OPR	NeuvilleAero 418-476-8001 Reg PPR 12-02Z† Mon-Fri, 13-02Z† Sat-Sun and hols	
PF	B-1 C-2,3,4,5,6	
FLT PLN	(bil)	
FIC	Québec 866-GOMÉTÉO or 866-WXBRIEF (Toll free within Canada) or 866-541-4105 (Toll free within Canada & USA)	
ACC	Montreal 514-633-3211 or 800-633-1353, all Fit Plns, IFR tng PPR	
SERVICES		
FUEL	100LL, JA PN	
OIL	All	
S	1,4,5,6	
RWY DATA	Rwy 06(064°)/24(244°) 3000x75 ASPH/GRVL Centre 50' ASPH Rwy 24 down 0.7%	
RCR	Opr	
LIGHTING	06-(TE LO), 24-(TE LO) ARCAL-123.35 type J	
COMM		
ATF	UNICOM ltd hrs O/T tfc123.35 5NM below 1500 ASL outside CYQB CZ and Québec TCA and excluding the portion south of the St. Lawrence River.	
TWR	Québec 118.65 236.6 (E)	
TML	Québec 124.0 VFR 127.85 IFR 322.8	
PRO	Note: Acft oprs planning to arr or dep the A/D shall take note of the Québec VTPC and the info on Québec class C airspace; they shall also ctc the OPR in order to obtain auth (PPR) rqr'd in order to be made aware of the arr and dep procedures developed in coordination with Québec tml and Québec/Jean Lesage TWR. Preferential rwy: Rwy 06 for tkof. Rwy 24 for ldg. Circuits: Right hand circuits Rwy 24 (CAR 602.96). Touch and go: No touch and go without prior permission from operator. VFR Codes: In order to minimize delays, ATC freq congestion and for better airspace management, as well as to improve safety, ctc the Montreal ACC at 877-YUL-CODE (877-985-2633), or the FIC at 1-866-GOMETEO or 1-866-WX BRIEF, to provide ATC with info pertaining to your flt to obtain your transponder code at least 30 min prior to a flight into Québec Class C airspace.	
CAUTION	Inst apch at CYQB: Acft flying to Québec / Jean Lesage Intl aprt (CZ 1.8NM ENE of Neuville A/D) on inst apch Rwy 06 can overfly Neuville A/D at 2000ASL. Possibility of deer on the rwy and vic of A/D. Trees 60 AGL final Rwy 24. Blasting area 0.5NM radius N46 42 41 W71 35 02 (aprx 0.7NM S of A/D) sfc to 828 ASL (500 AGL), May-Oct ocsl by NOTAM.	

CANADA WATER AERODROME SUPPLEMENT

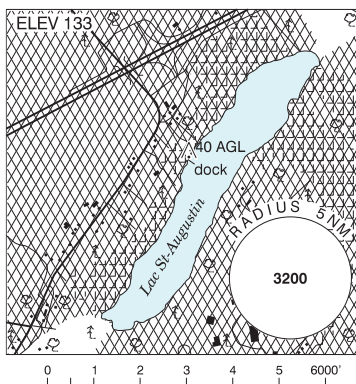
Effective 0901Z 19 March 2026 to 0901Z 18 February 2027

AERODROME/FACILITY DIRECTORY B205

QUÉBEC/LAC ST-AUGUSTIN QC

CSN8

REF	N46 45 05 W71 23 39 6SW 17°W UTC-5(4) Elev 133' A5002
OPR	Luc Forgues 418-955-4455 Cert PPR
PF	B-1,2,3,7 C-4,5,6
FLT PLN	(bil) FIG Québec 866-GOMÉTÉO or 866-WXBRIEF (Toll free within Canada) or 866-541-4105 (Toll free within Canada & USA)
SERVICES	
FUEL	100LL 24 hrs PN
S	4,5,6

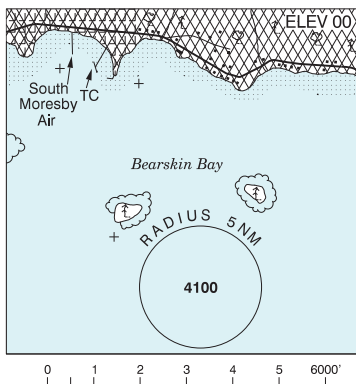


A/D DATA	Open water May-Oct.
COMM	(bil)
RADIO	Québec 123.55 (Above 12,500 ASL) 126.7
ATIS	134.6 128.3
GND	Québec 121.9
TWR	Québec 118.65 236.6 (E) at land A/D 2NM N
PRO	Touch & go forbidden. See Québec/Lac St-Augustin VTPC for effective Noise Operating Restrictions & Noise Abatement Procedures. Ctc Québec gnd prior tkof. If unable, call Québec twr at 418-871-7814.
CAUTION	Land A/D 2NM N.

QUEEN CHARLOTTE CITY BC

CAQ6

REF	N53 15 W132 04 Adj E 19°E (2012) UTC-8(7) Elev 00' A5013
OPR	Queen Charlotte City Harbour Authority 250-559-4650 Reg
PF	C-1 D-3,5,6
FLT PLN	FIG Kamloops 866-WXBRIEF (Toll free within Canada) or 866-541-4101 (Toll free within Canada & USA)
SERVICES	
FUEL	100LL 250-559-4222 PN
S	7



A/D DATA	Tidal range 25', depth 6', rock & mud bottom. Ramp aprx 2NM E. Restricted area behind breakwater. Dock fees ctc Opr.
COMM	
ATF	tfc 123.2 5NM 3000 ASL See PRO section
NAV	
VOR/DME	SANDSPIT YZP 114.1 Ch 88 N53 15 08 W131 48 25 (46')
PRO	Noise sensitive area 1.5NM E & W of dock. No overflight below 2000 AGL. Arr/dep over water. Avoid circuits over town. Ctc Terrace rdo 122.3 296.2 prior to entry into Sandspit CZ. Special VFR tfc advsy procedures apply outside ATF zone, see Section C – Areas With Discrete Air-To-Air Frequencies.