
FLIGHT PLAN & SITE SURVEY

N 925-5863 LES CHUMS DE RENÉ- RENE CENTRE
SPORTIF REGIONAL LOUIS CYR INC.

May 22, 2026



IMPORTANT NOTICE

Please ensure you have received all required authorizations prior to flight. This Site Survey was created using RPAS Wilco. The user accepts all responsibility for the accuracy of the information.

Terms & Conditions: rpswilco.com/#tnc

Mission Information

N 925-5863 LES CHUMS DE RENÉ- RENE CENTRE SPORTIF REGIONAL LOUIS CYR INC.

FLIGHT DETAILS

Reference No:	MAAC-925-5863
Project Name:	LES CHUMS DE RENÉ
Pilot Name:	MAAC
Pilot Certificate:	
Mission Type:	VLOS
Flight Start:	May 22, 2026 10:47 PM
Flight End:	May 22, 2026 11:47 PM

LOCATION DETAILS

Flight Address:	RENE CENTRE SPORTIF REGIONAL LOUIS CYR INC.
Latitude:	45° 11' 33.35" N (45.193)
Longitude:	73° 24' 12.63" W (-73.404)
Field Elevation:	157 ft MSL
Altitude / Radius:	400 ft / 926 m (0.5 nm)
Classification:	UNCONTROLLED
FIR / Contact:	CZUL / 514-633-3365

REPORT CONTENTS

Site Survey • Obstacles (if available) • Nearby Aerodromes • Canadian Aviation Regulations • GFA • Aerodrome Supplements • METAR & TAF • NOTAMs • CFS

Airspace Classification

MISSION LOCATION SURVEY

AIRSPACE MAP



OVERLYING AIRSPACES

Class	Name	Floor	Ceiling
D	St-Jean, QC [CZ]	SFC	3000MSL
E	Montréal, QC [TSP]	700AGL	12500MSL
C	Montréal, QC a) [TCA]	1500MSL	2000MSL
E	St-Jean, QC [TA]	700AGL	18000MSL
E	T705 Fixed RNAV Route	2200AGL	18000MSL
E	3.5.2-4 [CAE]	2000AGL	18000MSL
C	Montréal, QC d) [TCA]	2000MSL	3000MSL
C	Montréal, QC e) [TCA]	3000AGL	5000MSL
C	Montréal, QC f) [TCA]	5000MSL	12500MSL
E	T737 Fixed RNAV Route	2200AGL	18000MSL
E	T721 Fixed RNAV Route	2200AGL	18000MSL
E	T739-2 Fixed RNAV Route	2200AGL	18000MSL
E	Bromont, QC [TA]	700AGL	18000MSL

NEAREST AERODROMES & DISTANCE FROM OPERATION

ST-JEAN (CYJN - AERODROME - Cert)	Lat: 45.294	Long: -73.281	14.798KM	7.99NM	NE
ST-MICHEL (CML9 - HELIPORT - Reg)	Lat: 45.255	Long: -73.551	13.448KM	7.261NM	NW
ST-MATHIEU-DE-LAPRAIRIE (CML8 - AERODROME - Reg)	Lat: 45.311	Long: -73.565	18.261KM	9.86NM	NW

QUEBEC

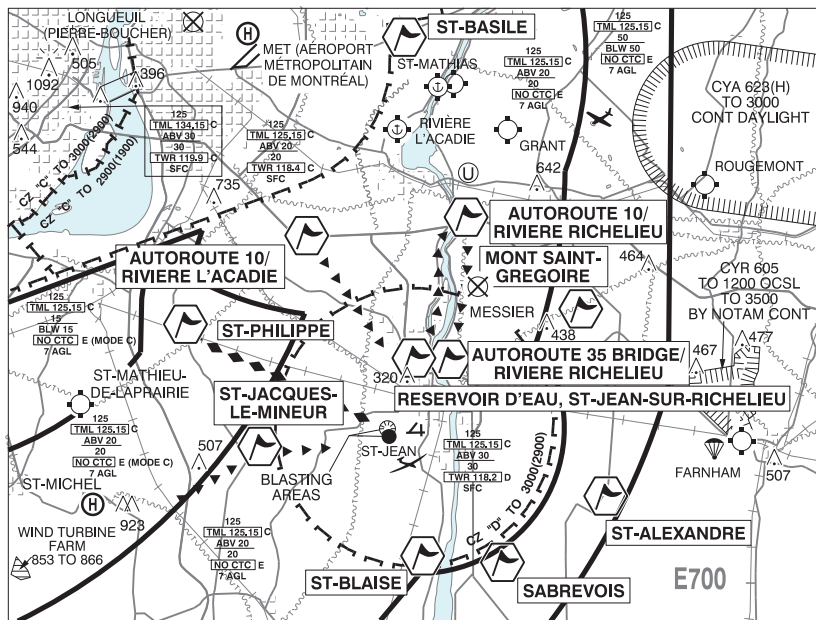
AERODROME / FACILITY DIRECTORY

ST-JEAN QC

CYJN

REF	N45 17 40 W73 16 54 Adj SW 15°W (2012) UTC-5(4) Elev 136' VTA A5002 LO6 LO7 LO8 T2 CAP	
OPR	Muni 450-359-2010 Ext 2068 Cert	
PF	A-7,8 FBO/Apron Password: 1182 B-1 C-2,3,4,5,6	
FLT PLN	(bil)	
FIG	Québec 866-GOMÉTÉO or 866-WXBRIEF (Toll free within Canada) or 866-541-4105 (Toll free within Canada & USA)	
ACC	Montréal 514-633-3211 or 800-633-1353. All Fit Plns, IFR tng fits PPR. Fit Plns by Fax at 514-633-2877 & include phone numbers where pilot can be reached prior to dep. When twr closed IFR clearance or activation 514-633-3014.	
WX	LWIS H24 LAWO 1230-0230Z± Apr-Oct; 13-02Z± Nov-Mar	
SERVICES		
FUEL	100LL, JA-1 (FSII avbl) 14-21Z± Dec-Mar, 13-21Z Apr-May, 13-21Z Mon-Fri, 13-22Z Sat-Sun Jun-Sep; 14-22Z± Oct-Nov	
OIL	W100, 15W30	
S	4,5,6	
PVT ADV	FBO 123.35 450-741-6799	
RWY DATA	Rwy 11(105°)/29(285°) 4012x100 ASPH Thld 11 displ 600'. Rwy 02(015°)/20(195°) 2438x100 ASPH Rwy 06(060°)/24(240°) 2349x100 ASPH	
RWY CERT	Rwy 11/29 AGN IIIA Rwy 02/20 AGN II Rwy 06/24 AGN II	
TWY CERT	Twy: A, B, E AGN II	
TWY	Twy C, E: uncontrolled.	
RCR	Opr or Twr 450-347-4233 15-21Z± O/T PN during business hrs Rwy 06/24 no win maint. CRFI, PCN	
LIGHTING	11-(T ME), 29-(TE ME) ARCAL-118.2 type J	
COMM	(bil)	
GND	121.7 1230-0230Z± Apr-Oct; 13-02Z± Nov-Mar	
TWR	118.2 (V) 1230-0230Z± Apr-Oct; 13-02Z± Nov-Mar (emerg only 450-347-4233) tfc 118.2 0230-1230Z± Apr-Oct; 02-13Z± Nov-Mar 5NM 3000 ASL	
ARR	Montréal 125.15 268.3	
DEP	Montréal 125.15 268.3	
VFR ADV	Montréal Tml 125.15	
PRO	Rgt hand circuits Rwy 11 (CAR 602.96). Intsv glider tng fr aprt to 3NM S dly fr mid-Apr to mid-Aug & wknds Sep-Nov. VFR training not auth 0230-1230Z±. VFR Codes: Refer to MONTRÉAL VTPC section VFR FLIGHTS IN MONTRÉAL/TRUDEAU, MONTRÉAL/MET (AÉROPORT MÉTROPOLITAIN DE MONTRÉAL), MONTRÉAL/MIRABEL AND MONTRÉAL TERMINAL CLASS C AIRSPACE. Training: VFR circuits PPR 1-800-633-1353. See VTPC for heli arr/dep rte.	
CAUTION	Periodic blasting ops 1NM W of aprt, ctc TWR. Possible uncontrolled win maint eqpt on rwy. Increased bird activity Jul-Dec.	

ST-JEAN VFR TERMINAL PROCEDURES CHART



NAME	IDENT	LAT/LONG
AUTOROUTE 10 / RIVIERE L'ACADIE	VCACD	N45° 24' 28" W073° 22' 06"
AUTOROUTE 10 / RIVIERE RICHÉLIEU	VCRIC	N45° 24' 55" W073° 14' 34"
AUTOROUTE 35 BRIDGE / RIVIERE RICHÉLIEU	VCRLU	N45° 19' 37" W073° 15' 36"
MONT SAINT-GREGOIRE	VCGGR	N45° 21' 24" W073° 08' 55"
RESERVOIR D'EAU, ST-JEAN-SUR-RICHÉLIEU	VCRSV	N45° 19' 39" W073° 17' 23"
SABREVOIS	VCSBR	N45° 12' 24" W073° 13' 44"
ST-ALEXANDRE	VCALX	N45° 14' 23" W073° 06' 59"
ST-BASILE	VCSTB	N45° 31' 36" W073° 17' 20"
ST-BLAISE	VCBLA	N45° 13' 14" W073° 18' 04"
ST-JACQUES-LE-MINEUR	VCSJM	N45° 16' 29" W073° 25' 11"
ST-PHILIPPE	VCLPR	N45° 21' 10" W073° 28' 29"

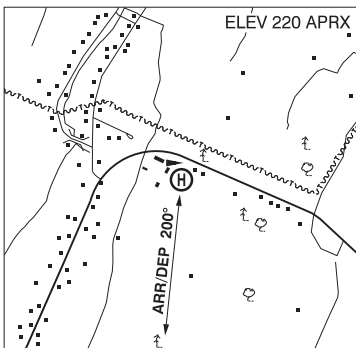
QUEBEC

AERODROME / FACILITY DIRECTORY

ST-MICHEL QC (Heli)

CML9

REF	N45 15 18 W73 33 03 1.3 ENE 14°W (2017) UTC-5(4) Elev 220' aprx VTA A5002
OPR	Chantal Lussier 514-973-4860 Reg PPR
FLT PLN	(bil)
FIC	Québec 866-GOMÉTÉO or 866-WXBRIEF (Toll free within Canada) or 866-541-4105 (Toll free within Canada and the USA)
SERVICES	
FUEL	100LL
HELI DATA	FATO/TLOF 50' x 50' ASPH Safety Area 65' x 65' Max heli overall length 38.6'
RCR	Opr
COMM	(bil)
ATF	tfc 123.2 5NM 2000 ASL outside Montreal TCA
PRO	Arr/dep 200° fr heli



QUEBEC

AERODROME / FACILITY DIRECTORY

ST-MATHIEU-DE-LAPRAIRIE QC

CML8

REF	N45 18 40 W73 33 55 2WSW 14°W (2018) UTC-5(4) Elev 155 VTA A5002	
OPR	Aerolane 514-594-2897 Reg PPR	
PF	C-3,5,6	
FLT PLN	(bil) FIC Québec 866-GOMÉTÉO or 866-WXBRIEF (Toll free within Canada) or 866-541-4105 (Toll free within Canada & USA)	
SERVICES		
FUEL	100LL	
S	1,5	
RWY DATA	Rwy13(127°)/31(307°) 3000x50 GRVL/ASPH, ctr 20' ASPH Thld 13 displ 600' Thld 31 displ 400'	
RCR	Opr	
COMM		
ATF	tfc 123.2 5NM 3200 ASL excluding Montréal/Pierre Elliott Trudeau Intl CZ, Montréal/Met (Aéroport Métropolitain de Montréal) CZ and the airspace that lies within Montreal TCA class C airspace	
CAUTION	Lgtd & unlgtd wind turbines to 607 ASL (456 AGL) W of thld 13 (see sketch) and to 653 ASL (456 AGL) aprx 0.7NM S & SW of A/D. 30 AGL P-line crosses apch to Rwy 31, 1400' fr displ thld.	