
FLIGHT PLAN & SITE SURVEY

H 730-4797 SPECTRUM FLYERS- 48th Avenue

May 22, 2026



IMPORTANT NOTICE

Please ensure you have received all required authorizations prior to flight. This Site Survey was created using RPAS Wilco. The user accepts all responsibility for the accuracy of the information.

Terms & Conditions: rpaswilco.com/#tnc

Mission Information

H 730-4797 SPECTRUM FLYERS- 48TH AVENUE

FLIGHT DETAILS

Reference No:	MAAC-730-4797
Project Name:	SPECTRUM FLYERS
Pilot Name:	MAAC
Pilot Certificate:	
Mission Type:	VLOS
Flight Start:	May 22, 2026 07:47 PM
Flight End:	May 22, 2026 08:47 PM

LOCATION DETAILS

Flight Address:	48th Avenue
Latitude:	49° 5' 27.87" N (49.091)
Longitude:	122° 44' 55.93" W (-122.749)
Field Elevation:	3 ft MSL
Altitude / Radius:	400 ft / 926 m (0.5 nm)
Classification:	UNCONTROLLED
FIR / Contact:	CZVR / 604-586-4500

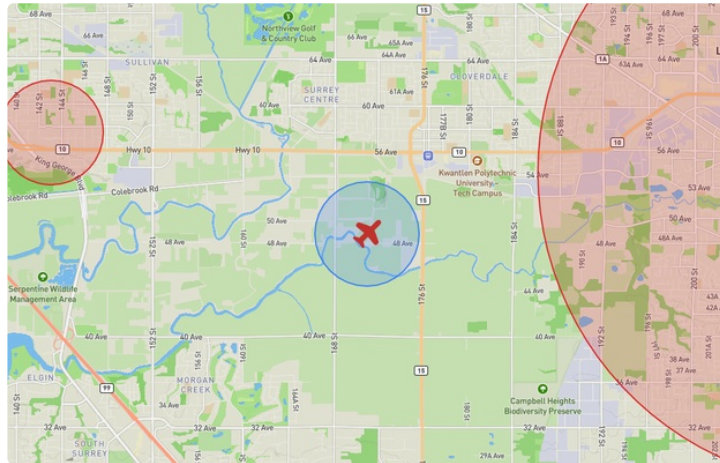
REPORT CONTENTS

Site Survey • Obstacles (if available) • Nearby Aerodromes • Canadian Aviation Regulations • GFA • Aerodrome Supplements • METAR & TAF • NOTAMs • CFS





Flight Map & MODEL Details

MISSION LOCATION SURVEY

FLIGHT AREA MAP



MISSION LOCATION DETAILS

ROLE	LATITUDE	LONGITUDE
 MODEL	49° 5' 27.87" N 49.091	122° 44' 55.93" W -122.749
 Pilot		
 Payload Op.		
 Observer		

Airspace Classification

MISSION LOCATION SURVEY

AIRSPACE MAP



OVERLYING AIRSPACES

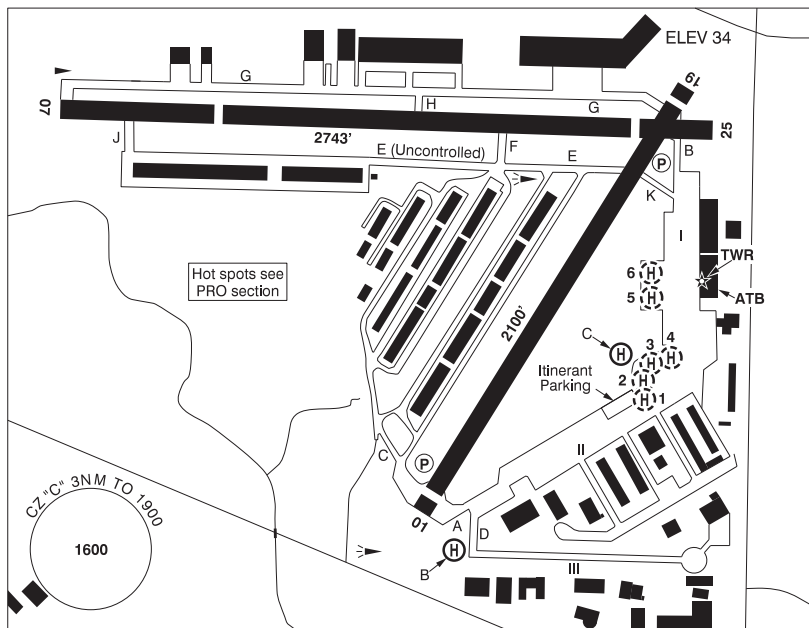
Class	Name	Floor	Ceiling
E	Pitt Meadows, BC b) [CAE]	2000MSL	18000MSL
E	V304 VHF/UHF Airway	2200AGL	18000MSL
C	Vancouver, BC l) [TCA]	4500MSL	6500MSL
F	CYA185 (A,T,H) ALOUETTE LAKE, BC	SFC	4000MSL
F	CYA188 (A,T) GLEN VALLEY, BC	SFC	5500MSL
C	Vancouver, BC s) [TCA]	6500MSL	8500MSL
C	Vancouver, BC t) [TCA]	8500MSL	9500MSL
C	Vancouver, BC u) [TCA]	9500MSL	12500MSL
B	Vancouver, BC v) [TCA]	12500MSL	18000MSL
E	T629 Fixed RNAV Route	2200AGL	18000MSL
E	T800 Fixed RNAV Route	2200AGL	18000MSL
C	Vancouver, BC d) [TCA]	2500MSL	4500MSL
C	Boundary Bay, BC b) [CZ]	1000MSL	2500MSL
E	Pitt Meadows, BC a) [CAE]	1500MSL	18000MSL
D	Vancouver, BC b) [TCA]	1500MSL	2500MSL
D	Abbotsford, BC [TSP]	1500MSL	2500MSL
C	Langley, BC [CZ]	SFC	1900MSL
C	Abbotsford, BC [CZ]	SFC	4500MSL
E	V342-1 VHF/UHF Airway	2200AGL	18000MSL
C	Pitt Meadows, BC [CZ]	SFC	2500MSL
E	T775 Fixed RNAV Route	2200AGL	18000MSL
F	CYR 6.1.0-8 NORTH FRASER PRE-TRIAL CENTRE, BC	SFC	1000MSL
C	Vancouver, BC c) [TCA]	1200MSL	2500MSL
F	CYR 6.1.0-11 SURREY PRE-TRIAL SERVICES CENTRE, BC	SFC	1300MSL
E	V347 VHF/UHF Airway	2200AGL	18000MSL
C	Boundary Bay, BC a) [CZ]	SFC	1000MSL

NEAREST AERODROMES & DISTANCE FROM OPERATION

LANGLEY REGIONAL (CYNJ - AERODROME/HELIPORT - Cert)	Lat: 49.103	Long: -122.627	8.997KM	4.858NM	E
PITT MEADOWS (CAJ8 - WATERDROME - Reg)	Lat: 49.209	Long: -122.709	13.471KM	7.274NM	N
DELTA HERITAGE AIR PARK (CAK3 - AERODROME - Reg)	Lat: 49.079	Long: -122.938	13.847KM	7.477NM	W

LANGLEY REGIONAL BC

CYNJ



REF	N49 06 11 W122 37 36 Adj 17°E (2013) UTC-8(7) Elev 34' VTA A5004 LO2 T1 CAP
OPR	Township of Langley 604-534-7330 APM 1500-0130Z± Cert
PF	B-1,2,3 C-4,5,6
CUST	AOE/CAN
FLT PLN	
FIC	Kamloops 866-WXBRIEF (Toll free within Canada) or 866-541-4101 (Toll free within Canada & USA)
ACC	Vancouver IFR 604-586-4590/4591; IFR tng flts PPR ctc 604-586-4592; ctc Victoria Tml 604-586-4561 for IFR clnc when TWR clsd.
DUAT	APM'S office
WX	LWIS H24 LAWO 1630-0230Z (DT 1530-0330Z)
SERVICES	
FUEL	100LL (self-serve), JA-1 (1530-0100Z± by truck, 604-360-2306)
OIL	All
S	1,2,3,4,5

BRITISH COLUMBIA

AERODROME / FACILITY DIRECTORY

LANGLEY REGIONAL BC (Cont'd)

CYNJ

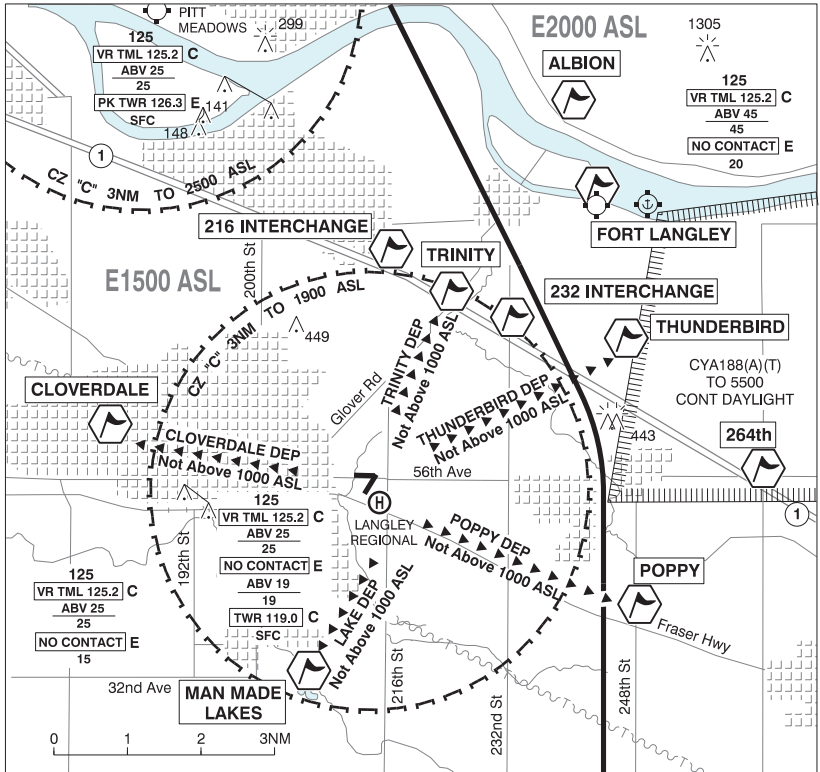
RWY DATA	Rwy 07(075°)/25(255°) 2743x75 ASPH Thld 07 displ 654'. Thld 25 displ 343'. Avbl dur twr oprg hrs only. Ngt ops not auth. Rwy 01(015°)/19(195°) 2100x75 ASPH Thld 01 displ 104'. Thld 19 displ 96'. Rwy 01 preferred rwy when twr clsd. Rwy 01 designated calm wind rwy.
RWY CERT	Rwy 01/19 AGN I Rwy 07/25 AGN I
TWY	Twy E uncontrolled west of Twy F.
APRON	Apron I & II wing tip clearance less than 50' wide in some areas
RCR	Twr 604-514-9324 RSC 1600-0100Z± No win maint Aprt rstd to a max wt of 12,500 lbs exc with opr auth
HELI DATA	B - FATO 110' dia ASPH TLOF 28' dia ASPH Safety Area 143' dia Max heli length 58' (exc with opr apr) 20,500 lbs. Medevac flt only 06-15Z±. C - FATO/TLOF 85' dia ASPH Safety Area 110' dia Max heli overall length 59' (exc with ops apr). 20,500lbs. Day only. Parking Pad 1: 31' dia CONC 3600 lbs For temporary prkg and refueling only (100LL only). Parking Pads 2-4: 31' dia CONC 3600 lbs Private. Parking Pads 5 & 6: 66' dia ASPH 14,000lbs Max heli overall length 55'
LIGHTING	01-(TE ME) P1 4.5°, 19-(TE ME) AP 4.0° Lgts on automatic timer single setting after twr hrs to 07Z±. FATO-B: RW no aiming pt (LO) ARCAL-119.0 type J (FATO-B use ONLY, No ARCAL on rwy)
COMM	ATIS 124.5 1630-0230Z (DT 1530-0330Z) GND 121.9 1630-0230Z (DT 1530-0330Z) TWR 119.0 (V) 1630-0230Z (DT 1530-0330Z) (emerg only 604-534-9443) MF tfc 119.0 0230-1630Z (DT 0330-1530Z) 3NM 1900 ASL (CAR 602.98)
NAV	VOR PITT MEADOWS YPK 112.4 N49 12 57 W122 42 54 (44')

LANGLEY REGIONAL BC (Cont'd)

CYNJ

PRO	<p>No circuits on any rwy from 2130-0800 local time.</p> <p>Pilots should refer to Canadian Airport Charts (CAC) to obtain details on established hot spots, prior to operating on maneuvering areas. CAC are available for free on the NAV CANADA website.</p> <p>ALL DEPARTURES: Ctc 121.9 after run-up or prior to entering twy with TYPE / IDENT / POSITION / INTENTIONS / RUN UP COMPLETE</p> <p>RWY 19 DEPARTURES: Best rate of climb. Climb rwy hdg til S of Fraser Hwy. Turn left track aprx 160° to follow green belt. Make crosswind turn S of 44th Ave over Langley Golf Centre. Make turn to downwind E of 224th St towards Tall Timbers Golf Course. Follow VTPC FIXED WING CIRCUITS RWY 19. Avoid fit over built up areas on crosswind and downwind legs. Circuit altitude 1000 ASL.</p> <p>RWY 25 DEPARTURES: Rgt hand circuits (CAR 602.96). Best rate of climb. Rwy 07/25 shall not be used when twr is clsd.</p> <p>VFR ARR/DEP ROUTES: See FIXED WING ARR/DEP VTPC</p> <p>ATS REQUIREMENTS: All VFR acft arriving, departing or transiting the Vancouver or Victoria Tower Class C or D airspace require a transponder code. - All acft departing Vancouver or Victoria Intl (including Water Aerodrome) call Kamloops FIC at 866-541-4101 or PAC RDO 122.5 or 123.15 for code assignment at least 30 min prior to flight or file a VFR Flight Plan/Flight Itinerary. - All acft arriving Vancouver, Victoria Intl (including Water Aerodrome) or transiting Vancouver or Victoria Control Zones obtain a code from one of the following ATS units: Vancouver Harbour, Nanaimo, Victoria Harbour, Boundary Bay, Langley, Abbotsford or Pitt Meadows or call Kamloops FIC at 866-541-4101 or PAC RDO 122.5 or 123.15. - All acft arriving Victoria Intl from a non NAV CANADA site call Kamloops FIC at 866-541-4101 or PAC RDO 122.5 or 123.15 for code assignment at least 30 minutes prior to flight or file a VFR Flight Plan/ Flight Itinerary.</p> <p>HELI Day: East route dep expedite climb to 600 ASL prior to 232nd street. East of 232nd street commence climb to 1000 ASL. East route arr maintain 1000 ASL descend to 600 ASL prior to 232nd street. South East route dep expedite climb to 1000 ASL prior to 216th street. South East route arr maintain 1000 ASL to 216th street. North route dep expedite climb to 600 ASL prior to Milner. North of Milner commence climb to 1000 ASL. North route arr maintain 1000 ASL descend to 600 ASL prior to Milner. Night: North route arr/dep overfly Rwy 01 min alt 1000 at Milner. West route arr/dep overfly Fraser hwy min alt 1000 ASL at bypass. Medium to hvy heli are only permitted to gnd taxi on Apron III. Hover taxiing on Apron III proh unless coordinated with APM. All Heli must ctc GND 121.9 for transponder code and routing info.</p>
CAUTION	<p>Trees to 100 AGL 250' SE pad B, 250' W Thld 07, and S of Fraser hwy. Only pilots familiar with airport should use airport dur hrs of darkness. Use caution when taxiing on Apron I & II due to min wing-tip clearance and frequent heli ops. Frequent heli arr/dep on Aprons I & II. ATC ctc not rqrd for vehicle and fixed-wing movement on aprons. Heli aiming point at eastern end of Apron III. Ocsl wildlife.</p>

LANGLEY REGIONAL VFR TERMINAL PROCEDURES CHART / FIXED WING ARR/DEP



NAME	IDENT	LAT/LONG
216 INTERCHANGE	VCEXC	N49° 09' 08" W122° 37' 27"
232 INTERCHANGE	VCXCH	N49° 08' 11" W122° 34' 53"
264th	VCXYZ	N49° 06' 06" W122° 29' 36"
ALBION	VCABN	N49° 11' 12" W122° 33' 36"
CLOVERDALE	VCCLV	N49° 06' 42" W122° 43' 24"
FORT LANGLEY	VCLNG	N49° 10' 00" W122° 33' 06"
MAN MADE LAKES	VCMLL	N49° 03' 17" W122° 39' 11"
POPPY	VCPPY	N49° 04' 12" W122° 32' 12"
THUNDERBIRD	VCTBD	N49° 07' 54" W122° 32' 28"
TRINITY	VCTNY	N49° 08' 33" W122° 36' 10"

**LANGLEY REGIONAL VFR TERMINAL PROCEDURES CHART / FIXED WING
ARR/DEP (Cont'd)**

ARRIVAL

Obtain ATIS 124.5.

Contact tower 119.0 five miles from airport at 1500 ASL or above.

Provide TYPE / IDENT / POSITION / INTENTIONS on initial call.

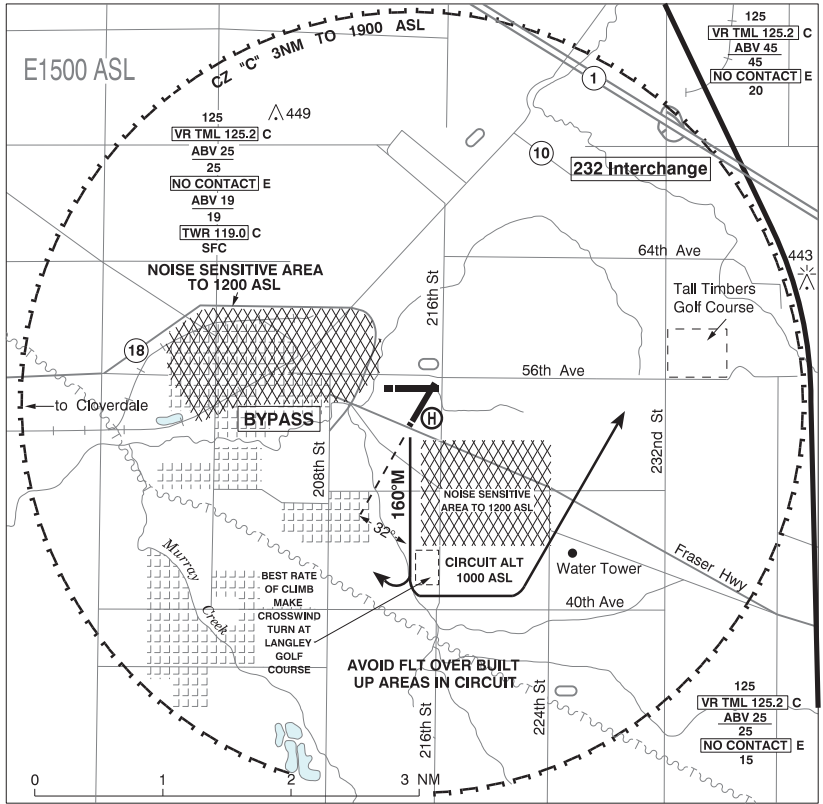
DEPARTURE

Follow local noise avoidance procedures.

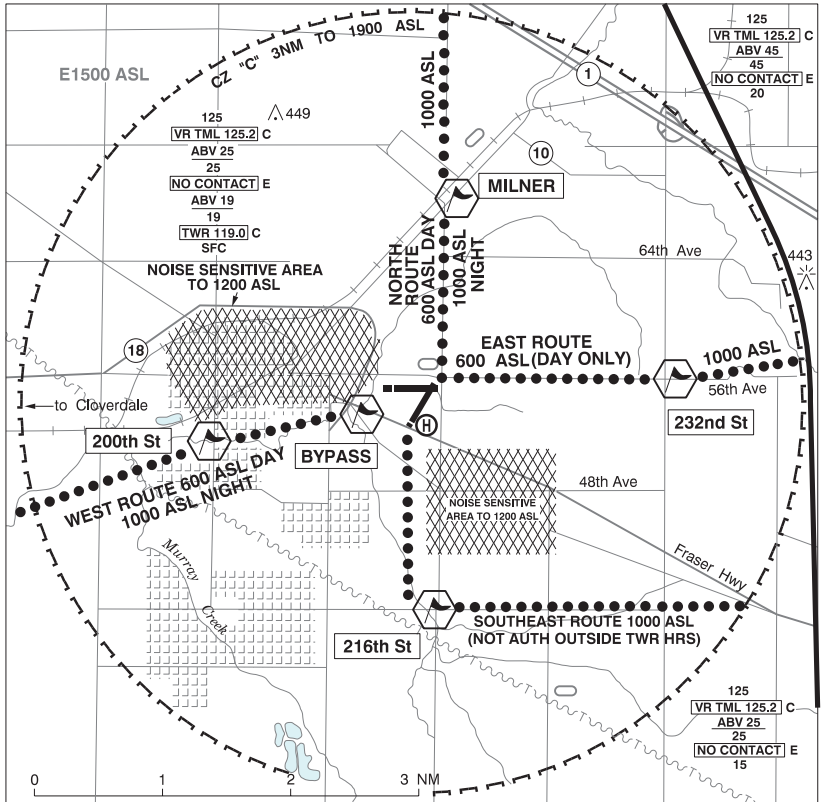
Intercept outbound route 1 mile from airport.

Maintain 1000 ASL until exiting the Control Zone or instructed by ATC.

LANGLEY REGIONAL VFR TERMINAL PROCEDURES CHART / FIXED WING CIRCUITS RWY 19



LANGLEY REGIONAL VFR TERMINAL PROCEDURES CHART / HELI



NAME	IDENT	LAT/LONG
200th St	VCXCC	N49° 05' 45" W122° 40' 07"
216th St	VCXVI	N49° 04' 28" W122° 37' 29"
232nd St	VCSND	N49° 06' 14" W122° 34' 52"
BYPASS	VCBYP	N49° 06' 04" W122° 38' 35"
MILNER	VCMER	N49° 07' 35" W122° 37' 29"

DEP/ARR AC provide TYPE / IDENT / POSITION / INTENTIONS on initial call.

CANADA WATER AERODROME SUPPLEMENT

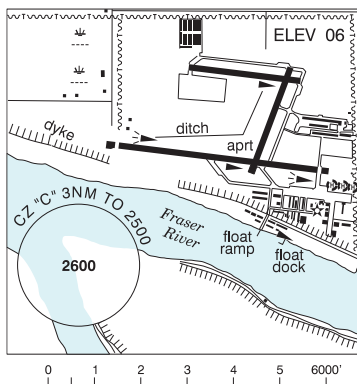
Effective 0901Z 19 March 2026 to 0901Z 18 February 2027

AERODROME/FACILITY DIRECTORY B181

PITT MEADOWS BC

CAJ8

REF	N49 12 34 W122 42 34 1SW 17°E (2013) UTC-8(7) Elev 06' VTA A5004
OPR	Pitt Meadows Aprt Society 604-465-8977 15-01Z† Mon-Fri Reg
PF	A-1,2,3,7 at adj land A/D C-4,5,6
FLT PLN	
 FIC	Kamloops 866-WXBRIEF (Toll free within Canada) or 866-541-4101 (Toll free within Canada & USA)
 WX	LWIS H24 LAWO 15-07Z†



SERVICES	
 FUEL	100LL, JA-1 at adj land A/D
 OIL	All
 S	1,2,3,4,5 at adj land A/D

A/D DATA	Tidal range 4', current 3-8 kt.
-----------------	---------------------------------

COMM	
 ATIS	125.0 15-07Z†
 GND	123.8 15-07Z†
 TWR	Pitt 126.3 (V) 15-07Z†
 MF	tfc 126.3 07-15Z† 3NM 2500 ASL (CAR 602.98)

NAV	
 VOR	YPK 112.4 N49 12 57 W122 42 54

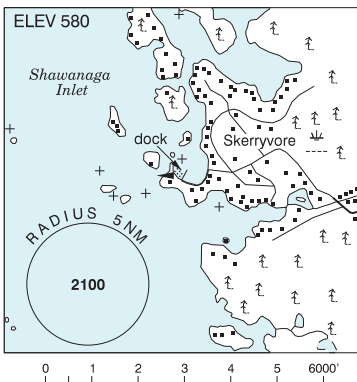
PRO	Circuit altitude for seaplanes 500 ASL, all circuits on S side of Fraser River. Arr/dep avoid low flt over built-up areas, or as directed by ATC. Eastbound dep on Fraser River initiate tkof W of float ramp, or as directed by ATC.
------------	---

CAUTION	Drifting logs. Lower end of seaplane launching ramp is less than 1' below zero tide level; caution at low tides.
----------------	--

POINTE AU BARIL STATION ON

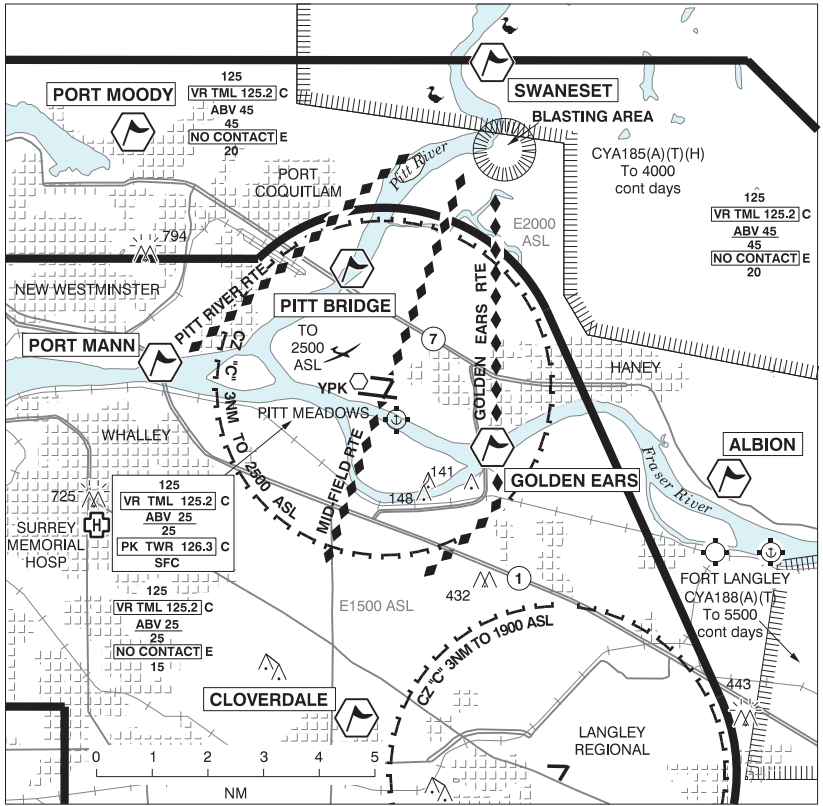
CPB6

REF	N45 32 24 W80 23 15 4SW 11°W UTC-5(4) Elev 580' A5000
OPR	Jeremy and Ryan Edwards 647-202-9995 or 416-400-5244 Reg
PF	B-5
FLT PLN	
 FIC	London 866-WXBRIEF (Toll free within Canada) or 866-541-4104 (Toll free within Canada & USA)
A/D DATA	Open water May-mid Nov, sandy bottom. Dock depth 5'.
COMM	
 ATF	tfc 123.2 5NM 3600 ASL



CAUTION	Rock shoal 82' NE of boathouse marked with white buoy. Enter bay from N. Remain E of island.
----------------	--

PITT MEADOWS VFR TERMINAL PROCEDURES CHART



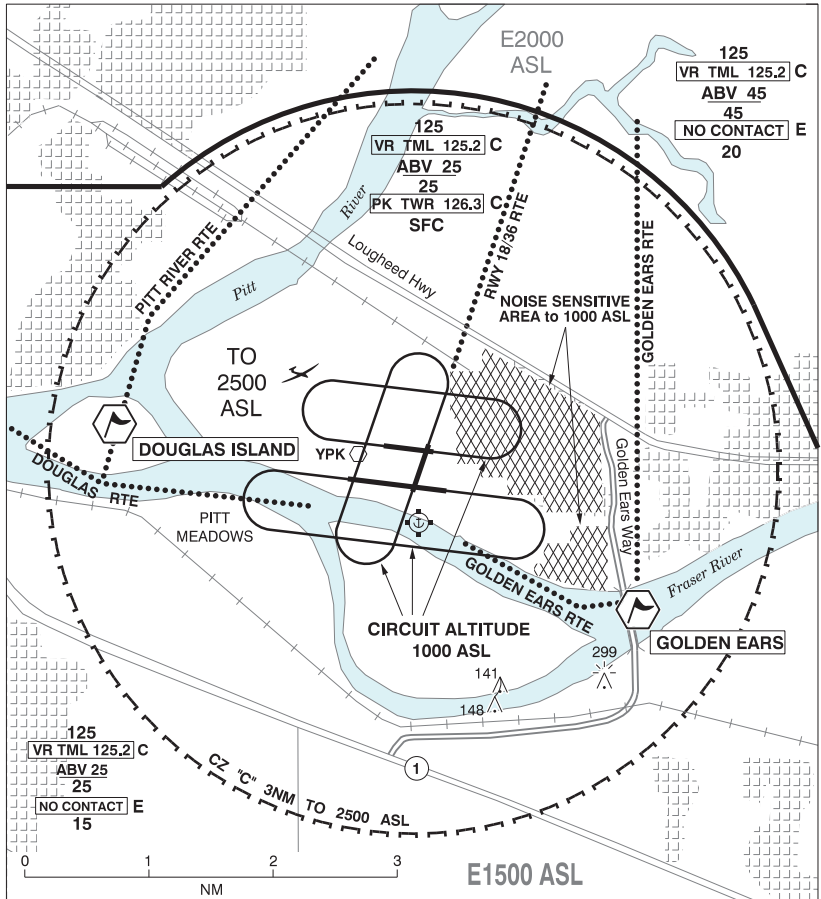
BRITISH COLUMBIA

AERODROME / FACILITY DIRECTORY

PITT MEADOWS VFR TERMINAL PROCEDURES CHARTS

NAME	IDENT	LAT/LONG
ABERNETHY	VCANY	N49° 13' 54" W122° 39' 24"
ANTENNAS	VCANS	N49° 09' 42" W122° 43' 54"
ALBION	VCABN	N49° 11' 12" W122° 33' 36"
CLOVERDALE	VCCLV	N49° 06' 42" W122° 43' 24"
COLLEGE	VCOLG	N49° 12' 54" W122° 39' 06"
COLONY FARMS	VCLFM	N49° 14' 12" W122° 48' 12"
DOUGLAS ISLAND	VCDGS	N49° 13' 12" W122° 46' 24"
FORT LANGLEY	VCLNG	N49° 10' 00" W122° 33' 06"
GOLDEN EARS	VCGER	N49° 11' 48" W122° 39' 54"
HAMMOND	VCHMD	N49° 12' 18" W122° 38' 54"
MEADOW GARDENS	VCMGD	N49° 14' 00" W122° 40' 32"
PITT BRIDGE	VCPTB	N49° 14' 48" W122° 43' 48"
PITT MEADOWS	VCPIT	N49° 13' 00" W122° 42' 54"
PORT MANN	VCPMN	N49° 13' 18" W122° 49' 00"
PORT MOODY	VCPMD	N49° 17' 18" W122° 49' 42"
RAILYARD	VCRRY	N49° 15' 42" W122° 46' 06"
SWANESET	VCSWN	N49° 18' 30" W122° 39' 48"
TYNEHEAD	VCTYN	N49° 11' 30" W122° 46' 42"
WALNUT	VCWNT	N49° 10' 48" W122° 40' 00"

PITT MEADOWS VFR TERMINAL PROCEDURES CHART - HELI ARR/DEP PROCEDURES, CIRCUIT PATTERNS & NOISE SENSITIVE AREA



DOUGLAS ROUTE

DEP via Fraser River to Douglas Island, not abv 500 until Douglas Island.

APCH Douglas Island, not abv 500, then eastbound via Fraser River.

PITTS RIVER ROUTE

DEP via Fraser River to Douglas Island, then northbound W of Pitt River, not abv 500 until Lougheed Hwy.

APCH W of Pitt River to Douglas Island, not abv 500, then eastbound via Fraser River.

RWY 18/36 ROUTE

DEP and overfly Rwy 36 to Lougheed Hwy, not abv 500 until Lougheed Hwy.

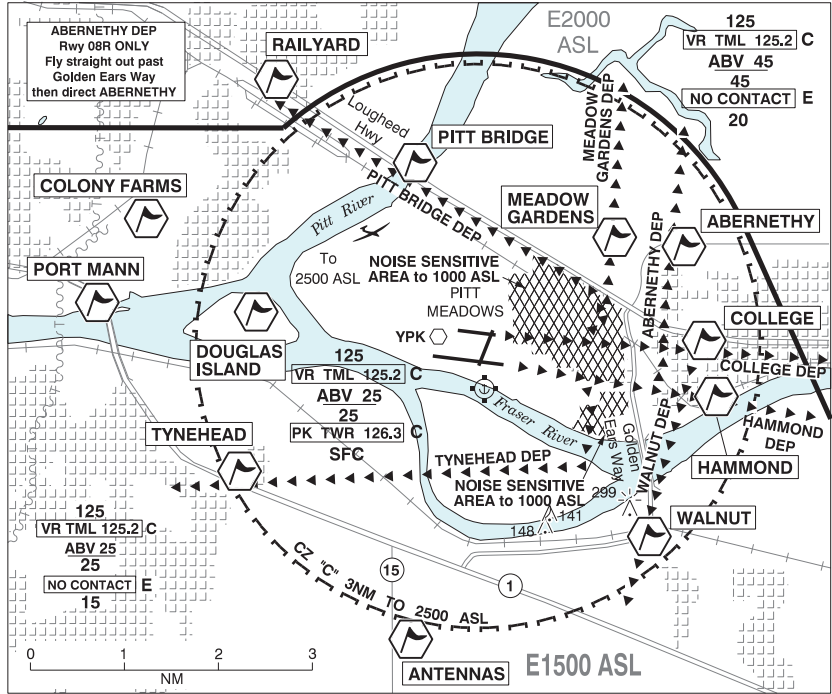
APCH straight-in Rwy 18, not abv 500. When authorized, overfly Rwy 18 to cross parallel Rws.

GOLDEN EARS ROUTE

DEP via Fraser River past Golden Ears Bridge, then northbound E of Golden Ears Way, not abv 500 until Lougheed Hwy.

APCH E of Golden Ears Way, not abv 500 to Golden Ears Bridge, then westbound via Fraser River.

PITT MEADOWS VFR TERMINAL PROCEDURES CHART - RWY 08L & 08R ARR/DEP

**DEPARTURES**

All departures not above 1000 until cleared higher. See map for routing.

ARRIVALS

All arrivals not below 1500 until cleared lower, except where stated otherwise.

PITT BRIDGE ARR - RWY 08L ONLY

Fly direct PITT BRIDGE, then join left base.

RAILYARD ARR - RWY 08R ONLY

Fly direct RAILYARD, then direct DOUGLAS ISLAND, then straight in.

COLONY ARR - RWY 08L ONLY

Fly direct COLONY FARMS, then straight in.

No altitude restriction.

PORT MANN ARR - RWY 08R ONLY

Proceed via PORT MANN, then direct DOUGLAS ISLAND, then straight in. No altitude restriction.

TYNEHEAD ARR

Fly direct TYNEHEAD, then join assigned right base.

ANTENNAS ARR

Fly direct ANTENNAS, then join assigned right downwind.

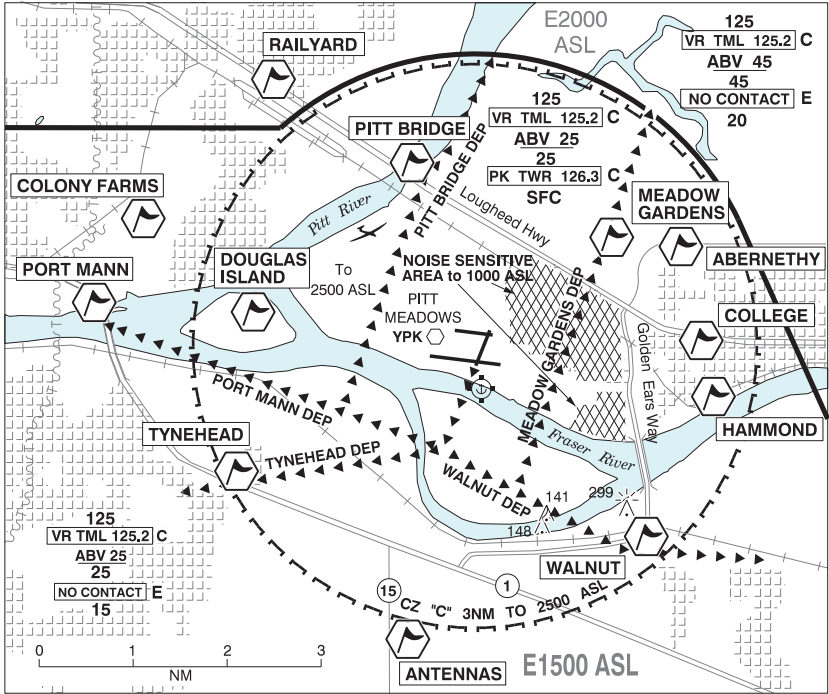
WALNUT ARR

Fly direct WALNUT, then join assigned right downwind.

ABERNETHY ARR

Fly direct ABERNETHY, then join assigned left downwind.

PITT MEADOWS VFR TERMINAL PROCEDURES CHART - RWY 18 ARR/DEP

**DEPARTURES**

All departures not above 1000 until cleared higher. See map for routing.

ARRIVALS

All arrivals not below 1500 until cleared lower.

TYNEHEAD ARR

Fly direct TYNEHEAD, then join right downwind.

COLONY ARR

Fly direct COLONY FARMS, then join midfield right downwind.

PITT BRIDGE ARR

Fly direct PITT BRIDGE, then join right base.

ABERNETHY ARR

Fly direct ABERNETHY, then join left base.

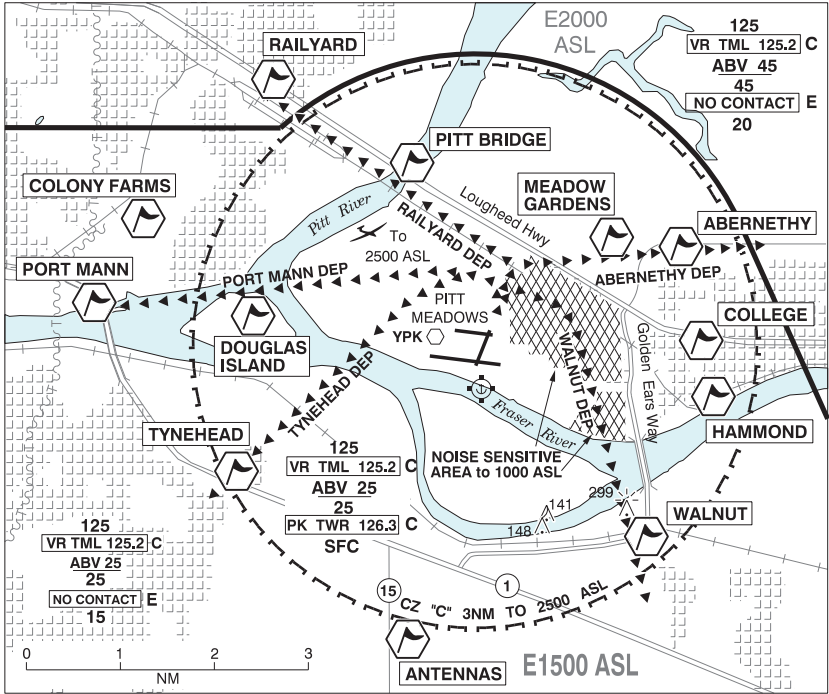
HAMMOND ARR

Fly direct HAMMOND, then join midfield left downwind.

WALNUT ARR

Fly direct WALNUT, then join left downwind.

PITT MEADOWS VFR TERMINAL PROCEDURES CHART - RWY 36 ARR/DEP

**DEPARTURES**

All departures not above 1000 until cleared higher. See map for routing.

ARRIVALS

All arrivals not below 1500 until cleared lower.

TYNEHEAD ARR

Fly direct TYNEHEAD, then join left base.

COLONY ARR

Fly direct COLONY FARMS, then join midfield left downwind.

PITT BRIDGE ARR

Fly direct PITT BRIDGE, then join left downwind.

MEADOW GARDENS ARR

Fly direct MEADOW GARDENS, then join right downwind.

HAMMOND ARR

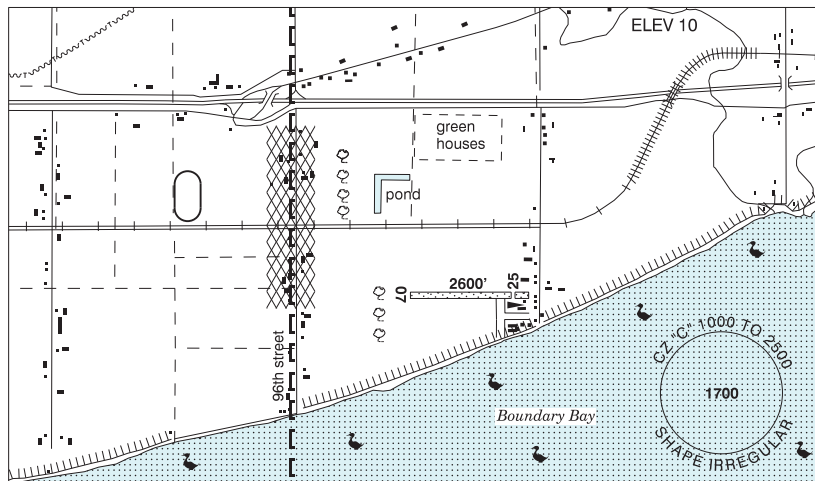
Fly direct HAMMOND, then join midfield right downwind.

WALNUT ARR

Fly direct WALNUT, then join right base.

DELTA / DELTA HERITAGE AIR PARK BC

CAK3



REF	N49 04 43 W122 56 17 4.5E 17°E (2013) UTC-8(7) Elev 10' VTA A5004
OPR	Recreational Aircraft Association, Chap 85 (DapCom) 604-543-8894, Caretaker 604-722-3791 Reg PPR by phone 604-878-9050
PF	B-1 C-2,3,6 D-4,5
FLT PLN	FIC Kamloops 866-WXBRIEF (Toll free within Canada) or 866-541-4101 (Toll free within Canada & USA)
SERVICES	FUEL 100LL S 4,5
RWY DATA	Rwy 07/25 2600x75 GRASS Thld 25 displ 300'
RCR	Opr No win maint. Rwy soft when wet
COMM	ATIS Boundary Bay 125.5 15-07Z† ATF tfc 123.3 2NM below 1000 ASL Excluding that portion which penetrates Boundary Bay class "C" airspace.

DELTA / DELTA HERITAGE AIR PARK BC (Cont'd)

CAK3

PRO

HELI
NOISE

Heli tng not auth.

Circuit alt 600 ASL. Rgt hand circuits Rwy 25 (CAR 602.96).

NOISE ABATEMENT PROCEDURES:

Departures:

Rwy 25 Dep: When safe hdg 280°, then further right turn to crosswind to avoid noise sensitive area.

Downwind dep auth fr Rwy 25 at 600 ASL. No southbound dep until clear of circuit to E. Avoid flt over dike and adj water area below 600 ASL.

Arrivals:

All arr to air park fr seaside. Cross midfield at 600 ASL and join downwind (CAR 602.96).

Rwy 07 Arr: Fr downwind, turn on base leg well bfr 96th Street to avoid noise-sensitive area. When S of railway tracks hdg 100° to intercept final apch E of row of trees.

Boundary Bay A/D 2.5NM W, obtain clnc prior to entering Boundary Bay CZ. Refer to VTPC. Procedures for crossing the Southern Strait of Georgia within Tml Class C airspace refer to Vancouver Intl VTPC FOR CROSSING THE SOUTHERN STRAIT OF GEORGIA ABOVE 2500FT.

CAUTION

Extremely confined circuit. Trees 750' fr thld Rwy 07, trees and obst adj to thld Rwy 25. Acft unable to accommodate noise abatement procedures and obst avoidance should avoid the air park. Beware of Boundary Bay A/D tfc close to Delta Heritage Air Park.