

---

# FLIGHT PLAN & SITE SURVEY

---

D 568-5008 NORTH OF SUPERIOR FLYERS- PINEVIEW  
AIRPARK

May 22, 2026



## IMPORTANT NOTICE

Please ensure you have received all required authorizations prior to flight. This Site Survey was created using RPAS Wilco. The user accepts all responsibility for the accuracy of the information.

Terms & Conditions: [rpaswilco.com/#tnc](https://rpaswilco.com/#tnc)

# Mission Information

D 568-5008 NORTH OF SUPERIOR FLYERS- PINEVIEW AIRPARK

## FLIGHT DETAILS

Reference No:	<b>MAAC-568-5008</b>
Project Name:	<b>NORTH OF SUPERIOR FLYERS</b>
Pilot Name:	<b>MAAC</b>
Pilot Certificate:	
Mission Type:	<b>VLOS</b>
Flight Start:	<b>May 22, 2026 10:49 PM</b>
Flight End:	<b>May 22, 2026 11:49 PM</b>

## LOCATION DETAILS

Flight Address:	<b>PINEVIEW AIRPARK</b>
Latitude:	<b>48° 23' 32.30" N ( 48.392 )</b>
Longitude:	<b>89° 35' 0.20" W ( -89.583 )</b>
Field Elevation:	<b>883 ft MSL</b>
Altitude / Radius:	<b>400 ft / 926 m ( 0.5 nm )</b>
Classification:	<b>UNCONTROLLED</b>
FIR / Contact:	<b>CZWG / 204-983-8338</b>

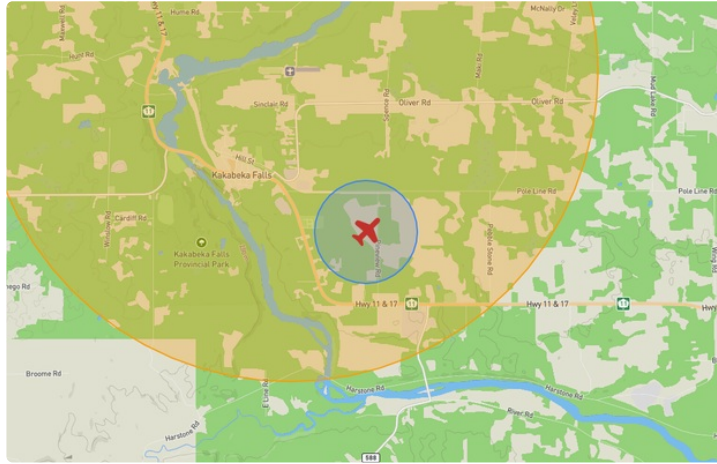
## REPORT CONTENTS

Site Survey • Obstacles (if available) • Nearby Aerodromes • Canadian Aviation Regulations • GFA • Aerodrome Supplements • METAR & TAF • NOTAMs • CFS





# Flight Map & MODEL Details

MISSION LOCATION SURVEY

## FLIGHT AREA MAP



## MISSION LOCATION DETAILS

ROLE	LATITUDE	LONGITUDE
 MODEL	48° 23' 32.30" N 48.392	89° 35' 0.20" W -89.583
 Pilot		
 Payload Op.		
 Observer		

# Airspace Classification

MISSION LOCATION SURVEY

## AIRSPACE MAP



## OVERLYING AIRSPACES

Class	Name	Floor	Ceiling
E	T331 Fixed RNAV Route	2200AGL	18000MSL
E	Thunder Bay, ON b) [CAE]	3000MSL	12500MSL
E	T765-3 Fixed RNAV Route	2200AGL	18000MSL
E	Thunder Bay, ON [TA]	2000MSL	12500MSL
E	Thunder Bay, ON c) [CAE]	4000MSL	12500MSL
E	3.3.1-49 [TA]	3000MSL	12500MSL
E	T675 Fixed RNAV Route	2200AGL	18000MSL
D	Thunder Bay, ON [CZ]	SFC	4000MSL
E	T681 Fixed RNAV Route	2200AGL	18000MSL
B	Thunder Bay, ON d) [CAE]	12500MSL	18000MSL
E	T702 Fixed RNAV Route	2200AGL	18000MSL
E	T776 Fixed RNAV Route	2200AGL	18000MSL
E	T810 Fixed RNAV Route	2200AGL	18000MSL

## NEAREST AERODROMES & DISTANCE FROM OPERATION

KAKABEKA FALLS (CKG8 - AERODROME - Reg)	Lat: 48.418	Long: -89.602	3.202KM	1.729NM	NW
MARTIN'S LANDING (CML5 - AERODROME - Reg)	Lat: 48.293	Long: -89.543	11.402KM	6.157NM	S
THUNDER BAY (CYQT - AERODROME - Cert)	Lat: 48.372	Long: -89.322	19.461KM	10.508NM	E

## ONTARIO

## AERODROME / FACILITY DIRECTORY

## KAKABEKA FALLS ON

CKG8

<b>REF</b>	N48 25 06 W89 36 07 1NE 2°W UTC-5(4) Elev 1000' A5001 A5008	
<b>OPR</b>	Kakabeka Falls Flying Club Inc 807-474-0970 or 807-627-7075 Reg PPR	
<b>PF</b>	C-2	
<b>FLT PLN</b>	Pilots to open/close VFR flt plan with London rdo, FISE or by phone	
<b>FIC</b>	London 866-WXBRIEF (Toll free within Canada) or 866-541-4104 (Toll free within Canada & USA)	
<b>RWY DATA</b>	Rwy 09(088°)/27(268°) 2120x130 GRASS	
<b>RCR</b>	Opr No win maint. Rwy soft when wet.	
<b>COMM</b>		
<b>ATF</b>	tfc 123.0 3NM 3000 ASL	
<b>CAUTION</b>	Extv flt tng within 35NM W & N of Thunder Bay CZ to 6000 ASL. Seaplane tfc Adj N.	

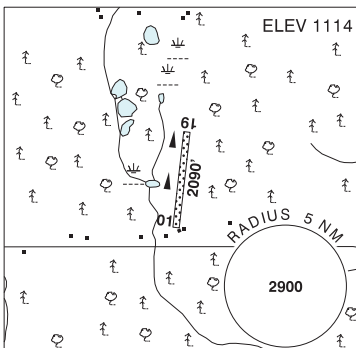
**ONTARIO**

**AERODROME / FACILITY DIRECTORY**

**THUNDER BAY (MARTIN'S LANDING) ON**

**CML5**

<b>REF</b>	N48 17 37 W89 32 36 14WSW 3°W (2016) UTC-5(4) Elev 1114' A5001 A5008
<b>OPR</b>	Richard A. Martin 807-344-0071 Reg PPR
<b>FLT PLN</b>	Pilots to open/close VFR fit plan with London rdo, FISE or by phone London 866-WXBRIEF (Toll free within Canada) or 866-541-4104 (Toll free within Canada & USA)
<b>SERVICES</b>	
<b>OIL</b>	20W50, 80, 100
<b>S</b>	1,4,5,6,7
<b>RWY DATA</b>	Rwy 01(010°)/19(190°) 2090x80 GRASS/SNOW
<b>RCR</b>	Opr Rwy soft when wet
<b>COMM</b>	
<b>ATF</b>	tfc 122.8 3NM 3200 ASL
<b>PRO</b>	Rgt hand circuits Rwy 01 (CAR 602.96). Circuit hgt 2100 ASL all runways.
<b>CAUTION</b>	Trees 50 AGL N & S of rwy

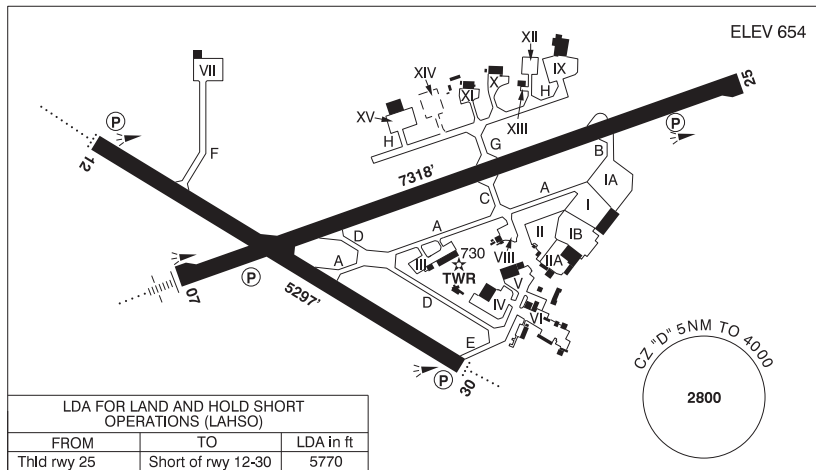


ONTARIO

AERODROME / FACILITY DIRECTORY

THUNDER BAY ON

CYQT



<b>REF</b>	N48 22 19 W89 19 18 Adj SW 4°W (2014) UTC-5(4) Elev 654' A5001 A5008 L04 H14 T2 CAP
<b>OPR</b>	Thunder Bay Intl Apts Authority Inc (TBIAAI) 807-473-2600 1000-0430Z‡ Cert Ldg fees
<b>PF</b>	A-1,2,3,6,7 C-4,5
<b>CUST</b>	AOE/40 888-226-7277 13-05Z‡
<b>FLT PLN</b>	Pilots to open/close VFR flt plan with London rdo, FISE or by phone
<b>FIG</b>	London 866-WXBRIEF (Toll free within Canada) or 866-541-4104 (Toll free within Canada & USA)
<b>WX</b>	METAR H24. TAF H24, issue times: 02, 08, 14, 20Z. WxCam
<b>SERVICES</b>	
<b>FUEL</b>	100LL, JA-1 (FSII avbl), HPR 1030-0330Z‡
<b>OIL</b>	All & Turbo 35
<b>S</b>	1,2,3,4,5,6,7
<b>ARFF</b>	DESIGNATED CAT 7 1000-0430Z‡ O/T call out chg, etc Duty Mgr 807-625-0595, aprt clsd to acft 20 seats & abv, exc for diversions or as an altn A/D without PPR.
<b>SUP FL</b>	LHOX
<b>JASU</b>	CE14
<b>PVT ADV</b>	Thunder Bay Flight Refuelling (World Fuel Services) 123.2 1030-0330Z‡ O/T 807-577-1178; SkyFill Aviation Refuelling Inc (Shell) 122.85 0930-0130Z‡ O/T 807-475-5915
<b>MIL CON</b>	SkyFill Aviation Refuelling Inc (Shell) 122.85 807-475-5915

## ONTARIO

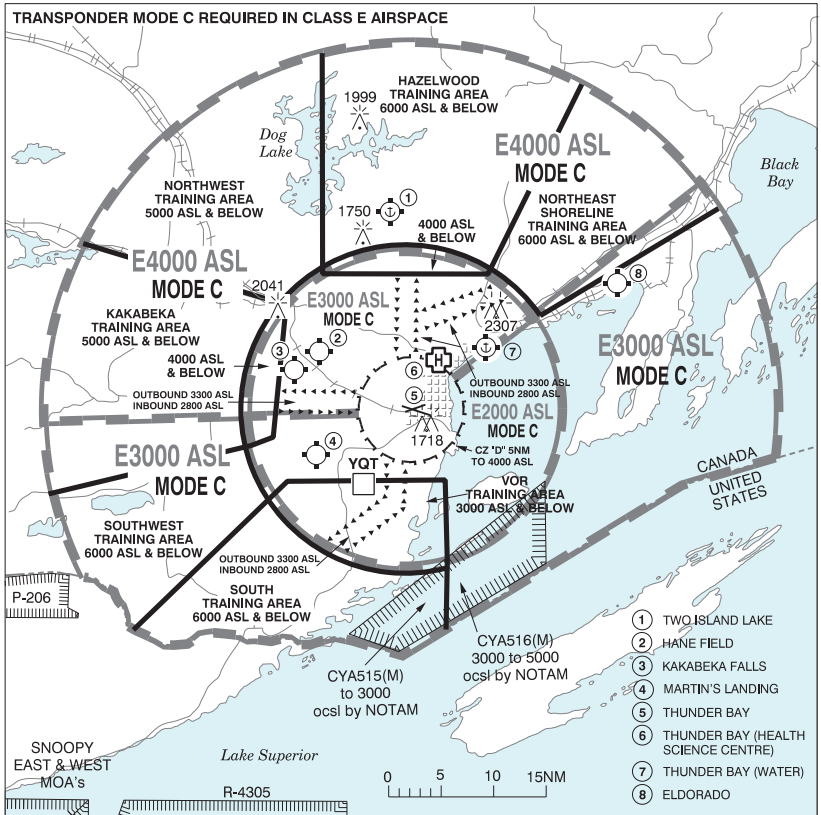
## AERODROME / FACILITY DIRECTORY

## THUNDER BAY ON (Cont'd)

CYQT

<b>RWY DATA</b>	Rwy 07(074°)/25(254°) 7318x148 ASPH Rwy 12(125°)/30(305°) 5297x150 ASPH RESA: 07/25 492' RESA: 12 321'; 30 492'
<b>RWY CERT</b>	Rwy 07 RVR 1200(1/4sm)/Rwy 25 RVR 1200(1/4sm) AGN IV Rwy 12 RVR 1200(1/4sm)/Rwy 30 RVR 1200(1/4sm) AGN IIIB
<b>TWY CERT</b>	Twy: A, C, D AGN IIIB
<b>TWY</b>	Twy E (NE of D) uncontrolled. Twy F extends for 225' then changes to apron VII. Private, uncontrolled beyond hold line. Twy H: Private.
<b>APRON</b>	Apron I rstd to sked commercial air carrier by stand assignment only fr TBIAAI. Acft shall not taxi between ATB and pushed back acft. All sked acft shall be directed into prkg posn by Marshalling Services. Taxiing acft to remain on taxilanes. Uncontrolled. Apron II: Itinerant acft prkg. Uncontrolled. Apron III: E entrance ltd to gnd tfc. Aprons III, IV, V, VII, VIII, IX, X, XI, XII, XIII, XV: Private and uncontrolled. Aprons VI: Uncontrolled.
<b>RCR</b>	Opr 1030-0500Z† Nov 15-Apr 15, O/T 2 hr PN, call out chg. CRFI PCN Win maint 1030-0500Z†.
<b>LIGHTING</b>	07-AN (TE HI) P2, 25-(TE HI) P2, 12-AD AS(TE ME) P2, 30-AD(non-std 1700') AS(TE ME) P2
<b>COMM</b>	
<b>RADIO</b>	118.1 PTC avbl (E) 04-11Z† (emerg only 807-473-4311)
<b>RCO</b>	London rdo 122.375 (FISE) 126.7 (bcst)
<b>ATIS</b>	128.8
<b>GND</b>	121.9 11-04Z†
<b>TWR</b>	118.1 (E) 11-04Z† (emerg only 807-473-5252) Admin/Supervisor 807-474-4245
<b>MF</b>	rdo 118.1 04-11Z† 5NM 4000 ASL (CAR 602.98)
<b>ARR</b>	Winnipeg Ctr 119.2
<b>DEP</b>	Winnipeg Ctr 119.2
<b>PAL</b>	Winnipeg Ctr 132.125
<b>NAV</b>	
<b>DME</b>	YQT 114.1 Ch 88 N48 15 14 W89 26 15 (1641')
<b>DME</b>	YTV 117.8 Ch 125 N48 22 11 W89 19 48 (676')
<b>ILS</b>	IQT 109.5 (Rwy 07) RVR
<b>PRO</b>	Rgt hand circuits Rwys 25 & 30 (CAR 602.96). See CAP for NOISE & NIGHT restrictions.  <b>ATS PPR REQUIREMENTS:</b> Ctc Winnipeg ACC 204-984-5979 for the following; - IFR tng and Photo Survey within Thunder Bay Class E Transponder Airspace - VFR tng conducting simulated holds and inst apch  <b>VFR TRAINING PROCEDURES</b> - See VTPC
<b>CAUTION</b>	Heli flood lgts 30 AGL N side of apron II. Lgtd obst 746 ASL 0.5NM NE Thld 25 (intxn Thunder Bay Express Way & Arthur street). Terrain rises abruptly to 1600 ASL 2NM SE of A/D. Extv fit tng within 35NM W & N of CYQT CZ to 6000 ASL. Extv bird and wildlife activity in vic of A/D. Railroad tracks SW of A/D in close proximity.

## THUNDER BAY VFR TERMINAL PROCEDURES CHART

**TRAINING AREA ARRIVALS**

- Join arrival route as close as possible to starting point.
- Fly the route on the depicted track and altitude until advised by Thunder Bay Tower.

**TRAINING AREA DEPARTURES**

- Join departure route as close as possible to starting point.
- Fly the route on the depicted track and altitude.

**CAUTION TO NON-PARTICIPATING PILOTS: FREQUENT USE OF DEPICTED VFR ROUTES**