
FLIGHT PLAN & SITE SURVEY

C 805-5116 ST ANNES RC AIR FORCE- 707-7995 ST ANNES
RD OKANAGAN

May 22, 2026



IMPORTANT NOTICE

Please ensure you have received all required authorizations prior to flight. This Site Survey was created using RPAS Wilco. The user accepts all responsibility for the accuracy of the information.

Terms & Conditions: rpaswilco.com/#tnc

Mission Information

C 805-5116 ST ANNES RC AIR FORCE- 707-7995 ST ANNES RD OKANAGAN

FLIGHT DETAILS

Reference No:	MAAC-805-5116
Project Name:	ST ANNES RC AIR FORCE
Pilot Name:	MAAC
Pilot Certificate:	
Mission Type:	VLOS
Flight Start:	May 22, 2026 07:50 PM
Flight End:	May 22, 2026 08:50 PM

LOCATION DETAILS

Flight Address:	707-7995 ST ANNES RD OKANAGAN
Latitude:	50° 23' 36.30" N (50.393)
Longitude:	119° 18' 54.40" W (-119.315)
Field Elevation:	1581 ft MSL
Altitude / Radius:	400 ft / 926 m (0.5 nm)
Classification:	UNCONTROLLED
FIR / Contact:	CZVR / 604-586-4500

REPORT CONTENTS

Site Survey • Obstacles (if available) • Nearby Aerodromes • Canadian Aviation Regulations • GFA • Aerodrome Supplements • METAR & TAF • NOTAMs • CFS





Flight Map & MODEL Details

MISSION LOCATION SURVEY

FLIGHT AREA MAP



MISSION LOCATION DETAILS

ROLE	LATITUDE	LONGITUDE
 MODEL	50° 23' 36.30" N 50.393	119° 18' 54.40" W -119.315
 Pilot		
 Payload Op.		
 Observer		

Airspace Classification

MISSION LOCATION SURVEY

AIRSPACE MAP



OVERLYING AIRSPACES

Class	Name	Floor	Ceiling
E	3.1.1-18 [TA]	1600AGL	18000MSL
E	3.1.2-47 [CAE]	8000AGL	18000MSL
E	Kelowna/Penticton, BC [TA]	700AGL	18000MSL
E	Kelowna/Penticton, BC [TSP]	6500MSL	12500MSL
E	Kelowna, BC [TSP]	3500MSL	12500MSL
E	North Kelowna, BC [TA]	700AGL	18000MSL
E	T646 Fixed RNAV Route	2200AGL	18000MSL
E	T713 Fixed RNAV Route	2200AGL	18000MSL
E	T799 Fixed RNAV Route	2200AGL	18000MSL

NEAREST AERODROMES & DISTANCE FROM OPERATION

WILDLIFE (CVW2 - WATERDROME - Reg)	Lat: 50.244	Long: -119.344	16.787KM	9.064NM	S
VERNON (CYVK - AERODROME/HELIPORT - Cert)	Lat: 50.246	Long: -119.332	16.453KM	8.884NM	S
SALMON ARM (CZAM - AERODROME - Reg)	Lat: 50.682	Long: -119.229	32.721KM	17.668NM	N

CANADA WATER AERODROME SUPPLEMENT

Effective 0901Z 19 March 2026 to 0901Z 18 February 2027

AERODROME/FACILITY DIRECTORY B279

VANDERHOOF WATER BC (Cont'd)

CVH3

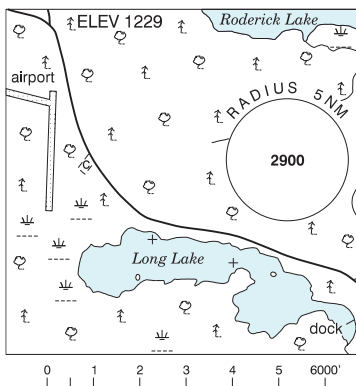
COMM	
ATF	ttc 122.8 5NM 5100 ASL
CAUTION	Land A/D 1.5NM NNW. Low water Sep/Oct. Watch for fisheries buoys. Ocsd debris mid Jul-mid Aug dur hi water release.

VERMETTE LANDING QC — See PETAWAWA / VERMETTE LANDING

VERMILION BAY ON

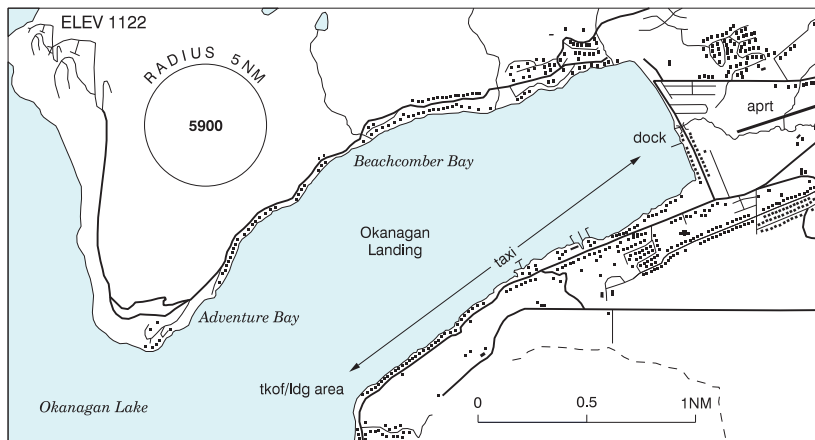
CKH6

REF	N49 53 W93 24 1.5NW 0° (2014) UTC-6(5) Elev 1229' A5007
OPR	Wilderness Air 807-227-5473 Reg
PF	B-1 C-2,3,4,5
FLT PLN	Pilots to open/close VFR flt plan with London rdo, FISE or by phone
FIG	London 866-WXBRIEF (Toll free within Canada) or 866-541-4104 (Toll free within Canada & USA)
SERVICES	
FUEL	100LL
OIL	All
S	5
A/D DATA	Open water mid May-end Oct. Depth 4', sheltered bay.
COMM	
ATF	ttc 130.7 5NM 4300 ASL
CAUTION	Land A/D 1.2NM NW.



VERNON / WILDLIFE BC

CVW2



REF	N50 14 37 W119 20 40 2.3SW 16°E (2016) UTC-8(7) Elev 1122' A5005
OPR	Robert Lord 250-859-9329 or 250-545-9108 Reg PN

CANADA WATER AERODROME SUPPLEMENT

Effective 0901Z 19 March 2026 to 0901Z 18 February 2027

B280 AERODROME/FACILITY DIRECTORY

VERNON / WILDLIFE BC (Cont'd)

CVW2

PF	C-1,2,3,4,5,6
FLT PLN FIC	Kamloops 866-WXBRIEF (Toll free within Canada) or 866-541-4101 (Toll free within Canada & USA)
SERVICES S	7 PPR
A/D DATA	Open water Apr-Nov. Depth 3-4', sandy beach.
COMM ATF	UNICOM ltd hrs O/T tfc 122.8 5NM 4100 ASL exc area within class D airspace.
NAV NDB	6K 302 (M) N50 21 00 W119 15 36 Pvt
PRO	Apch E side of Okanagan Landing at 1600 ASL, ldg S of yacht club, taxi to buoys (4). Reverse to tkof.
CAUTION	Vernon aprt 0.5NM NE of A/D. Remain at 1600 ASL til clear of Okanagan Landing. Extv parajumping in area. Glider activity ocsl to 12,500 ASL & ultralight activity.

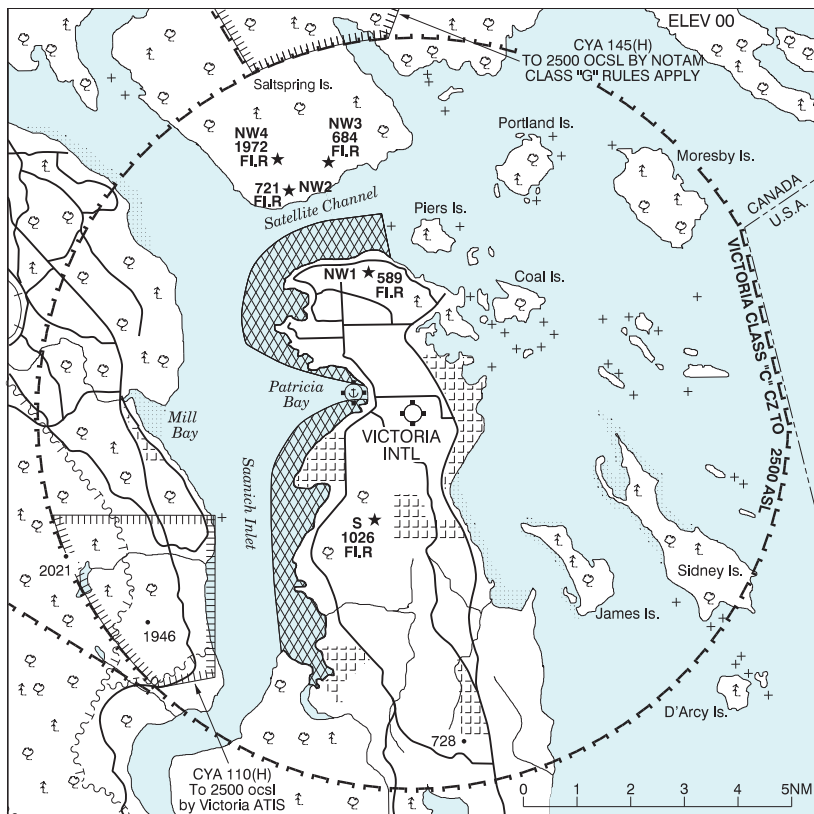
CANADA WATER AERODROME SUPPLEMENT

Effective 0901Z 19 March 2026 to 0901Z 18 February 2027

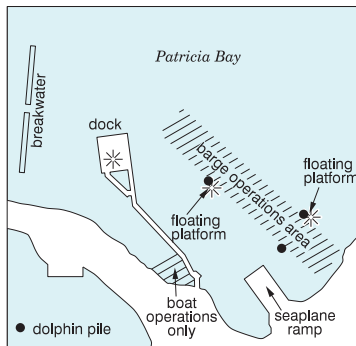
AERODROME/FACILITY DIRECTORY B281

VICTORIA AIRPORT BC

CAP5



REF	N48 39 13 W123 26 57 12NNW 17°E (2013) UTC-8(7) Elev 00' VTA A5004 LO2 T1
OPR	Victoria Intl Aprt Authority 250-953-7500/7511 Reg
PF	A-1,2,3,6 at adj land A/D C-4,5
CUST	AOE/15/SEAPL 888-226-7277 1630-0030Z†
FLT PLN	
FI	Kamloops 866-WXBRIEF (Toll free within Canada) or 866-541-4101 (Toll free within Canada & USA)
WX	METAR H24 (CYYJ) AUTO (See COMM) TAF H24, issue times: 00, 06, 12, 18Z



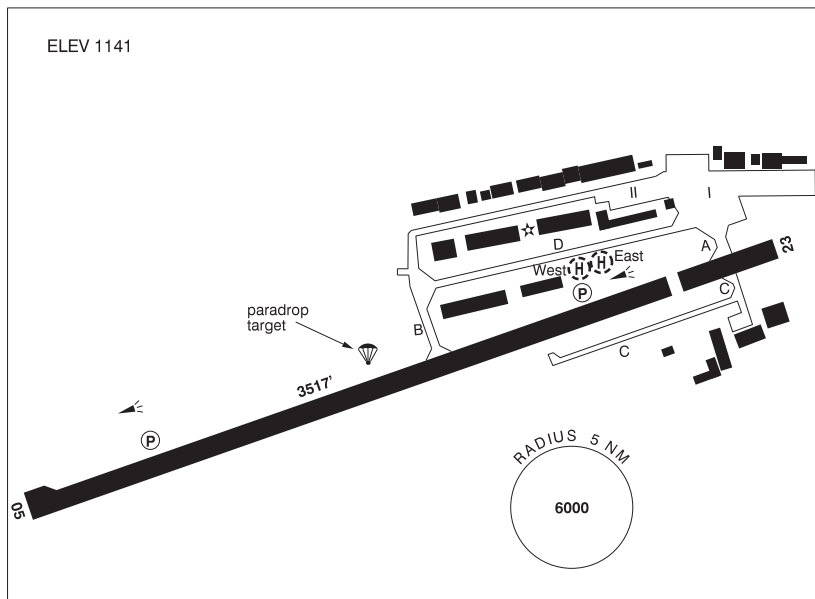
SERVICES	
FUEL	100LL 866-654-0646 PN
OIL	20W50
S	1,3 at adj land A/D, 5

BRITISH COLUMBIA

AERODROME / FACILITY DIRECTORY

VERNON BC

CYVK



REF	N50 14 45 W119 19 54 1.8SW 16°E (2013) UTC-8(7) Elev 1141' A5005 LO2 CAP
OPR	Corp of the City of Vernon 250-545-3035 1530-2400Z† Mon-Fri Cert
PF	B-1 C-2,3,4,5,6
FLT PLN	
 FIC	Kamloops 866-WXBRIEF (Toll free within Canada) or 866-541-4101 (Toll free within Canada & USA)
 WX	AUTO (see COMM) WxCam
SERVICES	
 FUEL	100LL (Self Serve, Visa, Mastercard, debit), JA, SP, Jet A call out chg may be levied after hrs 250-309-CYVK (2985)
 S	2,3,4,5
RWY DATA	Rwy 05(054°)/23(234°) 3517x75 ASPH Thld 23 displ 456' Rwy 23 down 0.31%
 RWY CERT	Rwy 05/23 AGN II
 TWY CERT	Twy C AGN I
 TWY	Twy C day use only.
 RCR	OPR 250-309-2985 Ltd win maint 16-24Z† Mon-Fri O/T chg may be levied.
HELI DATA	Parking Pads East & West: 25' x 25' CONC Max heli overall length 57.4' Heli must park hdg E/W. Additional itinerant heli prkg on grass E of heli pads.
LIGHTING	05-(TE ME) P1 3.5", 23-(TE ME) P1 4" ARCAL-122.8 type K.
COMM	
 MF	UNICOM ltd hrs O/T tfc 122.8 5NM 4100 ASL (CAR 602.98) Exc area within class "D" airspace.
 AUTO	123.175

BRITISH COLUMBIA

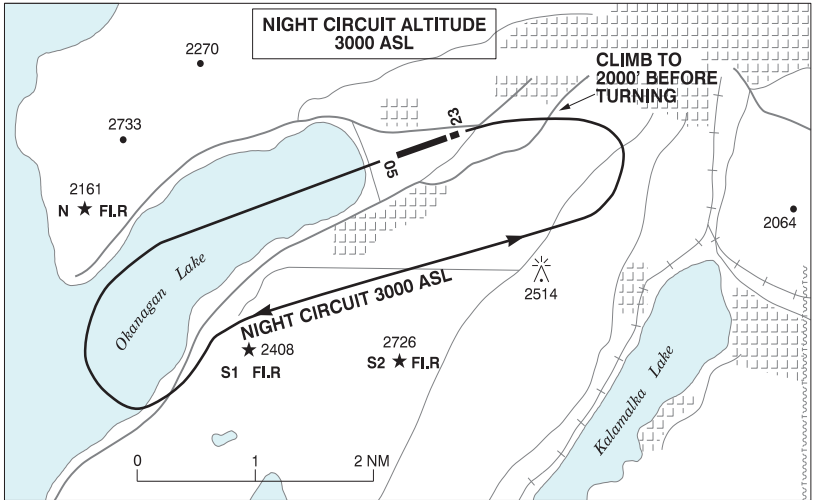
AERODROME / FACILITY DIRECTORY

VERNON BC (Cont'd)

CYVK

NAV	6K 302 (M) N50 21 00 W119 15 36 Pvt
NDB	
RESTRICTIONS	OPERATING RESTRICTIONS 1. Pursuant to CARS 602.96(3)(D), not certified for ngt ops unless S2 beacon is oprg.
PRO	Day: Circuit hgt 2400 ASL. Night: Rgt hand circuits rwy 05 (CAR 602.96). Circuit hgt 3000 ASL. Heli follow fixed-wing circuit procedures. Heli prkg pads accessed via rwy, hover taxi to pads.
CAUTION	Only pilots familiar with lcl terrain should use this aprt dur hrs of darkness. Marked fence parallels & lies within 200' of centreline of apch to Rwy 05. Extv parajumping in area. Glider activity ocsl to 12,500 ASL & ultra-light activity at A/D. Water A/D 0.5NM SW tfc at 1600 ASL. Daily radiosonde balloon launches fr N50 17 00 W119 16 00 (aprx 3.3NM NNE OF AD), with an ascent rate of 1000 ft/min btwn the hrs of 1115-1345Z & 2315-0145Z.

VERNON VFR TERMINAL PROCEDURES CHART - NIGHT CIRCUIT PROCEDURE



BRITISH COLUMBIA

AERODROME / FACILITY DIRECTORY

SALMON ARM BC

CZAM

REF	N50 40 57 W119 13 43 2SE 16°E (2013) UTC-8(7) Elev 1751' A5005 LO2 RCAP	
OPR	City of Salmon Arm 250-832-1000 O/T 250-524-0567 Reg Ldg fees may be levied	
PF	A-1,6 C-2,3,4,5	
FLT PLN	FIC Kamloops 866-WXBRIEF (Toll free within Canada) or 866-541-4101 (Toll free within Canada & USA) WX AUTO (see COMM) WxCam	
SERVICES	FUEL 100LL, JA-1, MG-3 250-832-1000 15-02Z (DT 13-04Z) OIL All S 1,2,3,4,5	
RWY DATA	Rwy 14(142°)/32(322°) 4261x75 ASPH Rwy 32 first 1420' down 1.9%	
RCR	Opr Ltd win maint	
LIGHTING	14-AS(TE ME) P1 3.5°, 32-(TE ME) P1 3.5° ARCAL-122.9 type K exc RILS (rwy 14) on high setting only.	
COMM	RCO Pacific rdo 122.375 (FISE) 126.7 (bcst) MF UNICOM ltd hrs O/T tfc 122.9 5NM 4700 ASL (CAR 602.98) AUTO 122.55	
RESTRIC-TIONS	OPERATING RESTRICTIONS 1. Pursuant to CARS 602.96(3)(D), not certified for ngt ops unless all hazard beacons are oprg.	
PRO	Circuit altitude 3000 ASL. Rgt hand circuits Rwy 32 (CAR 602.96). Night Ops: Follow circuit pro as depicted on VFR terminal ngt circuit pro chart. During parachuting activity over A/D Apr 1-Oct 31, overfly field over Thld 32.	
CAUTION	Only pilots familiar with local terrain should use this A/D dur hrs of darkness. Numerous P-lines in vic of A/D. Hang glider act sfc to 10,000 ASL within 15NM of A/D. Check for NOTAM.	

SALMON ARM VFR TERMINAL PROCEDURES CHART - NIGHT CIRCUIT PROCEDURE

