
FLIGHT PLAN & SITE SURVEY

C 760-5139 NORTH COAST RADIO CONTROL FLYERS
SOCIETY- ROOSEVELT SCHOOL BALL FIELD

May 22, 2026



IMPORTANT NOTICE

Please ensure you have received all required authorizations prior to flight. This Site Survey was created using RPAS Wilco. The user accepts all responsibility for the accuracy of the information.

Terms & Conditions: rpswilco.com/#tnc

Mission Information

C 760-5139 NORTH COAST RADIO CONTROL FLYERS SOCIETY- ROOSEVELT SCHOOL BALL FIELD

FLIGHT DETAILS

Reference No:	MAAC-760-5139
Project Name:	NORTH COAST RADIO CONTROL FLYERS SOCIETY
Pilot Name:	MAAC
Pilot Certificate:	
Mission Type:	VLOS
Flight Start:	May 22, 2026 07:51 PM
Flight End:	May 22, 2026 08:51 PM

LOCATION DETAILS

Flight Address:	ROOSEVELT SCHOOL BALL FIELD
Latitude:	54° 18' 19.82" N (54.306)
Longitude:	130° 19' 41.87" W (-130.328)
Field Elevation:	256 ft MSL
Altitude / Radius:	400 ft / 926 m (0.5 nm)
Classification:	UNCONTROLLED
FIR / Contact:	CZVR / 604-586-4500

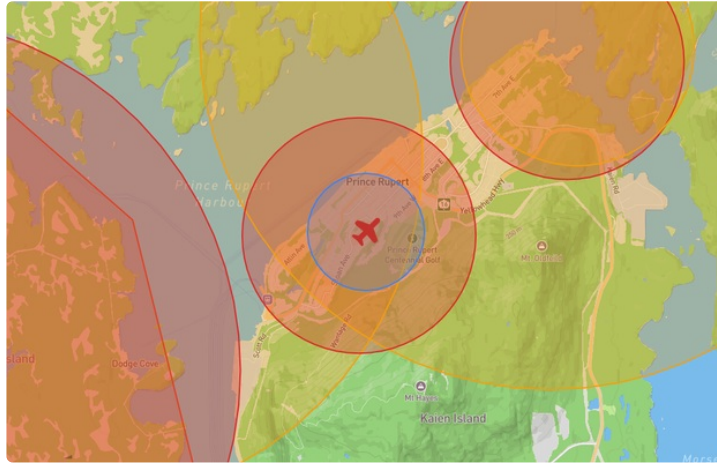
REPORT CONTENTS

Site Survey • Obstacles (if available) • Nearby Aerodromes • Canadian Aviation Regulations • GFA • Aerodrome Supplements • METAR & TAF • NOTAMs • CFS





Flight Map & MODEL Details

MISSION LOCATION SURVEY

FLIGHT AREA MAP



MISSION LOCATION DETAILS

ROLE	LATITUDE	LONGITUDE
 MODEL	54° 18' 19.82" N 54.306	130° 19' 41.87" W -130.328
 Pilot		
 Payload Op.		
 Observer		

Airspace Classification

MISSION LOCATION SURVEY

AIRSPACE MAP



OVERLYING AIRSPACES

Class	Name	Floor	Ceiling
E	Prince Rupert, BC [CAE]	2200AGL	18000MSL
E	Prince Rupert, BC [TA]	700AGL	18000MSL
E	Prince Rupert, BC b) [CZ]	700MSL	3000GND
E	R35 LF/MF Airways	2200AGL	18000MSL
E	Prince Rupert, BC a) [CZ]	SFC	700MSL
E	A10 LF/MF Airways	2200AGL	18000MSL
E	T785 Fixed RNAV Route	2200AGL	18000MSL
E	T664 Fixed RNAV Route	2200AGL	18000MSL

NEAREST AERODROMES & DISTANCE FROM OPERATION

SEAL COVE (CZSW - WATERDROME - Reg)	Lat: 54.333	Long: -130.283	4.252KM	2.296NM	NE
DIGBY ISLAND (CAN6 - WATERDROME - Reg)	Lat: 54.317	Long: -130.4	4.814KM	2.599NM	W
PRINCE RUPERT (HOSPITAL) (CBR8 - HELIPORT - Cert)	Lat: 54.305	Long: -130.33	0.124KM	0.067NM	SW

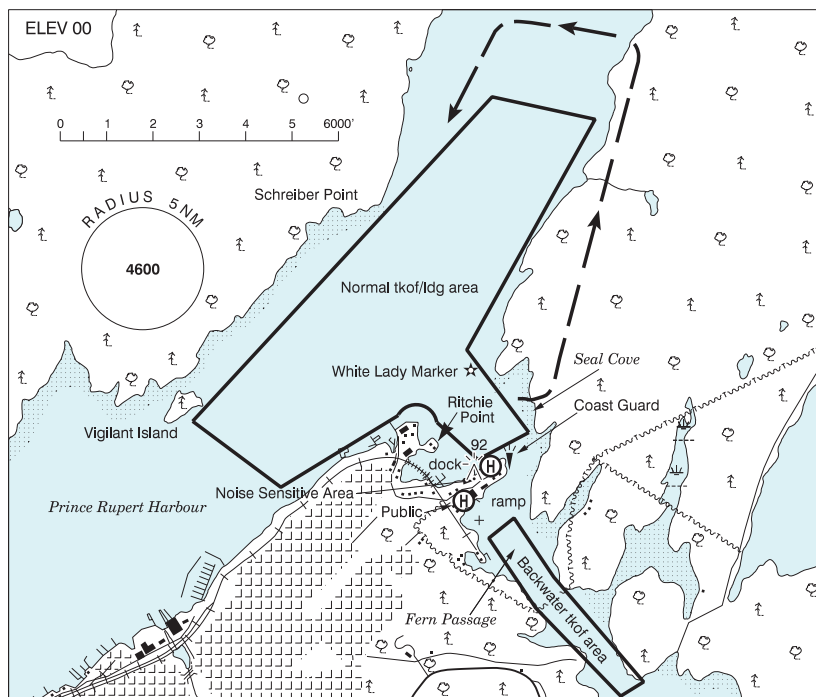
CANADA WATER AERODROME SUPPLEMENT

Effective 0901Z 19 March 2026 to 0901Z 18 February 2027

B196 AERODROME/FACILITY DIRECTORY

PRINCE RUPERT / SEAL COVE BC

CZSW



REF	N54 20 W130 17 Adj NE 20°E (2012) UTC-8(7) Elev 00' A5013
OPR	Seal Cove Airport Society 250-624-2321 Reg
PF	A-1,3 C-2,4,5,6
CUST	AOE/15 888-226-7277
FLT PLN	FIG Kamloops 866-WXBRIEF (Toll free within Canada) or 866-541-4101 (Toll free within Canada & USA)
SERVICES	Avbl May-Sep 15-04Z†. Oct-Apr daylight hrs only. Callout chgs may apply. After hrs svcs call 250-624-1737.
FUEL	100LL
S	1,2,3,4,5
A/D DATA	Tidal range 26', current 2-3 kt. Floats & ramp. Win: Ocs1 3' swells & chop. Sum: Frequent glassy water.
DOCKS	Mooring fees.
COMM	RCO Pacific rdo 123.275 (FISE) 126.7 (bcst) MF tfc 122.5 irregular shape see Prince Rupert VTPC 3100 ASL (CAR 602.98)
NAV	NDB PR 218 (M) N54 15 48 W130 25 26

CANADA WATER AERODROME SUPPLEMENT

Effective 0901Z 19 March 2026 to 0901Z 18 February 2027

AERODROME/FACILITY DIRECTORY B197

PRINCE RUPERT / SEAL COVE BC (Cont'd)

CZSW

PRO	See Prince Rupert VTPC. ARRIVAL: Rpt by inbd VFR checkpoint on tfc freq and advs routing and destn. Remain on tfc freq until landed. DEPARTURE: Advs obd rte and remain on tfc freq until clear of inbd VFR checkpoints.
CAUTION	Prince Rupert CZ adj. See VTPC. Extv air tfc to/fr Port Simpson via Tuck Inlet. Log-booming - debris in area. Extv boat tfc in Fern Passage.

PUMPKIN BAY ON — See ORILLIA / PUMPKIN BAY

QUAMICHAN LAKE (RAVEN FIELD) BC

CRF6

REF	N48 48 30 W123 39 00 2.9NNE 17°E (2014) UTC-8(7) Elev 100' VTA A5004	
OPR	John F Howroyd 250-889-5770 Reg PPR	
PF	B-1 C-2,3,4,5,6	
FLT PLN	FIG Kamloops 866-WXBRIEF (Toll free within Canada) or 866-541-4101 (Toll free within Canada & USA)	
A/D DATA	Virtually ice free, non-tidal, max depth 24' crushed rock, depth at dock 5', 4 moorings 2x20' floats and gangway.	
COMM	ATF tfc 122.8 2NM 3200 ASL	
PRO	Avoid NE dep for noise abatement	

CANADA WATER AERODROME SUPPLEMENT

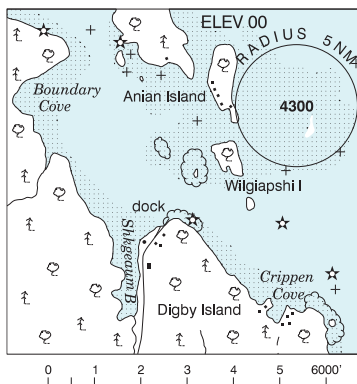
Effective 0901Z 19 March 2026 to 0901Z 18 February 2027

AERODROME/FACILITY DIRECTORY B195

PRINCE RUPERT / DIGBY ISLAND BC

CAN6

REF	N54 19 W130 24 3W 19°E (2013) UTC-8(7) Elev 00' A5013
OPR	Prince Rupert Aprt Authority 250-624-6274 Reg
PF	B-1, 3(ltd hrs) C-2,3,4,5,6 on Kaien Island
FLT PLN	FC Kamloops 866-WXBRIEF (Toll free within Canada) or 866-541-4101 (Toll free within Canada & USA)
SERVICES	S 7 1600-0345Z†
A/D DATA	Water A/D within Prince Rupert CZ. Tidal range 26'. Tidal current 3-7 kts.
COMM	RCO Pacific rdo 123.275 (FISE) 126.7 (bcst) MF tfc 122.5 irregular shape see Prince Rupert VTPC 3100 ASL (CAR 602.98)
NAV	NDB PRINCE RUPERT PR 218 (M) N54 15 48 W130 25 26
PRO	See Prince Rupert VTPC. ARRIVAL: Rpt by inbd VFR checkpoint on tfc freq and advs routing and destn. Remain on tfc freq until landed. DEPARTURE: Advs obd rte and remain on tfc freq until clear of inbd VFR checkpoints.
CAUTION	Logs & deadheads hazardous. Extv boat tfc in area. Land A/D 2.4NM SW.



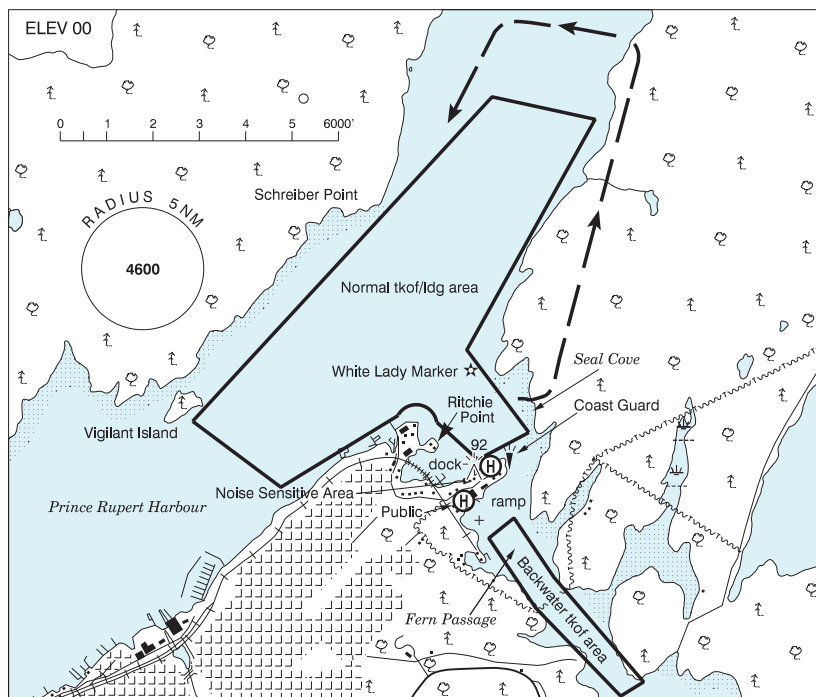
CANADA WATER AERODROME SUPPLEMENT

Effective 0901Z 19 March 2026 to 0901Z 18 February 2027

B196 AERODROME/FACILITY DIRECTORY

PRINCE RUPERT / SEAL COVE BC

CZSW



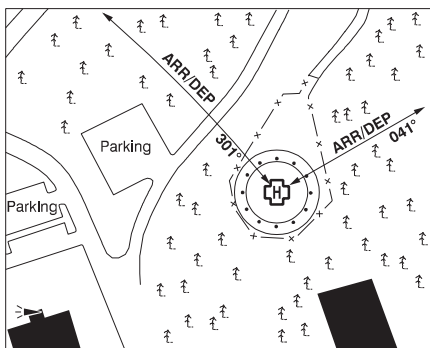
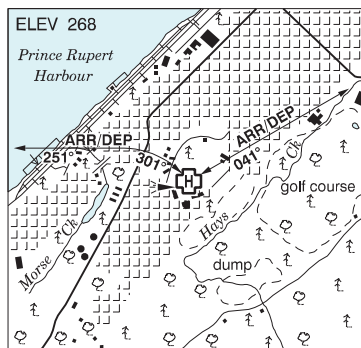
REF	N54 20 W130 17 Adj NE 20°E (2012) UTC-8(7) Elev 00' A5013
OPR	Seal Cove Airport Society 250-624-2321 Reg
PF	A-1,3 C-2,4,5,6
CUST	AOE/15 888-226-7277
FLT PLN	FIG Kamloops 866-WXBRIEF (Toll free within Canada) or 866-541-4101 (Toll free within Canada & USA)
SERVICES	Avbl May-Sep 15-04Z†. Oct-Apr daylight hrs only. Callout chgs may apply. After hrs svcs call 250-624-1737.
FUEL	100LL
S	1,2,3,4,5
A/D DATA	Tidal range 26', current 2-3 kt. Floats & ramp. Win: Ocs1 3' swells & chop. Sum: Frequent glassy water.
DOCKS	Mooring fees.
COMM	RCO Pacific rdo 123.275 (FISE) 126.7 (bcst) MF tfc 122.5 irregular shape see Prince Rupert VTPC 3100 ASL (CAR 602.98)
NAV	NDB PR 218 (M) N54 15 48 W130 25 26

BRITISH COLUMBIA

AERODROME / FACILITY DIRECTORY

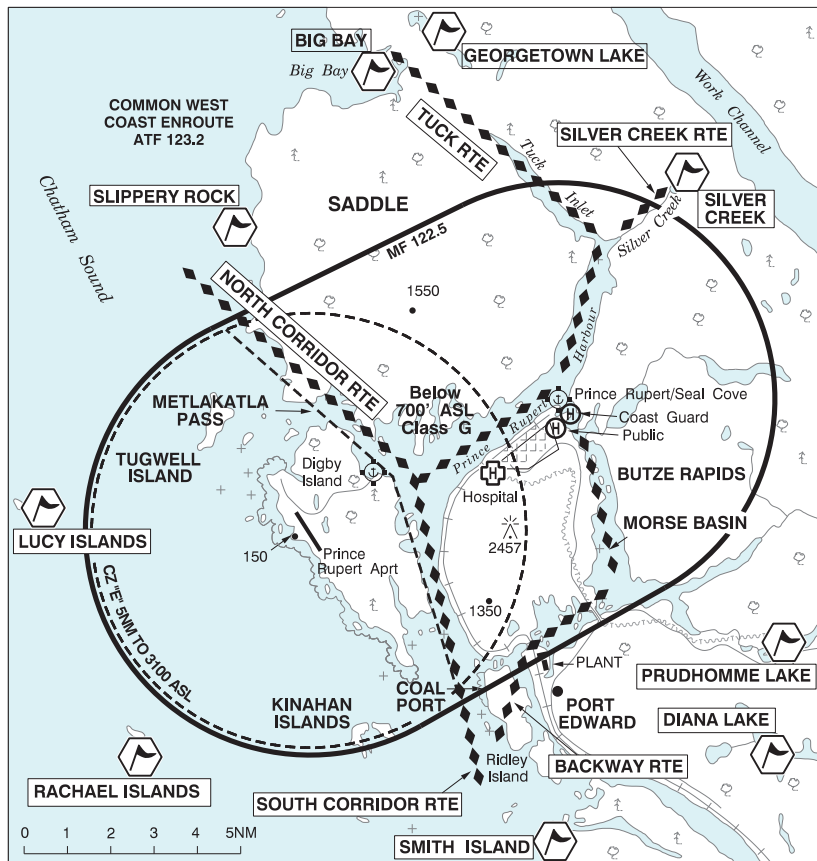
PRINCE RUPERT (HOSP) BC (Heli)

CBR8



REF	N54 18 19 W130 19 48 Adj 19°E (2013) UTC-8(7) Elev 268' A5013
OPR	Northern Health Authority 250-622-6262 Cert PPR
PF	B-1,2,4, C-3,5,6
FLT PLN	
FIG	Kamloops 866-WXBRIEF (Toll free within Canada) or 866-541-4101 (Toll free within Canada & USA)
HELI DATA	FATO/TLOF 86' dia CONC/ASPH Safety Area 115' dia Max heli overall length 57.4' (CAR 602.96)
LIGHTING	RW(LO) green ARCAL-123.2 type J
COMM	
RCO	Pacific rdo 123.275 (FISE) 126.7 (bcst)
MF	tfc 122.5 irregular shape see Prince Rupert VTPC 3100 ASL (CAR 602.98)
PRO	Arr/dep 301° to 251° fr heli and 041° fr heli. All slope 8% (H3) day/night use. (CAR 602.96). See Prince Rupert VTPC. ARRIVAL: Rpt by inbd VFR checkpoint on tfc freq and advs routing and destrn. Remain on tfc freq until landed. DEPARTURE: Advs obd rte and remain on tfc freq until clear of inbd VFR checkpoints.
CAUTION	Trees to 100 AGL both sides of 045° flight path.

PRINCE RUPERT VFR TERMINAL PROCEDURES CHART



NAME	IDENT	LAT/LONG
BIG BAY	VBBY	N54° 27' 24" W130° 23' 30"
DIANA LAKE	VCDIA	N54° 12' 12" W130° 08' 36"
GEORGETOWN LAKE	VCGTN	N54° 28' 30" W130° 21' 48"
LUCY ISLANDS	VLCY	N54° 18' 24" W130° 37' 30"
PRUDHOMME LAKE	VCPDH	N54° 14' 42" W130° 07' 54"
RACHAEL ISLANDS	VCRCL	N54° 12' 18" W130° 33' 30"
SILVER CREEK	VCSLV	N54° 24' 54" W130° 12' 00"
SLIPPERY ROCK	VCSLP	N54° 23' 54" W130° 29' 48"
SMITH ISLAND	VCSMI	N54° 09' 42" W130° 17' 18"