
FLIGHT PLAN & SITE SURVEY

C 58-5225 PRINCE GEORGE AEROMODELERS-
GIESBRECHT FIELD

May 22, 2026



IMPORTANT NOTICE

Please ensure you have received all required authorizations prior to flight. This Site Survey was created using RPAS Wilco. The user accepts all responsibility for the accuracy of the information.

Terms & Conditions: rpswilco.com/#tnc

Mission Information

C 58-5225 PRINCE GEORGE AEROMODELERS- GIESBRECHT FIELD

FLIGHT DETAILS

Reference No:	MAAC-58-5225
Project Name:	PRINCE GEORGE AEROMODELERS
Pilot Name:	MAAC
Pilot Certificate:	
Mission Type:	VLOS
Flight Start:	May 22, 2026 07:53 PM
Flight End:	May 22, 2026 08:53 PM

LOCATION DETAILS

Flight Address:	GIESBRECHT FIELD
Latitude:	53° 47' 11.69" N (53.787)
Longitude:	122° 50' 57.84" W (-122.849)
Field Elevation:	2300 ft MSL
Altitude / Radius:	400 ft / 926 m (0.5 nm)
Classification:	UNCONTROLLED
FIR / Contact:	CZVR / 604-586-4500

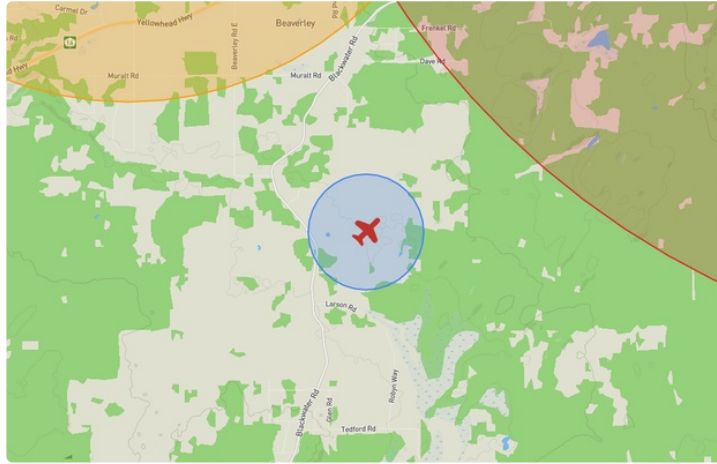
REPORT CONTENTS

Site Survey • Obstacles (if available) • Nearby Aerodromes • Canadian Aviation Regulations • GFA • Aerodrome Supplements • METAR & TAF • NOTAMs • CFS





Flight Map & MODEL Details

MISSION LOCATION SURVEY

FLIGHT AREA MAP



MISSION LOCATION DETAILS

ROLE	LATITUDE	LONGITUDE
 MODEL	53° 47' 11.69" N 53.787	122° 50' 57.84" W -122.849
 Pilot		
 Payload Op.		
 Observer		

Airspace Classification

MISSION LOCATION SURVEY

AIRSPACE MAP



OVERLYING AIRSPACES

Class	Name	Floor	Ceiling
E	Prince George, BC a) [CAE]	5200AGL	18000MSL
E	Prince George, BC a) [TSP]	5200AGL	12500MSL
E	V301 VHF/UHF Airway	2200AGL	18000MSL
E	V321-1 VHF/UHF Airway	2200AGL	18000MSL
E	Prince George, BC [TA]	700AGL	18000MSL
E	V298 VHF/UHF Airway	2200AGL	18000MSL
E	V325-1 VHF/UHF Airway	2200AGL	18000MSL
D	Prince George, BC [CZ]	SFC	5500MSL
B	Prince George, BC c) [CAE]	12500MSL	18000MSL
F	CYR 6.1.0-10 PRINCE GEORGE REGIONAL CORRECTIONAL CENTRE, BC	SFC	3100MSL

NEAREST AERODROMES & DISTANCE FROM OPERATION

BEAVERLEY (CBA8 - AERODROME - Reg)	Lat: 53.856	Long: -122.907	8.566KM	4.625NM	NW
PRINCE GEORGE (CYXS - AERODROME - Cert)	Lat: 53.884	Long: -122.678	15.63KM	8.44NM	NE
VANDERHOOF WATER (CVH3 - WATERDROME - Reg)	Lat: 54.02	Long: -123.998	79.581KM	42.97NM	W

BRITISH COLUMBIA

AERODROME / FACILITY DIRECTORY

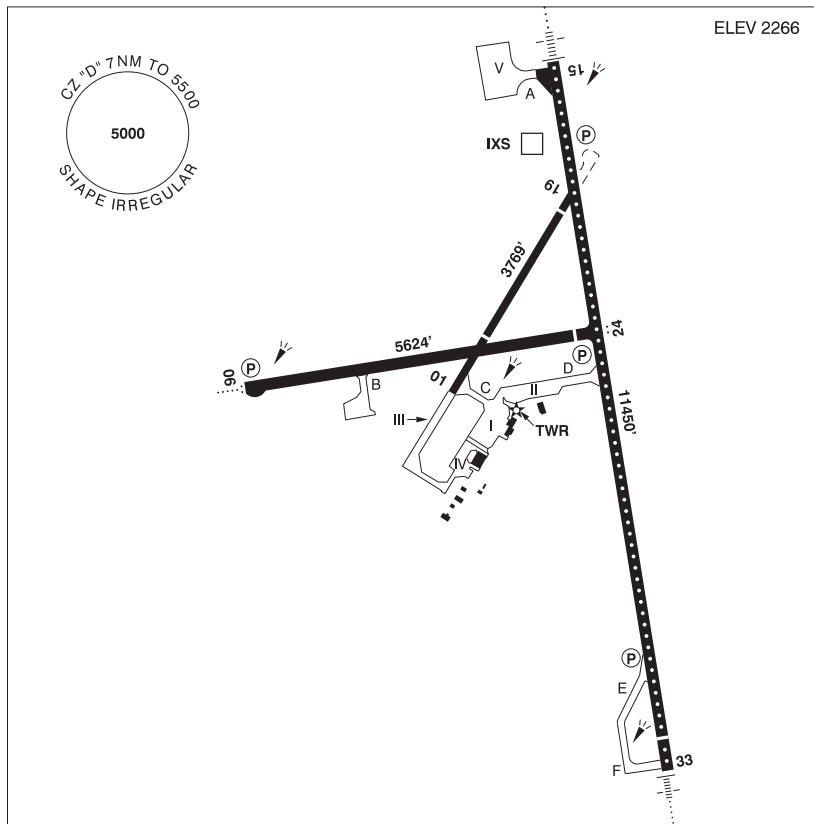
BEAVERLEY BC

CBA8

REF	N53 51 20 W122 54 27 2.5N 19°E (2012) UTC-8(7) Elev 2420' A5014	
OPR	Cyr's Recreational Avn Park 250-964-8228 or 250-617-8228 Reg	
PF	B-1 C-2 D-3,4,5,6	
FLT PLN	FIC Kamloops 866-WXBRIEF (Toll free within Canada) or 866-541-4101 (Toll free within Canada & USA)	
SERVICES	S 2,4,5	
RWY DATA	Rwy 07(071°)/25(251°) 2461x50 gravel RCR Opr Jun-Sep No win maint. Rwy soft in spring & fall.	
COMM	ATF tfc 122.8 2NM 4000 ASL	
CAUTION	Parajumping in area to 12,500 ASL by NOTAM. 80' trees 100' S rwy. Wildlife ocsl on rwy.	

PRINCE GEORGE BC

CYXS



REF	N53 53 03 W122 40 39 2.8SE 18°E (2014) UTC-8(7) Elev 2266' A5014 LO1 HI3 CAP
OPR	Prince George Airport Authority 250-963-2400 Cert
PF	A-1,2,3,6 C-4,5
CUST	AOE/30 (120 with staged off-loading) 888-226-7277 1630-0030Z†
FLT PLN	<p>FIG Kamloops 866-WXBRIEF (Toll free within Canada) or 866-541-4101 (Toll free within Canada & USA)</p> <p>WX METAR AUTO H24 (see COMM). TAF H24, issue times: 01, 07, 13, 19Z. WxCam</p>
SERVICES	<p>FUEL 100LL, JA-1 (FSII avbl), F-34, JB, HPR</p> <p>OIL All</p> <p>S 1,2,3,4</p> <p>ARFF DESIGNATED CAT 7 1400-0730Z† sked pax flt only, O/T call out chg, 2 hr PN, apr clsd to acct 20 seats & abv, exc for diversions or as an altn A/D without PPR.</p> <p>PVT ADV Jetmark 129.4 250-961-8124</p> <p>MIL CON Executive Aviation 250-961-8124</p>

BRITISH COLUMBIA

AERODROME / FACILITY DIRECTORY

PRINCE GEORGE BC (Cont'd)

CYXS

RWY DATA	Rwy 15(153°)/33(333°) 11450x150 ASPH Thld 33 displ 500' Rwy 15 down 0.3% Rwy 06(063°)/24(243°) 5624x150 ASPH Thld 24 displ 401' Rwy 24 up 0.87% Rwy 01(013°)/19(193°) 3769x75 ASPH Thld 01 displ 984'. Thld 19 displ 373'
RWY CERT	Rwy 15 RVR 1200(1/4sm)/Rwy 33 RVR 1200(1/4sm) AGN V Rwy 06/24 AGN IIIB Rwy 01/19 AGN III
TWY CERT	Twy: B AGN IIIB Twy: C, D AGN IV
RCR	Opr 1300-0730Z†. Rwy 01/19 rstd to 12,500 lbs for ldg & tkof day only. Win maint 1300-0730Z† O/T 2hr PN cost recovery. CRFI, PCN.
LIGHTING	06-AO(TE ME) P2, 24-AS(TE ME) P2, 15-AN(TE HI CL) P3, 33-AN(TE HI CL) P2 PAPI limitation/restriction. PAPI Rwy 24 to be used only within 5NM of thld ARCAL-118.3 type K when twr clsd Rwys 01/19 lit as twy
COMM	
RCO	Williams Lake rdo 118.3 (RAAS) 05-14Z† Pacific rdo 123.55 (FISE) 126.7 (bcst)
ATIS	128.725 14-05Z†
GND	121.9 14-05Z†
TWR	118.3 (V) 14 -05Z† (emerg only 250-963-9177)
MF	Williams Lake rdo 118.3 05-14Z† CZ shape irregular 7NM 5500 ASL (CAR 602.98) (emerg only 250-989-4415)
PAL	Vancouver Ctr 133.8
AWOS	128.725 05-14Z†
NAV	
VOR/DME	YXS 112.3 Ch 70 N53 53 39 W122 27 20 (4076')
DME	IXS 109.5 Ch 32 N53 53 46 W122 40 19 (2260')
ILS	IXS 109.5 (Rwy 15) RVR
PRO	Rgt hand circuits Rwys 19, 24 & 33 (CAR 602.96).
CAUTION	Tall vehicles crossing 910' N thld Rwy 15. Extv bird activity dur spring & fall. Parajumping activity vic Beaverley A/D 8NM SW to 12,500 ASL by NOTAM, monitor 122.1. Radiosonde balloon launches with an ascent rate of 1000 ft/min daily between the hours of 1115-1345Z & 2315-0145Z. Hi terrain reduces operational length of Rwy 24 PAPI.

CANADA WATER AERODROME SUPPLEMENT

Effective 0901Z 19 March 2026 to 0901Z 18 February 2027

B278 AERODROME/FACILITY DIRECTORY

VANCOUVER INTL BC (Cont'd)

CAM9

PRO	<p>AIRSPACE: See VTA chart for VFR rtes & pro. Procedures for crossing the southern Strait of Georgia within Tml Class C airspace refer to VTPC. Transponder mode C rqr'd in class C airspace and CZ. CARS Part VII operators must ensure routes flown at night meet minimum altitude requirements for commercial operations.</p> <p>ARR/DEP: See Vancouver Intl CAM9 VTPC. Downwind fit alt not below 500' ASL over populated area to the S. Dep rstd til 0630 hr lcl O/T PPR from YVR Ops 604-207-7022.</p> <p>NOISE ABATEMENT: Consistent with safe acft ops, the following are recommended operational proc: 1. Tkof Westbound and ldg Eastbound are preferred when wind and water conds permit. 2. Use low RPM reduced noise tkof when able. 3. Avoid dep rte that fly over the City of Richmond, whenever possible. 4. Avoid using "reverse thrust" after ldg to slow the acft. 5. Maintain 500 ASL when flying the Westminster Hwy downwind rte.</p> <p>ATS REQUIREMENTS: - All VFR acft arriving, departing or transiting the Vancouver or Victoria Tower Class C or D airspace require a transponder code. - All acft departing Vancouver or Victoria Intl (including Water Aerodrome) call Kamloops FIC at 866-992-7433 (866-WXBRIEF) or 866-541-4101 for code assignment at least 30 min prior to flight or file a VFR Flight Plan/Flight Itinerary. - All acft arriving Vancouver, Victoria Intl (including Water Aerodrome) or transiting Vancouver or Victoria Control Zones obtain a code from one of the following ATS units: Vancouver Harbour, Nanaimo, Victoria Harbour, Boundary Bay, Langley, Abbotsford or Pitt Meadows, Pacific Radio 123.15, or call Kamloops FIC at 866-992-7433 (866-WXBRIEF) or 866-541-4101.</p>
CAUTION	Low lvl overflights of heli arr/dep adj land A/D. Rough water associated with strong E or W winds (1-3' swells). Debris in river. Twr cranes S side of Fraser River adj Olympic Oval.

VANDERHOOF WATER BC

CVH3

REF	N54 01 13 W123 59 53 Adj NE 17°E° (2019) UTC-8(7) Elev 2050' aprx A5014	<p>The map shows the Nechako River flowing through a grid. A 5 NM radius circle is centered on a point labeled '4200'. The river has several 'docks' marked along its banks. Elevation markers include 'ELEV 2050 APRX' and 'RADIUS 5 NM'. A scale bar at the bottom indicates distances from 0 to 6000 feet.</p>
OPR	Vanderhoof Flying Club 250-567-4805/8724 or 250-614-3569 Reg	
PF	C-1,2,3,4,5 D-6	
FLT PLN	FIC Kamloops 866-WXBRIEF (Toll free within Canada) or 866-541-4101 (Toll free within Canada & USA)	
SERVICES	FUEL 100LL (at land A/D), MG-1, MG-4 not avbl on site. PVT ADV Guardian Aerospace 250-567-2655 15-24Z± O/T 250-570-2670/2671 PN for float planes.	
A/D DATA	Open water May 1 to Oct 30. Mud & gravel bottom. DOCKS 3 docks on private land. Dock space not assured.	

CANADA WATER AERODROME SUPPLEMENT

Effective 0901Z 19 March 2026 to 0901Z 18 February 2027

AERODROME/FACILITY DIRECTORY B279

VANDERHOOF WATER BC (Cont'd)

CVH3

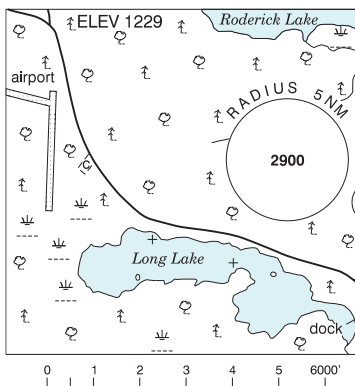
COMM	
ATF	ttc 122.8 5NM 5100 ASL
CAUTION	Land A/D 1.5NM NNW. Low water Sep/Oct. Watch for fisheries buoys. Ocsd debris mid Jul-mid Aug dur hi water release.

VERMETTE LANDING QC — See PETAWAWA / VERMETTE LANDING

VERMILION BAY ON

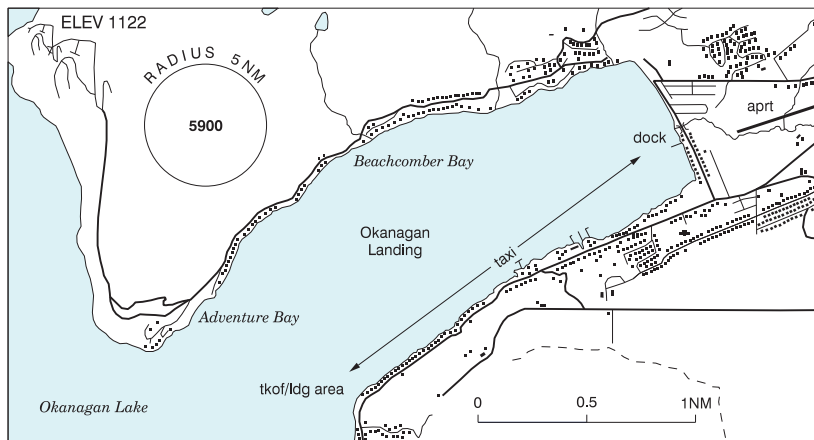
CKH6

REF	N49 53 W93 24 1.5NW 0° (2014) UTC-6(5) Elev 1229' A5007
OPR	Wilderness Air 807-227-5473 Reg
PF	B-1 C-2,3,4,5
FLT PLN	Pilots to open/close VFR flt plan with London rdo, FISE or by phone
FIG	London 866-WXBRIEF (Toll free within Canada) or 866-541-4104 (Toll free within Canada & USA)
SERVICES	
FUEL	100LL
OIL	All
S	5
A/D DATA	Open water mid May-end Oct. Depth 4', sheltered bay.
COMM	
ATF	ttc 130.7 5NM 4300 ASL
CAUTION	Land A/D 1.2NM NW.



VERNON / WILDLIFE BC

CVW2



REF	N50 14 37 W119 20 40 2.3SW 16°E (2016) UTC-8(7) Elev 1122' A5005
OPR	Robert Lord 250-859-9329 or 250-545-9108 Reg PN

VANDERHOOF VFR TERMINAL PROCEDURES CHART

