
FLIGHT PLAN & SITE SURVEY

A 853-5261 SOUTHERN ALBERTA CONTROL LINE
ASSOCIATION- EAST / SHEPARD PLAYFIELD (ESH 906)

May 22, 2026



IMPORTANT NOTICE

Please ensure you have received all required authorizations prior to flight. This Site Survey was created using RPAS Wilco. The user accepts all responsibility for the accuracy of the information.

Terms & Conditions: rpswilco.com/#tnc

Mission Information

A 853-5261 SOUTHERN ALBERTA CONTROL LINE ASSOCIATION- EAST / SHEPARD PLAYFIELD (ESH 906)

FLIGHT DETAILS

Reference No:	MAAC-853-5261
Project Name:	SOUTHERN ALBERTA CONTROL LINE ASSOCIATION
Pilot Name:	MAAC
Pilot Certificate:	
Mission Type:	VLOS
Flight Start:	May 22, 2026 08:54 PM
Flight End:	May 22, 2026 09:54 PM

LOCATION DETAILS

Flight Address:	EAST / SHEPARD PLAYFIELD (ESH 906)
Latitude:	50° 56' 44.60" N (50.946)
Longitude:	113° 58' 15.10" W (-113.971)
Field Elevation:	3389 ft MSL
Altitude / Radius:	400 ft / 926 m (0.5 nm)
Classification:	UNCONTROLLED
FIR / Contact:	CZEG / 780-890-8397

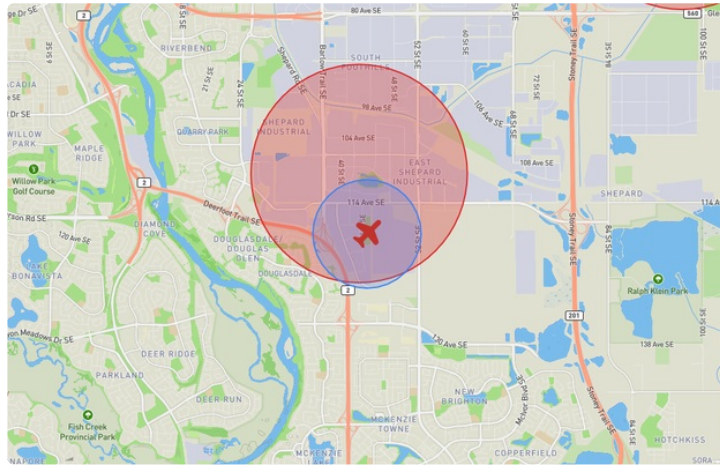
REPORT CONTENTS

Site Survey • Obstacles (if available) • Nearby Aerodromes • Canadian Aviation Regulations • GFA • Aerodrome Supplements • METAR & TAF • NOTAMs • CFS





Flight Map & MODEL Details

MISSION LOCATION SURVEY

FLIGHT AREA MAP



MISSION LOCATION DETAILS

ROLE	LATITUDE	LONGITUDE
 MODEL	50° 56' 44.60" N 50.946	113° 58' 15.10" W -113.971
 Pilot		
 Payload Op.		
 Observer		

Airspace Classification

MISSION LOCATION SURVEY

AIRSPACE MAP



OVERLYING AIRSPACES

Class	Name	Floor	Ceiling
E	Calgary, AB a) [CAE]	5800MSL	18000MSL
E	V112 VHF/UHF Airway	2200AGL	18000MSL
C	Calgary, AB d) [TCA]	4800AGL	18000MSL
C	Calgary, AB c) [TCA]	5500AGL	8000MSL
B	Calgary, AB a) [TCA]	12500MSL	18000MSL
C	Calgary, AB b) [TCA]	8000MSL	12500MSL
E	V306 VHF/UHF Airway	2200AGL	18000MSL
C	Calgary Intl, AB [CZ]	SFC	3000GND
E	T727 Fixed RNAV Route	2200AGL	18000MSL

NEAREST AERODROMES & DISTANCE FROM OPERATION

CALGARY (EASTLAKE) (CEL9 - HELIPORT - Cert)	Lat: 50.955	Long: -113.973	1.04KM	0.562NM	N
SOUTH HEALTH CAMPUS (HOSP) (CSH3 - HELIPORT - Cert)	Lat: 50.883	Long: -113.952	7.154KM	3.863NM	S
BLUE-CON (CBC6 - HELIPORT - Cert)	Lat: 50.997	Long: -113.894	7.841KM	4.234NM	NE

ALBERTA

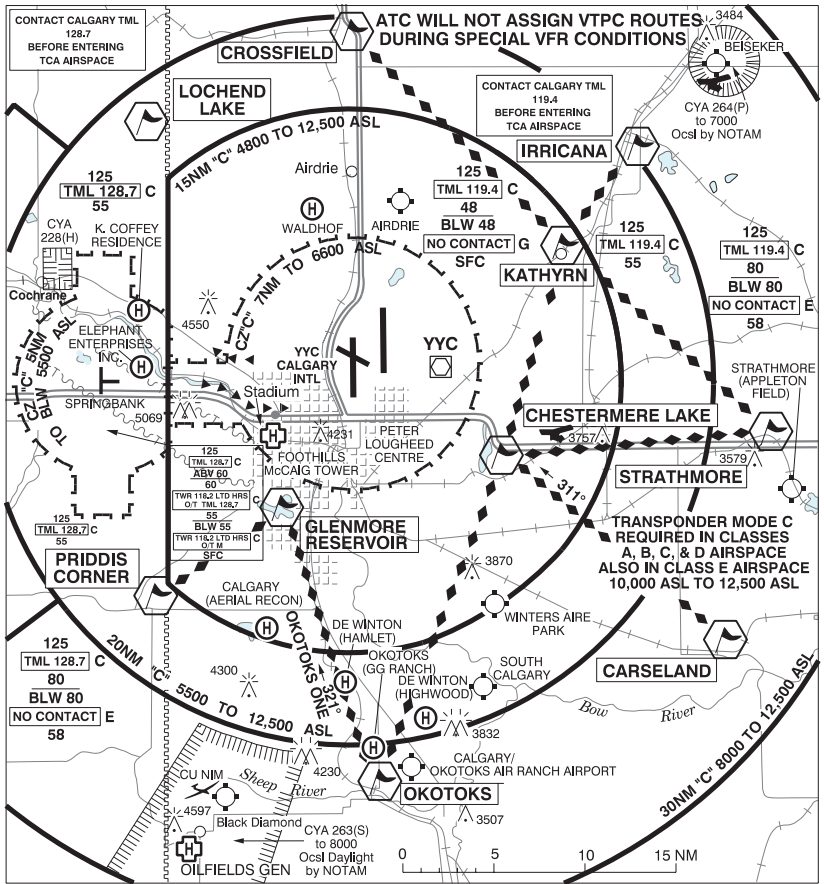
AERODROME / FACILITY DIRECTORY

CALGARY (EASTLAKE) AB (Heli)

CEL9

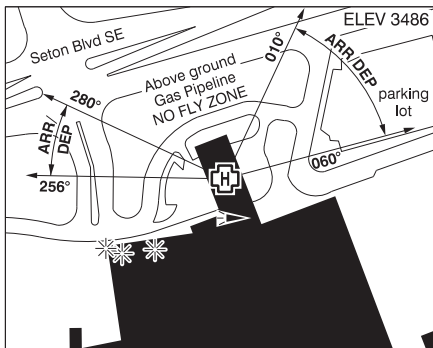
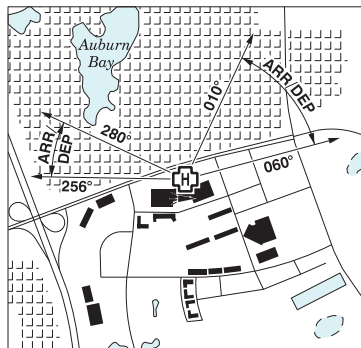
REF	N50 57 18 W113 58 22 Adj 15°E (2013) UTC-7(6) Elev 3418' VTA A5005	
OPR	Al Morrison 403-540-1125 Cert PPR	
PF	A-1 C-2,3,4,5,6	
FLT PLN	<p>FIC Edmonton 866-WXBRIEF (Toll free within Canada) or 866-541-4102 (Toll free within Canada & USA)</p> <p>ACC Edmonton IFR 888-358-7526</p>	
HELI DATA	FATO 54' x 54' non-supporting TLOF 45' x 45' CONC Safety Area 85' x 85' 5,000 lbs Opr 14-03Z‡	
LIGHTING	RF(LO)	
COMM		
VFR ADV	119.4	
PRO	Arr/dep 075° to 120° fr heli slope 16% (H3), day/night use. Arr/dep 255° fr heli, slope 8% (H3), day/night use. Avoid Calgary Animal Shelter Adj NE	
CAUTION	Avoid p-line to W of heli along N-S road when using 255° path. Lgtd twr 3890 ASL (465 AGL) 0.7NM SSE.	

CALGARY VFR TERMINAL PROCEDURES CHART



CALGARY / SOUTH HEALTH CAMPUS (HOSP) AB (Heli)

CSH3



REF	N50 52 58 W113 57 07 11SE 15°E (2013) UTC-7(6) Elev 3486' VTA A5005
OPR	Alberta Health Services 1-888-999-3770 Cert NVIS OPS AUTH PPR
PF	A-1,4 C-2,3,5,6
FLT PLN	
FIC	Edmonton 866-WXBRIEF (Toll free within Canada) or 866-541-4102 (Toll free within Canada & USA)
ACC	Edmonton IFR 888-358-7526
HELI DATA	FATO 86' dia non-supporting TLOF 57' x 57' CONC elevated rooftop, 18,000 lbs Safety Area 115' dia Max heli overall length 57.4' (CAR 602.96)
RCR	Opr
LIGHTING	RY(ME) PN
COMM	
VFR ADV	119.4
PRO	Arr/dep 010° to 060° and 256° to 280° fr heli, (H1) (CAR 602.96) Do not overfly abv-gnd gas pipeline (see sketch).
CAUTION	Lgtd elevator 72' S of heli. Multiple light poles N of heli.

ALBERTA

AERODROME / FACILITY DIRECTORY

CALGARY / BLUE-CON AB (Heli)

CBC6

REF	N50 59 49 W113 53 38 2E 14°E (2014) UTC-7(6) Elev 3440' VTA A5005	
OPR	Matt Haasen 403-273-1144 Cert PN	
PF	A-1 C-2,3,4,5,6	
FLT PLN		
FIC	Edmonton 866-WXBRIEF (Toll free within Canada) or 866-541-4102 (Toll free within Canada & USA)	
ACC	Edmonton IFR 888-358-7526	
HELI DATA	FATO/TLOF 86' dia CONC Safety Area 87' dia Max heli overall length 42.7'	
RCR	Opr Day VFR only	
COMM		
VFR ADV	119.4	
PRO	Arr/dep 239° to 254° and 175° to 194° fr heli, slope 6% (H3).	
CAUTION	P-line oriented N-S adj E heli. Poles and wires are day marked in the vic of heli.	

ELEV 3440

