
FLIGHT PLAN & SITE SURVEY

M 144-5306 OWEN SOUND R/C BARNSTORMERS- NOTRE
DAME SCHOOL INDOOR SITE

May 22, 2026



IMPORTANT NOTICE

Please ensure you have received all required authorizations prior to flight. This Site Survey was created using RPAS Wilco. The user accepts all responsibility for the accuracy of the information.

Terms & Conditions: rpswilco.com/#tnc

Mission Information

M 144-5306 OWEN SOUND R/C BARNSTORMERS- NOTRE DAME SCHOOL INDOOR SITE

FLIGHT DETAILS

Reference No:	MAAC-144-5306
Project Name:	OWEN SOUND R/C BARNSTORMERS
Pilot Name:	MAAC
Pilot Certificate:	
Mission Type:	VLOS
Flight Start:	May 22, 2026 10:55 PM
Flight End:	May 22, 2026 11:55 PM

LOCATION DETAILS

Flight Address:	NOTRE DAME SCHOOL INDOOR SITE
Latitude:	44° 34' 48.40" N (44.58)
Longitude:	80° 55' 20.21" W (-80.922)
Field Elevation:	705 ft MSL
Altitude / Radius:	400 ft / 926 m (0.5 nm)
Classification:	UNCONTROLLED
FIR / Contact:	CZYZ / 905-676-4509

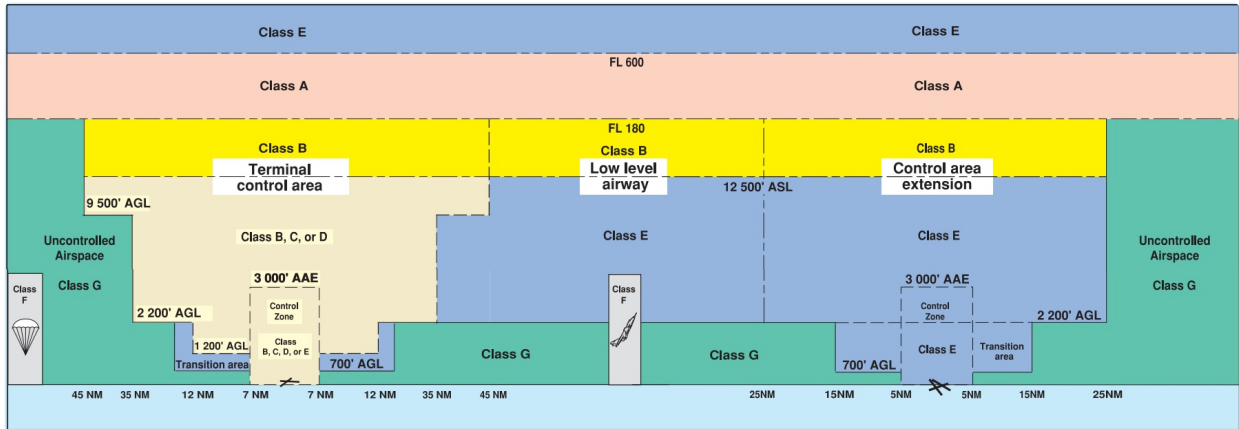
REPORT CONTENTS

Site Survey • Obstacles (if available) • Nearby Aerodromes • Canadian Aviation Regulations • GFA • Aerodrome Supplements • METAR & TAF • NOTAMs • CFS

Airspace Classification

MISSION LOCATION SURVEY

AIRSPACE MAP



OVERLYING AIRSPACES

Class	Name	Floor	Ceiling
E	Southern Ontario Low Level Control Area f) [CAE]	3500MSL	18000MSL
E	Warton, ON [TA]	700AGL	18000MSL
E	T688-1 Fixed RNAV Route	2200AGL	18000MSL
F	CYR501 MEAFORD RANGE, ON	SFC	12000MSL
E	V300-2 VHF/UHF Airway	2200AGL	18000MSL
E	Warton, ON [CZ]	SFC	3000GND

NEAREST AERODROMES & DISTANCE FROM OPERATION

OWEN SOUND (BRIGHTSHORES HEALTH SYSTEM) (CNK6 - HELIPORT - Cert)	Lat: 44.568	Long: -80.913	1.516KM	0.819NM	SE
MAJOR-GENERAL RICHARD ROHMER (CYOS - AERODROME - Reg)	Lat: 44.59	Long: -80.838	6.765KM	3.653NM	E
EAST LINTON (KERR FIELD) (CEL3 - AERODROME - Reg)	Lat: 44.661	Long: -80.944	9.172KM	4.952NM	N

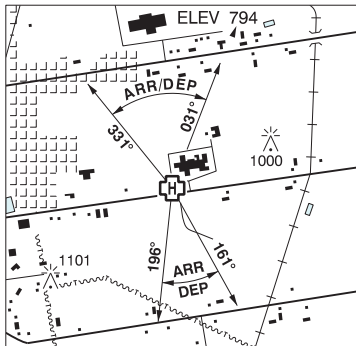
ONTARIO

AERODROME / FACILITY DIRECTORY

OWEN SOUND (BRIGHTSHORES HEALTH SYSTEM) ON (Heli)

CNK6

REF	N44 34 05 W80 54 48 0.5E 10°W UTC-5(4) Elev 794' A5000
OPR	Brightshores Health System 519-376-2121 ext 2555 Cert PPR
FLT PLN	
FIC	London 866-WXBRIEF (Toll free within Canada) or 866-541-4104 (Toll free within Canada & USA)
HELI DATA	86' x 86' asphalt 114' x 114' Rstd max heli length 57.5'
LIGHTING	RY(LO) RF(FL)
COMM	
A/G	Ambulance dispatch 129.275
PRO	Arr/dep btwn 161°-196° and 331°-031° fr heli, slope 8% (H3), day/night use



ONTARIO

AERODROME / FACILITY DIRECTORY

MEAFORD / MAJOR-GENERAL RICHARD ROHMER ON

CYOS

REF	N44 35 26 W80 50 18 3E 10°W UTC-5(4) Elev 1008' A5000 LO4 LO6 CAP	
OPR	Meaford Airport 519-376-4400, 519-377-6965, 705-849-7300 Reg Ldg fees acft abv 5000 lbs	
PF	A-1,2,7 C-3,4,5,6	
CUST	AOE/15 888-226-7277 13-21Z‡ Mon-Fri exc hols	
FLT PLN	FIC London 866-WXBRIEF (Toll free within Canada) or 866-541-4104 (Toll free within Canada & USA)	
SERVICES	14-22Z‡ O/T call out chg 1 hr PN	
FUEL	100LL, JA-1, SP	
OIL	Aeroshell 15W50, W80, W100	
S	2,4,5	
RWY DATA	Rwy 18(181°)/36(001°) 3933x75 ASPH Rwy 18, first 1849' 1.0% down, last 2083' 0.9% up AGN I	
RCR	Opr	
LIGHTING	18-(TE LO) AP, 36-(TE LO) AP ARCAL-123.0 type J	
COMM	ATF UNICOM (AU) ltd hrs O/T tfc 123.0 5NM 4000 ASL	
PRO	Rgt hand circuits Rwy 36 (CAR 602.96).	
CAUTION	331' twr 1.2NM W of rwy. Wildlife frequently on rwy.	

ONTARIO

AERODROME / FACILITY DIRECTORY

EAST LINTON (KERR FIELD) ON

CEL3

REF	N44 39 40 W80 56 39 Adj NNW 10°W UTC-5(4) Elev 757' A5000
OPR	Rick Kerr 519-372-3145 Reg
PF	D-1,2,3,4,5,6
FLT PLN	FIC London 866-WXBRIEF (Toll free within Canada) or 866-541-4104 (Toll free within Canada & USA)
RWY DATA	Rwy 11(113°)/29(293°) 2400x50 GRASS/GRVL
RCR	Opr No win maint. Rwy may be soft in spring and when wet.
COMM	ATF tfc 123.0 5NM Excluding Wiarton CZ 3800 ASL
CAUTION	Water tower aprx 0.75NM NE A/D. Lgt pole aprx 35 AGL aprx 350' fr Thld 29. Trees and hydro poles aprx 820' fr Thld 29. Trees S of Thld 11. Wildlife frequently on rwy. Unlgt'd twr 915 ASL (145 AGL) aprx 0.44NM NE A/D.

