
FLIGHT PLAN & SITE SURVEY

D 13-5319 PATRICIA REGION AEROMODELERS INC-
RUGBY LAKE LODGE

May 22, 2026



IMPORTANT NOTICE

Please ensure you have received all required authorizations prior to flight. This Site Survey was created using RPAS Wilco. The user accepts all responsibility for the accuracy of the information.

Terms & Conditions: rpaswilco.com/#tnc

Mission Information

D 13-5319 PATRICIA REGION AEROMODELERS INC- RUGBY LAKE LODGE

FLIGHT DETAILS

Reference No:	MAAC-13-5319
Project Name:	PATRICIA REGION AEROMODELERS INC
Pilot Name:	MAAC
Pilot Certificate:	
Mission Type:	VLOS
Flight Start:	May 22, 2026 09:55 PM
Flight End:	May 22, 2026 10:55 PM

LOCATION DETAILS

Flight Address:	RUGBY LAKE LODGE
Latitude:	49° 55' 2.00" N (49.917)
Longitude:	92° 56' 29.11" W (-92.941)
Field Elevation:	1188 ft MSL
Altitude / Radius:	400 ft / 926 m (0.5 nm)
Classification:	UNCONTROLLED
FIR / Contact:	CZWG / 204-983-8338

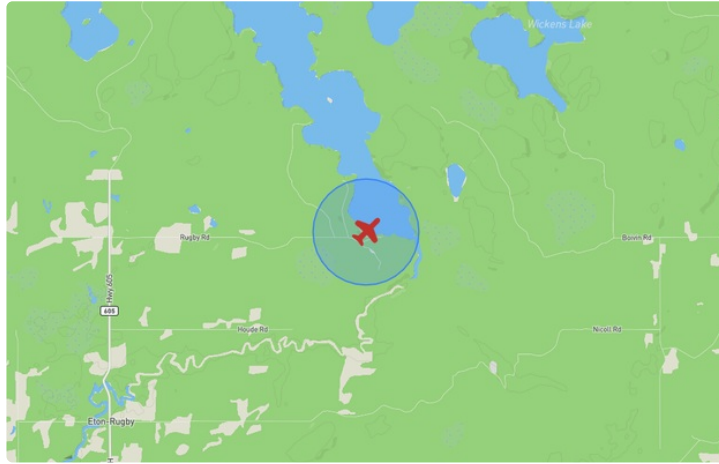
REPORT CONTENTS

Site Survey • Obstacles (if available) • Nearby Aerodromes • Canadian Aviation Regulations • GFA • Aerodrome Supplements • METAR & TAF • NOTAMs • CFS





Flight Map & MODEL Details

MISSION LOCATION SURVEY

FLIGHT AREA MAP



MISSION LOCATION DETAILS

ROLE	LATITUDE	LONGITUDE
 MODEL	49° 55' 2.00" N 49.917	92° 56' 29.11" W -92.941
 Pilot		
 Payload Op.		
 Observer		

Airspace Classification

MISSION LOCATION SURVEY

AIRSPACE MAP



OVERLYING AIRSPACES

Class	Name	Floor	Ceiling
B	Dryden, ON b) [CAE]	12500MSL	18000MSL
B	Kenora, ON b) [CAE]	12500MSL	18000MSL
B	Sioux Lookout, ON b) [CAE]	12500MSL	18000MSL
E	Dryden, ON a) [CAE]	2200AGL	18000MSL
E	T615 Fixed RNAV Route	2200AGL	18000MSL
E	Dryden Regional, ON [TA]	700AGL	18000MSL
E	Dryden Regional, ON [CZ]	SFC	3000GND
E	T647 Fixed RNAV Route	2200AGL	18000MSL
E	T675 Fixed RNAV Route	2200AGL	18000MSL

NEAREST AERODROMES & DISTANCE FROM OPERATION

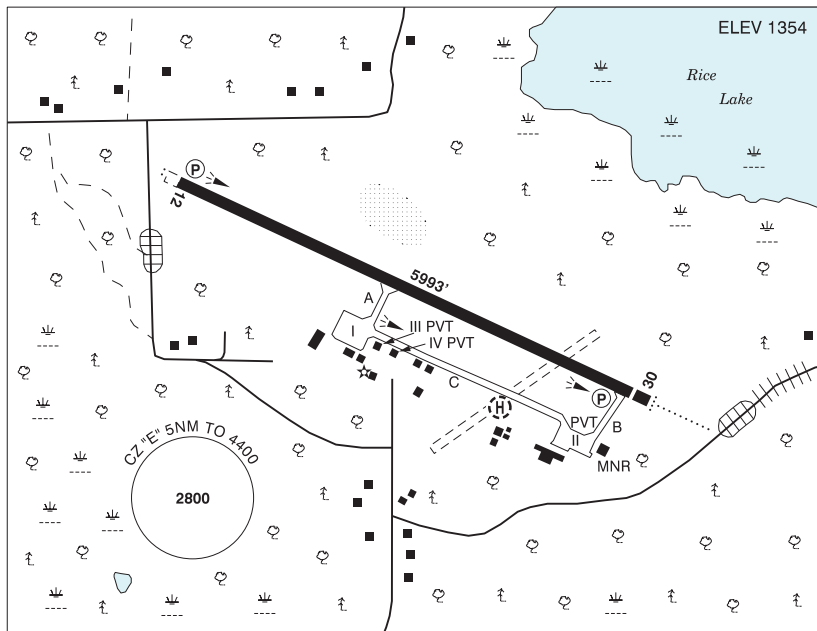
DRYDEN REGIONAL (CYHD - AERODROME - Cert)	Lat: 49.831	Long: -92.744	17.089KM	9.227NM	SE
DRYDEN (CJD8 - WATERDROME - Reg)	Lat: 49.767	Long: -92.833	18.448KM	9.961NM	SE
DRYDEN BEST WESTERN (CKV3 - HELIPOINT - Reg)	Lat: 49.783	Long: -92.833	16.784KM	9.063NM	SE

ONTARIO

AERODROME / FACILITY DIRECTORY

DRYDEN REGIONAL ON

CYHD



REF	N49 49 53 W92 44 37 4.3NE 1°W (2012) UTC-6(5) Elev 1354' A5007 LO4 HI4 CAP
OPR	City of Dryden/The Loomex Group 807-223-1130 13-23‡ Mon-Sat O/T 1 hr PN. Call out chg Cert Ldg fees
PF	A-1,6,7,8 avbl 12-01Z‡ C-2,3,4,5,6 After hrs groundside access at FBO gate code 351
FLT PLN	Pilots to open/close VFR flt plan with London rdo, FISE or by phone
FIC	London 866-WXBRIEF (Toll free within Canada) or 866-541-4104 (Toll free within Canada & USA)
WX	METAR AUTO H24 (See COMM) TAF H24, issue times: 02, 08, 14, 20Z. WxCam
SERVICES	PN and svc chg apply for after hr svc
FUEL	100LL, JA-1 (FSII avbl) May 1-Sep 30 13-01Z‡, Oct 1-Apr 30 14-23‡, ctc 807-221-8032 or 807-937-5122 or Fax 807-937-6222
OIL	20W50 and TURBO 2380 only
S	1(ltd),2,3,4,5,6
MILCON	Morgan Aviation 807-937-5122
RWY DATA	Rwy 12(116°)/30(296°) 5993x150 ASPH Thld 30 displ 197'.
RWY CERT	Rwy 12/30 AGN IV
TWY	Twy C asphalt, 1000' mid-section gravel sfc.
APRON	Apron I public, overnight pkg fees, Apron II pvt PN 807-223-1130, Apron III pvt, Apron IV pvt
RCR	Opr 13-23‡ Mon-Sat O/T 1 hr PN. Call out chg CRFI, PCN 1 hr PN 807-323-1954.
LIGHTING	12-AS(TE HI) P1, 30-AD(TE HI) P1 ARCAL-122.1 type K

ONTARIO

AERODROME / FACILITY DIRECTORY

DRYDEN REGIONAL ON (Cont'd)

CYHD

COMM	RCO	Sioux Lookout rdo 122.1 (RAAS)
	MF	Sioux Lookout rdo 122.1 5NM 4400 ASL (CAR 602.98)
	PAL	Winnipeg Ctr 132.2
	A/G	MNR Ops 122.9
	AWOS	128.7
NAV	DME	IHD 109.7 Ch 34 N49 50 06 W92 44 59 (1349')
	ILS	IHD 109.7 (Rwy 12) RVR
	CAUTION	Rock outcrop 740' from dep end of Rwy 12, 690' rgt of centreline 1465 ASL. Possibility of wildlife within aprt perimeter. Aerobatics may be in progress over aprt 4400 ASL & below.

CANADA WATER AERODROME SUPPLEMENT

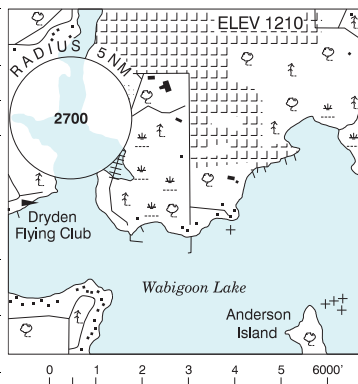
Effective 0901Z 19 March 2026 to 0901Z 18 February 2027

B46 AERODROME/FACILITY DIRECTORY

DRYDEN ON

CJD8

REF	N49 46 W92 50 1S 0° UTC-6(5) Elev 1210' A5007
OPR	Dryden Flying Club 807-221-9363 Reg
PF	B-1 C-2,3,4,5,6
FLT PLN	Pilots to open/close VFR flt plan with London rdo, FISE or by phone
FIC	London 866-WXBRIEF (Toll free within Canada) or 866-541-4104 (Toll free within Canada & USA)
SERVICES	
S	5
A/D DATA	Open water mid May-mid Nov. Ramp & docks.
COMM	
MF	Sioux Lookout rdo 122.1 5NM centred on Dryden Regional land A/D 5.2NM NE 4400 ASL (CAR 602.98)
NAV	
DME	IHD 109.7 Ch 34 N49 50 06 W92 44 58 (1383')
CAUTION	Reef. Floating logs & deadheads.

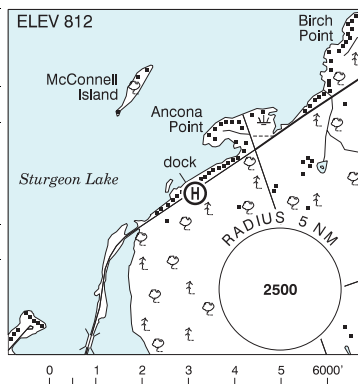


DUDLEY BAY ON — See LAKE MUSKOKA / DUDLEY BAY

DUNSFORD SEAPLANE BASE ON

CDS5

REF	N44 30 07 W78 37 05 3.2NNE 11°W (2020) UTC-5(4) Elev 812' A5000
OPR	Cecil Shaw 705-928-2933 Reg PPR
FLT PLN	
FIC	London 866-WXBRIEF (Toll free within Canada) or 866-541-4104 (Toll free within Canada & USA)
A/D DATA	Open water May-Oct
COMM	
ATF	tfc 122.8 3NM centred on Dunsford Heliport adj SE 4000 ASL



ONTARIO

AERODROME / FACILITY DIRECTORY

DRYDEN BEST WESTERN ON (Heli)

CKV3

REF	N49 47 W92 50 Adj N 0° UTC-6(5) Elev 1200' aprx A5007	
OPR	Best Western Motor Inn 807-223-3201 Reg PPR	
PF	C-1,2,3,4,5,6	
FLT PLN	Pilots to open/close VFR flt plan with London rdo, FISE or by phone	
FIC	London 866-WXBRIEF (Toll free within Canada) or 866-541-4104 (Toll free within Canada & USA)	
HELI DATA	FATO/TLOF 65' x 65' GRASS Safety Area 88' x 88' Max heli overall length 43.5'	
COMM	MF Sioux Lookout rdo 122.1 5NM centred on Dryden Regional A/D 4.5NM NE 4400 ASL (CAR 602.98).	
PRO	Arr/Dep 300° to 070° fr heli, slope 8%	
CAUTION	Smoke stacks N49 46 57 W92 50 44, 365 AGL 1600 ASL 0.5NM W of heli.	