
FLIGHT PLAN & SITE SURVEY

N 602-5325 CLUB D'AEROMODELISME ST-PRIME- CLUB
AEROMDELISTE ST-PRIME

May 22, 2026



IMPORTANT NOTICE

Please ensure you have received all required authorizations prior to flight. This Site Survey was created using RPAS Wilco. The user accepts all responsibility for the accuracy of the information.

Terms & Conditions: rpswilco.com/#tnc

Mission Information

N 602-5325 CLUB D'AEROMODELISME ST-PRIME- CLUB AEROMDELISTE ST-PRIME

FLIGHT DETAILS

Reference No:	MAAC-602-5325
Project Name:	CLUB D'AEROMODELISME ST-PRIME
Pilot Name:	MAAC
Pilot Certificate:	
Mission Type:	VLOS
Flight Start:	May 22, 2026 10:55 PM
Flight End:	May 22, 2026 11:55 PM

LOCATION DETAILS

Flight Address:	CLUB AEROMDELISTE ST-PRIME
Latitude:	48° 35' 15.00" N (48.587)
Longitude:	72° 20' 59.00" W (-72.35)
Field Elevation:	384 ft MSL
Altitude / Radius:	400 ft / 926 m (0.5 nm)
Classification:	UNCONTROLLED
FIR / Contact:	CZUL / 514-633-3365

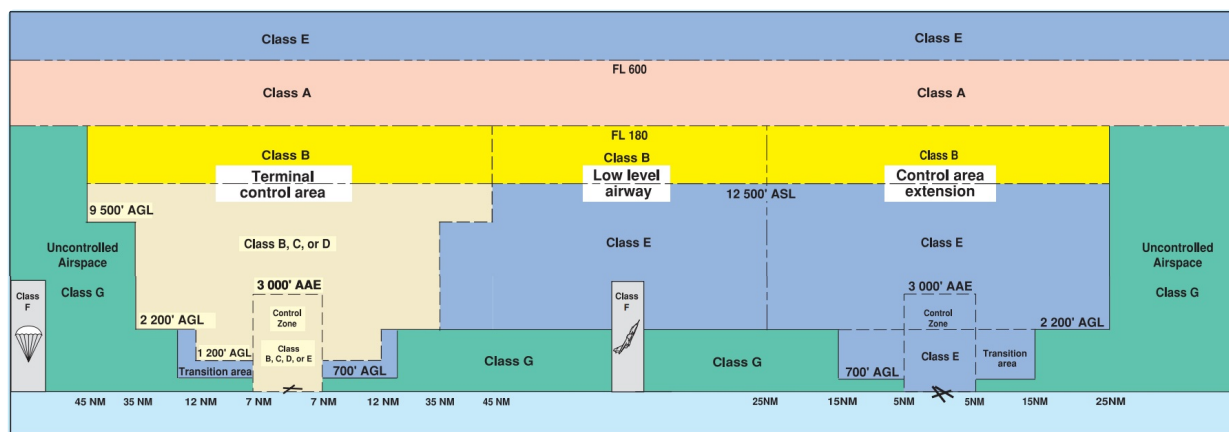
REPORT CONTENTS

Site Survey • Obstacles (if available) • Nearby Aerodromes • Canadian Aviation Regulations • GFA • Aerodrome Supplements • METAR & TAF • NOTAMs • CFS

Airspace Classification

MISSION LOCATION SURVEY

AIRSPACE MAP



OVERLYING AIRSPACES

Class	Name	Floor	Ceiling
E	Roberval, QC [TA]	700AGL	1800MSL
E	Roberval, QC [CAE]	2200AGL	1800MSL
E	T699 Fixed RNAV Route	2200AGL	1800MSL
E	Roberval, QC [CZ]	SFC	3000GND
F	CYR 6.3.0-1 ROBERVAL DETENTION FACILITY, QC	SFC	1400MSL
F	CYR628 BAGOTVILLE, QC	8000MSL	310STD
F	CYR664 BAGOTVILLE, QC	310STD	999STD
F	CYA641 (M) BAGOTVILLE, QC	SFC	8000MSL

NEAREST AERODROMES & DISTANCE FROM OPERATION

ROBERVAL (CYRJ - AERODROME - Cert)	Lat: 48.52	Long: -72.266	9.743KM	5.261NM	SE
LAC-SAINT JEAN (CYDO - AERODROME - Reg)	Lat: 48.777	Long: -72.375	21.114KM	11.401NM	N
POTVIN HELI-BASE (CPH4 - HELIPORT - Reg)	Lat: 48.931	Long: -72.205	39.623KM	21.395NM	N

QUEBEC

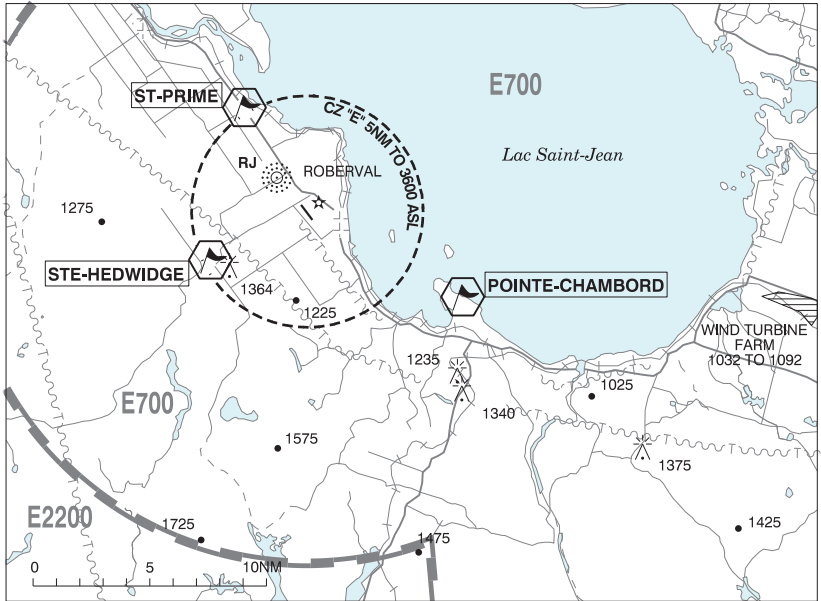
AERODROME / FACILITY DIRECTORY

ROBERVAL QC

CYRJ

REF	N48 31 12 W72 15 57 2W 17°W (2013) UTC-5(4) Elev 586' A5010 LO6 LO7 HI5 HI6 CAP	
OPR	Services ADR Inc 418-275-2344 Cert	
PF	A-6,7,8 C-1,2,3,4,5	
FLT PLN	(bil)	
FIC	Québec 866-GOMÉTÉO or 866-WXBRIEF (Toll free within Canada) or 866-541-4105 (Toll free within Canada & USA)	
ACC	Montréal 800-633-1353	
WX	METAR H24. TAF 13-03Z†, issue times: 13, 20Z (DT 12, 14, 20Z).	
SERVICES		
FUEL	100LL, JA-1	
OIL	15W50, W100, W100+, Turbine Oil	
S	1,4,5,6	
PVT ADV	Services ADR Inc 130.3 1200-2200Z† Mon-Fri, 1300-2100Z† Sat-Sun ltd availability.	
RWY DATA	Rwy 16(160°)/34(340°) 5000x150 ASPH Rwy 16 down 0.52%	
RWY CERT	Rwy 16/34 AGN IIIA	
APRON	Advs Services ADR Inc on 130.3 for prkg. ltd availability.	
RCR	Opr 1200-2200Z† Mon-Fri 1300-2100Z† Sat-Sun. O/T for MEDEVAC 2 hr PN for RSC/CRFI, 3 hr PN for win maint. O/T for other acft 6 hr PN for RSC/CRFI and win maint. Call out chg 418-275-2344 PCN	
LIGHTING	16-AO(TE ME), 34-AO(TE ME) P2 ARCAL-122.2 type K	
COMM	(bil)	
RCO	Rouyn rdo 122.2 PTC avbl (RAAS) 11-03Z† Québec rdo 123.55 5680 (FISE) 126.7 (bcst)	
MF	Rouyn rdo 11-03Z† O/T tfc 122.2 5NM 3600 ASL (CAR 602.98)	
NAV		
NDB	RJ 378 (M) N48 32 41 W72 17 40	
CAUTION	P-line W of Thld 34.	

ROBERVAL VFR TERMINAL PROCEDURES CHART



NAME	IDENT	LAT/LONG
POINTE-CHAMBORD	VCHAM	N48° 27' 47" W072° 05' 17"
STE-HEDWIDGE	VCHDG	N48° 28' 50" W072° 21' 45"
ST-PRIME	VCSTP	N48° 35' 38" W072° 20' 12"

QUEBEC

AERODROME / FACILITY DIRECTORY

LAC-SAINT-JEAN QC

CYDO

REF	N48 46 36 W72 22 30 7.8NE St-Félicien 16°W (2020) UTC-5(4) Elev 373' A5010 LO7 HI1 HI5 HI6 CAP	
OPR	Aérodrome Lac-Saint-Jean 418-679-3543/7621, 418-637-0188 Reg Ldg fees (commercial acft)	
PF	A-1,7 (ltd hrs) C-3,4,5,6 D-2	
FLT PLN	(bil)	
FIC	Québec 866-GOMÉTÉO or 866-WXBRIEF (Toll free within Canada) or 866-541-4105 (Toll free within Canada & USA)	
ACC	Montréal 800-633-1353	
SERVICES	13-21Z‡	
FUEL	100LL, JA-1 418-637-0188, 418-679-3543 O/T call out chg.	
OIL	All	
S	1,2,3,4,5,6	
RWY DATA	Rwy 11(110°)/29(290°) 5001x100 ASPH AGN IIIB Rwy 03(032°)/21(212°) 3563x72 GRVL Clsd Nov 01-Apr 30	
RCR	Opr Win maint 12-23Z O/T MEDEVAC only 3 hrs PN 418-637-0188, 514-607-8080.	
LIGHTING	11-AS(TE ME) P1, 29-AS(TE ME) P1 ARCAL-122.7 type K	
COMM	(bil)	
ATF	tfc 122.7 5NM 3400 ASL	

QUEBEC

AERODROME / FACILITY DIRECTORY

DOLBEAU-MISTASSINI / POTVIN HELI-BASE QC (Heli)**CPH4**

REF	N48 55 51 W72 12 18 17°W (2014) UTC-5(4) Elev 425' A5010
OPR	R. Potvin 418-671-1222 Reg PPR
FLT PLN	
FIC	Québec 866-GOMÉTÉO or 866-WXBRIEF (Toll free within Canada) or 866-541-4105 (Toll free within Canada & USA)
HELI DATA	24' x 60' asphalt
RCR	Opr
COMM	
ATF	tfc 123.2 5NM 3500 ASL