
FLIGHT PLAN & SITE SURVEY

G 868-5328 DESERONTO ROYAL FLYING CLUB-
DESERONTO RFC WATERFRONT SITE

May 22, 2026



IMPORTANT NOTICE

Please ensure you have received all required authorizations prior to flight. This Site Survey was created using RPAS Wilco. The user accepts all responsibility for the accuracy of the information.

Terms & Conditions: rpaswilco.com/#tnc

Mission Information

G 868-5328 DESERONTO ROYAL FLYING CLUB- DESERONTO RFC WATERFRONT SITE

FLIGHT DETAILS

Reference No:	MAAC-868-5328
Project Name:	DESERONTO ROYAL FLYING CLUB
Pilot Name:	MAAC
Pilot Certificate:	
Mission Type:	VLOS
Flight Start:	May 22, 2026 10:55 PM
Flight End:	May 22, 2026 11:55 PM

LOCATION DETAILS

Flight Address:	DESERONTO RFC WATERFRONT SITE
Latitude:	44° 11' 30.80" N (44.192)
Longitude:	77° 2' 56.10" W (-77.049)
Field Elevation:	249 ft MSL
Altitude / Radius:	400 ft / 926 m (0.5 nm)
Classification:	UNCONTROLLED
FIR / Contact:	CZYZ / 905-676-4509

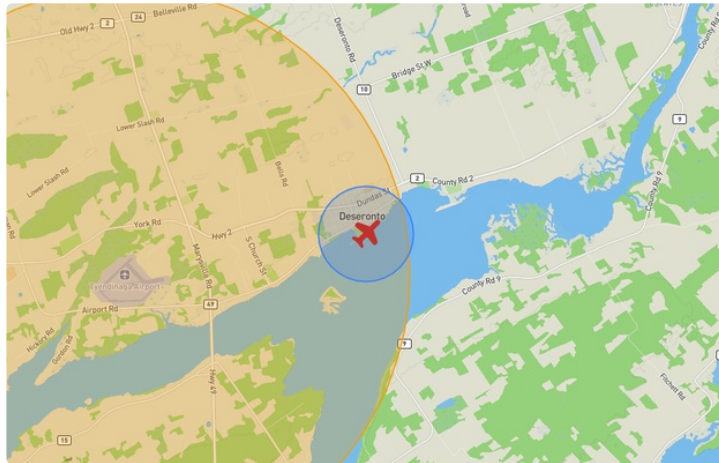
REPORT CONTENTS

Site Survey • Obstacles (if available) • Nearby Aerodromes • Canadian Aviation Regulations • GFA • Aerodrome Supplements • METAR & TAF • NOTAMs • CFS





Flight Map & MODEL Details

MISSION LOCATION SURVEY

FLIGHT AREA MAP



MISSION LOCATION DETAILS

ROLE	LATITUDE	LONGITUDE
 MODEL	44° 11' 30.80" N 44.192	77° 2' 56.10" W -77.049
 Pilot		
 Payload Op.		
 Observer		

Airspace Classification

MISSION LOCATION SURVEY

AIRSPACE MAP



OVERLYING AIRSPACES

Class	Name	Floor	Ceiling
F	CYR532 MOUNTAIN VIEW, ON	SFC	1000MSL
B	Southern Ontario Low Level Control Area e) [CAE]	17000MSL	18000MSL
E	Trenton, ON d) [TCA]	700AGL	17000MSL
E	T781 Fixed RNAV Route	2200AGL	18000MSL
E	Kingston, ON [TA]	700AGL	18000MSL

NEAREST AERODROMES & DISTANCE FROM OPERATION

TYENDINAGA (MOHAWK) (CPU6 - AERODROME - Reg)	Lat: 44.185	Long: -77.108	4.76KM	2.57NM	W
BELLEVILLE (MARKER FIELD) (CNU4 - AERODROME - Reg)	Lat: 44.192	Long: -77.309	20.771KM	11.215NM	W
PICTON (GREENBUSH) (CGB3 - AERODROME - Reg)	Lat: 44.001	Long: -77.073	21.303KM	11.503NM	S

ONTARIO

AERODROME / FACILITY DIRECTORY

TYENDINAGA (MOHAWK) ON

CPU6

REF	N44 11 05 W77 06 28 3SW 13°W UTC-5(4) Elev 260' A5000	
OPR	First Nations Technical Institute 1-800-263-4220 ext 5006, 613-885-1340 13-20Z† Mon-Fri exc hols Reg PPR exc MEDEVAC and emerg	
PF	B-1 13-20Z† Mon-Fri exc hols C-2,5 D-3,4,6	
FLT PLN	FIC London 866-WXBRIEF (Toll free within Canada) or 866-541-4104 (Toll free within Canada & USA)	
RWY DATA	Rwy 09/27 4270x144 ASPH Thld 09 displ 390'. Rwy 15/33 2575x144 ASPH Thld 15 displ 150'. RCR Opr Ltd win maint	
LIGHTING	09-(LO non-std, May-Nov), 27-(LO non-std, May-Nov)	
COMM	ATF Mohawk UNICOM ltd hrs O/T tfc 123.5 5NM 3300 ASL	
CAUTION	Extv bird activity Apr-Oct. Possibility of NORDO maint equip on rwys. Extv fit tng activity on and within 20NM of A/D.	

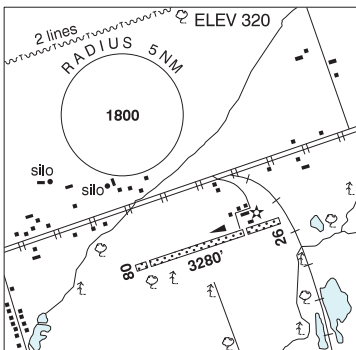
ONTARIO

AERODROME / FACILITY DIRECTORY

BELLEVILLE (MARKER FIELD) ON

CNU4

REF	N44 11 32 W77 18 34 1.8E 12°W UTC-5(4) Elev 320' A5000
OPR	D. Byrd 613-962-7337 Reg PPR
PF	B-1 C-2,3,4,5,6
FLT PLN	FIC London 866-WXBRIEF (Toll free within Canada) or 866-541-4104 (Toll free within Canada & USA)
SERVICES	S 1
RWY DATA	Rwy 08/26 3280x75 GRASS/GRVL Thld 08 displ 240'. Thld 26 displ 740'. RCR Opr No win maint.
COMM	ATF tfc 122.8 3.5NM 3300 ASL Area underlies E quadrant of the CYTR Mil CZ
PRO	Refer VTPC Trenton for east & westbound rtes & Belleville Area alt.
CAUTION	Glider activity to 2000 ASL.



ONTARIO

AERODROME / FACILITY DIRECTORY

PICTON (GREENBUSH) ON

CGB3

REF	N44 00 04 W77 04 24 2.87 ESE 12°W (2014) UTC-5(4) Elev 460' A5000
OPR	Jeff Douglass 613-885-6917 Reg PPR
PF	B-1 C-2,3,4,5 D-6
FLT PLN	
FIC	London 866-WXBRIEF (Toll free within Canada) or 866-541-4104 (Toll free within Canada & USA)
SERVICES	
FUEL	MOGAS PN Opr
RWY DATA	Rwy 05(049°)/23(229°) 1500x60 GRASS
RCR	Opr No win maint. Rwy soft in spring.
COMM	
ATF	tfc 123.2 5NM 3500 ASL
CAUTION	Runway slopes down Thld 23. Rwy narrows at mid-field to cross seasonal drainage ditch. Treeline nearest to hangar may cause mechanical turbulence.

