
FLIGHT PLAN & SITE SURVEY

A 198-5350 COLD LAKE RADIO CONTROL CLUB- COLD
LAKE RC FLYERS

May 22, 2026



IMPORTANT NOTICE

Please ensure you have received all required authorizations prior to flight. This Site Survey was created using RPAS Wilco. The user accepts all responsibility for the accuracy of the information.

Terms & Conditions: rpswilco.com/#tnc

Mission Information

A 198-5350 COLD LAKE RADIO CONTROL CLUB- COLD LAKE RC FLYERS

FLIGHT DETAILS

Reference No:	MAAC-198-5350
Project Name:	COLD LAKE RADIO CONTROL CLUB
Pilot Name:	MAAC
Pilot Certificate:	
Mission Type:	VLOS
Flight Start:	May 22, 2026 08:56 PM
Flight End:	May 22, 2026 09:56 PM

LOCATION DETAILS

Flight Address:	COLD LAKE RC FLYERS
Latitude:	54° 24' 8.34" N (54.402)
Longitude:	110° 5' 36.88" W (-110.094)
Field Elevation:	1775 ft MSL
Altitude / Radius:	400 ft / 926 m (0.5 nm)
Classification:	UNCONTROLLED
FIR / Contact:	CZEG / 780-890-8397

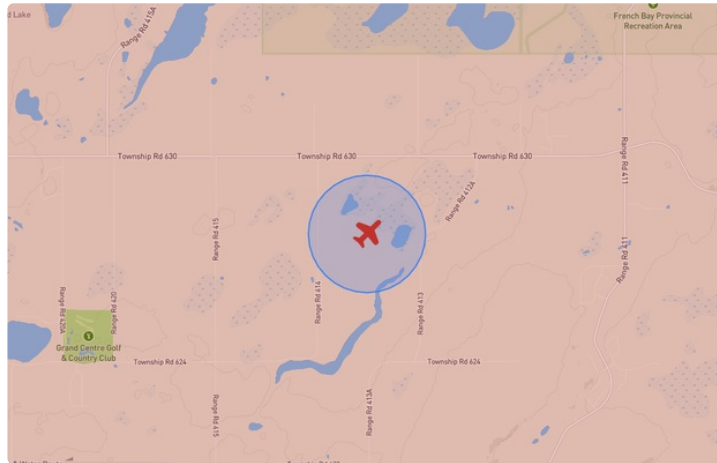
REPORT CONTENTS

Site Survey • Obstacles (if available) • Nearby Aerodromes • Canadian Aviation Regulations • GFA • Aerodrome Supplements • METAR & TAF • NOTAMs • CFS





Flight Map & MODEL Details

MISSION LOCATION SURVEY

FLIGHT AREA MAP



MISSION LOCATION DETAILS

ROLE	LATITUDE	LONGITUDE
 MODEL	54° 24' 8.34" N 54.402	110° 5' 36.88" W -110.094
 Pilot		
 Payload Op.		
 Observer		

Airspace Classification

MISSION LOCATION SURVEY

AIRSPACE MAP



OVERLYING AIRSPACES

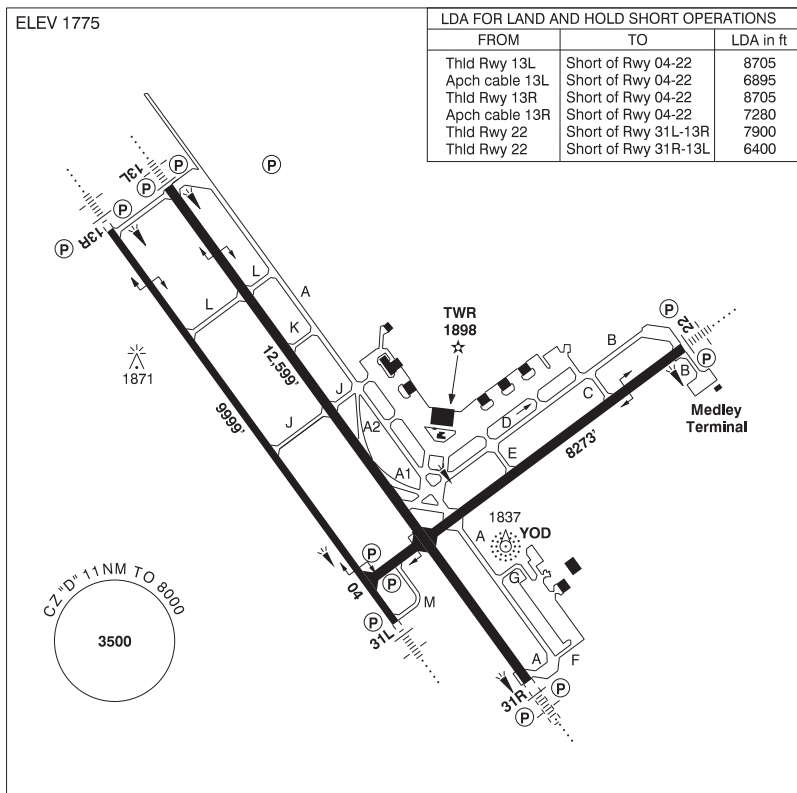
Class	Name	Floor	Ceiling
D	Cold Lake, AB [CZ]	SFC	8000MSL
E	Cold Lake, AB e) [TCA]	700AGL	18000MSL
B	North Battleford, SK b) [CAE]	12500MSL	18000MSL

NEAREST AERODROMES & DISTANCE FROM OPERATION

GROUP CAPTAIN R.W. MCNAIR (CYOD - AERODROME - Mil)	Lat: 54.405	Long: -110.282	12.214KM	6.595NM	W
COLD LAKE HEALTHCARE CENTRE HELIPORT (CCH9 - HELIPORT - Cert)	Lat: 54.468	Long: -110.195	9.833KM	5.309NM	NW
COLD LAKE REGIONAL (CEN5 - AERODROME - Reg)	Lat: 54.477	Long: -110.269	14.086KM	7.606NM	NW

COLD LAKE / GROUP CAPTAIN R.W. McNAIR AB

CYOD



REF	N54 24 19 W110 16 56 5.5SW 13°E (2022) UTC-7(6) Elev 1775' A5015 LO1 HI3 CAP
OPR	DND 780-840-8000 NTAS 531-8011 CSN 319-690-8000/8011 Mil PPR
PF	B-1 C-2,3,5,6 D-4
CUST	AOE/M Mil acft and personnel <u>ONLY</u> - Avbl thru Mil Police.
FLT PLN	PPR 24 hr ntc all mil & civ flts ctc 780-840-8000 Ext 8595, CSN 319-690-8595. Flt Pln Ctr must be notified of arr delays in excess of 1 hr.
FIG	Edmonton 866-WXBRIEF (Toll free within Canada) or 866-541-4102 (Toll free within Canada & USA)
ACC	Edmonton IFR 888-358-7526
WX	METAR H24. TAF H24, issue times: 00, 06, 12 & 18Z (plus 15 and 21Z dur mil flt ops). Met brief for mil only. Lcl Met Section CSN 690-7425/8130. O/T JMC 1-800-WXMETEO (996-3836) or CSN 432-2613. (See COMM)

ALBERTA

AERODROME / FACILITY DIRECTORY

COLD LAKE / GROUP CAPTAIN R.W. McNAIR AB (Cont'd)

CYOD

SERVICES	All tran acft require PPR thru 4 Wg Ops 780-840-8000 ext 8595. Mil and Civ tran svcs avbl 06-18 hrs lcl Mon-Fri exc hols. O/T by special arng. Prior coord required for hg space with 4 Wg Ops. Access to Medley Terminal after hours is provided through MP Section 780-840-8000 ext 8180. Acft start & refuelling with aircrew supervision exc for B412. Ltd Mil Type I D-ice. 90 min PN Info 780-840-8000 ext 8595.
FUEL	F-34, SP, HPR
OIL	133, 148, 156
S	1 (ltd),6
ARFF	CAT 5
SUP FL	D-ice mil use only, Type I only, LHOX, LOX
JASU	CE1, 3, 8, 9, 13, 16, CA 1, CEA1
MIL ADV	Tran acft call Wg Ops 30 min prior to ETA on 340.2
RWY DATA	Rwy 13L(131°)/31R(311°) 12,599x200 ASPH Rwy 13R(131°)/31L(311°) 9999x150 ASPH Rwy 04(041°)/22(221°) 8273x200 ASPH RAG: Rwy 13L BAK 12 Mobile Aircraft Arrest System, B, (1700'); Rwy 13R/31L BAK 12 Smart Arrest System, B, (1360'); Rwy 04 BAK 12 Smart Arrest System, B, (1305'); Rwy 22 BAK 12 Smart Arrest System, B, (1460')
RCR	Opr CRFI Medley Tml ramp wt ltd. S100, T200, ST248, TT325. Rwy 13L/31R PCN 99/F/D/X/T. Rwy 13R/31L PCN 100/R/A/X/T. Rwy 04/22 PCN 77/F/D/X/U.
LIGHTING	04-(TE HI) P2, 13L-AN (non-std 3000' (1600' SF)) (TE HI) P2 GPI 879' TCH 46', 13R-AN (non-std 3000' (1600' SF)) (TE HI) P2 GPI 850' TCH 44', 22-AN (non-std 2200' (800 SF)) (TE HI) P2 GPI 850' TCH 44', 31L-AN (non-std 3000' (1600' SF)) (TE HI) P2 GPI 850' TCH 44' (Wing bar left side only), 31R-AN (non-std 3000' (1600' SF)) (TE HI) P2 GPI 850' TCH 44'
COMM	Flight Advisory hrs of operation dates & hrs may vary and will be broadcasted on ATIS.
ATIS	118.25 260.0
CLNC DEL	120.6 230.6
GND	121.9 275.8
TWR	126.2 226.5 236.6 255.7 (E) ltd hrs. O/T Cold Lake advsy 126.2 (E)
TML	124.5 322.8 (E)
ARR	119.4x 120.6x 124.5x 128.2x 134.1x 269.6x 279.8x 294.6x 324.3x 336.0x 350.5x 378.5x (E)
DEP	124.5x 322.8 (U)
MIL	Wg Ops 340.2 Tran svcs 308.7
PMSV	344.6
NAV	
NDB	YOD 398 (L) N54 23 49 W110 16 18 Preventive maint 20-23Z± Wed if required
TACAN	UOD 113.5 Ch 82 N54 24 31 W110 17 45 (1806') Preventive maint 01-07Z± first and third Fri of each month.
ILS	IOD 109.3 (Rwy 31R) (LOC back course Rwy 13L avail mil use only) RVR. Preventive maint 01-07Z± first and third Fri of each month.
PAR	119.4x 120.6x 124.5x 128.2x 134.1x 269.6x 279.8x 294.6x 324.3x 336.0x 350.5x 378.5x (E) 14-06Z± Mon-Fri, clsd Sat/Sun & Hol, hrs may vary without notice. PAR preventive maint 01-07Z± Wed dur VFR hol altn Thu. PSR & SSR preventive maint 01-07Z± Tue dur VFR hol altn Wed.

ALBERTA

AERODROME / FACILITY DIRECTORY

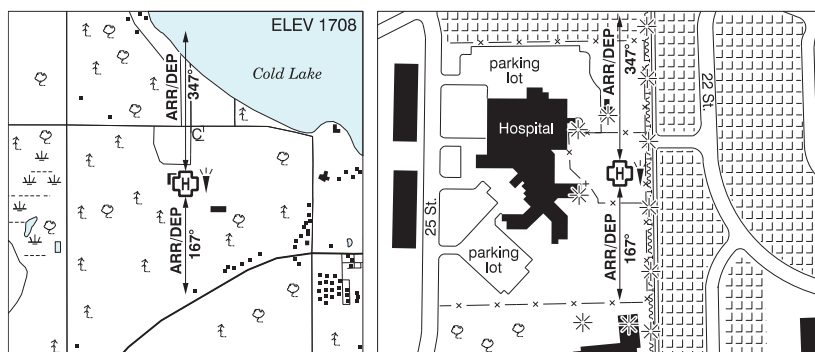
COLD LAKE / GROUP CAPTAIN R.W. McNAIR AB (Cont'd)

CYOD

PRO	<p>-Tfc ptns convl 2500 ASL, Jet 3200 ASL -Jet acft in circuit maintain 3200 ASL til commencing base turn. -For straight-in apch (jet acft), maintain 3000 ASL as long as practicable before commencing final descent. -When Rwy 13 in use, remain on or above PAR or PAPI GP to the extent practicable. Consistent with safety of ops, acft should be flown on apch so as to give best possible performance with noise abatement. -In VMC, VFR & IFR acft on dep, overshoot, or missed approach shall not exceed 2500 ASL til dep end of rwy. Noise Abatement Pro: Wkd 0400-1330Z†, Wknds fr Fri 0400Z† to Mon 1330Z† & hol All day. Fixed wing jet acft - straight in VFR or IFR recovery only, no overhead breaks (unless prior appr from Wg Ops), rotary wing acft recover via the W, S or SE only.</p>
CAUTION	<p>Model rocket firing at N54 26 43 W110 12 01 (UOD 033/3.5) & N54 19 04 W110 08 20 (UOD 122/7) 1500 AGL ocsl, voice advsy fr twr. Large acft only: twy intxns A1-A & A2-A involve sharp turns of greater than 135 degrees.</p>

COLD LAKE HEALTHCARE CENTRE HELIPORT AB (Heli)

CCH9



REF	N54 28 06 W110 11 44 Adj W 13°E (2016) UTC-7(6) Elev 1708' A5015
OPR	Alberta Health Services 780-639-3322 Fax 780-639-2960 Cert NVIS OPS AUTH PPR
PF	B-1,2,4 C-3,5 D-6,7,8
FLT PLN	
FIG	Edmonton 866-WXBRIEF (Toll free within Canada) or 866-541-4102 (Toll free within Canada & USA)
ACC	Edmonton IFR 888-358-7526
HELI DATA	FATO/TLOF 86' dia CONC Safety Area 115' dia Max heli overall length 57.4' (CAR 602.96)
RCR	Opr
LIGHTING	RW (LO) yellow LED ARCAL-123.5 type J
COMM	
TWR	Cold Lake 126.2 (E)
ATF	tfc 122.8 in civil flying area 2900 ASL (see PRO)
PRO	Arr/dep 167° & 347° fr heli, slope 16% (H2) (CAR 602.96). For civil flying area depiction and VFR arrivals - see Cold Lake/Group Captain R.W. McNair VTPC
CAUTION	Lgtd oxygen tank NW of heli. Lgtd shed N of heli. Lgtd & marked P-lines E of arr/dep. Lgtd large housing S of heli.

ALBERTA

AERODROME / FACILITY DIRECTORY

COLD LAKE REGIONAL AB

CEN5

REF	N54 28 39 W110 16 09 4W 14°E (2012) UTC-7(6) Elev 1787' A5015 LO1 CAP	
OPR	City of Cold Lake 780-594-4494 Reg	
PF	B-1 D-2,3,4,5,6	
FLT PLN		
FIC	Edmonton 866-WXBRIEF (Toll free within Canada) or 866-541-4102 (Toll free within Canada & USA)	
ACC	Edmonton IFR 888-358-7526	
SERVICES		
FUEL	100LL, JA1 Self-serve Visa/Mastercard ctc 780-594-4496	
S	1,4,5,6	
RWY DATA	Rwy 08(076°)/26(256°) 3005x75 ASPH AGN II	
RCR	Opr Ltd win maint.	
LIGHTING	08-(TE ME) P1, 26-(TE ME) P1 ARCAL-122.8 type K	
COMM		
TWR	Cold Lake 126.2 (E)	
ATF	tfc 122.8 in circuit & civil flying area 2900 ASL. (see PRO)	
PRO	Ctc Cold Lake/Group Captain R.W. McNair Twr prior to 11NM on arr & after tkof on dep. Rgt hand circuits Rwy 26 (CAR 602.96). Circuits 2500 ASL. Arr/Dep E, N & W alts & hdgs depicted on Cold Lake/Group Captain R.W. McNair VTPC. Civil flying area depicted on Cold Lake/Group Captain R.W. McNair VTPC. IFR Arrivals 1. Broadcast a "down" call on the gnd on 128.2. 2. In IFR cond(s), expect possible apch clearance delays due to mil tfc.	
CAUTION	Pilots use vigilance - High speed Jet tfc in MTCA.	