
FLIGHT PLAN & SITE SURVEY

C 594-5356 SHUSWAP LAKE AERO MODELERS- SANDY
POINT CAMPGROUND - FLOAT PLANE FLYING SITE

May 22, 2026



IMPORTANT NOTICE

Please ensure you have received all required authorizations prior to flight. This Site Survey was created using RPAS Wilco. The user accepts all responsibility for the accuracy of the information.

Terms & Conditions: rpaswilco.com/#tnc

Mission Information

C 594-5356 SHUSWAP LAKE AERO MODELERS- SANDY POINT CAMPGROUND - FLOAT PLANE FLYING SITE

FLIGHT DETAILS

Reference No:	MAAC-594-5356
Project Name:	SHUSWAP LAKE AERO MODELERS
Pilot Name:	MAAC
Pilot Certificate:	
Mission Type:	VLOS
Flight Start:	May 22, 2026 07:56 PM
Flight End:	May 22, 2026 08:56 PM

LOCATION DETAILS

Flight Address:	SANDY POINT CAMPGROUND - FLOAT PLANE FLYING SITE
Latitude:	50° 43' 44.20" N (50.729)
Longitude:	119° 18' 28.90" W (-119.308)
Field Elevation:	1158 ft MSL
Altitude / Radius:	400 ft / 926 m (0.5 nm)
Classification:	UNCONTROLLED
FIR / Contact:	CZVR / 604-586-4500

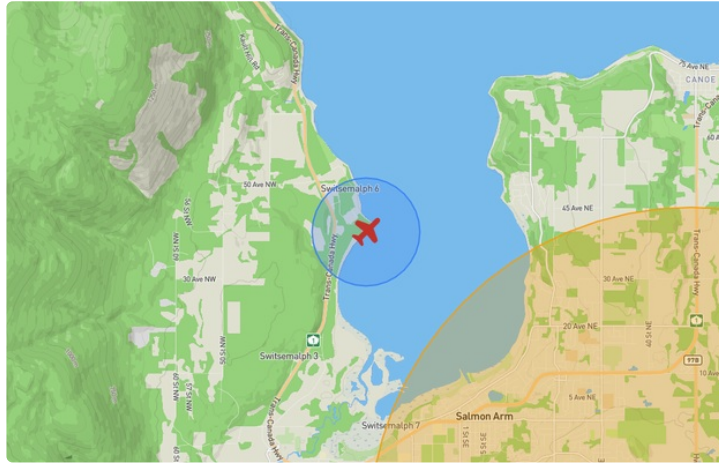
REPORT CONTENTS

Site Survey • Obstacles (if available) • Nearby Aerodromes • Canadian Aviation Regulations • GFA • Aerodrome Supplements • METAR & TAF • NOTAMs • CFS





Flight Map & MODEL Details

MISSION LOCATION SURVEY

FLIGHT AREA MAP



MISSION LOCATION DETAILS

ROLE	LATITUDE	LONGITUDE
 MODEL	50° 43' 44.20" N 50.729	119° 18' 28.90" W -119.308
 Pilot		
 Payload Op.		
 Observer		

Airspace Classification

MISSION LOCATION SURVEY

AIRSPACE MAP



OVERLYING AIRSPACES

Class	Name	Floor	Ceiling
E	3.1.2-47 [CAE]	8000AGL	18000MSL
E	T676 Fixed RNAV Route	2200AGL	18000MSL
E	T799 Fixed RNAV Route	2200AGL	18000MSL
E	T687 Fixed RNAV Route	2200AGL	18000MSL
E	North Kelowna, BC [TA]	700AGL	18000MSL
E	T646 Fixed RNAV Route	2200AGL	18000MSL
E	T713 Fixed RNAV Route	2200AGL	18000MSL
E	T674 Fixed RNAV Route	2200AGL	18000MSL

NEAREST AERODROMES & DISTANCE FROM OPERATION

SALMON ARM (CZAM - AERODROME - Reg)	Lat: 50.682	Long: -119.229	7.612KM	4.11NM	SE
ROSS CREEK (CRC3 - AERODROME - Reg)	Lat: 50.966	Long: -119.225	26.974KM	14.565NM	N
OWLS LANDING (COL4 - HELIPORT - Reg)	Lat: 50.811	Long: -118.97	25.426KM	13.729NM	E

BRITISH COLUMBIA

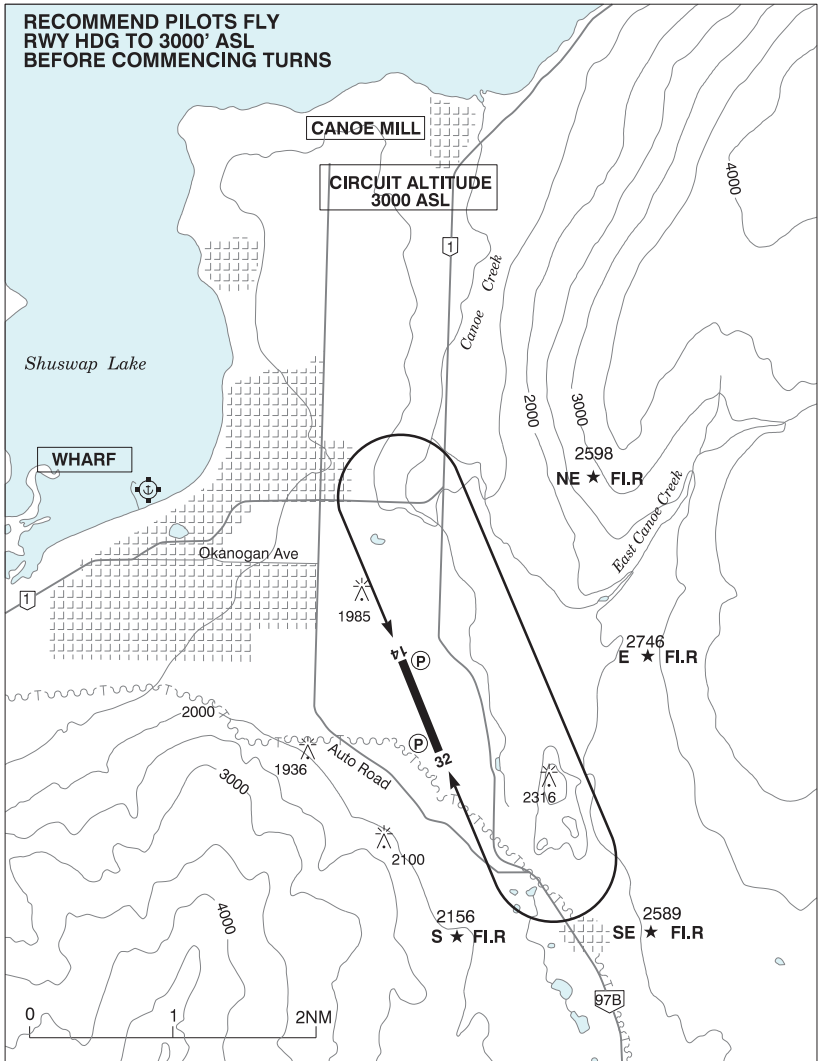
AERODROME / FACILITY DIRECTORY

SALMON ARM BC

CZAM

REF	N50 40 57 W119 13 43 2SE 16°E (2013) UTC-8(7) Elev 1751' A5005 LO2 RCAP	
OPR	City of Salmon Arm 250-832-1000 O/T 250-524-0567 Reg Ldg fees may be levied	
PF	A-1,6 C-2,3,4,5	
FLT PLN	<p>FIC Kamloops 866-WXBRIEF (Toll free within Canada) or 866-541-4101 (Toll free within Canada & USA)</p> <p>WX AUTO (see COMM) WxCam</p>	
SERVICES	<p>FUEL 100LL, JA-1, MG-3 250-832-1000 15-02Z (DT 13-04Z)</p> <p>OIL All</p> <p>S 1,2,3,4,5</p>	
RWY DATA	Rwy 14(142°)/32(322°) 4261x75 ASPH Rwy 32 first 1420' down 1.9%	
RCR	Opr Ltd win maint	
LIGHTING	14-AS(TE ME) P1 3.5°, 32-(TE ME) P1 3.5° ARCAL-122.9 type K exc RILS (rwy 14) on high setting only.	
COMM	<p>RCO Pacific rdo 122.375 (FISE) 126.7 (bcst)</p> <p>MF UNICOM ltd hrs O/T tfc 122.9 5NM 4700 ASL (CAR 602.98)</p> <p>AUTO 122.55</p>	
RESTRIC-TIONS	<p>OPERATING RESTRICTIONS</p> <p>1. Pursuant to CARS 602.96(3)(D), not certified for ngt ops unless all hazard beacons are oprg.</p>	
PRO	Circuit altitude 3000 ASL. Rgt hand circuits Rwy 32 (CAR 602.96). Night Ops: Follow circuit pro as depicted on VFR terminal ngt circuit pro chart. During parachuting activity over A/D Apr 1-Oct 31, overfly field over Thld 32.	
CAUTION	Only pilots familiar with local terrain should use this A/D dur hrs of darkness. Numerous P-lines in vic of A/D. Hang glider act sfc to 10,000 ASL within 15NM of A/D. Check for NOTAM.	

SALMON ARM VFR TERMINAL PROCEDURES CHART - NIGHT CIRCUIT PROCEDURE



BRITISH COLUMBIA

AERODROME / FACILITY DIRECTORY

ROSS CREEK BC

CRC3

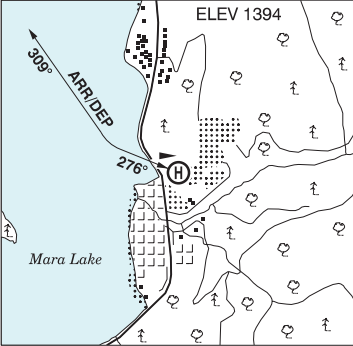
REF	N50 57 57 W119 13 32 2.4E 16°E (2015) UTC-8(7) Elev 1260' A5005	
OPR	Ross Creek Landing Ltd 604-996-2939 Reg PPR	
PF	C-2,5 D-4	
FLT PLN	FIC Kamloops 866-WXBRIEF (Toll free within Canada) or 866-541-4101 (Toll free within Canada & USA)	
SERVICES	S 4,5	
RWY DATA	Rwy 16(164°)/34(344°) 2312x70 GRVL/GRASS Rwy 34 up 1.73%	
RCR	Opr No win maint	
COMM	ATF tfc 123.2 5NM 3000 ASL	
CAUTION	Hills N of A/D. Trees to 40' S of Thld 34. Trees to 50' W of rwy. Ditches on either side of rwy. Wildlife on rwy.	

BRITISH COLUMBIA

AERODROME / FACILITY DIRECTORY

SICAMOUS / OWLS LANDING BC (Heli)

COL4

REF	N50 48 39 W118 58 13 Adj SSE 16°E (2016) UTC-8(7) Elev 1394' A5005	
OPR	Guy Maris 780-920-2191 Fax 780-483-5400 Reg PPR	
PF	C-1,2,3,4,5 D-6	
FLT PLN	FIC Kamloops 866-WXBRIEF (Toll free within Canada) or 866-541-4101 (Toll free within Canada & USA)	
HELI DATA	FATO 300' x 90' CONC/ASPH/aggregate TLOF 200' x 90' CONC/ASPH Safety Area 300' x 90' Max heli overall length 50'	
RCR	Opr 16-01Z± Mon-Fri. No win maint.	
COMM	ATF tfc 123.2 5NM 4400 ASL	
PRO	Arr/dep curved 276° to 309° fr heli, day use only. All apch and dep over lake.	
CAUTION	Unmarked p-lines and tall trees E of FATO.	