
FLIGHT PLAN & SITE SURVEY

A 11-5377 ROCKY BARNSTORMERS R/C CLUB- ROCKY
BARNSTORMERS MAIN FIELD

May 22, 2026



IMPORTANT NOTICE

Please ensure you have received all required authorizations prior to flight. This Site Survey was created using RPAS Wilco. The user accepts all responsibility for the accuracy of the information.

Terms & Conditions: rpswilco.com/#tnc

Mission Information

A 11-5377 ROCKY BARNSTORMERS R/C CLUB- ROCKY BARNSTORMERS MAIN FIELD

FLIGHT DETAILS

Reference No:	MAAC-11-5377
Project Name:	ROCKY BARNSTORMERS R/C CLUB
Pilot Name:	MAAC
Pilot Certificate:	
Mission Type:	VLOS
Flight Start:	May 22, 2026 08:56 PM
Flight End:	May 22, 2026 09:56 PM

LOCATION DETAILS

Flight Address:	ROCKY BARNSTORMERS MAIN FIELD
Latitude:	52° 20' 57.50" N (52.349)
Longitude:	114° 54' 28.90" W (-114.908)
Field Elevation:	3258 ft MSL
Altitude / Radius:	400 ft / 926 m (0.5 nm)
Classification:	UNCONTROLLED
FIR / Contact:	CZEG / 780-890-8397

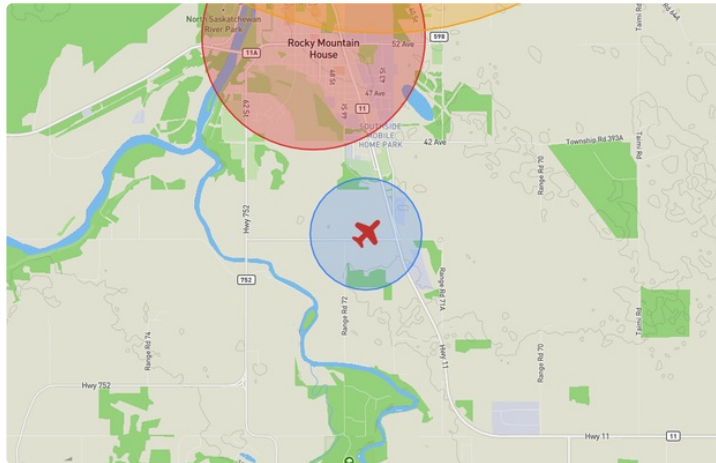
REPORT CONTENTS

Site Survey • Obstacles (if available) • Nearby Aerodromes • Canadian Aviation Regulations • GFA • Aerodrome Supplements • METAR & TAF • NOTAMs • CFS





Flight Map & MODEL Details

MISSION LOCATION SURVEY

FLIGHT AREA MAP



MISSION LOCATION DETAILS

ROLE	LATITUDE	LONGITUDE
 MODEL	52° 20' 57.50" N 52.349	114° 54' 28.90" W -114.908
 Pilot		
 Payload Op.		
 Observer		

Airspace Classification

MISSION LOCATION SURVEY

AIRSPACE MAP



OVERLYING AIRSPACES

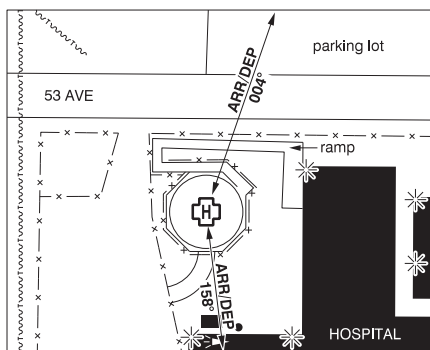
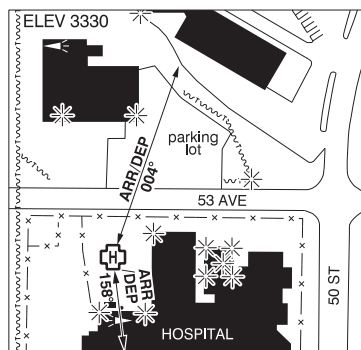
Class	Name	Floor	Ceiling
B	Edmonton, AB a) [CAE]	12500MSL	18000MSL
E	T652 Fixed RNAV Route	2200AGL	18000MSL
E	V306 VHF/UHF Airway	2200AGL	18000MSL

NEAREST AERODROMES & DISTANCE FROM OPERATION

ROCKY MOUNTAIN HOUSE (HEALTH CTR) (CEU4 - HELIPORT - Cert)	Lat: 52.379	Long: -114.921	3.373KM	1.821NM	N
ROCKY MOUNTAIN HOUSE (CYRM - AERODROME - Reg)	Lat: 52.429	Long: -114.904	8.915KM	4.814NM	N
AHLSTROM (CAM4 - AERODROME/HELIPORT - Reg)	Lat: 52.346	Long: -114.667	16.361KM	8.834NM	E

ROCKY MOUNTAIN HOUSE (HEALTH CTR) AB (Heli)

CEU4



REF	N52 22 44 W114 55 15 15°E (2013) UTC-7(6) Elev 3330' A5015
OPR	Alberta Health Services 888-999-3770 Cert NVIS OPS AUTH PPR
FLT PLN	
 FC	Edmonton 866-WXBRIEF (Toll free within Canada) or 866-541-4102 (Toll free within Canada & USA)
 ACC	Edmonton IFR 888-358-7526
HELI DATA	FATO 86' dia non-supporting TLOF 57' dia CONC Safety Area 115' dia Elevated heli 17,000 lbs Max heli overall length 57.4' (CAR 602.96)
LIGHTING	RY(ME) Yellow LED
COMM	
 MF	Rocky Mountain House tfc 122.8 5NM centered on Rocky Mountain House A/D 3NM N 6300 ASL (CAR 602.98)
PRO	Arr/dep 004° fr heli, slope 6% (H3), day/night use (CAR 602.96). Arr/dep 158° fr heli (H1), NVIS rqrd for night use (CAR 602.96).
CAUTION	Unlgt'd p-lines aprx 150' NW thru 400' SW of heli and aprx 225' NNE of heli. Unlgt'd lamp post aprx 160' S of heli, 26' AAE.

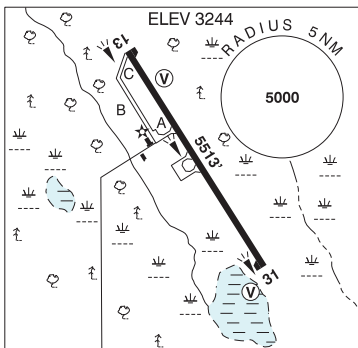
ALBERTA

AERODROME / FACILITY DIRECTORY

ROCKY MOUNTAIN HOUSE AB

CYRM

REF	N52 25 47 W114 54 15 3NNE 15°E (2014) UTC-7(6) Elev 3244' A5015 LO2 HI3 CAP
OPR	Town 403-845-4742 Reg
PF	B-7,8 C-1,2,3,4,5,6
FLT PLN	
FIC	Edmonton 866-WXBRIEF (Toll free within Canada) or 866-541-4102 (Toll free within Canada & USA)
ACC	Edmonton IFR 888-358-7526
WX	AUTO (see COMM) WxCam
SERVICES	
FUEL	100LL, JA (FSII avbl) Vertical Extreme Fuels 403-819-7285
S	1,4,5,6
RWY DATA	Rwy 13(132°)/31(312°) 5513x100 ASPH AGN IIIA
RCR	Opr CRFI Maint avbl 15-23Z† Mon-Fri exc hols O/T 2 hrs PN, call out chg may apply.
LIGHTING	13-(TE ME) V2, 31-(TE ME) V2 ARCAL-122.8 type K
COMM	
MF	tfc 122.8 5NM 6300 ASL (CAR 602.98)
PAL	Edmonton Ctr 134.3
AUTO	131.975
NAV	
VOR/DME	YRM 114.3 Ch 90 N52 30 08 W115 19 25 (3543')
CAUTION	Extv aerobatic activity overhead the aprt extending to 1NM E of rwy, sfc to 8000 ASL. Wildlife may be on or in vic rwy. Water bomber activity at or in vic of A/D Apr thru Sep. No line of sight btwn opposing rwy thlds



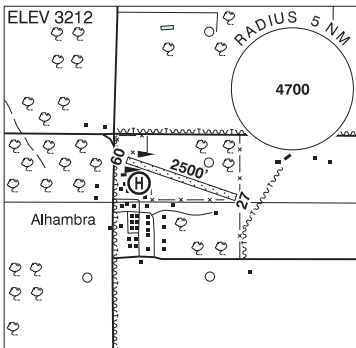
ALBERTA

AERODROME / FACILITY DIRECTORY

ALHAMBRA / AHLSTROM AB

CAM4

REF	N52 20 45 W114 40 02 Adj NE 15°E (2012) UTC-7(6) Elev 3212' A5005 A5015
OPR	Ahlstrom Air Ltd 403-729-3958 Reg
FLT PLN	FIC Edmonton 866-WXBRIEF (Toll free within Canada) or 866-541-4102 (Toll free within Canada & USA)
RWY DATA	Rwy 09(094°)/27(274°) 2500x60 GRASS
RCR	Opr Ltd win maint
HELI DATA	50' x 66' concrete
COMM	ATF tfc 122.8 4NM 6200 ASL



CAUTION Marked p-line across apch Rwy 09 running N/S aprx 18 AGL, aprx 250' W Thld 09. Unmarked p-line running SW/NE aprx 18 AGL, aprx 600' ESE Thld 27.