

---

# FLIGHT PLAN & SITE SURVEY

---

A 41-5378 MORINVILLE RADIO CONTROL FLYERS-  
STREETER AERODOME

May 22, 2026



## IMPORTANT NOTICE

Please ensure you have received all required authorizations prior to flight. This Site Survey was created using RPAS Wilco. The user accepts all responsibility for the accuracy of the information.

Terms & Conditions: [rpaswilco.com/#tnc](https://rpaswilco.com/#tnc)

# Mission Information

A 41-5378 MORINVILLE RADIO CONTROL FLYERS- STREETER AERODOME

## FLIGHT DETAILS

Reference No:	<b>MAAC-41-5378</b>
Project Name:	<b>MORINVILLE RADIO CONTROL FLYERS</b>
Pilot Name:	<b>MAAC</b>
Pilot Certificate:	
Mission Type:	<b>VLOS</b>
Flight Start:	<b>May 22, 2026 08:57 PM</b>
Flight End:	<b>May 22, 2026 09:57 PM</b>

## LOCATION DETAILS

Flight Address:	<b>STREETER AERODOME</b>
Latitude:	<b>53° 46' 50.16" N ( 53.781 )</b>
Longitude:	<b>113° 44' 50.80" W ( -113.747 )</b>
Field Elevation:	<b>2316 ft MSL</b>
Altitude / Radius:	<b>400 ft / 926 m ( 0.5 nm )</b>
Classification:	<b>UNCONTROLLED</b>
FIR / Contact:	<b>CZEG / 780-890-8397</b>

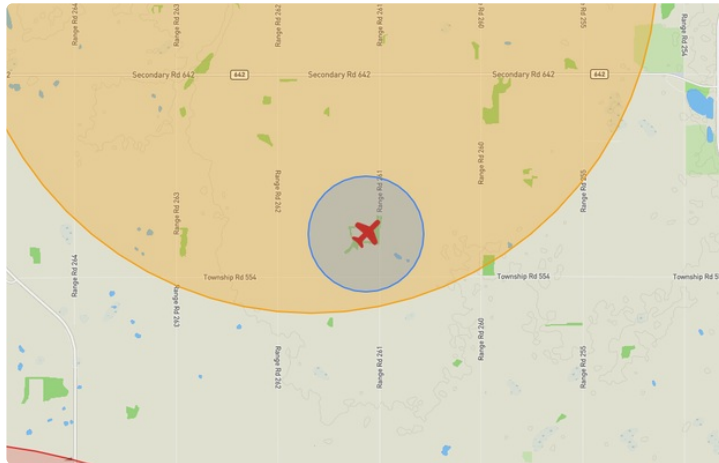
## REPORT CONTENTS

Site Survey • Obstacles (if available) • Nearby Aerodromes • Canadian Aviation Regulations • GFA • Aerodrome Supplements • METAR & TAF • NOTAMs • CFS





# Flight Map & MODEL Details

MISSION LOCATION SURVEY

## FLIGHT AREA MAP



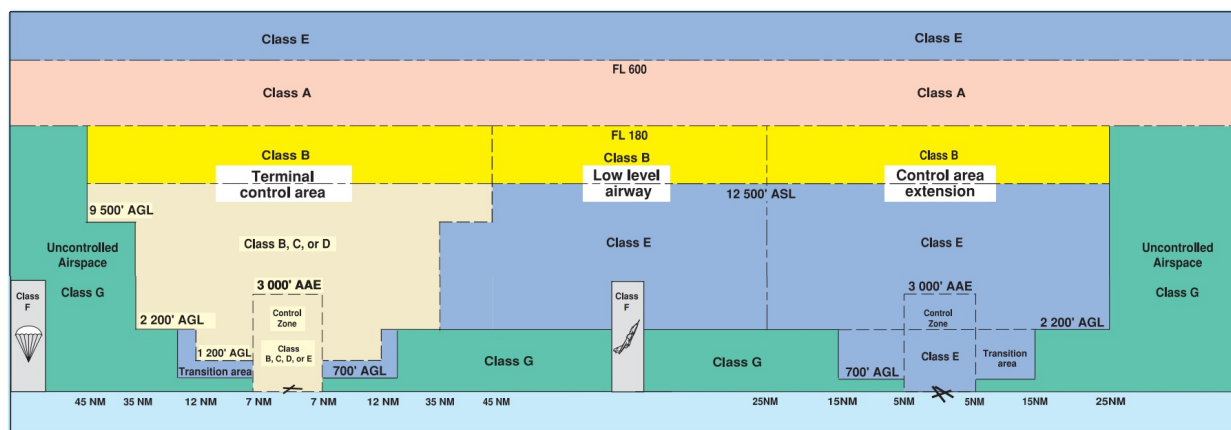
## MISSION LOCATION DETAILS

ROLE	LATITUDE	LONGITUDE
 MODEL	53° 46' 50.16" N 53.781	113° 44' 50.80" W -113.747
 Pilot		
 Payload Op.		
 Observer		

# Airspace Classification

MISSION LOCATION SURVEY

## AIRSPACE MAP



## OVERLYING AIRSPACES

Class	Name	Floor	Ceiling
B	Edmonton, AB a) [CAE]	12500MSL	18000MSL
E	T682 Fixed RNAV Route	2200AGL	18000MSL
B	Edmonton, AB a) [TCA]	12500MSL	18000MSL
C	Edmonton, AB b) [TCA]	9500MSL	12500MSL
C	Edmonton, AB c) [TCA]	7000AGL	9500MSL
C	Edmonton, AB d) [TCA]	4600AGL	7000MSL
E	T639 Fixed RNAV Route	2200AGL	18000MSL
D	Villeneuve, AB [CZ]	SFC	4600MSL
E	Edmonton, AB c) [TA]	3000AGL	4100MSL
C	Edmonton, AB e) [TCA]	4100AGL	18000MSL
E	Edmonton, AB a) [TA]	3000AGL	18000MSL
C	Edmonton, AB g) [TCA]	3400AGL	4600MSL
E	Namao, AB (Heliport) [CZ]	SFC	4100MSL
F	CYR232 NAMAQ, AB	SFC	3000MSL
E	Edmonton, AB e) [TA]	4600AGL	7000MSL
E	T747 Fixed RNAV Route	2200AGL	18000MSL

## NEAREST AERODROMES & DISTANCE FROM OPERATION

MORINVILLE (CURRIE FIELD) (CCF6 - AERODROME - Reg)	Lat: 53.819	Long: -113.761	4.408KM	2.38NM	N
MORINVILLE (MIKE'S FIELD) (CMN6 - AERODROME - Reg)	Lat: 53.837	Long: -113.563	13.616KM	7.352NM	NE
VILLENEUVE (CZVL - AERODROME - Reg)	Lat: 53.668	Long: -113.852	14.287KM	7.714NM	SW

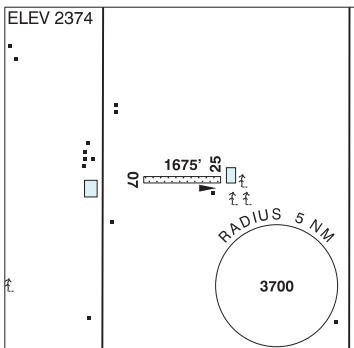
ALBERTA

AERODROME / FACILITY DIRECTORY

**EDMONTON / MORINVILLE (CURRIE FIELD) AB**

CCF6

<b>REF</b>	N53 49 11 W113 45 39 4WNW 15°E (2012) UTC-7(6) Elev 2374' VTA A5015
<b>OPR</b>	Scott Currie 780-918-5242 Reg
<b>PF</b>	B-1 C-2,3,4,5
<b>FLT PLN</b>	<b>FIC</b> Edmonton 866-WXBRIEF (Toll free within Canada) or 866-541-4102 (Toll free within Canada & USA)
<b>RWY DATA</b>	Rwy 07(074°)/25(254°) 1675x 80 GRASS
<b>RCR</b>	Opr Ltd win maint
<b>COMM</b>	<b>ATF</b> tfc 123.2 5NM 4600 ASL
<b>PRO</b>	Edmonton Intl Class C airspace 4600 ASL and above overlies A/D. TRANSPONDER MANDATORY - Acft operating in Edmonton Class C require a discrete transponder code which may be obtained by filing a fit pln or ctc 888-358-7526 at least 30 min prior to entering.
<b>CAUTION</b>	Single p-line W of area. Model acft activity Apr 01-Oct 30.



**ALBERTA**

**AERODROME / FACILITY DIRECTORY**

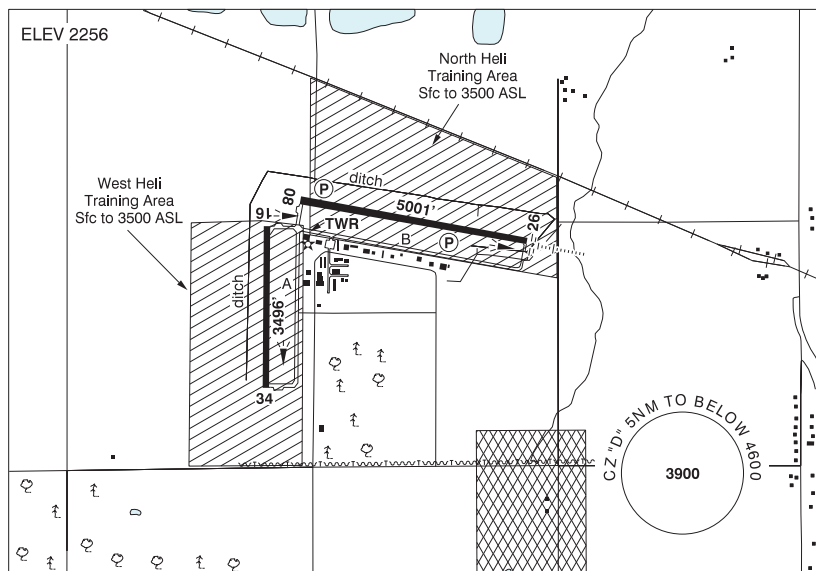
**EDMONTON / MORINVILLE (MIKE'S FIELD) AB**

**CMN6**

<b>REF</b>	N53 50 13 W113 33 48 4NE 15°E (2012) UTC-7(6) Elev 2302' VTA A5015	
<b>OPR</b>	Michael Poworoznik 780-718-6240 Reg PPR	
<b>FLT PLN</b>		
<b>FIC</b>	Edmonton 866-WXBRIEF (Toll free within Canada) or 866-541-4102 (Toll free within Canada & USA)	
<b>ACC</b>	Edmonton IFR 888-358-7526	
<b>RWY DATA</b>	Rwy 16(163°)/34(343°) 2336x75 GRASS	
<b>RCR</b>	Opr No win maint	
<b>COMM</b>		
<b>ATF</b>	tfc 123.2 2NM 4600 ASL	
<b>PRO</b>	For VFR routes see Edmonton VTPC or as directed by ATC. Edmonton Intl Class C airspace 4600 ASL and above overlies A/D. TRANSPONDER MANDATORY - Acft operating in Edmonton Class C require a discrete transponder code which may be obtained by filing a flt pln or ctc 888-358-7526 at least 30 min prior to entering.	
<b>CAUTION</b>	P-line 75' south thld Rwy 34 runs along road 35 AGL	

## EDMONTON / VILLENEUVE AB

CZVL



<b>REF</b>	N53 40 06 W113 51 08 1W 14°E (2020) UTC-7(6) Elev 2256' VTA A5015 LO1 LO2 HI3 T1 CAP
<b>OPR</b>	Edmonton Regional Airports Authority 780-890-8327 H24 Cert
<b>PF</b>	A-1 avbl 1430-2300Z† D-2,3,4,5,6
<b>CUST</b>	AOE/15 (Cost Recovery) 888-226-7277 14-22Z†
<b>FLT PLN</b>	
<b>FIC</b>	Edmonton 866-WXBRIEF (Toll free within Canada) or 866-541-4102 (Toll free within Canada & USA)
<b>ACC</b>	Edmonton IFR 888-358-7526
<b>WX</b>	METAR AUTO H24 (see COMM) TAF H24, issue times: 00, 06, 12, 18Z WxCam
<b>SERVICES</b>	
<b>FUEL</b>	100LL, JA-1 (FSII avbl), SP Villeneuve Aviation Centre Inc. 780-460-0470 Mon-Fri 14-01Z†, Sat 15-23Z†, Sun 17-21Z† O/T call out chgs apply. Fuel truck avbl. Automated credit card processing cardlock. Cardinal Aviation Centre FBO 780-459-0952/780-446-5949 Mon-Sat 15-23Z† Sun 20-23Z† O/T 780-446-5949. HQ Fuels Ltd. Automated credit card processing. Fuel truck avbl 888-451-4621
<b>OIL</b>	All
<b>S</b>	1,2,3,4,5,6

## ALBERTA

## AERODROME / FACILITY DIRECTORY

## EDMONTON / VILLENEUVE AB (Cont'd)

CZVL

<b>RWY DATA</b>	Rwy 08(086°)/26(266°) 5001x100 ASPH Rwy 08 down 0.42% Rwy 16(166°)/34(346°) 3496x100 ASPH RESA: 08/26 295'
<b>RWY CERT</b>	Rwy 08/26 AGN IIIB Rwy 16/34 AGN II
<b>TWY CERT</b>	Twy: A,B AGN II
<b>APRON</b>	Apron II PPR fr tenant or opr for access. Bcst intentions on 123.45. Apron II rstd to acft with wingspans less than 59.1'.
<b>RCR</b>	Opr Ltd hrs, 3 hrs PN. Call out fee may be levied. CRFI, PCN.
<b>LIGHTING</b>	08-(TE HI) P2, 26-AN(TE HI) P2, 16-(TE ME), 34-(TE ME) ARCAL-118.8 type K
<b>COMM</b>	<p><b>ATIS</b> 128.35 15-04Z‡</p> <p><b>GND</b> Villeneuve 120.8 15-04Z‡</p> <p><b>TWR</b> Villeneuve 118.8 (V) 15-04Z‡ (emerg only 780-458-5828)</p> <p><b>ATF</b> tfc 118.8 04-15Z‡ 5NM to below 4600 ASL</p> <p><b>ARR</b> Edmonton Tml 119.5</p> <p><b>DEP</b> Edmonton Tml 119.5</p> <p><b>VFR ADV</b> Edmonton Tml 127.4 in Class C</p> <p><b>AWOS</b> 128.35 04-15Z‡</p>
<b>NAV</b>	<p><b>DME</b> IVL 111.95 Ch 56(Y) N53 40 23 W113 50 36 (2251')</p> <p><b>ILS</b> IVL 111.95 (Rwy 26) RVR</p>
<b>PRO</b>	<p>Rgt hand circuits Rwy 16 &amp; 26 (CAR 602.96). Pilots to close VFR flt plans with Edmonton FIC (phone) when practicable or request closure fr ATC. For VFR routes see Edmonton VTPC or as directed by ATC. Edmonton Class C Airspace overlies CZ. TRANSPONDER MANDATORY - Acft operating in Edmonton Class C require a discrete transponder code which may be obtained by filing a flt plan or ctc 888-358-7526 at least 30 min prior to entering. IFR Training Restriction: PPR for IFR tng flights. Ctc ATC 888-358-7526 no more than 24 hrs prior to ETD.</p> <p><b>HELI OPS:</b> Use Heli Training Area "NORTH" or "WEST" sfc to 3500 ASL. Remain North of Taxiway Bravo while using North Heli training area. Remain West of Taxiway Alpha while using West Heli training area.</p>
<b>CAUTION</b>	Deer in vic of rwys. Aerobatics may be in progress over aprt 5800 ASL & below. Rising terrain immediately S of thld Rwy 34. Avoid flt over noise sensitive areas.