

---

# FLIGHT PLAN & SITE SURVEY

---

A 853-5446 SOUTHERN ALBERTA CONTROL LINE  
ASSOCIATION- LAKE PLACID PLAYING FIELDS

May 22, 2026



## IMPORTANT NOTICE

Please ensure you have received all required authorizations prior to flight. This Site Survey was created using RPAS Wilco. The user accepts all responsibility for the accuracy of the information.

Terms & Conditions: [rpswilco.com/#tnc](https://rpswilco.com/#tnc)

# Mission Information

A 853-5446 SOUTHERN ALBERTA CONTROLINE ASSOCIATION- LAKE PLACID PLAYING FIELDS

## FLIGHT DETAILS

Reference No:	<b>MAAC-853-5446</b>
Project Name:	<b>SOUTHERN ALBERTA CONTROLINE ASSOCIATION</b>
Pilot Name:	<b>MAAC</b>
Pilot Certificate:	
Mission Type:	<b>VLOS</b>
Flight Start:	<b>May 22, 2026 08:58 PM</b>
Flight End:	<b>May 22, 2026 09:58 PM</b>

## LOCATION DETAILS

Flight Address:	<b>LAKE PLACID PLAYING FIELDS</b>
Latitude:	<b>50° 56' 8.40" N ( 50.936 )</b>
Longitude:	<b>114° 3' 40.30" W ( -114.061 )</b>
Field Elevation:	<b>3425 ft MSL</b>
Altitude / Radius:	<b>400 ft / 926 m ( 0.5 nm )</b>
Classification:	<b>UNCONTROLLED</b>
FIR / Contact:	<b>CZEG / 780-890-8397</b>

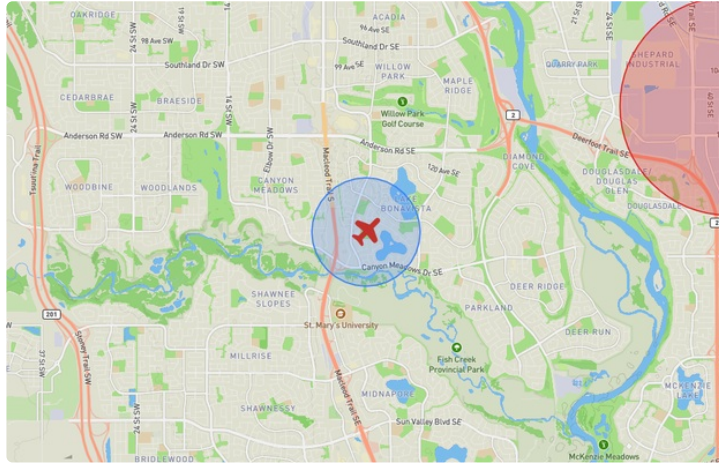
## REPORT CONTENTS

Site Survey • Obstacles (if available) • Nearby Aerodromes • Canadian Aviation Regulations • GFA • Aerodrome Supplements • METAR & TAF • NOTAMs • CFS





# Flight Map & MODEL Details

MISSION LOCATION SURVEY

## FLIGHT AREA MAP



## MISSION LOCATION DETAILS

ROLE	LATITUDE	LONGITUDE
 MODEL	50° 56' 8.40" N 50.936	114° 3' 40.30" W -114.061
 Pilot		
 Payload Op.		
 Observer		

# Airspace Classification

MISSION LOCATION SURVEY

## AIRSPACE MAP



## OVERLYING AIRSPACES

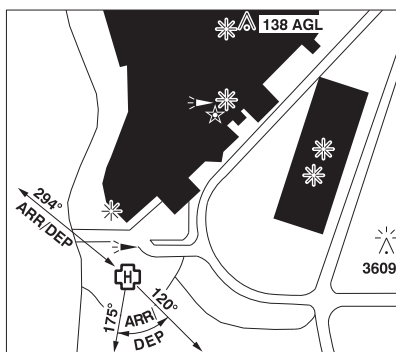
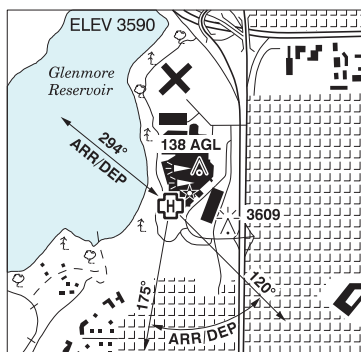
Class	Name	Floor	Ceiling
E	Calgary, AB a) [CAE]	5800MSL	18000MSL
E	V112 VHF/UHF Airway	2200AGL	18000MSL
C	Calgary, AB d) [TCA]	4800AGL	18000MSL
C	Calgary, AB c) [TCA]	5500AGL	8000MSL
C	Springbank, AB [CZ]	SFC	5500MSL
B	Calgary, AB a) [TCA]	12500MSL	18000MSL
C	Calgary, AB b) [TCA]	8000MSL	12500MSL
E	V306 VHF/UHF Airway	2200AGL	18000MSL
C	Calgary Intl, AB [CZ]	SFC	3000GND
E	T727 Fixed RNAV Route	2200AGL	18000MSL
F	CYA263 (S) BLACK DIAMOND, AB	SFC	8000MSL

## NEAREST AERODROMES & DISTANCE FROM OPERATION

CALGARY (ROCKYVIEW HOSPITAL) (CEM2 - HELIPORT - Cert)	Lat: 50.988	Long: -114.098	6.372KM	3.441NM	NW
CALGARY (EASTLAKE) (CEL9 - HELIPORT - Cert)	Lat: 50.955	Long: -113.973	6.557KM	3.54NM	E
CALGARY (AERIAL RECON) (CAR3 - HELIPORT - Reg)	Lat: 50.868	Long: -114.138	9.251KM	4.995NM	SW

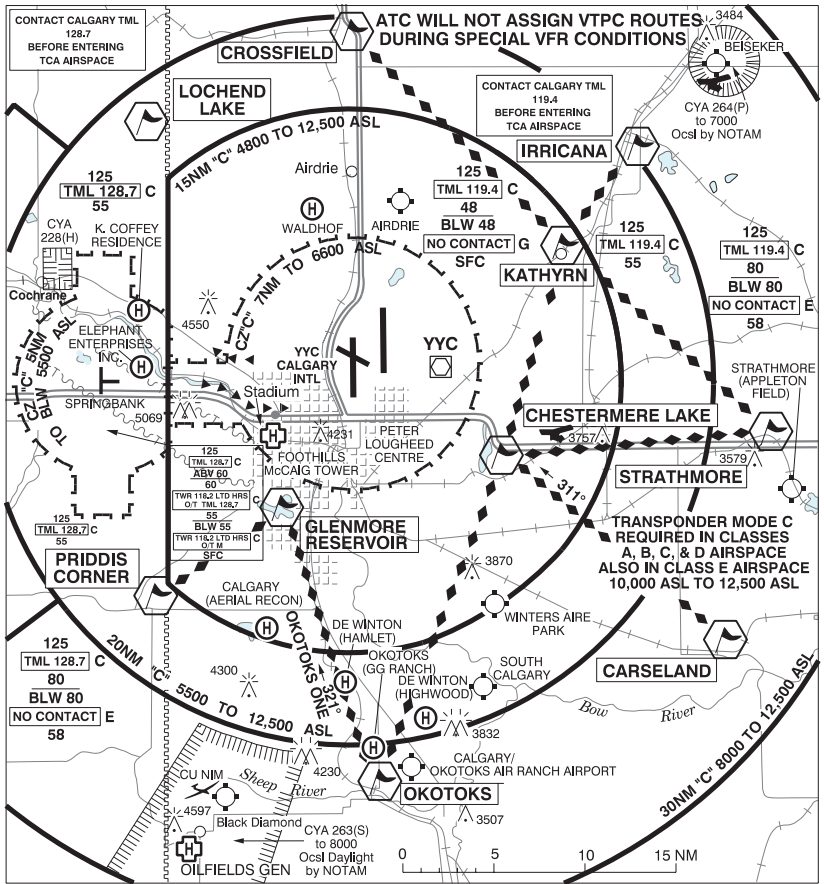
**CALGARY (ROCKYVIEW HOSP) AB (Heli)**

**CEM2**



<b>REF</b>	N50 59 18 W114 05 54 15°E (2013) UTC-7(6) Elev 3590' VTA A5005
<b>OPR</b>	Alberta Health Services 403-943-3000 Cert NVIS OPS AUTH PPR
<b>FLT PLN</b>	<p><b>FIC</b> Edmonton 866-WXBRIEF (Toll free within Canada) or 866-541-4102 (Toll free within Canada &amp; USA)</p> <p><b>ACC</b> Edmonton IFR 888-358-7526</p>
<b>HELI DATA</b>	FATO/TLOF 86' dia CONC Safety Area 115' dia
<b>LIGHTING</b>	RW(ME) PN
<b>COMM</b>	
<b>VFR ADV</b>	119.4
<b>PRO</b>	Arr/dep 120° to 175° fr heli, slope 16% (H2) and arr/dep 294° fr heli, slope 16% (H2).

**CALGARY VFR TERMINAL PROCEDURES CHART**



ALBERTA

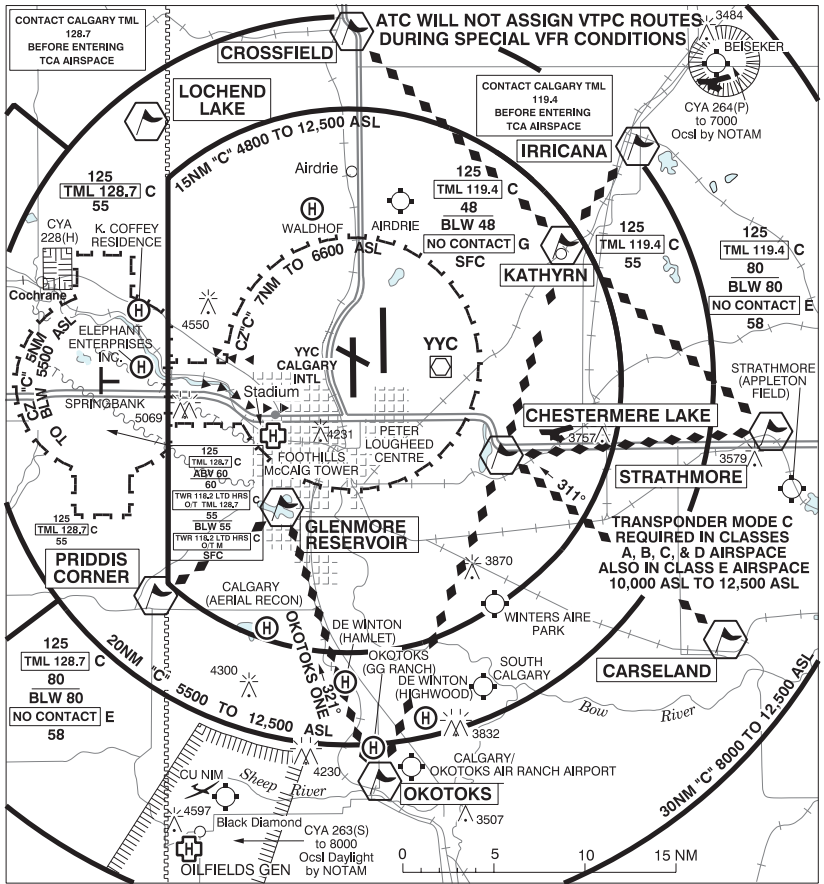
AERODROME / FACILITY DIRECTORY

**CALGARY (EASTLAKE) AB (Heli)**

**CEL9**

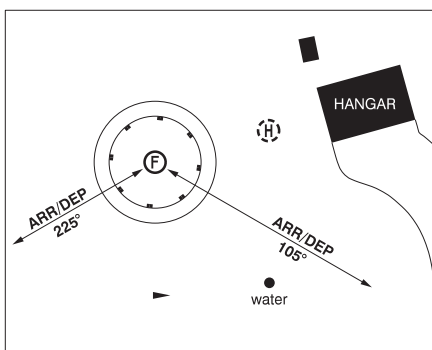
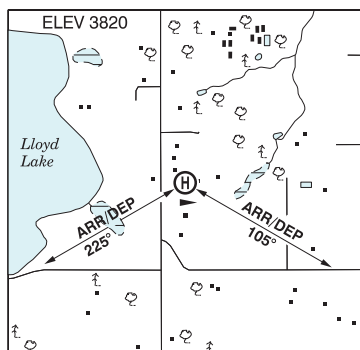
<b>REF</b>	N50 57 18 W113 58 22 Adj 15°E (2013) UTC-7(6) Elev 3418' VTA A5005		ELEV 3418
<b>OPR</b>	Al Morrison 403-540-1125 Cert PPR		
<b>PF</b>	A-1 C-2,3,4,5,6		
<b>FLT PLN</b>			
<b>FIC</b>	Edmonton 866-WXBRIEF (Toll free within Canada) or 866-541-4102 (Toll free within Canada & USA)		
<b>ACC</b>	Edmonton IFR 888-358-7526		
<b>HELI DATA</b>	FATO 54' x 54' non-supporting TLOF 45' x 45' CONC Safety Area 85' x 85' 5,000 lbs		
<b>RCR</b>	Opr 14-03Z†		
<b>LIGHTING</b>	RF(LO)		
<b>COMM</b>			
<b>VFR ADV</b>	119.4		
<b>PRO</b>	Arr/dep 075° to 120° fr heli slope 16% (H3), day/night use. Arr/dep 255° fr heli, slope 8% (H3), day/night use. Avoid Calgary Animal Shelter Adj NE		
<b>CAUTION</b>	Avoid p-line to W of heli along N-S road when using 255° path. Lgtd twr 3890 ASL (465 AGL) 0.7NM SSE.		

**CALGARY VFR TERMINAL PROCEDURES CHART**



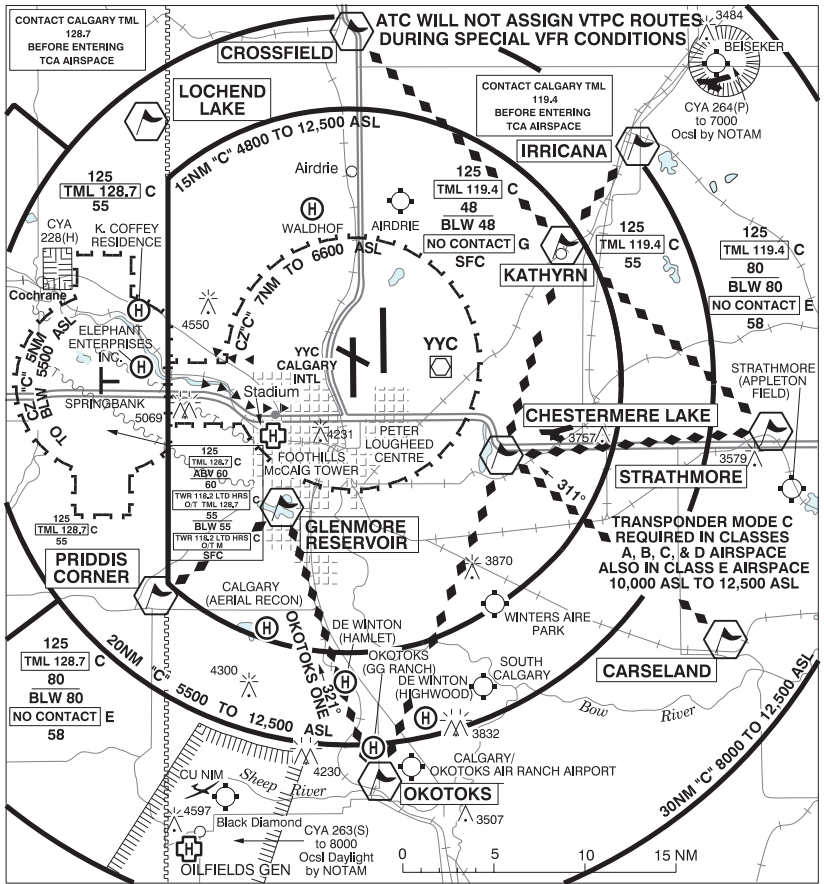
**CALGARY (AERIAL RECON) AB (Heli)**

**CAR3**



<b>REF</b>	N50 52 05 W114 08 17 11S 15°E (2014) UTC-7(6) Elev 3820' VTA A5005
<b>OPR</b>	Eric Gould 403-508-1700 Reg PPR
<b>PF</b>	A-1 C-2,3,4,5,6
<b>FLT PLN</b>	
<b>    FIC</b>	Edmonton 866-WXBRIEF (Toll free within Canada) or 866-541-4102 (Toll free within Canada & USA)
<b>    ACC</b>	Edmonton IFR 888-358-7526
<b>HELI DATA</b>	FATO 64' dia GRASS TLOF 51' dia CONC Safety Area 85' dia Max heli overall length 42.7'
<b>    RCR</b>	Opr
<b>COMM</b>	
<b>    ATF</b>	tfc 122.8 5NM 4800 ASL
<b>PRO</b>	Arr/dep 225° and 105° fr heli, slope 8% (H3).

**CALGARY VFR TERMINAL PROCEDURES CHART**



NAME	IDENT	LAT/LONG
CARCELAND	VCCRL	N50° 51' 15" W113° 28' 00"
CHESTERMERE LAKE	VCCMR	N51° 01' 30" W113° 49' 00"
CROSSFIELD	VCCRF	N51° 26' 00" W114° 02' 00"
GLENMORE RESERVOIR	VCGLM	N50° 59' 00" W114° 07' 30"
IRRICANA	VCIRR	N51° 19' 24" W113° 36' 12"
KATHYRN	VCKTH	N51° 13' 00" W113° 42' 00"
LOCHEND LAKE	VCLEL	N51° 20' 00" W114° 19' 12"
OKOTOKS	VCOKO	N50° 43' 30" W113° 58' 30"
PRIDDIS CORNER	VCPDS	N50° 53' 30" W114° 17' 45"
STRATHMORE	VCSRSM	N51° 02' 30" W113° 23' 30"