
FLIGHT PLAN & SITE SURVEY

C 53-5589 BULKLEY VALLEY R/C FLYERS- Muheim Memorial
School

May 22, 2026



IMPORTANT NOTICE

Please ensure you have received all required authorizations prior to flight. This Site Survey was created using RPAS Wilco. The user accepts all responsibility for the accuracy of the information.

Terms & Conditions: rpswilco.com/#tnc

Mission Information

C 53-5589 BULKLEY VALLEY R/C FLYERS- MUHEIM MEMORIAL SCHOOL

FLIGHT DETAILS

Reference No:	MAAC-53-5589
Project Name:	BULKLEY VALLEY R/C FLYERS
Pilot Name:	MAAC
Pilot Certificate:	
Mission Type:	VLOS
Flight Start:	May 22, 2026 08:00 PM
Flight End:	May 22, 2026 09:00 PM

LOCATION DETAILS

Flight Address:	Muheim Memorial School
Latitude:	54° 46' 43.51" N (54.779)
Longitude:	127° 10' 4.35" W (-127.168)
Field Elevation:	1621 ft MSL
Altitude / Radius:	400 ft / 926 m (0.5 nm)
Classification:	UNCONTROLLED
FIR / Contact:	CZVR / 604-586-4500

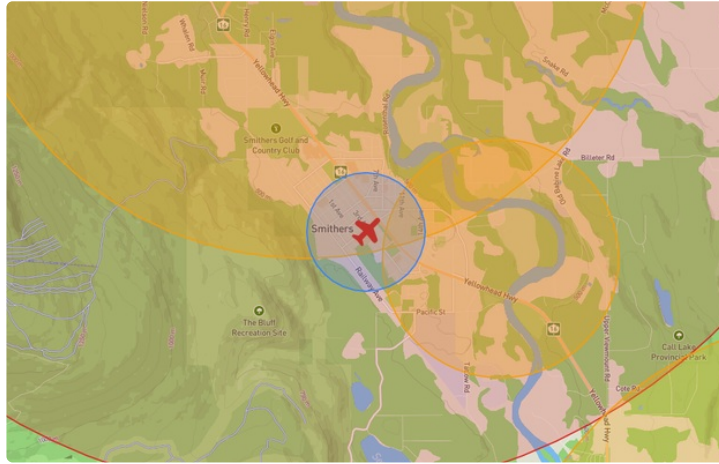
REPORT CONTENTS

Site Survey • Obstacles (if available) • Nearby Aerodromes • Canadian Aviation Regulations • GFA • Aerodrome Supplements • METAR & TAF • NOTAMs • CFS





Flight Map & MODEL Details

MISSION LOCATION SURVEY

FLIGHT AREA MAP



MISSION LOCATION DETAILS

ROLE	LATITUDE	LONGITUDE
 MODEL	54° 46' 43.51" N 54.779	127° 10' 4.35" W -127.168
 Pilot		
 Payload Op.		
 Observer		

Airspace Classification

MISSION LOCATION SURVEY

AIRSPACE MAP



OVERLYING AIRSPACES

Class	Name	Floor	Ceiling
E	Smithers, BC [TA]	700AGL	18000MSL
E	Smithers, BC [CZ]	SFC	3000GND
E	Smithers, BC [CAE]	2200AGL	18000MSL
E	T664 Fixed RNAV Route	2200AGL	18000MSL
F	CYA159 (S) SMITHERS, BC	12500MSL	999STD

NEAREST AERODROMES & DISTANCE FROM OPERATION

SMITHERS (CYD - AERODROME - Reg)	Lat: 54.825	Long: -127.183	5.261KM	2.841NM	N
SMITHERS (CANADIAN) (CAA6 - HELIPOINT - Reg)	Lat: 54.775	Long: -127.135	2.149KM	1.16NM	E
TYHEE LAKE (CAX8 - WATERDROME - Reg)	Lat: 54.717	Long: -127.05	10.242KM	5.53NM	SE

BRITISH COLUMBIA

AERODROME / FACILITY DIRECTORY

SMITHERS BC

CYJD



REF	N54 49 31 W127 10 58 2N 17°E (2024) UTC-8(7) Elev 1717' A5013 LO1 HI2 HI3 CAP
OPR	Smithers Regional Airport 250-847-3664/0534 O/T 250-877-1858 Fax 250-847-2605 Cert 1500-0100Z‡ Apr-Oct 1500-0330Z‡ Nov-Mar
PF	A-1,2(ltd hrs),3,6 C-2,4,5
FLT PLN	
FIG	Kamloops 866-WXBRIEF (Toll free within Canada) or 866-541-4101 (Toll free within Canada & USA)
WX	METAR 15-04Z‡ Oct 1-May 31 14-06Z‡ Jun 1-Sep 30 O/T METAR AUTO (see COMM). TAF 14-06Z, issue times: 14, 19, 01Z. WxCam
SERVICES	Call out chg may be levied for one or more svcs
FUEL	100LL, JA-1 (FSII avbl), SP (JA-1 only) 250-847-3414 or 643-1755
OIL	W100 Aeroshell
S	1,2,3,4,5 (ltd), 6 (ltd)
SUP FL	D-ice, HPOX (ltd) (DJ Airside 250-877-1084)
JASU	Elect 28V up to 1500 amps (DJ Airside 250-877-1084)
PVT ADV	Shell Smithers 122.9
RWY DATA	Rwy 15(153°)/33(333°) 7547x150 ASPH Thld 15 displ 260' Thld 33 displ 264'
RWY CERT	Rwy 15/33 AGN IV
TWY CERT	Twy: A, B AGN IIIA
TWY	Twy B no vehicle control.
RCR	Opr Ltd win maint Nov-Mar, ctc opr for hrs of ops O/T 3 hrs PN call out chg may be levied. CRFI, PCN
LIGHTING	15-AO(TE ME) P2, 33-AO(non-std 1411') (TE ME) P2 PAPI limitation/restriction. PAPI Rwy 15 to be used only within 2NM of thld; PAPI Rwy 33 to be used only within 2NM of thld ARCAL-122.3 type K when FSS clsd

BRITISH COLUMBIA

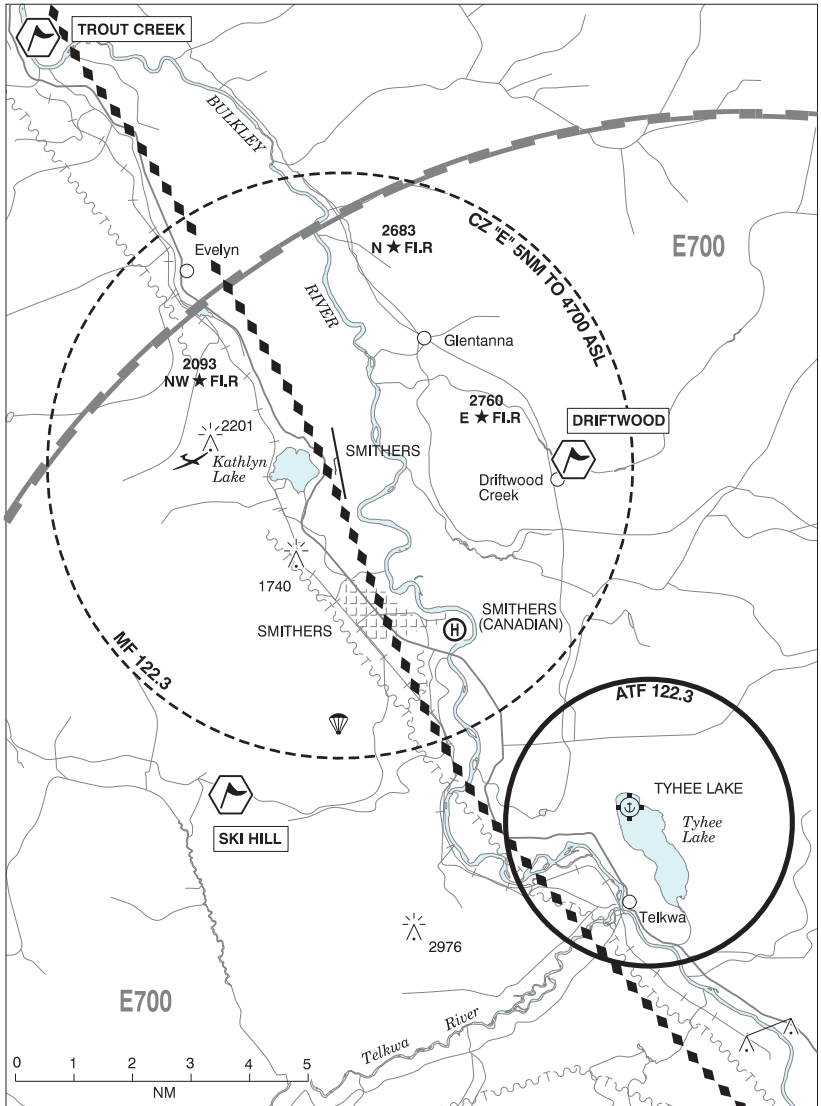
AERODROME / FACILITY DIRECTORY

SMITHERS BC (Cont'd)

CYYD

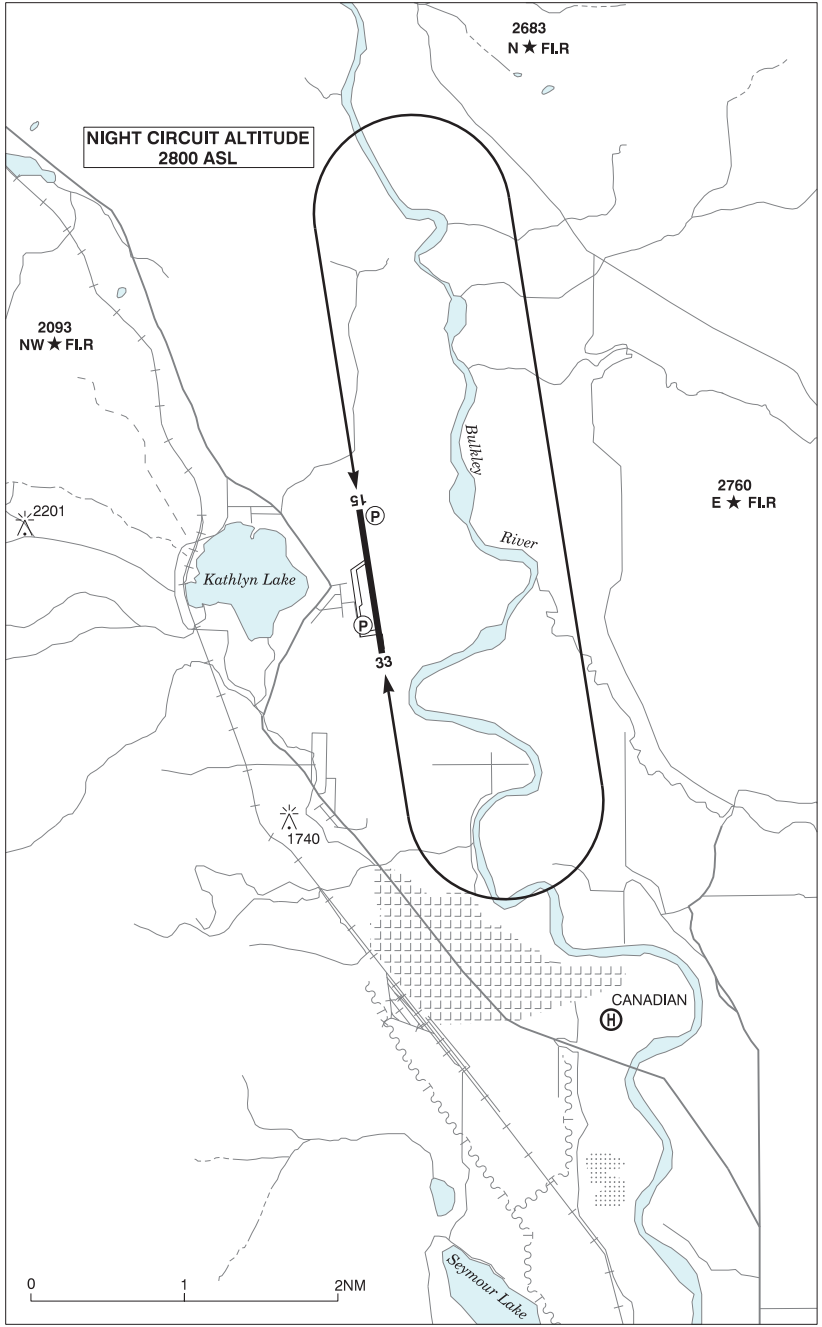
COMM	
RADIO	122.3 PTC avbl (V) 15-04Z† Oct 1-May 31, 14-06Z† Jun 1-Sep 30 (emerg only 250-847-2035).
RCO	Pacific rdo 123.375 (FISE)
MF	rdo 122.3 15-04Z† Oct 1-May 31, 14-06Z† Jun 1-Sep 30 O/T tfc 5NM 4700 ASL (CAR 602.98)
AWOS	128.65 04-15Z† Oct 1-May 31, 06-14Z† Jun 1-Sep 30
NAV	
VOR/DME	HOUSTON YYD 114.7 Ch 94 N54 27 08 W126 39 02 (4184')
PRO	Rgt hand circuits Rwy 33 (CAR 602.96). De-icing/anti-icing activity to be carried out on E edge of apron only. Ngt circuit alt 2800 ASL (1100 AGL) see VTPC.
CAUTION	Soaring activity W of aprt Apr-Oct. Ocsl parachuting aprx 5NM S. Smithers/Tyhee Lake water A/D: MF 122.3 aprx 9NM SE. Ngt ops are not recommended unless all 3 hazard bcns are oprg. Only pilots familiar with lcl terrain should use this aprt dur hrs of darkness. Extv bird activity Apr-Oct. Hi terrain reduces operational length of Rwy 15 and 33 PAPI.

SMITHERS VFR TERMINAL PROCEDURES CHART



NAME	IDENT	LAT/LONG
DRIFTWOOD	VCDWD	N54° 49' 00" W127° 04' 42"
SKI HILL	VCSHL	N54° 46' 06" W127° 15' 12"
TROUT CREEK	VCTRT	N54° 56' 30" W127° 19' 30"

SMITHERS VFR TERMINAL PROCEDURES CHART - NIGHT CIRCUIT PROCEDURE



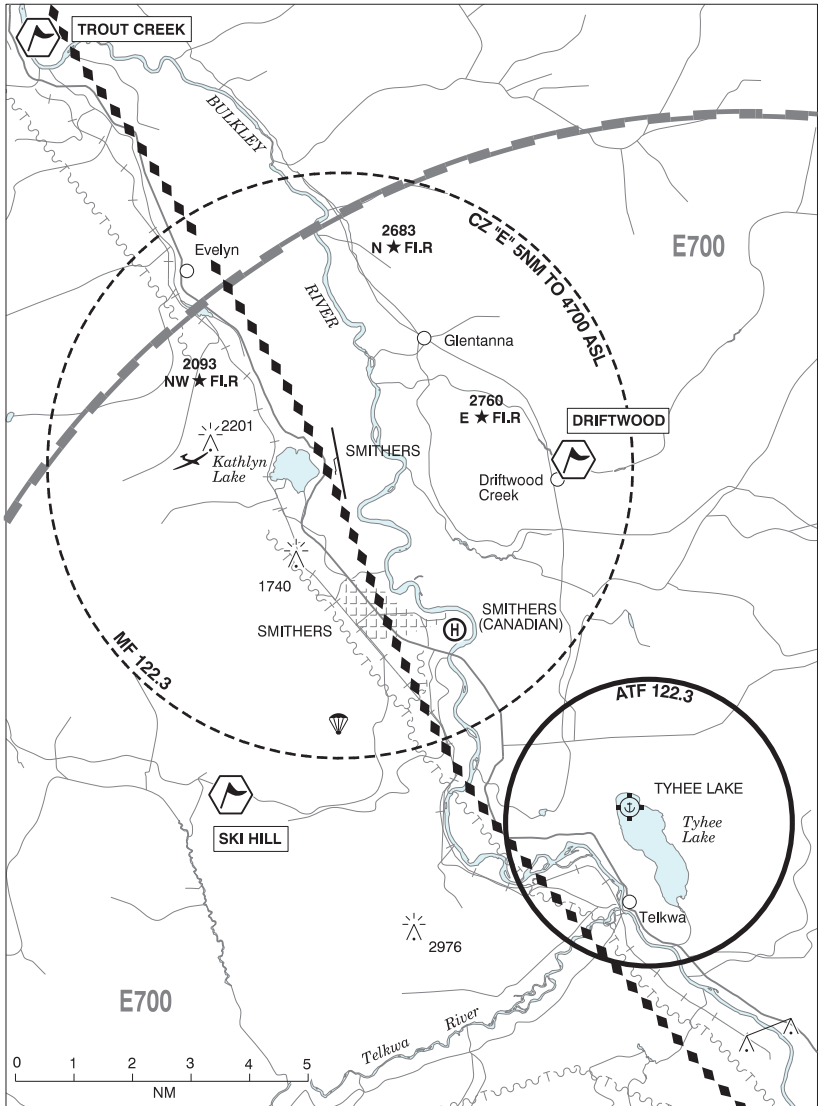
BRITISH COLUMBIA

AERODROME / FACILITY DIRECTORY

SMITHERS (CANADIAN) BC (Heli)**CAA6**

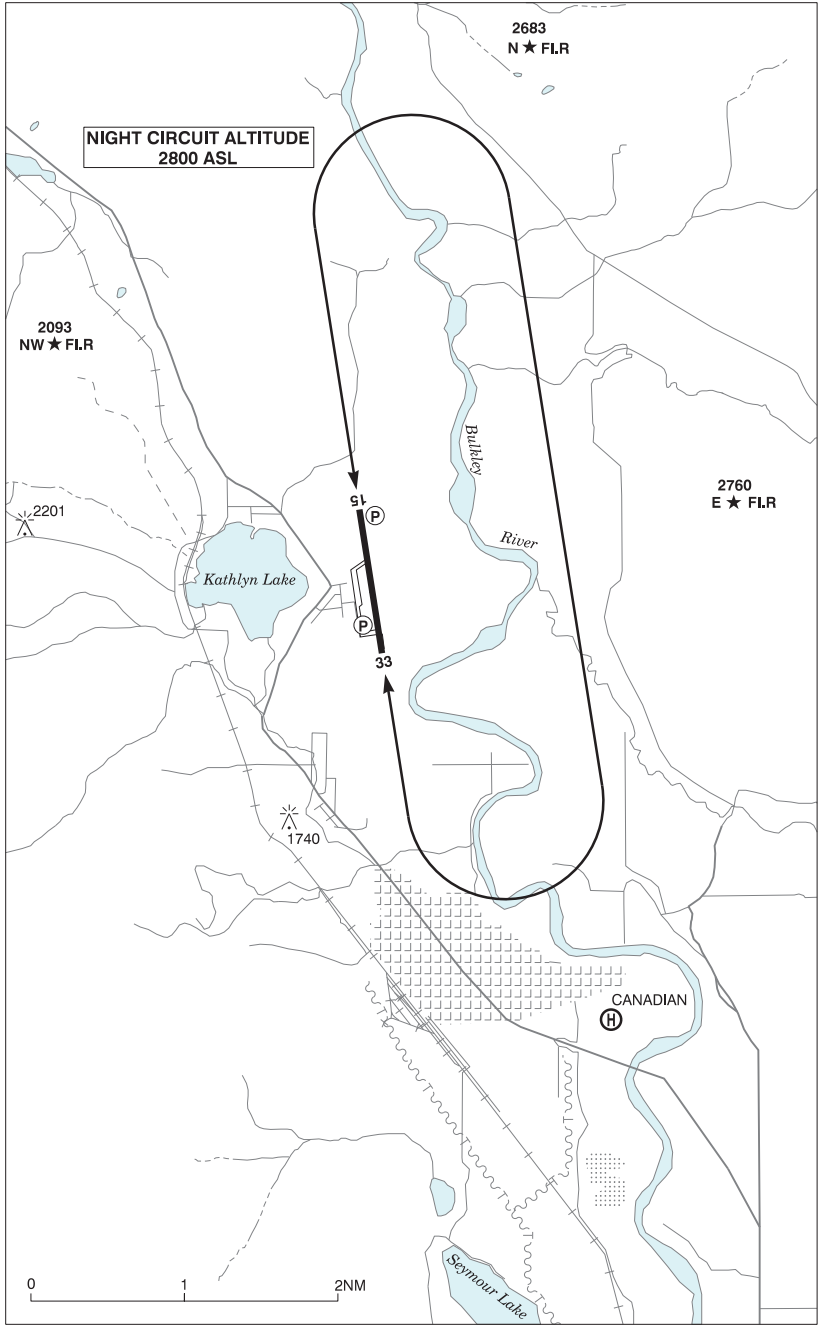
REF	N54 46 30 W127 08 06 19°E (2013) UTC-8(7) Elev 1600' A5013
OPR	Canadian Helicopters Ltd 250-847-9444 Reg PPR
FLT PLN	
FIC	Kamloops 866-WXBRIEF (Toll free within Canada) or 866-541-4101 (Toll free within Canada & USA)
HELI DATA	200' x 200' CONC/GRASS
COMM	
MF	rdo 122.3 15-04Z± (Oct 1-May 31), 14-06Z±(Jun 1-Sep 30) O/T tfc. 5NM centred on Smithers A/D 3.4NM NW 4700 ASL (CAR 602.98)

SMITHERS VFR TERMINAL PROCEDURES CHART



NAME	IDENT	LAT/LONG
DRIFTWOOD	VCDWD	N54° 49' 00" W127° 04' 42"
SKI HILL	VCSHL	N54° 46' 06" W127° 15' 12"
TROUT CREEK	VCTRT	N54° 56' 30" W127° 19' 30"

SMITHERS VFR TERMINAL PROCEDURES CHART - NIGHT CIRCUIT PROCEDURE



CANADA WATER AERODROME SUPPLEMENT

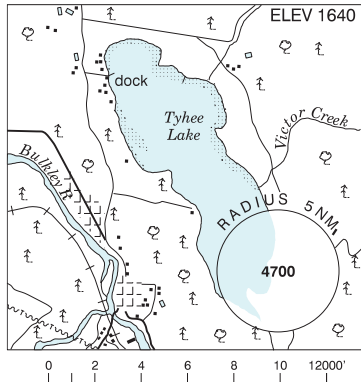
Effective 0901Z 19 March 2026 to 0901Z 18 February 2027

AERODROME/FACILITY DIRECTORY B245

SMITHERS/TYHEE LAKE BC

CAX8

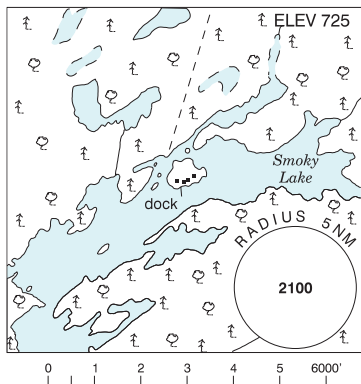
REF	N54 43 W127 03 Adj E 20°E (2012) UTC-8(7) Elev 1640' A5013
OPR	Alpine Lakes Air 250-846-9488 Reg
PF	B-1 C-2 D-3,4,5,6
FLT PLN	FIC Kamloops 866-WXBRIEF (Toll free within Canada) or 866-541-4101 (Toll free within Canada & USA)
SERVICES	PN (Note: Prior notice is applicable to all svcs) S 7
A/D DATA	Open water May-mid Nov. Depth 3' near dock, mud bottom. Skiplanes in win.
COMM	ATF Smithers rdo 122.3 2NM 3200 ASL
NAV	VOR/DME HOUSTON YYD 114.7 Ch 94 N54 27 08 W126 39 02 (4184')



SMOKY LAKE ON

CNS2

REF	N45 51 W80 13 12SW Port Loring 11°W UTC-5(4) Elev 725' A5000 A5001
OPR	Tornado's Canadian Resorts Inc 705-757-2050 Reg PPR
PF	B-5
FLT PLN	FIC London 866-WXBRIEF (Toll free within Canada) or 866-541-4104 (Toll free within Canada & USA)
A/D DATA	Open water May-mid Nov.
COMM	ATF tfc 122.8 5NM 3700 ASL



SNIDERS BAY ON — See GRAVENHURST / SNIDERS BAY