

---

# FLIGHT PLAN & SITE SURVEY

---

A 31-5695 AIRDRIE MODELERS AIRCRAFT SOCIETY- The  
Church of Jesus Christ of Latter-day Saints Gymnasium

May 22, 2026



## IMPORTANT NOTICE

Please ensure you have received all required authorizations prior to flight. This Site Survey was created using RPAS Wilco. The user accepts all responsibility for the accuracy of the information.

Terms & Conditions: [rpswilco.com/#tnc](https://rpswilco.com/#tnc)

# Mission Information

A 31-5695 AIRDRIE MODELERS AIRCRAFT SOCIETY- THE CHURCH OF JESUS CHRIST OF LATTER-DAY SAINTS GYMNASIUM

## FLIGHT DETAILS

Reference No:	<b>MAAC-31-5695</b>
Project Name:	<b>AIRDRIE MODELERS AIRCRAFT SOCIETY</b>
Pilot Name:	<b>MAAC</b>
Pilot Certificate:	
Mission Type:	<b>VLOS</b>
Flight Start:	<b>May 22, 2026 09:02 PM</b>
Flight End:	<b>May 22, 2026 10:02 PM</b>

## LOCATION DETAILS

Flight Address:	<b>The Church of Jesus Christ of Latter-day Saints Gymnasium</b>
Latitude:	<b>51° 6' 46.33" N ( 51.113 )</b>
Longitude:	<b>114° 11' 11.43" W ( -114.187 )</b>
Field Elevation:	<b>3806 ft MSL</b>
Altitude / Radius:	<b>400 ft / 926 m ( 0.5 nm )</b>
Classification:	<b>UNCONTROLLED</b>
FIR / Contact:	<b>CZEG / 780-890-8397</b>

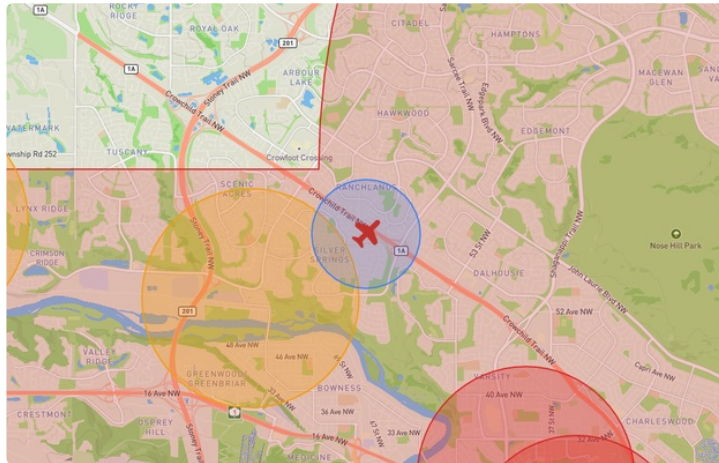
## REPORT CONTENTS

Site Survey • Obstacles (if available) • Nearby Aerodromes • Canadian Aviation Regulations • GFA • Aerodrome Supplements • METAR & TAF • NOTAMs • CFS





# Flight Map & MODEL Details

MISSION LOCATION SURVEY

## FLIGHT AREA MAP



## MISSION LOCATION DETAILS

ROLE	LATITUDE	LONGITUDE
 MODEL	51° 6' 46.33" N 51.113	114° 11' 11.43" W -114.187
 Pilot		
 Payload Op.		
 Observer		

# Airspace Classification

MISSION LOCATION SURVEY

## AIRSPACE MAP



## OVERLYING AIRSPACES

Class	Name	Floor	Ceiling
E	Calgary, AB a) [CAE]	5800MSL	18000MSL
C	Calgary, AB c) [TCA]	5500AGL	8000MSL
C	Calgary, AB d) [TCA]	4800AGL	18000MSL
C	Springbank, AB [CZ]	SFC	5500MSL
B	Calgary, AB a) [TCA]	12500MSL	18000MSL
C	Calgary, AB b) [TCA]	8000MSL	12500MSL
E	V306 VHF/UHF Airway	2200AGL	18000MSL
F	CYA228 (H) CALGARY, AB	SFC	6500MSL
E	T727 Fixed RNAV Route	2200AGL	18000MSL
C	Calgary Intl, AB [CZ]	SFC	3000GND
E	V112 VHF/UHF Airway	2200AGL	18000MSL

## NEAREST AERODROMES & DISTANCE FROM OPERATION

CALGARY (BOW CROW) (CEP2 - HELIPORT - Reg)	Lat: 51.103	Long: -114.215	2.252KM	1.216NM	SW
CALGARY (ALBERTA CHILDREN'S HOSP) (CAC6 - HELIPORT - Cert)	Lat: 51.076	Long: -114.148	4.938KM	2.666NM	SE
CALGARY (FOOTHILLS HOSP MCCAIG TOWER) (CMT3 - HELIPORT - Cert)	Lat: 51.065	Long: -114.135	6.399KM	3.455NM	SE

## ALBERTA

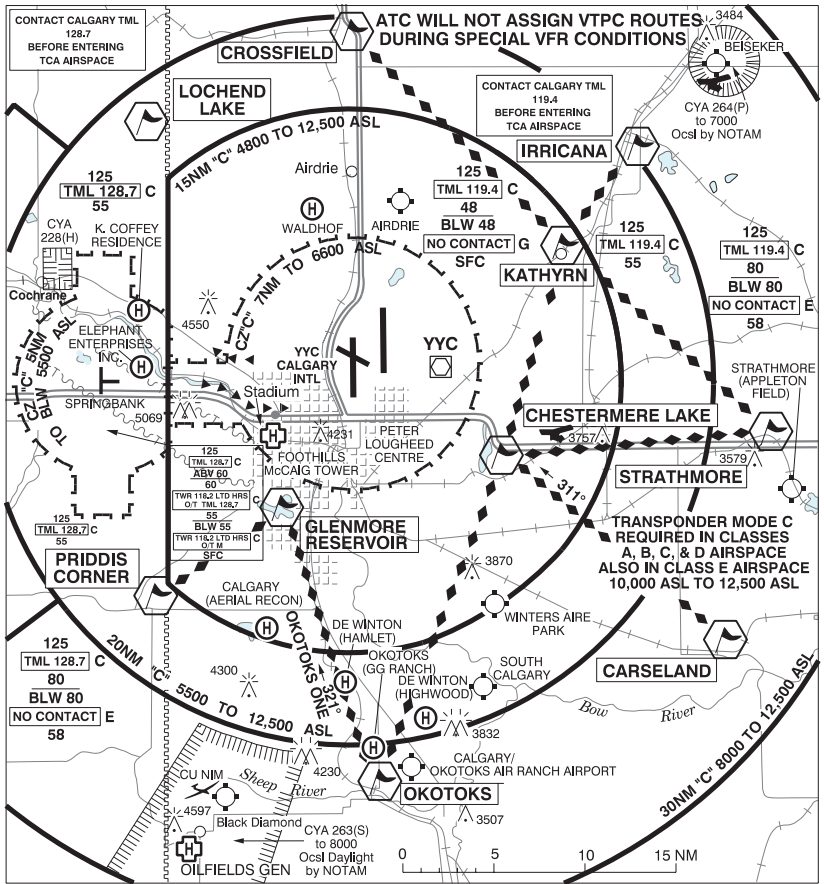
## AERODROME / FACILITY DIRECTORY

## CALGARY (BOW CROW) AB (Heli)

CEP2

<b>REF</b>	N51 06 11 W114 12 54 15°E (2014) UTC-7(6) Elev 3540' VTA A5005	
<b>OPR</b>	Alberta Sustainable Resource Development, Forest Protection Division 403-297-8828/8822 Reg PPR	
<b>PF</b>	C-1,2,3,4,5,6	
<b>FLT PLN</b>		
<b>FIC</b>	Edmonton 866-WXBRIEF (Toll free within Canada) or 866-541-4102 (Toll free within Canada & USA)	
<b>ACC</b>	Edmonton IFR 888-358-7526	
<b>HELI DATA</b>	30' dia 100' dia Max heli overall length 57'	
<b>COMM</b>	Eastbound Calgary VFR ADV 119.4 Westbound Springbank TWR 118.2 Dispatch 122.9 AM (Seasonal)	
<b>PRO</b>	Arr/dep 105° to 252° fr heli, slope 16% (H3).	
<b>CAUTION</b>	P-Lines to N.	

**CALGARY VFR TERMINAL PROCEDURES CHART**

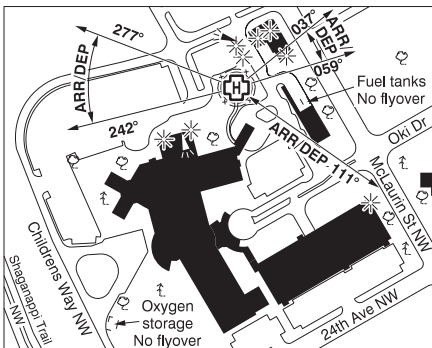
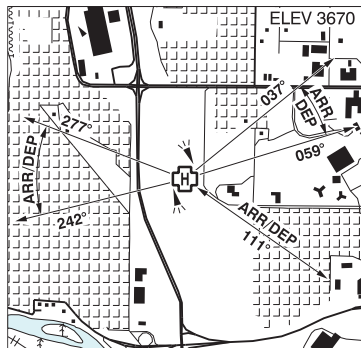


ALBERTA

AERODROME / FACILITY DIRECTORY

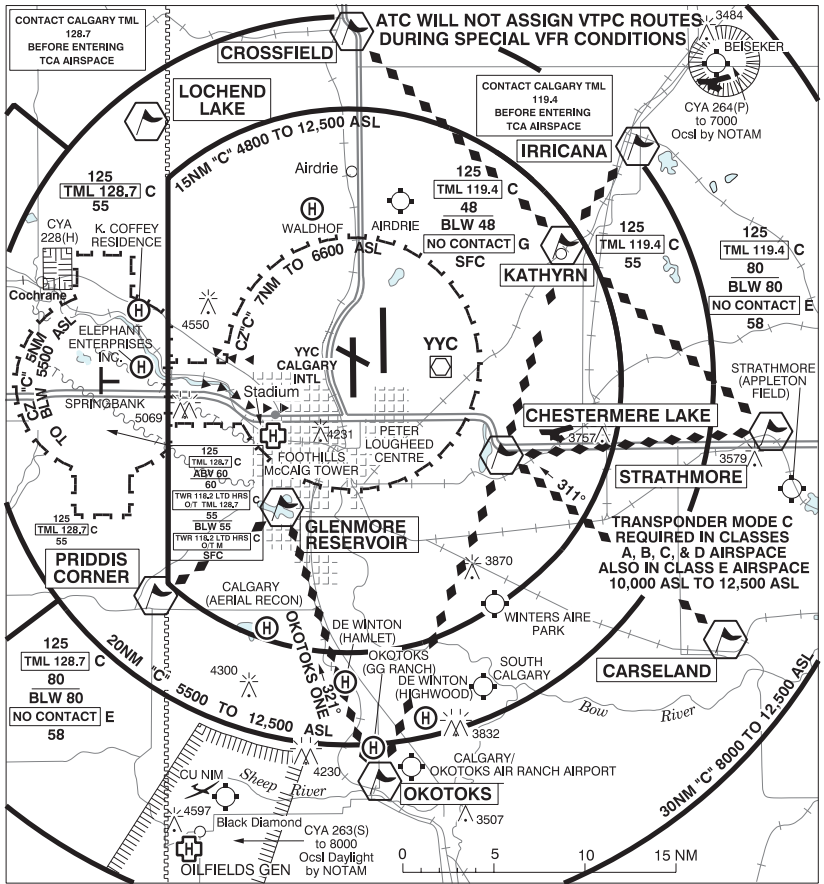
**CALGARY (ALBERTA CHILDREN'S HOSP) AB (Heli)**

**CAC6**



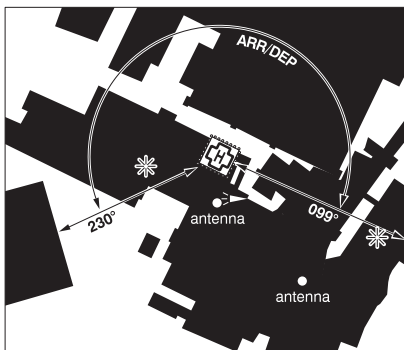
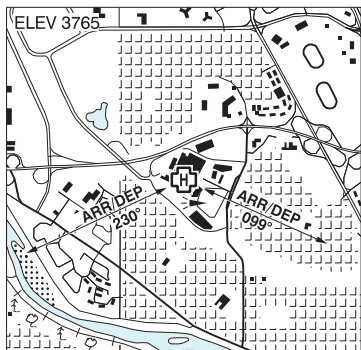
<b>REF</b>	N51 04 33 W114 08 52 Adj WNW 14°E (2018) UTC-7(6) Elev 3670' VTA A5005
<b>OPR</b>	Alberta Health Services 403-955-7600 Cert NVIS OPS AUTH PPR
<b>PF</b>	A-1,4 C-2,3,5,6
<b>FLT PLN</b>	
<b>FIC</b>	Edmonton 866-WXBRIEF (Toll free within Canada) or 866-541-4102 (Toll free within Canada & USA)
<b>ACC</b>	Edmonton IFR 888-358-7526
<b>HELI DATA</b>	FATO 86' dia CONC/GRASS TLOF 33' dia CONC Safety Area 115' dia Max heli overall length 57.4' CAR (602.96)
<b>RCR</b>	Opr
<b>LIGHTING</b>	RW(LO) yellow RF(FL) PN
<b>COMM</b>	
<b>VFR ADV</b>	119.4
<b>PRO</b>	Arr/dep 037° to 059° fr heli (H1), 111° fr heli (H1), 242° to 277° fr heli (H1) (CAR 602.96).
<b>CAUTION</b>	Lamp standards 20' AGL all quads. Floodlights activated on req. 4' fence in Safety Area under all flt paths.

**CALGARY VFR TERMINAL PROCEDURES CHART**



**CALGARY (FOOTHILLS HOSP McCAIG TOWER) AB (Heli)**

**CMT3**



<b>REF</b>	N51 03 55 W114 08 06 Adj 15°E (2014) UTC-7(6) Elev 3765' VTA A5005
<b>OPR</b>	Alberta Health Services 403-944-1152 Cert NVIS OPS AUTH PPR
<b>FLT PLN</b>	
<b>FIC</b>	Edmonton 866-WXBRIEF (Toll free within Canada) or 866-541-4102 (Toll free within Canada & USA)
<b>HELI DATA</b>	FATO 86' dia rooftop non-supporting TLOF 57' x 57' CONC Safety Area 115' dia Rooftop 17,000 lbs Max heli overall length 57.4' (CAR 602.96)
<b>LIGHTING</b>	RY(LO)
<b>COMM</b>	
<b>VFR ADV</b>	119.4
<b>PRO</b>	Arr/dep 230° to 099° fr heli (H1), day/ngt use (CAR 602.96).

**CALGARY VFR TERMINAL PROCEDURES CHART**

