
FLIGHT PLAN & SITE SURVEY

K 9011-5725 Zone K Saskatchewan- Don Forness

May 22, 2026



IMPORTANT NOTICE

Please ensure you have received all required authorizations prior to flight. This Site Survey was created using RPAS Wilco. The user accepts all responsibility for the accuracy of the information.

Terms & Conditions: rpaswilco.com/#tnc

Mission Information

K 9011-5725 ZONE K SASKATCHEWAN- DON FORNESS

FLIGHT DETAILS

Reference No:	MAAC-9011-5725
Project Name:	Zone K Saskatchewan
Pilot Name:	MAAC
Pilot Certificate:	
Mission Type:	VLOS
Flight Start:	May 22, 2026 09:02 PM
Flight End:	May 22, 2026 10:02 PM

LOCATION DETAILS

Flight Address:	Don Forness
Latitude:	49° 57' 37.44" N (49.96)
Longitude:	107° 37' 24.60" W (-107.624)
Field Elevation:	2802 ft MSL
Altitude / Radius:	400 ft / 926 m (0.5 nm)
Classification:	UNCONTROLLED
FIR / Contact:	CZWG / 204-983-8338

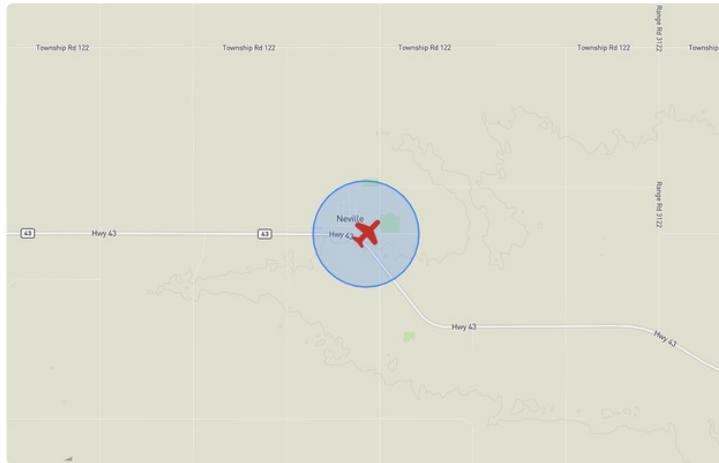
REPORT CONTENTS

Site Survey • Obstacles (if available) • Nearby Aerodromes • Canadian Aviation Regulations • GFA • Aerodrome Supplements • METAR & TAF • NOTAMs • CFS





Flight Map & MODEL Details

MISSION LOCATION SURVEY

FLIGHT AREA MAP



MISSION LOCATION DETAILS

ROLE	LATITUDE	LONGITUDE
 MODEL	49° 57' 37.44" N 49.96	107° 37' 24.60" W -107.624
 Pilot		
 Payload Op.		
 Observer		

Airspace Classification

MISSION LOCATION SURVEY

AIRSPACE MAP



OVERLYING AIRSPACES

Class	Name	Floor	Ceiling
E	Swift Current, SK a) [CAE]	2200AGL	18000MSL
E	Swift Current, SK [TA]	700AGL	18000MSL
B	Swift Current, SK b) [CAE]	12500MSL	18000MSL

NEAREST AERODROMES & DISTANCE FROM OPERATION

POVERTY VALLEY (CPV9 - AERODROME - Reg)	Lat: 50.039	Long: -107.256	27.672KM	14.942NM	E
SWIFT CURRENT (CYYN - AERODROME - Cert)	Lat: 50.292	Long: -107.69	37.17KM	20.07NM	N
SWIFT CURRENT (CYPRESS REGIONAL HOSPITAL) (CCY2 - HELIPORT - Cert)	Lat: 50.311	Long: -107.774	40.419KM	21.825NM	N

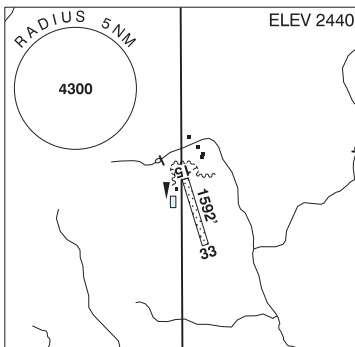
SASKATCHEWAN

AERODROME / FACILITY DIRECTORY

POVERTY VALLEY SK

CPV9

REF	N50 02 20 W107 15 22 11°E (2013) UTC-6 Elev 2440' A5006
OPR	N. Amthor 306-741-3108/3991 Reg
FLT PLN	
FIC	Edmonton 866-WXBRIEF (Toll free within Canada) or 866-541-4102 (Toll free within Canada & USA)
PF	C-1
RWY DATA	Rwy 15(152°)/33(332°) 1592x30 grass
RCR	Opr
COMM	
ATF	tfc 123.2 5NM 5400 ASL



SASKATCHEWAN

AERODROME / FACILITY DIRECTORY

SWIFT CURRENT SK

CYYN

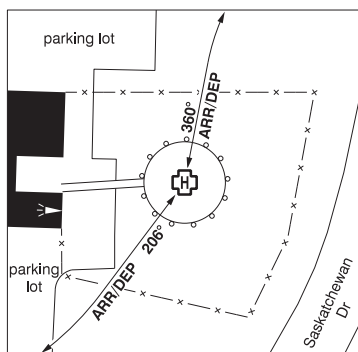
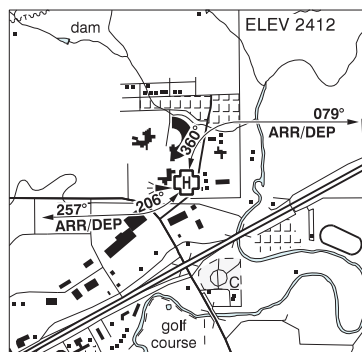
REF	N50 17 31 W107 41 24 4E 11°E (2013) UTC-6 Elev 2681' A5006 LO2 HI3 CAP	
OPR	City of Swift Current 306-778-4803 Cert Ldg fees exc for single-engine piston acft	
PF	A-1 C-2,3,4,5,6	
FLT PLN		
FIG	Edmonton 866-WXBRIEF (Toll free within Canada) or 866-541-4102 (Toll free within Canada & USA)	
WX	METAR AUTO H24 (see COMM) TAF H24, issue times: 00, 06, 12, 18Z. WxCam	
SERVICES	Cardlock H24, VISA, Mastercard and American Express accepted. Ctc 306-741-0132	
FUEL	100LL, JA-1 (FSII avbl)	
OIL	All	
S	2,3,4,5,6	
RWY DATA	Rwy 13(124°)/31(304°) 4250x150 ASPH Rwy 13 up 0.4% Rwy 04(034°)/22(214°) 2495x50 ASPH Rwy 22 up 0.72%	
RWY CERT	Rwy 04/22 AGN IIIA Rwy 13/31 AGN IIIA	
TWY	Twy B width 35'	
RCR	Opr 14-23Z Mon-Fri exc hols O/T 1 hr PN AMSCR CRFI PCN.	
LIGHTING	04-(TE ME), 22-(TE ME), 13-(TE ME), 31-AD(TE ME) P1 ARCAL-122.3 type K	
COMM		
RCO	Edmonton rdo 123.275 (FISE) 351.3 (FISE) 126.7 (bcst)	
MF	tfc 122.3 (no ground station) 5NM 5700 ASL (CAR 602.98)	
PAL	Winnipeg Ctr 132.8	
AWOS	124.7	
PRO	ATS PPR REQUIREMENTS: Ctc Winnipeg ACC 204-984-5979 for IFR tng and photo survey within Swift Current Class E Airspace 12,500' and below excluding the airspace within the Moose Jaw MTCA.	
CAUTION	Migratory birds in vic of A/D	

SASKATCHEWAN

AERODROME / FACILITY DIRECTORY

SWIFT CURRENT (CYPRESS REGIONAL HOSP) SK (Heli)

CCY2



REF	N50 18 39 W107 46 27 Adj NNE 11°E (2013) UTC-6 Elev 2412' A5006
OPR	Saskatchewan Health Authority 306-778-9589 or 306-741-6884 Cert NVIS OPS AUTH PPR
PF	A-1,2,4 C-3,5,6,7,8
FLT PLN	
FIG	Edmonton 866-WXBRIEF (Toll free within Canada) or 866-541-4102 (Toll free within Canada & USA)
HELI DATA	FATO/TLOF 86' dia CONC Safety Area 115' dia Max heli overall length 57.4' (CAR 602.96)
RCR	APM 306-741-1386
LIGHTING	RW(HI) green ARCAL-122.3 type K
COMM	
RCO	Edmonton rdo 123.275 (FISE) 351.3 (FISE) 126.7 (bcst)
MF	tfc 122.3 (no ground station) 5NM centred on Swift Current A/D 3.4NM E 5700 ASL (CAR 602.98)
PAL	Winnipeg Ctr 132.8
PRO	Arr/dep curved 360° to 079° fr heli, slope 16% (H2). Arr/dep curved 206° to 257° fr heli, slope 16% (H2). NVIS rqrd for night use, all flt paths (CAR 602.96).
CAUTION	Lgtd bldg aprx 124' W of heli. Lgtd WI mast on bldg aprx 124' W of heli. Day-marked with obst lights lamp posts E and S of heli along roadway and in parking lot SW of heli.