
FLIGHT PLAN & SITE SURVEY

A 31-5735 AIRDRIE MODELERS AIRCRAFT SOCIETY-
Colpitts Ranches Field

May 22, 2026



IMPORTANT NOTICE

Please ensure you have received all required authorizations prior to flight. This Site Survey was created using RPAS Wilco. The user accepts all responsibility for the accuracy of the information.

Terms & Conditions: rpswilco.com/#tnc

Mission Information

A 31-5735 AIRDRIE MODELERS AIRCRAFT SOCIETY- COLPITTS RANCHES FIELD

FLIGHT DETAILS

Reference No:	MAAC-31-5735
Project Name:	AIRDRIE MODELERS AIRCRAFT SOCIETY
Pilot Name:	MAAC
Pilot Certificate:	
Mission Type:	VLOS
Flight Start:	May 22, 2026 09:02 PM
Flight End:	May 22, 2026 10:02 PM

LOCATION DETAILS

Flight Address:	Colpitts Ranches Field
Latitude:	51° 15' 13.03" N (51.254)
Longitude:	114° 9' 40.42" W (-114.161)
Field Elevation:	3970 ft MSL
Altitude / Radius:	400 ft / 926 m (0.5 nm)
Classification:	UNCONTROLLED
FIR / Contact:	CZEG / 780-890-8397

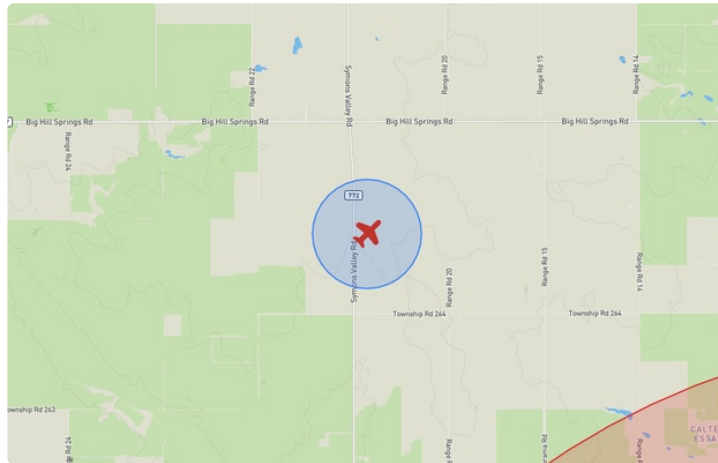
REPORT CONTENTS

Site Survey • Obstacles (if available) • Nearby Aerodromes • Canadian Aviation Regulations • GFA • Aerodrome Supplements • METAR & TAF • NOTAMs • CFS





Flight Map & MODEL Details

MISSION LOCATION SURVEY

FLIGHT AREA MAP



MISSION LOCATION DETAILS

ROLE	LATITUDE	LONGITUDE
 MODEL	51° 15' 13.03" N 51.254	114° 9' 40.42" W -114.161
 Pilot		
 Payload Op.		
 Observer		

Airspace Classification

MISSION LOCATION SURVEY

AIRSPACE MAP



OVERLYING AIRSPACES

Class	Name	Floor	Ceiling
E	Calgary, AB a) [CAE]	5800MSL	18000MSL
E	V306 VHF/UHF Airway	2200AGL	18000MSL
C	Springbank, AB [CZ]	SFC	5500MSL
F	CYA228 (H) CALGARY, AB	SFC	6500MSL
C	Calgary, AB d) [TCA]	4800AGL	18000MSL
B	Calgary, AB a) [TCA]	12500MSL	18000MSL
C	Calgary, AB b) [TCA]	8000MSL	12500MSL
C	Calgary, AB c) [TCA]	5500AGL	8000MSL
E	T727 Fixed RNAV Route	2200AGL	18000MSL
C	Calgary Intl, AB [CZ]	SFC	3000GND
E	V112 VHF/UHF Airway	2200AGL	18000MSL

NEAREST AERODROMES & DISTANCE FROM OPERATION

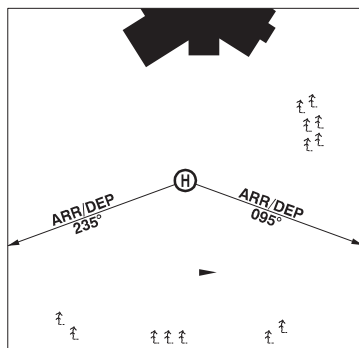
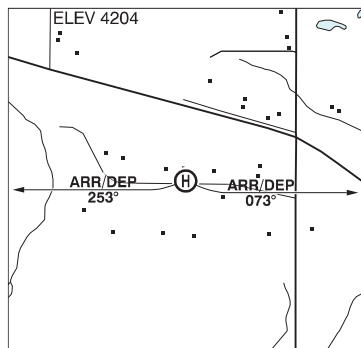
K. COFFEY RESIDENCE (CKC4 - HELIPORT - Reg)	Lat: 51.165	Long: -114.314	14.506KM	7.833NM	SW
YYC CALGARY INTL (CYYC - AERODROME - Cert)	Lat: 51.114	Long: -114.02	18.383KM	9.926NM	SE
CALGARY (BOW CROW) (CEP2 - HELIPORT - Reg)	Lat: 51.103	Long: -114.215	17.152KM	9.261NM	S

ALBERTA

AERODROME / FACILITY DIRECTORY

CALGARY / K. COFFEY RESIDENCE AB (Heli)

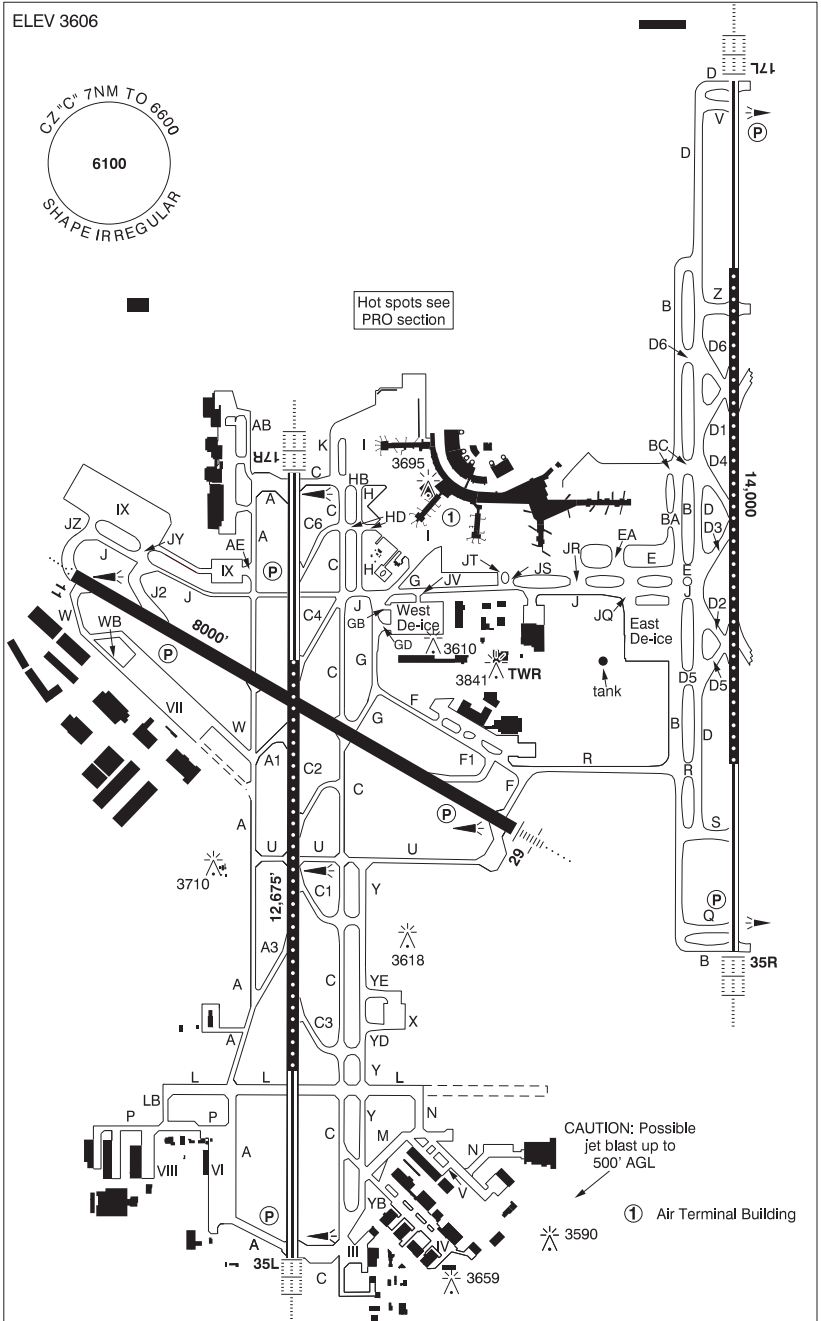
CKK4



REF	N51 09 56 W114 18 52 3NW 15°E (2012) UTC-7(6) Elev 4204' VTA A5005
OPR	Ken Coffey 403-680-9467 Reg PN
PF	C-1,2,3,6 D-4,5
FLT PLN	<p>FIC Edmonton 866-WXBRIEF (Toll free within Canada) or 866-541-4102 (Toll free within Canada & USA)</p> <p>ACC Edmonton IFR 888-358-7526</p>
HELI DATA	FATO/TLOF 64' dia GRASS Safety Area 85' dia Max heli overall length 42.7'
RCR	Opr
COMM	<p>ATIS 127.9 14-06Z‡</p> <p>GND Springbank Gnd 121.8 14-06Z‡</p> <p>TWR Springbank Twr 118.2 (outer) 120.7 (inner) (V) 16-24Z‡ 118.2 (V) 14-16Z‡ & 00-06Z‡ emerg only 403-216-7132</p> <p>MF tfc 118.2 06-14Z‡ O/T Springbank Twr 118.2 5NM 5500 ASL (CAR 602.98)</p>
PRO	Arr/Dep curved flt path see sketch 095° thru 073° fr heli and 235° thru 253° fr heli. All slope 8% (H3). PPR opr 403-680-9467 CTC Springbank GND 121.8 prior to tkof for class C clnc and dep info
CAUTION	Stone Wall and conc patio N of Safety area. Trees 100' S of heli. Lochend Lake VFR Rte 0.5NM W of heli. Hwy 1A VFR Rte 0.25NM N of 095° flt path.

CALGARY / YYC CALGARY INTL AB

CYYC



ALBERTA

AERODROME / FACILITY DIRECTORY

CALGARY / YYC CALGARY INTL AB (Cont'd)

CYYC

REF	N51 06 50 W114 01 13 15°E (2013) UTC-7(6) Elev 3606' A1904 A5005 LO2 HI3 T1 CAP OC
OPR	The Calgary Airport Authority 403-735-1300 H24 Cert Ldg fees
PF	A-1,2,3,4,5,6
CUST	AOE 888-226-7277
FLT PLN	Pilots are to open/close VFR Flt Pln with Edmonton FIC via phone or Edmonton rdo 123.375 when practicable.
FIC	Edmonton 866-WXBRIEF (Toll free within Canada) or 866-541-4102 (Toll free within Canada & USA)
ACC	Edmonton IFR 888-358-7526
WX	METAR H24.
	TAF H24, issue times: 00, 03, 06, 09, 12, 15, 18, 21Z.
DUAT	Esso Avitat; Shell Aerocentre
SERVICES	
FUEL	100LL, JA-1 (FSII avbl), HPR
OIL	All
S	1,2,3,4,5,6
ARFF	DESIGNATED CAT 9
SUP FL	LHOX D & A-ice
JASU	CE16, Elect start 15/25
PVT ADV	Esso Avitat/Skyservice 128.85 403-291-4426; Shell AeroCentre/Sunwest Aviation 136.80 403-275-8121; Skyplan dispatch 122.95 403-275-2520; North Cariboo Air 131.25 403-717-1800 866-266-8690; Executive Flight Centre 122.0 403-295-7741 Fax 403-295-7784; Million Air FBO (AvFuel) 128.9 403-718-0447; Landmark Aviation/Signature Flight Support 122.85 403-295-4100
MIL CON	Skyservice Calgary FBO 403-592-3741
RWY DATA	Rwy 17L(165°)/35R(345°) 14,000x200 CONC Rwy 17R(165°)/35L(345°) 12,675x200 ASPH Rwy 11(105°)/29(285°) 8000x200 ASPH
RWY CERT	Rwy 17L RVR 600/Rwy 35R RVR 600 AGN VI Rwy 17R RVR 1200(1/4sm)/Rwy 35L RVR 1200(1/4sm) AGN VI Rwy 11 RVR 1200(1/4sm)/Rwy 29 RVR 1200(1/4sm) AGN VI
TWY CERT	Twy: AB, GB, JT, LB, P, WB AGN III B Twy: L, M, N, W, YB AGN IV Twy: A, A1, A3, C, C1, C2, C3, C4, C6, F, F1, G, GD, H, HB, HD, J, J2, K, U, Y, YD, YE AGN V
TWY	Twy GB, GD: rstd to one-way westbound. Twy GB, GD, P: uncontrolled. Twy L: W of Twy A rstd to acft with wingspan of 118' or less. Twy N: Max outer main gear wheel span 29.5'. Twy YD, YE: rstd to acft with wingspan of 118' or less.
	WIDEBODY AIRCRAFT: Twy C: right turn on YB rstd to acft with wingspan of 118' or less. Twy F: left turn on F1 rstd to acft with wingspan of 79' or less. Left turn on G rstd to acft with wingspan of 118' or less. Twy F1: right turn on F rstd to acft with wingspan of 79' or less. Twy G: right turn on F rstd to acft with wingspan of 118' or less. Twy J (eastbound): right turn on J2 rstd to acft with wingspan of 79' or less. Twy J2: left turn on J rstd to acft with wingspan of 79' or less. Twy Y: right turn on YB rstd to acft with wingspan of 118' or less. Twy YB: left turn on C rstd to acft with wingspan of 118' or less. Left turn on Y rstd to acft with wingspan of 118' or less.
APRON	Apron I: Taxi lane btwn Twy EA and Twy BC rstd to acft with wingspan of 118' or less. Aprons I, VII, IX, X & West De-Ice: PPR Airport Ops is required. Aprons I, VII, IX: Power out and power back PPR Airport Ops is required.
RCR	Oprr CRFI, PCN

ALBERTA

AERODROME / FACILITY DIRECTORY

CALGARY / YYC CALGARY INTL AB (Cont'd)

CYYC

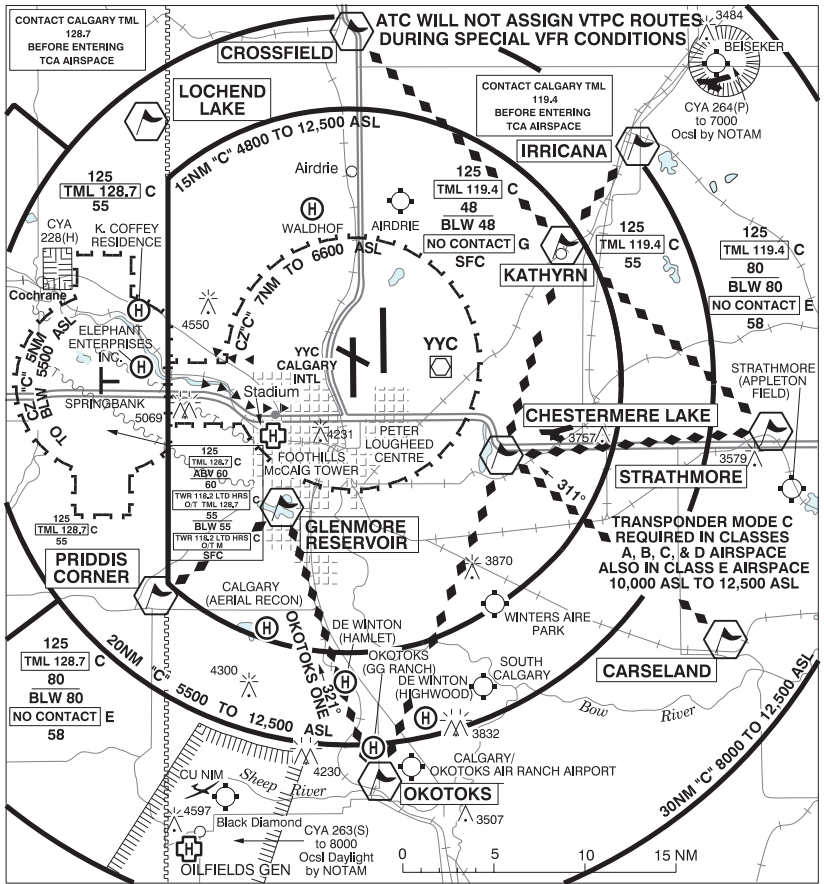
LIGHTING	11-AO(TE ME) P3, 29-AN(TE ME) P3, 17L-AL(TE HI A TDZL) P3, 35R-AL(TE HI A TDZL) P3, 17R-AL(TE HI CL TDZL) P3, 35L-AL(TE HI CL TDZL) P3
COMM	<p>RCO Edmonton rdo 123.375 (FISE) 126.7 (bcst)</p> <p>ATIS 128.225</p> <p>CLNC DEL 120.825 all dep acft ctc CLNC DEL</p> <p>APRON APRON I: Apron Advisory 121.3 12-07Z± O/T bcst intentions</p> <p>GND 121.9 (West) 125.35 (East) 275.8</p> <p>TWR 118.4 (West) 118.7 (East) 236.6 (E) (emerg only 403-216-7116)</p> <p>ARR 126.525 (West) 125.9 (East) 123.85 127.15 294.9</p> <p>DEP 119.8 (East) 124.52 (West) 255.1</p> <p>VFR ADV 119.4</p> <p>PAL Edmonton Ctr 124.525 127.775 243.5</p>
NAV	<p>VOR/DME YYC 116.7 Ch 114 N51 06 55 W113 52 55 (3573')</p> <p>DME IYC 111.5 Ch 52 N51 05 57 W114 01 23 (3559')</p> <p>IGY 110.55 Ch 42(Y) N51 07 28 W114 02 00 (3570')</p> <p>ILG 109.15 Ch 28(Y) N51 08 44 W113 59 19 (3628')</p> <p>IRF 110.75 Ch 44(Y) N51 06 46 W113 59 19 (3603')</p> <p>ILS IYC 111.5 (Rwy 35L) RVR</p> <p>IEM 109.3 (Rwy 17R) RVR</p> <p>ILG 109.15 (Rwy 17L) RVR</p> <p>IRF 110.75 (Rwy 35R) RVR</p> <p>IAQ 110.9 (Rwy 29) RVR</p> <p>IGY 110.55 (Rwy 11) RVR</p>
PRO	<p>Acft less than 3000 kg not auth for arr or dep 23-05Z± exc heli.</p> <p>Pilots should refer to Canadian Airport Charts (CAC) to obtain details on established hot spots, prior to operating on maneuvering areas. CAC are available for free on the NAV CANADA website.</p> <p>AIRSPACE: see VTPC for VFR routes & pro. Transponder rqr'd in class "C" & "D" airspace & CZ.</p> <p>Pilots to close VFR flt plans with Edmonton FIC (phone) when practicable or request closure fr ATC. Pilots of acft not filing a VFR or IFR flt pln within or into Calgary Class "C" Airspace, are to ctc ATC 888-882-2254 for transponder code prior to flt. PPR for Balloon flt in Calgary CZ. Balloon flt is rqr'd to remain min 4NM fr any rwy. Cinc and discrete transponder code rqr'd prior to entering CZ. Ctc Edmonton ACC 888-882-2254.</p> <p>VFR city tours in Class C airspace over the Calgary downtown area may be denied when Rwy 17L or 17R are act at CYYC.</p> <p>AIRPORT: High intensity rwy ops in effect.</p> <p>ATC: <u>IFR Clearance Acknowledgement</u></p> <p>IFR clearance read back with Calgary Tower clearance delivery shall include the acft call sign, assigned SID name and transponder code.</p> <p>MULTILATERATION: Acft transponders must be kept on at all times when manoeuvring on the airport (turned on prior to brake release and on arrival, on until final engine shutdown).</p> <p>Pilots that do not have a transponder code issued by ATC must squawk 1000 when taxiing.</p> <p>PEAK HOURS: 23-05Z±</p> <p>CIRCUITS: No circuits.</p> <p>TRAINING FLIGHTS: No ab initio tng. PVT pilot's license min rqr'd for ops in CZ. Round-robin, test and tng flts proh during peak hrs. PPR for all round-robin, test or tng flts outside peak hrs: ctc ATC 888-882-2254. Helis exempt.</p> <p>LOW AND REDUCED OPERATING PROCEDURES (LVOP/RVOP): See CAP</p> <p>NOISE: Noise oprg restriction & noise abatement procedure in effect. See CAP</p> <p>MILITARY: Mil jet acft circuits & overhead break pro proh.</p>

CALGARY / YYC CALGARY INTL AB (Cont'd)

CYYC

PRO (Cont'd)	<p>AIRPORT RESERVATION OFFICE (ARO): Airport Reservation Office (ARO) pro for all general & business aviation acft oprg IFR & VFR flts. Opr must file a dep & arr reservation through the Online Coordination System (OCS): www.online-coordination.com. More info avbl at Airport Reservation Office (ARO) (yyc.com): email aro@yyc.com or call 403-735-1300.</p> <p>DE-ICING PROCEDURES:</p> <ol style="list-style-type: none"> 1. Contact CALGARY DE-ICE on 129.5 30 min prior to push-back with acft type and estimated push-back time. 2. Contact CALGARY DE-ICE on 129.5 5 min prior to push-back to confirm treatment type and DE-ICE pad assignment. 3. Follow normal push-back procedures and advise Apron Advisory EAST or WEST DE-ICE pad has been assigned. 4. East Pad - Enter from Twy J at Twy JQ. When instructed by GROUND CONTROL, contact PAD CONTROL on 129.125 prior to entering pad. 5. West Pad - Enter from Twy J at Twy JV. When instructed by GROUND CONTROL, contact PAD CONTROL on 122.35 prior to entering pad. 6. Follow PAD CONTROL instructions, signboards and guidance lines to the assigned staging position or de-icing bay and confirm "BRAKES SET" when in position with nosewheel on stop bar. <p>AUTOMATIC MODE (Active signboard guidance): As the acft enters the de-icing bay, proximity capturing devices will recognize the acft. The signboards will actively guide the acft to the stop bar position and the signboard will advise SET PARK BRAKE.</p> <p>MANUAL MODE (Automatic mode not operational): Follow the instructions from PAD CONTROL and stop on the designated stop bar. Nosewheel should be placed as close to the stop bar marking as possible.</p> <p>CAUTION: The wingtip to tail clearance for acft taxiing in the EAST pad from JQ behind staged acft is only assured when the staged acft nosewheel is on the stopbar.</p> <ol style="list-style-type: none"> 7. If assigned a staging bay, monitor PAD CONTROL until further instructed. 8. When directed by PAD CONTROL, contact ICEMAN (East 123.35, West 122.725) and confirm "BRAKES SET, AIRCRAFT CONFIGURED FOR DE-ICE." 9. When de-ice is complete, do not move acft. When directed by ICEMAN, contact PAD CONTROL on assigned frequency. 10. Advise PAD CONTROL when ready to taxi. PAD CONTROL will assign appropriate GROUND CONTROL frequency to obtain taxi clearance. 11. Queuing is not permitted on Twy J, staging positions are provided on both EAST and WEST pads, reference DE-ICE Facility diagram. <p>See CAP for additional directions & restrictions.</p> <p>CAUTION: During the de-icing process, thrust setting must not exceed gnd idle and/or propellers must remain feathered at all times. Engine run-ups will only be approved by PAD CONTROL or ICEMAN when ops permit and when it is safe to do so. Engine fan blade ice shedding run-ups are proh on the de-ice pads.</p>
CAUTION	Coyotes at large on aprt. Extv waterfowl activity vic A/D year round.

CALGARY VFR TERMINAL PROCEDURES CHART



NAME	IDENT	LAT/LONG
CARCELAND	VCCRL	N50° 51' 15" W113° 28' 00"
CHESTERMERE LAKE	VCCMR	N51° 01' 30" W113° 49' 00"
CROSSFIELD	VCCRF	N51° 26' 00" W114° 02' 00"
GLENMORE RESERVOIR	VCGLM	N50° 59' 00" W114° 07' 30"
IRRICANA	VCIRR	N51° 19' 24" W113° 36' 12"
KATHYRN	VCKTH	N51° 13' 00" W113° 42' 00"
LOCHEND LAKE	VCLEL	N51° 20' 00" W114° 19' 12"
OKOTOKS	VCOKO	N50° 43' 30" W113° 58' 30"
PRIDDIS CORNER	VCPDS	N50° 53' 30" W114° 17' 45"
STRATHMORE	VCSRSM	N51° 02' 30" W113° 23' 30"

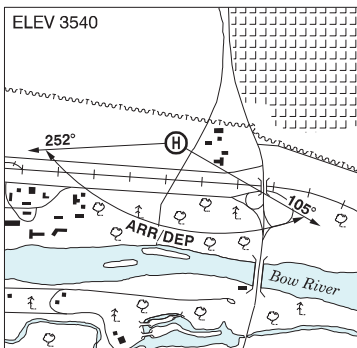
ALBERTA

AERODROME / FACILITY DIRECTORY

CALGARY (BOW CROW) AB (Heli)

CEP2

REF	N51 06 11 W114 12 54 15°E (2014) UTC-7(6) Elev 3540' VTA A5005
OPR	Alberta Sustainable Resource Development, Forest Protection Division 403-297-8828/8822 Reg PPR
PF	C-1,2,3,4,5,6
FLT PLN	
FIC	Edmonton 866-WXBRIEF (Toll free within Canada) or 866-541-4102 (Toll free within Canada & USA)
ACC	Edmonton IFR 888-358-7526
HELI DATA	30' dia 100' dia Max heli overall length 57'
COMM	Eastbound Calgary VFR ADV 119.4 Westbound Springbank TWR 118.2 Dispatch 122.9 AM (Seasonal)
PRO	Arr/dep 105° to 252° fr heli, slope 16% (H3).
CAUTION	P-Lines to N.



CALGARY VFR TERMINAL PROCEDURES CHART

