

---

# FLIGHT PLAN & SITE SURVEY

---

L 28-5737 OAKVILLE MFC INC.- UNIFOR Office

May 22, 2026



**IMPORTANT NOTICE**

Please ensure you have received all required authorizations prior to flight. This Site Survey was created using RPAS Wilco. The user accepts all responsibility for the accuracy of the information.

Terms & Conditions: [rpaswilco.com/#tnc](https://rpaswilco.com/#tnc)

# Mission Information

L 28-5737 OAKVILLE MFC INC.- UNIFOR OFFICE

## FLIGHT DETAILS

Reference No:	<b>MAAC-28-5737</b>
Project Name:	<b>OAKVILLE MFC INC.</b>
Pilot Name:	<b>MAAC</b>
Pilot Certificate:	
Mission Type:	<b>VLOS</b>
Flight Start:	<b>May 22, 2026 11:02 PM</b>
Flight End:	<b>May 23, 2026 12:02 AM</b>

## LOCATION DETAILS

Flight Address:	<b>UNIFOR Office</b>
Latitude:	<b>43° 24' 48.83" N ( 43.414 )</b>
Longitude:	<b>79° 44' 0.77" W ( -79.734 )</b>
Field Elevation:	<b>354 ft MSL</b>
Altitude / Radius:	<b>400 ft / 926 m ( 0.5 nm )</b>
Classification:	<b>UNCONTROLLED</b>
FIR / Contact:	<b>CZYZ / 905-676-4509</b>

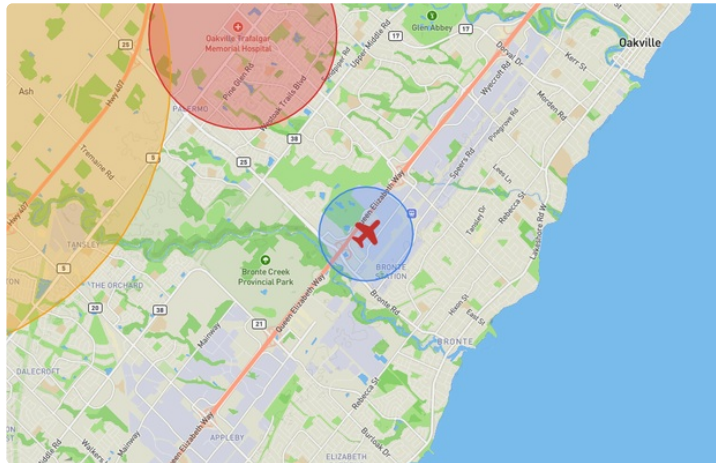
## REPORT CONTENTS

Site Survey • Obstacles (if available) • Nearby Aerodromes • Canadian Aviation Regulations • GFA • Aerodrome Supplements • METAR & TAF • NOTAMs • CFS





# Flight Map & MODEL Details

MISSION LOCATION SURVEY

## FLIGHT AREA MAP



## MISSION LOCATION DETAILS

ROLE	LATITUDE	LONGITUDE
 MODEL	43° 24' 48.83" N 43.414	79° 44' 0.77" W -79.734
 Pilot		
 Payload Op.		
 Observer		

# Airspace Classification

MISSION LOCATION SURVEY

## AIRSPACE MAP



## OVERLYING AIRSPACES

Class	Name	Floor	Ceiling
E	Southern Ontario Low Level Control Area c) [CAE]	6500MSL	18000MSL
E	Toronto, ON [TSP]	6500MSL	12500MSL
E	3.4.1-43 [TA]	700AGL	18000MSL
E	Southern Ontario Low Level Control Area a) [CAE]	2500MSL	6500MSL
C	Toronto, ON c) [TCA]	2500MSL	3500MSL
C	Toronto, ON d) [TCA]	3500MSL	4500MSL
C	Toronto, ON e) [TCA]	4500MSL	12500MSL
E	T781 Fixed RNAV Route	2200AGL	18000MSL
C	Toronto/Lester B. Pearson Intl, ON [CZ]	SFC	2500MSL
C	Toronto, ON a) [TCA]	1700MSL	2000MSL
C	Toronto, ON b) [TCA]	2000MSL	2500MSL
D	Hamilton, ON [CZ]	SFC	4500MSL

## NEAREST AERODROMES & DISTANCE FROM OPERATION

OAKVILLE (TRAFALGAR MEM HOSP) (CTM9 - HELIPORT - Cert)	Lat: 43.449	Long: -79.764	4.618KM	2.494NM	NW
BURLINGTON EXECUTIVE (CZBA - AERODROME - Reg)	Lat: 43.441	Long: -79.85	9.9KM	5.346NM	W
HAMILTON HARBOUR (CHH2 - WATERDROME - Reg)	Lat: 43.299	Long: -79.85	15.837KM	8.551NM	SW

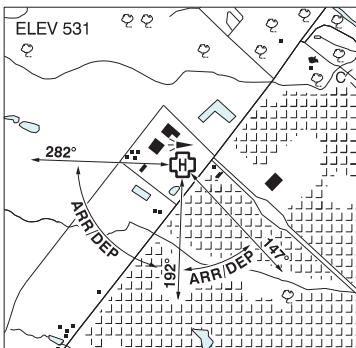
ONTARIO

AERODROME / FACILITY DIRECTORY

**OAKVILLE (TRAFALGAR MEM HOSP) ON (Heli)**

**CTM9**

<b>REF</b>	N43 26 56 W79 45 49 3.5W 10°W (2015) UTC-5(4) Elev 531' VTA A5000
<b>OPR</b>	Halton Health Care 905-845-2571 Cert PPR
<b>FLT PLN</b>	
<b>FIC</b>	London 866-WXBRIEF (Toll free within Canada) or 866-541-4104 (Toll free within Canada & USA)
<b>HELI DATA</b>	FATO/TLOF 84' dia ASPH Safety Area 115' dia Max heli overall length 57.4'
<b>RCR</b>	Opr
<b>LIGHTING</b>	RY(LO) green
<b>COMM</b>	
<b>ATF</b> <b>VFR ADV</b>	tfc 123.5 4NM below 2500 ASL Toronto 119.3
<b>PRO</b>	Arr/dep 147°-192° fr heli (H1), day/night use. Arr/dep 192°-282° fr heli, slope 16% (H2), day/night use.
<b>CAUTION</b>	Hosp building N and E of heli, unmarked P-lines and light standards S and W of heli.



## ONTARIO

## AERODROME / FACILITY DIRECTORY

## BURLINGTON EXECUTIVE ON

CZBA

<b>REF</b>	N43 26 29 W79 51 01 10°W (2013) UTC-5(4) Elev 601' VTA A5000 LO6 T2 CAP	
<b>OPR</b>	Vince Rossi 905-336-4010 (Day), 416-617-2428 (Night) Reg	
<b>PF</b>	C-1,2,3,4,5,6,7	
<b>CUST</b>	AOE/CAN	
<b>FLT PLN</b>		
<b>FIC</b>	London 866-WXBRIEF (Toll free within Canada) or 866-541-4104 (Toll free within Canada & USA)	
<b>WX</b>	AUTO (see COMM) WxCam	
<b>SERVICES</b>		
<b>FUEL</b>	100LL, JA cardlock dispenser	
<b>OIL</b>	100	
<b>S</b>	1,2,3,4,5	
<b>RWY DATA</b>	Rwy 14(141°)/32(321°) 3950x100 ASPH Rwy 14 down 0.61% Thld 14 displ 181'. Thld 32 displ 409'. Rwy 09(086°)/27(266°) 2464x50 asphalt Rwy 09 down 0.42% Thld 09 displ 328'. Thld 27 displ 254'	
<b>RCR</b>	Opr 13-23Z† or Spectrum Airways 905-336-4010	
<b>LIGHTING</b>	14-AS(TE LO) AP, 32-AS(TE LO) AP ARCAL-123.5 type J.	
<b>COMM</b>		
<b>ATF</b>	UNICOM ltd hrs O/T tfc 123.5 5NM below 2500 ASL	
<b>TML</b>	Toronto 119.3	
<b>AUTO</b>	122.55	
<b>PRO</b>	Circuit hgt 1500' ASL. Rgt hand circuits Rwy 27 & 32 (CAR 602.96). As soon as practicable after take-off fr Rwy 14 turn left 5° to avoid noise sensitive area. Helicopters follow fixed-wing circuit procedures. Rwy 14/32 preferential.	
<b>CAUTION</b>	50 ft trees on apch to Rwy 32 loc aprx 400' from thld of Rwy 32. Abn on top of twr 755 ASL (148 AGL) aprx 1635' N A/D. No runout area avbl beyond end of Rwy 09, 14, 27. Occasional wildlife activity.	

# CANADA WATER AERODROME SUPPLEMENT

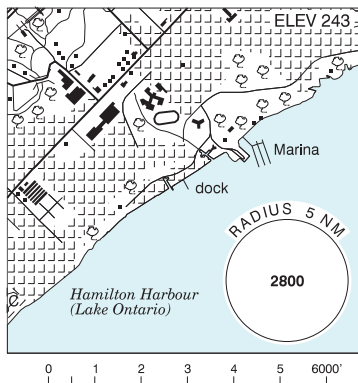
Effective 0901Z 19 March 2026 to 0901Z 18 February 2027

AERODROME/FACILITY DIRECTORY B23

## BURLINGTON / HAMILTON HARBOUR ON

CHH2

<b>REF</b>	N43 17 56 W79 50 59 2.72SW 10°W (2014) UTC-5(4) Elev 243' VTA A5000
<b>OPR</b>	Peter Stewart 905-379-5263 Reg PPR
<b>PF</b>	C-2,3,4,5,6
<b>FLT PLN</b>	<b>FIG</b> London 866-WXBRIEF (Toll free within Canada) or 866-541-4104 (Toll free within Canada & USA)
<b>SERVICES</b>	<b>S</b> 7
<b>A/D DATA</b>	Open water Apr-Oct, mud sand bottom, depth 4'.
<b>COMM</b>	<b>ATF</b> tfc 122.8 2NM excluding Hamilton CZ 3300 ASL
<b>CAUTION</b>	Lgt'd twr 1787 ASL (1000 AGL) aprx 5NM WNW of A/D.

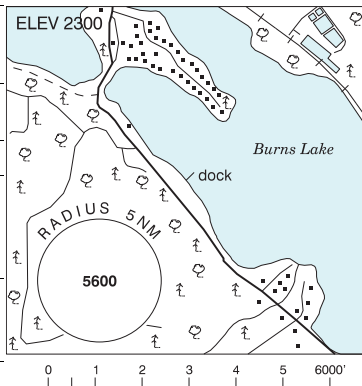


## BURNEGIE BAY ON — See LAKE JOSEPH / BURNEGIE BAY

## BURNS LAKE (LD AIR) BC

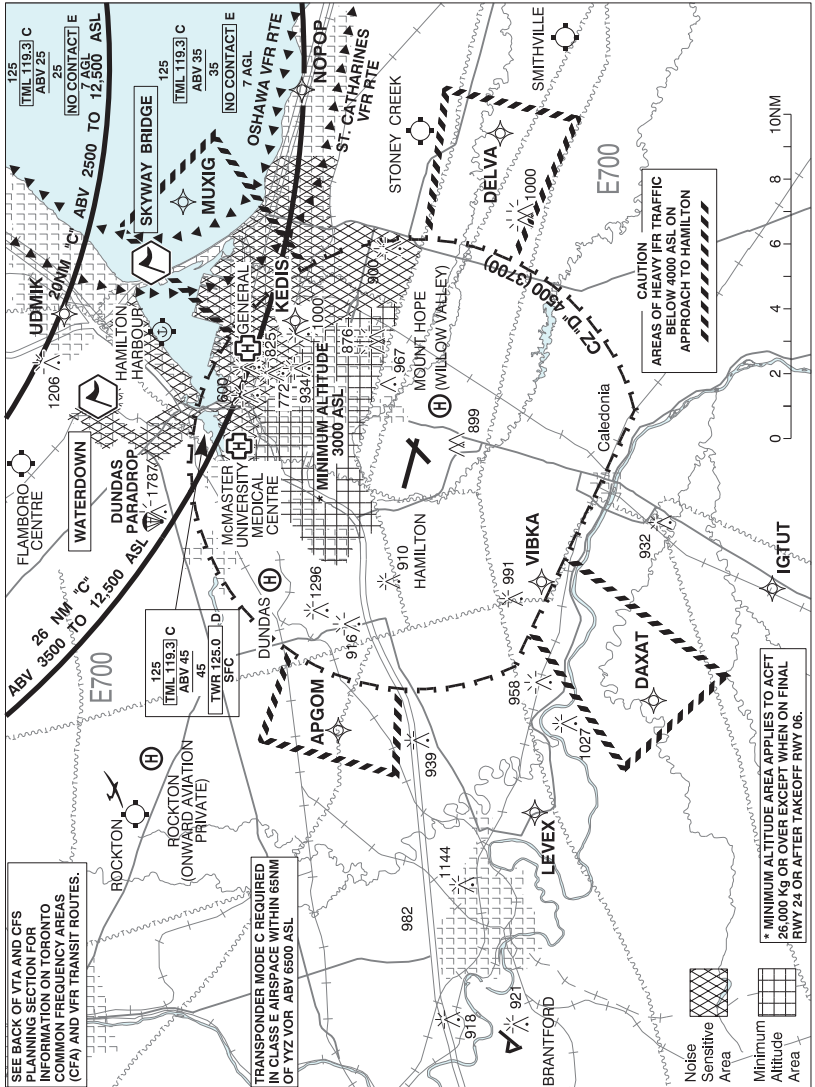
CLD3

<b>REF</b>	N54 12 37 W125 45 27 1.4SSE 19°E (2011) UTC-8(7) Elev 2300' A5013
<b>OPR</b>	Lakes District Air Svcs 250-692-3229 Reg PN
<b>PF</b>	B-1,3 C-2,4,5,6
<b>FLT PLN</b>	<b>FIG</b> Kamloops 866-WXBRIEF (Toll free within Canada) or 866-541-4101 (Toll free within Canada & USA)
<b>SERVICES</b>	PN
<b>FUEL</b>	100LL
<b>OIL</b>	25-60, 15W50, 20-50
<b>A/D DATA</b>	Open water May to mid-Nov. Depth 8' at dock, muddy bottom.
<b>COMM</b>	<b>ATF</b> tfc 123.2 5NM 5300 ASL
<b>PRO</b>	Avoid circuit over town and tkof in front of houses on lake.
<b>CAUTION</b>	Burns Lake land A/D aprx 7NM NW. Heli status unkn 1.5NM N. Twr on hill abv dock 150 AGL.



## BUTTERFLY LAKE ON — See PORT CARLING / BUTTERFLY LAKE

**HAMILTON VFR TERMINAL PROCEDURES CHART**



NAME	IDENT	LAT/LONG
SKYWAY BRIDGE	VCBBR	N43° 18' 00" W079° 47' 45"
WATERDOWN	VCWTD	N43° 19' 45" W079° 53' 15"