
FLIGHT PLAN & SITE SURVEY

L 424-5848 HALTON HILLS M.F.C.- Brampton Flight Centre
Airport - STATIC DISPLAY

May 22, 2026



IMPORTANT NOTICE

Please ensure you have received all required authorizations prior to flight. This Site Survey was created using RPAS Wilco. The user accepts all responsibility for the accuracy of the information.

Terms & Conditions: rpswilco.com/#tnc

Mission Information

L 424-5848 HALTON HILLS M.F.C.- BRAMPTON FLIGHT CENTRE AIRPORT - STATIC DISPLAY

FLIGHT DETAILS

Reference No:	MAAC-424-5848
Project Name:	HALTON HILLS M.F.C.
Pilot Name:	MAAC
Pilot Certificate:	
Mission Type:	VLOS
Flight Start:	May 22, 2026 11:03 PM
Flight End:	May 23, 2026 12:03 AM

LOCATION DETAILS

Flight Address:	Brampton Flight Centre Airport - STATIC DISPLAY
Latitude:	43° 45' 31.90" N (43.759)
Longitude:	79° 52' 39.30" W (-79.878)
Field Elevation:	925 ft MSL
Altitude / Radius:	400 ft / 926 m (0.5 nm)
Classification:	UNCONTROLLED
FIR / Contact:	CZYZ / 905-676-4509

REPORT CONTENTS

Site Survey • Obstacles (if available) • Nearby Aerodromes • Canadian Aviation Regulations • GFA • Aerodrome Supplements • METAR & TAF • NOTAMs • CFS

Airspace Classification

MISSION LOCATION SURVEY

AIRSPACE MAP



OVERLYING AIRSPACES

Class	Name	Floor	Ceiling
E	Southern Ontario Low Level Control Area c) [CAE]	6500MSL	18000MSL
E	Toronto, ON [TSP]	6500MSL	12500MSL
C	Toronto, ON b) [TCA]	2000MSL	2500MSL
E	T614 Fixed RNAV Route	2200AGL	18000MSL
C	Toronto, ON a) [TCA]	1700MSL	2000MSL
C	Toronto/Lester B. Pearson Intl, ON [CZ]	SFC	2500MSL
E	3.4.1-43 [TA]	700AGL	18000MSL
E	Southern Ontario Low Level Control Area a) [CAE]	2500MSL	6500MSL
C	Toronto, ON c) [TCA]	2500MSL	3500MSL
C	Toronto, ON d) [TCA]	3500MSL	4500MSL
C	Toronto, ON e) [TCA]	4500MSL	12500MSL

NEAREST AERODROMES & DISTANCE FROM OPERATION

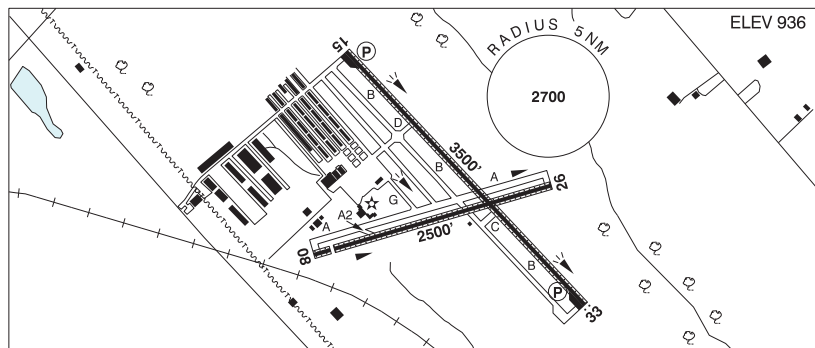
BRAMPTON-CALEDON (CNC3 - AERODROME - Cert)	Lat: 43.76	Long: -79.874	0.312KM	0.168NM	E
GEORGETOWN (GEORGETOWN AND DISTRICT HOSP) (CNZ6 - HELIPORT - Cert)	Lat: 43.644	Long: -79.934	13.519KM	7.3NM	S
BRAMPTON (NATIONAL D) (CPC4 - HELIPORT - Reg)	Lat: 43.833	Long: -79.701	16.426KM	8.869NM	NE

ONTARIO

AERODROME / FACILITY DIRECTORY

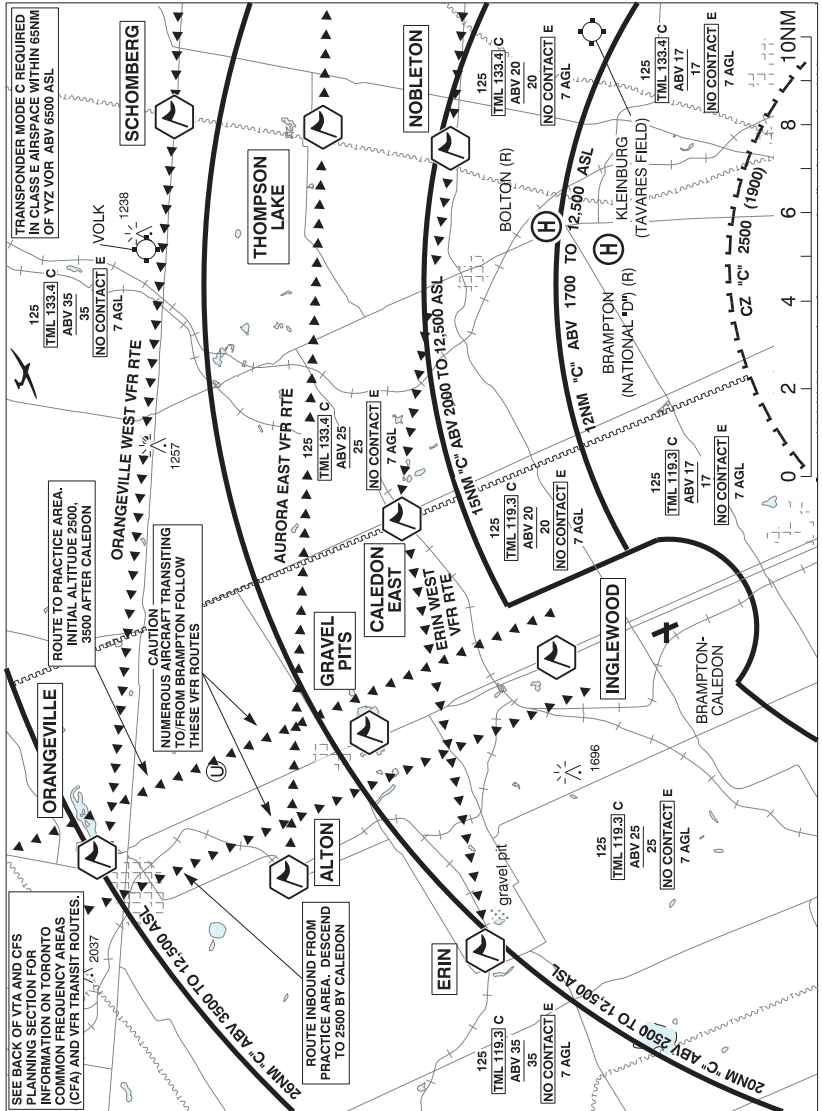
BRAMPTON-CALEDON ON

CNC3



REF	N43 45 35 W79 52 26 10°W UTC-5(4) Elev 936' VTA A5000 LO6 T2 CAP
OPR	Brampton Flying 905-838-1400 Cert Opr ltd hrs
PF	B-1,2 C-3,4,5,6
CUST	AOE/CAN
FLT PLN	<p>FIC London 866-WXBRIEF (Toll free within Canada) or 866-541-4104 (Toll free within Canada & USA)</p> <p>ACC Toronto 905-676-4590/4591/4592 or 888-217-1241</p> <p>WX WxCam</p> <p>DUAT Flying Club</p>
SERVICES	<p>FUEL 100LL</p> <p>OIL All</p> <p>S 1,2,3,4,5,6</p>
RWY DATA	Rwy 15(146°)/33(326°) 3500x75 ASPH/GRASS, centre 40' asphalt Rwy 08(081°)/26(261°) 2500x75 ASPH/GRASS, centre 40' asphalt Thld 08 displ 191'.
RWY CERT	Rwy 15/33 AGN I Rwy 08/26 AGN I
RCR	Opr Rws rstd to acft 12,500 lbs and under. Ltd win maint
LIGHTING	08-(TE ME), 15-(TE HI) AP, 26-(TE ME), 33-AS(TE HI) AP ARCAL-123.3 type K Win PN
COMM	ATF UNICOM ltd hrs O/T tfc 123.3 5NM up to 2500 ASL excluding that portion which penetrates Toronto class C Airspace
PRO	Call opr prior to ARCAL ops when win wx might affect rwy cond. Due to close proximity to Toronto/Lester B. Pearson Intl., there may be periods when ATC will be unable to approve use of the inst apch pro. Helicopters arr/dep via active rwy then taxi to/fr designated helicopter area btwn Golf & Bravo at Alpha. Acft with main gear track 18' and over use Rwy 15/33 then turn around bay and backtrack to twy D and apron.
CAUTION	Painted & lgtd twr 1696 ASL (400 AGL) aprx 4NM WNW. Narrow twys (18') exc twy D (24').

BRAMPTON-CALEDON VFR TERMINAL PROCEDURES CHART



ONTARIO

AERODROME / FACILITY DIRECTORY

BRAMPTON-CALEDON VFR TERMINAL PROCEDURES CHART (Cont'd)

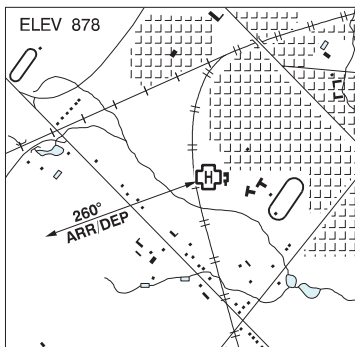
NAME	IDENT	LAT/LONG
ALTON	VCALT	N43° 51' 30" W080° 04' 00"
CALEDON EAST	VCLDE	N43° 52' 12" W079° 52' 00"
ERIN	VCERN	N43° 46' 48" W080° 04' 12"
GRAVEL PITS	VCGVL	N43° 51' 06" W079° 59' 06"
INGLEWOOD	VCIWD	N43° 47' 30" W079° 54' 18"
NOBLETON	VCNBL	N43° 54' 00" W079° 40' 00"
ORANGEVILLE	VCORG	N43° 55' 45" W080° 06' 15"
SCHOMBERG	VCSBG	N44° 00' 24" W079° 42' 00"
THOMPSON LAKE	VCTHL	N43° 57' 00" W079° 41' 36"

ONTARIO

AERODROME / FACILITY DIRECTORY

GEORGETOWN (GEORGETOWN & DISTRICT HOSP) ON (Heli)**CN26**

REF	N43 38 40 W79 56 04 Adj SW 10°W UTC-5(4) Elev 878' VTA A5000
OPR	Georgetown & District Hosp 905-873-0111 Cert PPR
FLT PLN	
FIC	London 866-WXBRIEF (Toll free within Canada) or 866-541-4104 (Toll free within Canada & USA)
HELI DATA	FATO/TLOF 83' x 83' ASPH Safety Area 114' x 114' Max heli overall length 55.3' Opr
RCR	
LIGHTING	DR RY(LO) LED green RF(FL)
PRO	Arr/dep 260° fr heli, slope 12% (H2).



ONTARIO

AERODROME / FACILITY DIRECTORY

BRAMPTON (NATIONAL "D") ON (Heli)

CPC4

REF	N43 50 00 W79 42 03 8NE 10°W UTC-5(4) Elev 780' VTA A5000
OPR	National Helicopter Inc. 905-893-2727 Reg PPR
PF	B-1 C-2,3,4,5,6
FLT PLN	FIC London 866-WXBRIEF (Toll free within Canada) or 866-541-4104 (Toll free within Canada & USA)
HELI DATA	65' x 65' CONC/ASPH 85' x 85' Rstd max heli length 43.3'
LIGHTING	RY (FH)
PRO	Arr/dep btwn 301°-011° & 091°-191° fr heli.

