
FLIGHT PLAN & SITE SURVEY

C 383-5588 SKY RANGERS MODEL FLYERS- Frolek Field

May 22, 2026



IMPORTANT NOTICE

Please ensure you have received all required authorizations prior to flight. This Site Survey was created using RPAS Wilco. The user accepts all responsibility for the accuracy of the information.

Terms & Conditions: rpaswilco.com/#tnc

Mission Information

C 383-5588 SKY RANGERS MODEL FLYERS- FROLEK FIELD

FLIGHT DETAILS

Reference No:	MAAC-383-5588
Project Name:	SKY RANGERS MODEL FLYERS
Pilot Name:	MAAC
Pilot Certificate:	
Mission Type:	VLOS
Flight Start:	May 22, 2026 08:05 PM
Flight End:	May 22, 2026 09:05 PM

LOCATION DETAILS

Flight Address:	Frolek Field
Latitude:	50° 33' 22.90" N (50.556)
Longitude:	120° 17' 6.10" W (-120.285)
Field Elevation:	2933 ft MSL
Altitude / Radius:	400 ft / 926 m (0.5 nm)
Classification:	UNCONTROLLED
FIR / Contact:	CZVR / 604-586-4500

REPORT CONTENTS

Site Survey • Obstacles (if available) • Nearby Aerodromes • Canadian Aviation Regulations • GFA • Aerodrome Supplements • METAR & TAF • NOTAMs • CFS





Flight Map & MODEL Details

MISSION LOCATION SURVEY

FLIGHT AREA MAP



MISSION LOCATION DETAILS

ROLE	LATITUDE	LONGITUDE
 MODEL	50° 33' 22.90" N 50.556	120° 17' 6.10" W -120.285
 Pilot		
 Payload Op.		
 Observer		

Airspace Classification

MISSION LOCATION SURVEY

AIRSPACE MAP



OVERLYING AIRSPACES

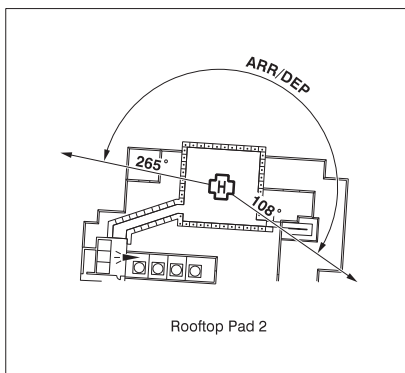
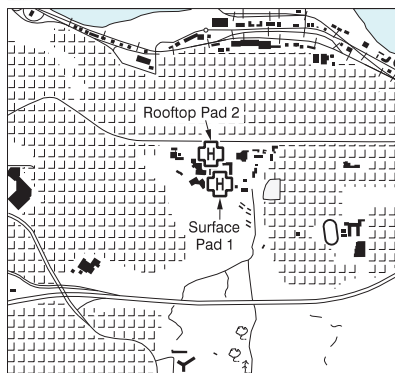
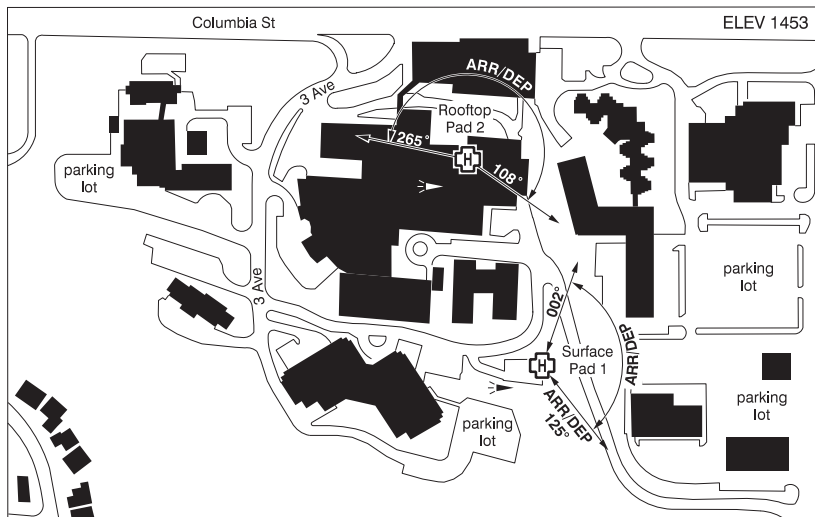
Class	Name	Floor	Ceiling
E	T650 Fixed RNAV Route	2200AGL	18000MSL
E	Kamloops, BC [TA]	700AGL	18000MSL
E	T695 Fixed RNAV Route	2200AGL	18000MSL
E	T611 Fixed RNAV Route	2200AGL	18000MSL
E	Kamloops, BC [CZ]	SFC	3000GND
F	CYR 6.1.0-6 KAMLOOPS REGIONAL CORRECTIONAL CENTRE, BC	SFC	3300MSL
E	T687 Fixed RNAV Route	2200AGL	18000MSL
E	T789 Fixed RNAV Route	2200AGL	18000MSL
E	3.1.1-18 [TA]	1600AGL	18000MSL
E	3.1.2-47 [CAE]	8000AGL	18000MSL
E	T676 Fixed RNAV Route	2200AGL	18000MSL
E	T799 Fixed RNAV Route	2200AGL	18000MSL

NEAREST AERODROMES & DISTANCE FROM OPERATION

KAMLOOPS (ROYAL INLAND HOSPITAL) (CBC4 - HELIPORT - Cert)	Lat: 50.669	Long: -120.333	12.958KM	6.997NM	N
KAMLOOPS (CAH7 - WATERDROME - Reg)	Lat: 50.7	Long: -120.433	19.093KM	10.309NM	NW
KAMLOOPS (CYKA - AERODROME - Cert)	Lat: 50.703	Long: -120.448	19.918KM	10.755NM	NW

KAMLOOPS (ROYAL INLAND HOSP) BC (Heli)

CBC4



REF	N50 40 09 W120 19 59 Adj 17°E (2012) UTC-8(7) Elev 1453' A5004
OPR	Interior Health Authority 250-374-4160 Cert PPR
PF	B-1,2,4 C-3,5,6
FLT PLN	
FIG	Kamloops 866-WXBRIEF (Toll free within Canada) or 866-541-4101 (Toll free within Canada & USA)
HELI DATA	<p>Surface Pad 1: FATO 86' dia elevated TLOF 57' dia CONC Safety Area 115' dia elevated 17,000 lbs Max heli overall length 57.4' (CAR 602.96)</p> <p>Rooftop Pad 2: FATO 86' x 86' non-supporting TLOF 71' x 71' CONC Safety Area 115' x 115' 18,000 lbs Max heli overall length 57.4' (CAR 602.96)</p>
RCR	Opr
LIGHTING	Surface Pad 1: RY(LO) green ARCAL-125.7 type J Rooftop Pad 2: RW(ME) green LED ARCAL-122.9 type K

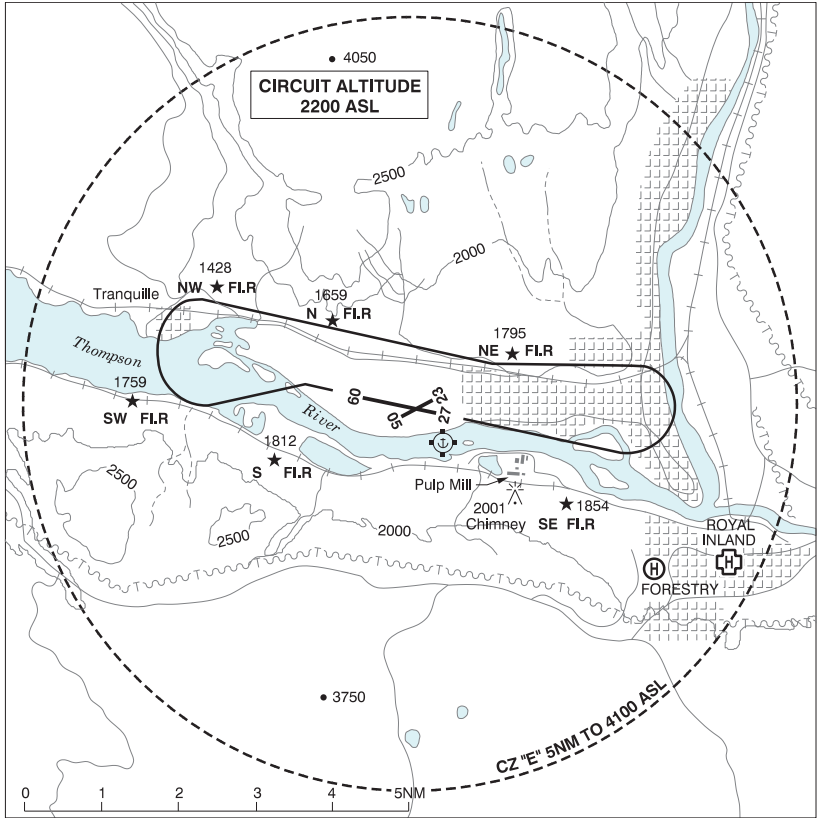
BRITISH COLUMBIA

AERODROME / FACILITY DIRECTORY

KAMLOOPS (ROYAL INLAND HOSP) BC (Heli) (Cont'd)**CBC4**

COMM	MF Kamloops rdo 125.7 5NM 4100 ASL centered on Kamloops aprt (CAR 602.98). A/G Hosp Security PEPCORD1 148.655 FM 3 min PN
PRO	Surface Pad 1 Arr/dep 125° fr heli, (H3) (CAR 602.96). Arr/dep 002° to 125° fr heli, (H1) (CAR 602.96). Rooftop Pad 2 Arr/dep 265° to 108° fr heli (H1) (CAR 602.96).
CAUTION	Unlgtd embankment to 40', adj SE. Marked & lgtd hosp penthouse elevator aprx 30' W of rooftop pad safety area.

KAMLOOPS VFR TERMINAL PROCEDURES CHART - NIGHT CIRCUIT PROCEDURE



CANADA WATER AERODROME SUPPLEMENT

Effective 0901Z 19 March 2026 to 0901Z 18 February 2027

AERODROME/FACILITY DIRECTORY B91

ISLAND VIEW ON — See LAKE SCUGOG / ISLAND VIEW

JENKINS COVE NB — See KARS / JENKINS COVE

JENNY'S LANDING ON — See KENNISIS LAKE / JENNNY'S LANDING

JOHN'S BAY ON — See LAKE ROSSEAU / JOHN'S BAY

KAMANISKEG LAKE ON — See COMBERMERE / KAMANISKEG LAKE

KAMLOOPS BC

CAH7

REF	N50 42 W120 26 3WNW 17°E (2013) UTC-8(7) Elev 1129' A5004	
OPR	Kamloops Aprt Ltd 250-376-3613 Reg	
PF	A-1,2,3,6 C-4,5 at adj land A/D	
CUST	AOE/15 16-08Z† 888-226-7277	
FLT PLN	FIG Kamloops 866-WXBRIEF (Toll free within Canada) or 866-541-4101 (Toll free within Canada & USA)	
SERVICES	Float cart chg. Call out chg may be levied for one or more svcs. Mountaineer Svc 250-376-3800, Spring Avn 250-554-2616.	
FUEL	100LL, JA-1 avbl at adj A/D, acft removal fr water rqrd, refuelling at dock proh.	
OIL	Shell 250-376-7633 or 250-819-9345 PN. Executive Flight Centre 250-376-9069.	
S	80, 100, 120 1 (ltd), 2, 3 (at adj land A/D), 5	
A/D DATA	Open water Apr-mid Nov. Depth 12', sand bottom, current 5 kt. Spring freshets raise water level by 12'. Buoys, ramp & beach.	
COMM	RADIO 125.7 297.0 (V) (emerg only 250-376-7941) RCO Pacific rdo 123.375 (FISE) 126.7 (bcst) MF rdo 125.7 5NM 4100 ASL centred on land A/D (CAR 602.98)	
PRO	Seaplane conform to land A/D tfc pattern: Rgt hand circuits Rwsy 04, 22 & 27 (CAR 602.96). E departures climb to 2200 ASL or river junction before turning N.	
CAUTION	Migratory bird activity in vic of A/D. Seasonal boat tfc. Dur low water sand bars hazardous; oprg channel swings from N side of river E of dock, to S side W of dock. Adj land A/D. Class "E" CZ to 5NM radius, 4100 ASL (2900 AGL).	

KAMLOOPS FIG - RCO

Cross reference to PACIFIC RADIO - RCO (New)

CANADA WATER AERODROME SUPPLEMENT

Effective 0901Z 19 March 2026 to 0901Z 18 February 2027

B92 AERODROME/FACILITY DIRECTORY

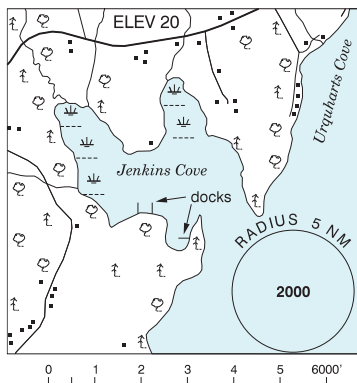
KAMLOOPS FSS – RCO

Victoria 119.7 (RAAS) 08-14Z† (N48 38 W123 25)

KARS / JENKINS COVE NB

CJO3

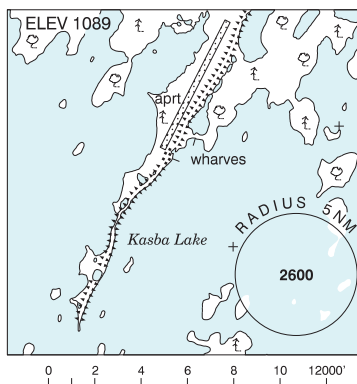
REF	N45 35 38 W65 57 25 1.3ESE 17°W (2017) UTC-4(3) Elev 20' A5003
OPR	Richard Pattie 506-485-1122 Reg
PF	B-1 C-2,5
FLT PLN	<p>FIG London 866-WXBRIEF (Toll free within Canada) or 866-541-4104 (Toll free within Canada & USA)</p> <p>ACC (IFR only) Moncton 506-867-7177 or 866-480-8200.</p>
SERVICES	<p>S 5</p>
A/D DATA	Open water May-Dec
COMM	<p>ATF tfc 123.05 5NM 3000 ASL</p>



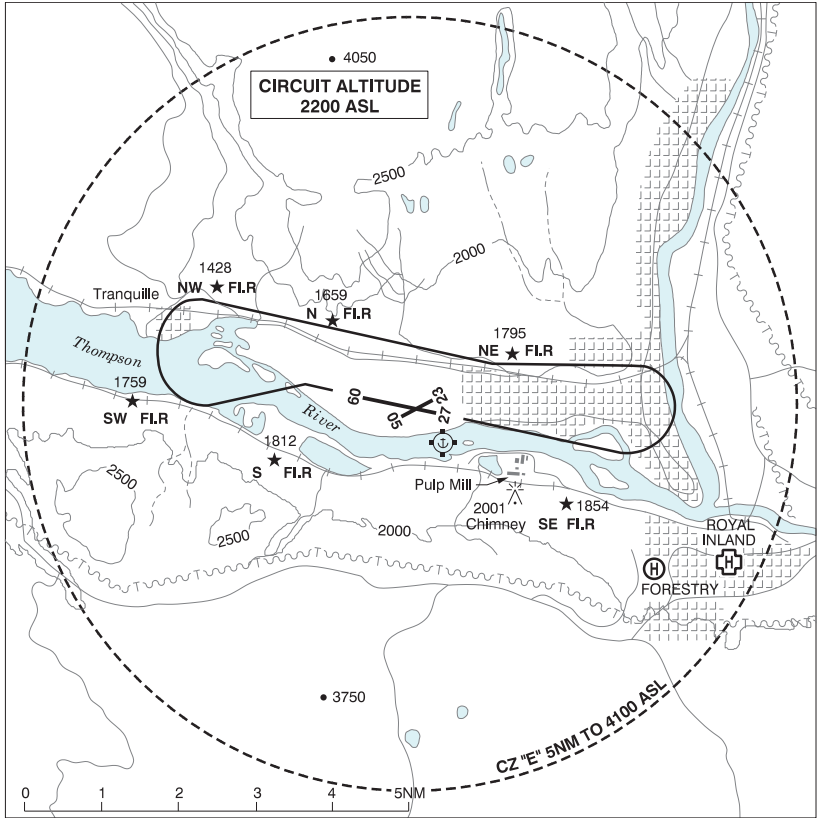
KASBA LAKE NT

CJP5

REF	N60 17 W102 31 7°E (2013) UTC-6(5) Elev 1089' A5024 A5031
OPR	Kasba Lake Lodge 250-248-3572 Reg PPR
PF	B-1,2,5 PN Oprg Jun15-Sep 1
FLT PLN	<p>FIG Edmonton 866-WXBRIEF (Toll free within Canada) or 866-541-4102 (Toll free within Canada & USA)</p>
SERVICES	<p>FUEL 100LL, JA Prior amg thru Opr Jun 15 - Aug 15</p>
A/D DATA	Open water Jun-Oct. Sand beach.
COMM	<p>ATF UNICOM ltd hrs O/T tfc 122.8 5NM 4200 ASL</p>



KAMLOOPS VFR TERMINAL PROCEDURES CHART - NIGHT CIRCUIT PROCEDURE

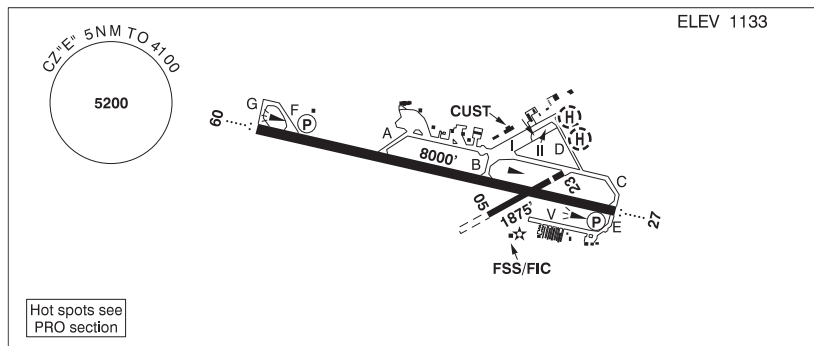


BRITISH COLUMBIA

AERODROME / FACILITY DIRECTORY

KAMLOOPS BC

CYKA



REF	N50 42 09 W120 26 55 5WNW 16°E (2016) UTC-8(7) Elev 1133' A5004 LO2 HI3 CAP RCAP
OPR	Kamloops Aprt Ltd 250-376-3613 Cert
PF	A-1,2,3,6 C-4,5
CUST	AOE/30 1630-0030Z† Mon-Fri exc hols 888-226-7277
FLT PLN	
FIC	Kamloops 866-WXBRIEF (Toll free within Canada) or 866-541-4101 (Toll free within Canada & USA)
WX	METAR H24. TAF H24, issue times: 01, 07, 13, 19Z.
SERVICES	Call out chg may be levied for one or more svcs
FUEL	100LL, JA-1 (FSII avbl)
OIL	80, 100, 120
S	1 (ltd), 2,3,4,5,6 (ltd)
ARFF	DESIGNATED CAT 6 14-08Z†, O/T 2 hr PN 250-376-3233 call out chg
PVT ADV	Shell 123.0 250-376-7633; Executive Flight Centre 122.85 250-376-9069
MIL CON	Executive Flight Centre Fuel 250-376-9069
RWY DATA	Rwy 09(087°)/27(267°) 8000x148 ASPH Rwy 05(045°)/23(225°) 1875x49 ASPH Thld 23 displ 249'.
RWY CERT	Rwy 05/23 AGN I Rwy 09/27 AGN IIIB
TWY CERT	Twy: D, E AGN II
TWY	Twy A, no vehicle ctl first 600' W of Apron I. Twy E: Unlgtd
APRON	Apron 1: Uncontrolled, avbl to sked pax flt only. All acft must yield to acft in pushback from ATB. Prkg fees. Apron II: Uncontrolled, avbl for transient and itinerant prkg. All acft must yield to acft in pushback from ATB. Pilot/pax access via groundside Gate 10 only; no access/egress permitted via ATB. Prkg fees. Apron V: Uncontrolled, PPR for prkg on or within 25' of aprn.
RCR	FSS Win maint 13-08Z† O/T 2 hrs PN cost recovery. CRFI, PCN.
LIGHTING	09-AO(TE ME) P2, 27-AO(TE ME) P2 ARCAL-125.7 type K avbl when FSS clsd PAPI limitation/restriction. PAPI Rwy 09 to be used only within 4NM of thld; PAPI Rwy 27 to be used only within 4NM of thld. Twy D RR.

BRITISH COLUMBIA

AERODROME / FACILITY DIRECTORY

KAMLOOPS BC (Cont'd)

CYKA

COMM	RADIO 125.7 PTC avbl (V) (emerg only 250-376-7941) RCO Pacific rdo 123.375 (FISE) 126.7 (bcst) CLNC DEL 121.9 PTC avbl ltd hrs MF rdo 125.7 5NM 4100 ASL (CAR 602.98) PAL Vancouver Ctr 132.35 133.5 134.4 236.0
NAV	DME IKA 109.3 Ch 30 N50 42 14 W120 27 41 (1136') MT LOLO YKB 117.5 Ch 122 N50 48 03 W120 07 39 (5757') ILS IKA 109.3 (Rwy 09) LOC IPP 109.9 (Rwy 27)
PRO	Pilots should refer to Canadian Airport Charts (CAC) to obtain details on established hot spots, prior to operating on maneuvering areas. CAC are available for free on the NAV CANADA website. Day: rgt hand circuits Rwys 05, 23 & 27 (CAR 602.96). Night: follow VTTC night circuit pro. Tkof and ldg in grass adj rwys by fixed-wing acft not auth.
CAUTION	Migratory bird activity in vic of A/D. Only pilots familiar with lcl terrain should use this aprt dur hrs of darkness. Ngt ops not recommended unless all 6 hazard beacons are oprg. Hi terrain reduces operational length of Rwys 09 and 27 PAPI. Painted & lgtd twr 1253 ASL (128 AGL) aprx 250' beyond Thld 05 and aprox 2710' NW rwy centreline. Fuel facility (tanks 80 AGL) aprx 0.5NM NE A/D; no low alt heli ops.

KAMLOOPS VFR TERMINAL PROCEDURES CHART - NIGHT CIRCUIT PROCEDURE

