
FLIGHT PLAN & SITE SURVEY

B 478-5682 SOUTH SHORE RADIO CONTROL FLYING
CLUB- Greenfield Liverpool Regional Airport

May 23, 2026



IMPORTANT NOTICE

Please ensure you have received all required authorizations prior to flight. This Site Survey was created using RPAS Wilco. The user accepts all responsibility for the accuracy of the information.

Terms & Conditions: rpaswilco.com/#tnc

Mission Information

B 478-5682 SOUTH SHORE RADIO CONTROL FLYING CLUB- GREENFIELD LIVERPOOL REGIONAL AIRPORT

FLIGHT DETAILS

Reference No:	MAAC-478-5682
Project Name:	SOUTH SHORE RADIO CONTROL FLYING CLUB
Pilot Name:	MAAC
Pilot Certificate:	
Mission Type:	VLOS
Flight Start:	May 23, 2026 12:06 AM
Flight End:	May 23, 2026 01:06 AM

LOCATION DETAILS

Flight Address:	Greenfield Liverpool Regional Airport
Latitude:	44° 13' 45.80" N (44.229)
Longitude:	64° 51' 19.55" W (-64.855)
Field Elevation:	322 ft MSL
Altitude / Radius:	400 ft / 926 m (0.5 nm)
Classification:	UNCONTROLLED
FIR / Contact:	CZQM / 506-867-7173

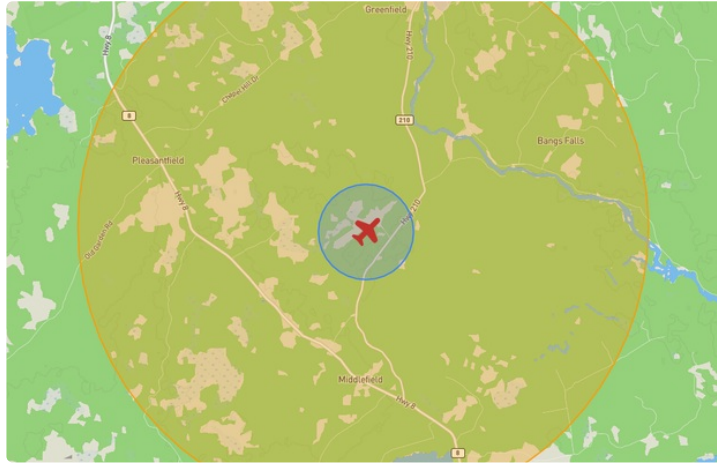
REPORT CONTENTS

Site Survey • Obstacles (if available) • Nearby Aerodromes • Canadian Aviation Regulations • GFA • Aerodrome Supplements • METAR & TAF • NOTAMs • CFS





Flight Map & MODEL Details

MISSION LOCATION SURVEY

FLIGHT AREA MAP



MISSION LOCATION DETAILS

ROLE	LATITUDE	LONGITUDE
 MODEL	44° 13' 45.80" N 44.229	64° 51' 19.55" W -64.855
 Pilot		
 Payload Op.		
 Observer		

Airspace Classification

MISSION LOCATION SURVEY

AIRSPACE MAP



OVERLYING AIRSPACES

Class	Name	Floor	Ceiling
B	Yarmouth, NS [CAE]	12500MSL	18000MSL

NEAREST AERODROMES & DISTANCE FROM OPERATION

SOUTH SHORE REGIONAL (CYAU - AERODROME - Reg)	Lat: 44.23	Long: -64.856	0.113KM	0.061NM	NW
LIVERPOOL (QUEENS GEN HOSPITAL) (CLQ2 - HELIPORT - Cert)	Lat: 44.039	Long: -64.705	24.364KM	13.156NM	SE
DAYSRING AIRPARK (CDY6 - AERODROME - Reg)	Lat: 44.382	Long: -64.457	35.922KM	19.396NM	NE

NOVA SCOTIA

AERODROME / FACILITY DIRECTORY

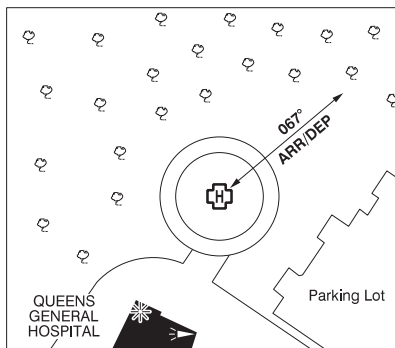
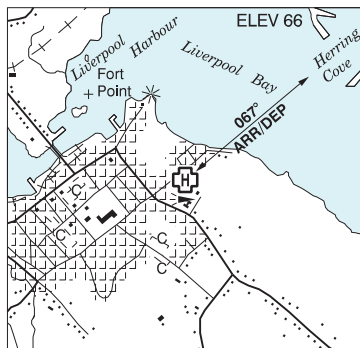
LIVERPOOL / SOUTH SHORE REGIONAL NS

CYAU

REF	N44 13 50 W64 51 22 14NNW 18°W (2013) UTC-4(3) Elev 325' A5003 LO8 RCAP	
OPR	South Shore Flying Club 902-298-2644 Reg	
PF	D-2,3,4,5,6	
FLT PLN		
FIC	London 866-WXBRIEF (Toll free within Canada) or 866-541-4104 (Toll free within Canada & USA)	
ACC	(IFR only) Moncton 506-867-7177 or 866-480-8200.	
SERVICES		
FUEL	100LL 902-877-7340, 902-523-3761, 902-298-2644	
RWY DATA	Rwy 07(071°)/25(251°) 3933x75 ASPH	
RCR	Opr No win maint	
COMM		
ATF	tfc 122.8 5NM 3300 ASL	
ARR	Moncton Ctr 123.9	
DEP	Moncton Ctr 123.9	
CAUTION	P-line aprx 30' high on SW side of apron running NW/SE. Training area around A/D up to 3000 ASL, see VTPC.	

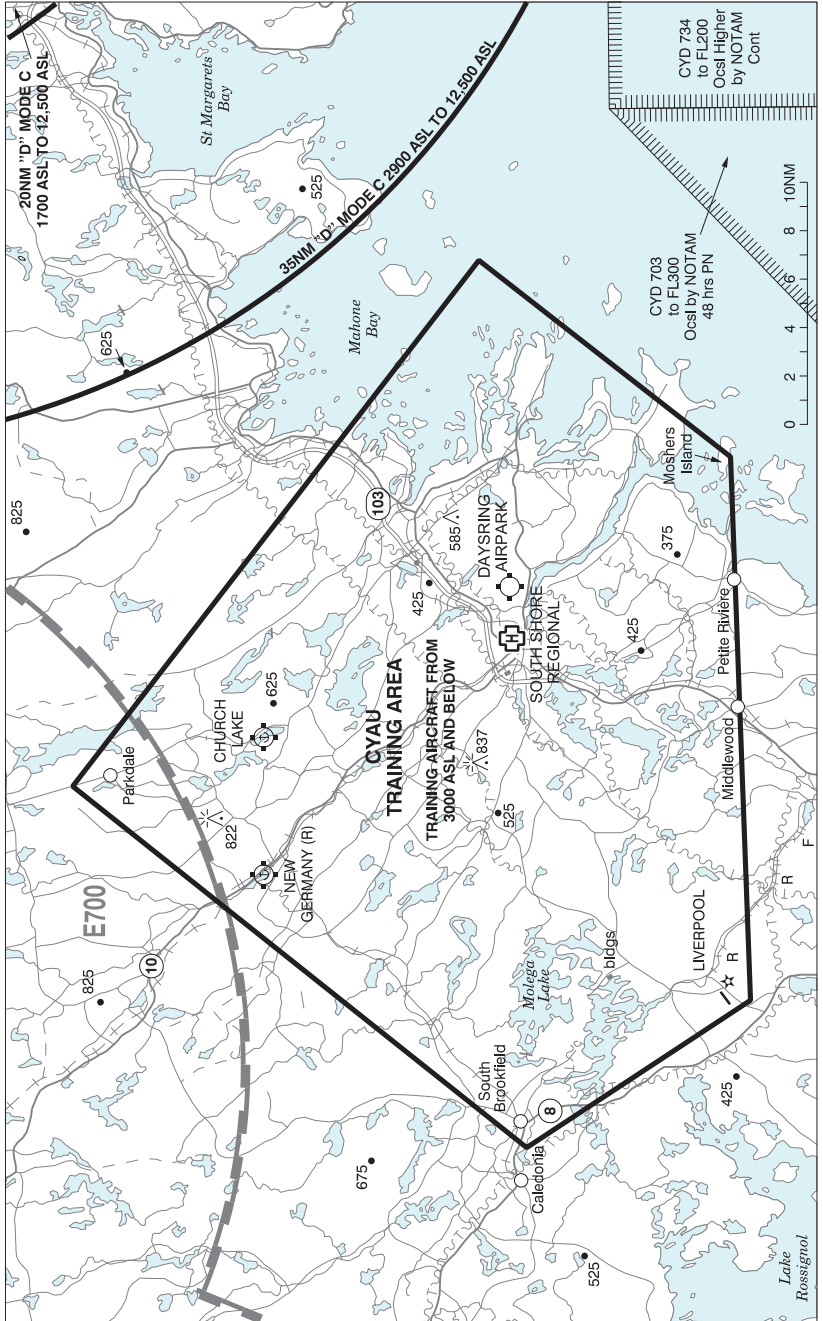
LIVERPOOL (QUEENS GENERAL HOSP) NS (Heli)

CLQ2



REF	N44 02 19 W64 42 19 Adj 17°W (2014) UTC-4(3) Elev 66' A5003
OPR	Queens General Hosp 902-354-3436 Cert PPR
FLT PLN	<p>FIC London 866-WXBRIEF (Toll free within Canada) or 866-541-4104 (Toll free within Canada & USA)</p> <p>ACC (IFR only) Moncton 506-867-7177 or 866-480-8200.</p>
HELI DATA	FATO/TLOF 79' dia ASPH Safety Area 105' dia Max heli overall length 52.5'
LIGHTING	FH
COMM	ATF tfc 123.2 5NM 3000 ASL
PRO	Arr/dep 067° fr heli, slope 12% (H2).
CAUTION	Numerous lamp posts (aprx 21 AGL) in adj pkg lot. Lgtd and marked floodlight lamp post W of pad. Trees in vic of heli. See sketch.

LIVERPOOL VFR TERMINAL PROCEDURES CHART - TRAINING AREA



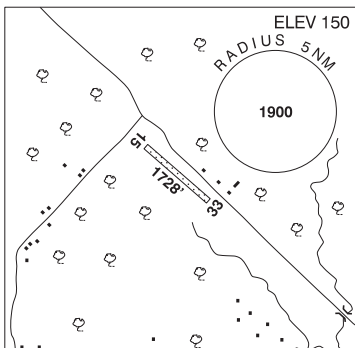
NOVA SCOTIA

AERODROME / FACILITY DIRECTORY

BRIDGEWATER / DAYSRING AIRPARK NS

CDY6

REF	N44 22 55 W64 27 27 1N 17°W (2015) UTC-4(3) Elev 150' VTA A5003
OPR	K Bennett 902-530-2338 or 902-521-1441 Reg PN
FLT PLN	
FIC	London 866-WXBRIEF (Toll free within Canada) or 866-541-4104 (Toll free within Canada & USA)
ACC	(IFR only) Moncton 506-867-7177 or 866-480-8200.
RWY DATA	Rwy 15/33 1728x30 gravel/asphalt mix
RCR	Opr Ltd win maint



COMM	
ATF	tfc 123.2 5NM 3200 ASL
CAUTION	Abrupt drop-off thld Rwy 33. High trees and powerline on apch to Rwy 15. Bridgewater (South Shore Regional hosp) heli 2.3NM W of A/D