
FLIGHT PLAN & SITE SURVEY

F 86-5704 SAULT STE MARIE MODEL AIRPLANE RADIO
CONTROL CLUB- Canadian Bushplane Heritage Centre

May 22, 2026



IMPORTANT NOTICE

Please ensure you have received all required authorizations prior to flight. This Site Survey was created using RPAS Wilco. The user accepts all responsibility for the accuracy of the information.

Terms & Conditions: rpaswilco.com/#tnc

Mission Information

F 86-5704 SAULT STE MARIE MODEL AIRPLANE RADIO CONTROL CLUB- CANADIAN BUSHPLANE HERITAGE CENTRE

FLIGHT DETAILS

Reference No:	MAAC-86-5704
Project Name:	SAULT STE MARIE MODEL AIRPLANE RADIO CONTROL CLUB
Pilot Name:	MAAC
Pilot Certificate:	
Mission Type:	VLOS
Flight Start:	May 22, 2026 11:06 PM
Flight End:	May 23, 2026 12:06 AM

LOCATION DETAILS

Flight Address:	Canadian Bushplane Heritage Centre
Latitude:	46° 30' 16.92" N (46.505)
Longitude:	84° 19' 25.99" W (-84.324)
Field Elevation:	581 ft MSL
Altitude / Radius:	400 ft / 926 m (0.5 nm)
Classification:	UNCONTROLLED
FIR / Contact:	CZYZ / 905-676-4509

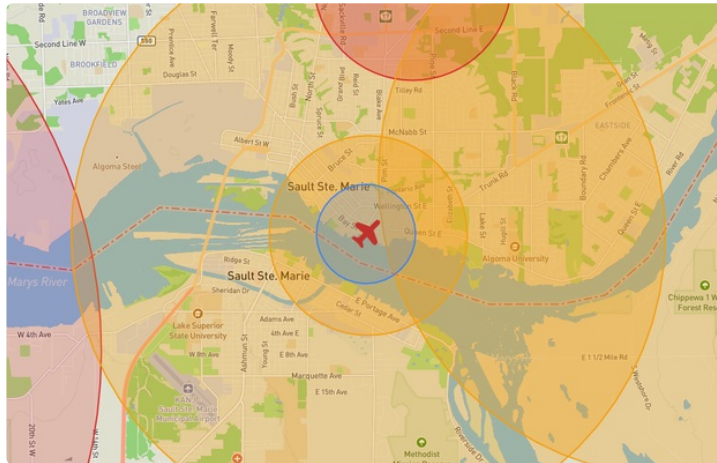
REPORT CONTENTS

Site Survey • Obstacles (if available) • Nearby Aerodromes • Canadian Aviation Regulations • GFA • Aerodrome Supplements • METAR & TAF • NOTAMs • CFS





Flight Map & MODEL Details

MISSION LOCATION SURVEY

FLIGHT AREA MAP



MISSION LOCATION DETAILS

ROLE	LATITUDE	LONGITUDE
 MODEL	46° 30' 16.92" N 46.505	84° 19' 25.99" W -84.324
 Pilot		
 Payload Op.		
 Observer		

Airspace Classification

MISSION LOCATION SURVEY

AIRSPACE MAP



OVERLYING AIRSPACES

Class	Name	Floor	Ceiling
E	Southern Ontario Low Level Control Area f) [CAE]	3500MSL	18000MSL
E	Sault Ste. Marie, ON [TA]	700AGL	18000MSL
E	V300-2 VHF/UHF Airway	2200AGL	18000MSL
D	Sault Ste. Marie, ON [CZ]	SFC	3000MSL
E	Sault Ste. Marie, ON [CAE]	2800AGL	18000MSL
E	T608 Fixed RNAV Route	2200AGL	18000MSL
E	T616 Fixed RNAV Route	2200AGL	18000MSL
E	T675 Fixed RNAV Route	2200AGL	18000MSL
E	T776 Fixed RNAV Route	2200AGL	18000MSL
E	T810 Fixed RNAV Route	2200AGL	18000MSL

NEAREST AERODROMES & DISTANCE FROM OPERATION

SAULT STE. MARIE (CPX8 - WATERDROME - Reg)	Lat: 46.504	Long: -84.323	0.051KM	0.028NM	SE
SAULT STE. MARIE (CNR3 - HELIPORT - Reg)	Lat: 46.504	Long: -84.323	0.051KM	0.028NM	SE
PARTRIDGE POINT (CPP9 - WATERDROME - Reg)	Lat: 46.514	Long: -84.248	5.877KM	3.173NM	E

CANADA WATER AERODROME SUPPLEMENT

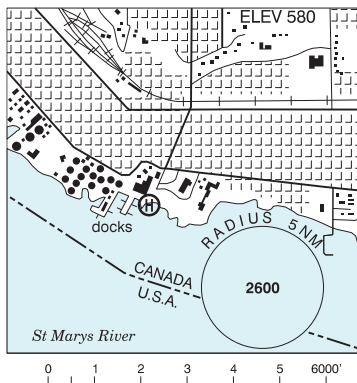
Effective 0901Z 19 March 2026 to 0901Z 18 February 2027

B230 AERODROME/FACILITY DIRECTORY

SAULT STE. MARIE ON

CPX8

REF	N46 30 16 W84 19 24 Adj S 7°W UTC-5(4) Elev 580' A5001
OPR	Cdn Bushplane Heritage Centre 705-945-6242 Reg
PF	B1 avbl 13-22Z‡ C-2,3,4,5,6
FLT PLN	FIC London 866-WXBRIEF (Toll free within Canada) or 866-541-4104 (Toll free within Canada & USA)
SERVICES	12-23Z May-Oct
FUEL	100LL PN Humphrey Aviation Service 705-542-2590
S	1,2,3,4,5
A/D DATA	Open water May-Nov. Current 5 kt, ramp, slipway
LIGHTING	Floodlit 24 hrs.
COMM	ATF tfc 122.7 2NM 3000 ASL
PRO	See Sault Ste. Marie VTPC.
CAUTION	Co-ltd heliport, helipads aprx 200' E of docks. High lvl of tfc in vic Sault, Michigan aprt, also on 122.7. Ramp usage is dependent on lvl of St. Mary's River. Ctc opr.



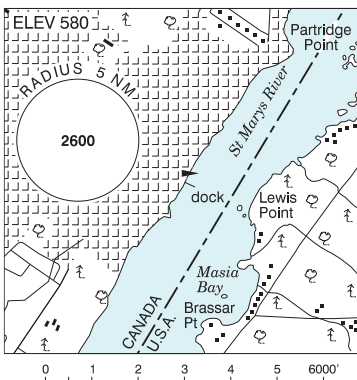
SAULT STE. MARIE FSS-RCO

London 119.4 (RAAS) 0345-1120Z‡ (N43 01 W81 09)

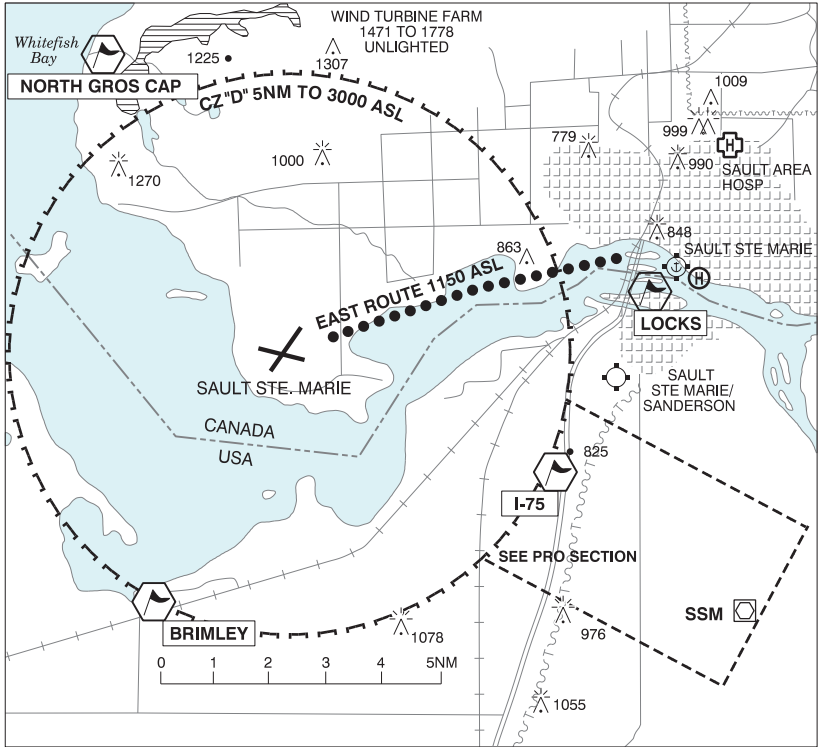
SAULT STE. MARIE / PARTRIDGE POINT ON

CPP9

REF	N46 30 51 W84 14 54 Adj E 7°W (2023) UTC-5(4) Elev 580' A5001
OPR	Mark Dick 705-257-8587 Reg PPR
PF	C-1,2,3,4,5,6,7
FLT PLN	FIC London 866-WXBRIEF (Toll free within Canada) or 866-541-4104 (Toll free within Canada & USA)
A/D DATA	Open water May-Nov.
DOCKS	Ltd moorings (no long-term parking), beach, ramp
COMM	ATF tfc 122.7 2NM 3600 ASL
CAUTION	Heavy boat tfc in St. Mary's River. Heavy tfc vic Sault Michigan aprt.

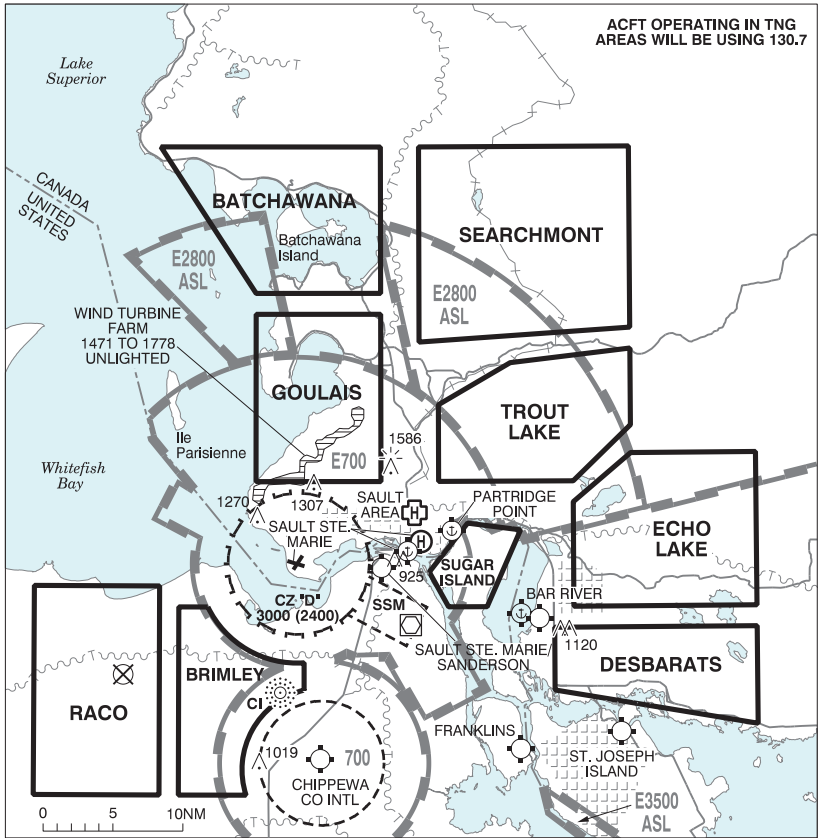


SAULT STE. MARIE VFR TERMINAL PROCEDURES CHART



NAME	IDENT	LAT/LONG
BRIMLEY	VCBRM	N46° 24' 45" W084° 34' 00"
I-75	VCISF	N46° 26' 00" W084° 23' 36"
LOCKS	VCLKS	N46° 30' 12" W084° 21' 18"
NORTH GROS CAP	VCNGC	N46° 34' 30" W084° 35' 30"

SAULT STE. MARIE VFR TERMINAL PROCEDURES CHART - TRAINING AREAS



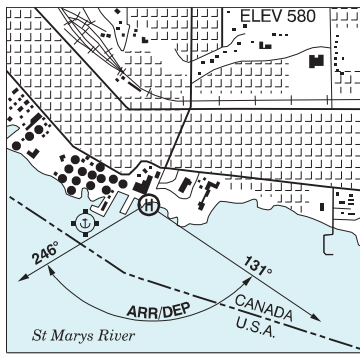
ONTARIO

AERODROME / FACILITY DIRECTORY

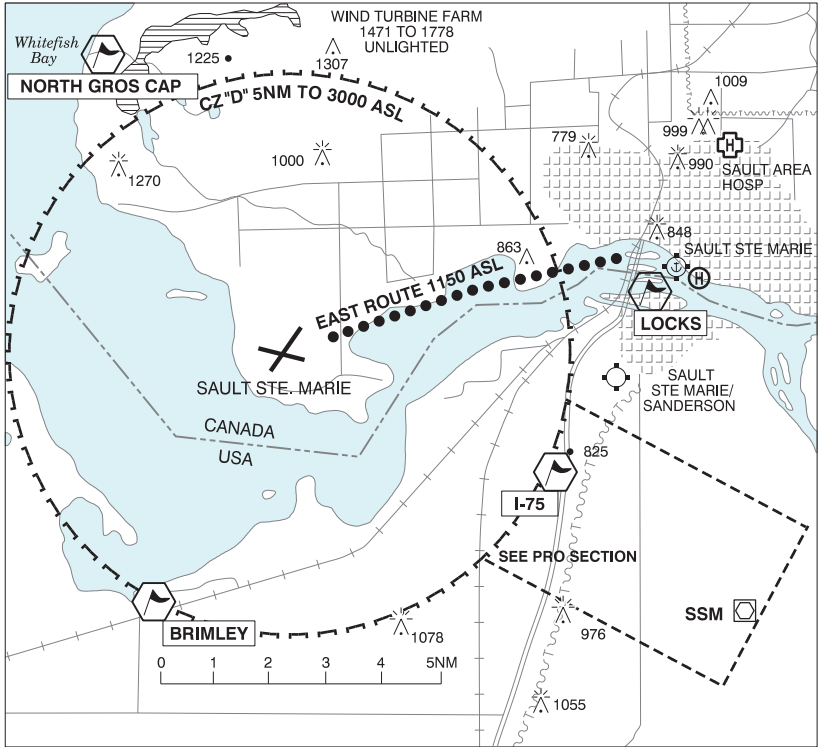
SAULT STE. MARIE ON (Heli)

CNR3

REF	N46 30 16 W84 19 24 Adj S 7°W UTC-5(4) Elev 580' A5001
OPR	Canadian Bushplane Heritage Centre 705-945-6242 Reg
PF	B1 avbl 13-22Z‡ C-2,3,4,5,6
FLT PLN	FIC London 866-WXBRIEF (Toll free within Canada) or 866-541-4104 (Toll free within Canada & USA)
SERVICES	13-22Z‡ May-Oct, dawn til dusk Nov-Apr
FUEL	100LL Humphrey Aviation Services 705-542-2590
HELI DATA	57' dia concrete
RCR	Opr
LIGHTING	Floodlit Apron; Aiming point lighting, 6 red lgts.
COMM	ATF tfc 122.7 2NM 3000 ASL
PRO	Arr/dep btwn 131°-246° fr heli. Arr/dep hover area & aiming point lctd S of pad.
CAUTION	Co-located water aerodrome, docks just W of helipads. Hi lvl of tfc in vic Sault, Michigan aprt, also on 122.7

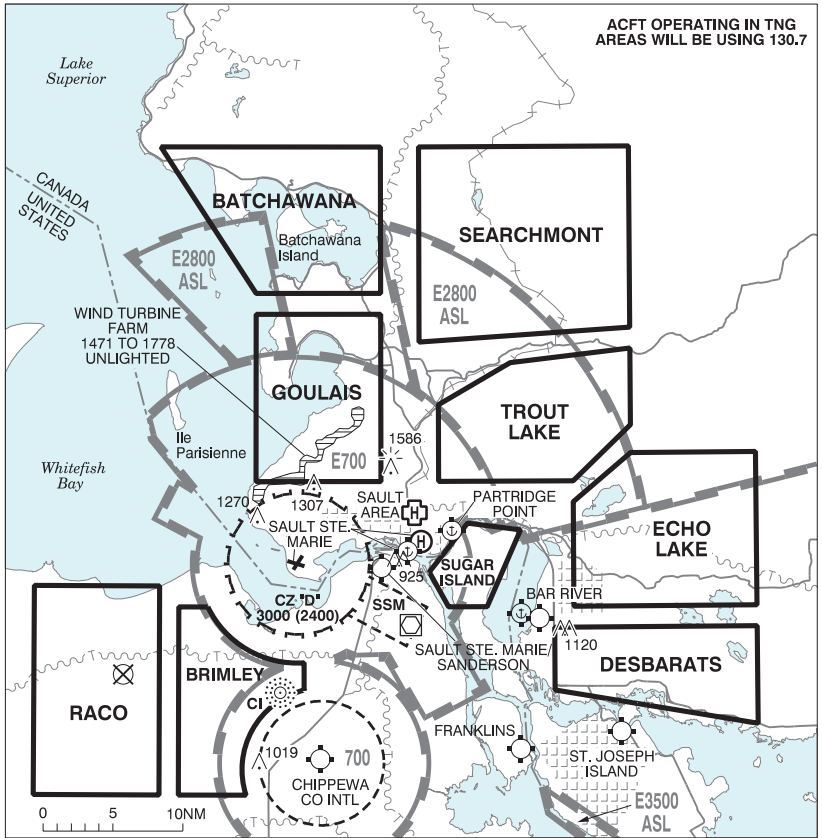


SAULT STE. MARIE VFR TERMINAL PROCEDURES CHART



NAME	IDENT	LAT/LONG
BRIMLEY	VCBRM	N46° 24' 45" W084° 34' 00"
I-75	VCISF	N46° 26' 00" W084° 23' 36"
LOCKS	VCLKS	N46° 30' 12" W084° 21' 18"
NORTH GROS CAP	VCNGC	N46° 34' 30" W084° 35' 30"

SAULT STE. MARIE VFR TERMINAL PROCEDURES CHART - TRAINING AREAS



CANADA WATER AERODROME SUPPLEMENT

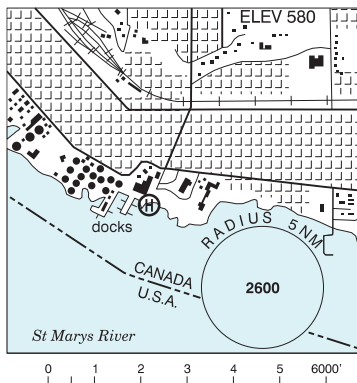
Effective 0901Z 19 March 2026 to 0901Z 18 February 2027

B230 AERODROME/FACILITY DIRECTORY

SAULT STE. MARIE ON

CPX8

REF	N46 30 16 W84 19 24 Adj S 7°W UTC-5(4) Elev 580' A5001
OPR	Cdn Bushplane Heritage Centre 705-945-6242 Reg
PF	B1 avbl 13-22Z‡ C-2,3,4,5,6
FLT PLN	FIG London 866-WXBRIEF (Toll free within Canada) or 866-541-4104 (Toll free within Canada & USA)
SERVICES	12-23Z May-Oct
FUEL	100LL PN Humphrey Aviation Service 705-542-2590
S	1,2,3,4,5
A/D DATA	Open water May-Nov. Current 5 kt, ramp, slipway
LIGHTING	Floodlit 24 hrs.
COMM	ATF tfc 122.7 2NM 3000 ASL
PRO	See Sault Ste. Marie VTPC.
CAUTION	Co-lc'd heliport, helipads aprx 200' E of docks. High lvl of tfc in vic Sault, Michigan aprt, also on 122.7. Ramp usage is dependent on lvl of St. Mary's River. Ctc opr.



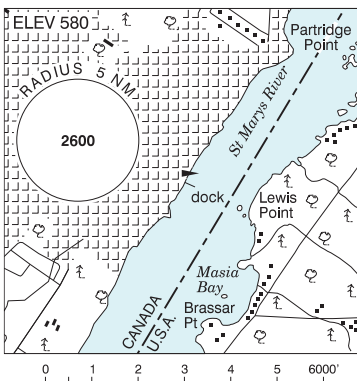
SAULT STE. MARIE FSS-RCO

London 119.4 (RAAS) 0345-1120Z‡ (N43 01 W81 09)

SAULT STE. MARIE / PARTRIDGE POINT ON

CPP9

REF	N46 30 51 W84 14 54 Adj E 7°W (2023) UTC-5(4) Elev 580' A5001
OPR	Mark Dick 705-257-8587 Reg PPR
PF	C-1,2,3,4,5,6,7
FLT PLN	FIG London 866-WXBRIEF (Toll free within Canada) or 866-541-4104 (Toll free within Canada & USA)
A/D DATA	Open water May-Nov.
DOCKS	Ltd moorings (no long-term parking), beach, ramp
COMM	ATF tfc 122.7 2NM 3600 ASL
CAUTION	Heavy boat tfc in St. Mary's River. Heavy tfc vic Sault Michigan aprt.



CANADA WATER AERODROME SUPPLEMENT

Effective 0901Z 19 March 2026 to 0901Z 18 February 2027

AERODROME/FACILITY DIRECTORY B231

SAVANT LAKE (STURGEON LAKE) ON

CJP3

REF	N50 12 W90 41 3.5SE 2°W UTC-6(5) Elev 1342' A5008	
OPR	Rusty Myers Flying Svc Ltd 807-788-5224 May-Oct or 866-707-7637 Reg	
PF	B-1	
FLT PLN	Pilots to open/close VFR flt plan with London rdo, FISE or by phone FIC London 866-WXBRIEF (Toll free within Canada) or 866-541-4104 (Toll free within Canada & USA)	
SERVICES	FUEL 100LL (D), JA-1 OIL All S 5	
A/D DATA	Open water mid May-Oct. Sand bottom, dock & beach.	
COMM	ATF tfc 122.8 5NM 4400 ASL	
CAUTION	Twr 1700 ASL 2.5NM NE. Small boat tfc. Reef SE.	

SAWDUST BAY ON — See NOBEL / SAWDUST BAY