
FLIGHT PLAN & SITE SURVEY

F 87-5705 SUDBURY MODEL AIRCRAFT CLUB- Hanmer High
School

May 22, 2026



IMPORTANT NOTICE

Please ensure you have received all required authorizations prior to flight. This Site Survey was created using RPAS Wilco. The user accepts all responsibility for the accuracy of the information.

Terms & Conditions: rpswilco.com/#tnc

Mission Information

F 87-5705 SUDBURY MODEL AIRCRAFT CLUB- HANMER HIGH SCHOOL

FLIGHT DETAILS

Reference No:	MAAC-87-5705
Project Name:	SUDBURY MODEL AIRCRAFT CLUB
Pilot Name:	MAAC
Pilot Certificate:	
Mission Type:	VLOS
Flight Start:	May 22, 2026 11:06 PM
Flight End:	May 23, 2026 12:06 AM

LOCATION DETAILS

Flight Address:	Hanmer High School
Latitude:	46° 39' 32.76" N (46.659)
Longitude:	80° 56' 37.38" W (-80.944)
Field Elevation:	988 ft MSL
Altitude / Radius:	400 ft / 926 m (0.5 nm)
Classification:	UNCONTROLLED
FIR / Contact:	CZYZ / 905-676-4509

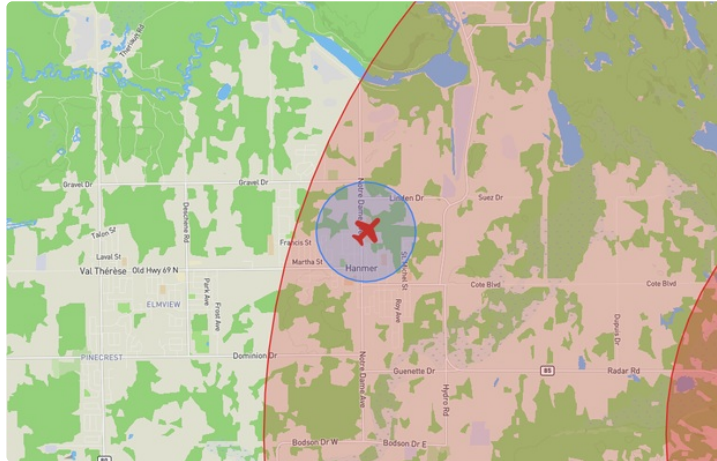
REPORT CONTENTS

Site Survey • Obstacles (if available) • Nearby Aerodromes • Canadian Aviation Regulations • GFA • Aerodrome Supplements • METAR & TAF • NOTAMs • CFS





Flight Map & MODEL Details

MISSION LOCATION SURVEY

FLIGHT AREA MAP



MISSION LOCATION DETAILS

ROLE	LATITUDE	LONGITUDE
 MODEL	46° 39' 32.76" N 46.659	80° 56' 37.38" W -80.944
 Pilot		
 Payload Op.		
 Observer		

Airspace Classification

MISSION LOCATION SURVEY

AIRSPACE MAP



OVERLYING AIRSPACES

Class	Name	Floor	Ceiling
E	Southern Ontario Low Level Control Area f) [CAE]	3500MSL	18000MSL
E	Sudbury, ON [CZ]	SFC	4000MSL
E	Sudbury, ON [TA]	2400AGL	18000MSL
E	T656 Fixed RNAV Route	2200AGL	18000MSL

NEAREST AERODROMES & DISTANCE FROM OPERATION

SUDBURY (CYSB - AERODROME - Cert)	Lat: 46.625	Long: -80.798	11.759KM	6.349NM	E
RAMSEY LAKE (CNB8 - WATERDROME - Reg)	Lat: 46.487	Long: -80.959	19.209KM	10.372NM	S
AZILDA (CNC5 - WATERDROME - Reg)	Lat: 46.533	Long: -81.133	20.136KM	10.873NM	SW

ONTARIO

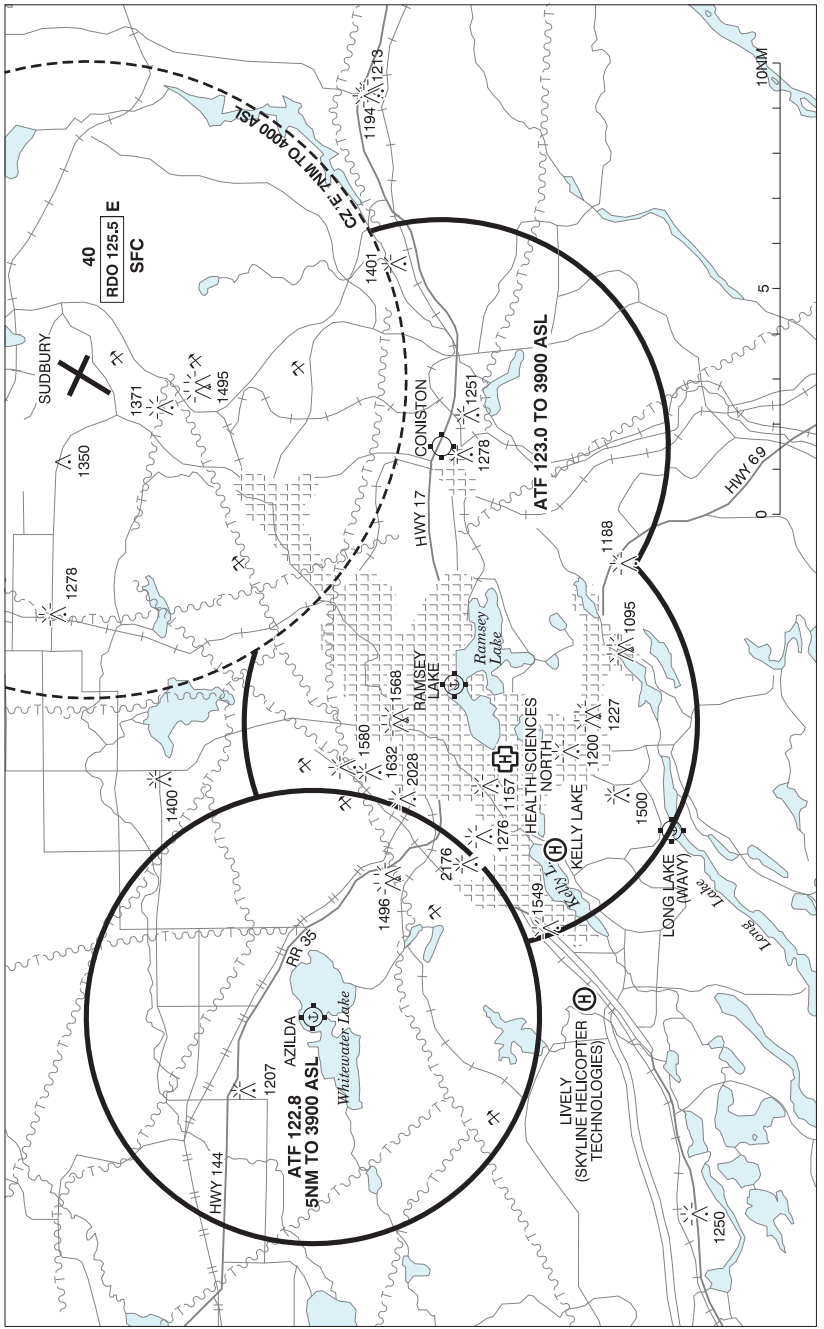
AERODROME / FACILITY DIRECTORY

SUDBURY ON

CYSB

REF	N46 37 32 W80 47 52 11NE 10°W (2012) UTC-5(4) Elev 1143' A5000 A5001 LO4 HI4 HI5 CAP	
OPR	Muni 705-693-2514 Cert	
PF	A-1,2,3,6,7 C-4,5	
CUST	AOE/15 888-226-7277 1330-2130Z± Mon-Fri exc hols	
FLT PLN	Pilots to open/close VFR flt plan with London rdo, FISE or by phone.	
FIG	London 866-WXBRIEF (Toll free within Canada) or 866-541-4104 (Toll free within Canada & USA)	
WX	METAR H24. TAF H24, issue times: 02, 08, 14 & 20Z.	
SERVICES	Call out chg may be levied for one or more svcs.	
FUEL	100LL, JA-1 (FSII avbl), HPR	
OIL	All	
S	1,2,3	
ARFF	PARTICIPATING CAT 5 (CAT 7 3 hrs PN) 1100-0400Z± O/T PN call out chg.	
SUP FL	D & A-ice	
PVT ADV	Northern Aviation Services/Shell 122.95 705-693-2972 12-02Z± Mon-Fri, 13-01Z± Sat-Sun Page 24 hrs 705-671-6945; Executive Aviation Fuels Ltd/World Fuels Service 122.35 0900-0100Z± O/T 705-699-0079 or 705-822-6585	
MIL CON	Executive Aviation 519-453-5370	
RWY DATA	Rwy 04(040°)/22(220°) 6600x150 ASPH Rwy 12(116°)/30(296°) 5000x150 ASPH Rwy 12 Up 0.3%	
RWY CERT	Rwy 04 RVR 1200(1/4sm)/Rwy 22 RVR 1200(1/4sm) AGN IV Rwy 12/30 AGN IV	
TWY CERT	Twy D AGN IIIB	
APRON	Apron I rstd to sked commercial air carrier by stand assignment only fr Greater Sudbury Airport. Apron III itinerant acft parking to be arranged through PVT ADV.	
RCR	Opr RSC/CRFI & win maint avbl 11-04Z± O/T 8 hrs PN, call out chg. PCN	
LIGHTING	04-AO(TE HI) P2, 22-AN(TE HI), 12-AO(TE ME) P2, 30-AO(TE ME) P2	
COMM		
RADIO	125.5 (V) (emerg only 705-693-3661)	
RCO	London rdo 123.475 (FISE) 126.7(bcst)	
ATIS	127.4	
CLNC DEL	121.8 PTC avbl	
MF	rdo 125.5 7NM 4000 ASL (CAR 602.98)	
PAL	Toronto Ctr 135.5	
NAV		
DME	YSB 112.3 Ch 70 N46 37 45 W80 47 54 (1171')	
ILS	ISB 110.3 (Rwy 22) RVR	
PRO	Rgt hand circuits Rwy 22 & 30 (CAR 602.96).	
CAUTION	Extv float/ski/helicopter tfc in vic Azilda, ATF 122.8 and Coniston A/D 8NM S, ATF 123.0.	

SUBSBURY VFR TERMINAL PROCEDURES CHART



CANADA WATER AERODROME SUPPLEMENT

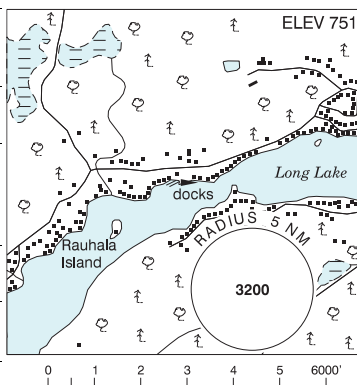
Effective 0901Z 19 March 2026 to 0901Z 18 February 2027

AERODROME/FACILITY DIRECTORY B253

SUDBURY / LONG LAKE (WAVY) ON

CLL6

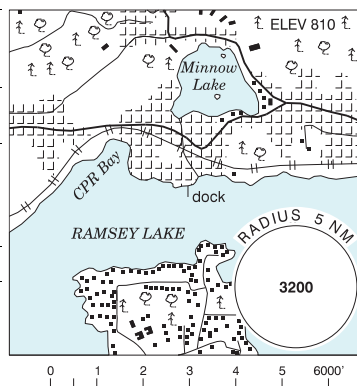
REF	N46 24 21 W81 01 57 5.4SSW 10°W (2023) UTC-5(4) Elev 751' A5000 A5001
OPR	Fisher Wavy Inc. 705-688-4411 Reg PPR
FLT PLN	FIC London 866-WXBRIEF (Toll free within Canada) or 866-541-4104 (Toll free within Canada & USA)
A/D DATA	Open water Apr-Nov. Ski ops dur win months, no win maint.
COMM	ATF tfc 122.8 5NM 3900 ASL
CAUTION	Heavy boat tfc during sum. Heavy snowmobile/vehicle tfc dur win.



SUDBURY / RAMSEY LAKE ON

CNB8

REF	N46 29 12 W80 57 32 1.4ESE 10°W (2018) UTC-5(4) Elev 810' A5000 A5001
OPR	David Chisholm 705-662-1609 Reg PPR
FLT PLN	FIC London 866-WXBRIEF (Toll free within Canada) or 866-541-4104 (Toll free within Canada & USA)
A/D DATA	Open water May-Nov
COMM	ATF tfc 123.0 5NM centred on Sudbury (Health Sciences North) 1.9NM WSW 4000 ASL, excluding the Azilda ATF area
CAUTION	Extv float/ski/helicopter tfc in vic Azilda, ATF 122.8. See Sudbury VTPC.



CANADA WATER AERODROME SUPPLEMENT

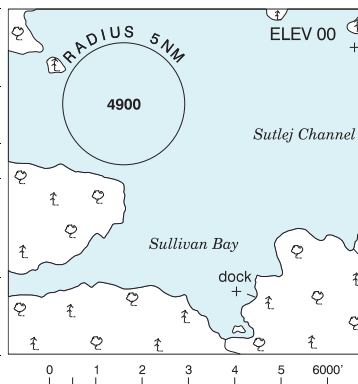
Effective 0901Z 19 March 2026 to 0901Z 18 February 2027

B254 AERODROME/FACILITY DIRECTORY

SULLIVAN BAY BC

CAV5

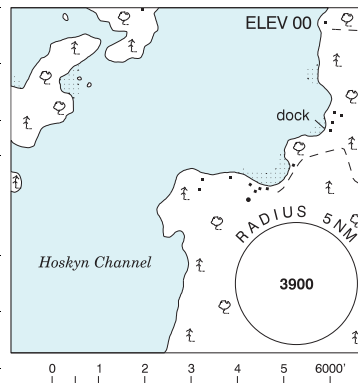
REF	N50 53 08 W126 49 37 Adj N 18°E (2014) UTC-8(7) Elev 00' A5004
OPR	Broughton Island Ventures Ltd 604-484-9193 Reg
PF	B-1,2 D-3,4,5,6 (15 May-1 Oct)
FLT PLN	FIG Kamloops 866-WXBRIEF (Toll free within Canada) or 866-541-4101 (Toll free within Canada & USA)
SERVICES	FUEL MG-2 S 4,5
COMM	ATF tfc 123.2 2NM 1500 ASL
CAUTION	Extensive boat activity in area.



SURGE NARROWS BC

CAG9

REF	N50 13 W125 07 Adj NW 18°E (2012) UTC-8(7) Elev 00' A5004
OPR	Strathcona Regional District 877-830-2990 Reg
PF	B-1
FLT PLN	FIG Kamloops 866-WXBRIEF (Toll free within Canada) or 866-541-4101 (Toll free within Canada & USA)
SERVICES	S 7
COMM	ATF tfc 123.2 2NM 1500 ASL
NAV	NDB CAMPBELL RIVER YBL 203 (LZ) N50 00 23 W125 21 27
CAUTION	Moderate current at dock under certain tidal cond. A/D within CYA 112(A) to 4500 cont days.



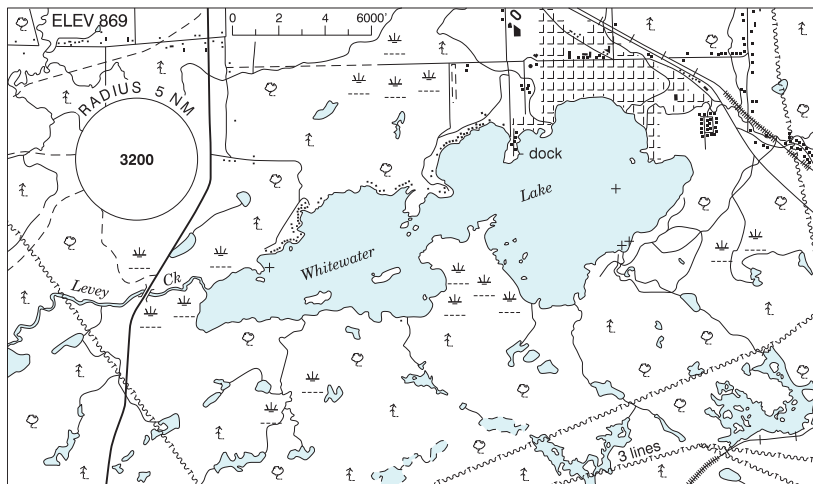
CANADA WATER AERODROME SUPPLEMENT

Effective 0901Z 19 March 2026 to 0901Z 18 February 2027

B252 AERODROME/FACILITY DIRECTORY

SUDBURY / AZILDA ON

CNC5



REF	N46 32 W81 08 5NW Sudbury 10°W UTC-5(4) Elev 869' A5000 A5001
OPR	True North Airways 705-983-4255 Reg
PF	B-1 C-2,3,4,5 D-6
FLT PLN	
FIC	London 866-WXBRIEF (Toll free within Canada) or 866-541-4104 (Toll free within Canada & USA)
SERVICES	
FUEL	100LL, JA
OIL	W100, 15W50
S	2,3,4,5,6
A/D DATA	Open water May-mid Nov. N-S & E-W rwys marked on snow packed ice mid Dec-mid Apr ctc Opr.
COMM	
RCO	London rdo 123.475 (FISE) 126.7 (bcst)
ATF	Whitewater UNICOM 13-22Z± O/T tfc 122.8 5NM 3900 ASL
NAV	
DME	YSB 112.3 Ch 70 N46 37 45 W80 47 54
CAUTION	Lgtd twrs to 2044 ASL 5.2NM SE. Lgtd twr to 1305 ASL 1.8NM E. White painted water twr 0.5NM N on top of hill, hgt unknown. Twr 1226 ASL 2.3NM NW. Extv float/ski/heli tfc in vic of Sudbury Hosp heli (CSL8) and Coniston (CSC9).

CANADA WATER AERODROME SUPPLEMENT

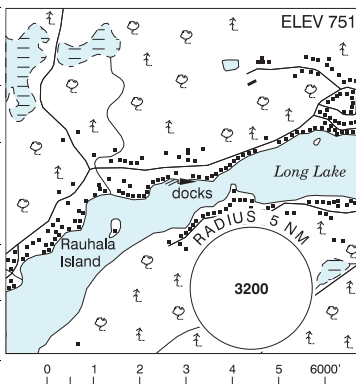
Effective 0901Z 19 March 2026 to 0901Z 18 February 2027

AERODROME/FACILITY DIRECTORY B253

SUDBURY / LONG LAKE (WAVY) ON

CLL6

REF	N46 24 21 W81 01 57 5.4SSW 10°W (2023) UTC-5(4) Elev 751' A5000 A5001
OPR	Fisher Wavy Inc. 705-688-4411 Reg PPR
FLT PLN	FIG London 866-WXBRIEF (Toll free within Canada) or 866-541-4104 (Toll free within Canada & USA)
A/D DATA	Open water Apr-Nov. Ski ops dur win months, no win maint.
COMM	ATF tfc 122.8 5NM 3900 ASL
CAUTION	Heavy boat tfc during sum. Heavy snowmobile/vehicle tfc dur win.



SUDBURY / RAMSEY LAKE ON

CNB8

REF	N46 29 12 W80 57 32 1.4ESE 10°W (2018) UTC-5(4) Elev 810' A5000 A5001
OPR	David Chisholm 705-662-1609 Reg PPR
FLT PLN	FIG London 866-WXBRIEF (Toll free within Canada) or 866-541-4104 (Toll free within Canada & USA)
A/D DATA	Open water May-Nov
COMM	ATF tfc 123.0 5NM centred on Sudbury (Health Sciences North) 1.9NM WSW 4000 ASL, excluding the Azilda ATF area
CAUTION	Extv float/ski/helicopter tfc in vic Azilda, ATF 122.8. See Sudbury VTPC.

