

---

# FLIGHT PLAN & SITE SURVEY

---

C 530-5727 KAMLOOPS MODEL AIRPLANE SOCIETY-  
Goose Lake

May 22, 2026



**IMPORTANT NOTICE**

Please ensure you have received all required authorizations prior to flight. This Site Survey was created using RPAS Wilco. The user accepts all responsibility for the accuracy of the information.

Terms & Conditions: [rpaswilco.com/#tnc](https://rpaswilco.com/#tnc)

# Mission Information

C 530-5727 KAMLOOPS MODEL AIRPLANE SOCIETY- GOOSE LAKE

## FLIGHT DETAILS

Reference No:	<b>MAAC-530-5727</b>
Project Name:	<b>KAMLOOPS MODEL AIRPLANE SOCIETY</b>
Pilot Name:	<b>MAAC</b>
Pilot Certificate:	
Mission Type:	<b>VLOS</b>
Flight Start:	<b>May 22, 2026 08:06 PM</b>
Flight End:	<b>May 22, 2026 09:06 PM</b>

## LOCATION DETAILS

Flight Address:	<b>Goose Lake</b>
Latitude:	<b>50° 35' 2.02" N ( 50.584 )</b>
Longitude:	<b>120° 23' 28.13" W ( -120.391 )</b>
Field Elevation:	<b>3189 ft MSL</b>
Altitude / Radius:	<b>400 ft / 926 m ( 0.5 nm )</b>
Classification:	<b>UNCONTROLLED</b>
FIR / Contact:	<b>CZVR / 604-586-4500</b>

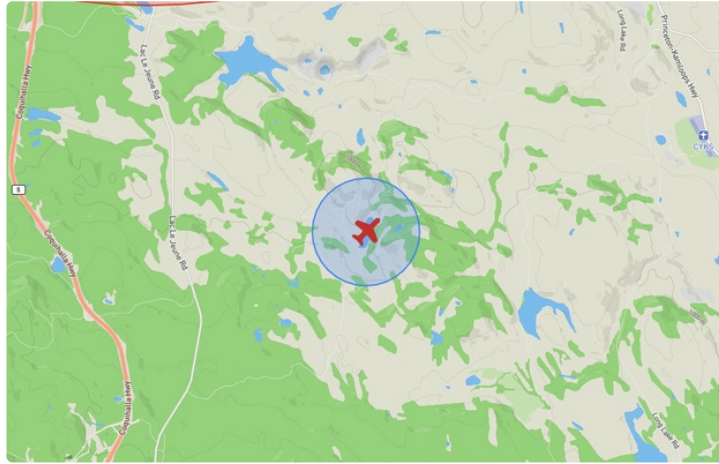
## REPORT CONTENTS

Site Survey • Obstacles (if available) • Nearby Aerodromes • Canadian Aviation Regulations • GFA • Aerodrome Supplements • METAR & TAF • NOTAMs • CFS





# Flight Map & MODEL Details

MISSION LOCATION SURVEY

## FLIGHT AREA MAP



## MISSION LOCATION DETAILS

ROLE	LATITUDE	LONGITUDE
 MODEL	50° 35' 2.02" N 50.584	120° 23' 28.13" W -120.391
 Pilot		
 Payload Op.		
 Observer		

# Airspace Classification

MISSION LOCATION SURVEY

## AIRSPACE MAP



## OVERLYING AIRSPACES

Class	Name	Floor	Ceiling
E	T695 Fixed RNAV Route	2200AGL	18000MSL
E	T611 Fixed RNAV Route	2200AGL	18000MSL
E	Kamloops, BC [CZ]	SFC	3000GND
F	CYR 6.1.0-6 KAMLOOPS REGIONAL CORRECTIONAL CENTRE, BC	SFC	3300MSL
E	Kamloops, BC [TA]	700AGL	18000MSL
E	T650 Fixed RNAV Route	2200AGL	18000MSL
E	T687 Fixed RNAV Route	2200AGL	18000MSL
E	T789 Fixed RNAV Route	2200AGL	18000MSL
E	3.1.1-18 [TA]	1600AGL	18000MSL
E	3.1.2-47 [CAE]	8000AGL	18000MSL
E	T799 Fixed RNAV Route	2200AGL	18000MSL

## NEAREST AERODROMES & DISTANCE FROM OPERATION

KAMLOOPS (CAH7 - WATERDROME - Reg)	Lat: 50.7	Long: -120.433	13.249KM	7.154NM	N
KAMLOOPS (CYKA - AERODROME - Cert)	Lat: 50.703	Long: -120.448	13.791KM	7.447NM	N
KAMLOOPS (ROYAL INLAND HOSPITAL) (CBC4 - HELIPORT - Cert)	Lat: 50.669	Long: -120.333	10.309KM	5.566NM	NE

# CANADA WATER AERODROME SUPPLEMENT

Effective 0901Z 19 March 2026 to 0901Z 18 February 2027

AERODROME/FACILITY DIRECTORY B91

**ISLAND VIEW ON** — See LAKE SCUGOG / ISLAND VIEW

**JENKINS COVE NB** — See KARS / JENKINS COVE

**JENNY'S LANDING ON** — See KENNISIS LAKE / JENNNY'S LANDING

**JOHN'S BAY ON** — See LAKE ROSSEAU / JOHN'S BAY

**KAMANISKEG LAKE ON** — See COMBERMERE / KAMANISKEG LAKE

## KAMLOOPS BC

CAH7

<b>REF</b>	N50 42 W120 26 3WNW 17°E (2013) UTC-8(7) Elev 1129' A5004	
<b>OPR</b>	Kamloops Aprt Ltd 250-376-3613 Reg	
<b>PF</b>	A-1,2,3,6 C-4,5 at adj land A/D	
<b>CUST</b>	AOE/15 16-08Z† 888-226-7277	
<b>FLT PLN</b>	<b>FIG</b> Kamloops 866-WXBRIEF (Toll free within Canada) or 866-541-4101 (Toll free within Canada & USA)	
<b>SERVICES</b>	Float cart chg. Call out chg may be levied for one or more svcs. Mountaineer Svc 250-376-3800, Spring Avn 250-554-2616.	
<b>FUEL</b>	100LL, JA-1 avbl at adj A/D, acft removal fr water rqrd, refuelling at dock proh.	
<b>OIL</b>	Shell 250-376-7633 or 250-819-9345 PN. Executive Flight Centre 250-376-9069.	
<b>S</b>	80, 100, 120 1 (ltd), 2, 3 (at adj land A/D), 5	
<b>A/D DATA</b>	Open water Apr-mid Nov. Depth 12', sand bottom, current 5 kt. Spring freshets raise water level by 12'. Buoys, ramp & beach.	
<b>COMM</b>	<b>RADIO</b> 125.7 297.0 (V) (emerg only 250-376-7941) <b>RCO</b> Pacific rdo 123.375 (FISE) 126.7 (bcst) <b>MF</b> rdo 125.7 5NM 4100 ASL centred on land A/D (CAR 602.98)	
<b>PRO</b>	Seaplane conform to land A/D tfc pattern: Rgt hand circuits Rwsy 04, 22 & 27 (CAR 602.96). E departures climb to 2200 ASL or river junction before turning N.	
<b>CAUTION</b>	Migratory bird activity in vic of A/D. Seasonal boat tfc. Dur low water sand bars hazardous; oprg channel swings from N side of river E of dock, to S side W of dock. Adj land A/D. Class "E" CZ to 5NM radius, 4100 ASL (2900 AGL).	

## KAMLOOPS FIG - RCO

Cross reference to PACIFIC RADIO - RCO (New)

# CANADA WATER AERODROME SUPPLEMENT

Effective 0901Z 19 March 2026 to 0901Z 18 February 2027

## B92 AERODROME/FACILITY DIRECTORY

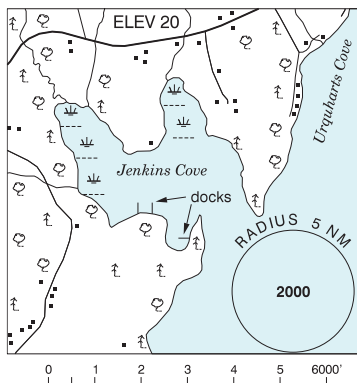
### KAMLOOPS FSS – RCO

Victoria 119.7 (RAAS) 08-14Z† (N48 38 W123 25)

### KARS / JENKINS COVE NB

CJO3

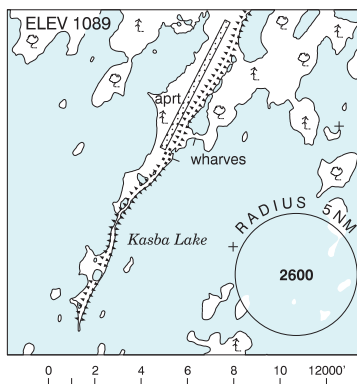
<b>REF</b>	N45 35 38 W65 57 25 1.3ESE 17°W (2017) UTC-4(3) Elev 20' A5003
<b>OPR</b>	Richard Pattie 506-485-1122 Reg
<b>PF</b>	B-1 C-2,5
<b>FLT PLN</b>	<p><b>FIG</b> London 866-WXBRIEF (Toll free within Canada) or 866-541-4104 (Toll free within Canada &amp; USA)</p> <p><b>ACC</b> (IFR only) Moncton 506-867-7177 or 866-480-8200.</p>
<b>SERVICES</b>	
<b>S</b>	5
<b>A/D DATA</b>	Open water May-Dec
<b>COMM</b>	
<b>ATF</b>	tfc 123.05 5NM 3000 ASL



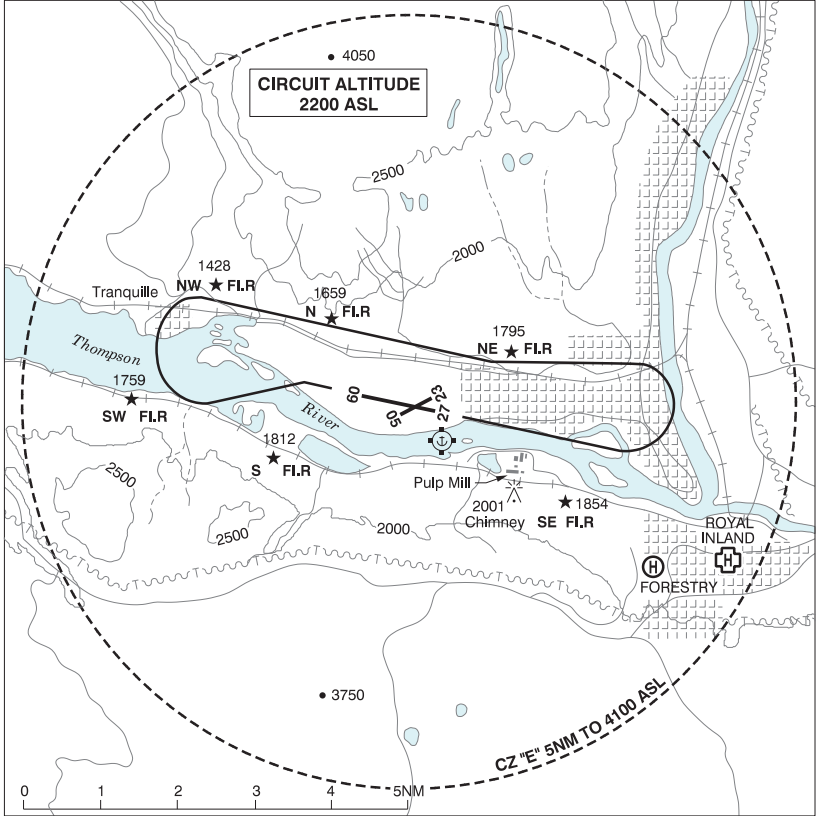
### KASBA LAKE NT

CJP5

<b>REF</b>	N60 17 W102 31 7°E (2013) UTC-6(5) Elev 1089' A5024 A5031
<b>OPR</b>	Kasba Lake Lodge 250-248-3572 Reg PPR
<b>PF</b>	B-1,2,5 PN Oprg Jun15-Sep 1
<b>FLT PLN</b>	<p><b>FIG</b> Edmonton 866-WXBRIEF (Toll free within Canada) or 866-541-4102 (Toll free within Canada &amp; USA)</p>
<b>SERVICES</b>	
<b>FUEL</b>	100LL, JA Prior amg thru Opr Jun 15 - Aug 15
<b>A/D DATA</b>	Open water Jun-Oct. Sand beach.
<b>COMM</b>	
<b>ATF</b>	UNICOM ltd hrs O/T tfc 122.8 5NM 4200 ASL



**KAMLOOPS VFR TERMINAL PROCEDURES CHART - NIGHT CIRCUIT PROCEDURE**

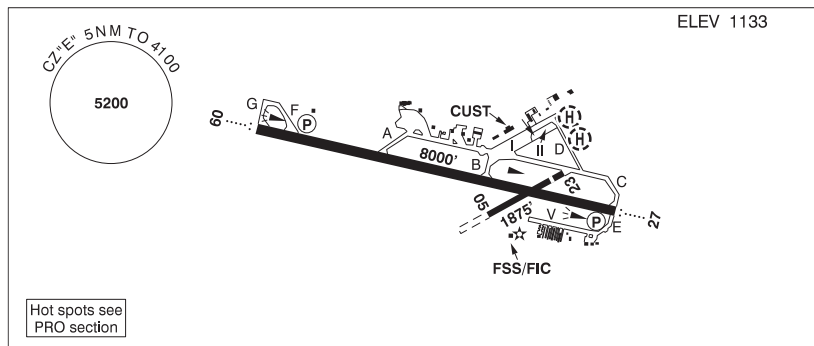


## BRITISH COLUMBIA

## AERODROME / FACILITY DIRECTORY

## KAMLOOPS BC

CYKA



<b>REF</b>	N50 42 09 W120 26 55 5WNW 16°E (2016) UTC-8(7) Elev 1133' A5004 LO2 HI3 CAP RCAP
<b>OPR</b>	Kamloops Aprt Ltd 250-376-3613 Cert
<b>PF</b>	A-1,2,3,6 C-4,5
<b>CUST</b>	AOE/30 1630-0030Z† Mon-Fri exc hols 888-226-7277
<b>FLT PLN</b>	
<b>FIC</b>	Kamloops 866-WXBRIEF (Toll free within Canada) or 866-541-4101 (Toll free within Canada & USA)
<b>WX</b>	METAR H24. TAF H24, issue times: 01, 07, 13, 19Z.
<b>SERVICES</b>	Call out chg may be levied for one or more svcs
<b>FUEL</b>	100LL, JA-1 (FSII avbl)
<b>OIL</b>	80, 100, 120
<b>S</b>	1 (ltd), 2,3,4,5,6 (ltd)
<b>ARFF</b>	DESIGNATED CAT 6 14-08Z†, O/T 2 hr PN 250-376-3233 call out chg
<b>PVT ADV</b>	Shell 123.0 250-376-7633; Executive Flight Centre 122.85 250-376-9069
<b>MIL CON</b>	Executive Flight Centre Fuel 250-376-9069
<b>RWY DATA</b>	Rwy 09(087°)/27(267°) 8000x148 ASPH Rwy 05(045°)/23(225°) 1875x49 ASPH Thld 23 displ 249'.
<b>RWY CERT</b>	Rwy 05/23 AGN I Rwy 09/27 AGN IIIB
<b>TWY CERT</b>	Twy: D, E AGN II
<b>TWY</b>	Twy A, no vehicle ctl first 600' W of Apron I. Twy E: Unlgtd
<b>APRON</b>	Apron 1: Uncontrolled, avbl to sked pax flt only. All acft must yield to acft in pushback from ATB. Prkg fees. Apron II: Uncontrolled, avbl for transient and itinerant prkg. All acft must yield to acft in pushback from ATB. Pilot/pax access via groundside Gate 10 only; no access/egress permitted via ATB. Prkg fees. Apron V: Uncontrolled, PPR for prkg on or within 25' of aprn.
<b>RCR</b>	FSS Win maint 13-08Z† O/T 2 hrs PN cost recovery. CRFI, PCN.
<b>LIGHTING</b>	09-AO(TE ME) P2, 27-AO(TE ME) P2 ARCAL-125.7 type K avbl when FSS clsd PAPI limitation/restriction. PAPI Rwy 09 to be used only within 4NM of thld; PAPI Rwy 27 to be used only within 4NM of thld. Twy D RR.

## BRITISH COLUMBIA

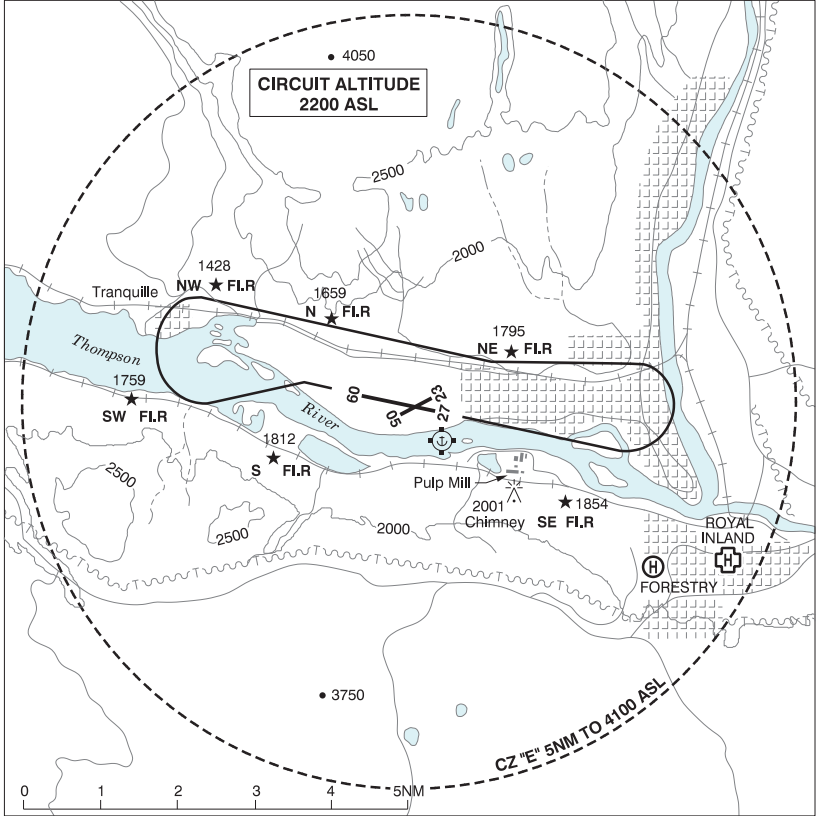
## AERODROME / FACILITY DIRECTORY

## KAMLOOPS BC (Cont'd)

CYKA

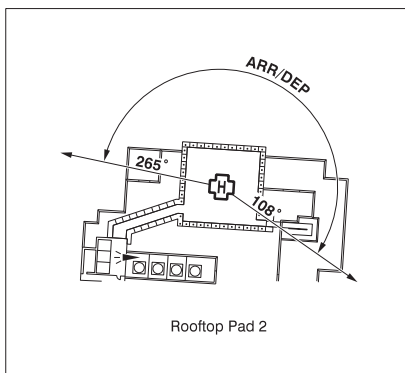
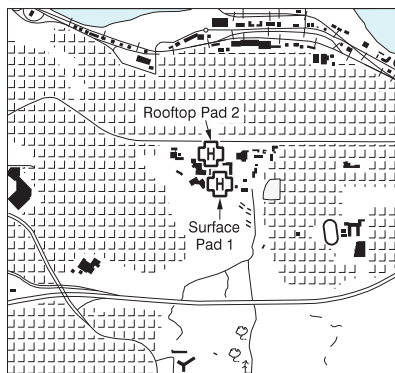
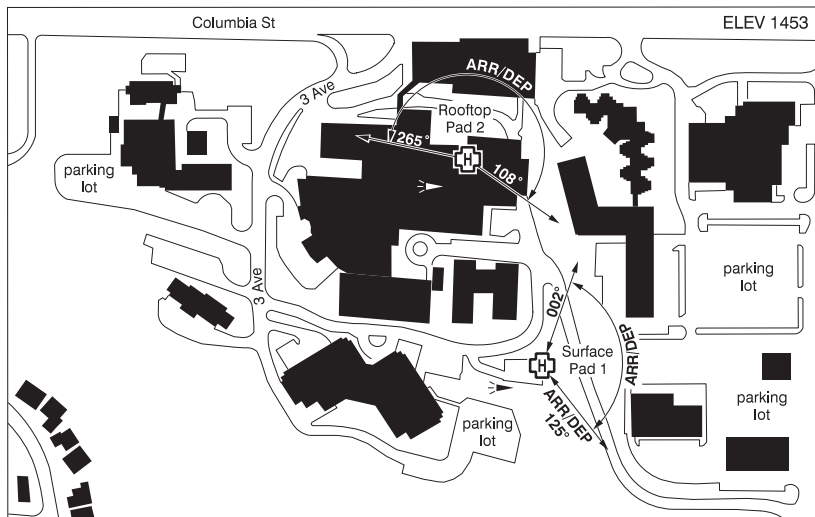
<b>COMM</b>	<b>RADIO</b> 125.7 PTC avbl (V) (emerg only 250-376-7941) <b>RCO</b> Pacific rdo 123.375 (FISE) 126.7 (bcst) <b>CLNC DEL</b> 121.9 PTC avbl ltd hrs <b>MF</b> rdo 125.7 5NM 4100 ASL (CAR 602.98) <b>PAL</b> Vancouver Ctr 132.35 133.5 134.4 236.0
<b>NAV</b>	<b>DME</b> IKA 109.3 Ch 30 N50 42 14 W120 27 41 (1136') MT LOLO YKB 117.5 Ch 122 N50 48 03 W120 07 39 (5757') <b>ILS</b> IKA 109.3 (Rwy 09) <b>LOC</b> IPP 109.9 (Rwy 27)
<b>PRO</b>	Pilots should refer to Canadian Airport Charts (CAC) to obtain details on established hot spots, prior to operating on maneuvering areas. CAC are available for free on the NAV CANADA website. Day: rgt hand circuits Rwys 05, 23 & 27 (CAR 602.96). Night: follow VTTC night circuit pro. Tkof and ldg in grass adj rwys by fixed-wing acft not auth.
<b>CAUTION</b>	Migratory bird activity in vic of A/D. Only pilots familiar with lcl terrain should use this aprt dur hrs of darkness. Ngt ops not recommended unless all 6 hazard beacons are oprg. Hi terrain reduces operational length of Rwys 09 and 27 PAPI. Painted & lgtd twr 1253 ASL (128 AGL) aprx 250' beyond Thld 05 and aprox 2710' NW rwy centreline. Fuel facility (tanks 80 AGL) aprx 0.5NM NE A/D; no low alt heli ops.

**KAMLOOPS VFR TERMINAL PROCEDURES CHART - NIGHT CIRCUIT PROCEDURE**



**KAMLOOPS (ROYAL INLAND HOSP) BC (Heli)**

**CBC4**



<b>REF</b>	N50 40 09 W120 19 59 Adj 17°E (2012) UTC-8(7) Elev 1453' A5004
<b>OPR</b>	Interior Health Authority 250-374-4160 Cert PPR
<b>PF</b>	B-1,2,4 C-3,5,6
<b>FLT PLN</b>	
<b>FIG</b>	Kamloops 866-WXBRIEF (Toll free within Canada) or 866-541-4101 (Toll free within Canada & USA)
<b>HELI DATA</b>	<p>Surface Pad 1:                      FATO 86' dia elevated TLOF 57' dia CONC Safety Area 115' dia elevated                      17,000 lbs Max heli overall length 57.4' (CAR 602.96)</p> <p>Rooftop Pad 2:                      FATO 86' x 86' non-supporting TLOF 71' x 71' CONC Safety Area 115' x 115'                      18,000 lbs Max heli overall length 57.4' (CAR 602.96)</p>
<b>RCR</b>	Opr
<b>LIGHTING</b>	Surface Pad 1: RY(LO) green ARCAL-125.7 type J Rooftop Pad 2: RW(ME) green LED ARCAL-122.9 type K

## BRITISH COLUMBIA

## AERODROME / FACILITY DIRECTORY

**KAMLOOPS (ROYAL INLAND HOSP) BC (Heli) (Cont'd)****CBC4**

<b>COMM</b>	<b>MF</b> <b>A/G</b>	Kamloops rdo 125.7 5NM 4100 ASL centered on Kamloops aprt (CAR 602.98). Hosp Security PEPCORD1 148.655 FM 3 min PN
<b>PRO</b>		Surface Pad 1 Arr/dep 125° fr heli, (H3) (CAR 602.96). Arr/dep 002° to 125° fr heli, (H1) (CAR 602.96). Rooftop Pad 2 Arr/dep 265° to 108° fr heli (H1) (CAR 602.96).
<b>CAUTION</b>		Unlgtd embankment to 40', adj SE. Marked & lgtd hosp penthouse elevator aprx 30' W of rooftop pad safety area.

**KAMLOOPS VFR TERMINAL PROCEDURES CHART - NIGHT CIRCUIT PROCEDURE**

