

---

# FLIGHT PLAN & SITE SURVEY

---

E 927-5813 Ontario FPV- 406 3Pad Field (927)

May 22, 2026



**IMPORTANT NOTICE**

Please ensure you have received all required authorizations prior to flight. This Site Survey was created using RPAS Wilco. The user accepts all responsibility for the accuracy of the information.

Terms & Conditions: [rpaswilco.com/#tnc](https://rpaswilco.com/#tnc)

# Mission Information

E 927-5813 ONTARIO FPV- 406 3PAD FIELD (927)

## FLIGHT DETAILS

Reference No:	<b>MAAC-927-5813</b>
Project Name:	<b>Ontario FPV</b>
Pilot Name:	<b>MAAC</b>
Pilot Certificate:	
Mission Type:	<b>VLOS</b>
Flight Start:	<b>May 22, 2026 11:08 PM</b>
Flight End:	<b>May 23, 2026 12:08 AM</b>

## LOCATION DETAILS

Flight Address:	<b>406 3Pad Field (927)</b>
Latitude:	<b>43° 5' 14.95" N ( 43.087 )</b>
Longitude:	<b>79° 14' 6.22" W ( -79.235 )</b>
Field Elevation:	<b>587 ft MSL</b>
Altitude / Radius:	<b>400 ft / 926 m ( 0.5 nm )</b>
Classification:	<b>UNCONTROLLED</b>
FIR / Contact:	<b>CZYZ / 905-676-4509</b>

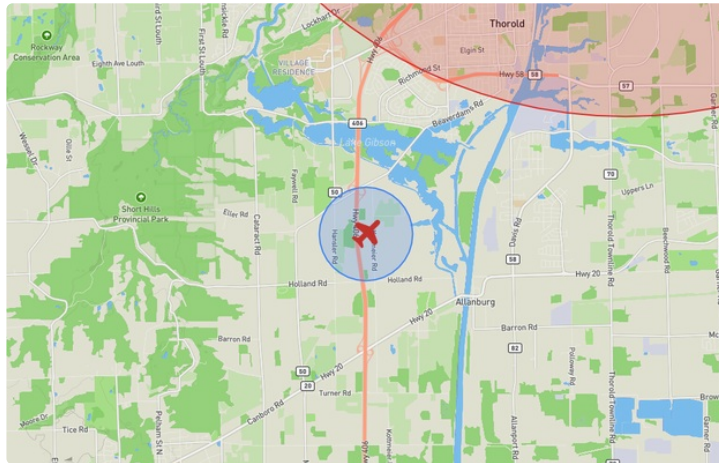
## REPORT CONTENTS

Site Survey • Obstacles (if available) • Nearby Aerodromes • Canadian Aviation Regulations • GFA • Aerodrome Supplements • METAR & TAF • NOTAMs • CFS





# Flight Map & MODEL Details

MISSION LOCATION SURVEY

## FLIGHT AREA MAP



## MISSION LOCATION DETAILS

ROLE	LATITUDE	LONGITUDE
 MODEL	43° 5' 14.95" N 43.087	79° 14' 6.22" W -79.235
 Pilot		
 Payload Op.		
 Observer		

# Airspace Classification

MISSION LOCATION SURVEY

## AIRSPACE MAP



## OVERLYING AIRSPACES

Class	Name	Floor	Ceiling
E	3.4.1-43 [TA]	700AGL	1800MSL
E	Southern Ontario Low Level Control Area c) [CAE]	6500MSL	1800MSL
E	Toronto, ON [TSP]	6500MSL	12500MSL
E	T608 Fixed RNAV Route	2200AGL	1800MSL
E	Niagara, ON [TA]	700AGL	1800MSL
E	Port Colborne, ON [TA]	700AGL	1800MSL
F	CYR518 NIAGARA FALLS, ON	SFC	3500MSL
E	Niagara District, ON [CZ]	SFC	3000GND

## NEAREST AERODROMES & DISTANCE FROM OPERATION

ST.CATHARINES(NIAGARA HEALTH SYSTEM) (CNH4 - HELIPORT - Cert)	Lat: 43.152	Long: -79.281	8.035KM	4.339NM	NW
NIAGARA DISTRICT (CYSN - AERODROME - Cert)	Lat: 43.192	Long: -79.171	12.693KM	6.854NM	NE
NIAGARA CENTRAL DOROTHY RUNGELING (CNQ3 - AERODROME - Reg)	Lat: 42.98	Long: -79.324	13.987KM	7.552NM	SW

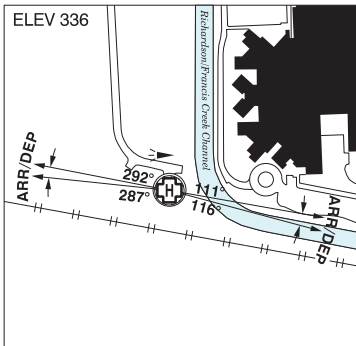
ONTARIO

AERODROME / FACILITY DIRECTORY

**ST. CATHARINES (NIAGARA HEALTH SYSTEM) ON (Heli)**

**CNH4**

<b>REF</b>	N43 09 06 W79 16 50 Adj 10°W (2013) UTC-5(4) Elev 336' VTA A5000
<b>OPR</b>	Niagara Health System 905-378-4647 Ext 32284 Cert PPR
<b>FLT PLN</b>	
<b>FIC</b>	London 866-WXBRIEF (Toll free within Canada) or 866-541-4104 (Toll free within Canada and USA)
<b>HELI DATA</b>	FATO 82' dia ASPH TLOF 33' dia ASPH Safety Area 110' dia Max heli overall length 54.6' Opr
<b>RCR</b>	
<b>LIGHTING</b>	RW(LO) green RF(FL)
<b>COMM</b>	
<b>ATF</b>	tfc 123.25 ltd hrs 5NM 3400 ASL
<b>PRO</b>	Arr/dep 111° to 116° and 287° to 292° fr heli. Slope 16% (H2), day/night use VFR only.
<b>CAUTION</b>	CN railway line runs S of heli.



## ONTARIO

## AERODROME / FACILITY DIRECTORY

## ST. CATHARINES / NIAGARA DISTRICT ON

CYSN

<b>REF</b>	N43 11 30 W79 10 16 11°W UTC-5(4) Elev 322' VTA A5000 LO6 HI5 CAP	
<b>OPR</b>	Niagara District Aprt Comsn 905-684-7447 11-24Z† Mon-Fri, 1230-2000Z† Sat-Sun, exc hols. O/T 2hrs PN, call out chg may be levied ctc opr Cert Ldg fees	
<b>PF</b>	A-1,7 C-2,3,4,5,6	
<b>CUST</b>	AOE/15 888-226-7277 13-05Z†	
<b>FLT PLN</b>	When FSS clsd pilots to open/close VFR flt plan and obtain IFR clnc fr London rdo FISE or by phone. To file an IFR arr rpt ctc Toronto Centre 888-217-1241 if unable via rdo.	
<b>FIC</b>	London 866-WXBRIEF (Toll free within Canada) or 866-541-4104 (Toll free within Canada & USA)	
<b>WX</b>	METAR 12-02Z† O/T LWIS TAF 14-02Z†, issue times: 14, 20Z.	
<b>SERVICES</b>	Svcs avbl 13-23Z† O/T call out chg applies 905-684-3600	
<b>FUEL</b>	100LL, JA-1	
<b>OIL</b>	Aeroshell W100, 15W50	
<b>S</b>	1,2,3,4,5,6	
<b>RWY DATA</b>	Rwy 06(064°)/24(244°) 5000x100 ASPH Rwy 01(009°)/19(189°) 2498x75 ASPH Rwy 11(107°)/29(287°) 1988x75 ASPH	
<b>RWY CERT</b>	Rwy 06/24 AGN IIIA Rwy 01/19 AGN I Rwy 11/29 AGN I	
<b>TWY CERT</b>	Twy D AGN I	
<b>RCR</b>	Opr CRFI Win maint 11-24Z† Mon-Fri, 1230-2000Z† Sat-Sun, Oct 16-Apr 16, exc hols. O/T 2hrs PN, call out chg may be levied ctc opr.	
<b>LIGHTING</b>	06-AO(TE ME) P2, 24-AO(TE ME) P2 Opr 1215-02Z† O/T ARCAL-123.25 type K	
<b>COMM</b>		
<b>RADIO</b>	123.25 PTC avbl (V) 1215-02Z† (emerg only 905-688-8367)	
<b>RCO</b>	London rdo 123.475 (FISE) 126.7 (bcst)	
<b>ATIS</b>	128.525 1215-02Z†	
<b>MF</b>	rdo 123.25 1215-02Z† 5NM 3300 ASL (CAR 602.98)	
<b>ATF</b>	ffc 123.25 02-1215Z† 5NM 3300 ASL	
<b>ARR</b>	Toronto Tml 133.4	
<b>DEP</b>	Toronto Tml 133.4	
<b>PAL</b>	133.3	
<b>PRO</b>	For flt over Niagara Falls, see Niagara Falls VTPC. Heli ops proh on E apron. NOISE MITIGATION: After tkof from Rwy 24, track on or N of the extended rwy centreline, no turns below 1000 ASL.	
<b>CAUTION</b>	Hold position on Twy A is for both Rwy 01 and 06. Pilots intending to depart Rwy 06 must verify correct orientation on Rwy 06 prior to departure. Hold position on Twy B is for Rwy 06/24 and Rwy 29.	

## ONTARIO

## AERODROME / FACILITY DIRECTORY

## WELLAND / NIAGARA CENTRAL DOROTHY RUNGELING ON

CNQ3

<b>REF</b>	N42 58 48 W79 19 29 3.5W 10°W (2014) UTC-5(4) Elev 585' A5000 LO6 CAP	
<b>OPR</b>	Niagara Central Airport Commission 905-714-1000 Reg	
<b>PF</b>	A-2,7,8 C-3,4,5,6	
<b>CUST</b>	AOE/CAN	
<b>FLT PLN</b>	<b>FIC</b> London 866-WXBRIEF (Toll free within Canada) or 866-541-4104 (Toll free within Canada & USA)	
<b>SERVICES</b>	<b>FUEL</b> 100LL Self-serve H24 Visa, MasterCard & debit cards <b>OIL</b> 20W50 <b>S</b> 1,2,3: Tarczy Aircraft 289-213-1528 4,5	
<b>RWY DATA</b>	Rwy 05(048°)/23(228°) 3493x100 ASPH AGN II Rwy 16(156°)/34(336°) 2663x50 ASPH Rwy 11(110°)/29(290°) 2341x60 GRASS	
<b>RCR</b>	Opr Rwy 16/34 ltd win maint Rwy 11/29 no win maint.	
<b>LIGHTING</b>	05-(TE ME) AP, 23-(TE ME) AP ARCAL-123.5 type K	
<b>COMM</b>	<b>ATF</b> UNICOM ltd hrs O/T tfc 123.5 5NM 3600 ASL	
<b>PRO</b>	For flt over Niagara falls, see NIAGARA FALLS VTPC	
<b>CAUTION</b>	Glider activity in vic of A/D Sat, Sun, hols Apr-Jun and Sep-Nov. Gliders may use non-std pattern. Bird act in vic of Welland River. Ocs! wildlife on rwy.	