
FLIGHT PLAN & SITE SURVEY

A 930-5832 Fort McMurray RC Modellers- McMurray RC
Modellers

May 22, 2026



IMPORTANT NOTICE

Please ensure you have received all required authorizations prior to flight. This Site Survey was created using RPAS Wilco. The user accepts all responsibility for the accuracy of the information.

Terms & Conditions: rpaswilco.com/#tnc

Mission Information

A 930-5832 FORT MCMURRAY RC MODELLERS- MCMURRAY RC MODELLERS

FLIGHT DETAILS

Reference No:	MAAC-930-5832
Project Name:	Fort McMurray RC Modellers
Pilot Name:	MAAC
Pilot Certificate:	
Mission Type:	VLOS
Flight Start:	May 22, 2026 09:09 PM
Flight End:	May 22, 2026 10:09 PM

LOCATION DETAILS

Flight Address:	Mcmurray RC Modellers
Latitude:	56° 36' 27.55" N (56.608)
Longitude:	111° 20' 4.46" W (-111.335)
Field Elevation:	1237 ft MSL
Altitude / Radius:	400 ft / 926 m (0.5 nm)
Classification:	UNCONTROLLED
FIR / Contact:	CZEG / 780-890-8397

REPORT CONTENTS

Site Survey • Obstacles (if available) • Nearby Aerodromes • Canadian Aviation Regulations • GFA • Aerodrome Supplements • METAR & TAF • NOTAMs • CFS





Flight Map & MODEL Details

MISSION LOCATION SURVEY

FLIGHT AREA MAP



MISSION LOCATION DETAILS

ROLE	LATITUDE	LONGITUDE
 MODEL	56° 36' 27.55" N 56.608	111° 20' 4.46" W -111.335
 Pilot		
 Payload Op.		
 Observer		

Airspace Classification

MISSION LOCATION SURVEY

AIRSPACE MAP



OVERLYING AIRSPACES

Class	Name	Floor	Ceiling
B	Edmonton, AB a) [CAE]	12500MSL	18000MSL
E	Edmonton, AB a) [CAE]	3500MSL	12500MSL
E	T812 Fixed RNAV Route	2200AGL	18000MSL
E	Fort McMurray, AB [TA]	700AGL	18000MSL
C	Fort McMurray, AB [CZ]	SFC	3000GND
E	V325-2 VHF/UHF Airway	2200AGL	18000MSL
E	V21-2 VHF/UHF Airway	2200AGL	18000MSL

NEAREST AERODROMES & DISTANCE FROM OPERATION

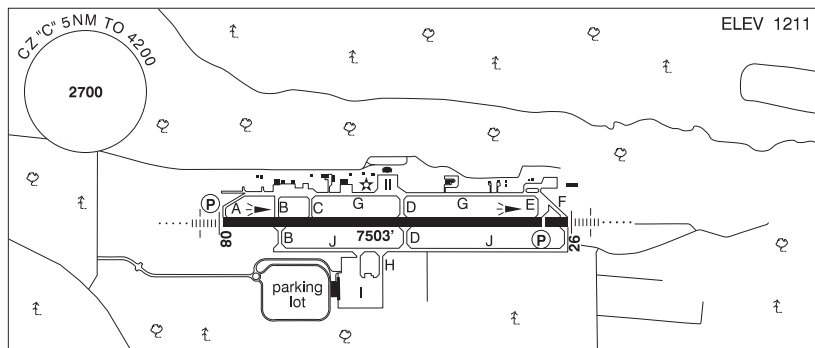
FORT MCMURRAY (CYMM - AERODROME - Cert)	Lat: 56.653	Long: -111.223	8.486KM	4.582NM	NE
FORT MCMURRAY (CES7 - WATERDROME - Reg)	Lat: 56.733	Long: -111.377	14.158KM	7.645NM	N
NORTHERN LIGHTS REGIONAL HEALTH CENTRE (CNO9 - HELIPORT - Cert)	Lat: 56.717	Long: -111.36	12.25KM	6.614NM	N

ALBERTA

AERODROME / FACILITY DIRECTORY

FORT McMURRAY AB

CYMM



REF	N56 39 12 W111 13 24 7SE 15°E (2012) UTC-7(6) Elev 1211' A5023 LO1 HI2 HI3 CAP
OPR	Fort McMurray Aprt Authority 780-793-8970 Cert Ldg fees
PF	A-1,2,3,6,7 C-4,5
FLT PLN	
FIG	Edmonton 866-WXBRIEF (Toll free within Canada) or 866-541-4102 (Toll free within Canada & USA)
ACC	Edmonton IFR 888-358-7526
WX	METAR AUTO H24 (see COMM) WxCam TAF H24, issue times: 01, 07, 13, 19Z.
SERVICES	Call out chg for after hrs svcs. Ramp fees 24 hrs.
FUEL	100LL, JA-1 (FSII avbl)
OIL	All
S	1,2,3,4,5,6,7
ARFF	DESIGNATED CAT 6 1245-0815Z±, O/T call out chg PN, outside CAT 6 hrs PPR for acft 20 seats & abv, exc for diversions or as an altn A/D
	D & A-ice
SUP FL	Executive Flight Centre 123.0 780-791-5551
PVT ADV	Executive Flight Centre Fuel Services Ltd 780-791-5551
MIL CON	
RWY DATA	Rwy 08(075°)/26(255°) 7503x150 ASPH Thld 26 displ 500'
RWY CERT	Rwy 08 RVR 1200(1/4sm)/Rwy 26 RVR 1200(1/4sm) AGN IV
TWY CERT	Twy: C, G AGN IIIB
TWY	Twy C and G rstd to acft wingspan 118' or less. Twy H uncontrolled
APRON	ATB Apron I: Ltd prkg. 2hr PN for non-sked acft 780-793-8970. All acft shall enter via the W entrance and exit via Twy H. All acft will be marshalled in and push-back is mandatory. ATB apron II: Ltd prkg. 24 hr PN for non-sked acft 780-793-8970. All acft will be marshalled in and push-back is mandatory.
RCR	Opr Win maint 13-06Z± O/T 2hr PN cost recovery. CRFI, PCN
LIGHTING	08-AN(TE HI) P2, 26-AN(TE HI) P2 ARCAL-118.1 type K 0545-1315Z±

ALBERTA

AERODROME / FACILITY DIRECTORY

FORT McMURRAY AB (Cont'd)

CYMM

COMM	<p>RCO Yellowknife rdo 118.1 (RAAS) 0545-1315Z† (emerg only 867-873-4049) Edmonton rdo 123.55 (FISE) 126.7 (bcst)</p> <p>ATIS 128.5 1315-0545Z†</p> <p>GND McMurray 121.9 1315-0545Z†</p> <p>TWR McMurray 118.1 236.6 (E) 1315-0545Z† (emerg only 780-743-0988)</p> <p>MF Yellowknife rdo 118.1 0545-1315Z† 5NM 4200 ASL (CAR 602.98)</p> <p>PAL Edmonton Ctr 135.7</p> <p>AWOS 128.5 0545-1315Z†</p>
NAV	<p>VOR/DME YMM 112.0 Ch 57 N56 38 52 W111 07 21 (1205')</p> <p>DME YFF 115.6 Ch 103 N56 39 12 W111 20 08 (1306')</p> <p>ILS IMM 109.9 (Rwy 26) RVR</p>
PRO	<p>Rgt hand circuits Rwy 08 (CAR 602.96). Transponder MODE C required within the 25 NM Fort McMurray Class E control area extension, the 15 NM Class E transition area & 5 NM control zone. Fit Pln open and close with Edmonton FIC on 123.55 (FISE). Pilots to close VFR flt plans with Edmonton FIC (phone or FISE freq) when practicable or request closure fr ATC. North Oil Sands ATF Area 123.5 north of local CZ, see Fort Mackay VTPC and Section C – Areas With Discrete Air-To-Air Frequencies.</p> <p>HELI PRO: Ctc gnd for repositioning and dep instructions.</p>
CAUTION	Do not confuse Twy J with Rwy 08/26.

CANADA WATER AERODROME SUPPLEMENT

Effective 0901Z 19 March 2026 to 0901Z 18 February 2027

AERODROME/FACILITY DIRECTORY B61

FORT McMURRAY AB

CE57

REF	N56 43 58 W111 22 39 Adj NE 15°E (2013) UTC-7(6) Elev 795' A5023	
OPR	McMurray Aviation 780-791-2182 Reg	
PF	C-1,2,3,4,5,6	
FLT PLN	FIC Edmonton 866-WXBRIEF (Toll free within Canada) or 866-541-4102 (Toll free within Canada & USA)	
SERVICES	Call out chg may be levied FUEL 100LL (D) Universal Avn Svcs 780-791-9881 OIL All S 2	
A/D DATA	Snye Bay near Clearwater River/Athabasca River junction. Open water mid May-mid Oct. Depth 6', current 3 kt. Mud & gravel bottom. Beaches. Area may be used for ski ops dur win months.	
COMM	RCO Yellowknife rdo 118.1 (RAAS) 0545-1315Z± (emerg only 867-873-4049) Edmonton rdo 123.55 (FISE) 126.7 (bcst) 128.5 1315-0545Z± at land A/D ATIS TWR McMurray 118.1 236.6 (E) 1315-0545Z± (emerg only 780-743-0988) at land A/D	
NAV	VOR/DME YMM 112.0 Ch 57 N56 38 52 W111 07 21 (1205')	
PRO	Transponder MODE C required within the 25NM Fort McMurray Class E control area extension, the 15NM Class E transition area and 5NM Class C control zone. Flt pln open and close with Edmonton FIC on 123.55 (FISE). Air tfc advsy freq 123.5 North Oil Sands Area. See Fort MacKay VTPC and Section C – Areas With Discrete Air-To-Air Frequencies.	
CAUTION	Floating logs at hi water in June. Clearwater River hazardous dur low water season. Athabasca River to be avoided if possible due to rocks. Sand banks & traffic lights on dike road at W end of Snye Bay near Athabasca River. Sand banks always shifting fr year to year.	

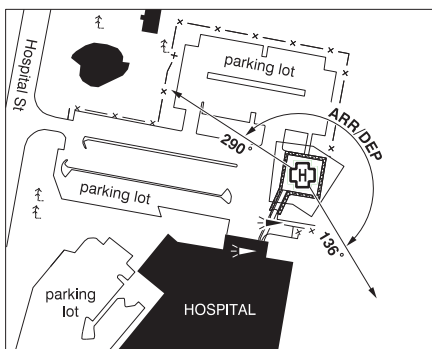
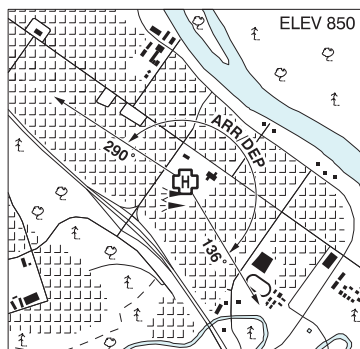
FORT NELSON (PARKER LAKE) BC

CER9

REF	N58 50 W122 54 6WNW 20°E (2013) UTC-8 Elev 1255' A5022 A5099
OPR	Liard Air Ltd 250-776-3481 Reg PPR
PF	D-1,2,3,4,5,6
FLT PLN	FIC Edmonton 866-WXBRIEF (Toll free within Canada) or 866-541-4102 (Toll free within Canada & USA)
SERVICES	S 5
A/D DATA	Open water May-Oct. Site unattended. Depth 4', soft mud bottom.

FORT McMURRAY / NORTHERN LIGHTS REGIONAL HEALTH CENTRE AB (Helicopter)

CNO9



REF	N56 43 01 W111 21 35 Adj 13°E (2023) UTC-7(6) Elev 850' A5023
OPR	Alberta Health Services 780-791-6161 Cert NVIS OPS AUTH PPR
FLT PLN	
FIC	Edmonton 866-WXBRIEF (Toll free within Canada) or 866-541-4102 (Toll free within Canada & USA)
HELI DATA	FATO 82' x 82' non-supporting TLOF 55' x 55' CONC Safety Area 109' x 109' Elevated 17,000 lbs Max heli overall length 54.66' (CAR 602.96)
RCR	Opr
LIGHTING	RY (LO) non-std (see CAUTION) ARCAL-123.2 type J
COMM	
RCO	Yellowknife rdo 118.1 (RAAS) 0545-1315Z† (emerg only 867-873-4049) at Fort McMurray A/D 5.9 NM ESE. Edmonton rdo 123.55 (FISE) 126.7 (bcst) 128.5 1315-0545Z† at Fort McMurray A/D 5.9 NM ESE
ATIS	McMurray 118.1 236.6 (E) 1315-0545Z† (emerg only 780-743-0988) at Fort McMurray A/D 5.9 NM ESE
TWR	
PRO	Arr/dep 290° to 136° fr heli (H1) (CAR 602.96). Transponder MODE C required within the 25NM Fort McMurray Class E control area extension, the 15NM Class E transition area and 5NM Class C control zone. Fit pln open and close with Edmonton FIC on 123.55 (FISE). Air tfc advsy freq 123.5 North Oil Sands Area, see Fort MacKay VTPC and Section C – Areas With Discrete Air-To-Air Frequencies.
CAUTION	TLOF edge lights mounted 9' outside of edge marking, non-uniform spacing.