
FLIGHT PLAN & SITE SURVEY

B 418-5882 SOUTH WEST FLYERS- Yarmouth Main Street

May 23, 2026



IMPORTANT NOTICE

Please ensure you have received all required authorizations prior to flight. This Site Survey was created using RPAS Wilco. The user accepts all responsibility for the accuracy of the information.

Terms & Conditions: rpswilco.com/#tnc

Mission Information

B 418-5882 SOUTH WEST FLYERS- YARMOUTH MAIN STREET

FLIGHT DETAILS

Reference No:	MAAC-418-5882
Project Name:	SOUTH WEST FLYERS
Pilot Name:	MAAC
Pilot Certificate:	
Mission Type:	VLOS
Flight Start:	May 23, 2026 12:09 AM
Flight End:	May 23, 2026 01:09 AM

LOCATION DETAILS

Flight Address:	Yarmouth Main Street
Latitude:	43° 50' 19.50" N (43.839)
Longitude:	66° 7' 10.96" W (-66.12)
Field Elevation:	72 ft MSL
Altitude / Radius:	400 ft / 926 m (0.5 nm)
Classification:	UNCONTROLLED
FIR / Contact:	CZQM / 506-867-7173

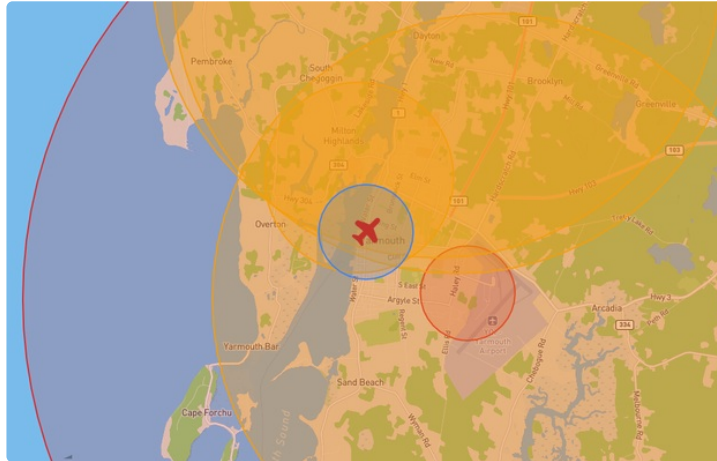
REPORT CONTENTS

Site Survey • Obstacles (if available) • Nearby Aerodromes • Canadian Aviation Regulations • GFA • Aerodrome Supplements • METAR & TAF • NOTAMs • CFS


Flight Map & MODEL Details

MISSION LOCATION SURVEY

FLIGHT AREA MAP



MISSION LOCATION DETAILS

ROLE	LATITUDE	LONGITUDE
 MODEL	43° 50' 19.50" N 43.839	66° 7' 10.96" W -66.12
 Pilot		
 Payload Op.		
 Observer		

Airspace Classification

MISSION LOCATION SURVEY

AIRSPACE MAP



OVERLYING AIRSPACES

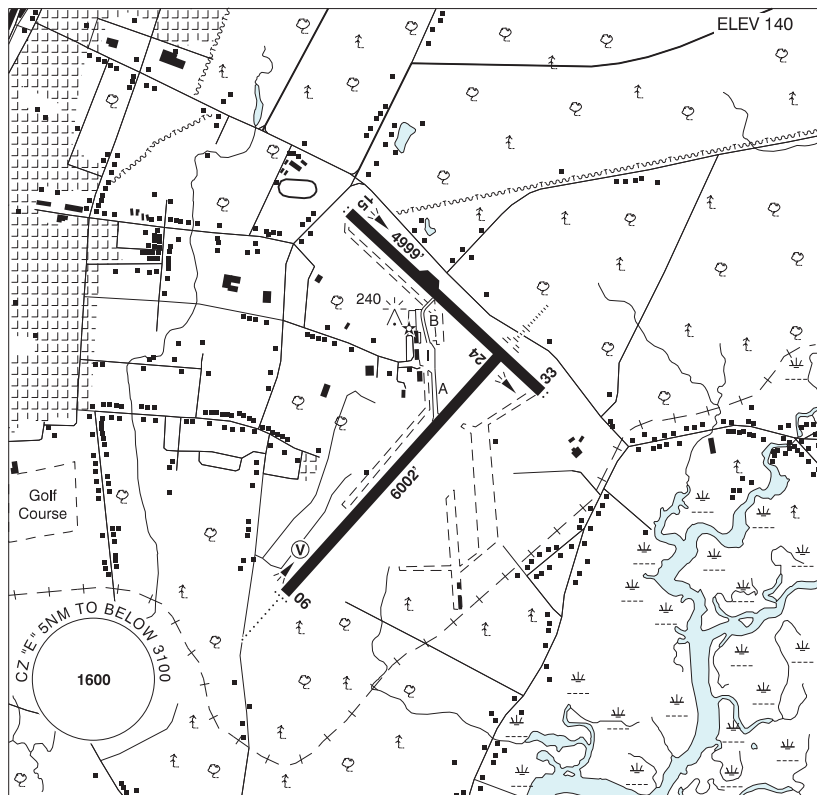
Class	Name	Floor	Ceiling
E	Yarmouth, NS [CZ]	SFC	3000GND
E	Yarmouth, NS [TA]	700AGL	18000MSL
F	CYR 6.4.0-11 SOUTHWEST NOVA SCOTIA CORRECTIONAL FACILITY, NS	SFC	1200MSL
B	Yarmouth, NS [CAE]	12500MSL	18000MSL

NEAREST AERODROMES & DISTANCE FROM OPERATION

YARMOUTH (CYQI - AERODROME - Reg)	Lat: 43.827	Long: -66.088	2.858KM	1.543NM	SE
DOCTOR'S LAKE WEST (CDL6 - WATERDROME - Reg)	Lat: 43.884	Long: -66.102	5.265KM	2.843NM	N
DOCTOR'S LAKE EAST (CDL5 - WATERDROME - Reg)	Lat: 43.882	Long: -66.097	5.094KM	2.751NM	N

YARMOUTH NS

CYQI



REF	N43 49 38 W66 05 18 Adj E 17°W (2013) UTC-4(3) Elev 140' A5003 LO8 HI6 CAP
OPR	Yarmouth Airport Commission 902-742-6466 11-20Z† O/T PN 30 mins exc SAR & MEDEVAC Reg
PF	A-1 C-2,3,4,5,6
CUST	AOE/110 (225 with staged off-loading) 888-226-7277 12-21Z† May 1-Oct 31; 12-21Z† Mon-Fri including hols Nov 1-Apr 30
FLT PLN	
FIG	London 866-WXBRIEF (Toll free within Canada) or 866-541-4104 (Toll free within Canada & USA)
ACC	(IFR only) Moncton 506-867-7177 or 866-480-8200.
WX	METAR H24 ALTIMETER/WIND 902-742-6466 H24 (see COMM) TAF H24 issue times: 00, 06, 12, 18Z
SERVICES	Call out chg may be levied for one or more svcs.
FUEL	100LL, JA-1 (FSII avbl), HPR ltd hrs, ctc apt opr
OIL	65, 100
S	1,2
SUR FL	D-ice
MIL CON	Yarmouth Intl Airport Corp 902-746-4532

NOVA SCOTIA

AERODROME / FACILITY DIRECTORY

YARMOUTH NS (Cont'd)

CYQI

RWY DATA	Rwy 06(059°)/24(239°) 6002x150 ASPH Rwy 06 down 0.42% AGN IIIA Rwy 15(150°)/33(330°) 4999x150 ASPH Rwy 15 down 0.35% AGN IIIA
TWY	B: Acft over 50,000 lbs not auth.
RCR	Opr CRFI & win maint avbl ltd hrs, PCN
LIGHTING	06-AD(non-std 2000') (TE HI) V2, 24-AE(TE HI), 15-AS(TE ME), 33-AS(TE ME)
COMM	
RCO	London Rdo 123.55 (FISE)
MF	UNICOM (AU) 123.0 5NM 3100 ASL (CAR 602.98)
PAL	Moncton Ctr 123.9 368.5
CAUTION	Daily radiosonde balloon launches with an ascent rate of 1000 ft/min btwn hrs of 1115-1345Z and 2315-0145Z. Deer in vic of aprt.

CANADA WATER AERODROME SUPPLEMENT

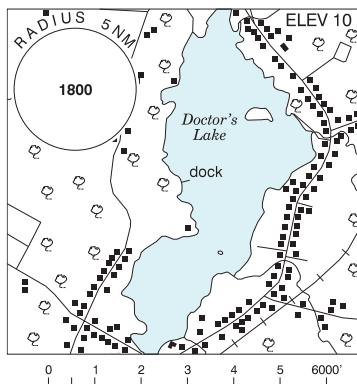
Effective 0901Z 19 March 2026 to 0901Z 18 February 2027

B44 AERODROME/FACILITY DIRECTORY

DOCTOR'S LAKE WEST NS

CDL6

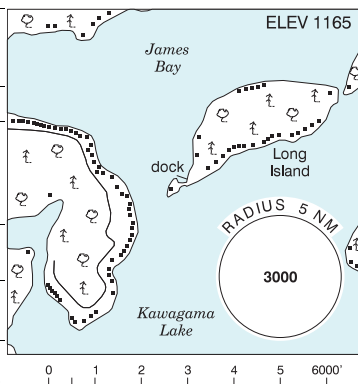
REF	N43 53 04 W66 06 09 1.0NW 17°W (2014) UTC-4(3) Elev 10' A5003
OPR	David Arenburg 902-742-7437 902-749-8547 Reg PN
PF	B-1, C-2,3,4,5,6
FLT PLN	FIG London 866-WXBRIEF (Toll free within Canada) or 866-541-4104 (Toll free within Canada & USA) ACC (IFR only) Moncton 506-867-7177 or 866-480-8200.
A/D DATA	Open water Apr-Dec min water depth 3' at dock
COMM	RCO London rdo 123.55 (FISE) MF UNICOM (AU) 123.0 5NM centred on Yarmouth land A/D 3.6NM SSE 3100 ASL (CAR 602.98) PAL Moncton Ctr (Yarmouth) 123.9 368.5
CAUTION	Lgt'd twrs in vicinity E & N up to 734 ASL (564 AGL)



DORSET / AVERELL'S COVE ON

CAC5

REF	N45 18 29 W78 45 14 7ENE 11°W (2023) UTC-5(4) Elev 1165' A5000
OPR	Hans Veit 647-223-2640 Reg PPR
FLT PLN	FIG London 866-WXBRIEF (Toll free within Canada) or 866-541-4104 (Toll free within Canada & USA)
A/D DATA	Open water Apr-Dec. Depth 3' at dock. Island, no road access.
COMM	ATF tfc 123.2 3NM 4200 ASL
CAUTION	Hi terrain N of AD. Stump in water, marked 30' fr end of dock. Strong winds may cause downdrafts off hills.



CANADA WATER AERODROME SUPPLEMENT

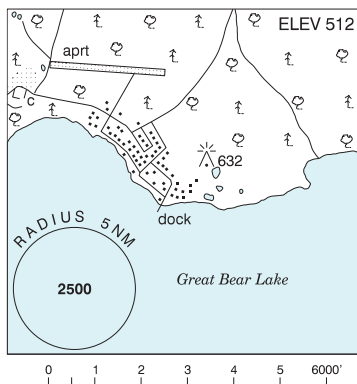
Effective 0901Z 19 March 2026 to 0901Z 18 February 2027

AERODROME/FACILITY DIRECTORY B43

DÉLINE NT

CEN7

REF	N65 11 W123 25 Adj 23°E (2013) UTC-7(6) Elev 512' A5035
OPR	Charter Community of Déline 867-589-4800 Ltd hrs Reg
PF	C-1,2,4 at adj land A/D
FLT PLN	
FIC	Edmonton 866-WXBRIEF (Toll free within Canada) or 866-541-4102 (Toll free within Canada & USA)
CARS	867-589-3033 Ltd hrs (see COMM)
SERVICES	
S	5
A/D DATA	Keith Arm of Great Bear Lake & lake 0.4NM W of settlement. Open water mid May-mid Oct. Fair anchorage, shoreline rocky.
COMM	
MF	aprt rdo ltd hrs O/T tfc 122.1 5NM centred on Déline land A/D 1.7NM NNW 3700 ASL (CAR 602.98)
APRT RDO	122.1 (V) 14-00Z± Mon-Sat, 18-23Z± Sun exc federal observed hols, at land A/D 1.7NM NNW
CAUTION	No sheltered fr E winds. Swells hi if E winds exceed 15 m.p.h.

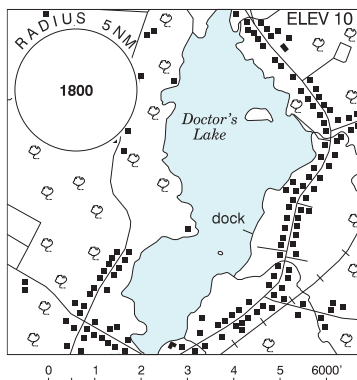


DIGBY ISLAND BC — See PRINCE RUPERT / DIGBY ISLAND

DOCTOR'S LAKE EAST NS

CDL5

REF	N43 52 54 W66 05 51 0.7NW 17°W (2014) UTC-4(3) Elev 10' A5003
OPR	Richard Hurlburt 902-749-7540 Reg
PF	B-1 C-2,3,4,5,6
FLT PLN	
FIC	London 866-WXBRIEF (Toll free within Canada) or 866-541-4104 (Toll free within Canada & USA)
ACC	(IFR only) Moncton 506-867-7177 or 866-480-8200.
A/D DATA	Open water Apr-Dec min water depth 3' at dock
COMM	
RCO	London rdo 123.55 (FISE)
MF	UNICOM (AU) 123.0 5NM centered on Yarmouth land A/D 3.2NM SSE 3100 ASL (CAR 602.98)
PAL	Moncton Ctr (Yarmouth) 123.9 368.5
CAUTION	Lgtd twrs in vicinity E & N up to 734 ASL (564 AGL)



CANADA WATER AERODROME SUPPLEMENT

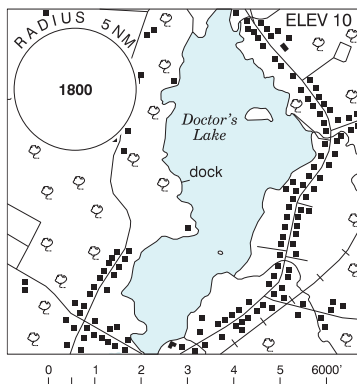
Effective 0901Z 19 March 2026 to 0901Z 18 February 2027

B44 AERODROME/FACILITY DIRECTORY

DOCTOR'S LAKE WEST NS

CDL6

REF	N43 53 04 W66 06 09 1.0NW 17°W (2014) UTC-4(3) Elev 10' A5003
OPR	David Arenburg 902-742-7437 902-749-8547 Reg PN
PF	B-1, C-2,3,4,5,6
FLT PLN	FIG London 866-WXBRIEF (Toll free within Canada) or 866-541-4104 (Toll free within Canada & USA) ACC (IFR only) Moncton 506-867-7177 or 866-480-8200.
A/D DATA	Open water Apr-Dec min water depth 3' at dock
COMM	RCO London rdo 123.55 (FISE) MF UNICOM (AU) 123.0 5NM centred on Yarmouth land A/D 3.6NM SSE 3100 ASL (CAR 602.98) PAL Moncton Ctr (Yarmouth) 123.9 368.5
CAUTION	Lgtd twrs in vicinity E & N up to 734 ASL (564 AGL)



DORSET / AVERELL'S COVE ON

CAC5

REF	N45 18 29 W78 45 14 7ENE 11°W (2023) UTC-5(4) Elev 1165' A5000
OPR	Hans Veit 647-223-2640 Reg PPR
FLT PLN	FIG London 866-WXBRIEF (Toll free within Canada) or 866-541-4104 (Toll free within Canada & USA)
A/D DATA	Open water Apr-Dec. Depth 3' at dock. Island, no road access.
COMM	ATF tfc 123.2 3NM 4200 ASL
CAUTION	Hi terrain N of AD. Stump in water, marked 30' fr end of dock. Strong winds may cause downdrafts off hills.

