
FLIGHT PLAN & SITE SURVEY

E 9005-5883 Zone E Middle Ontario- Meeting Room St.
Matthews Anglican Church

May 22, 2026



IMPORTANT NOTICE

Please ensure you have received all required authorizations prior to flight. This Site Survey was created using RPAS Wilco. The user accepts all responsibility for the accuracy of the information.

Terms & Conditions: rpswilco.com/#tnc

Mission Information

E 9005-5883 ZONE E MIDDLE ONTARIO- MEETING ROOM ST. MATTHEWS ANGLICAN CHURCH

FLIGHT DETAILS

Reference No:	MAAC-9005-5883
Project Name:	Zone E Middle Ontario
Pilot Name:	MAAC
Pilot Certificate:	
Mission Type:	VLOS
Flight Start:	May 22, 2026 11:09 PM
Flight End:	May 23, 2026 12:09 AM

LOCATION DETAILS

Flight Address:	Meeting Room St. Matthews Anglican Church
Latitude:	43° 18' 35.54" N (43.31)
Longitude:	79° 50' 57.20" W (-79.849)
Field Elevation:	335 ft MSL
Altitude / Radius:	400 ft / 926 m (0.5 nm)
Classification:	UNCONTROLLED
FIR / Contact:	CZYZ / 905-676-4509

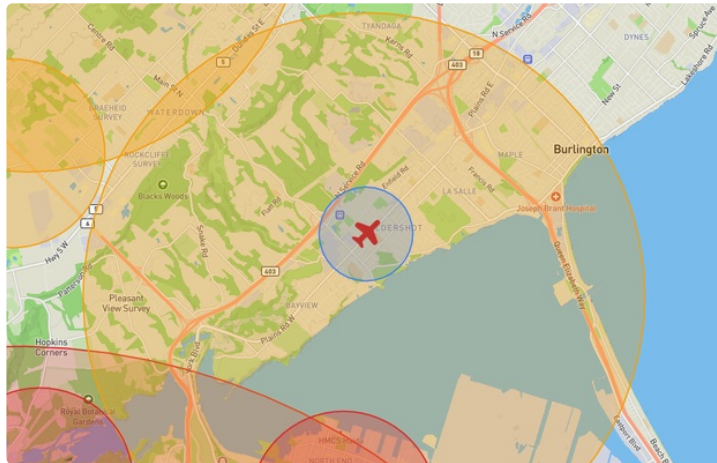
REPORT CONTENTS

Site Survey • Obstacles (if available) • Nearby Aerodromes • Canadian Aviation Regulations • GFA • Aerodrome Supplements • METAR & TAF • NOTAMs • CFS





Flight Map & MODEL Details

MISSION LOCATION SURVEY

FLIGHT AREA MAP



MISSION LOCATION DETAILS

ROLE	LATITUDE	LONGITUDE
 MODEL	43° 18' 35.54" N 43.31	79° 50' 57.20" W -79.849
 Pilot		
 Payload Op.		
 Observer		

Airspace Classification

MISSION LOCATION SURVEY

AIRSPACE MAP



OVERLYING AIRSPACES

Class	Name	Floor	Ceiling
E	Southern Ontario Low Level Control Area c) [CAE]	6500MSL	18000MSL
E	Toronto, ON [TSP]	6500MSL	12500MSL
E	3.4.1-43 [TA]	700AGL	18000MSL
C	Toronto, ON c) [TCA]	2500MSL	3500MSL
C	Toronto, ON d) [TCA]	3500MSL	4500MSL
C	Toronto, ON e) [TCA]	4500MSL	12500MSL
E	T781 Fixed RNAV Route	2200AGL	18000MSL
C	Toronto, ON b) [TCA]	2000MSL	2500MSL
D	Hamilton, ON [CZ]	SFC	4500MSL

NEAREST AERODROMES & DISTANCE FROM OPERATION

HAMILTON HARBOUR (CHH2 - WATERDROME - Reg)	Lat: 43.299	Long: -79.85	1.222KM	0.66NM	S
HAMILTON (GEN HOSPITAL) (CPK3 - HELIPORT - Mil)	Lat: 43.262	Long: -79.855	5.379KM	2.904NM	S
FLAMBORO CENTRE (CFC8 - AERODROME - Reg)	Lat: 43.371	Long: -79.932	9.53KM	5.146NM	NW

CANADA WATER AERODROME SUPPLEMENT

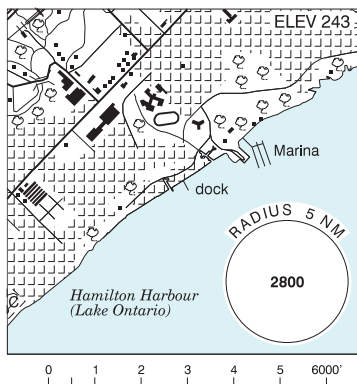
Effective 0901Z 19 March 2026 to 0901Z 18 February 2027

AERODROME/FACILITY DIRECTORY B23

BURLINGTON / HAMILTON HARBOUR ON

CHH2

REF	N43 17 56 W79 50 59 2.72SW 10°W (2014) UTC-5(4) Elev 243' VTA A5000
OPR	Peter Stewart 905-379-5263 Reg PPR
PF	C-2,3,4,5,6
FLT PLN	FIG London 866-WXBRIEF (Toll free within Canada) or 866-541-4104 (Toll free within Canada & USA)
SERVICES	S 7
A/D DATA	Open water Apr-Oct, mud sand bottom, depth 4'.
COMM	ATF tfc 122.8 2NM excluding Hamilton CZ 3300 ASL
CAUTION	Lgt'd twr 1787 ASL (1000 AGL) aprx 5NM WNW of A/D.

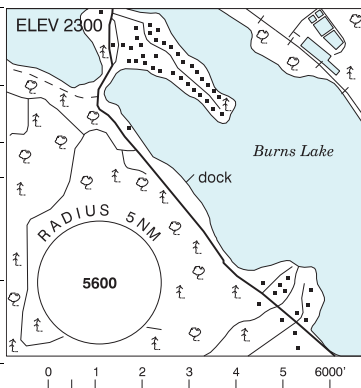


BURNEGIE BAY ON — See LAKE JOSEPH / BURNEGIE BAY

BURNS LAKE (LD AIR) BC

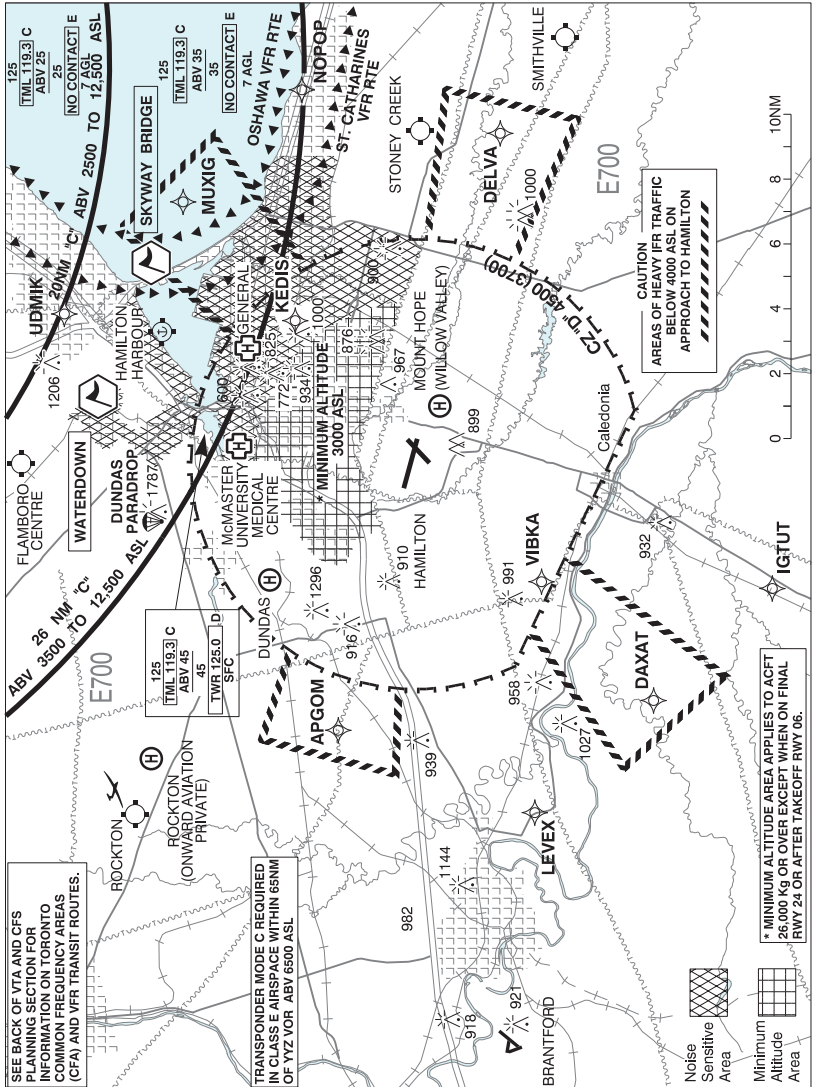
CLD3

REF	N54 12 37 W125 45 27 1.4SSE 19°E (2011) UTC-8(7) Elev 2300' A5013
OPR	Lakes District Air Svcs 250-692-3229 Reg PN
PF	B-1,3 C-2,4,5,6
FLT PLN	FIG Kamloops 866-WXBRIEF (Toll free within Canada) or 866-541-4101 (Toll free within Canada & USA)
SERVICES	PN
FUEL	100LL
OIL	25-60, 15W50, 20-50
A/D DATA	Open water May to mid-Nov. Depth 8' at dock, muddy bottom.
COMM	ATF tfc 123.2 5NM 5300 ASL
PRO	Avoid circuit over town and tkof in front of houses on lake.
CAUTION	Burns Lake land A/D aprx 7NM NW. Heli status unkn 1.5NM N. Twr on hill abv dock 150 AGL.



BUTTERFLY LAKE ON — See PORT CARLING / BUTTERFLY LAKE

HAMILTON VFR TERMINAL PROCEDURES CHART



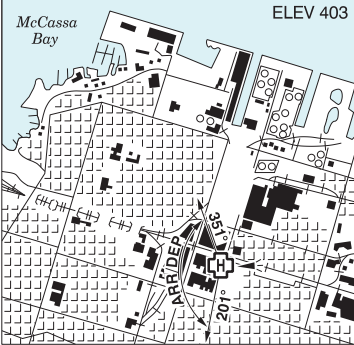
NAME	IDENT	LAT/LONG
SKYWAY BRIDGE	VCBBR	N43° 18' 00" W079° 47' 45"
WATERDOWN	VCWTD	N43° 19' 45" W079° 53' 15"

ONTARIO

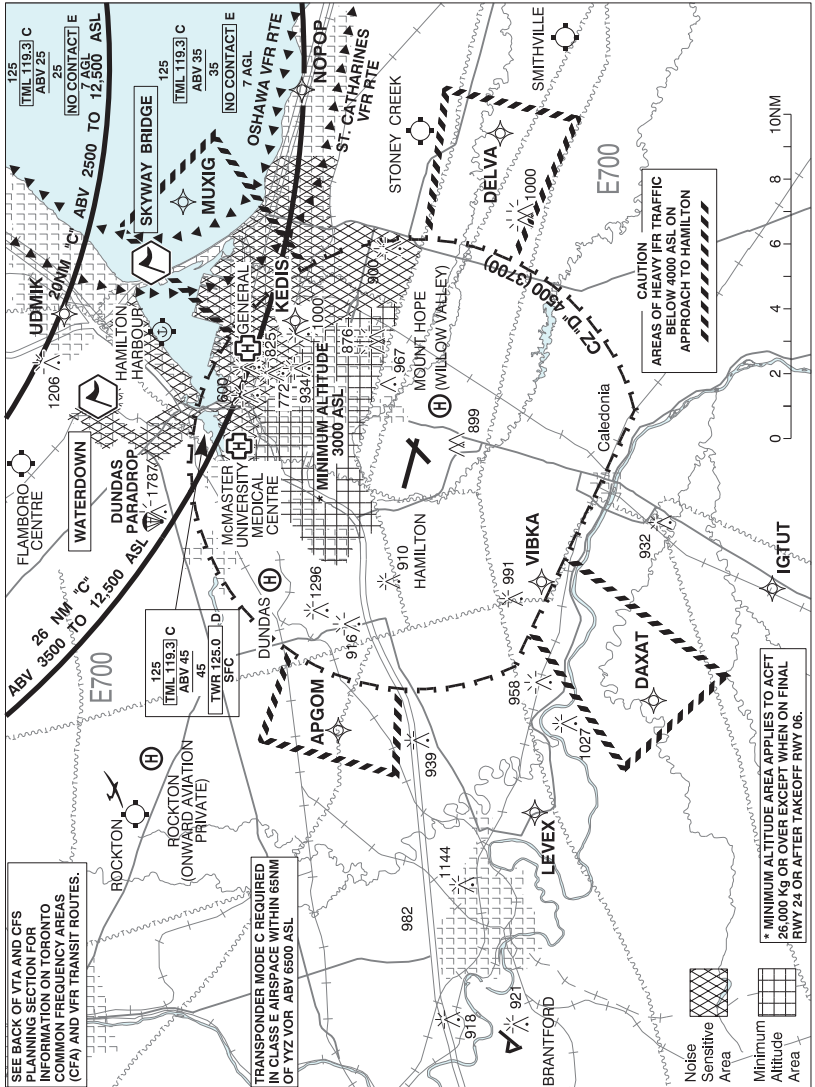
AERODROME / FACILITY DIRECTORY

HAMILTON (GEN HOSP) ON (Heli)

CPK3

REF	N43 15 43 W79 51 17 Adj 10°W UTC-5(4) Elev 403' VTA A5000	
OPR	Hamilton Gen Hosp 905-521-2100 Cert PPR	
PF	A-1 B-2,3,4,7,8 C-5,6	
FLT PLN	FIC London 866-WXBRIEF (Toll free within Canada) or 866-541-4104 (Toll free within Canada & USA)	
HELI DATA	FATO 86' dia non-supporting TLOF 57' dia octagonal ROOFTOP/ALUMINUM Safety Area 115' dia 16,000 lbs Max heli overall length 57.4' RCR Opr	
LIGHTING	RY(LO) (green) RF(FL)	
COMM	TWR Hamilton 125.0 A/G Ambulance dispatch 129.275	
PRO	Arr/dep btwn 201°-351° fr heli (H1).	
CAUTION	Bldg 448 AGL with lgtd WI aprx 73.5' E fr heli. Lgtd stack aprx 120' NNE fr heli. Lgtd rooftop eqpt 140' SE fr heli.	

HAMILTON VFR TERMINAL PROCEDURES CHART



NAME	IDENT	LAT/LONG
SKYWAY BRIDGE	VCBBR	N43° 18' 00" W079° 47' 45"
WATERDOWN	VCWTD	N43° 19' 45" W079° 53' 15"

ONTARIO

AERODROME / FACILITY DIRECTORY

FLAMBORO CENTRE ON

CFC8

REF	N43 22 17 W79 55 55 Adj N 10°W (2015) UTC-5(4) Elev 813' A5000
OPR	Andy Cetinski 403-969-0222 Reg
PF	C-1,2,3,4
FLT PLN	
FIC	London 866-WXBRIEF (Toll free within Canada) or 866-541-4104 (Toll free within Canada & USA)
RWY DATA	Rwy 15(145°)/33(325°) 2394x100 GRASS
RCR	Opr No win maint
COMM	
ATF	tfc 123.2 2NM 3900 ASL
PRO	Right hand circuits (CAR 602.96)
CAUTION	Monitor 123.5 for Burlington tfc. Lgtd twr 1787 ASL (1000 AGL) aprx 4.3NM SSW of A/D.

