
FLIGHT PLAN & SITE SURVEY

FMAC (209) - Killarney Field

June 1, 2026



IMPORTANT NOTICE

Please ensure you have received all required authorizations prior to flight. This Site Survey was created using RPAS Wilco. The user accepts all responsibility for the accuracy of the information.

Terms & Conditions: rpswilco.com/#tnc

Mission Information

FMAC (209) - KILLARNEY FIELD

FLIGHT DETAILS

| | |
|--------------------|-----------------------------|
| Reference No: | 01BB40 |
| Pilot Name: | MAAC |
| Pilot Certificate: | |
| Mission Type: | VLOS |
| Flight Start: | June 1, 2026 3:11 PM |
| Flight End: | June 1, 2026 5:11 PM |

LOCATION DETAILS

| | |
|--------------------|--|
| Flight Address: | Nashwaak Trail, Nashwaak Village, New Brunswick E6C 1L5, Canada |
| Latitude: | 46° 5' 2.89" N (46.084) |
| Longitude: | 66° 36' 17.38" W (-66.605) |
| Field Elevation: | 49 ft MSL |
| Altitude / Radius: | 400 ft / 926.0 m (0.5 nm) |
| Classification: | UNCONTROLLED |
| FIR / Contact: | CZQM / 506-867-7173 |

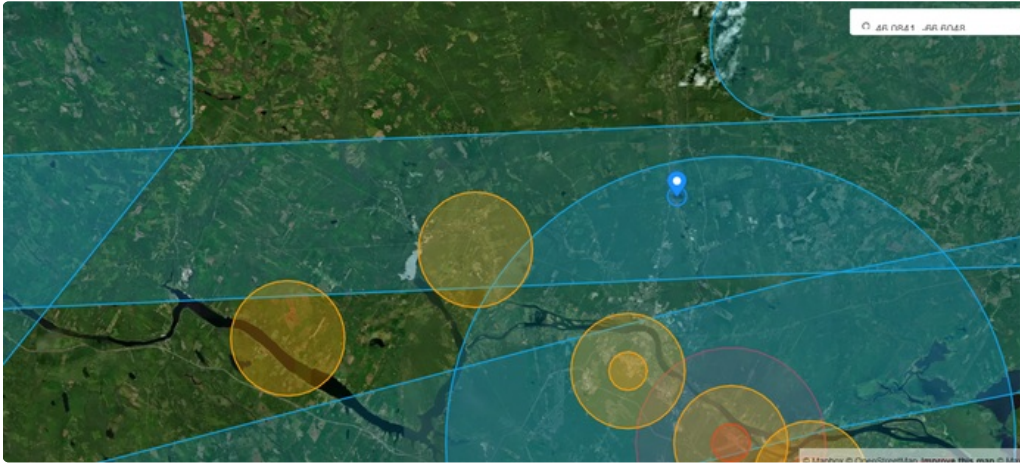
REPORT CONTENTS

Site Survey • Obstacles (if available) • Nearby Aerodromes • Canadian Aviation Regulations • GFA • Aerodrome Supplements • METAR & TAF • NOTAMs • CFS

Flight Map & MODEL Details

MISSION LOCATION SURVEY

FLIGHT AREA MAP



MODEL SPECIFICATIONS

MANUFACTURER

MAAC

MODEL

MODEL AIRPLANE

REGISTRATION

ADVANCED OPS

Yes


SAFETY ASSURANCE

Controlled Airspace **Yes**

Near People **N/A**

Over People **N/A**

MISSION LOCATION DETAILS

| ROLE | LATITUDE | LONGITUDE |
|---|--------------------------|-----------------------------|
|  MODEL | 46° 5' 2.89" N 46.084 | 66° 36' 17.38" W -66.605 |

Airspace Classification

MISSION LOCATION SURVEY

AIRSPACE MAP



OVERLYING AIRSPACES

| Class | Name | Floor | Ceiling |
|-------|-------------------------|---------|----------|
| E | T698-2 Fixed RNAV Route | 2200AGL | 18000MSL |
| E | Fredericton, NB [TA] | 700AGL | 18000MSL |

NEAREST AERODROMES & DISTANCE FROM OPERATION

| | | | | | |
|---|-------------|---------------|----------|---------|----|
| WEYMAN AIRPARK (CCG3 - AERODROME - Reg) | Lat: 46.038 | Long: -66.859 | 20.271KM | 10.95NM | W |
| FREDERICTON (RCMP) (CRC2 - HELIPORT - Reg) | Lat: 45.932 | Long: -66.667 | 17.585KM | 9.5NM | S |
| FREDERICTON INTL (CYFC - AERODROME/HELIPORT - Cert) | Lat: 45.869 | Long: -66.537 | 24.49KM | 13.22NM | S |
| GAGETOWN (CYCX - HELIPORT - DND) | Lat: 45.838 | Long: -66.437 | 30.288KM | 16.35NM | SE |
| SCOTTSFIELD AIRPARK (CCF9 - AERODROME - Reg) | Lat: 45.96 | Long: -67.095 | 40.286KM | 21.75NM | W |

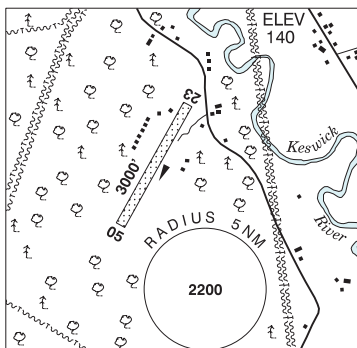
NEW BRUNSWICK

AERODROME / FACILITY DIRECTORY

WEYMAN AIRPARK NB

CCG3

| | |
|-----------------|---|
| REF | N46 02 15 W66 51 32 17°W (2015) UTC-4(3) Elev 140' A5003 |
| OPR | David Bradley 506-450-4087 Reg PPR |
| PF | B-1 C-2 D-3,4,5,6 |
| FLT PLN | |
| FIC | London 866-WXBRIEF (Toll free within Canada) or 866-541-4104 (Toll free within Canada & USA) |
| ACC | (IFR only) Moncton 506-867-7177 or 866-480-8200. |
| RWY DATA | Rwy 05/23 3000x80 SAND/GRVL/chip seal |
| RCR | Opr No win maint |
| COMM | |
| ATF | tfc 123.2 5NM 3100 ASL |
| CAUTION | Glider activity Apr 15-Dec 15. Rwy may be soft during thaw. Scottfield Airpark aprx 12NM W, ATF 123.2. |



NEW BRUNSWICK

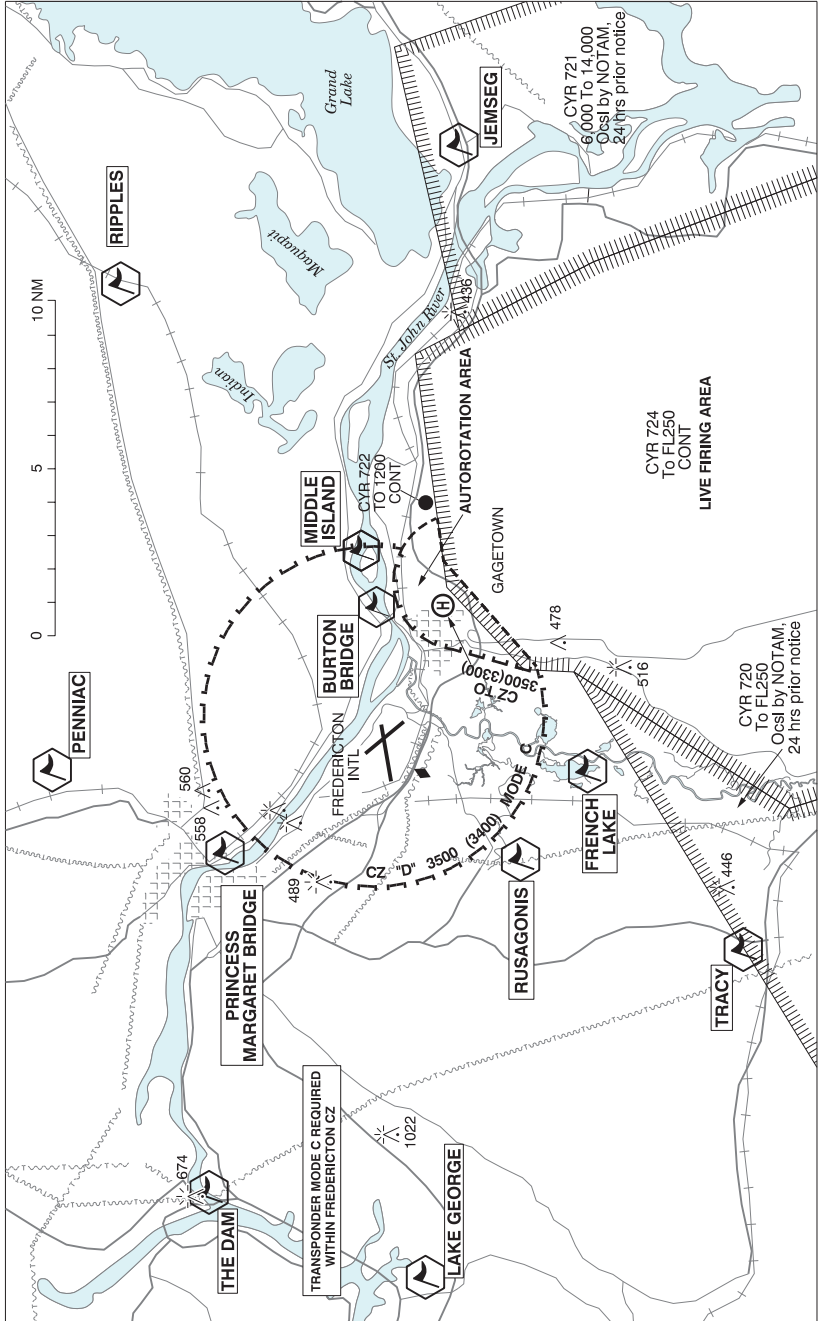
AERODROME / FACILITY DIRECTORY

FREDERICTON (RCMP) NB (Heli)

CRC2

| | | |
|------------------|---|--|
| REF | N45 55 54 W66 40 00 Adj 18°W (2014) UTC-4(3) Elev 369' A5003 | |
| OPR | RCMP 506-451-6050 Reg PPR | |
| FLT PLN | | |
| FIC | London 866-WXBRIEF (Toll free within Canada) or 866-541-4104 (Toll free within Canada & USA) | |
| ACC | (IFR only) Moncton 506-867-7177 or 866-480-8200. | |
| HELI DATA | FATO/TLOF 77' x 77' ASPH | |
| LIGHTING | RF(FL) DR(LO) Arr/dep 150° fr heli | |
| COMM | | |
| ATF | tfc 123.2 5NM 3400 ASL excluding Fredericton Intl CZ | |
| PRO | Arr/dep 150° & 313° fr heli. Ctc Fredericton TWR 119.0 1045-0345Z± O/T Saint John rdo 119.0 prior to arr/dep to advise intentions. | |

FREDERICTON VFR TERMINAL PROCEDURES CHART



FREDERICTON VFR TERMINAL PROCEDURES CHART (Cont'd)

| NAME | IDENT | LAT/LONG |
|--------------------------|-------|----------------------------|
| BURTON BRIDGE | VCBTB | N45° 51' 54" W066° 27' 05" |
| FRENCH LAKE | VCFRL | N45° 46' 00" W066° 33' 47" |
| JEMSEG | VCJMS | N45° 49' 44" W066° 07' 00" |
| LAKE GEORGE | VCLKG | N45° 51' 19" W066° 55' 34" |
| MIDDLE ISLAND | VCMDI | N45° 52' 45" W066° 24' 58" |
| PENNIAC | VCPNC | N46° 02' 00" W066° 35' 04" |
| PRINCESS MARGARET BRIDGE | VCRMB | N45° 56' 29" W066° 37' 33" |
| RIPPLES | VCRPL | N46° 00' 00" W066° 13' 00" |
| RUSAGONIS | VCRUS | N45° 48' 00" W066° 37' 28" |
| THE DAM | VCDAM | N45° 57' 23" W066° 52' 13" |
| TRACY | VCTRC | N45° 41' 03" W066° 41' 05" |

VFR ROUTE PROCEDURES

DEPARTURES:

MACTAQUAC (NW): Outbound clear circuit, direct MACTAQUAC Dam enroute. Altitude: Climb to and maintain 2600 ft until clear of CZ.

RIPPLES (ENE): Outbound clear circuit, direct RIPPLES enroute, maintain North of the VOR at all times. Altitude: Climb to and maintain 2600 ft until clear of CZ and then maintain 3000 ft until training area or at/abeam Grand Lake.

PENNIAC DEPARTURE (N): Outbound clear circuit direct PENNIAC enroute. Altitude: Climb to and maintain 2600 ft until clear of CZ.

JEMSEG (SE): Outbound: Follow RIPPLES DEPARTURE, then turn right (south) to JEMSEG enroute. Altitude: Climb to and maintain 3000 ft until at/abeam JEMSEG.

TRACY (SW): Outbound clear circuit, direct TRACY enroute. Altitude: Climb to and maintain 2600 ft until clear of CZ.

Departing aircraft must join the route as soon as practicable after departure (i.e. once clear of the circuit unless instructed by ATC to turn after departure), follow the routes as described and maintain 2,600 feet until they have departed the Fredericton CZ.

ARRIVALS:

HWY10 (ENE): Inbound direct RIPPLES, follow Hwy 10 until North of airport, then direct CYFC. Maintain North of VOR at all times. Altitude: If inbound from East, descend to 2500 ft before Grand Lake, then descend to and maintain 1600 ft prior to entering CZ.

LAKE GEORGE (NW): Inbound direct Hwy 2 and Hwy 3 intersection, direct CYFC, maintain North of apch Rwy 09 at all times. Altitude: Descend to and maintain 1600 ft prior to entering CZ.

PENNIAC (N): Inbound direct PENNIAC, direct CYFC. Altitude: Descend to and maintain 1600 ft prior to entering CZ.

JEMSEG (SE): Inbound direct JEMSEG, direct RIPPLES, then follow HWY10 ARRIVAL. Altitude: Descend to 2500 ft at/abeam JEMSEG, then descend to and maintain 1600 ft prior to entering CZ.

TRACY: Inbound direct TRACY, direct CYFC. Altitude: Descend to and maintain 1600 ft prior to entering CZ.

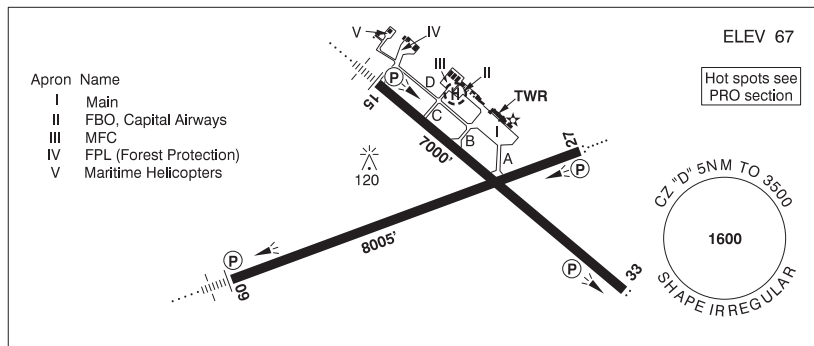
Arriving aircraft must enter the Zone at 1,600', once inside CZ, descend at pilot's discretion, unless otherwise instructed, cleared or requested to maintain a specific altitude.

NEW BRUNSWICK

AERODROME / FACILITY DIRECTORY

FREDERICTON INTL NB

CYFC



| | |
|------------------|--|
| REF | N45 52 08 W66 32 14 7SE 18°W (2014) UTC-4(3) Elev 67' A5003 LO8 HI6 CAP OC |
| OPR | Fredericton International Airport Authority Inc. 506-460-0920 0845-0515Z† Cert |
| PF | A-1,2,3,6,7 C-4,5 |
| CUST | AOE/55 (140 with staged off-loading) 12-04Z† 888-226-7277 |
| FLT PLN | <p>FIG London 866-WXBRIEF (Toll free within Canada) or 866-541-4104 (Toll free within Canada & USA)</p> <p>ACC (IFR only) Moncton 506-867-7177 or 866-480-8200.</p> <p>WX METAR AUTO H24 WxCam TAF H24, issue times: 00, 06, 12, 18Z.</p> |
| SERVICES | Call out chg may be levied for one or more svcs |
| FUEL | 100LL, JA-1 (FSII avbl), F-34, IP, HPR |
| OIL | 15W50 |
| S | 1,2,4,6 Capital Airways |
| ARFF | DESIGNATED CAT 6 (CAT 7 4 hr PN) 0845-0515Z† |
| JASU | CE16 Capital Airways |
| PVT ADV | Capital Airways Inc. 122.87 506-446-3588 12-22Z† O/T PN 506-238-3653 call out chg. Air Canada Ground Handling 130.375 506-446-6133 |
| MIL CON | Menzies Aviation/ASIG 1-506-470-2320 |
| RWY DATA | Rwy 09(087°)/27(267°) 8005x200 ASPH Rwy 15(148°)/33(328°) 7000x150 ASPH RESA: Rwy 15 492' |
| RWY CERT | Rwy 09 RVR 1200(1/4 sm)/Rwy 27 RVR 1200(1/4 sm) AGN V Rwy 15 RVR 1200(1/4 sm)/Rwy 33 RVR 1200(1/4 sm) AGN V |
| TWY CERT | Twy C AGN II Twy D AGN IIIB |
| TWY | Twy C uncontrolled NE of Twy D |
| HELI DATA | Parking Pad: 60' dia ASPH Max heli overall length 49' |
| RCR | Opr CRFI, win maint 0915-0400Z† PN for extended svc. PCN |
| LIGHTING | 09-AN(TE HI) P2, 27-AO(TE HI) P2, 15-AN(TE HI) P2, 33-AS(TE HI) P2 ARCAL-119.0 type K (when twr closed) |

NEW BRUNSWICK

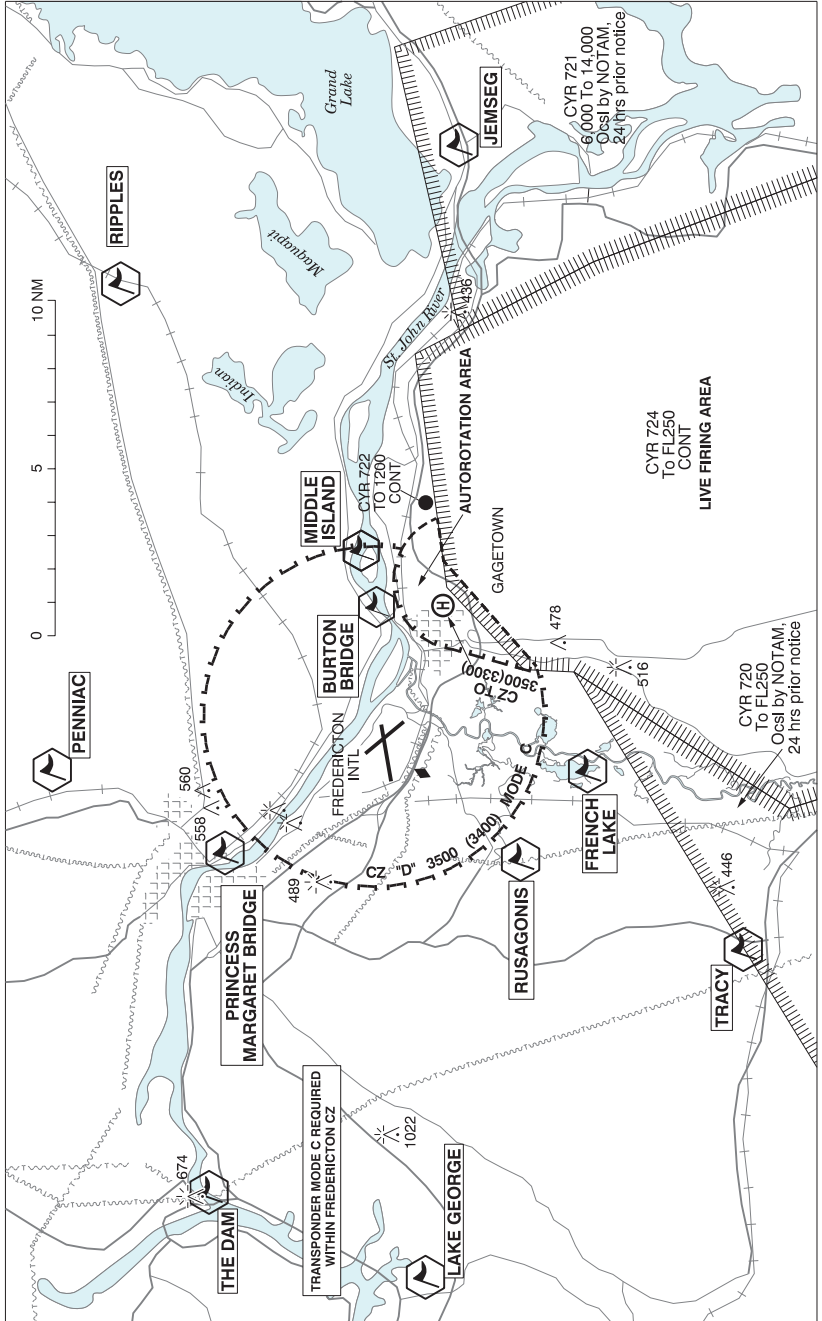
AERODROME / FACILITY DIRECTORY

FREDERICTON INTL NB (Cont'd)

CYFC

| | | |
|----------------|--|--|
| COMM | RCO | Saint John rdo 119.0 PTC avbl (RAAS) 0345-1045Z† (emerg only 506-646-7223) |
| | ATIS | 127.55 1045-0345Z† (O/T AWOS) |
| | GND | 121.7 1045-0345Z† |
| | TWR | 119.0 (E) 1045-0345Z† (emerg only 506-446-3420) |
| | MF | Saint John rdo 119.0 0345-1045Z† 5NM 3500 ASL (CAR 602.98) |
| | PAL | Moncton Ctr 124.3 135.5 270.8 |
| NAV | DME | IDC 111.3 Ch 50 N45 51 47 W66 32 52 (86') |
| | ILS | IDC 111.3 (Rwy 09) RVR |
| PRO | <p>Pivot turnaround proh; acft must use all avbl rwy width when making turnaround. Dep Rwy 15 turn as soon as practicable after tkof to remain clear of CYR724. Transponder MODE C required within the Fredericton CZ. Pilots should refer to Canadian Airport Charts (CAC) to obtain details on established hot spots, prior to operating on maneuvering areas. CAC are available for free on the NAV CANADA website.</p> <p>VFR ARR/DEP ROUTES: See FREDERICTON VTPC - TRAINING AREAS</p> | |
| CAUTION | <p>RESTRICTED AREAS: Extv live firing in CYR724, 725 4NM SE of aprt. AIRSPACE: Gagetown Class "E" CZ 3.5NM SE to 3500 ASL.</p> | |

FREDERICTON VFR TERMINAL PROCEDURES CHART



FREDERICTON VFR TERMINAL PROCEDURES CHART (Cont'd)

| NAME | IDENT | LAT/LONG |
|--------------------------|-------|----------------------------|
| BURTON BRIDGE | VCBTB | N45° 51' 54" W066° 27' 05" |
| FRENCH LAKE | VCFRL | N45° 46' 00" W066° 33' 47" |
| JEMSEG | VCJMS | N45° 49' 44" W066° 07' 00" |
| LAKE GEORGE | VCLKG | N45° 51' 19" W066° 55' 34" |
| MIDDLE ISLAND | VCMDI | N45° 52' 45" W066° 24' 58" |
| PENNIAC | VCPNC | N46° 02' 00" W066° 35' 04" |
| PRINCESS MARGARET BRIDGE | VCRMB | N45° 56' 29" W066° 37' 33" |
| RIPPLES | VCRPL | N46° 00' 00" W066° 13' 00" |
| RUSAGONIS | VCRUS | N45° 48' 00" W066° 37' 28" |
| THE DAM | VCDAM | N45° 57' 23" W066° 52' 13" |
| TRACY | VCTRC | N45° 41' 03" W066° 41' 05" |

VFR ROUTE PROCEDURES

DEPARTURES:

MACTAQUAC (NW): Outbound clear circuit, direct MACTAQUAC Dam enroute. Altitude: Climb to and maintain 2600 ft until clear of CZ.

RIPPLES (ENE): Outbound clear circuit, direct RIPPLES enroute, maintain North of the VOR at all times. Altitude: Climb to and maintain 2600 ft until clear of CZ and then maintain 3000 ft until training area or at/abeam Grand Lake.

PENNIAC DEPARTURE (N): Outbound clear circuit direct PENNIAC enroute. Altitude: Climb to and maintain 2600 ft until clear of CZ.

JEMSEG (SE): Outbound: Follow RIPPLES DEPARTURE, then turn right (south) to JEMSEG enroute. Altitude: Climb to and maintain 3000 ft until at/abeam JEMSEG.

TRACY (SW): Outbound clear circuit, direct TRACY enroute. Altitude: Climb to and maintain 2600 ft until clear of CZ.

Departing aircraft must join the route as soon as practicable after departure (i.e. once clear of the circuit unless instructed by ATC to turn after departure), follow the routes as described and maintain 2,600 feet until they have departed the Fredericton CZ.

ARRIVALS:

HWY10 (ENE): Inbound direct RIPPLES, follow Hwy 10 until North of airport, then direct CYFC. Maintain North of VOR at all times. Altitude: If inbound from East, descend to 2500 ft before Grand Lake, then descend to and maintain 1600 ft prior to entering CZ.

LAKE GEORGE (NW): Inbound direct Hwy 2 and Hwy 3 intersection, direct CYFC, maintain North of apch Rwy 09 at all times. Altitude: Descend to and maintain 1600 ft prior to entering CZ.

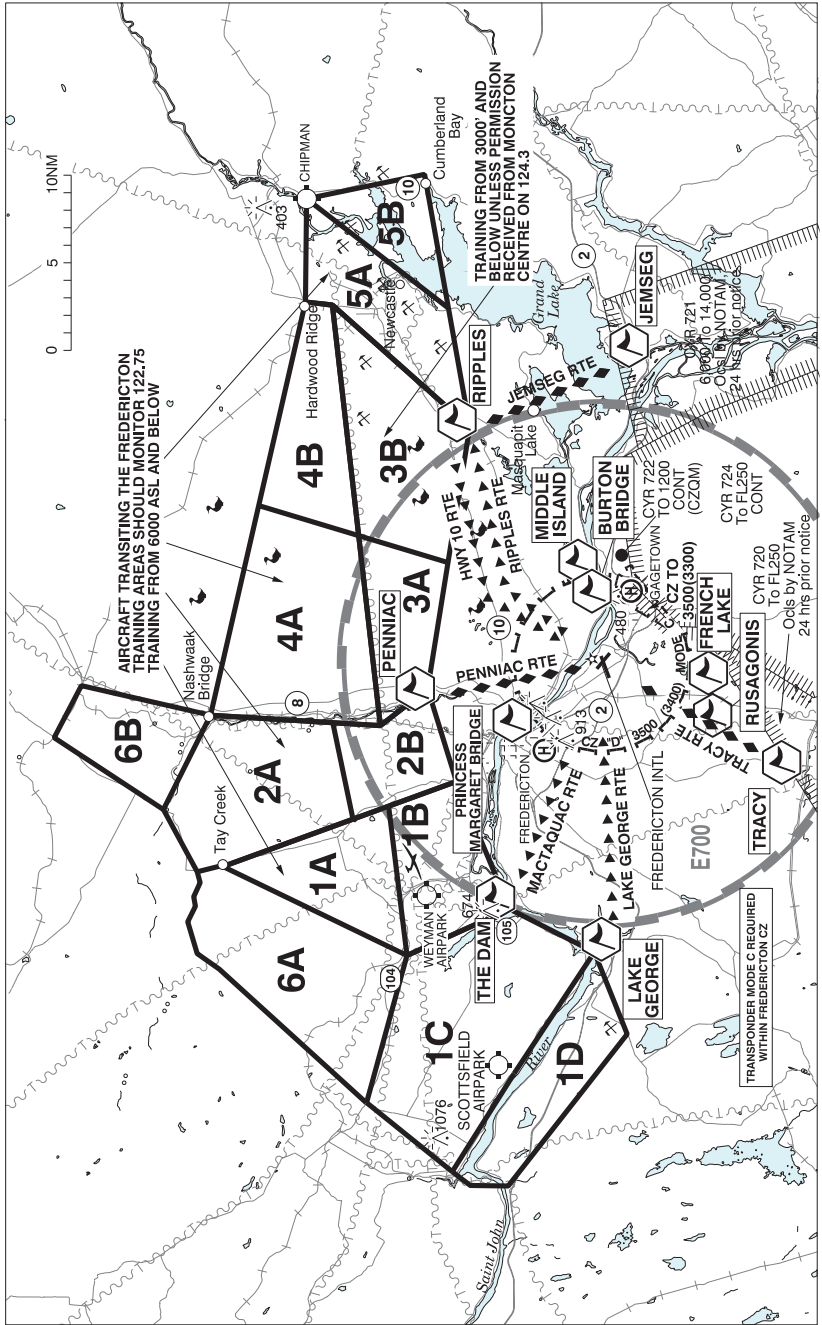
PENNIAC (N): Inbound direct PENNIAC, direct CYFC. Altitude: Descend to and maintain 1600 ft prior to entering CZ.

JEMSEG (SE): Inbound direct JEMSEG, direct RIPPLES, then follow HWY10 ARRIVAL. Altitude: Descend to 2500 ft at/abeam JEMSEG, then descend to and maintain 1600 ft prior to entering CZ.

TRACY: Inbound direct TRACY, direct CYFC. Altitude: Descend to and maintain 1600 ft prior to entering CZ.

Arriving aircraft must enter the Zone at 1,600', once inside CZ, descend at pilot's discretion, unless otherwise instructed, cleared or requested to maintain a specific altitude.

FREDERICTON VFR TERMINAL PROCEDURES CHART - TRAINING AREAS



NEW BRUNSWICK

AERODROME / FACILITY DIRECTORY

GAGETOWN NB (Heli)

CYCX

| | | | |
|------------------|---|--|----------|
| REF | N45 50 16 W66 26 12 5SE 16°W (2022) UTC-4(3) Elev 166' A5003 | | ELEV 166 |
| OPR | DND 506-422-2394 CSN 319-432-2394 Mil PPR | | |
| FLT PLN | <p>FIG London 866-WXBRIEF (Toll free within Canada) or 866-541-4104 (Toll free within Canada & USA)</p> <p>ACC (IFR only) Moncton 506-867-7177 or 866-480-8200.</p> <p>MIL on site Ltd hrs</p> <p>WX Met brief for mil only. Lcl Met Section CSN 432-2613, JMC 1-800-WXMETEO (996-3836). (See COMM). METAR during mil flt ops. TAF dur mil flt ops, issue times depending on mil requirements.</p> | | |
| PF | B-1 C-2,3,4,5 | | |
| SERVICES | 403 Sqn svcg call "FIVE" 321.8 ltd hrs Mon-Fri exc hols | | |
| FUEL | F-34 | | |
| OIL | 156 | | |
| ARFF | CAT 2 | | |
| MIL ADV | 403 Sqn Ops call "WOLF OPS" 321.8 ltd hrs Mon-Fri exc hols | | |
| HELI DATA | 150' x 150' Ctr of Pad N45 50.2 W66 26.2 Twy A 094°. Twy B 011°. | | |
| LIGHTING | DR RY(HI) Non std | | |
| COMM | <p>MF 126.4 263.3 (E) Gagetown advsy avbl 11Z-0300Z± Mon-Fri O/T ltd hrs. Opr dates & hrs may vary without notice</p> <p>PAL Moncton Ctr 124.3 135.5 270.8</p> <p>MIL 46.8FM call sign Flt Following ltd hrs 49.9FM call sign Rng Ctl</p> | | |
| PRO | Over flt of built up area 1.0NM W of heli proh below 1000 AGL Autorotation area lctd 0.5NM NNE of helipad. Circuits for helipad are left hand or opposite to Autorotation circuit when Autorotation area active. Autorotation area only active when MFAU open. Due to close proximity to Fredericton Intl, Transit thru Burton Bridge for CYCX arr only, not auth for dep fr CYCX to CYFC. For transit to Rwy 27 at CYFC acft are to transit to the ammunition storage area (N45 51.05 W066 20.43). For transit to Rwy 09 at CYFC acft are to transit to the North Y (N45 49.05 W066 24.86). For VFR practice approach COPTER RNAV (GNSS) 249, published missed approach not authorized. Crews are to contact Mtc Ctr (124.3) prior to commencing the VFR practice approach for traffic advisories and monitor CYFC Twr (119.0) during the VFR practice approach. | | |
| CAUTION | <p>HELI TRAFFIC: Extv heli activity around Gagetown day & night.</p> <p>RESTRICTED AREAS: Live firing in CYR 724 & CYR 725. Unless specifically authorized remain clear.</p> <p>JET TRAFFIC: Presence of mil jet acft in the range often unannounced. Unskd dly radiosonde balloon launches with an ascent rate of 1000 ft/min in the vic of Heli.</p> | | |

NEW BRUNSWICK

AERODROME / FACILITY DIRECTORY

SCOTTSFIELD AIRPARK NB

CCF9

| | | |
|-----------------|---|--|
| REF | N45 57 37 W67 05 43 17°W (2015) UTC-4(3) Elev 600' A5003 | |
| OPR | Ernie McLean 506-575-1910/8615 506-260-2932 Reg | |
| PF | B-1 C-2,3 D-3,4,5 | |
| FLT PLN | <p>FIC London 866-WXBRIEF (Toll free within Canada) or 866-541-4104 (Toll free within Canada & USA)</p> <p>ACC (IFR only) Moncton 506-867-7177 or 866-480-8200.</p> | |
| SERVICES | <p>OIL 15W50</p> <p>S 4,5</p> | |
| RWY DATA | Rwy 05/23 2500x100 GRASS | |
| RCR | Opr No win maint First 400' each rwy soft in spring/fall | |
| COM | | |
| ATF | tfc 123.2 5NM 3600 ASL | |
| CAUTION | Weyman Airpark aprx 12NM E, ATF 123.2. | |