
FLIGHT PLAN & SITE SURVEY

SITE SURVEY (114) MOOSE JAW R/C AIRCRAFT CLUB-5873 Moose Jaw Municipal Airport static

March 15, 2026



IMPORTANT NOTICE

Please ensure you have received all required authorizations prior to flight. This Site Survey was created using RPAS Wilco. The user accepts all responsibility for the accuracy of the information.

Terms & Conditions: rpaswilco.com/#tnc

Mission Information

SITE SURVEY (114) MOOSE JAW R/C AIRCRAFT CLUB-5873 MOOSE JAW MUNICIPAL AIRPORT STATIC

FLIGHT DETAILS

Reference No:	3D89AA
Pilot Name:	Alain Carpentier
Pilot Certificate:	PC2306520264
Mission Type:	VLOS
Flight Start:	March 15, 2026 8:14 AM
Flight End:	March 15, 2026 10:14 AM

LOCATION DETAILS

Flight Address:	Highway 301, Tuxford, Saskatchewan S0H 4C0, Canada
Latitude:	50° 26' 1.71" N (50.434)
Longitude:	105° 23' 24.37" W (-105.39)
Altitude / Radius:	400 ft / 926.0 m (0.5 nm)
Classification:	UNCONTROLLED
FIR / Contact:	CZWG / 204-983-8338

REPORT CONTENTS

Site Survey • Obstacles (if available) • Nearby Aerodromes • Canadian Aviation Regulations • GFA • Aerodrome Supplements • METAR & TAF • NOTAMs • CFS

BEST SELLER

FlySafe

Drone Protection Plans

FlySafe

Commercial

✓ Covers multiple drones

✓ Flexible liability limits

✓ Exclusive savings

FlySafe

Recreational

✓ MAAC Membership

✓ Off-Site Flyer Program

✓ \$10M Liability Protection

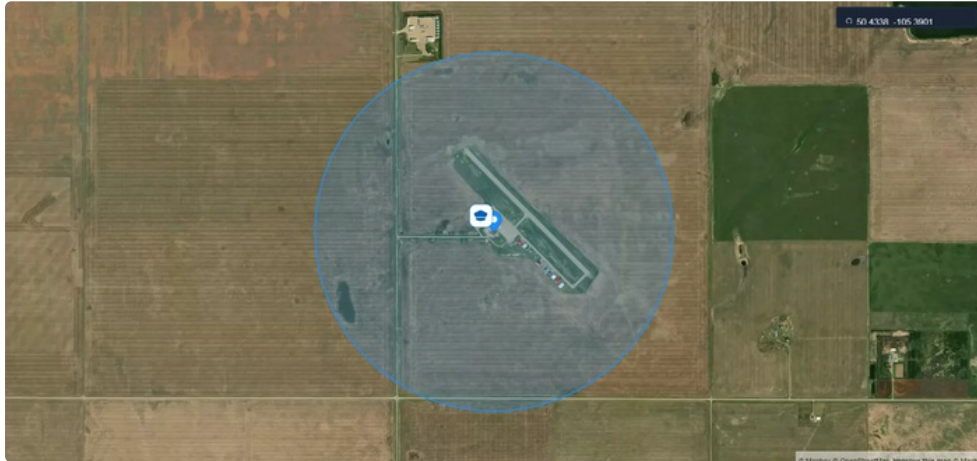
Find the
Right Plan
for You



Flight Map & MODEL Details

MISSION LOCATION SURVEY

FLIGHT AREA MAP



MODEL SPECIFICATIONS

MANUFACTURER

MAAC

MODEL

MODEL AIRPLANE

REGISTRATION

C-2315325447

ADVANCED OPS

N/A



SAFETY ASSURANCE

Controlled Airspace **Yes**

Near People **N/A**

Over People **N/A**

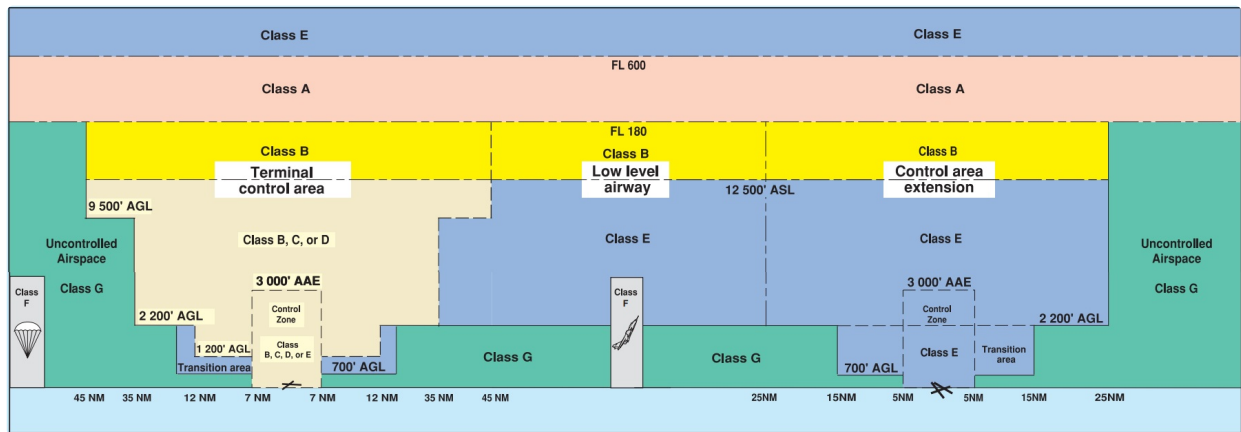
MISSION LOCATION DETAILS

ROLE	LATITUDE	LONGITUDE
 MODEL	50° 26' 1.71" N 50.434	105° 23' 24.37" W -105.39
 Pilot Alain Carpentier	50° 26' 4.41" N 50.4346	105° 23' 27.77" W -105.391

Airspace Classification

MISSION LOCATION SURVEY

AIRSPACE MAP



OVERLYING AIRSPACES

Class	Name	Floor	Ceiling
B	3.3.2-48 [CAE]	12500MSL	18000MSL
E	Moose Jaw, SK d) [TCA]	700AGL	18000MSL

NEAREST AERODROMES & DISTANCE FROM OPERATION

MOOSE JAW MUNI (CJS4 - AERODROME - Reg)	Lat: 50.434	Long: -105.386	0.291KM	0.16NM	E
MOOSE JAW (DR. F. H. WIGMORE REGIONAL HOSP) (CWH6 - HELIPORT - Reg)	Lat: 50.42	Long: -105.526	9.748KM	5.26NM	W
AIR VICE MARSHAL C.M. MCEWEN (CYM) - AERODROME - DND)	Lat: 50.33	Long: -105.559	16.633KM	8.98NM	SW
DISLEY (CDS2 - AERODROME - Reg)	Lat: 50.636	Long: -105.036	33.642KM	18.17NM	NE
BRIERCREST SOUTH (CBS7 - AERODROME - Reg)	Lat: 50.066	Long: -105.301	41.386KM	22.35NM	S

SASKATCHEWAN

AERODROME / FACILITY DIRECTORY

MOOSE JAW MUNI SK

CJS4

REF	N50 26 01 W105 23 10 7ENE 10°E (2013) UTC-6 Elev 1904' A5006 LO2 CAP	
OPR	Provincial Airways 306-692-7335 (After hrs 306-630-8870) Reg	
PF	B-1 D-2,3,4,5,6	
FLT PLN	FIC Edmonton 866-WXBRIEF (Toll free within Canada) or 866-541-4102 (Toll free within Canada & USA)	
SERVICES	FUEL 100LL, JA-1 (FSII Avbl) Self-serve OIL All S 1, 2, 3, 4, 5, 6	
RWY DATA	Rwy 13(125°)/31(305°)4000x75 ASPH AGN IIIA RCR Opr	
LIGHTING	13-(TE LO), 31-(TE LO) ARCAL-122.8 type J	
COMM	ATF UNICOM ltd hrs O/T tfc 122.8 5NM 4900 ASL excluding the CYMJ Class "D" CZ. Apt in close proximity to CFB Moose Jaw Class "D" CZ, for fit info ctc TWR 126.2	
PRO	Rgt hand circuits Rwy 31 (CAR 602.96). Civilian training areas: See MOOSE JAW / AIR VICE MARSHAL C.M. McEWEN VFR TERMINAL PROCEDURES CHART	
CAUTION	Ocsl parajump activity within 2NM of A/D daylight hours Apr 1-Nov 15, activated by NOTAM, max alt 12,500 ASL. P-line 2046 ASL 0.4NM SE Thld 31. Grain bins 1981 ASL 0.4NM NW Thld 13.	

SASKATCHEWAN

AERODROME / FACILITY DIRECTORY

MOOSE JAW (DR. F. H. WIGMORE REGIONAL HOSP) SK (Heli)

CWH6

REF	N50 25 12 W105 31 32 Adj N 10°E (2016) UTC-6 Elev 1879' A5006	
OPR	Dr. F.H. Wigmore Regional Hosp 306-694-0275 Cert PPR	
PF	A-1,2,4 C-3,5,6,7,8	
FLT PLN	FIC Edmonton 866-WXBRIEF (Toll free within Canada) or 866-541-4102 (Toll free within Canada & USA)	
HELI DATA	FATO/TLOF 86' dia CONC Safety Area 115' dia Max heli overall length 57.4'	
RCR	Opr	
LIGHTING	RW (LO) yellow	
COMM	MF Moose Jaw (CYMJ) TWR 126.2 ctc within 10NM 4900 ASL	
PRO	Arr/dep curved 064° to 099° fr heli, slope 16% (H2), day/night use. Arr/dep curved 264° to 279° fr heli, slope 16% (H2), day/night use.	
CAUTION	Lgt poles W, N, E of heli, marked with obst lgts. Hosp S of heli marked with lgts.	

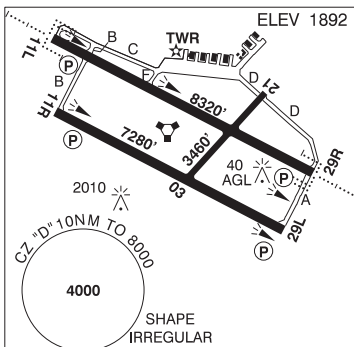
SASKATCHEWAN

AERODROME / FACILITY DIRECTORY

MOOSE JAW / AIR VICE MARSHAL C.M. McEWEN SK

CYMJ

REF	N50 19 49 W105 33 33 4S 9°E (2022) UTC-6 Elev 1892' A5006 LO2 HI3 HI4 CAP
OPR	DND Aeronautical Information Services 306-694-2222 Ext 5263 CSN 319-826-5263 All non-NFTC / CYMJ based acft PPR 48 hrs rqrd
PF	B-1 D-2,3,4,5,6 no pax fac avbl. Nova msg rqrd stating ETA, stop-over duration & no of pax
CUST	15 Wing acft only call 306-780-6223/6218



FLT PLN	FIC Edmonton 866-WXBRIEF (Toll free within Canada) or 866-541-4102 (Toll free within Canada & USA)
	MIL CSN 319-826-5263
	WX Met brief for mil only.
	CSN 826-5260 ltd hrs. O/T JMC 1-800-WXMETEO (996-3836) or CSN 432-2613. (See COMM). METAR dur flt ops. TAF dur flt ops, issue times depending on mil requirements.

SERVICES	All tran arr & dep 48 hrs PPR thru 15 Wg AIS 306-694-2222 Ext 5263 CSN 319-826-5263. Mil tran svc ltd 14-0030Z Mon-Fri (fr 1st Mon Nov to 3rd Mon Feb 1430-01Z Mon-Fri), 48 hrs PN or no svc avbl. All visiting acft rpt to 15 Wg AIS at 4 hg or ctc 694-2222 Ext 5263, upon arr & prior to dep.
FUEL	F-34, SP, Avbl 14-0030Z Mon-Fri (fr 1st Mon Nov to 3rd Mon Feb 1430-01Z Mon-Fri) O/T 48 hrs PN.
OIL	128, 133, 148, SOAP
ARFF	CAT 3
SUP FL	LHOX
JASU	CE13, 15, 16, CEA1

RWY DATA	Rwy 11L(109°)/29R(289°) 8320x150 ASPH Rwy 11R(109°)/29L(289°) 7280x150 ASPH Rwy 03(034°)/21(214°) 3460x100 ASPH
TWY	Twy B: Btwn Rwy 11L & Rwy 11R rstd to acft with wingspan of 75' or less.
RCR	Opr CRFI 14-0030Z Mon-Fri (fr 1st Mon Nov to 3rd Mon Feb 1430-01Z Mon-Fri) clsd Sat & Sun. Hrs may vary without ntc. Rwy 11R/29L PCN 62 F/D/X/T. Rwy 11L/29R PCN 139 F/D/X/T. Rwy 03/21 light acft only. Depression aprx 700' to 900' from thld 03, 15' rgt of centreline Rwy 03, aprx 4 inches wide and 1.5 inches deep. Twy F max wt 35000lbs. Ramp W of TWR PCN 62 R/A/X/T. Ramp E of TWR PCN 34 R/A/X/T.

LIGHTING	03-(T ME), 21-(T ME), 11L-AF SF(TE HI) P2 GPI 979' TCH 51', 29R-AF SF(TE HI) P2 GPI 1033' TCH 54', 11R-(TE HI) P2 GPI 1000' TCH 52', 29L-(TE HI) P2 GPI 1000' TCH 52'
-----------------	---

COMM	Avbl 14-0030Z Mon-Fri (fr 1st Mon Nov to 3rd Mon Feb 1430-01Z Mon-Fri), A/D frequently clsd Sat & Sun. Opr dates & hrs may vary without notice.
ATIS	131.3 257.8
CLNC DEL	135.3 234.4
GND	121.8 275.8
TWR	126.2 295.6 310.8 322.6 (E)
TML	119.0 227.6 342.9 (E)
ARR	119.0 129.1 134.1x 227.6 289.4x 308.3x 318.8x 374.1x 378.5x 381.3x (E)
DEP	119.0 227.6 342.9 (E)
PMSV	344.6 ltd hrs.

SASKATCHEWAN

AERODROME / FACILITY DIRECTORY

MOOSE JAW / AIR VICE MARSHAL C.M. McEWEN SK (Cont'd)

CYMJ

NAV	
VORTAC	YMJ 113.4 Ch 81 N50 19 52 W105 33 48 (1898') VOR maint 2nd Mon of the month 13-14Z. TACAN maint 3rd Thu of the month 13-15Z.
DME	IBP or IMJ 109.3 Ch 30 N50 19 51 W105 33 48 Maint 2nd Mon of the month 12-14Z
ILS	IMJ 109.3 (Rwy 29R) RVR or IBP 109.3 (Rwy 11L) Maint 2nd Mon of the month 12-14Z
PAR	119.0 227.6 (E) 14-0030Z Mon-Fri (fr 1st Mon Nov to 3rd Mon Feb 1430-01Z Mon-Fri) clsd Sat & Sun. Hrs may vary without notice. PAR maint 1st Tue of the month 13-16Z. PSR/SSR maint 1st Fri of the month 12-14Z
PRO	A/D clsd to unauthorized acft outside of twr opr hrs 14-0030Z Mon-Fri (fr Nov 1 to Feb 15 1430-01Z Mon-Fri). Acft unable to establish two-way comm with CYMJ ATC are proh fr taxi, tkof or ldg at the A/D exc in an emerg. All RCAF acft requesting enroute apch during twr ops hrs do not require PPR. Apch req appr at the discretion of CYMJ ATS subj to tfc density. All tran acft must ctc CYMJ gnd on 121.8/275.8 prior to engine start. On climb out in VFR wx, all acft to not exceed 2500 ASL until beyond dep end of rwy. Acft on IFR misd apchs in VMC should fly from the misd apch point to the rwy thld and track rwy centerline by best means until interception of the misd apch radial, where applicable. Rgt hand circuits Rwy 11R and 29R (CAR 602.96). Tfc Ptn - Conv 3000 ASL, Jet/High-perf turboprop 3500 MSL. CZ may be active outside published hrs. Glider activity wknds & hols within 3 NM of AD max alt 10,000 ASL Paradrop activity to 12,000 ASL within 1.5NM of Moose Jaw Muni. Civilian training areas: See MOOSE JAW / AIR VICE MARSHAL C.M. McEWEN VFR TERMINAL PROCEDURES CHART.
HELI	Dep & arr Helo 1 & 2 see VTPC. Arriving acft must ctc twr 295.6 or 126.2 prior to entering CZ & req Helo 1 or Helo 2 arr. Intercept inbound track within 10NM. Heli parking positions as directed by ATC (normally west side of control tower).
NOISE	All mil acft shall avoid flying over the city of Moose Jaw below 5000 ft ASL.
CAUTION	Rwy 21 - PSR twr 2010 ASL loc 2034' along & 767' rgt of dep end centreline. RPAS area (Hamilton Flats), 3.5NM NW of aerodrome YMJ R333 3.5 DME posn (N50 23 18 W105 35 12) max alt 400 AGL.

SASKATCHEWAN

AERODROME / FACILITY DIRECTORY

DISLEY SK

CDS2

REF	N50 38 09 W105 02 09 Adj E 9°E (2015) UTC-6 Elev 1850' A5006	
OPR	Vic Zubot 306-731-2249 Ron Wood 306-751-1064 Reg PPR	
PF	D-1,2,3,4,5,6	
FLT PLN	FIC Edmonton 866-WXBRIEF (Toll free within Canada) or 866-541-4102 (Toll free within Canada & USA)	
SERVICES	S 7	
RWY DATA	Rwy 11(107°)/29(287°) 2270x50 GRASS Thld 29 displ 232' West portion of Rwy 29 slopes down Rwy 17(171°)/35(351°) 1137x65 GRASS Thld 17 displ 232' Thld 35 displ 324' Rwy 17 slopes down	
RCR	Opr Ltd win maint.	
COMM	ATF tfc 123.2 5NM 4900ASL	
CAUTION	Road at both ends and ditches along both sides of rwys. Aprx 6' fence along E side of road at E end of rwy.	

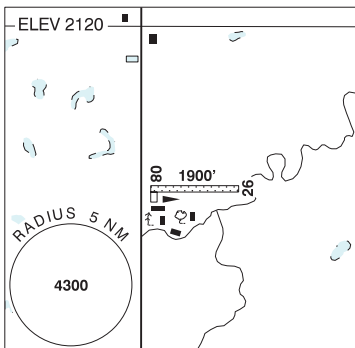
SASKATCHEWAN

AERODROME / FACILITY DIRECTORY

BRIERCREST SOUTH SK

CBS7

REF	N50 03 59 W105 18 02 8SSW 10°E (2012) UTC-6 Elev 2120' A5006
OPR	Randy Thiele 306-799-4451 Reg
PF	B-1
FLT PLN	
FIC	Edmonton 866-WXBRIEF (Toll free within Canada) or 866-541-4102 (Toll free within Canada & USA)
RWY DATA	Rwy 08(080°)/26(260°) 1900x45 GRASS
RCR	Opr No win maint
COMM	
ATF	tfc 123.2 5NM 5200 ASL



Canadian Aviation Regulations

Division III — General Operating and Flight Rules

For full listing please visit : <https://laws-lois.justice.gc.ca/eng/regulations/SOR-96-433/FullText.html#s-901.27>

Visual Line-of-sight

- **901.11 (1)** Subject to subsection (2), no pilot shall operate a remotely piloted aircraft system unless the pilot or a visual observer has the aircraft in visual line-of-sight at all times during flight.
- **(2)** A pilot may operate a remotely piloted aircraft system without the pilot or a visual observer having the aircraft in visual line-of-sight if the operation is conducted in accordance with a special flight operations certificate — RPAS issued under section 903.03.

Procedures

- **901.23 (1)** No pilot shall operate a remotely piloted aircraft system unless the following procedures are established:
 - **(a)** normal operating procedures, including pre-flight, take-off, launch, approach, landing and recovery procedures; and
 - **(b)** emergency procedures, including with respect to
 - **(i)** a control station failure,
 - **(ii)** an equipment failure,
 - **(iii)** a failure of the remotely piloted aircraft,
 - **(iv)** a loss of the command and control link,
 - **(v)** a fly-away, and
 - **(vi)** flight termination.
- **(2)** If the manufacturer of the remotely piloted aircraft system provides instructions with respect to the topics referred to in paragraphs (1)(a) and (b), the procedures established under subsection (1) shall reflect those instructions.
- **(3)** No pilot shall conduct the take-off or launch of a remotely piloted aircraft unless the procedures referred to in subsection (1) are reviewed before the flight by, and are immediately available to, each crew member.
- **(4)** No pilot shall operate a remotely piloted aircraft system unless the operation is conducted in accordance with the procedures referred to in subsection (1).

Site Survey

901.27 No pilot shall operate a remotely piloted aircraft system unless, before commencing operations, they determine that the site for take-off, launch, landing or recovery is suitable for the proposed operation by conducting a site survey that takes into account the following factors:

- **(a)** the boundaries of the area of operation;
- **(b)** the type of airspace and the applicable regulatory requirements;
- **(c)** the altitudes and routes to be used on the approach to and departure from the area of operation;
- **(d)** the proximity of manned aircraft operations;
- **(e)** the proximity of aerodromes, airports and heliports;
- **(f)** the location and height of obstacles, including wires, masts, buildings, cell phone towers and wind turbines;
- **(g)** the predominant weather and environmental conditions for the area of operation; and
- **(h)** the horizontal distances from persons not involved in the operation.

Operations at or in the Vicinity of an Aerodrome, Airport or Heliport

- **901.47 (1)** No pilot shall operate a remotely piloted aircraft at or near an aerodrome that is listed in the *Canada Flight Supplement* or the *Water Aerodrome Supplement* in a manner that could interfere with an aircraft operating in the established traffic pattern.
- **(2)** Subject to section 901.73, no pilot shall operate a remotely piloted aircraft at a distance of less than
 - **(a)** three nautical miles from the centre of an airport; and
 - **(b)** one nautical mile from the centre of a heliport.
- **(3)** No pilot shall operate a remotely piloted aircraft at a distance of less than three nautical miles from the centre of an aerodrome operated under the authority of the Minister of National Defence unless the operation is conducted in accordance with a special flight operations certificate — RPAS issued under section 903.03.

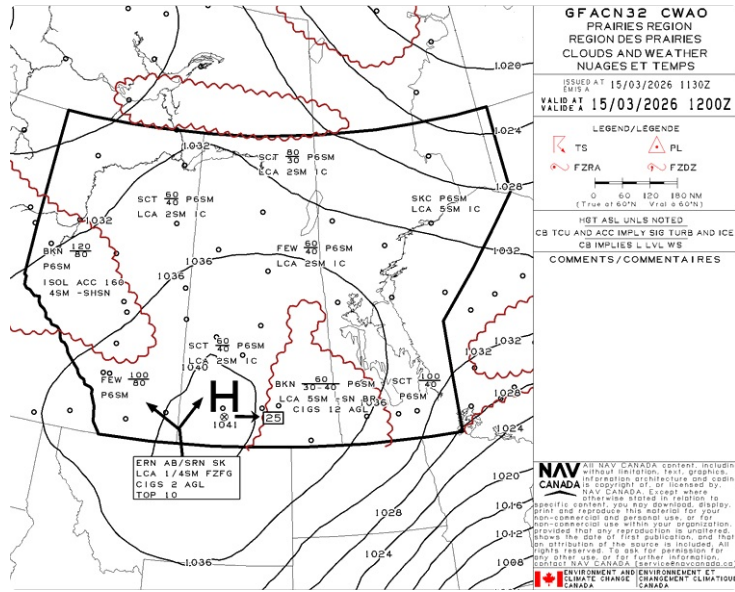
Records

- **901.48 (1)** Every owner of a remotely piloted aircraft system shall keep the following records:
 - **(a)** a record containing the names of the pilots and other crew members who are involved in each flight and, in respect of the system, the time of each flight or series of flights; and
 - **(b)** a record containing the particulars of any mandatory action and any other maintenance action, modification or repair performed on the system, including
 - **(i)** the names of the persons who performed them,
 - **(ii)** the dates they were undertaken,
 - **(iii)** in the case of a modification, the manufacturer, model and a description of the part or equipment installed to modify the system, and
 - **(iv)** if applicable, any instructions provided to complete the work.
- **(2)** Every owner of a remotely piloted aircraft system shall ensure that the records referred to in subsection (1) are made available to the Minister on request and are retained for a period of
 - **(a)** in the case of the records referred to in paragraph (1)(a), 12 months after the day on which they are created; and
 - **(b)** in the case of the records referred to in paragraph (1)(b), 24 months after the day on which they are created.
- **(3)** Every owner of a remotely piloted aircraft system who transfers ownership of the system to another person shall, at the time of transfer, also deliver to that person all of the records referred to in paragraph (1)(b).

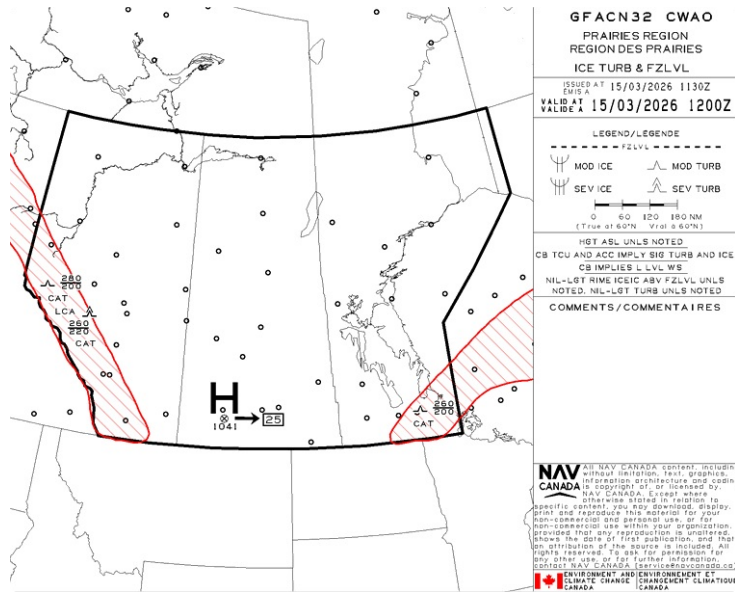
Graphical Area Forecast

ISSUE TIME + 00 HR

CLOUDS AND WEATHER



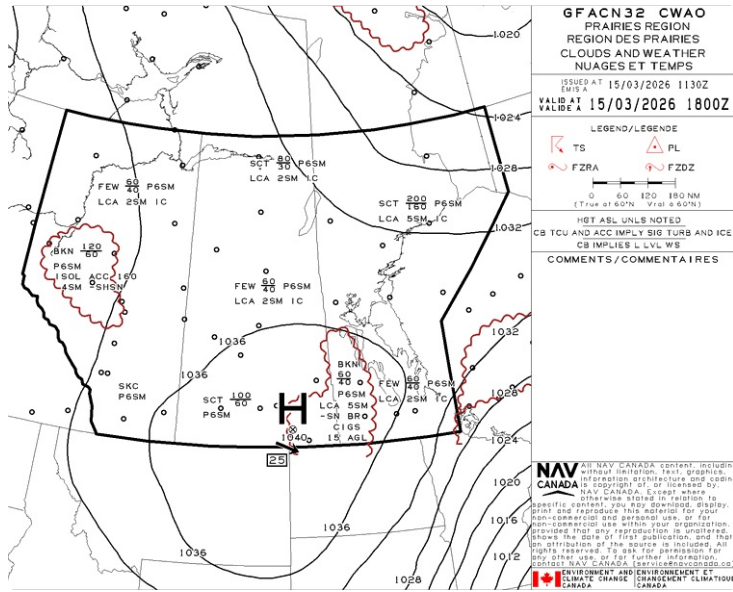
TURBULENCE, ICING AND FREEZING LEVEL



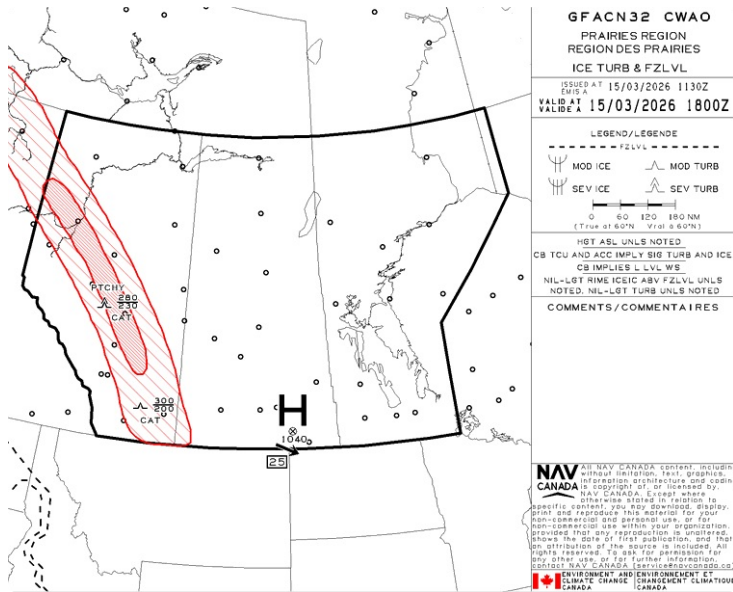
Graphical Area Forecast

ISSUE TIME + 06 HR

CLOUDS AND WEATHER



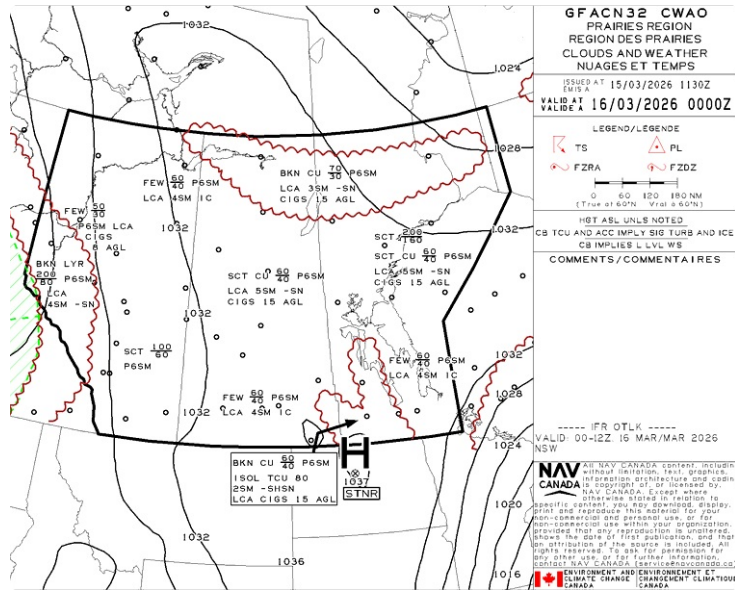
TURBULENCE, ICING AND FREEZING LEVEL



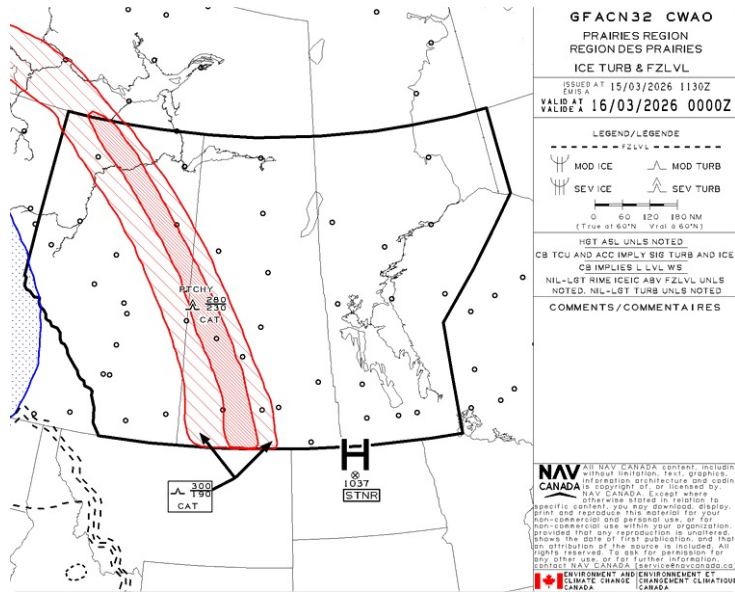
Graphical Area Forecast

ISSUE TIME + 12 HR

CLOUDS AND WEATHER



TURBULENCE, ICING AND FREEZING LEVEL



Aerodrome Information

METAR, TAF & NOTAM

MOOSE JAW MUNI - CJS4 - Reg

WEATHER DATA

NOTAM

(G0398/26 NOTAMR G0223/26

Q) CZXX/QXXX/IV/NB0/E/000/999/5245N09040W999

A) CZWG CZYZ B) 2602181426 C) 2605192000EST

E) CANADIAN AIR OPERATORS AND OWNERS OF AIRCRAFT REGISTERED IN CANADA ARE ADVISED TO TAKE ALL POTENTIAL RISK INFORMATION INTO ACCOUNT IN THEIR RISK ASSESSMENT AND ROUTING DECISIONS WHEN OPERATING IN FIR MAIQUETIA (SVZM) DUE TO POTENTIAL RISK ASSOCIATED WITH POTENTIAL FOR MILITARY ACTIVITY WITHIN VENEZUELA.)

(M0137/26 NOTAMR M2761/25

Q) CZWG/QWULW/IV/BO/W/000/180/4905N10230W297

A) CZWG B) 2602022016 C) 2604302000EST

E) MUTIPLE REMOTELY PILOTED ACFT (RPA), RCMP RPA BORDER PATROLS, WITHIN AREA 1NM NORTH SIDE OF A LINE 4900N 11000W - 4900N 09500W (CANADA/USA BORDER IN THE PROVINCE OF SASKATCHEWAN (SK) AND MANITOBA (MB)).

ACFT WEIGHT: 150KG OR LESS. ALL ACFT REQUESTED TO REMAIN CLR.

NON ADS-B ACFT ARE REQUESTED TO CTC PRIOR

BEFORE 24HR CTC NWRRPAS-NWRSAT(AT)RCMP-GRC.GC.CA,

WITHIN 24HR CTC AB 1-833-476-4238,

SK 1-866-475-4238, MB 1-888-626-4238.

F) SFC G) 500FT AGL)

(J0541/26 NOTAMR J0475/26

Q) CZWG/QFALT/IV/NB0/A/000/999/5026N10523W005

A) CXXX B) 2601231915 C) 2604242030

D) MON-FRI 1915-2030 EXC HOL

E) CJS4 MOOSE JAW MUNI

PURSUANT TO SECTION 5.1 OF THE AERONAUTICS ACT, THE AIRSPACE WITHIN RADIUS 7NM CENTRE 502601N 1052310W (AD) EXC THE PORTION WITHIN THE 15 WING MOOSE JAW CYMJ CTL ZONE, IS RESTRICTED FOR AIRSHOW PRACTICE AND AIRSHOW. EXC FOR MEDEVAC, SAR, AND POLICE. NO PERSON SHALL OPR AN ACFT, INCLUDING REMOTELY PILOTED ACFT (RPA-DRONE), WITHIN THE AREA DESCRIBED UNLESS THE FLT HAS BEEN AUTH BY SNOWBIRDS SAFETY PILOT 418 376 8366 OR 15 WING OPS OFFICER 250 702 7107.

SFC TO 8000FT AMSL)

(G0176/26 NOTAMR G0164/26

Q) CZWG/QRCA/IV/BO/W/000/080/5026N10523W007

A) CZWG B) 2601231915 C) 2604242030

D) MON-FRI 1915-2030 EXC HOL

E) PURSUANT TO SECTION 5.1 OF THE AERONAUTICS ACT, THE AIRSPACE WITHIN RADIUS 7NM CENTRE 502601N 1052310W (AT MOOSE JAW MUNI AD (CJS4)) EXC THE PORTION WITHIN THE 15 WING MOOSE JAW CYMJ CTL ZONE, IS RESTRICTED FOR AIRSHOW PRACTICE AND AIRSHOW. EXC FOR MEDEVAC, SAR, AND POLICE. NO PERSON SHALL OPR AN ACFT, INCLUDING REMOTELY PILOTED ACFT (RPA-DRONE), WITHIN THE AREA DESCRIBED UNLESS THE FLT HAS BEEN AUTH BY SNOWBIRDS SAFETY PILOT 418 376 8366 OR 15 WING OPS OFFICER 250 702 7107.

F) SFC G) 8000FT AMSL)

Aerodrome Information

METAR, TAF & NOTAM

MOOSE JAW (DR. F. H. WIGMORE REGIONAL HOSP) - CWH6 - Reg

WEATHER DATA

NOTAM

(G0398/26 NOTAMR G0223/26

Q) CZXX/QXXXX/IV/NB0/E/000/999/5245N09040W999

A) CZWG CZYZ B) 2602181426 C) 2605192000EST

E) CANADIAN AIR OPERATORS AND OWNERS OF AIRCRAFT REGISTERED IN CANADA ARE ADVISED TO TAKE ALL POTENTIAL RISK INFORMATION INTO ACCOUNT IN THEIR RISK ASSESSMENT AND ROUTING DECISIONS WHEN OPERATING IN FIR MAIQUETIA (SVZM) DUE TO POTENTIAL RISK ASSOCIATED WITH POTENTIAL FOR MILITARY ACTIVITY WITHIN VENEZUELA.)

(M0137/26 NOTAMR M2761/25

Q) CZWG/QWULW/IV/BO/W/000/180/4905N10230W297

A) CZWG B) 2602022016 C) 2604302000EST

E) MUTIPLE REMOTELY PILOTED ACFT (RPA), RCMP RPA BORDER PATROLS, WITHIN AREA 1NM NORTH SIDE OF A LINE 4900N 11000W - 4900N 09500W (CANADA/USA BORDER IN THE PROVINCE OF SASKATCHEWAN (SK) AND MANITOBA (MB)).

ACFT WEIGHT: 150KG OR LESS. ALL ACFT REQUESTED TO REMAIN CLR.

NON ADS-B ACFT ARE REQUESTED TO CTC PRIOR

BEFORE 24HR CTC NWRRPAS-NWRSAT(AT)RCMP-GRC.GC.CA,

WITHIN 24HR CTC AB 1-833-476-4238,

SK 1-866-475-4238, MB 1-888-626-4238.

F) SFC G) 500FT AGL)

(G0176/26 NOTAMR G0164/26

Q) CZWG/QRTCA/IV/BO/W/000/080/5026N10523W007

A) CZWG B) 2601231915 C) 2604242030

D) MON-FRI 1915-2030 EXC HOL

E) PURSUANT TO SECTION 5.1 OF THE AERONAUTICS ACT, THE AIRSPACE WITHIN RADIUS 7NM CENTRE 502601N 1052310W (AT MOOSE JAW MUNI AD (CJS4)) EXC THE PORTION WITHIN THE 15 WING MOOSE JAW CYMJ CTL ZONE, IS RESTRICTED FOR AIRSHOW PRACTICE AND AIRSHOW. EXC FOR MEDEVAC, SAR, AND POLICE. NO PERSON SHALL OPR AN ACFT, INCLUDING REMOTELY PILOTED ACFT (RPA-DRONE), WITHIN THE AREA DESCRIBED UNLESS THE FLT HAS BEEN AUTH BY SNOWBIRDS SAFETY PILOT 418 376 8366 OR 15 WING OPS OFFICER 250 702 7107.

F) SFC G) 8000FT AMSL)

Aerodrome Information

METAR, TAF & NOTAM

AIR VICE MARSHAL C.M. MCEWEN - CYMJ - DND

WEATHER DATA

TAF

TAF CYMJ 151140Z NIL
RMK NO OBS. NXT FCST BY 151800Z=

NOTAM

(G0398/26 NOTAMR G0223/26

Q) CZXX/QXXXX/IV/NB0/E/000/999/5245N09040W999

A) CZWG CZY B) 2602181426 C) 2605192000EST

E) CANADIAN AIR OPERATORS AND OWNERS OF AIRCRAFT REGISTERED IN CANADA ARE ADVISED TO TAKE ALL POTENTIAL RISK INFORMATION INTO ACCOUNT IN THEIR RISK ASSESSMENT AND ROUTING DECISIONS WHEN OPERATING IN FIR MAIQUETIA (SVZM) DUE TO POTENTIAL RISK ASSOCIATED WITH POTENTIAL FOR MILITARY ACTIVITY WITHIN VENEZUELA.)

(M0137/26 NOTAMR M2761/25

Q) CZWG/QWULW/IV/B0/W/000/180/4905N10230W297

A) CZWG B) 2602022016 C) 2604302000EST

E) MULTIPLE REMOTELY PILOTED ACFT (RPA), RCMP RPA BORDER PATROLS, WITHIN AREA 1NM NORTH SIDE OF A LINE 4900N 11000W - 4900N 09500W (CANADA/USA BORDER IN THE PROVINCE OF SASKATCHEWAN (SK) AND MANITOBA (MB)).

ACFT WEIGHT: 150KG OR LESS. ALL ACFT REQUESTED TO REMAIN CLR.

NON ADS-B ACFT ARE REQUESTED TO CTC PRIOR

BEFORE 24HR CTC NWRPAS-NWRSAT(AT)RCMP-GRC.GC.CA,

WITHIN 24HR CTC AB 1-833-476-4238,

SK 1-866-475-4238, MB 1-888-626-4238.

F) SFC G) 500FT AGL)

(G0230/26 NOTAMR G4225/25

Q) CZWG/QCPAS/I/B0/A/000/999/5020N10534W005

A) CYMJ B) 2601302104 C) 2604302359

E) PAR U/S)

(D0113/26 NOTAMN

Q) CZWG/QPIAU/I/NB0/A/000/999/5020N10534W005

A) CYMJ B) 2601121445 C) 2604080030EST

E) RNAV (GNSS) RWY 11R (DND): ALL MINIMA: NOT AUTH

RNAV (GNSS) RWY 29L (DND): ALL MINIMA: NOT AUTH

TACAN Z OR VOR/DME Z RWY 11R (DND): ALL MINIMA: NOT AUTH

TACAN OR VOR/DME Z RWY 29L (DND): ALL MINIMA: NOT AUTH

HI TACAN Y OR HI VOR/DME Y RWY 11R (DND): ALL MINIMA: NOT AUTH

HI TACAN OR HI VOR/DME Y RWY 29L (DND): ALL MINIMA: NOT AUTH)

(D0072/26 NOTAMN

Q) CZWG/QMRLI/IV/NB0/A/000/999/5020N10534W005

A) CYMJ B) 2601082139 C) 2604090030EST

E) RWY 11L/29R USABLE WIDTH REDUCED TO 120FT.)

(D0067/26 NOTAMN

Q) CZWG/QLAXX/IV/NB0/A/000/999/5020N10534W005

A) CYMJ B) 2601081825 C) 2604080030

E) ALS 11L AND 29R TO READ: AW)

(D0065/26 NOTAMN

Q) CZWG/QLPAS/IV/B0/A/000/999/5020N10534W005

A) CYMJ B) 2601091430 C) 2604080030EST

E) PAPI 11L AND 29R U/S)

(D0058/26 NOTAMN

Q) CZWG/QMRLC/IV/NB0/A/000/999/5020N10534W005

A) CYMJ B) 2601091430 C) 2604080030

E) RWY 03/21 CLSD.)

Aerodrome Information

METAR, TAF & NOTAM

DISLEY - CDS2 - Reg

WEATHER DATA

NOTAM

(G0398/26 NOTAMR G0223/26

Q) CZXX/QXXXX/IV/NB0/E/000/999/5245N09040W999

A) CZWG CZYZ B) 2602181426 C) 2605192000EST

E) CANADIAN AIR OPERATORS AND OWNERS OF AIRCRAFT REGISTERED IN CANADA ARE ADVISED TO TAKE ALL POTENTIAL RISK INFORMATION INTO ACCOUNT IN THEIR RISK ASSESSMENT AND ROUTING DECISIONS WHEN OPERATING IN FIR MAIQUETIA (SVZM) DUE TO POTENTIAL RISK ASSOCIATED WITH POTENTIAL FOR MILITARY ACTIVITY WITHIN VENEZUELA.)

(M0137/26 NOTAMR M2761/25

Q) CZWG/QWULW/IV/BO/W/000/180/4905N10230W297

A) CZWG B) 2602022016 C) 2604302000EST

E) MUTIPLE REMOTELY PILOTED ACFT (RPA), RCMP RPA BORDER PATROLS, WITHIN AREA 1NM NORTH SIDE OF A LINE 4900N 11000W - 4900N 09500W (CANADA/USA BORDER IN THE PROVINCE OF SASKATCHEWAN (SK) AND MANITOBA (MB)).

ACFT WEIGHT: 150KG OR LESS. ALL ACFT REQUESTED TO REMAIN CLR.

NON ADS-B ACFT ARE REQUESTED TO CTC PRIOR

BEFORE 24HR CTC NWRRPAS-NWRSAT(AT)RCMP-GRC.GC.CA,

WITHIN 24HR CTC AB 1-833-476-4238,

SK 1-866-475-4238, MB 1-888-626-4238.

F) SFC G) 500FT AGL)

Aerodrome Information

METAR, TAF & NOTAM

BRIERCREST SOUTH - CBS7 - Reg

WEATHER DATA

NOTAM

(G0398/26 NOTAMR G0223/26

Q) CZXX/QXXXX/IV/NB0/E/000/999/5245N09040W999

A) CZWG CZYZ B) 2602181426 C) 2605192000EST

E) CANADIAN AIR OPERATORS AND OWNERS OF AIRCRAFT REGISTERED IN CANADA ARE ADVISED TO TAKE ALL POTENTIAL RISK INFORMATION INTO ACCOUNT IN THEIR RISK ASSESSMENT AND ROUTING DECISIONS WHEN OPERATING IN FIR MAIQUETIA (SVZM) DUE TO POTENTIAL RISK ASSOCIATED WITH POTENTIAL FOR MILITARY ACTIVITY WITHIN VENEZUELA.)

(M0137/26 NOTAMR M2761/25

Q) CZWG/QWULW/IV/BO/W/000/180/4905N10230W297

A) CZWG B) 2602022016 C) 2604302000EST

E) MUTIPLE REMOTELY PILOTED ACFT (RPA), RCMP RPA BORDER PATROLS, WITHIN AREA 1NM NORTH SIDE OF A LINE 4900N 11000W - 4900N 09500W (CANADA/USA BORDER IN THE PROVINCE OF SASKATCHEWAN (SK) AND MANITOBA (MB)).

ACFT WEIGHT: 150KG OR LESS. ALL ACFT REQUESTED TO REMAIN CLR.

NON ADS-B ACFT ARE REQUESTED TO CTC PRIOR

BEFORE 24HR CTC NWRRPAS-NWRSAT(AT)RCMP-GRC.GC.CA,

WITHIN 24HR CTC AB 1-833-476-4238,

SK 1-866-475-4238, MB 1-888-626-4238.

F) SFC G) 500FT AGL)