
FLIGHT PLAN & SITE SURVEY

E 9005-5884 Zone E Middle Ontario- VIRTUAL MEETING

July 10, 2026



IMPORTANT NOTICE

Please ensure you have received all required authorizations prior to flight. This Site Survey was created using RPAS Wilco. The user accepts all responsibility for the accuracy of the information.

Terms & Conditions: rpaswilco.com/#tnc

Mission Information

E 9005-5884 ZONE E MIDDLE ONTARIO- VIRTUAL MEETING

FLIGHT DETAILS

Reference No:	MAAC-9005-5884
Project Name:	Zone E Middle Ontario
Pilot Name:	MAAC
Pilot Certificate:	
Mission Type:	VLOS
Flight Start:	July 10, 2026 07:13 AM
Flight End:	July 10, 2026 08:13 AM

LOCATION DETAILS

Flight Address:	VIRTUAL MEETING
Latitude:	0° 0' 0.00" N (0.0)
Longitude:	0° 0' 0.00" E (0.0)
Field Elevation:	N/A
Altitude / Radius:	400 ft / 926.0 m (0.5 nm)
Classification:	UNCONTROLLED
FIR / Contact:	CZQM / 506-867-7173

REPORT CONTENTS

Site Survey • Obstacles (if available) • Nearby Aerodromes • Canadian Aviation Regulations • GFA • Aerodrome Supplements • METAR & TAF • NOTAMs • CFS

Flight Map & MODEL Details





MISSION LOCATION SURVEY

FLIGHT AREA MAP



IMAGE NOT AVAILABLE

MISSION LOCATION DETAILS

ROLE	LATITUDE	LONGITUDE
 MODEL	0° 0' 0.00" N 0.0	0° 0' 0.00" E 0.0
 Pilot		
 Payload Op.		
 Observer		

Airspace Classification

MISSION LOCATION SURVEY

AIRSPACE MAP



OVERLYING AIRSPACES

No Airspace Info Available

NEAREST AERODROMES & DISTANCE FROM OPERATION

EAST GORE ECO AIRPARK (CCY4 - AERODROME - Reg)	Lat: 0.752	Long: -1.062	144.66KM	78.11NM	NW
Operator: MIKE C BLOISE: PHONE: 902-305-5505, POST: UNKNOWN FIR Contact: 506-867-7173					
ST. JOHN'S INTL (CYYT - AERODROME - Cert)	Lat: 47.619	Long: -52.752	7330.166KM	3957.974NM	NW
Operator: ST. JOHN'S INTERNATIONAL AIRPORT AUTHORITY INCORPORATED: PHONE: 709-757-4444, POST: UNKNOWN FIR Contact: 709-651-5324					
ST. JOHN'S (HEALTH SCIENCES CENTRE) (CCK2 - HELIPORT - Cert)	Lat: 47.573	Long: -52.745	7327.201KM	3956.373NM	NW
Operator: EASTERN HEALTH CARE: PHONE: 709-777-6294, POST: UNKNOWN FIR Contact: 709-651-5324					

NOVA SCOTIA

AERODROME / FACILITY DIRECTORY

EAST GORE ECO AIRPARK NS

CCY4

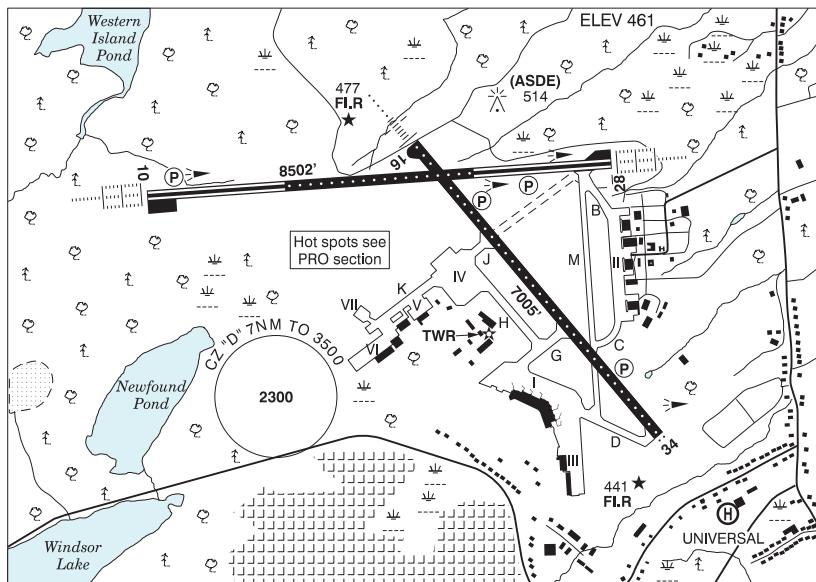
REF	N45 07 W63 42 2.5N 18°W (2014) UTC-4(3) Elev 615' A5003	
OPR	Mike C Bloise 902-305-5505 Reg PN	
PF	B-1,3,5,6 C-2,4	
FLT PLN	<p>FIC London 866-WXBRIEF (Toll free within Canada) or 866-541-4104 (Toll free within Canada & USA)</p> <p>ACC (IFR only) Moncton 506-867-7177 or 866-480-8200.</p>	
RWY DATA	Rwy 17/35 1750x60 GRASS Rwy soft when wet.	
RCR	Opr No win maint	
COMM	ATF tfc 123.2 5NM 3700 ASL	
CAUTION	Twr 500' NE Thld 17 64 AGL not lgtd not painted and Twr 1NM SW 384 AGL 1135 ASL painted and lgtd.	

NEWFOUNDLAND AND LABRADOR

AERODROME / FACILITY DIRECTORY

ST. JOHN'S INTL NL

CYYT



REF	N47 37 07 W52 45 09 3NW 17°W (2023) UTC-31/2(21/2) Elev 461' A5012 L08 H16 CAP OC
OPR	St. John's International Airport Authority Inc 709-757-4444 H24 Cert
PF	A-1,2,3,6 C-4,5
CUST	AOE/165 (450 with staged off-loading) 1130-0330Z± General aviation 888-226-7277
FLT PLN	<p>FIG London 866-WXBRIEF (Toll free within Canada) or 866-541-4104 (Toll free within Canada & USA)</p> <p>ACC (IFR only) Gander 709-651-5225 or 888-751-5225.</p> <p>WX METAR H24 TAF H24, issue times: 00, 06, 12, 18Z</p>
SERVICES	<p>FUEL 100LL, JA-1 (FSII avbl) O/R</p> <p>OIL All</p> <p>S 1,2,4</p> <p>ARFF DESIGNATED CAT 7</p> <p>SUP FL LPOX, D & A-ice</p> <p>JASU CAN-A Elect Start 10/15</p> <p>MIL ADV Transient svcs avbl to RCAF and NATO acft thru Air Reserve Torbay Ops 709-570-4791 or 709-685-0243. Trans svcs avbl 1030-0230Z±, aft hrs with 4 hr PN. Tow bars avbl for C130, P3, EH101, S61, C144</p> <p>PVT ADV Woodward Aviation 123.5 709-579-3776 Fax 709-579-8513; Shell Aerocentre 123.0 709-576-4615 Fax 709-576-0768; Irving Aviation Svcs 122.9 709-758-3200 Fax 709-758-3201</p> <p>MIL CON Woodward's Oil Ltd 709-579-3776</p>

NEWFOUNDLAND AND LABRADOR

AERODROME / FACILITY DIRECTORY

ST. JOHN'S INTL NL (Cont'd)

CYT

RWY DATA	Rwy 10(103°)/28(283°) 8502x200 ASPH Rwy 16(156°)/34(336°) 7005x200 ASPH RESA: 16/34 492'; 10/28 492'
RWY CERT	Rwy 10 RVR 600/Rwy 28 RVR 600 AGN V Rwy 16 RVR 1200(1/4sm)/Rwy 34 RVR 1200(1/4sm) AGN V
TWY	Twy K uncontrolled bcst intentions on 121.9
APRON	All Aprons uncontrolled. Taxiing acft to remain on taxilanes. Acft shall not taxi btwn tml and pushed back acft. Apron I: Acft with a wingspan greater than 52m (170.6') but less than 65m (213.3') to access/exit Apron I via Twy G only, rstd to Gate 1. Dedicated cargo ops proh. Widebody acft using Bridge 1 must dock at L1 door. Apron II: rstd to acft with wingspan 52m (170.6') or less. All turbine acft engine runs above idle power prohibited on Apron II. Apron II Helicopter FATO operations prohibited. Apron VII: Rstd to B767 acft and smaller.
RCR	Opr CRFI Win field cond reports 709-757-4444. PCN
LIGHTING	10-AL(TE HI CL TDZL)P3, 28-AL(TE HI CL TDZL)P3, 16-AN(TE HI CL)P3, 34-AS(TE HI CL)P3
COMM	
RCO	London rdo 123.275 (FISE) 126.7 (bcst)
ATIS	128.0
GND	121.9 275.8
TWR	120.6 236.6 (E) (emerg only 709-724-1055)
PAL	Gander Ctr 133.15 135.35 227.3
MIL	Air Reserve Torbay Ops 131.02
INTL AIR	Gander rdo 122.375 135.35
NAV	
VOR/DME	TORBAY YYT 113.5 Ch 82 N47 29 07 W52 51 08 (839')
DME	ISO 110.3 Ch 40 N47 37 26 W52 44 27 (474')
ILS	IYT 110.7 (Rwy 16) RVR ISO 110.3 (Rwy 28) RVR IMP 109.1 (Rwy 10) RVR

ST. JOHN'S INTL NL (Cont'd)

CYYT

PRO

Pilots should refer to Canadian Airport Charts (CAC) to obtain details on established hot spots, prior to operating on maneuvering areas. CAC are available for free on the NAV CANADA website.

DE-ICING PROCEDURES

1. Ctc ICEMAN thirty minutes prior to push back on 129.2.
2. Ctc ST JOHN'S GND after pushback for taxi to CDF.
3. Hold short of CDF on H.
4. ST JOHN'S GND will advs the flt crew to ctc ICEMAN on 129.2 when the acft has taxied to the proper entry point.
5. ICEMAN will then delegate bay assignment & entry instructions. Expect freq change to de-icing bay frequencies.
6. De-icing bay frequencies;
 - Bay 1 – Contact IDS on 122.950 MHz
 - Bay 2 – Contact IDS on 130.125 MHz
 - Bay 3/4 – Contact IDS on 128.950 MHz
7. Flt crews are advised to exercise discretion at all times while on the CDF. Directional signage and taxi lines on the CDF must be followed by flt crews at all times.
8. After de-icing is complete, return to 129.2 MHz for pad exit instructions. Flt crews must advs ICEMAN that all equipment and de-icing personnel are away from the acft and have returned to their designated safety zones.
9. ICEMAN will instruct the acft to hold its position on the CDF and ctc ST JOHN'S GND on 121.9 MHz.
10. Acft to hold its position until ST JOHN'S GND issues further taxi instructions from the CDF.

NOTES:

1. Acft intending on returning to any apron after de-icing must drip dry for 25min on CDF.
2. Single engine taxi not permitted from CDF.
3. Engine run-ups are not permitted on CDF.
4. Contact 709-753-9742 for de-icing if Icehouse unavailable.

DE-ICING OPERATIONS**DE-ICING BAYS RESTRICTIONS**

1. Bay 1 - Max wingspan for de-icing ops 35.8m (117')
2. Bay 2 - Max wingspan for de-icing ops 35.8m (117'). Note: Bay 3 is closed/unusable when Bay 2 is occupied.
3. Bay 3 - Max wingspan for de-icing ops 79.75m (262'). Note: Bays 2 and 4 are closed/unusable when Bay 3 is occupied.
4. Bay 4 - Max wingspan for de-icing ops is 35.8m (117'). Note: Bay 3 is closed/unusable when Bay 4 is occupied.

NOTE: The above noted max wingspans are intended to protect adj de-icing bays, safety zones and the apron twy. Exceedances of these values are permitted but must be evaluated and approved by the Aprt Authority to ensure special op procedures are communicated and implemented.

CAUTION

Open pit blasting ops 11NM SW to 1000 ASL 200 AGL, 1NM radius of N47 29 08 W52 57 11.

Weather condition: No landing auth without electronic GP or vertical guidance capability when moderate to severe turbulence/wind shear/downdrafts being reported.

Daily radiosonde balloon launches with an ascent rate of 1000 ft/min btwn hrs of 1115-1345Z and 2315-0145Z.

Extv bird activity May-Nov. Poles & houses 646 ASL (42 AGL) aprx 2 NM NW of A/D.

NEWFOUNDLAND AND LABRADOR

AERODROME / FACILITY DIRECTORY

ST. JOHN'S (HEALTH SCIENCES CENTRE) NL (Heli)

CCK2

REF	N47 34 21 W52 44 44 1.5W 17°W (2022) UTC-3 1/2 (2 1/2) Elev 216' A5012	
OPR	Eastern Health Care 709-777-6294 Cert PPR	
PF	A-1 C- 5	
FLT PLN		
FIC	London 866-WXBRIEF (Toll free within Canada) or 866-541-4104 (Toll free within Canada & USA)	
HELI DATA	FATO/TLOF 123' x 123' ASPH Safety Area 164' x 164' Max heli overall length 82'	
RCR	Opr	
LIGHTING	DR(064°) RW(LO) yellow RF(FL)	
COMM		
TWR	St. John's 120.6 (E)	
PRO	Arr/dep 064° & 186° fr heli (H1).	
CAUTION	Lgtd P-line aprx 262 ASL aprx 1540' E of heli safety area. P-Line oriented NW-SE Downslope, perpendicular to and within arr/dep path 065°.	